

Project: Garfield County, CO  
 Site: NPM G35 496 Pad  
 Well: BJU G35 FED 25C-35 496  
 Wellbore: Wellbore #1  
 Design: Design #2  
 Latitude: 39.660303  
 Longitude: -108.133909  
 Ground Level: 8164.0  
 RKB @ 8194.0usft (H&P#329)

FORMATION TOP DETAILS		
TVDPath	MDPath	Formation
2515.0	2670.5	Wasatch
5515.0	5928.8	Wasatch G
5832.0	6273.1	Fort Union
7880.0	8453.6	Ohio Creek
7880.0	8453.6	TOG
8114.0	8687.7	Williams Fork
10825.0	11399.7	Cameo
11411.0	11985.9	Rollins

#### REFERENCE INFORMATION

Co-ordinate (N/E) Reference: Well BJU G35 FED 25C-35 496 - Slot 25C-35, True North  
 Vertical (TVD) Reference: RKB @ 8194.0usft (H&P#329)  
 Section (VS) Reference: Slot - 25C-35(0.0N, 0.0E)  
 Measured Depth Reference: RKB @ 8194.0usft (H&P#329)  
 Calculation Method: Minimum Curvature

#### WELL DETAILS: BJU G35 FED 25C-35 496

+N/-S	+E/-W	Northing	Easting	Latitude	Longitude
0.0	0.0	14415236.20	2447115.30	39.660303	-108.133909

#### PROJECT DETAILS: Garfield County, CO

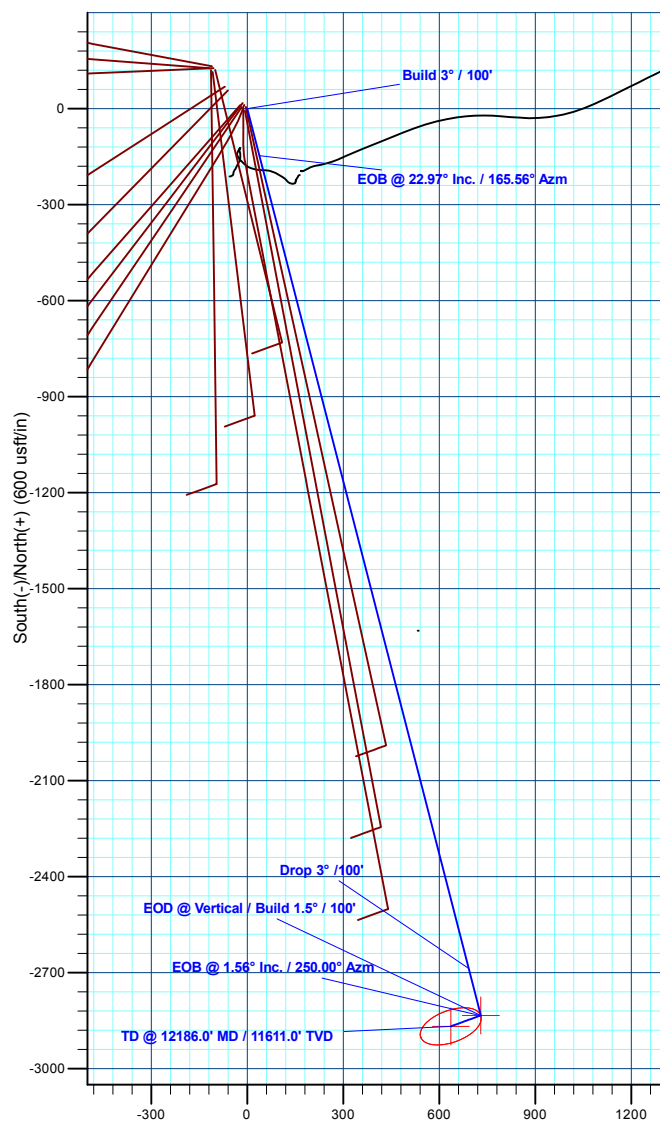
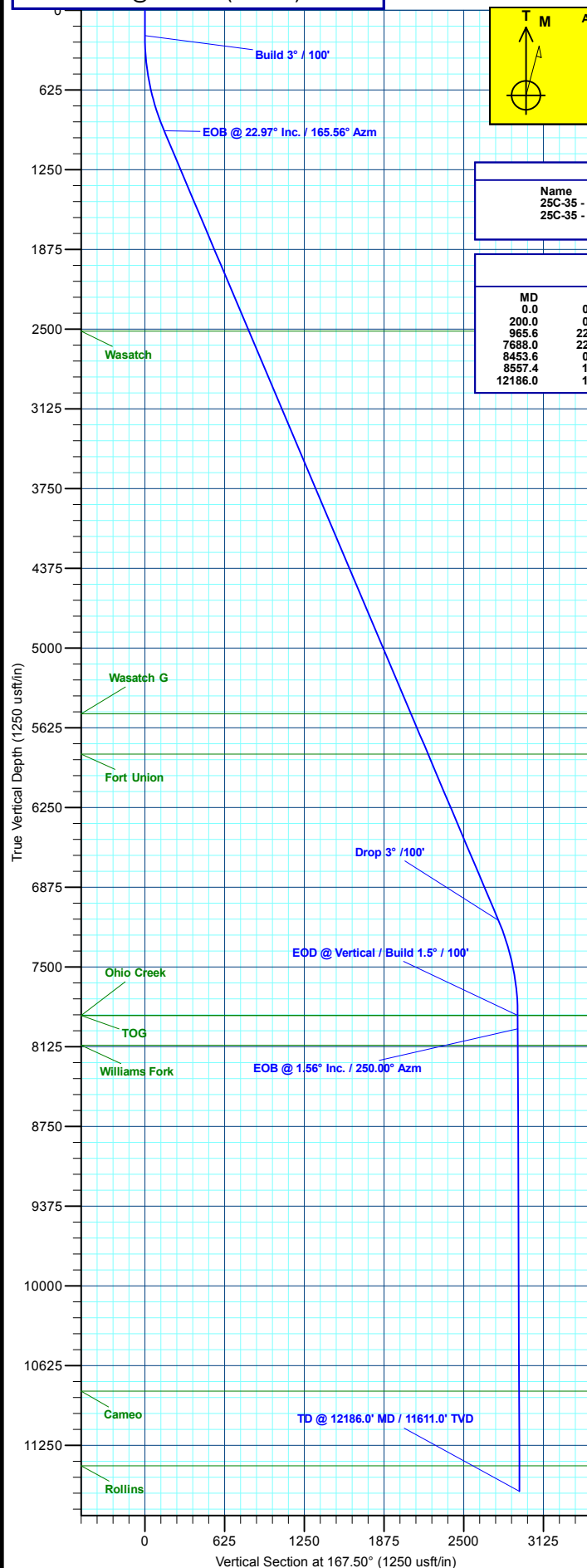
Geodetic System: Universal Transverse Mercator (US Survey Feet)  
 Datum: NAD 1927 - Western US  
 Ellipsoid: Clarke 1866  
 Zone: Zone 12N (114 W to 108 W)  
 System Datum: Mean Sea Level

#### DESIGN TARGET DETAILS

Name	TVD	+N/-S	+E/-W	Northing	Easting	Latitude	Longitude
25C-35 - OHCR	7880.0	-2833.6	729.8	14412427.39	2447935.23	39.652527	-108.131318
25C-35 - PBHL	11611.0	-2867.8	635.8	14412390.20	2447842.40	39.652433	-108.131652

#### SECTION DETAILS

MD	Inc	Azi	TVD	+N/-S	+E/-W	Dleg	TFace	VSec	Annotation
0.0	0.00	0.00	0.0	0.0	0.0	0.00	0.00	0.0	
200.0	0.00	0.00	200.0	0.0	0.0	0.00	0.00	0.0	Build 3° / 100'
965.6	22.97	165.56	945.3	-146.6	37.8	3.00	165.56	151.3	EOB @ 22.97° Inc. / 165.56° Azm
7688.0	22.97	165.56	7134.7	-2686.9	692.0	0.00	0.00	0.0	Drop 3° / 100'
8453.6	0.00	0.00	7880.0	-2833.6	729.8	3.00	180.00	2924.0	EOD @ Vertical / Build 1.5° / 100'
8557.4	1.56	250.00	7983.8	-2834.0	728.5	1.50	250.00	2924.5	EOB @ 1.56° Inc. / 250.00° Azm
12186.0	1.56	250.00	11611.0	-2867.8	635.8	0.00	0.00	2937.4	TD @ 12186.0' MD / 11611.0' TVD



Plan: Design #2 (BJU G35 FED 25C-35 496/Wellbore #1)

Created By: Will Jircik

Date: 14:00, June 07 2021



## **Caerus Oil & Gas**

**Garfield County, CO**

**NPM G35 496 Pad**

**BJU G35 FED 25C-35 496 - Slot 25C-35**

**Wellbore #1**

**Plan: Design #2**

## **KLX Well Planning Report**

**07 June, 2021**



<b>Database:</b>	EDM 5000.1 Single User Db	<b>Local Co-ordinate Reference:</b>	Well BJU G35 FED 25C-35 496 - Slot 25C-35
<b>Company:</b>	Caerus Oil & Gas	<b>TVD Reference:</b>	RKB @ 8194.0usft (H&P#329)
<b>Project:</b>	Garfield County, CO	<b>MD Reference:</b>	RKB @ 8194.0usft (H&P#329)
<b>Site:</b>	NPM G35 496 Pad	<b>North Reference:</b>	True
<b>Well:</b>	BJU G35 FED 25C-35 496	<b>Survey Calculation Method:</b>	Minimum Curvature
<b>Wellbore:</b>	Wellbore #1		
<b>Design:</b>	Design #2		

<b>Project</b>	Garfield County, CO		
<b>Map System:</b>	Universal Transverse Mercator (US Survey Fee	<b>System Datum:</b>	Mean Sea Level
<b>Geo Datum:</b>	NAD 1927 - Western US		
<b>Map Zone:</b>	Zone 12N (114 W to 108 W)		

Site		NPM G35 496 Pad			
Site Position:		Northing:	14,415,365.20 usft	Latitude:	39.660667
From:	Map	Easting:	2,447,000.80 usft	Longitude:	-108.134301
Position Uncertainty:	0.0 usft	Slot Radius:	13-3/16 "	Grid Convergence:	1.83 °

Well	BJU G35 FED 25C-35 496 - Slot 25C-35					
Well Position	+N/-S	-132.6 usft	Northing:	14,415,236.20 usft	Latitude:	39.660303
	+E/-W	110.3 usft	Easting:	2,447,115.30 usft	Longitude:	-108.133910
Position Uncertainty	0.0 usft		Wellhead Elevation:		Ground Level:	8,164.0 usft

<b>Wellbore</b>	Wellbore #1				
<b>Magnetics</b>	<b>Model Name</b>	<b>Sample Date</b>	<b>Declination (°)</b>	<b>Dip Angle (°)</b>	<b>Field Strength (nT)</b>
	HDGM2020	12/11/2019	9.48	65.85	51,253.00000000

<b>Design</b>	Design #2			
<b>Audit Notes:</b>				
<b>Version:</b>	<b>Phase:</b>	PLAN	<b>Tie On Depth:</b>	0.0
<b>Vertical Section:</b>	<b>Depth From (TVD) (usft)</b>	<b>+N/-S (usft)</b>	<b>+E/-W (usft)</b>	<b>Direction (°)</b>
	0.0	0.0	0.0	167.50

<b>Plan Sections</b>										
Measured Depth (usft)	Inclination (°)	Azimuth (°)	Vertical Depth (usft)	+N/-S (usft)	+E/-W (usft)	Dogleg Rate (°/100usft)	Build Rate (°/100usft)	Turn Rate (°/100usft)	TFO (°)	Target
0.0	0.00	0.00	0.0	0.0	0.0	0.00	0.00	0.00	0.00	
200.0	0.00	0.00	200.0	0.0	0.0	0.00	0.00	0.00	0.00	
965.6	22.97	165.56	945.3	-146.6	37.8	3.00	3.00	0.00	165.56	
7,688.0	22.97	165.56	7,134.7	-2,686.9	692.0	0.00	0.00	0.00	0.00	
8,453.6	0.00	0.00	7,880.0	-2,833.6	729.8	3.00	-3.00	0.00	180.00	25C-35 - OHCR
8,557.4	1.56	250.00	7,983.8	-2,834.0	728.5	1.50	1.50	-105.98	250.00	
12,186.0	1.56	250.00	11,611.0	-2,867.8	635.8	0.00	0.00	0.00	0.00	25C-35 - PBHL

<b>Database:</b>	EDM 5000.1 Single User Db	<b>Local Co-ordinate Reference:</b>	Well BJU G35 FED 25C-35 496 - Slot 25C-35
<b>Company:</b>	Caerus Oil & Gas	<b>TVD Reference:</b>	RKB @ 8194.0usft (H&P#329)
<b>Project:</b>	Garfield County, CO	<b>MD Reference:</b>	RKB @ 8194.0usft (H&P#329)
<b>Site:</b>	NPM G35 496 Pad	<b>North Reference:</b>	True
<b>Well:</b>	BJU G35 FED 25C-35 496	<b>Survey Calculation Method:</b>	Minimum Curvature
<b>Wellbore:</b>	Wellbore #1		
<b>Design:</b>	Design #2		

Planned Survey									
Measured Depth (usft)	Inclination (°)	Azimuth (°)	Vertical Depth (usft)	+N/-S (usft)	+E/-W (usft)	Vertical Section (usft)	Dogleg Rate (°/100usft)	Build Rate (°/100usft)	Turn Rate (°/100usft)
0.0	0.00	0.00	0.0	0.0	0.0	0.0	0.00	0.00	0.00
100.0	0.00	0.00	100.0	0.0	0.0	0.0	0.00	0.00	0.00
<b>Build 3° / 100'</b>									
200.0	0.00	0.00	200.0	0.0	0.0	0.0	0.00	0.00	0.00
300.0	3.00	165.56	300.0	-2.5	0.7	2.6	3.00	3.00	0.00
400.0	6.00	165.56	399.6	-10.1	2.6	10.5	3.00	3.00	0.00
500.0	9.00	165.56	498.8	-22.8	5.9	23.5	3.00	3.00	0.00
600.0	12.00	165.56	597.1	-40.4	10.4	41.7	3.00	3.00	0.00
700.0	15.00	165.56	694.3	-63.0	16.2	65.0	3.00	3.00	0.00
800.0	18.00	165.56	790.2	-90.5	23.3	93.4	3.00	3.00	0.00
900.0	21.00	165.56	884.4	-122.8	31.6	126.8	3.00	3.00	0.00
<b>EOB @ 22.97° Inc. / 165.56° Azm</b>									
965.6	22.97	165.56	945.3	-146.6	37.8	151.3	3.00	3.00	0.00
1,000.0	22.97	165.56	976.9	-159.6	41.1	164.7	0.00	0.00	0.00
1,100.0	22.97	165.56	1,069.0	-197.4	50.8	203.7	0.00	0.00	0.00
1,200.0	22.97	165.56	1,161.1	-235.2	60.6	242.7	0.00	0.00	0.00
1,300.0	22.97	165.56	1,253.1	-273.0	70.3	281.7	0.00	0.00	0.00
1,400.0	22.97	165.56	1,345.2	-310.8	80.0	320.7	0.00	0.00	0.00
1,500.0	22.97	165.56	1,437.3	-348.6	89.8	359.7	0.00	0.00	0.00
1,600.0	22.97	165.56	1,529.4	-386.4	99.5	398.7	0.00	0.00	0.00
1,700.0	22.97	165.56	1,621.4	-424.1	109.2	437.7	0.00	0.00	0.00
1,800.0	22.97	165.56	1,713.5	-461.9	119.0	476.7	0.00	0.00	0.00
1,900.0	22.97	165.56	1,805.6	-499.7	128.7	515.7	0.00	0.00	0.00
2,000.0	22.97	165.56	1,897.7	-537.5	138.4	554.7	0.00	0.00	0.00
2,100.0	22.97	165.56	1,989.7	-575.3	148.2	593.7	0.00	0.00	0.00
2,200.0	22.97	165.56	2,081.8	-613.1	157.9	632.7	0.00	0.00	0.00
2,300.0	22.97	165.56	2,173.9	-650.9	167.6	671.7	0.00	0.00	0.00
2,400.0	22.97	165.56	2,265.9	-688.7	177.4	710.7	0.00	0.00	0.00
2,500.0	22.97	165.56	2,358.0	-726.5	187.1	749.7	0.00	0.00	0.00
2,600.0	22.97	165.56	2,450.1	-764.2	196.8	788.7	0.00	0.00	0.00
<b>Wasatch</b>									
2,670.5	22.97	165.56	2,515.0	-790.9	203.7	816.2	0.00	0.00	0.00
2,700.0	22.97	165.56	2,542.2	-802.0	206.6	827.7	0.00	0.00	0.00
2,800.0	22.97	165.56	2,634.2	-839.8	216.3	866.7	0.00	0.00	0.00
2,900.0	22.97	165.56	2,726.3	-877.6	226.0	905.7	0.00	0.00	0.00
3,000.0	22.97	165.56	2,818.4	-915.4	235.8	944.7	0.00	0.00	0.00
3,100.0	22.97	165.56	2,910.4	-953.2	245.5	983.7	0.00	0.00	0.00
3,200.0	22.97	165.56	3,002.5	-991.0	255.2	1,022.7	0.00	0.00	0.00
3,300.0	22.97	165.56	3,094.6	-1,028.8	265.0	1,061.7	0.00	0.00	0.00
3,400.0	22.97	165.56	3,186.7	-1,066.6	274.7	1,100.7	0.00	0.00	0.00
3,500.0	22.97	165.56	3,278.7	-1,104.3	284.4	1,139.7	0.00	0.00	0.00
3,600.0	22.97	165.56	3,370.8	-1,142.1	294.2	1,178.7	0.00	0.00	0.00
3,700.0	22.97	165.56	3,462.9	-1,179.9	303.9	1,217.7	0.00	0.00	0.00
3,800.0	22.97	165.56	3,555.0	-1,217.7	313.6	1,256.7	0.00	0.00	0.00
3,900.0	22.97	165.56	3,647.0	-1,255.5	323.4	1,295.7	0.00	0.00	0.00
4,000.0	22.97	165.56	3,739.1	-1,293.3	333.1	1,334.7	0.00	0.00	0.00
4,100.0	22.97	165.56	3,831.2	-1,331.1	342.8	1,373.7	0.00	0.00	0.00
4,200.0	22.97	165.56	3,923.2	-1,368.9	352.6	1,412.7	0.00	0.00	0.00
4,300.0	22.97	165.56	4,015.3	-1,406.7	362.3	1,451.7	0.00	0.00	0.00
4,400.0	22.97	165.56	4,107.4	-1,444.4	372.0	1,490.7	0.00	0.00	0.00
4,500.0	22.97	165.56	4,199.5	-1,482.2	381.8	1,529.7	0.00	0.00	0.00
4,600.0	22.97	165.56	4,291.5	-1,520.0	391.5	1,568.7	0.00	0.00	0.00
4,700.0	22.97	165.56	4,383.6	-1,557.8	401.2	1,607.7	0.00	0.00	0.00

<b>Database:</b>	EDM 5000.1 Single User Db	<b>Local Co-ordinate Reference:</b>	Well BJU G35 FED 25C-35 496 - Slot 25C-35
<b>Company:</b>	Caerus Oil & Gas	<b>TVD Reference:</b>	RKB @ 8194.0usft (H&P#329)
<b>Project:</b>	Garfield County, CO	<b>MD Reference:</b>	RKB @ 8194.0usft (H&P#329)
<b>Site:</b>	NPM G35 496 Pad	<b>North Reference:</b>	True
<b>Well:</b>	BJU G35 FED 25C-35 496	<b>Survey Calculation Method:</b>	Minimum Curvature
<b>Wellbore:</b>	Wellbore #1		
<b>Design:</b>	Design #2		

Planned Survey									
Measured Depth (usft)	Inclination (°)	Azimuth (°)	Vertical Depth (usft)	+N/-S (usft)	+E/-W (usft)	Vertical Section (usft)	Dogleg Rate (°/100usft)	Build Rate (°/100usft)	Turn Rate (°/100usft)
4,800.0	22.97	165.56	4,475.7	-1,595.6	411.0	1,646.7	0.00	0.00	0.00
4,900.0	22.97	165.56	4,567.7	-1,633.4	420.7	1,685.7	0.00	0.00	0.00
5,000.0	22.97	165.56	4,659.8	-1,671.2	430.4	1,724.7	0.00	0.00	0.00
5,100.0	22.97	165.56	4,751.9	-1,709.0	440.2	1,763.7	0.00	0.00	0.00
5,200.0	22.97	165.56	4,844.0	-1,746.7	449.9	1,802.7	0.00	0.00	0.00
5,300.0	22.97	165.56	4,936.0	-1,784.5	459.6	1,841.7	0.00	0.00	0.00
5,400.0	22.97	165.56	5,028.1	-1,822.3	469.4	1,880.7	0.00	0.00	0.00
5,500.0	22.97	165.56	5,120.2	-1,860.1	479.1	1,919.7	0.00	0.00	0.00
5,600.0	22.97	165.56	5,212.3	-1,897.9	488.8	1,958.7	0.00	0.00	0.00
5,700.0	22.97	165.56	5,304.3	-1,935.7	498.5	1,997.7	0.00	0.00	0.00
5,800.0	22.97	165.56	5,396.4	-1,973.5	508.3	2,036.7	0.00	0.00	0.00
5,900.0	22.97	165.56	5,488.5	-2,011.3	518.0	2,075.7	0.00	0.00	0.00
<b>Wasatch G</b>									
5,928.8	22.97	165.56	5,515.0	-2,022.2	520.8	2,087.0	0.00	0.00	0.00
6,000.0	22.97	165.56	5,580.5	-2,049.1	527.7	2,114.7	0.00	0.00	0.00
6,100.0	22.97	165.56	5,672.6	-2,086.8	537.5	2,153.7	0.00	0.00	0.00
6,200.0	22.97	165.56	5,764.7	-2,124.6	547.2	2,192.7	0.00	0.00	0.00
<b>Fort Union</b>									
6,273.1	22.97	165.56	5,832.0	-2,152.3	554.3	2,221.2	0.00	0.00	0.00
6,300.0	22.97	165.56	5,856.8	-2,162.4	556.9	2,231.7	0.00	0.00	0.00
6,400.0	22.97	165.56	5,948.8	-2,200.2	566.7	2,270.7	0.00	0.00	0.00
6,500.0	22.97	165.56	6,040.9	-2,238.0	576.4	2,309.7	0.00	0.00	0.00
6,600.0	22.97	165.56	6,133.0	-2,275.8	586.1	2,348.7	0.00	0.00	0.00
6,700.0	22.97	165.56	6,225.0	-2,313.6	595.9	2,387.7	0.00	0.00	0.00
6,800.0	22.97	165.56	6,317.1	-2,351.4	605.6	2,426.7	0.00	0.00	0.00
6,900.0	22.97	165.56	6,409.2	-2,389.2	615.3	2,465.7	0.00	0.00	0.00
7,000.0	22.97	165.56	6,501.3	-2,426.9	625.1	2,504.7	0.00	0.00	0.00
7,100.0	22.97	165.56	6,593.3	-2,464.7	634.8	2,543.7	0.00	0.00	0.00
7,200.0	22.97	165.56	6,685.4	-2,502.5	644.5	2,582.7	0.00	0.00	0.00
7,300.0	22.97	165.56	6,777.5	-2,540.3	654.3	2,621.7	0.00	0.00	0.00
7,400.0	22.97	165.56	6,869.6	-2,578.1	664.0	2,660.7	0.00	0.00	0.00
7,500.0	22.97	165.56	6,961.6	-2,615.9	673.7	2,699.7	0.00	0.00	0.00
7,600.0	22.97	165.56	7,053.7	-2,653.7	683.5	2,738.7	0.00	0.00	0.00
<b>Drop 3° /100'</b>									
7,688.0	22.97	165.56	7,134.7	-2,686.9	692.0	2,773.0	0.00	0.00	0.00
7,700.0	22.61	165.56	7,145.8	-2,691.4	693.2	2,777.7	3.00	-3.00	0.00
7,800.0	19.61	165.56	7,239.1	-2,726.3	702.2	2,813.7	3.00	-3.00	0.00
7,900.0	16.61	165.56	7,334.1	-2,756.4	709.9	2,844.7	3.00	-3.00	0.00
8,000.0	13.61	165.56	7,430.6	-2,781.6	716.4	2,870.8	3.00	-3.00	0.00
8,100.0	10.61	165.56	7,528.4	-2,802.0	721.7	2,891.7	3.00	-3.00	0.00
8,200.0	7.61	165.56	7,627.1	-2,817.3	725.6	2,907.6	3.00	-3.00	0.00
8,300.0	4.61	165.56	7,726.5	-2,827.6	728.3	2,918.2	3.00	-3.00	0.00
8,400.0	1.61	165.56	7,826.4	-2,832.8	729.6	2,923.6	3.00	-3.00	0.00
<b>EOD @ Vertical / Build 1.5° / 100' - Ohio Creek - TOG</b>									
8,453.6	0.00	0.00	7,880.0	-2,833.6	729.8	2,924.4	3.00	-3.00	0.00
8,500.0	0.70	250.00	7,926.4	-2,833.7	729.5	2,924.4	1.50	1.50	0.00
<b>EOB @ 1.56° Inc. / 250.00° Azm</b>									
8,557.4	1.56	250.00	7,983.8	-2,834.0	728.5	2,924.5	1.50	1.50	0.00
8,600.0	1.56	250.00	8,026.3	-2,834.4	727.4	2,924.7	0.00	0.00	0.00
<b>Williams Fork</b>									
8,687.7	1.56	250.00	8,114.0	-2,835.3	725.1	2,925.0	0.00	0.00	0.00
8,700.0	1.56	250.00	8,126.3	-2,835.4	724.8	2,925.0	0.00	0.00	0.00
8,800.0	1.56	250.00	8,226.3	-2,836.3	722.3	2,925.4	0.00	0.00	0.00

<b>Database:</b>	EDM 5000.1 Single User Db	<b>Local Co-ordinate Reference:</b>	Well BJU G35 FED 25C-35 496 - Slot 25C-35
<b>Company:</b>	Caerus Oil & Gas	<b>TVD Reference:</b>	RKB @ 8194.0usft (H&P#329)
<b>Project:</b>	Garfield County, CO	<b>MD Reference:</b>	RKB @ 8194.0usft (H&P#329)
<b>Site:</b>	NPM G35 496 Pad	<b>North Reference:</b>	True
<b>Well:</b>	BJU G35 FED 25C-35 496	<b>Survey Calculation Method:</b>	Minimum Curvature
<b>Wellbore:</b>	Wellbore #1		
<b>Design:</b>	Design #2		

Planned Survey									
Measured Depth (usft)	Inclination (°)	Azimuth (°)	Vertical Depth (usft)	+N/-S (usft)	+E/-W (usft)	Vertical Section (usft)	Dogleg Rate (°/100usft)	Build Rate (°/100usft)	Turn Rate (°/100usft)
8,900.0	1.56	250.00	8,326.2	-2,837.2	719.7	2,925.8	0.00	0.00	0.00
9,000.0	1.56	250.00	8,426.2	-2,838.2	717.2	2,926.1	0.00	0.00	0.00
9,100.0	1.56	250.00	8,526.2	-2,839.1	714.6	2,926.5	0.00	0.00	0.00
9,200.0	1.56	250.00	8,626.1	-2,840.0	712.1	2,926.8	0.00	0.00	0.00
9,300.0	1.56	250.00	8,726.1	-2,840.9	709.5	2,927.2	0.00	0.00	0.00
9,400.0	1.56	250.00	8,826.1	-2,841.9	707.0	2,927.5	0.00	0.00	0.00
9,500.0	1.56	250.00	8,926.0	-2,842.8	704.4	2,927.9	0.00	0.00	0.00
9,600.0	1.56	250.00	9,026.0	-2,843.7	701.9	2,928.2	0.00	0.00	0.00
9,700.0	1.56	250.00	9,125.9	-2,844.7	699.3	2,928.6	0.00	0.00	0.00
9,800.0	1.56	250.00	9,225.9	-2,845.6	696.8	2,928.9	0.00	0.00	0.00
9,900.0	1.56	250.00	9,325.9	-2,846.5	694.2	2,929.3	0.00	0.00	0.00
10,000.0	1.56	250.00	9,425.8	-2,847.5	691.6	2,929.7	0.00	0.00	0.00
10,100.0	1.56	250.00	9,525.8	-2,848.4	689.1	2,930.0	0.00	0.00	0.00
10,200.0	1.56	250.00	9,625.8	-2,849.3	686.5	2,930.4	0.00	0.00	0.00
10,300.0	1.56	250.00	9,725.7	-2,850.2	684.0	2,930.7	0.00	0.00	0.00
10,400.0	1.56	250.00	9,825.7	-2,851.2	681.4	2,931.1	0.00	0.00	0.00
10,500.0	1.56	250.00	9,925.6	-2,852.1	678.9	2,931.4	0.00	0.00	0.00
10,600.0	1.56	250.00	10,025.6	-2,853.0	676.3	2,931.8	0.00	0.00	0.00
10,700.0	1.56	250.00	10,125.6	-2,854.0	673.8	2,932.1	0.00	0.00	0.00
10,800.0	1.56	250.00	10,225.5	-2,854.9	671.2	2,932.5	0.00	0.00	0.00
10,900.0	1.56	250.00	10,325.5	-2,855.8	668.7	2,932.9	0.00	0.00	0.00
11,000.0	1.56	250.00	10,425.5	-2,856.7	666.1	2,933.2	0.00	0.00	0.00
11,100.0	1.56	250.00	10,525.4	-2,857.7	663.6	2,933.6	0.00	0.00	0.00
11,200.0	1.56	250.00	10,625.4	-2,858.6	661.0	2,933.9	0.00	0.00	0.00
11,300.0	1.56	250.00	10,725.4	-2,859.5	658.5	2,934.3	0.00	0.00	0.00
<b>Cameo</b>									
11,399.7	1.56	250.00	10,825.0	-2,860.5	655.9	2,934.6	0.00	0.00	0.00
11,400.0	1.56	250.00	10,825.3	-2,860.5	655.9	2,934.6	0.00	0.00	0.00
11,500.0	1.56	250.00	10,925.3	-2,861.4	653.3	2,935.0	0.00	0.00	0.00
11,600.0	1.56	250.00	11,025.2	-2,862.3	650.8	2,935.3	0.00	0.00	0.00
11,700.0	1.56	250.00	11,125.2	-2,863.3	648.2	2,935.7	0.00	0.00	0.00
11,800.0	1.56	250.00	11,225.2	-2,864.2	645.7	2,936.0	0.00	0.00	0.00
11,900.0	1.56	250.00	11,325.1	-2,865.1	643.1	2,936.4	0.00	0.00	0.00
<b>Rollins</b>									
11,985.9	1.56	250.00	11,411.0	-2,865.9	640.9	2,936.7	0.00	0.00	0.00
12,000.0	1.56	250.00	11,425.1	-2,866.0	640.6	2,936.8	0.00	0.00	0.00
12,100.0	1.56	250.00	11,525.1	-2,867.0	638.0	2,937.1	0.00	0.00	0.00
<b>TD @ 12186.0' MD / 11611.0' TVD</b>									
12,186.0	1.56	250.00	11,611.0	-2,867.8	635.8	2,937.4	0.00	0.00	0.00

Design Targets									
Target Name	Dip Angle (°)	Dip Dir. (°)	TVD (usft)	+N/-S (usft)	+E/-W (usft)	Northing (usft)	Easting (usft)	Latitude	Longitude
25C-35 - OHCR - hit/miss target - Shape - Point	0.00	0.00	7,880.0	-2,833.6	729.8	14,412,427.39	2,447,935.23	39.652527	-108.131319
25C-35 - PBHL - plan hits target center - Ellipse (radii L100.0 W50.0 on 250.00 azi)	0.00	0.00	11,611.0	-2,867.8	635.8	14,412,390.20	2,447,842.40	39.652433	-108.131652

<b>Database:</b>	EDM 5000.1 Single User Db	<b>Local Co-ordinate Reference:</b>	Well BJU G35 FED 25C-35 496 - Slot 25C-35
<b>Company:</b>	Caerus Oil & Gas	<b>TVD Reference:</b>	RKB @ 8194.0usft (H&P#329)
<b>Project:</b>	Garfield County, CO	<b>MD Reference:</b>	RKB @ 8194.0usft (H&P#329)
<b>Site:</b>	NPM G35 496 Pad	<b>North Reference:</b>	True
<b>Well:</b>	BJU G35 FED 25C-35 496	<b>Survey Calculation Method:</b>	Minimum Curvature
<b>Wellbore:</b>	Wellbore #1		
<b>Design:</b>	Design #2		

Formations						
Measured Depth (usft)	Vertical Depth (usft)	Name	Lithology	Dip (°)	Dip Direction (°)	
2,670.5	2,515.0	Wasatch				
5,928.8	5,515.0	Wasatch G				
6,273.1	5,832.0	Fort Union				
8,453.6	7,880.0	Ohio Creek				
8,453.6	7,880.0	TOG				
8,687.7	8,114.0	Williams Fork				
11,399.7	10,825.0	Cameo				
11,985.9	11,411.0	Rollins				

Plan Annotations					
Measured Depth (usft)	Vertical Depth (usft)	Local Coordinates			
		+N/-S (usft)	+E/-W (usft)	Comment	
200.0	200.0	0.0	0.0	Build 3° / 100'	
965.6	945.3	-146.6	37.8	EOB @ 22.97° Inc. / 165.56° Azm	
7,688.0	7,134.7	-2,686.9	692.0	Drop 3° / 100'	
8,453.6	7,880.0	-2,833.6	729.8	EOD @ Vertical / Build 1.5° / 100'	
8,557.4	7,983.8	-2,834.0	728.5	EOB @ 1.56° Inc. / 250.00° Azm	
12,186.0	11,611.0	-2,867.8	635.8	TD @ 12186.0' MD / 11611.0' TVD	