

Location Name: SAWTOOTH 34-4 WD, API #: 071-06706, Insp. #:695104458



PHOTO 1: LOCATION

37.19589, -104.67416

ft
±11ft

6804

°T
±14

NW32

EVERGREEN

NATURAL RESOURCES LLC

SAWTOOTH 34-4 WD

API 05-071-06706

SW SE SECTION 4-33S-65W

CR 51

LAT. 37.19565/LONG. -104.67372

EMERGENCY No. 911 or 719-846-7898 (24 Hrs)

& Gas Conservation commission
11:47:53

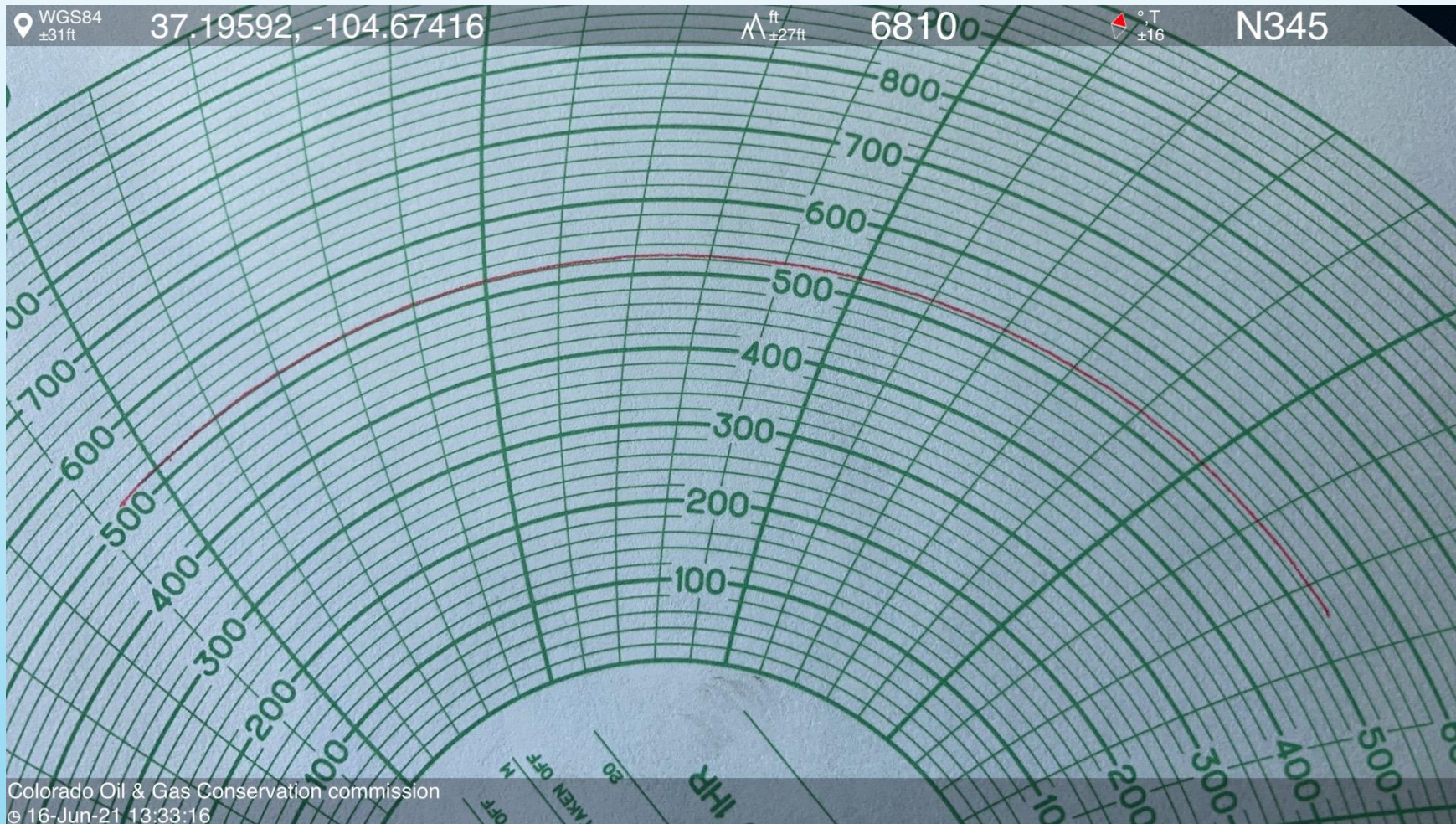


PHOTO 3: 5 YEAR UIC MIT PRESSURE CHART.