

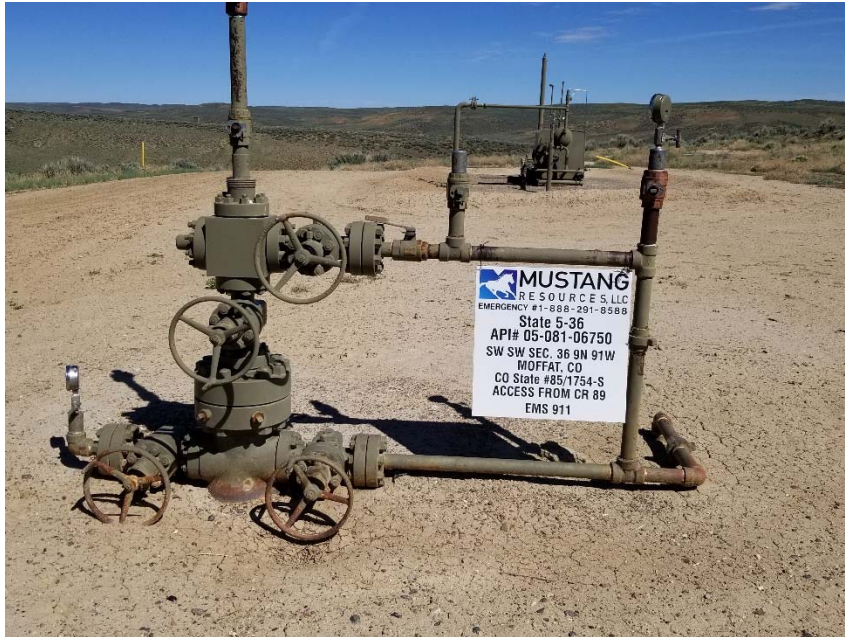
**Inspection Photos**  
**Location Name: State 5-36**  
**Location ID: 313027**



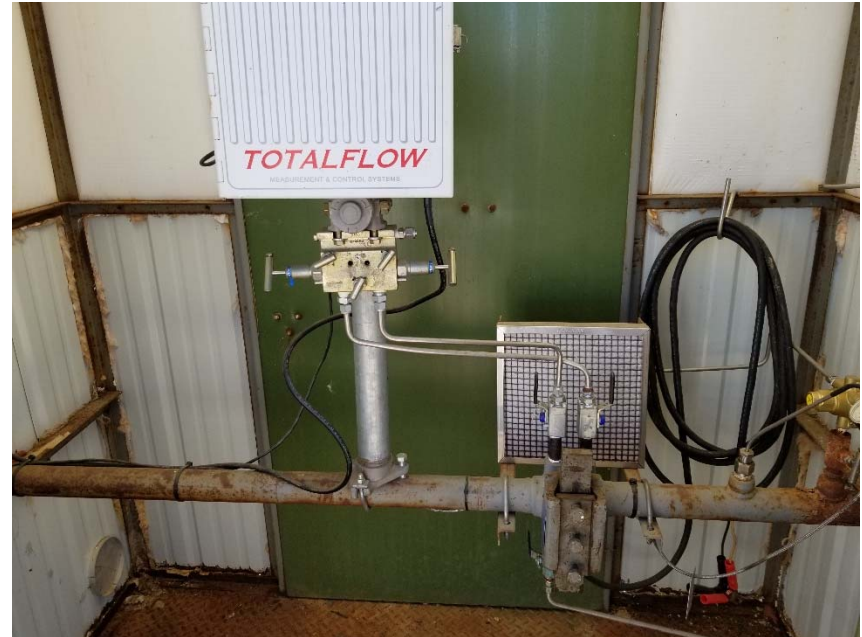
**Photo 1. Overview of location taken facing south.**



**Inspection Photos**  
**Location Name: State 5-36**  
**Location ID: 313027**



**Photo 2. Previous operator information and emergency contact information on location signs.**



**Photo 3. Gas meter run without calibration.**

