

Bison Oil & Gas II, LLC

WELD COUNTY, COLORADO (NAD 83)

ROSS 8-60 18 SESW & SWSE SEC 18 T8N R60W 6th P.M.

ROSS 8-60 18-7-6

Wellbore #1

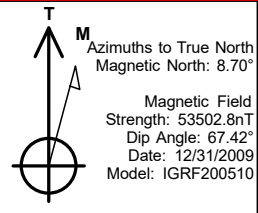
Plan: Design #1

Standard Survey Report

12 April, 2021



Project: WELD COUNTY, COLORADO (NAD 83)
Site: ROSS 8-60 18 SESW & SWSE SEC 18 T8N R60W 6th P.M.
Well: ROSS 8-60 18-7-6
Wellbore: Wellbore #1
Design: Design #1



ANNOTATIONS

MD	Inc	Azi	TVD	+N/-S	+E/-W	VSec	Departure	Annotation
800.0	0.00	0.00	800.0	0.0	0.0	0.0	0.0	Start Build 1.50
1817.1	15.26	105.52	1805.2	-36.0	129.7	-19.3	134.6	Start 3237.8 hold at 1817.1 MD
5054.9	15.26	105.52	4928.8	-264.0	950.7	-141.7	986.7	Start Drop -1.50
6072.1	0.00	0.00	5934.0	-300.0	1080.4	-161.1	1121.3	Start Build 10.00
6972.1	90.00	0.00	6507.0	273.0	1080.4	407.3	1694.2	Start DLS 0.01 TFO 180.00
7160.4	89.98	0.00	6507.0	461.3	1080.4	594.1	1882.6	Start DLS 0.01 TFO 88.16
15728.9	90.02	1.15	6507.0	9029.2	1166.3	9104.2	10451.1	Start 149.5 hold at 15728.9 MD
15878.3	90.02	1.15	6506.9	9178.6	1169.3	9252.8	10600.5	TD at 15878.3

PROPOSED LOCAL COORDINATES:

SHL: 545 ft FSL & 2576 ft FWL Sec 18

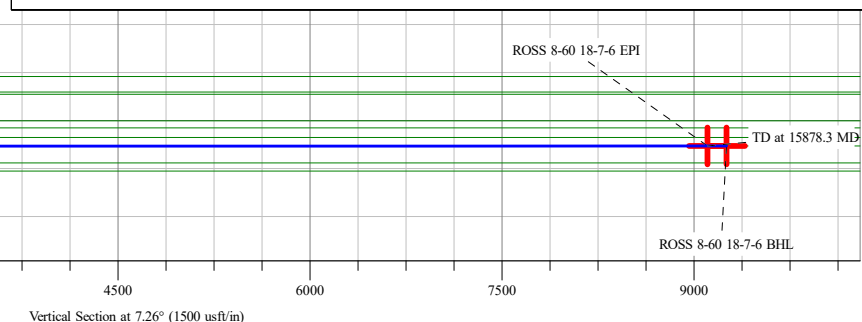
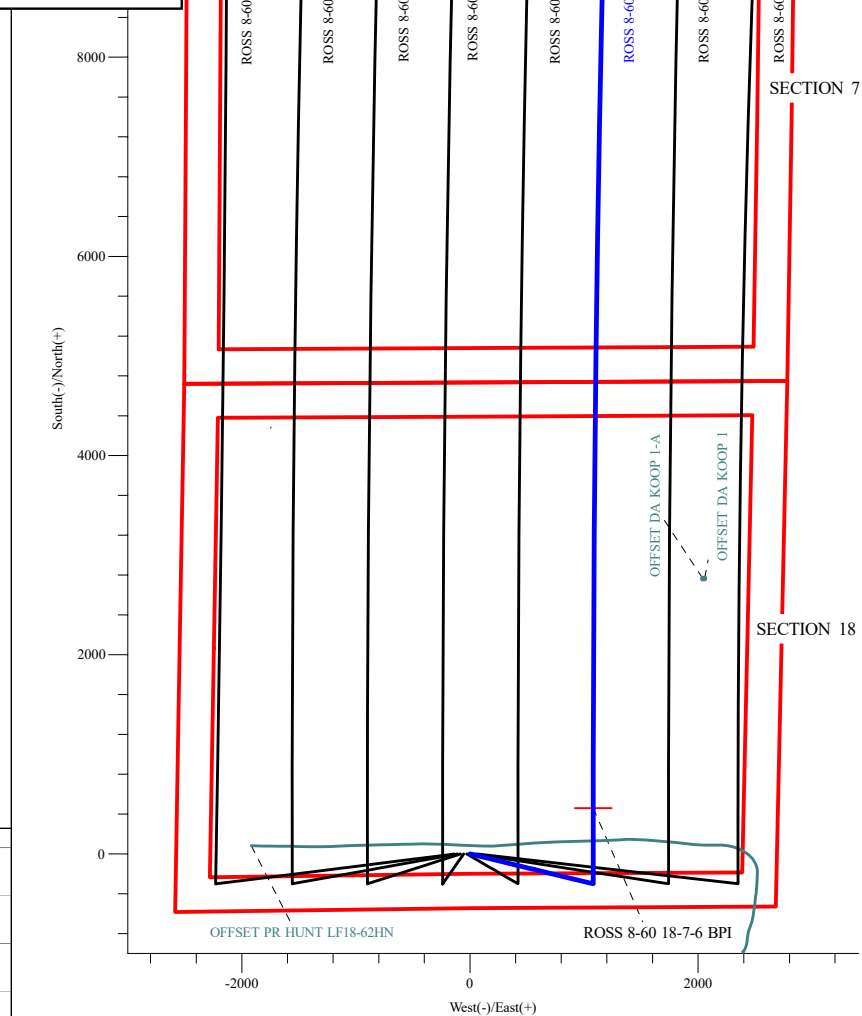
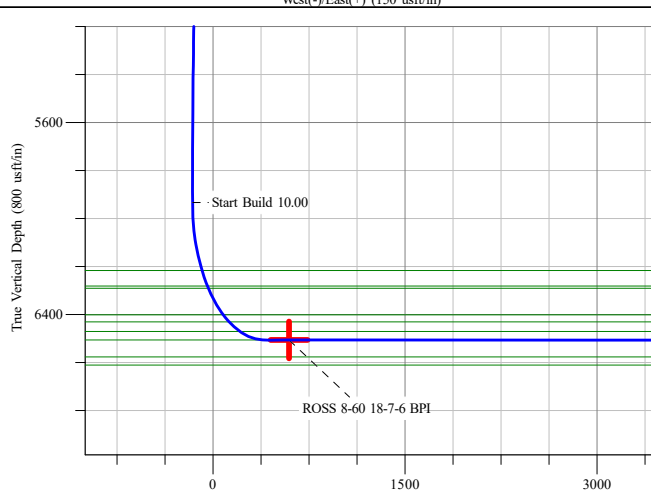
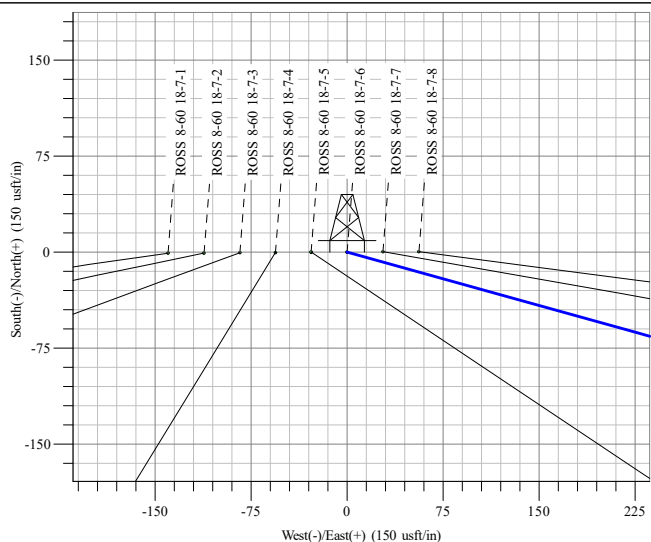
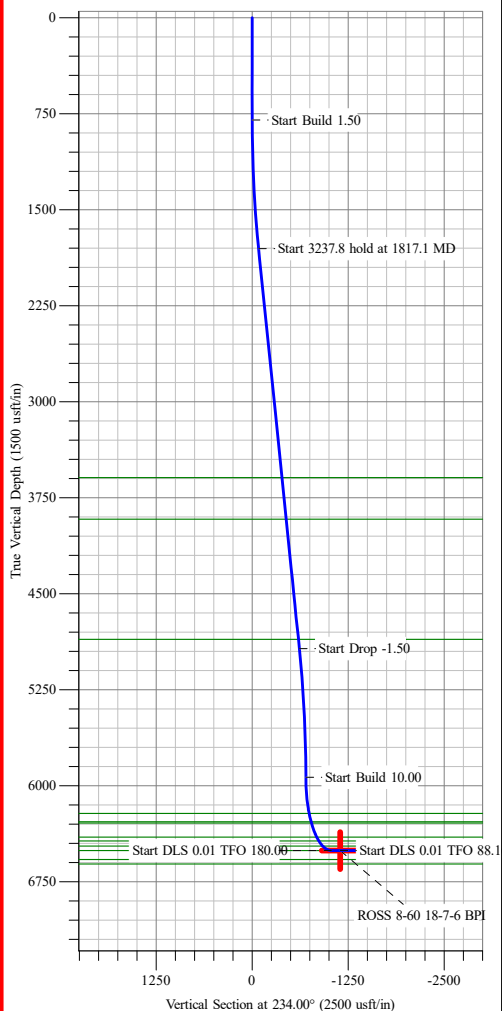
BPI: 1000 ft FSL & 1619 ft FEL Sec 18

EPI: 1000 ft FNL & 1671 ft FEL Sec 7

BHL: 850 ft FNL & 1672 ft FEL Sec 7

WELLBORE TARGET DETAILS (LAT/LONG)

Name	TVD	+N/-S	+E/-W	Northing	Easting	Latitude	Longitude
ROSS 8-60 18-7-6 BHL	6507.0	9178.9	1166.8	1494113.52	3379837.44	40° 40' 54.059 N 104° 7' 49.573 W	
ROSS 8-60 18-7-6 BPI	6507.0	461.3	1080.4	1485395.71	3379885.24	40° 39' 27.918 N 104° 7' 50.700 W	
ROSS 8-60 18-7-6 EPI	6507.0	9029.2	1166.3	1493963.79	3379839.20	40° 40' 52.579 N 104° 7' 49.580 W	Point



Survey Report

Company:	Bison Oil & Gas II, LLC	Local Co-ordinate Reference:	Well ROSS 8-60 18-7-6
Project:	WELD COUNTY, COLORADO (NAD 83)	TVD Reference:	WELL @ 4953.0usft (Original Well Elev)
Site:	ROSS 8-60 18 SESW & SWSE SEC 18 T8N R60W 6th P.M.	MD Reference:	WELL @ 4953.0usft (Original Well Elev)
Well:	ROSS 8-60 18-7-6	North Reference:	True
Wellbore:	Wellbore #1	Survey Calculation Method:	Minimum Curvature
Design:	Design #1	Database:	EDM 5000.16 Single User Db

Project	WELD COUNTY, COLORADO (NAD 83),		
Map System:	US State Plane 1983	System Datum:	Mean Sea Level
Geo Datum:	North American Datum 1983		
Map Zone:	Colorado Northern Zone		Using geodetic scale factor

Site	ROSS 8-60 18 SESW & SWSE SEC 18 T8N R60W 6th P.M.		
Site Position:		Northing:	1,484,919.11 usft
From:	Lat/Long	Easting:	3,378,868.10 usft
Position Uncertainty:	0.0 usft	Slot Radius:	13-3/16 "
		Latitude:	40° 39' 23.364 N
		Longitude:	104° 8' 3.991 W

Well	ROSS 8-60 18-7-6		
Well Position	+N/-S	0.0 usft	Northing: 1,484,917.87 usft
	+E/-W	0.0 usft	Easting: 3,378,812.07 usft
Position Uncertainty	0.0 usft	Wellhead Elevation:	usft
Grid Convergence:	0.88 °	Ground Level:	4,951.5 usft

Wellbore	Wellbore #1		
-----------------	-------------	--	--

Magnetics	Model Name	Sample Date	Declination (°)	Dip Angle (°)	Field Strength (nT)
	IGRF200510	12/31/2009	8.70	67.42	53,502.80677077

Design	Design #1		
---------------	-----------	--	--

Audit Notes:			
Version:	Phase:	PROTOTYPE	Tie On Depth: 0.0

Vertical Section:	Depth From (TVD) (usft)	+N/-S (usft)	+E/-W (usft)	Direction (°)
	0.0	0.0	0.0	7.26

Survey Tool Program		Date	4/12/2021		
From (usft)	To (usft)	Survey (Wellbore)	Tool Name	Description	
0.0	15,878.4	Design #1 (Wellbore #1)	MWD	Fixed:v2:standard declination	

Planned Survey									
Measured Depth (usft)	Inclination (°)	Azimuth (°)	Vertical Depth (usft)	+N/-S (usft)	+E/-W (usft)	Vertical Section (usft)	Dogleg Rate (°/100usft)	Build Rate (°/100usft)	Turn Rate (°/100usft)
0.0	0.00	0.00	0.0	0.0	0.0	0.0	0.00	0.00	0.00
100.0	0.00	0.00	100.0	0.0	0.0	0.0	0.00	0.00	0.00
200.0	0.00	0.00	200.0	0.0	0.0	0.0	0.00	0.00	0.00
300.0	0.00	0.00	300.0	0.0	0.0	0.0	0.00	0.00	0.00
400.0	0.00	0.00	400.0	0.0	0.0	0.0	0.00	0.00	0.00
500.0	0.00	0.00	500.0	0.0	0.0	0.0	0.00	0.00	0.00
600.0	0.00	0.00	600.0	0.0	0.0	0.0	0.00	0.00	0.00
700.0	0.00	0.00	700.0	0.0	0.0	0.0	0.00	0.00	0.00
800.0	0.00	0.00	800.0	0.0	0.0	0.0	0.00	0.00	0.00

Survey Report

Company:	Bison Oil & Gas II, LLC	Local Co-ordinate Reference:	Well ROSS 8-60 18-7-6
Project:	WELD COUNTY, COLORADO (NAD 83)	TVD Reference:	WELL @ 4953.0usft (Original Well Elev)
Site:	ROSS 8-60 18 SESW & SWSE SEC 18 T8N R60W 6th P.M.	MD Reference:	WELL @ 4953.0usft (Original Well Elev)
Well:	ROSS 8-60 18-7-6	North Reference:	True
Wellbore:	Wellbore #1	Survey Calculation Method:	Minimum Curvature
Design:	Design #1	Database:	EDM 5000.16 Single User Db

Planned Survey

Measured Depth (usft)	Inclination (°)	Azimuth (°)	Vertical Depth (usft)	+N/-S (usft)	+E/-W (usft)	Vertical Section (usft)	Dogleg Rate (°/100usft)	Build Rate (°/100usft)	Turn Rate (°/100usft)
Start Build 1.50									
900.0	1.50	105.52	900.0	-0.4	1.3	-0.2	1.50	1.50	0.00
1,000.0	3.00	105.52	999.9	-1.4	5.0	-0.8	1.50	1.50	0.00
1,100.0	4.50	105.52	1,099.7	-3.2	11.3	-1.7	1.50	1.50	0.00
1,200.0	6.00	105.52	1,199.3	-5.6	20.2	-3.0	1.50	1.50	0.00
1,300.0	7.50	105.52	1,298.6	-8.7	31.5	-4.7	1.50	1.50	0.00
1,400.0	9.00	105.52	1,397.5	-12.6	45.3	-6.8	1.50	1.50	0.00
1,500.0	10.50	105.52	1,496.1	-17.1	61.6	-9.2	1.50	1.50	0.00
1,600.0	12.00	105.52	1,594.2	-22.3	80.4	-12.0	1.50	1.50	0.00
1,700.0	13.50	105.52	1,691.7	-28.2	101.7	-15.2	1.50	1.50	0.00
1,800.0	15.00	105.52	1,788.6	-34.8	125.4	-18.7	1.50	1.50	0.00
1,817.1	15.26	105.52	1,805.2	-36.0	129.7	-19.3	1.50	1.50	0.00
Start 3237.8 hold at 1817.1 MD									
1,900.0	15.26	105.52	1,885.1	-41.9	150.7	-22.5	0.00	0.00	0.00
2,000.0	15.26	105.52	1,981.6	-48.9	176.1	-26.2	0.00	0.00	0.00
2,100.0	15.26	105.52	2,078.0	-55.9	201.4	-30.0	0.00	0.00	0.00
2,200.0	15.26	105.52	2,174.5	-63.0	226.8	-33.8	0.00	0.00	0.00
2,300.0	15.26	105.52	2,271.0	-70.0	252.2	-37.6	0.00	0.00	0.00
2,400.0	15.26	105.52	2,367.5	-77.1	277.5	-41.4	0.00	0.00	0.00
2,500.0	15.26	105.52	2,463.9	-84.1	302.9	-45.1	0.00	0.00	0.00
2,600.0	15.26	105.52	2,560.4	-91.1	328.2	-48.9	0.00	0.00	0.00
2,700.0	15.26	105.52	2,656.9	-98.2	353.6	-52.7	0.00	0.00	0.00
2,800.0	15.26	105.52	2,753.4	-105.2	378.9	-56.5	0.00	0.00	0.00
2,900.0	15.26	105.52	2,849.8	-112.3	404.3	-60.3	0.00	0.00	0.00
3,000.0	15.26	105.52	2,946.3	-119.3	429.6	-64.0	0.00	0.00	0.00
3,100.0	15.26	105.52	3,042.8	-126.3	455.0	-67.8	0.00	0.00	0.00
3,200.0	15.26	105.52	3,139.3	-133.4	480.4	-71.6	0.00	0.00	0.00
3,300.0	15.26	105.52	3,235.8	-140.4	505.7	-75.4	0.00	0.00	0.00
3,400.0	15.26	105.52	3,332.2	-147.5	531.1	-79.2	0.00	0.00	0.00
3,500.0	15.26	105.52	3,428.7	-154.5	556.4	-82.9	0.00	0.00	0.00
3,600.0	15.26	105.52	3,525.2	-161.5	581.8	-86.7	0.00	0.00	0.00
3,700.0	15.26	105.52	3,621.7	-168.6	607.1	-90.5	0.00	0.00	0.00
3,800.0	15.26	105.52	3,718.1	-175.6	632.5	-94.3	0.00	0.00	0.00
3,900.0	15.26	105.52	3,814.6	-182.7	657.8	-98.1	0.00	0.00	0.00
4,000.0	15.26	105.52	3,911.1	-189.7	683.2	-101.8	0.00	0.00	0.00
4,100.0	15.26	105.52	4,007.6	-196.7	708.6	-105.6	0.00	0.00	0.00
4,200.0	15.26	105.52	4,104.0	-203.8	733.9	-109.4	0.00	0.00	0.00
4,300.0	15.26	105.52	4,200.5	-210.8	759.3	-113.2	0.00	0.00	0.00
4,400.0	15.26	105.52	4,297.0	-217.9	784.6	-117.0	0.00	0.00	0.00
4,500.0	15.26	105.52	4,393.5	-224.9	810.0	-120.7	0.00	0.00	0.00
4,600.0	15.26	105.52	4,489.9	-231.9	835.3	-124.5	0.00	0.00	0.00
4,700.0	15.26	105.52	4,586.4	-239.0	860.7	-128.3	0.00	0.00	0.00
4,800.0	15.26	105.52	4,682.9	-246.0	886.1	-132.1	0.00	0.00	0.00

Survey Report

Company:	Bison Oil & Gas II, LLC	Local Co-ordinate Reference:	Well ROSS 8-60 18-7-6
Project:	WELD COUNTY, COLORADO (NAD 83)	TVD Reference:	WELL @ 4953.0usft (Original Well Elev)
Site:	ROSS 8-60 18 SESW & SWSE SEC 18 T8N R60W 6th P.M.	MD Reference:	WELL @ 4953.0usft (Original Well Elev)
Well:	ROSS 8-60 18-7-6	North Reference:	True
Wellbore:	Wellbore #1	Survey Calculation Method:	Minimum Curvature
Design:	Design #1	Database:	EDM 5000.16 Single User Db

Planned Survey

Measured Depth (usft)	Inclination (°)	Azimuth (°)	Vertical Depth (usft)	+N/-S (usft)	+E/-W (usft)	Vertical Section (usft)	Dogleg Rate (°/100usft)	Build Rate (°/100usft)	Turn Rate (°/100usft)
4,900.0	15.26	105.52	4,779.4	-253.1	911.4	-135.9	0.00	0.00	0.00
5,000.0	15.26	105.52	4,875.8	-260.1	936.8	-139.6	0.00	0.00	0.00
5,054.9	15.26	105.52	4,928.8	-264.0	950.7	-141.7	0.00	0.00	0.00
Start Drop -1.50									
5,100.0	14.58	105.52	4,972.4	-267.1	961.9	-143.4	1.50	-1.50	0.00
5,200.0	13.08	105.52	5,069.5	-273.5	984.9	-146.8	1.50	-1.50	0.00
5,300.0	11.58	105.52	5,167.2	-279.2	1,005.5	-149.9	1.50	-1.50	0.00
5,400.0	10.08	105.52	5,265.4	-284.2	1,023.6	-152.6	1.50	-1.50	0.00
5,500.0	8.58	105.52	5,364.0	-288.6	1,039.2	-154.9	1.50	-1.50	0.00
5,600.0	7.08	105.52	5,463.1	-292.2	1,052.3	-156.9	1.50	-1.50	0.00
5,700.0	5.58	105.52	5,562.5	-295.2	1,063.0	-158.5	1.50	-1.50	0.00
5,800.0	4.08	105.52	5,662.1	-297.4	1,071.1	-159.7	1.50	-1.50	0.00
5,900.0	2.58	105.52	5,762.0	-299.0	1,076.7	-160.5	1.50	-1.50	0.00
6,000.0	1.08	105.52	5,861.9	-299.8	1,079.8	-161.0	1.50	-1.50	0.00
6,072.1	0.00	0.00	5,934.0	-300.0	1,080.4	-161.1	1.50	-1.50	-146.37
Start Build 10.00									
6,100.0	2.79	0.00	5,961.9	-299.3	1,080.4	-160.4	10.00	10.00	0.00
6,200.0	12.79	0.00	6,060.9	-285.8	1,080.4	-147.0	10.00	10.00	0.00
6,300.0	22.79	0.00	6,155.9	-255.3	1,080.4	-116.7	10.00	10.00	0.00
6,400.0	32.79	0.00	6,244.3	-208.7	1,080.4	-70.5	10.00	10.00	0.00
6,500.0	42.79	0.00	6,323.2	-147.5	1,080.4	-9.8	10.00	10.00	0.00
6,600.0	52.79	0.00	6,390.3	-73.5	1,080.4	63.6	10.00	10.00	0.00
6,700.0	62.79	0.00	6,443.6	11.0	1,080.4	147.4	10.00	10.00	0.00
6,800.0	72.79	0.00	6,481.3	103.4	1,080.4	239.1	10.00	10.00	0.00
6,900.0	82.79	0.00	6,502.4	201.1	1,080.4	336.0	10.00	10.00	0.00
6,972.1	90.00	0.00	6,507.0	273.0	1,080.4	407.3	10.00	10.00	0.00
Start DLS 0.01 TFO 180.00									
7,000.0	90.00	0.00	6,507.0	300.9	1,080.4	435.0	0.00	0.00	0.00
7,100.0	89.99	0.00	6,507.0	400.9	1,080.4	534.2	0.01	-0.01	0.00
7,160.4	89.98	0.00	6,507.0	461.3	1,080.4	594.1	0.01	-0.01	0.00
Start DLS 0.01 TFO 88.16									
7,200.0	89.98	0.01	6,507.0	500.9	1,080.4	633.4	0.01	0.00	0.01
7,300.0	89.98	0.02	6,507.0	600.9	1,080.4	732.6	0.01	0.00	0.01
7,400.0	89.98	0.03	6,507.1	700.9	1,080.5	831.8	0.01	0.00	0.01
7,500.0	89.98	0.05	6,507.1	800.9	1,080.6	931.0	0.01	0.00	0.01
7,600.0	89.98	0.06	6,507.1	900.9	1,080.6	1,030.2	0.01	0.00	0.01
7,700.0	89.98	0.07	6,507.1	1,000.9	1,080.8	1,129.4	0.01	0.00	0.01
7,800.0	89.98	0.09	6,507.2	1,100.9	1,080.9	1,228.6	0.01	0.00	0.01
7,900.0	89.98	0.10	6,507.2	1,200.9	1,081.1	1,327.9	0.01	0.00	0.01
8,000.0	89.99	0.11	6,507.2	1,300.9	1,081.2	1,427.1	0.01	0.00	0.01
8,100.0	89.99	0.13	6,507.3	1,400.9	1,081.4	1,526.3	0.01	0.00	0.01
8,200.0	89.99	0.14	6,507.3	1,500.9	1,081.7	1,625.5	0.01	0.00	0.01
8,300.0	89.99	0.15	6,507.3	1,600.9	1,081.9	1,724.8	0.01	0.00	0.01

Survey Report

Company:	Bison Oil & Gas II, LLC	Local Co-ordinate Reference:	Well ROSS 8-60 18-7-6
Project:	WELD COUNTY, COLORADO (NAD 83)	TVD Reference:	WELL @ 4953.0usft (Original Well Elev)
Site:	ROSS 8-60 18 SESW & SWSE SEC 18 T8N R60W 6th P.M.	MD Reference:	WELL @ 4953.0usft (Original Well Elev)
Well:	ROSS 8-60 18-7-6	North Reference:	True
Wellbore:	Wellbore #1	Survey Calculation Method:	Minimum Curvature
Design:	Design #1	Database:	EDM 5000.16 Single User Db

Planned Survey									
Measured Depth (usft)	Inclination (°)	Azimuth (°)	Vertical Depth (usft)	+N/-S (usft)	+E/-W (usft)	Vertical Section (usft)	Dogleg Rate (°/100usft)	Build Rate (°/100usft)	Turn Rate (°/100usft)
8,400.0	89.99	0.17	6,507.3	1,700.9	1,082.2	1,824.0	0.01	0.00	0.01
8,500.0	89.99	0.18	6,507.4	1,800.9	1,082.5	1,923.2	0.01	0.00	0.01
8,600.0	89.99	0.19	6,507.4	1,900.9	1,082.8	2,022.5	0.01	0.00	0.01
8,700.0	89.99	0.21	6,507.4	2,000.9	1,083.2	2,121.7	0.01	0.00	0.01
8,800.0	89.99	0.22	6,507.4	2,100.9	1,083.6	2,220.9	0.01	0.00	0.01
8,900.0	89.99	0.23	6,507.4	2,200.9	1,084.0	2,320.2	0.01	0.00	0.01
9,000.0	89.99	0.25	6,507.5	2,300.9	1,084.4	2,419.4	0.01	0.00	0.01
9,100.0	89.99	0.26	6,507.5	2,400.9	1,084.8	2,518.7	0.01	0.00	0.01
9,200.0	89.99	0.27	6,507.5	2,500.9	1,085.3	2,618.0	0.01	0.00	0.01
9,300.0	89.99	0.29	6,507.5	2,600.9	1,085.8	2,717.2	0.01	0.00	0.01
9,400.0	89.99	0.30	6,507.5	2,700.9	1,086.3	2,816.5	0.01	0.00	0.01
9,500.0	89.99	0.31	6,507.5	2,800.9	1,086.8	2,915.7	0.01	0.00	0.01
9,600.0	89.99	0.33	6,507.5	2,900.8	1,087.4	3,015.0	0.01	0.00	0.01
9,700.0	89.99	0.34	6,507.6	3,000.8	1,088.0	3,114.3	0.01	0.00	0.01
9,800.0	89.99	0.35	6,507.6	3,100.8	1,088.6	3,213.6	0.01	0.00	0.01
9,900.0	89.99	0.37	6,507.6	3,200.8	1,089.2	3,312.8	0.01	0.00	0.01
10,000.0	89.99	0.38	6,507.6	3,300.8	1,089.8	3,412.1	0.01	0.00	0.01
10,100.0	89.99	0.39	6,507.6	3,400.8	1,090.5	3,511.4	0.01	0.00	0.01
10,200.0	89.99	0.41	6,507.6	3,500.8	1,091.2	3,610.7	0.01	0.00	0.01
10,300.0	90.00	0.42	6,507.6	3,600.8	1,091.9	3,710.0	0.01	0.00	0.01
10,400.0	90.00	0.43	6,507.6	3,700.8	1,092.7	3,809.2	0.01	0.00	0.01
10,500.0	90.00	0.45	6,507.6	3,800.8	1,093.5	3,908.5	0.01	0.00	0.01
10,600.0	90.00	0.46	6,507.7	3,900.8	1,094.3	4,007.8	0.01	0.00	0.01
10,700.0	90.00	0.47	6,507.7	4,000.8	1,095.1	4,107.1	0.01	0.00	0.01
10,800.0	90.00	0.49	6,507.7	4,100.8	1,095.9	4,206.4	0.01	0.00	0.01
10,900.0	90.00	0.50	6,507.7	4,200.8	1,096.8	4,305.7	0.01	0.00	0.01
11,000.0	90.00	0.51	6,507.7	4,300.8	1,097.7	4,405.0	0.01	0.00	0.01
11,100.0	90.00	0.53	6,507.7	4,400.8	1,098.6	4,504.4	0.01	0.00	0.01
11,200.0	90.00	0.54	6,507.7	4,500.8	1,099.5	4,603.7	0.01	0.00	0.01
11,300.0	90.00	0.55	6,507.7	4,600.8	1,100.5	4,703.0	0.01	0.00	0.01
11,400.0	90.00	0.57	6,507.7	4,700.8	1,101.4	4,802.3	0.01	0.00	0.01
11,500.0	90.00	0.58	6,507.7	4,800.8	1,102.4	4,901.6	0.01	0.00	0.01
11,600.0	90.00	0.60	6,507.7	4,900.8	1,103.5	5,000.9	0.01	0.00	0.01
11,700.0	90.00	0.61	6,507.7	5,000.8	1,104.5	5,100.3	0.01	0.00	0.01
11,800.0	90.00	0.62	6,507.7	5,100.8	1,105.6	5,199.6	0.01	0.00	0.01
11,900.0	90.00	0.64	6,507.7	5,200.8	1,106.7	5,298.9	0.01	0.00	0.01
12,000.0	90.00	0.65	6,507.7	5,300.8	1,107.8	5,398.3	0.01	0.00	0.01
12,100.0	90.00	0.66	6,507.7	5,400.7	1,109.0	5,497.6	0.01	0.00	0.01
12,200.0	90.00	0.68	6,507.7	5,500.7	1,110.1	5,596.9	0.01	0.00	0.01
12,300.0	90.00	0.69	6,507.6	5,600.7	1,111.3	5,696.3	0.01	0.00	0.01
12,400.0	90.00	0.70	6,507.6	5,700.7	1,112.5	5,795.6	0.01	0.00	0.01
12,500.0	90.00	0.72	6,507.6	5,800.7	1,113.8	5,895.0	0.01	0.00	0.01

Survey Report

Company:	Bison Oil & Gas II, LLC	Local Co-ordinate Reference:	Well ROSS 8-60 18-7-6
Project:	WELD COUNTY, COLORADO (NAD 83)	TVD Reference:	WELL @ 4953.0usft (Original Well Elev)
Site:	ROSS 8-60 18 SESW & SWSE SEC 18 T8N R60W 6th P.M.	MD Reference:	WELL @ 4953.0usft (Original Well Elev)
Well:	ROSS 8-60 18-7-6	North Reference:	True
Wellbore:	Wellbore #1	Survey Calculation Method:	Minimum Curvature
Design:	Design #1	Database:	EDM 5000.16 Single User Db

Planned Survey									
Measured Depth (usft)	Inclination (°)	Azimuth (°)	Vertical Depth (usft)	+N/-S (usft)	+E/-W (usft)	Vertical Section (usft)	Dogleg Rate (°/100usft)	Build Rate (°/100usft)	Turn Rate (°/100usft)
12,600.0	90.00	0.73	6,507.6	5,900.7	1,115.0	5,994.3	0.01	0.00	0.01
12,700.0	90.01	0.74	6,507.6	6,000.7	1,116.3	6,093.7	0.01	0.00	0.01
12,800.0	90.01	0.76	6,507.6	6,100.7	1,117.6	6,193.0	0.01	0.00	0.01
12,900.0	90.01	0.77	6,507.6	6,200.7	1,119.0	6,292.4	0.01	0.00	0.01
13,000.0	90.01	0.78	6,507.6	6,300.7	1,120.3	6,391.7	0.01	0.00	0.01
13,100.0	90.01	0.80	6,507.6	6,400.7	1,121.7	6,491.1	0.01	0.00	0.01
13,200.0	90.01	0.81	6,507.6	6,500.7	1,123.1	6,590.5	0.01	0.00	0.01
13,300.0	90.01	0.82	6,507.5	6,600.6	1,124.5	6,689.8	0.01	0.00	0.01
13,400.0	90.01	0.84	6,507.5	6,700.6	1,126.0	6,789.2	0.01	0.00	0.01
13,500.0	90.01	0.85	6,507.5	6,800.6	1,127.4	6,888.6	0.01	0.00	0.01
13,600.0	90.01	0.86	6,507.5	6,900.6	1,128.9	6,988.0	0.01	0.00	0.01
13,700.0	90.01	0.88	6,507.5	7,000.6	1,130.4	7,087.3	0.01	0.00	0.01
13,800.0	90.01	0.89	6,507.5	7,100.6	1,132.0	7,186.7	0.01	0.00	0.01
13,900.0	90.01	0.90	6,507.5	7,200.6	1,133.5	7,286.1	0.01	0.00	0.01
14,000.0	90.01	0.92	6,507.4	7,300.6	1,135.1	7,385.5	0.01	0.00	0.01
14,100.0	90.01	0.93	6,507.4	7,400.5	1,136.7	7,484.9	0.01	0.00	0.01
14,200.0	90.01	0.94	6,507.4	7,500.5	1,138.4	7,584.3	0.01	0.00	0.01
14,300.0	90.01	0.96	6,507.4	7,600.5	1,140.0	7,683.7	0.01	0.00	0.01
14,400.0	90.01	0.97	6,507.3	7,700.5	1,141.7	7,783.1	0.01	0.00	0.01
14,500.0	90.01	0.98	6,507.3	7,800.5	1,143.4	7,882.5	0.01	0.00	0.01
14,600.0	90.01	1.00	6,507.3	7,900.5	1,145.2	7,981.9	0.01	0.00	0.01
14,700.0	90.01	1.01	6,507.3	8,000.5	1,146.9	8,081.3	0.01	0.00	0.01
14,800.0	90.01	1.02	6,507.3	8,100.4	1,148.7	8,180.7	0.01	0.00	0.01
14,900.0	90.01	1.04	6,507.2	8,200.4	1,150.5	8,280.1	0.01	0.00	0.01
15,000.0	90.02	1.05	6,507.2	8,300.4	1,152.3	8,379.5	0.01	0.00	0.01
15,100.0	90.02	1.06	6,507.2	8,400.4	1,154.2	8,478.9	0.01	0.00	0.01
15,200.0	90.02	1.08	6,507.1	8,500.4	1,156.0	8,578.3	0.01	0.00	0.01
15,300.0	90.02	1.09	6,507.1	8,600.4	1,157.9	8,677.7	0.01	0.00	0.01
15,400.0	90.02	1.10	6,507.1	8,700.3	1,159.8	8,777.2	0.01	0.00	0.01
15,500.0	90.02	1.12	6,507.1	8,800.3	1,161.8	8,876.6	0.01	0.00	0.01
15,600.0	90.02	1.13	6,507.0	8,900.3	1,163.7	8,976.0	0.01	0.00	0.01
15,700.0	90.02	1.14	6,507.0	9,000.3	1,165.7	9,075.4	0.01	0.00	0.01
15,728.9	90.02	1.14	6,507.0	9,029.2	1,166.3	9,104.2	0.00	0.00	0.00
Start 149.5 hold at 15728.9 MD									
15,800.0	90.02	1.15	6,507.0	9,100.3	1,167.7	9,174.9	0.01	0.00	0.01
15,878.3	90.02	1.15	6,506.9	9,178.6	1,169.3	9,252.8	0.00	0.00	0.00
TD at 15878.3									

Survey Report

Company:	Bison Oil & Gas II, LLC	Local Co-ordinate Reference:	Well ROSS 8-60 18-7-6
Project:	WELD COUNTY, COLORADO (NAD 83)	TVD Reference:	WELL @ 4953.0usft (Original Well Elev)
Site:	ROSS 8-60 18 SESW & SWSE SEC 18 T8N R60W 6th P.M.	MD Reference:	WELL @ 4953.0usft (Original Well Elev)
Well:	ROSS 8-60 18-7-6	North Reference:	True
Wellbore:	Wellbore #1	Survey Calculation Method:	Minimum Curvature
Design:	Design #1	Database:	EDM 5000.16 Single User Db

Design Targets

Target Name

- hit/miss target - Shape	Dip Angle (°)	Dip Dir. (°)	TVD (usft)	+N/-S (usft)	+E/-W (usft)	Northing (usft)	Easting (usft)	Latitude	Longitude
ROSS 8-60 18-7-6 BH - plan misses target center by 2.5usft at 15878.3usft MD (6506.9 TVD, 9178.6 N, 1169.3 E) - Point	0.00	0.88	6,507.0	9,178.9	1,166.8	1,494,113.52	3,379,837.43	40° 40' 54.059 N	104° 7' 49.573 W
ROSS 8-60 18-7-6 EF - plan hits target center - Point	0.00	0.89	6,507.0	9,029.2	1,166.3	1,493,963.79	3,379,839.19	40° 40' 52.579 N	104° 7' 49.580 W
ROSS 8-60 18-7-6 BF - plan hits target center - Point	0.00	0.88	6,507.0	461.3	1,080.4	1,485,395.71	3,379,885.24	40° 39' 27.918 N	104° 7' 50.700 W

Plan Annotations

Measured Depth (usft)	Vertical Depth (usft)	Local Coordinates		Comment
		+N/-S (usft)	+E/-W (usft)	
800	800	0	0	Start Build 1.50
1817	1805	-36	130	Start 3237.8 hold at 1817.1 MD
5055	4929	-264	951	Start Drop -1.50
6072	5934	-300	1080	Start Build 10.00
6972	6507	273	1080	Start DLS 0.01 TFO 180.00
7160	6507	461	1080	Start DLS 0.01 TFO 88.16
15,729	6507	9029	1166	Start 149.5 hold at 15728.9 MD
15,878	6507	9179	1169	TD at 15878.4