

# **Bison Oil & Gas II, LLC**

**WELD COUNTY, COLORADO (NAD 83)**

**ROSS 8-60 18 SESW & SWSE SEC 18 T8N R60W 6th P.M.**

**ROSS 8-60 18-7-2**

**Wellbore #1**

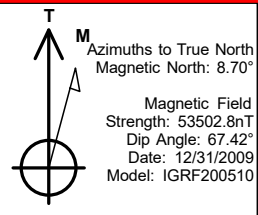
**Plan: Design #1**

## **Standard Survey Report**

**12 April, 2021**



Project: WELD COUNTY, COLORADO (NAD 83)  
Site: ROSS 8-60 18 SESW & SWSE SEC 18 T8N R60W 6th P.M  
Well: ROSS 8-60 18-7-2  
Wellbore: Wellbore #1  
Design: Design #1



#### ANNOTATIONS

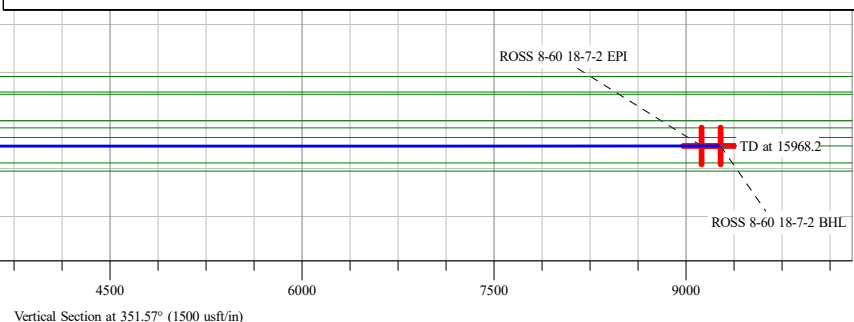
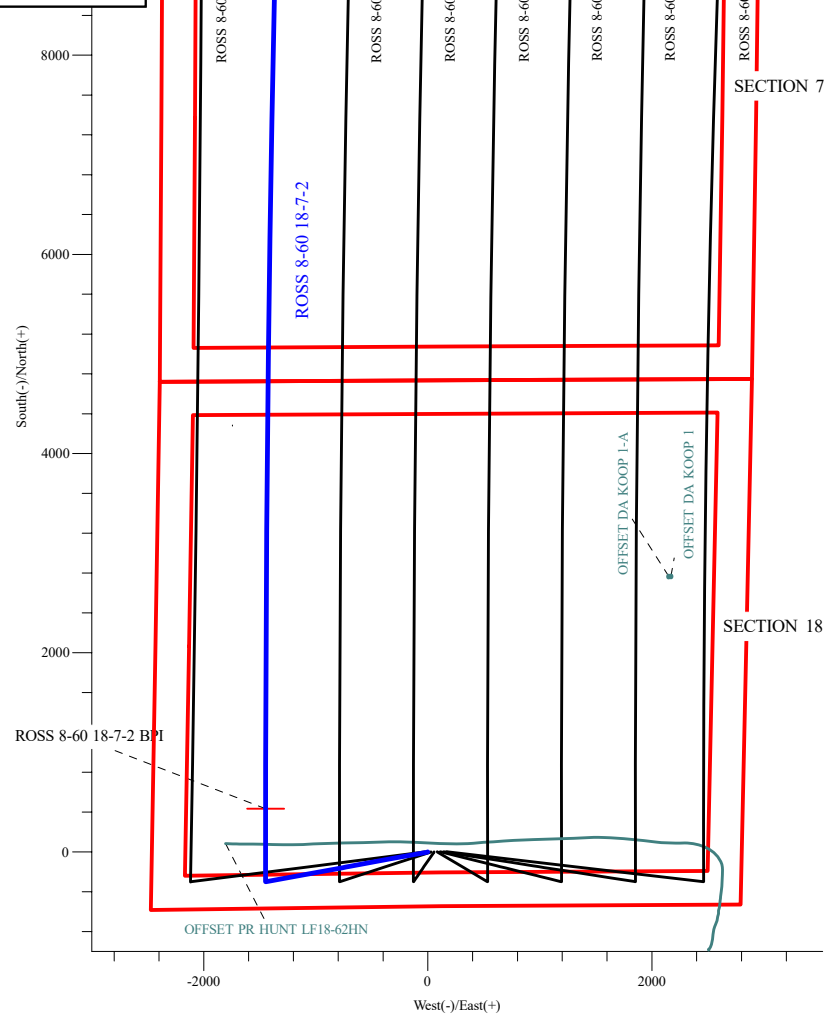
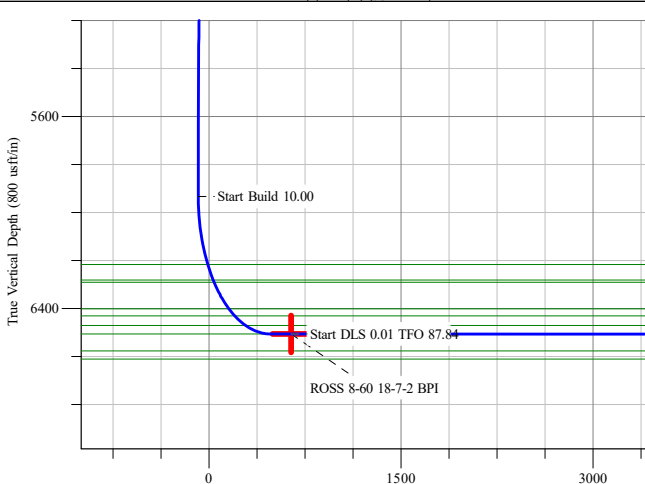
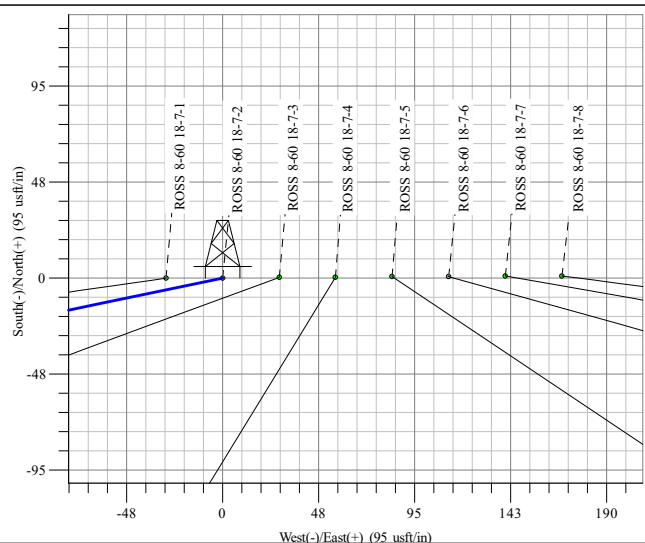
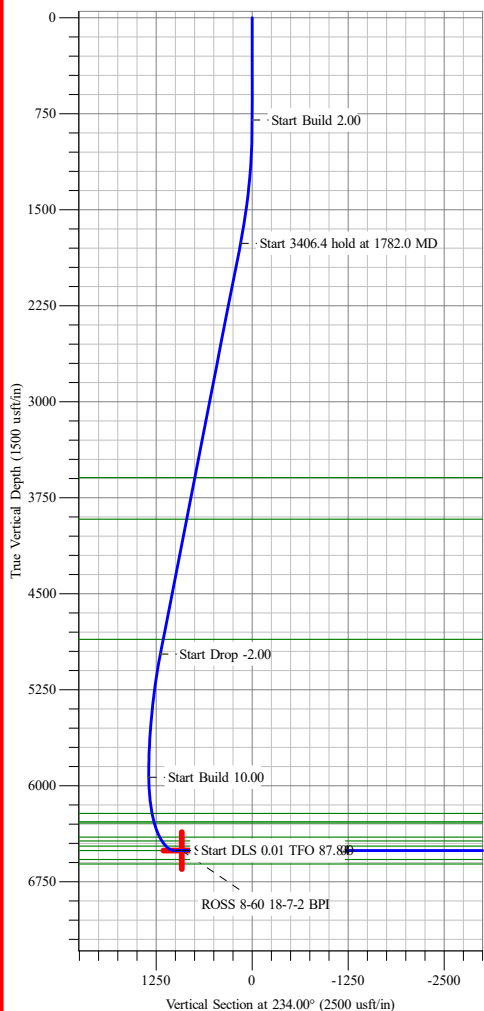
MD	Inc	Azi	TVD	+N/-S	+E/-W	VSec	Departure	Annotation
800.0	0.00	0.00	800.0	0.0	0.0	0.0	0.0	Start Build 2.00
1782.0	19.64	258.29	1762.9	-33.8	-163.2	-9.5	166.7	Start 3406.4 hold at 1782.0 MD
5188.4	19.64	258.29	4971.1	-266.2	-1284.3	-75.1	1311.6	Start Drop -2.00
6170.4	0.00	0.00	5934.0	-300.0	-1447.5	-84.7	1478.3	Start Build 10.00
7070.4	90.00	360.00	6507.0	273.0	-1447.5	482.1	2051.2	Start DLS 0.01 TFO -180.00
7230.3	89.98	360.00	6507.0	432.9	-1447.5	640.3	2211.1	Start DLS 0.01 TFO 87.84
15817.8	90.02	1.15	6507.0	9019.7	-1361.3	9121.8	10798.6	Start 150.5 hold at 15817.8 MD
15968.2	90.02	1.15	6506.9	9170.2	-1358.3	9270.2	10949.0	TD at 15968.2

#### PROPOSED LOCAL COORDINATES:

SHL: 546 ft FSL & 2464 ft FWL Sec 18  
BPI: 1000 ft FSL & 1010 ft FWL Sec 18  
EPI: 1000 ft FNL & 1010 ft FWL Sec 7  
BHL: 850 ft FNL & 1010 ft FWL Sec 7

#### WELLBORE TARGET DETAILS (LAT/LONG)

Name	TVD	+N/-S	+E/-W	Northing	Easting	Latitude	Longitude
ROSS 8-60 18-7-2 BHL	6507.0	9169.8	-1360.4	1494063.07	3377198.89	40° 40' 53.962 N 104° 8' 23.827 W	
ROSS 8-60 18-7-2 BPI	6507.0	432.9	-1447.5	1485325.95	3377246.33	40° 39' 27.630 N 104° 8' 24.950 W	
ROSS 8-60 18-7-2 EPI	6507.0	9019.7	-1361.3	1493912.97	3377200.36	40° 40' 52.478 N 104° 8' 23.838 W	Point



## Survey Report

<b>Company:</b>	Bison Oil & Gas II, LLC	<b>Local Co-ordinate Reference:</b>	Well ROSS 8-60 18-7-2
<b>Project:</b>	WELD COUNTY, COLORADO (NAD 83)	<b>TVD Reference:</b>	WELL @ 4953.0usft (Original Well Elev)
<b>Site:</b>	ROSS 8-60 18 SESW & SWSE SEC 18 T8N R60W 6th P.M.	<b>MD Reference:</b>	WELL @ 4953.0usft (Original Well Elev)
<b>Well:</b>	ROSS 8-60 18-7-2	<b>North Reference:</b>	True
<b>Wellbore:</b>	Wellbore #1	<b>Survey Calculation Method:</b>	Minimum Curvature
<b>Design:</b>	Design #1	<b>Database:</b>	EDM 5000.16 Single User Db

<b>Project</b>	WELD COUNTY, COLORADO (NAD 83),		
<b>Map System:</b>	US State Plane 1983	<b>System Datum:</b>	Mean Sea Level
<b>Geo Datum:</b>	North American Datum 1983		
<b>Map Zone:</b>	Colorado Northern Zone		Using geodetic scale factor

<b>Site</b>	ROSS 8-60 18 SESW & SWSE SEC 18 T8N R60W 6th P.M.		
<b>Site Position:</b>		<b>Northing:</b>	1,484,919.11 usft
<b>From:</b>	Lat/Long	<b>Easting:</b>	3,378,868.10 usft
<b>Position Uncertainty:</b>	0.0 usft	<b>Slot Radius:</b>	13-3/16 "
		<b>Latitude:</b>	40° 39' 23.364 N
		<b>Longitude:</b>	104° 8' 3.991 W

<b>Well</b>	ROSS 8-60 18-7-2		
<b>Well Position</b>	<b>+N/-S</b>	0.0 usft	<b>Northing:</b> 1,484,915.42 usft
	<b>+E/-W</b>	0.0 usft	<b>Easting:</b> 3,378,700.28 usft
<b>Position Uncertainty</b>	0.0 usft	<b>Wellhead Elevation:</b>	usft
<b>Grid Convergence:</b>	0.88 °	<b>Ground Level:</b>	4,949.7 usft

<b>Wellbore</b>	Wellbore #1				
<b>Magnetics</b>	<b>Model Name</b>	<b>Sample Date</b>	<b>Declination (°)</b>	<b>Dip Angle (°)</b>	<b>Field Strength (nT)</b>
	IGRF200510	12/31/2009	8.70	67.42	53,502.76464891

<b>Design</b>	Design #1			
<b>Audit Notes:</b>				
<b>Version:</b>	<b>Phase:</b>	PROTOTYPE	<b>Tie On Depth:</b>	0.0
<b>Vertical Section:</b>	<b>Depth From (TVD) (usft)</b>	<b>+N/-S (usft)</b>	<b>+E/-W (usft)</b>	<b>Direction (°)</b>
	0.0	0.0	0.0	351.57

<b>Survey Tool Program</b>	<b>Date</b> 4/12/2021			
<b>From (usft)</b>	<b>To (usft)</b>	<b>Survey (Wellbore)</b>	<b>Tool Name</b>	<b>Description</b>
0.0	15,968.2	Design #1 (Wellbore #1)	MWD	Fixed:v2:standard declination

<b>Planned Survey</b>									
<b>Measured Depth (usft)</b>	<b>Inclination (°)</b>	<b>Azimuth (°)</b>	<b>Vertical Depth (usft)</b>	<b>+N/-S (usft)</b>	<b>+E/-W (usft)</b>	<b>Vertical Section (usft)</b>	<b>Dogleg Rate (°/100usft)</b>	<b>Build Rate (°/100usft)</b>	<b>Turn Rate (°/100usft)</b>
0.0	0.00	0.00	0.0	0.0	0.0	0.0	0.00	0.00	0.00
100.0	0.00	0.00	100.0	0.0	0.0	0.0	0.00	0.00	0.00
200.0	0.00	0.00	200.0	0.0	0.0	0.0	0.00	0.00	0.00
300.0	0.00	0.00	300.0	0.0	0.0	0.0	0.00	0.00	0.00
400.0	0.00	0.00	400.0	0.0	0.0	0.0	0.00	0.00	0.00
500.0	0.00	0.00	500.0	0.0	0.0	0.0	0.00	0.00	0.00
600.0	0.00	0.00	600.0	0.0	0.0	0.0	0.00	0.00	0.00
700.0	0.00	0.00	700.0	0.0	0.0	0.0	0.00	0.00	0.00
800.0	0.00	0.00	800.0	0.0	0.0	0.0	0.00	0.00	0.00

## Survey Report

<b>Company:</b>	Bison Oil & Gas II, LLC	<b>Local Co-ordinate Reference:</b>	Well ROSS 8-60 18-7-2
<b>Project:</b>	WELD COUNTY, COLORADO (NAD 83)	<b>TVD Reference:</b>	WELL @ 4953.0usft (Original Well Elev)
<b>Site:</b>	ROSS 8-60 18 SESW & SWSE SEC 18 T8N R60W 6th P.M.	<b>MD Reference:</b>	WELL @ 4953.0usft (Original Well Elev)
<b>Well:</b>	ROSS 8-60 18-7-2	<b>North Reference:</b>	True
<b>Wellbore:</b>	Wellbore #1	<b>Survey Calculation Method:</b>	Minimum Curvature
<b>Design:</b>	Design #1	<b>Database:</b>	EDM 5000.16 Single User Db

Planned Survey									
Measured Depth (usft)	Inclination (°)	Azimuth (°)	Vertical Depth (usft)	+N/-S (usft)	+E/-W (usft)	Vertical Section (usft)	Dogleg Rate (°/100usft)	Build Rate (°/100usft)	Turn Rate (°/100usft)
<b>Start Build 2.00</b>									
900.0	2.00	258.29	900.0	-0.4	-1.7	-0.1	2.00	2.00	0.00
1,000.0	4.00	258.29	999.8	-1.4	-6.8	-0.4	2.00	2.00	0.00
1,100.0	6.00	258.29	1,099.4	-3.2	-15.4	-0.9	2.00	2.00	0.00
1,200.0	8.00	258.29	1,198.7	-5.7	-27.3	-1.6	2.00	2.00	0.00
1,300.0	10.00	258.29	1,297.5	-8.8	-42.6	-2.5	2.00	2.00	0.00
1,400.0	12.00	258.29	1,395.6	-12.7	-61.3	-3.6	2.00	2.00	0.00
1,500.0	14.00	258.29	1,493.1	-17.3	-83.3	-4.9	2.00	2.00	0.00
1,600.0	16.00	258.29	1,589.6	-22.5	-108.7	-6.4	2.00	2.00	0.00
1,700.0	18.00	258.29	1,685.3	-28.5	-137.3	-8.0	2.00	2.00	0.00
1,782.0	19.64	258.29	1,762.9	-33.8	-163.2	-9.5	2.00	2.00	0.00
<b>Start 3406.4 hold at 1782.0 MD</b>									
1,800.0	19.64	258.29	1,779.8	-35.1	-169.1	-9.9	0.00	0.00	0.00
1,900.0	19.64	258.29	1,874.0	-41.9	-202.0	-11.8	0.00	0.00	0.00
2,000.0	19.64	258.29	1,968.2	-48.7	-234.9	-13.7	0.00	0.00	0.00
2,100.0	19.64	258.29	2,062.4	-55.5	-267.9	-15.7	0.00	0.00	0.00
2,200.0	19.64	258.29	2,156.6	-62.3	-300.8	-17.6	0.00	0.00	0.00
2,300.0	19.64	258.29	2,250.7	-69.2	-333.7	-19.5	0.00	0.00	0.00
2,400.0	19.64	258.29	2,344.9	-76.0	-366.6	-21.4	0.00	0.00	0.00
2,500.0	19.64	258.29	2,439.1	-82.8	-399.5	-23.4	0.00	0.00	0.00
2,600.0	19.64	258.29	2,533.3	-89.6	-432.4	-25.3	0.00	0.00	0.00
2,700.0	19.64	258.29	2,627.5	-96.4	-465.3	-27.2	0.00	0.00	0.00
2,800.0	19.64	258.29	2,721.7	-103.3	-498.2	-29.1	0.00	0.00	0.00
2,900.0	19.64	258.29	2,815.8	-110.1	-531.1	-31.1	0.00	0.00	0.00
3,000.0	19.64	258.29	2,910.0	-116.9	-564.1	-33.0	0.00	0.00	0.00
3,100.0	19.64	258.29	3,004.2	-123.7	-597.0	-34.9	0.00	0.00	0.00
3,200.0	19.64	258.29	3,098.4	-130.5	-629.9	-36.8	0.00	0.00	0.00
3,300.0	19.64	258.29	3,192.6	-137.4	-662.8	-38.8	0.00	0.00	0.00
3,400.0	19.64	258.29	3,286.7	-144.2	-695.7	-40.7	0.00	0.00	0.00
3,500.0	19.64	258.29	3,380.9	-151.0	-728.6	-42.6	0.00	0.00	0.00
3,600.0	19.64	258.29	3,475.1	-157.8	-761.5	-44.5	0.00	0.00	0.00
3,700.0	19.64	258.29	3,569.3	-164.7	-794.4	-46.5	0.00	0.00	0.00
3,800.0	19.64	258.29	3,663.5	-171.5	-827.3	-48.4	0.00	0.00	0.00
3,900.0	19.64	258.29	3,757.7	-178.3	-860.3	-50.3	0.00	0.00	0.00
4,000.0	19.64	258.29	3,851.8	-185.1	-893.2	-52.2	0.00	0.00	0.00
4,100.0	19.64	258.29	3,946.0	-191.9	-926.1	-54.2	0.00	0.00	0.00
4,200.0	19.64	258.29	4,040.2	-198.8	-959.0	-56.1	0.00	0.00	0.00
4,300.0	19.64	258.29	4,134.4	-205.6	-991.9	-58.0	0.00	0.00	0.00
4,400.0	19.64	258.29	4,228.6	-212.4	-1,024.8	-60.0	0.00	0.00	0.00
4,500.0	19.64	258.29	4,322.7	-219.2	-1,057.7	-61.9	0.00	0.00	0.00
4,600.0	19.64	258.29	4,416.9	-226.0	-1,090.6	-63.8	0.00	0.00	0.00
4,700.0	19.64	258.29	4,511.1	-232.9	-1,123.5	-65.7	0.00	0.00	0.00
4,800.0	19.64	258.29	4,605.3	-239.7	-1,156.5	-67.7	0.00	0.00	0.00

## Survey Report

<b>Company:</b>	Bison Oil & Gas II, LLC	<b>Local Co-ordinate Reference:</b>	Well ROSS 8-60 18-7-2
<b>Project:</b>	WELD COUNTY, COLORADO (NAD 83)	<b>TVD Reference:</b>	WELL @ 4953.0usft (Original Well Elev)
<b>Site:</b>	ROSS 8-60 18 SESW & SWSE SEC 18 T8N R60W 6th P.M.	<b>MD Reference:</b>	WELL @ 4953.0usft (Original Well Elev)
<b>Well:</b>	ROSS 8-60 18-7-2	<b>North Reference:</b>	True
<b>Wellbore:</b>	Wellbore #1	<b>Survey Calculation Method:</b>	Minimum Curvature
<b>Design:</b>	Design #1	<b>Database:</b>	EDM 5000.16 Single User Db

### Planned Survey

Measured Depth (usft)	Inclination (°)	Azimuth (°)	Vertical Depth (usft)	+N/-S (usft)	+E/-W (usft)	Vertical Section (usft)	Dogleg Rate (°/100usft)	Build Rate (°/100usft)	Turn Rate (°/100usft)
4,900.0	19.64	258.29	4,699.5	-246.5	-1,189.4	-69.6	0.00	0.00	0.00
5,000.0	19.64	258.29	4,793.7	-253.3	-1,222.3	-71.5	0.00	0.00	0.00
5,100.0	19.64	258.29	4,887.8	-260.1	-1,255.2	-73.4	0.00	0.00	0.00
5,188.4	19.64	258.29	4,971.1	-266.2	-1,284.3	-75.1	0.00	0.00	0.00
<b>Start Drop -2.00</b>									
5,200.0	19.41	258.29	4,982.0	-267.0	-1,288.1	-75.4	2.00	-2.00	0.00
5,300.0	17.41	258.29	5,076.9	-273.4	-1,319.0	-77.2	2.00	-2.00	0.00
5,400.0	15.41	258.29	5,172.8	-279.1	-1,346.7	-78.8	2.00	-2.00	0.00
5,500.0	13.41	258.29	5,269.7	-284.2	-1,371.0	-80.2	2.00	-2.00	0.00
5,600.0	11.41	258.29	5,367.3	-288.5	-1,392.1	-81.4	2.00	-2.00	0.00
5,700.0	9.41	258.29	5,465.7	-292.2	-1,409.8	-82.5	2.00	-2.00	0.00
5,800.0	7.41	258.29	5,564.6	-295.1	-1,424.1	-83.3	2.00	-2.00	0.00
5,900.0	5.41	258.29	5,664.0	-297.4	-1,435.0	-83.9	2.00	-2.00	0.00
6,000.0	3.41	258.29	5,763.7	-299.0	-1,442.5	-84.4	2.00	-2.00	0.00
6,100.0	1.41	258.29	5,863.6	-299.8	-1,446.6	-84.6	2.00	-2.00	0.00
6,170.4	0.00	0.00	5,934.0	-300.0	-1,447.5	-84.7	2.00	-2.00	0.00
<b>Start Build 10.00</b>									
6,200.0	2.96	360.00	5,963.6	-299.2	-1,447.5	-83.9	10.00	10.00	0.00
6,300.0	12.96	360.00	6,062.5	-285.4	-1,447.5	-70.2	10.00	10.00	0.00
6,400.0	22.96	360.00	6,157.5	-254.6	-1,447.5	-39.8	10.00	10.00	0.00
6,500.0	32.96	360.00	6,245.7	-207.8	-1,447.5	6.5	10.00	10.00	0.00
6,600.0	42.96	360.00	6,324.4	-146.4	-1,447.5	67.3	10.00	10.00	0.00
6,700.0	52.96	360.00	6,391.3	-72.2	-1,447.5	140.7	10.00	10.00	0.00
6,800.0	62.96	360.00	6,444.3	12.5	-1,447.5	224.4	10.00	10.00	0.00
6,900.0	72.96	360.00	6,481.8	105.0	-1,447.5	316.0	10.00	10.00	0.00
7,000.0	82.96	360.00	6,502.6	202.7	-1,447.5	412.6	10.00	10.00	0.00
7,070.4	90.00	360.00	6,507.0	273.0	-1,447.5	482.1	10.00	10.00	0.00
<b>Start DLS 0.01 TFO -180.00</b>									
7,100.0	90.00	360.00	6,507.0	302.5	-1,447.5	511.4	0.00	0.00	0.00
7,200.0	89.98	360.00	6,507.0	402.5	-1,447.5	610.3	0.02	-0.02	0.00
7,230.3	89.98	360.00	6,507.0	432.9	-1,447.5	640.3	0.00	0.00	0.00
<b>Start DLS 0.01 TFO 87.84</b>									
7,300.0	89.98	0.01	6,507.0	502.5	-1,447.5	709.2	0.01	-0.01	0.01
7,400.0	89.98	0.02	6,507.0	602.5	-1,447.5	808.1	0.01	0.00	0.01
7,500.0	89.98	0.04	6,507.1	702.5	-1,447.4	907.0	0.01	0.00	0.01
7,600.0	89.98	0.05	6,507.1	802.5	-1,447.3	1,005.9	0.01	0.00	0.01
7,700.0	89.98	0.06	6,507.2	902.5	-1,447.2	1,104.8	0.01	0.00	0.01
7,800.0	89.98	0.08	6,507.2	1,002.5	-1,447.1	1,203.7	0.01	0.00	0.01
7,900.0	89.98	0.09	6,507.2	1,102.5	-1,447.0	1,302.6	0.01	0.00	0.01
8,000.0	89.98	0.10	6,507.3	1,202.5	-1,446.8	1,401.5	0.01	0.00	0.01
8,100.0	89.98	0.12	6,507.3	1,302.5	-1,446.6	1,500.4	0.01	0.00	0.01
8,200.0	89.98	0.13	6,507.3	1,402.5	-1,446.4	1,599.3	0.01	0.00	0.01
8,300.0	89.98	0.14	6,507.3	1,502.5	-1,446.2	1,698.2	0.01	0.00	0.01

## Survey Report

<b>Company:</b>	Bison Oil & Gas II, LLC	<b>Local Co-ordinate Reference:</b>	Well ROSS 8-60 18-7-2
<b>Project:</b>	WELD COUNTY, COLORADO (NAD 83)	<b>TVD Reference:</b>	WELL @ 4953.0usft (Original Well Elev)
<b>Site:</b>	ROSS 8-60 18 SESW & SWSE SEC 18 T8N R60W 6th P.M.	<b>MD Reference:</b>	WELL @ 4953.0usft (Original Well Elev)
<b>Well:</b>	ROSS 8-60 18-7-2	<b>North Reference:</b>	True
<b>Wellbore:</b>	Wellbore #1	<b>Survey Calculation Method:</b>	Minimum Curvature
<b>Design:</b>	Design #1	<b>Database:</b>	EDM 5000.16 Single User Db

### Planned Survey

Measured Depth (usft)	Inclination (°)	Azimuth (°)	Vertical Depth (usft)	+N/-S (usft)	+E/-W (usft)	Vertical Section (usft)	Dogleg Rate (°/100usft)	Build Rate (°/100usft)	Turn Rate (°/100usft)
8,400.0	89.98	0.16	6,507.4	1,602.5	-1,445.9	1,797.1	0.01	0.00	0.01
8,500.0	89.98	0.17	6,507.4	1,702.5	-1,445.6	1,896.0	0.01	0.00	0.01
8,600.0	89.99	0.18	6,507.4	1,802.5	-1,445.3	1,994.8	0.01	0.00	0.01
8,700.0	89.99	0.20	6,507.4	1,902.5	-1,445.0	2,093.7	0.01	0.00	0.01
8,800.0	89.99	0.21	6,507.5	2,002.5	-1,444.6	2,192.6	0.01	0.00	0.01
8,900.0	89.99	0.22	6,507.5	2,102.5	-1,444.2	2,291.4	0.01	0.00	0.01
9,000.0	89.99	0.24	6,507.5	2,202.5	-1,443.8	2,390.3	0.01	0.00	0.01
9,100.0	89.99	0.25	6,507.5	2,302.5	-1,443.4	2,489.2	0.01	0.00	0.01
9,200.0	89.99	0.26	6,507.6	2,402.5	-1,443.0	2,588.0	0.01	0.00	0.01
9,300.0	89.99	0.28	6,507.6	2,502.5	-1,442.5	2,686.9	0.01	0.00	0.01
9,400.0	89.99	0.29	6,507.6	2,602.5	-1,442.0	2,785.7	0.01	0.00	0.01
9,500.0	89.99	0.30	6,507.6	2,702.5	-1,441.5	2,884.6	0.01	0.00	0.01
9,600.0	89.99	0.32	6,507.6	2,802.5	-1,440.9	2,983.4	0.01	0.00	0.01
9,700.0	89.99	0.33	6,507.7	2,902.5	-1,440.4	3,082.2	0.01	0.00	0.01
9,800.0	89.99	0.34	6,507.7	3,002.5	-1,439.8	3,181.1	0.01	0.00	0.01
9,900.0	89.99	0.36	6,507.7	3,102.5	-1,439.2	3,279.9	0.01	0.00	0.01
10,000.0	89.99	0.37	6,507.7	3,202.5	-1,438.5	3,378.7	0.01	0.00	0.01
10,100.0	89.99	0.38	6,507.7	3,302.5	-1,437.9	3,477.5	0.01	0.00	0.01
10,200.0	89.99	0.40	6,507.7	3,402.5	-1,437.2	3,576.4	0.01	0.00	0.01
10,300.0	89.99	0.41	6,507.7	3,502.5	-1,436.5	3,675.2	0.01	0.00	0.01
10,400.0	89.99	0.42	6,507.7	3,602.5	-1,435.7	3,774.0	0.01	0.00	0.01
10,500.0	89.99	0.44	6,507.8	3,702.5	-1,435.0	3,872.8	0.01	0.00	0.01
10,600.0	90.00	0.45	6,507.8	3,802.5	-1,434.2	3,971.6	0.01	0.00	0.01
10,700.0	90.00	0.46	6,507.8	3,902.5	-1,433.4	4,070.4	0.01	0.00	0.01
10,800.0	90.00	0.48	6,507.8	4,002.5	-1,432.6	4,169.2	0.01	0.00	0.01
10,900.0	90.00	0.49	6,507.8	4,102.5	-1,431.7	4,268.0	0.01	0.00	0.01
11,000.0	90.00	0.51	6,507.8	4,202.5	-1,430.9	4,366.8	0.01	0.00	0.01
11,100.0	90.00	0.52	6,507.8	4,302.5	-1,430.0	4,465.6	0.01	0.00	0.01
11,200.0	90.00	0.53	6,507.8	4,402.5	-1,429.1	4,564.3	0.01	0.00	0.01
11,300.0	90.00	0.55	6,507.8	4,502.5	-1,428.1	4,663.1	0.01	0.00	0.01
11,400.0	90.00	0.56	6,507.8	4,602.5	-1,427.2	4,761.9	0.01	0.00	0.01
11,500.0	90.00	0.57	6,507.8	4,702.5	-1,426.2	4,860.7	0.01	0.00	0.01
11,600.0	90.00	0.59	6,507.8	4,802.4	-1,425.2	4,959.4	0.01	0.00	0.01
11,700.0	90.00	0.60	6,507.8	4,902.4	-1,424.1	5,058.2	0.01	0.00	0.01
11,800.0	90.00	0.61	6,507.8	5,002.4	-1,423.1	5,157.0	0.01	0.00	0.01
11,900.0	90.00	0.63	6,507.8	5,102.4	-1,422.0	5,255.7	0.01	0.00	0.01
12,000.0	90.00	0.64	6,507.8	5,202.4	-1,420.9	5,354.5	0.01	0.00	0.01
12,100.0	90.00	0.65	6,507.8	5,302.4	-1,419.8	5,453.2	0.01	0.00	0.01
12,200.0	90.00	0.67	6,507.8	5,402.4	-1,418.6	5,552.0	0.01	0.00	0.01
12,300.0	90.00	0.68	6,507.8	5,502.4	-1,417.4	5,650.7	0.01	0.00	0.01
12,400.0	90.00	0.69	6,507.8	5,602.4	-1,416.2	5,749.4	0.01	0.00	0.01
12,500.0	90.00	0.71	6,507.8	5,702.4	-1,415.0	5,848.2	0.01	0.00	0.01

## Survey Report

<b>Company:</b>	Bison Oil & Gas II, LLC	<b>Local Co-ordinate Reference:</b>	Well ROSS 8-60 18-7-2
<b>Project:</b>	WELD COUNTY, COLORADO (NAD 83)	<b>TVD Reference:</b>	WELL @ 4953.0usft (Original Well Elev)
<b>Site:</b>	ROSS 8-60 18 SESW & SWSE SEC 18 T8N R60W 6th P.M.	<b>MD Reference:</b>	WELL @ 4953.0usft (Original Well Elev)
<b>Well:</b>	ROSS 8-60 18-7-2	<b>North Reference:</b>	True
<b>Wellbore:</b>	Wellbore #1	<b>Survey Calculation Method:</b>	Minimum Curvature
<b>Design:</b>	Design #1	<b>Database:</b>	EDM 5000.16 Single User Db

### Planned Survey

Measured Depth (usft)	Inclination (°)	Azimuth (°)	Vertical Depth (usft)	+N/-S (usft)	+E/-W (usft)	Vertical Section (usft)	Dogleg Rate (°/100usft)	Build Rate (°/100usft)	Turn Rate (°/100usft)
12,600.0	90.01	0.72	6,507.8	5,802.4	-1,413.8	5,946.9	0.01	0.00	0.01
12,700.0	90.01	0.73	6,507.7	5,902.4	-1,412.5	6,045.6	0.01	0.00	0.01
12,800.0	90.01	0.75	6,507.7	6,002.4	-1,411.2	6,144.4	0.01	0.00	0.01
12,900.0	90.01	0.76	6,507.7	6,102.4	-1,409.9	6,243.1	0.01	0.00	0.01
13,000.0	90.01	0.77	6,507.7	6,202.3	-1,408.6	6,341.8	0.01	0.00	0.01
13,100.0	90.01	0.79	6,507.7	6,302.3	-1,407.2	6,440.5	0.01	0.00	0.01
13,200.0	90.01	0.80	6,507.7	6,402.3	-1,405.8	6,539.2	0.01	0.00	0.01
13,300.0	90.01	0.81	6,507.7	6,502.3	-1,404.4	6,637.9	0.01	0.00	0.01
13,400.0	90.01	0.83	6,507.6	6,602.3	-1,403.0	6,736.6	0.01	0.00	0.01
13,500.0	90.01	0.84	6,507.6	6,702.3	-1,401.5	6,835.3	0.01	0.00	0.01
13,600.0	90.01	0.85	6,507.6	6,802.3	-1,400.1	6,934.0	0.01	0.00	0.01
13,700.0	90.01	0.87	6,507.6	6,902.3	-1,398.6	7,032.7	0.01	0.00	0.01
13,800.0	90.01	0.88	6,507.6	7,002.3	-1,397.0	7,131.4	0.01	0.00	0.01
13,900.0	90.01	0.89	6,507.6	7,102.2	-1,395.5	7,230.1	0.01	0.00	0.01
14,000.0	90.01	0.91	6,507.5	7,202.2	-1,393.9	7,328.7	0.01	0.00	0.01
14,100.0	90.01	0.92	6,507.5	7,302.2	-1,392.3	7,427.4	0.01	0.00	0.01
14,200.0	90.01	0.93	6,507.5	7,402.2	-1,390.7	7,526.1	0.01	0.00	0.01
14,300.0	90.01	0.95	6,507.5	7,502.2	-1,389.1	7,624.8	0.01	0.00	0.01
14,400.0	90.01	0.96	6,507.4	7,602.2	-1,387.4	7,723.4	0.01	0.00	0.01
14,500.0	90.02	0.97	6,507.4	7,702.2	-1,385.7	7,822.1	0.01	0.00	0.01
14,600.0	90.02	0.99	6,507.4	7,802.2	-1,384.0	7,920.7	0.01	0.00	0.01
14,700.0	90.02	1.00	6,507.4	7,902.1	-1,382.3	8,019.4	0.01	0.00	0.01
14,800.0	90.02	1.01	6,507.3	8,002.1	-1,380.5	8,118.0	0.01	0.00	0.01
14,900.0	90.02	1.03	6,507.3	8,102.1	-1,378.7	8,216.7	0.01	0.00	0.01
15,000.0	90.02	1.04	6,507.3	8,202.1	-1,376.9	8,315.3	0.01	0.00	0.01
15,100.0	90.02	1.05	6,507.2	8,302.1	-1,375.1	8,414.0	0.01	0.00	0.01
15,200.0	90.02	1.07	6,507.2	8,402.1	-1,373.2	8,512.6	0.01	0.00	0.01
15,300.0	90.02	1.08	6,507.2	8,502.0	-1,371.4	8,611.2	0.01	0.00	0.01
15,400.0	90.02	1.09	6,507.1	8,602.0	-1,369.5	8,709.8	0.01	0.00	0.01
15,500.0	90.02	1.11	6,507.1	8,702.0	-1,367.5	8,808.5	0.01	0.00	0.01
15,600.0	90.02	1.12	6,507.1	8,802.0	-1,365.6	8,907.1	0.01	0.00	0.01
15,700.0	90.02	1.13	6,507.0	8,902.0	-1,363.6	9,005.7	0.01	0.00	0.01
15,800.0	90.02	1.15	6,507.0	9,001.9	-1,361.6	9,104.3	0.01	0.00	0.01
15,817.8	90.02	1.15	6,507.0	9,019.7	-1,361.3	9,121.8	0.00	0.00	0.00
<b>Start 150.5 hold at 15817.8 MD</b>									
15,900.0	90.02	1.15	6,507.0	9,101.9	-1,359.6	9,202.9	0.00	0.00	0.00
15,968.2	90.02	1.15	6,506.9	9,170.2	-1,358.3	9,270.2	0.00	0.00	0.00
<b>TD at 15968.2</b>									

## Survey Report

<b>Company:</b>	Bison Oil & Gas II, LLC	<b>Local Co-ordinate Reference:</b>	Well ROSS 8-60 18-7-2
<b>Project:</b>	WELD COUNTY, COLORADO (NAD 83)	<b>TVD Reference:</b>	WELL @ 4953.0usft (Original Well Elev)
<b>Site:</b>	ROSS 8-60 18 SESW & SWSE SEC 18 T8N R60W 6th P.M.	<b>MD Reference:</b>	WELL @ 4953.0usft (Original Well Elev)
<b>Well:</b>	ROSS 8-60 18-7-2	<b>North Reference:</b>	True
<b>Wellbore:</b>	Wellbore #1	<b>Survey Calculation Method:</b>	Minimum Curvature
<b>Design:</b>	Design #1	<b>Database:</b>	EDM 5000.16 Single User Db

### Design Targets

#### Target Name

- hit/miss target - Shape	Dip Angle (°)	Dip Dir. (°)	TVD (usft)	+N/-S (usft)	+E/-W (usft)	Northing (usft)	Easting (usft)	Latitude	Longitude
ROSS 8-60 18-7-2 B+	0.00	0.88	6,507.0	9,169.8	-1,360.4	1,494,063.07	3,377,198.88	40° 40' 53.962 N	104° 8' 23.827 W
- plan misses target center by 2.2usft at 15967.9usft MD (6506.9 TVD, 9169.8 N, -1358.3 E)									
- Point									
ROSS 8-60 18-7-2 BF	0.00	0.88	6,507.0	432.9	-1,447.5	1,485,325.95	3,377,246.32	40° 39' 27.630 N	104° 8' 24.950 W
- plan hits target center									
- Point									
ROSS 8-60 18-7-2 EF	0.00	0.88	6,507.0	9,019.7	-1,361.3	1,493,912.97	3,377,200.35	40° 40' 52.478 N	104° 8' 23.838 W
- plan hits target center									
- Point									

### Plan Annotations

Measured Depth (usft)	Vertical Depth (usft)	Local Coordinates		Comment
		+N/-S (usft)	+E/-W (usft)	
800	800	0	0	Start Build 2.00
1782	1763	-34	-163	Start 3406.4 hold at 1782.0 MD
5188	4971	-266	-1284	Start Drop -2.00
6170	5934	-300	-1447	Start Build 10.00
7070	6507	273	-1447	Start DLS 0.01 TFO -180.00
7230	6507	433	-1447	Start DLS 0.01 TFO 87.84
15,818	6507	9020	-1361	Start 150.5 hold at 15817.8 MD
15,968	6507	9170	-1358	TD at 15968.2