

Bison Oil & Gas II, LLC

WELD COUNTY, COLORADO (NAD 83)

ROSS 8-60 18 SESW & SWSE SEC 18 T8N R60W 6th P.M.

ROSS 8-60 18-7-1

Wellbore #1

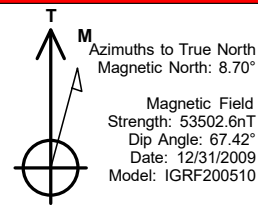
Plan: Design #1

Standard Survey Report

12 April, 2021



Project: WELD COUNTY, COLORADO (NAD 83)
Site: ROSS 8-60 18 SESW & SWSE SEC 18 T8N R60W 6th P.M.
Well: ROSS 8-60 18-7-1
Wellbore: Wellbore #1
Design: Design #1



ANNOTATIONS

MD	Inc	Azi	TVD	+N/-S	+E/-W	VSec	Dep	Annotation
800.0	0.00	0.00	800.0	0.0	0.0	0.0	0.0	Start Build 2.00
2377.2	31.54	261.81	2298.7	-60.3	-419.0	30.0	423.3	Start 2419.0 hold at 2377.2 MD
4796.2	31.54	261.81	4360.3	-240.6	-1671.6	119.9	1688.8	Start Drop -2.00
6373.4	0.00	0.00	5859.0	-300.9	-2090.6	149.9	2112.1	Start Build 10.00
7273.4	90.00	0.87	6432.0	272.0	-2081.8	707.9	2685.1	Start DLS 0.02 TFO 180.00
7424.5	89.98	0.87	6432.0	423.1	-2079.5	855.1	2836.2	Start DLS 0.01 TFO -85.54
16019.1	90.02	0.28	6432.0	9017.2	-1993.1	9234.8	11430.8	Start DLS 0.06 TFO 118.54
16169.2	89.98	0.36	6432.0	9167.3	-1992.3	9381.3	11580.9	TD at 16169.2

PROPOSED LOCAL COORDINATES:

SHL: 546 ft FSL & 2436 ft FWL Sec 18

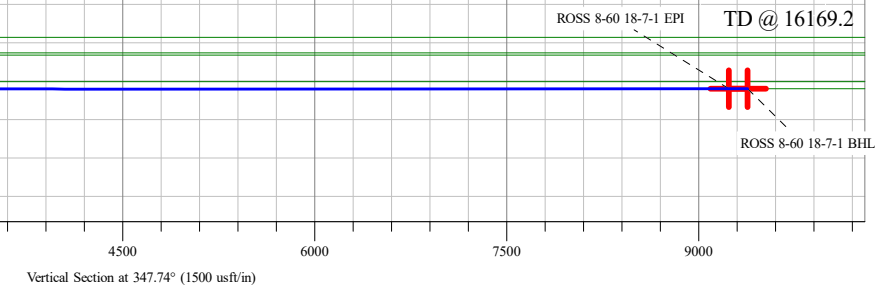
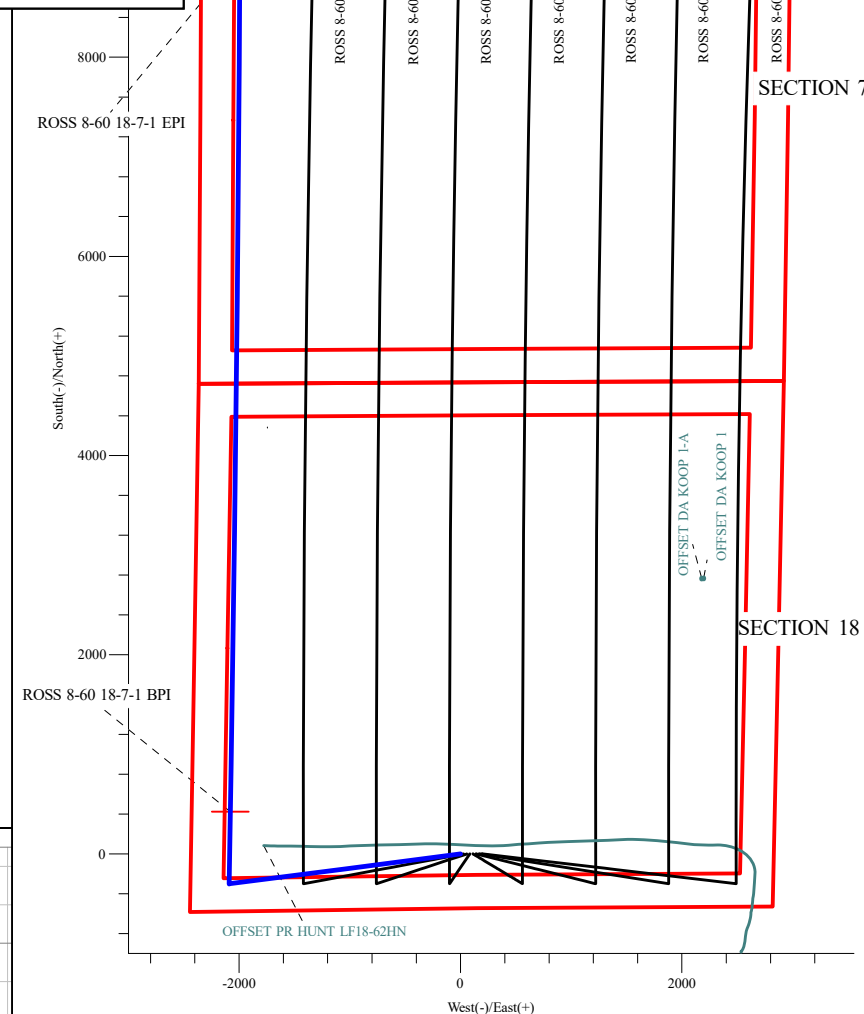
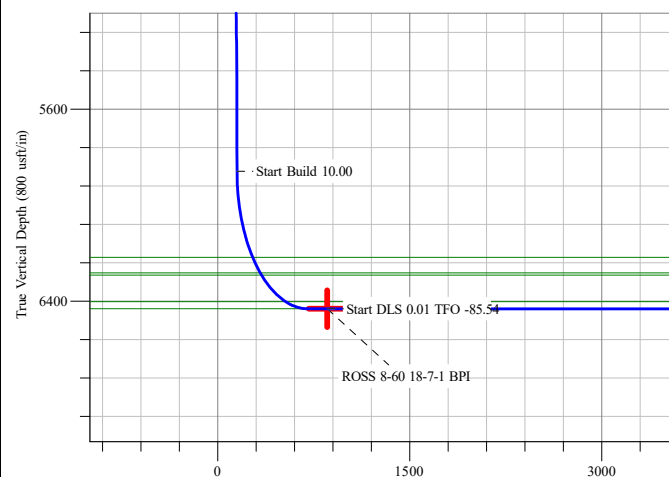
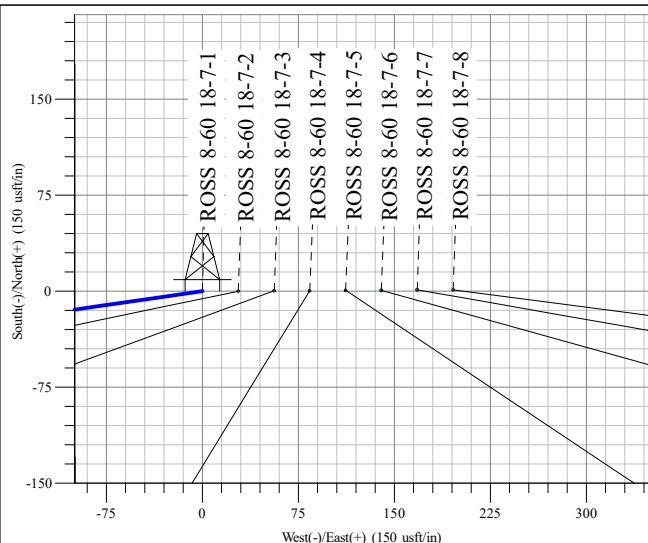
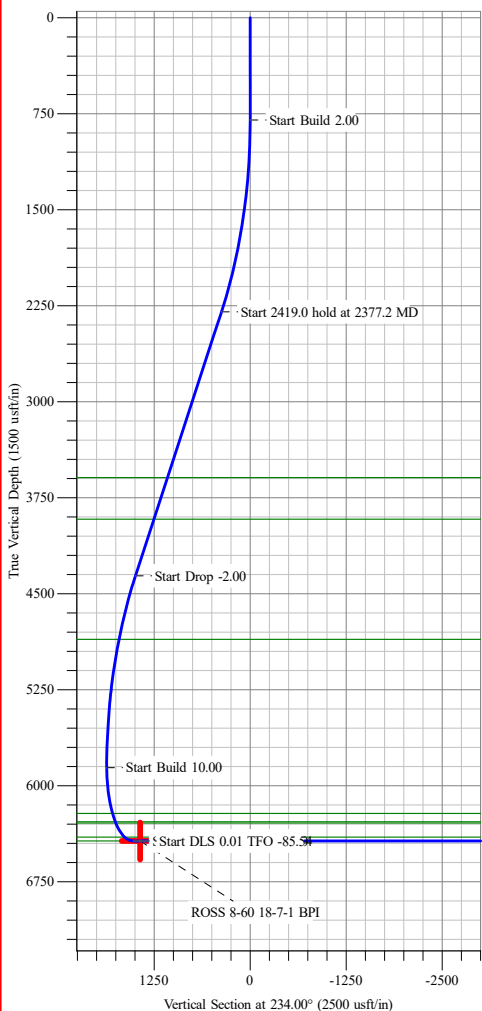
BPI: 1000 ft FSL & 350 ft FWL Sec 18

EPI: 1000 ft FNL & 350 ft FWL Sec 7

BHL: 850 ft FNL & 350 ft FWL Sec 7

WELLBORE TARGET DETAILS (LAT/LONG)

Name	TVD	+N/-S	+E/-W	Northing	Easting	Latitude	Longitude
ROSS 8-60 18-7-1 BHL	6432.0	9167.3	-1992.3	1494050.41	3376539.18	40° 40' 53.936 N 104° 8' 32.392 W	
ROSS 8-60 18-7-1 BPI	6432.0	423.1	-2079.5	1485306.00	3376586.50	40° 39' 27.533 N 104° 8' 33.515 W	
ROSS 8-60 18-7-1 EPI	6432.0	9017.2	-1993.1	1493900.31	3376540.65	40° 40' 52.453 N 104° 8' 32.402 W	Point



Survey Report

Company:	Bison Oil & Gas II, LLC	Local Co-ordinate Reference:	Well ROSS 8-60 18-7-1
Project:	WELD COUNTY, COLORADO (NAD 83)	TVD Reference:	KB 25 @ 4974.6usft (Original Well Elev)
Site:	ROSS 8-60 18 SESW & SWSE SEC 18 T8N R60W 6th P.M.	MD Reference:	KB 25 @ 4974.6usft (Original Well Elev)
Well:	ROSS 8-60 18-7-1	North Reference:	True
Wellbore:	Wellbore #1	Survey Calculation Method:	Minimum Curvature
Design:	Design #1	Database:	EDM 5000.16 Single User Db

Project	WELD COUNTY, COLORADO (NAD 83),		
Map System:	US State Plane 1983	System Datum:	Mean Sea Level
Geo Datum:	North American Datum 1983		
Map Zone:	Colorado Northern Zone		Using geodetic scale factor

Site	ROSS 8-60 18 SESW & SWSE SEC 18 T8N R60W 6th P.M.		
Site Position:		Northing:	1,484,919.11 usft
From:	Lat/Long	Easting:	3,378,868.10 usft
Position Uncertainty:	0.0 usft	Slot Radius:	13-3/16 "
		Latitude:	40° 39' 23.364 N
		Longitude:	104° 8' 3.991 W

Well	ROSS 8-60 18-7-1		
Well Position	+N/-S	0.0 usft	Northing:
	+E/-W	0.0 usft	Easting:
Position Uncertainty	0.0 usft	Wellhead Elevation:	usft
Grid Convergence:	0.88 °	Ground Level:	4,949.6 usft
		Latitude:	40° 39' 23.353 N
		Longitude:	104° 8' 6.533 W

Wellbore	Wellbore #1		
Magnetics	Model Name	Sample Date	Declination (°)
	IGRF200510	12/31/2009	8.70
			Dip Angle (°)
			67.42
			Field Strength (nT)
			53,502.57511527

Design	Design #1		
Audit Notes:			
Version:	Phase:	PROTOTYPE	Tie On Depth:
			0.0
Vertical Section:	Depth From (TVD) (usft)	+N/-S (usft)	+E/-W (usft)
	0.0	0.0	0.0
			Direction (°)
			347.74

Survey Tool Program	Date 4/12/2021		
From (usft)	To (usft)	Survey (Wellbore)	Tool Name
0.0	16,168.6	Design #1 (Wellbore #1)	MWD
			Description
			Fixed:v2:standard declination

Planned Survey									
Measured Depth (usft)	Inclination (°)	Azimuth (°)	Vertical Depth (usft)	+N/-S (usft)	+E/-W (usft)	Vertical Section (usft)	Dogleg Rate (°/100usft)	Build Rate (°/100usft)	Turn Rate (°/100usft)
0.0	0.00	0.00	0.0	0.0	0.0	0.0	0.00	0.00	0.00
100.0	0.00	0.00	100.0	0.0	0.0	0.0	0.00	0.00	0.00
200.0	0.00	0.00	200.0	0.0	0.0	0.0	0.00	0.00	0.00
300.0	0.00	0.00	300.0	0.0	0.0	0.0	0.00	0.00	0.00
400.0	0.00	0.00	400.0	0.0	0.0	0.0	0.00	0.00	0.00
500.0	0.00	0.00	500.0	0.0	0.0	0.0	0.00	0.00	0.00
600.0	0.00	0.00	600.0	0.0	0.0	0.0	0.00	0.00	0.00
700.0	0.00	0.00	700.0	0.0	0.0	0.0	0.00	0.00	0.00
800.0	0.00	0.00	800.0	0.0	0.0	0.0	0.00	0.00	0.00

Survey Report

Company:	Bison Oil & Gas II, LLC	Local Co-ordinate Reference:	Well ROSS 8-60 18-7-1
Project:	WELD COUNTY, COLORADO (NAD 83)	TVD Reference:	KB 25 @ 4974.6usft (Original Well Elev)
Site:	ROSS 8-60 18 SESW & SWSE SEC 18 T8N R60W 6th P.M.	MD Reference:	KB 25 @ 4974.6usft (Original Well Elev)
Well:	ROSS 8-60 18-7-1	North Reference:	True
Wellbore:	Wellbore #1	Survey Calculation Method:	Minimum Curvature
Design:	Design #1	Database:	EDM 5000.16 Single User Db

Planned Survey										
Measured Depth (usft)	Inclination (°)	Azimuth (°)	Vertical Depth (usft)	+N/-S (usft)	+E/-W (usft)	Vertical Section (usft)	Dogleg Rate (°/100usft)	Build Rate (°/100usft)	Turn Rate (°/100usft)	
Start Build 2.00										
900.0	2.00	261.81	900.0	-0.2	-1.7	0.1	2.00	2.00	0.00	
1,000.0	4.00	261.81	999.8	-1.0	-6.9	0.5	2.00	2.00	0.00	
1,100.0	6.00	261.81	1,099.4	-2.2	-15.5	1.1	2.00	2.00	0.00	
1,200.0	8.00	261.81	1,198.7	-4.0	-27.6	2.0	2.00	2.00	0.00	
1,300.0	10.00	261.81	1,297.5	-6.2	-43.1	3.1	2.00	2.00	0.00	
1,400.0	12.00	261.81	1,395.6	-8.9	-62.0	4.4	2.00	2.00	0.00	
1,500.0	14.00	261.81	1,493.1	-12.1	-84.2	6.0	2.00	2.00	0.00	
1,600.0	16.00	261.81	1,589.6	-15.8	-109.8	7.9	2.00	2.00	0.00	
1,700.0	18.00	261.81	1,685.3	-20.0	-138.8	10.0	2.00	2.00	0.00	
1,800.0	20.00	261.81	1,779.8	-24.6	-171.0	12.3	2.00	2.00	0.00	
1,900.0	22.00	261.81	1,873.2	-29.7	-206.5	14.8	2.00	2.00	0.00	
2,000.0	24.00	261.81	1,965.2	-35.3	-245.1	17.6	2.00	2.00	0.00	
2,100.0	26.00	261.81	2,055.8	-41.3	-287.0	20.6	2.00	2.00	0.00	
2,200.0	28.00	261.81	2,144.9	-47.8	-331.9	23.8	2.00	2.00	0.00	
2,300.0	30.00	261.81	2,232.4	-54.7	-379.9	27.2	2.00	2.00	0.00	
2,377.2	31.54	261.81	2,298.7	-60.3	-419.0	30.0	2.00	2.00	0.00	
Start 2419.0 hold at 2377.2 MD										
2,400.0	31.54	261.81	2,318.1	-62.0	-430.8	30.9	0.00	0.00	0.00	
2,500.0	31.54	261.81	2,403.4	-69.5	-482.6	34.6	0.00	0.00	0.00	
2,600.0	31.54	261.81	2,488.6	-76.9	-534.4	38.3	0.00	0.00	0.00	
2,700.0	31.54	261.81	2,573.8	-84.4	-586.1	42.0	0.00	0.00	0.00	
2,800.0	31.54	261.81	2,659.0	-91.8	-637.9	45.7	0.00	0.00	0.00	
2,900.0	31.54	261.81	2,744.3	-99.3	-689.7	49.5	0.00	0.00	0.00	
3,000.0	31.54	261.81	2,829.5	-106.7	-741.5	53.2	0.00	0.00	0.00	
3,100.0	31.54	261.81	2,914.7	-114.2	-793.3	56.9	0.00	0.00	0.00	
3,200.0	31.54	261.81	2,999.9	-121.6	-845.0	60.6	0.00	0.00	0.00	
3,300.0	31.54	261.81	3,085.2	-129.1	-896.8	64.3	0.00	0.00	0.00	
3,400.0	31.54	261.81	3,170.4	-136.5	-948.6	68.0	0.00	0.00	0.00	
3,500.0	31.54	261.81	3,255.6	-144.0	-1,000.4	71.7	0.00	0.00	0.00	
3,600.0	31.54	261.81	3,340.8	-151.4	-1,052.2	75.5	0.00	0.00	0.00	
3,700.0	31.54	261.81	3,426.1	-158.9	-1,104.0	79.2	0.00	0.00	0.00	
3,800.0	31.54	261.81	3,511.3	-166.3	-1,155.7	82.9	0.00	0.00	0.00	
3,900.0	31.54	261.81	3,596.5	-173.8	-1,207.5	86.6	0.00	0.00	0.00	
4,000.0	31.54	261.81	3,681.7	-181.3	-1,259.3	90.3	0.00	0.00	0.00	
4,100.0	31.54	261.81	3,767.0	-188.7	-1,311.1	94.0	0.00	0.00	0.00	
4,200.0	31.54	261.81	3,852.2	-196.2	-1,362.9	97.7	0.00	0.00	0.00	
4,300.0	31.54	261.81	3,937.4	-203.6	-1,414.6	101.5	0.00	0.00	0.00	
4,400.0	31.54	261.81	4,022.6	-211.1	-1,466.4	105.2	0.00	0.00	0.00	
4,500.0	31.54	261.81	4,107.8	-218.5	-1,518.2	108.9	0.00	0.00	0.00	
4,600.0	31.54	261.81	4,193.1	-226.0	-1,570.0	112.6	0.00	0.00	0.00	
4,700.0	31.54	261.81	4,278.3	-233.4	-1,621.8	116.3	0.00	0.00	0.00	
4,796.2	31.54	261.81	4,360.3	-240.6	-1,671.6	119.9	0.00	0.00	0.00	

Survey Report

Company:	Bison Oil & Gas II, LLC	Local Co-ordinate Reference:	Well ROSS 8-60 18-7-1
Project:	WELD COUNTY, COLORADO (NAD 83)	TVD Reference:	KB 25 @ 4974.6usft (Original Well Elev)
Site:	ROSS 8-60 18 SESW & SWSE SEC 18 T8N R60W 6th P.M.	MD Reference:	KB 25 @ 4974.6usft (Original Well Elev)
Well:	ROSS 8-60 18-7-1	North Reference:	True
Wellbore:	Wellbore #1	Survey Calculation Method:	Minimum Curvature
Design:	Design #1	Database:	EDM 5000.16 Single User Db

Planned Survey

Measured Depth (usft)	Inclination (°)	Azimuth (°)	Vertical Depth (usft)	+N/-S (usft)	+E/-W (usft)	Vertical Section (usft)	Dogleg Rate (°/100usft)	Build Rate (°/100usft)	Turn Rate (°/100usft)
Start Drop -2.00									
4,800.0	31.47	261.81	4,363.5	-240.9	-1,673.6	120.0	2.00	-2.00	0.00
4,900.0	29.47	261.81	4,449.7	-248.1	-1,723.7	123.6	2.00	-2.00	0.00
5,000.0	27.47	261.81	4,537.6	-254.9	-1,770.9	127.0	2.00	-2.00	0.00
5,100.0	25.47	261.81	4,627.1	-261.2	-1,815.0	130.2	2.00	-2.00	0.00
5,200.0	23.47	261.81	4,718.1	-267.1	-1,856.0	133.1	2.00	-2.00	0.00
5,300.0	21.47	261.81	4,810.5	-272.6	-1,893.8	135.8	2.00	-2.00	0.00
5,400.0	19.47	261.81	4,904.2	-277.6	-1,928.5	138.3	2.00	-2.00	0.00
5,500.0	17.47	261.81	4,999.1	-282.1	-1,959.8	140.5	2.00	-2.00	0.00
5,600.0	15.47	261.81	5,095.0	-286.1	-1,987.9	142.6	2.00	-2.00	0.00
5,700.0	13.47	261.81	5,191.8	-289.7	-2,012.6	144.3	2.00	-2.00	0.00
5,800.0	11.47	261.81	5,289.4	-292.8	-2,034.0	145.9	2.00	-2.00	0.00
5,900.0	9.47	261.81	5,387.8	-295.3	-2,051.9	147.2	2.00	-2.00	0.00
6,000.0	7.47	261.81	5,486.7	-297.4	-2,066.5	148.2	2.00	-2.00	0.00
6,100.0	5.47	261.81	5,586.0	-299.0	-2,077.7	149.0	2.00	-2.00	0.00
6,200.0	3.47	261.81	5,685.7	-300.2	-2,085.4	149.6	2.00	-2.00	0.00
6,300.0	1.47	261.81	5,785.6	-300.8	-2,089.6	149.9	2.00	-2.00	0.00
6,373.4	0.00	0.00	5,859.0	-300.9	-2,090.6	149.9	2.00	-2.00	0.00
Start Build 10.00									
6,400.0	2.66	0.87	5,885.6	-300.3	-2,090.6	150.5	10.00	10.00	0.00
6,500.0	12.66	0.87	5,984.6	-287.0	-2,090.4	163.5	10.00	10.00	0.00
6,600.0	22.66	0.87	6,079.7	-256.7	-2,089.9	193.0	10.00	10.00	0.00
6,700.0	32.66	0.87	6,168.2	-210.3	-2,089.2	238.2	10.00	10.00	0.00
6,800.0	42.66	0.87	6,247.3	-149.3	-2,088.3	297.6	10.00	10.00	0.00
6,900.0	52.66	0.87	6,314.5	-75.5	-2,087.1	369.5	10.00	10.00	0.00
7,000.0	62.66	0.87	6,367.9	8.9	-2,085.8	451.6	10.00	10.00	0.00
7,100.0	72.66	0.87	6,405.9	101.3	-2,084.4	541.6	10.00	10.00	0.00
7,200.0	82.66	0.87	6,427.3	198.8	-2,083.0	636.6	10.00	10.00	0.00
7,273.4	90.00	0.87	6,431.9	272.0	-2,081.8	707.9	10.00	10.00	0.00
Start DLS 0.02 TFO 180.00									
7,300.0	89.99	0.87	6,431.9	298.6	-2,081.4	733.8	0.02	-0.02	0.00
7,400.0	89.97	0.87	6,432.0	398.6	-2,079.9	831.2	0.02	-0.02	0.00
7,424.5	89.97	0.87	6,432.0	423.1	-2,079.5	855.0	0.02	-0.02	0.00
Start DLS 0.01 TFO -83.90									
7,500.0	89.97	0.87	6,432.0	498.6	-2,078.4	928.6	0.01	0.00	-0.01
7,600.0	89.97	0.86	6,432.1	598.6	-2,076.9	1,026.0	0.01	0.00	-0.01
7,700.0	89.97	0.85	6,432.1	698.6	-2,075.4	1,123.4	0.01	0.00	-0.01
7,800.0	89.97	0.85	6,432.2	798.5	-2,073.9	1,220.8	0.01	0.00	-0.01
7,900.0	89.97	0.84	6,432.2	898.5	-2,072.4	1,318.1	0.01	0.00	-0.01
8,000.0	89.97	0.83	6,432.3	998.5	-2,071.0	1,415.5	0.01	0.00	-0.01
8,100.0	89.97	0.83	6,432.3	1,098.5	-2,069.5	1,512.9	0.01	0.00	-0.01
8,200.0	89.97	0.82	6,432.4	1,198.5	-2,068.1	1,610.4	0.01	0.00	-0.01
8,300.0	89.97	0.81	6,432.4	1,298.5	-2,066.7	1,707.8	0.01	0.00	-0.01

Survey Report

Company:	Bison Oil & Gas II, LLC	Local Co-ordinate Reference:	Well ROSS 8-60 18-7-1
Project:	WELD COUNTY, COLORADO (NAD 83)	TVD Reference:	KB 25 @ 4974.6usft (Original Well Elev)
Site:	ROSS 8-60 18 SESW & SWSE SEC 18 T8N R60W 6th P.M.	MD Reference:	KB 25 @ 4974.6usft (Original Well Elev)
Well:	ROSS 8-60 18-7-1	North Reference:	True
Wellbore:	Wellbore #1	Survey Calculation Method:	Minimum Curvature
Design:	Design #1	Database:	EDM 5000.16 Single User Db

Planned Survey									
Measured Depth (usft)	Inclination (°)	Azimuth (°)	Vertical Depth (usft)	+N/-S (usft)	+E/-W (usft)	Vertical Section (usft)	Dogleg Rate (°/100usft)	Build Rate (°/100usft)	Turn Rate (°/100usft)
8,400.0	89.98	0.81	6,432.5	1,398.5	-2,065.3	1,805.2	0.01	0.00	-0.01
8,500.0	89.98	0.80	6,432.5	1,498.5	-2,063.9	1,902.6	0.01	0.00	-0.01
8,600.0	89.98	0.79	6,432.6	1,598.5	-2,062.5	2,000.0	0.01	0.00	-0.01
8,700.0	89.98	0.78	6,432.6	1,698.4	-2,061.1	2,097.4	0.01	0.00	-0.01
8,800.0	89.98	0.78	6,432.6	1,798.4	-2,059.7	2,194.8	0.01	0.00	-0.01
8,900.0	89.98	0.77	6,432.7	1,898.4	-2,058.4	2,292.3	0.01	0.00	-0.01
9,000.0	89.98	0.76	6,432.7	1,998.4	-2,057.0	2,389.7	0.01	0.00	-0.01
9,100.0	89.98	0.76	6,432.7	2,098.4	-2,055.7	2,487.1	0.01	0.00	-0.01
9,200.0	89.98	0.75	6,432.8	2,198.4	-2,054.4	2,584.5	0.01	0.00	-0.01
9,300.0	89.98	0.74	6,432.8	2,298.4	-2,053.1	2,682.0	0.01	0.00	-0.01
9,400.0	89.98	0.74	6,432.8	2,398.4	-2,051.8	2,779.4	0.01	0.00	-0.01
9,500.0	89.98	0.73	6,432.9	2,498.4	-2,050.5	2,876.8	0.01	0.00	-0.01
9,600.0	89.98	0.72	6,432.9	2,598.4	-2,049.3	2,974.3	0.01	0.00	-0.01
9,700.0	89.98	0.72	6,432.9	2,698.4	-2,048.0	3,071.7	0.01	0.00	-0.01
9,800.0	89.99	0.71	6,432.9	2,798.4	-2,046.8	3,169.2	0.01	0.00	-0.01
9,900.0	89.99	0.70	6,433.0	2,898.3	-2,045.5	3,266.6	0.01	0.00	-0.01
10,000.0	89.99	0.69	6,433.0	2,998.3	-2,044.3	3,364.1	0.01	0.00	-0.01
10,100.0	89.99	0.69	6,433.0	3,098.3	-2,043.1	3,461.5	0.01	0.00	-0.01
10,200.0	89.99	0.68	6,433.0	3,198.3	-2,041.9	3,559.0	0.01	0.00	-0.01
10,300.0	89.99	0.67	6,433.1	3,298.3	-2,040.7	3,656.5	0.01	0.00	-0.01
10,400.0	89.99	0.67	6,433.1	3,398.3	-2,039.6	3,753.9	0.01	0.00	-0.01
10,500.0	89.99	0.66	6,433.1	3,498.3	-2,038.4	3,851.4	0.01	0.00	-0.01
10,600.0	89.99	0.65	6,433.1	3,598.3	-2,037.2	3,948.9	0.01	0.00	-0.01
10,700.0	89.99	0.65	6,433.1	3,698.3	-2,036.1	4,046.3	0.01	0.00	-0.01
10,800.0	89.99	0.64	6,433.1	3,798.3	-2,035.0	4,143.8	0.01	0.00	-0.01
10,900.0	89.99	0.63	6,433.1	3,898.3	-2,033.9	4,241.3	0.01	0.00	-0.01
11,000.0	89.99	0.63	6,433.2	3,998.3	-2,032.8	4,338.8	0.01	0.00	-0.01
11,100.0	90.00	0.62	6,433.2	4,098.3	-2,031.7	4,436.2	0.01	0.00	-0.01
11,200.0	90.00	0.61	6,433.2	4,198.3	-2,030.6	4,533.7	0.01	0.00	-0.01
11,300.0	90.00	0.61	6,433.2	4,298.3	-2,029.6	4,631.2	0.01	0.00	-0.01
11,400.0	90.00	0.60	6,433.2	4,398.2	-2,028.5	4,728.7	0.01	0.00	-0.01
11,500.0	90.00	0.59	6,433.2	4,498.2	-2,027.5	4,826.2	0.01	0.00	-0.01
11,600.0	90.00	0.58	6,433.2	4,598.2	-2,026.4	4,923.7	0.01	0.00	-0.01
11,700.0	90.00	0.58	6,433.2	4,698.2	-2,025.4	5,021.2	0.01	0.00	-0.01
11,800.0	90.00	0.57	6,433.2	4,798.2	-2,024.4	5,118.7	0.01	0.00	-0.01
11,900.0	90.00	0.56	6,433.2	4,898.2	-2,023.4	5,216.2	0.01	0.00	-0.01
12,000.0	90.00	0.56	6,433.2	4,998.2	-2,022.5	5,313.7	0.01	0.00	-0.01
12,100.0	90.00	0.55	6,433.2	5,098.2	-2,021.5	5,411.2	0.01	0.00	-0.01
12,200.0	90.00	0.54	6,433.2	5,198.2	-2,020.5	5,508.7	0.01	0.00	-0.01
12,300.0	90.00	0.54	6,433.2	5,298.2	-2,019.6	5,606.2	0.01	0.00	-0.01
12,400.0	90.01	0.53	6,433.2	5,398.2	-2,018.7	5,703.8	0.01	0.00	-0.01
12,500.0	90.01	0.52	6,433.1	5,498.2	-2,017.7	5,801.3	0.01	0.00	-0.01

Survey Report

Company:	Bison Oil & Gas II, LLC	Local Co-ordinate Reference:	Well ROSS 8-60 18-7-1
Project:	WELD COUNTY, COLORADO (NAD 83)	TVD Reference:	KB 25 @ 4974.6usft (Original Well Elev)
Site:	ROSS 8-60 18 SESW & SWSE SEC 18 T8N R60W 6th P.M.	MD Reference:	KB 25 @ 4974.6usft (Original Well Elev)
Well:	ROSS 8-60 18-7-1	North Reference:	True
Wellbore:	Wellbore #1	Survey Calculation Method:	Minimum Curvature
Design:	Design #1	Database:	EDM 5000.16 Single User Db

Planned Survey									
Measured Depth (usft)	Inclination (°)	Azimuth (°)	Vertical Depth (usft)	+N/-S (usft)	+E/-W (usft)	Vertical Section (usft)	Dogleg Rate (°/100usft)	Build Rate (°/100usft)	Turn Rate (°/100usft)
12,600.0	90.01	0.52	6,433.1	5,598.2	-2,016.8	5,898.8	0.01	0.00	-0.01
12,700.0	90.01	0.51	6,433.1	5,698.2	-2,015.9	5,996.3	0.01	0.00	-0.01
12,800.0	90.01	0.50	6,433.1	5,798.2	-2,015.1	6,093.9	0.01	0.00	-0.01
12,900.0	90.01	0.49	6,433.1	5,898.2	-2,014.2	6,191.4	0.01	0.00	-0.01
13,000.0	90.01	0.49	6,433.1	5,998.2	-2,013.3	6,288.9	0.01	0.00	-0.01
13,100.0	90.01	0.48	6,433.1	6,098.2	-2,012.5	6,386.5	0.01	0.00	-0.01
13,200.0	90.01	0.47	6,433.0	6,198.2	-2,011.7	6,484.0	0.01	0.00	-0.01
13,300.0	90.01	0.47	6,433.0	6,298.2	-2,010.8	6,581.5	0.01	0.00	-0.01
13,400.0	90.01	0.46	6,433.0	6,398.2	-2,010.0	6,679.1	0.01	0.00	-0.01
13,500.0	90.01	0.45	6,433.0	6,498.2	-2,009.2	6,776.6	0.01	0.00	-0.01
13,600.0	90.01	0.45	6,433.0	6,598.1	-2,008.4	6,874.2	0.01	0.00	-0.01
13,700.0	90.01	0.44	6,432.9	6,698.1	-2,007.7	6,971.7	0.01	0.00	-0.01
13,800.0	90.02	0.43	6,432.9	6,798.1	-2,006.9	7,069.3	0.01	0.00	-0.01
13,900.0	90.02	0.43	6,432.9	6,898.1	-2,006.2	7,166.8	0.01	0.00	-0.01
14,000.0	90.02	0.42	6,432.8	6,998.1	-2,005.4	7,264.4	0.01	0.00	-0.01
14,100.0	90.02	0.41	6,432.8	7,098.1	-2,004.7	7,362.0	0.01	0.00	-0.01
14,200.0	90.02	0.41	6,432.8	7,198.1	-2,004.0	7,459.5	0.01	0.00	-0.01
14,300.0	90.02	0.40	6,432.8	7,298.1	-2,003.3	7,557.1	0.01	0.00	-0.01
14,400.0	90.02	0.39	6,432.7	7,398.1	-2,002.6	7,654.7	0.01	0.00	-0.01
14,500.0	90.02	0.38	6,432.7	7,498.1	-2,001.9	7,752.2	0.01	0.00	-0.01
14,600.0	90.02	0.38	6,432.6	7,598.1	-2,001.2	7,849.8	0.01	0.00	-0.01
14,700.0	90.02	0.37	6,432.6	7,698.1	-2,000.6	7,947.4	0.01	0.00	-0.01
14,800.0	90.02	0.36	6,432.6	7,798.1	-2,000.0	8,045.0	0.01	0.00	-0.01
14,900.0	90.02	0.36	6,432.5	7,898.1	-1,999.3	8,142.5	0.01	0.00	-0.01
15,000.0	90.02	0.35	6,432.5	7,998.1	-1,998.7	8,240.1	0.01	0.00	-0.01
15,100.0	90.03	0.34	6,432.4	8,098.1	-1,998.1	8,337.7	0.01	0.00	-0.01
15,200.0	90.03	0.34	6,432.4	8,198.1	-1,997.5	8,435.3	0.01	0.00	-0.01
15,300.0	90.03	0.33	6,432.4	8,298.1	-1,996.9	8,532.9	0.01	0.00	-0.01
15,400.0	90.03	0.32	6,432.3	8,398.1	-1,996.4	8,630.5	0.01	0.00	-0.01
15,500.0	90.03	0.32	6,432.3	8,498.1	-1,995.8	8,728.1	0.01	0.00	-0.01
15,600.0	90.03	0.31	6,432.2	8,598.1	-1,995.3	8,825.7	0.01	0.00	-0.01
15,700.0	90.03	0.30	6,432.2	8,698.1	-1,994.7	8,923.3	0.01	0.00	-0.01
15,800.0	90.03	0.29	6,432.1	8,798.1	-1,994.2	9,020.9	0.01	0.00	-0.01
15,900.0	90.03	0.29	6,432.1	8,898.1	-1,993.7	9,118.5	0.01	0.00	-0.01
16,000.0	90.03	0.28	6,432.0	8,998.1	-1,993.2	9,216.1	0.01	0.00	-0.01
16,018.9	90.03	0.28	6,432.0	9,017.1	-1,993.1	9,234.7	0.00	0.00	0.00
Start DLS 0.07 TFO 125.13									
16,019.1	90.03	0.28	6,432.0	9,017.2	-1,993.1	9,234.8	0.82	0.09	-0.81
16,100.0	90.00	0.33	6,432.0	9,098.1	-1,992.7	9,313.7	0.07	-0.04	0.06
16,169.0	89.97	0.36	6,432.0	9,167.2	-1,992.3	9,381.2	0.07	-0.04	0.06
TD at 16169.2									
16,169.2	89.97	0.36	6,432.0	9,167.3	-1,992.3	9,381.3	0.07	-0.04	0.06

Survey Report

Company:	Bison Oil & Gas II, LLC	Local Co-ordinate Reference:	Well ROSS 8-60 18-7-1
Project:	WELD COUNTY, COLORADO (NAD 83)	TVD Reference:	KB 25 @ 4974.6usft (Original Well Elev)
Site:	ROSS 8-60 18 SESW & SWSE SEC 18 T8N R60W 6th P.M.	MD Reference:	KB 25 @ 4974.6usft (Original Well Elev)
Well:	ROSS 8-60 18-7-1	North Reference:	True
Wellbore:	Wellbore #1	Survey Calculation Method:	Minimum Curvature
Design:	Design #1	Database:	EDM 5000.16 Single User Db

Design Targets

Target Name

- hit/miss target - Shape	Dip Angle (°)	Dip Dir. (°)	TVD (usft)	+N/-S (usft)	+E/-W (usft)	Northing (usft)	Easting (usft)	Latitude	Longitude
ROSS 8-60 18-7-1 EF - plan hits target center - Point	0.00	0.88	6,432.0	9,017.2	-1,993.1	1,493,900.31	3,376,540.64	40° 40' 52.453 N	104° 8' 32.402 W
ROSS 8-60 18-7-1 BF - plan hits target center - Point	0.00	0.88	6,432.0	9,167.3	-1,992.3	1,494,050.41	3,376,539.17	40° 40' 53.936 N	104° 8' 32.392 W
ROSS 8-60 18-7-1 BF - plan hits target center - Point	0.00	0.88	6,432.0	423.1	-2,079.5	1,485,306.01	3,376,586.49	40° 39' 27.533 N	104° 8' 33.515 W

Plan Annotations

Measured Depth (usft)	Vertical Depth (usft)	Local Coordinates		Comment
		+N/-S (usft)	+E/-W (usft)	
800	800	0	0	Start Build 2.00
2377	2299	-60	-419	Start 2419.0 hold at 2377.2 MD
4796	4360	-241	-1672	Start Drop -2.00
6373	5859	-301	-2091	Start Build 10.00
7273	6432	272	-2082	Start DLS 0.02 TFO 180.00
7424	6432	423	-2080	Start DLS 0.01 TFO -83.90
16,019	6432	9017	-1993	Start DLS 0.07 TFO 125.13
16,169	6432	9167	-1992	TD at 16169.1