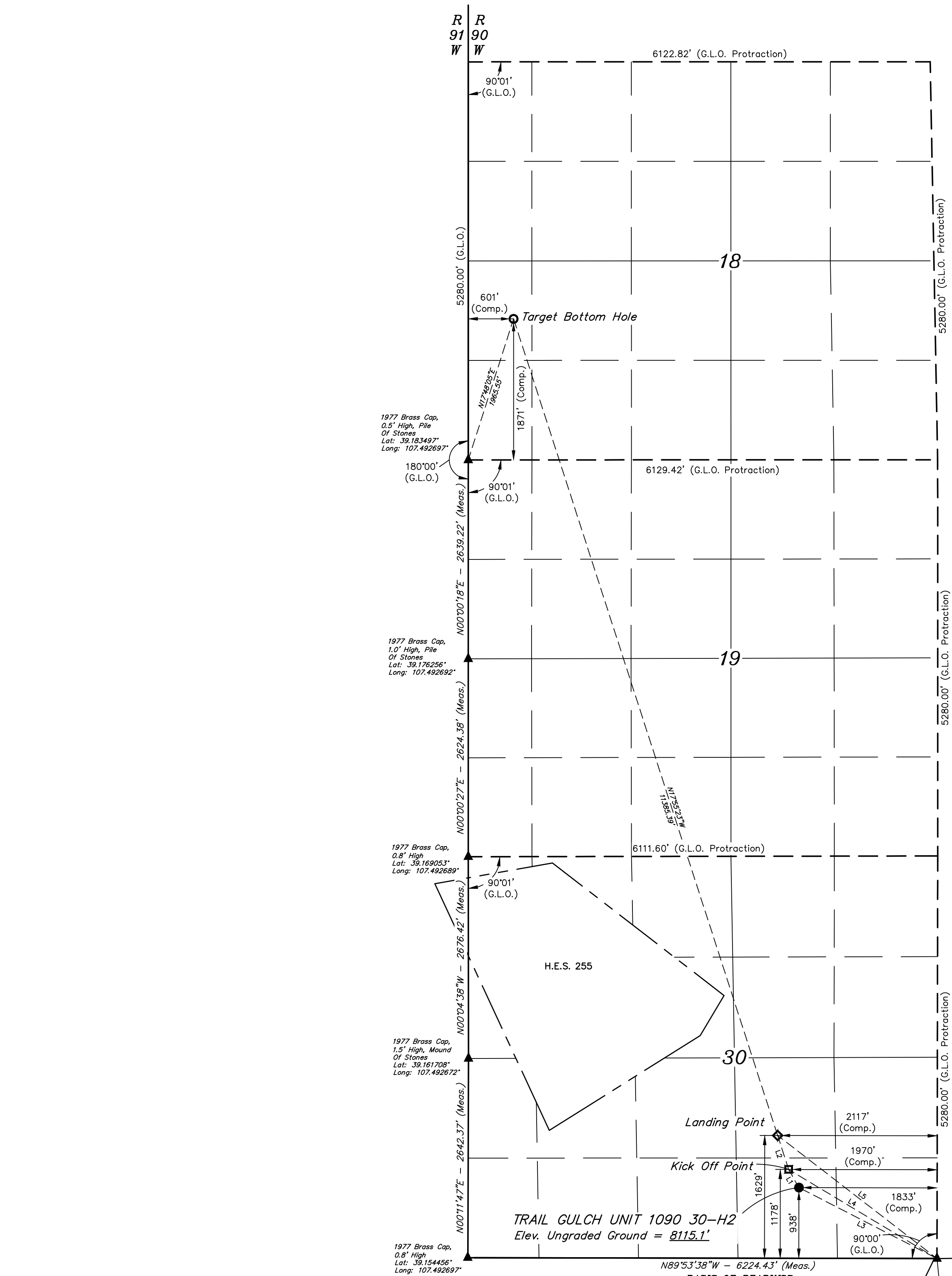


LEGEND:

- = PROPOSED WELLHEAD.
- ◻ = KICK OFF POINT
- ◊ = LANDING POINT
- = TARGET BOTTOM HOLE.
- ▲ = SECTION CORNERS LOCATED. (NAD 83)

T10S, R90W, 6th P.M.



LINE TABLE		
LINE	DIRECTION	LENGTH
L1	N29°35'45\"W	276.47'
L2	N17°53'44\"W	473.64'
L3	N62°48'00\"W	2059.38'
L4	N59°01'07\"W	2295.71'
L5	N52°19'14\"W	2670.72'

NOTE:
THE PROPOSED TARGET BOTTOM HOLE FOR
THIS WELL IS LOCATED IN THE NW 1/4 SW
1/4 OF SECTION 18, T10S, R90W, 6th P.M. AT
1871' FSL 601' FWL. IT BEARS N181°11'W
12129.91' FROM THE PROPOSED WELLHEAD.



NOTE:
• Distances referenced on plat to section lines are perpendicular.

NAD 83 (SURFACE LOCATION)	NAD 83 (KICK OFF POINT)	NAD 83 (LANDING POINT)	NAD 83 (TARGET BOTTOM HOLE)
LATITUDE = 39°09'25.24\" (39.157012)	LATITUDE = 39°09'27.62\" (39.157672)	LATITUDE = 39°09'32.07\" (39.158909)	LATITUDE = 39°11'19.09\" (39.188635)
LONGITUDE = 107°28'37.98\" (107.477215)	LONGITUDE = 107°28'39.71\" (107.477697)	LONGITUDE = 107°28'41.56\" (107.478211)	LONGITUDE = 107°29'26.09\" (107.490581)
NAD 27 (SURFACE LOCATION)	NAD 27 (KICK OFF POINT)	NAD 27 (LANDING POINT)	NAD 27 (TARGET BOTTOM HOLE)
LATITUDE = 39°09'25.30\" (39.157029)	LATITUDE = 39°09'27.68\" (39.157688)	LATITUDE = 39°09'32.13\" (39.158925)	LATITUDE = 39°11'19.15\" (39.188652)
LONGITUDE = 107°28'35.78\" (107.476606)	LONGITUDE = 107°28'37.51\" (107.477087)	LONGITUDE = 107°28'39.36\" (107.477601)	LONGITUDE = 107°29'23.89\" (107.489971)
UTM NAD 27 (ZONE 13)	UTM NAD 27 (ZONE 13)	UTM NAD 27 (ZONE 13)	UTM NAD 27 (ZONE 13)
N: 14228697.30 E: 938325.05	N: 14228941.24 E: 938195.06	N: 14229395.63 E: 938061.76	N: 14240316.83 E: 934852.07

BASIS OF BEARINGS
BEARINGS ARE A BASED ASSUMPTION THAT THE SOUTH LINE OF THE SOUTH 1/2 OF SECTION 30 BEARS N89°53'38\"W. MONUMENTS DESCRIBED HEREON.

BASIS OF ELEVATION
SPOT ELEVATION LOCATED IN THE NE 1/4 OF SECTION 9, T11S, R90W, 6th P.M. TAKEN FROM THE BULL MOUNTAIN QUADRANGLE, COLORADO, GUNNISON COUNTY, 7.5 MINUTE QUAD (TOPOGRAPHIC MAP) PUBLISHED BY THE UNITED STATES DEPARTMENT OF THE INTERIOR, GEOLOGICAL SURVEY. SAID ELEVATION IS MARKED AS BEING 7487 FEET.

CERTIFICATE OF SURVEY
THIS IS TO CERTIFY THAT THE ABOVE PLAT WAS PREPARED AND THE LOCATION AS SHOWN WAS STAKED ON THE GROUND FROM FIELD MEASUREMENTS OF ACTUAL SURVEYS MADE BY ME OR UNDER MY SUPERVISION AND THAT THE SAME ARE TRUE AND CORRECT TO THE BEST OF MY KNOWLEDGE AND BELIEF.
REGISTERED PROFESSIONAL SURVEYOR
REGISTRATION NO. 1008160
STATE OF COLORADO
Hansel M. Anderson