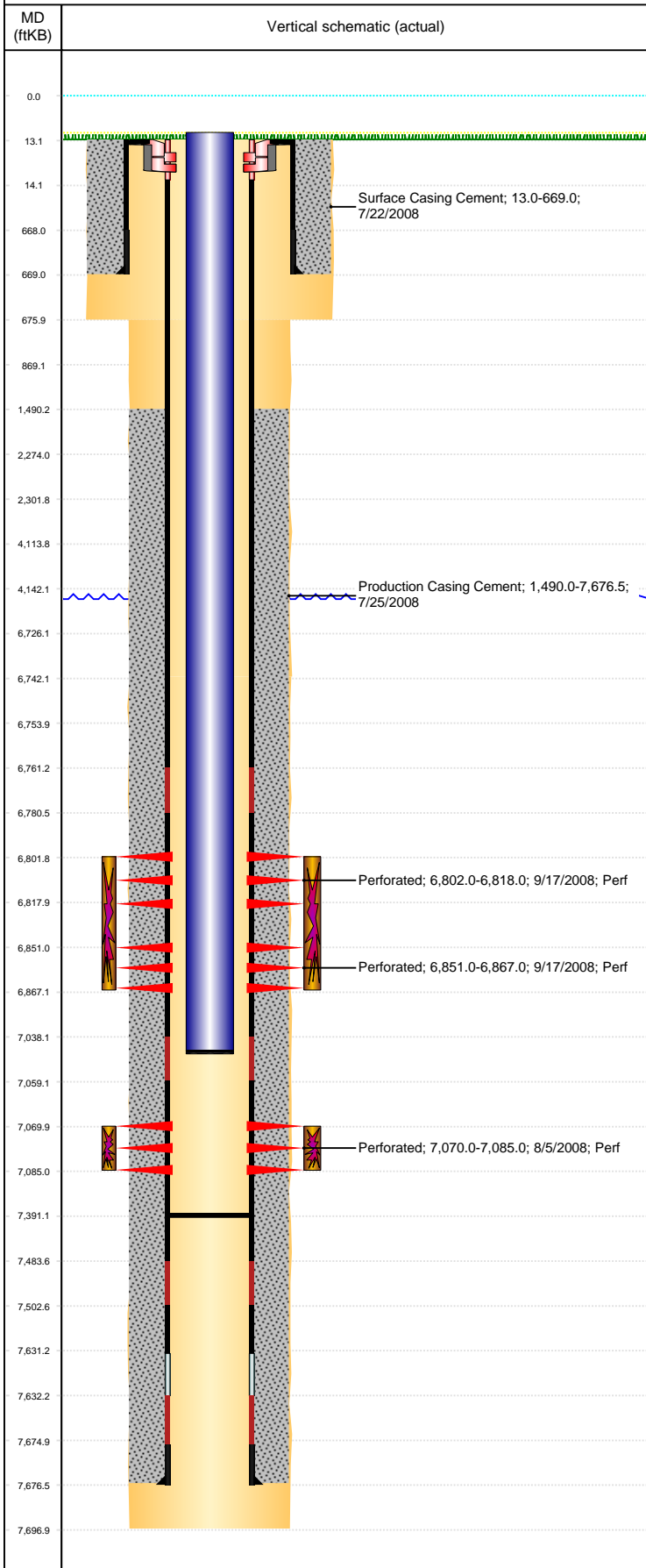


Well Name: DECHANT D07-32

VERTICAL, ORIGINAL HOLE, 5/28/2021 4:00:11 PM



Well Header									
API 05-123-26911			Business Unit DJ BASIN			District 15		Well Config VERTICAL	
KB - GL / MSL (ft... 13.00		Spud Date 7/22/2008		P & A Date		Well Production Status PR			SoRT No
Comment 318A.e. LOCATION									
Surface Location (Congressional)									
Qtr 3 NW	Qtr 4 SW	Section 7	Twنشp 3	Twنشp... N	Range 64	Rng E/... W	Actual Latitude (°) 40.23938682	Actual Longitude (°) -104.60188276	
Wellbore Sections									
Section Des			Size (in)			Act Top, MD (ftKB)		Act Btm, MD (ftKB)	
SURFACE			12 1/4			13		676	
PRODUCTION			7 7/8			676		6,742	
PRODUCTION			7 7/8			6742		7,697	
Casing Strings									
Csg Des			Run Date		OD (in)	Wt/Len (lb/ft)	Grade	Top, MD (ftKB)	MD (ftKB)
Surface			7/22/2008		8 5/8	24.00	J-55	13.0	669.0
Production			7/25/2008		4 1/2	11.60	M-80	0.0	7,676.5
Cement									
Des					Start Date		Top (ftKB)		Btm (ftKB)
Surface Casing Cement					7/22/2008		13.0		669.0
Production Casing Cement					7/25/2008		1,490.0		7,676.5
Zone Statuses									
Zone Name		Status Date	Status	Fluid Type	Job			Prod Method	
NIOBRARA		9/29/2008	PR		DRILLING/COMPLETION - ORIGINAL, 7/22/2008...				
CODELL		9/29/2008	PR		DRILLING/COMPLETION - ORIGINAL, 7/22/2008...				
Perforation Data									
Linked Zone			Bnch/Stg	Entered Shot Total	Top (ftKB)		Btm (ftKB)		Date
NIOBRARA, ORIGINAL HOLE			A	32	6,802.00		6,818.00		9/17/2008
NIOBRARA, ORIGINAL HOLE			B	32	6,851.00		6,867.00		9/17/2008
CODELL, ORIGINAL HOLE				60	7,070.00		7,085.00		8/5/2008
Stimulation Intervals									
Zone					Start Date		Top (ftKB)		Btm (ftKB)
NIOBRARA, ORIGINAL HOLE					9/17/2008		6,802.0		6,867.0
CODELL, ORIGINAL HOLE					9/17/2008		7,070.0		7,085.0
Other In Hole									
Run Date		Des			Make	OD (in)	Top (ftKB)	Btm (ftKB)	
Logs									
Date		Type					Top, MD (ftKB)		Btm, MD (ftKB)
7/25/2008		Caliper/Comp. Density/Neutron/GR/SP/ML					666.0		7,691.0
7/25/2008		DIL/GR/SP/Caliper					666.0		7,691.0
7/31/2008		CBL/CCL/GR					1,234.0		7,560.0
7/31/2008		GYRO					0.0		7,000.0
Plug Back Total Depths									
Date		Type			Com				Depth (ftKB)
12/9/2008		PLUG							6,914.0
12/10/2008		PLUG REMNANTS							7,391.0