

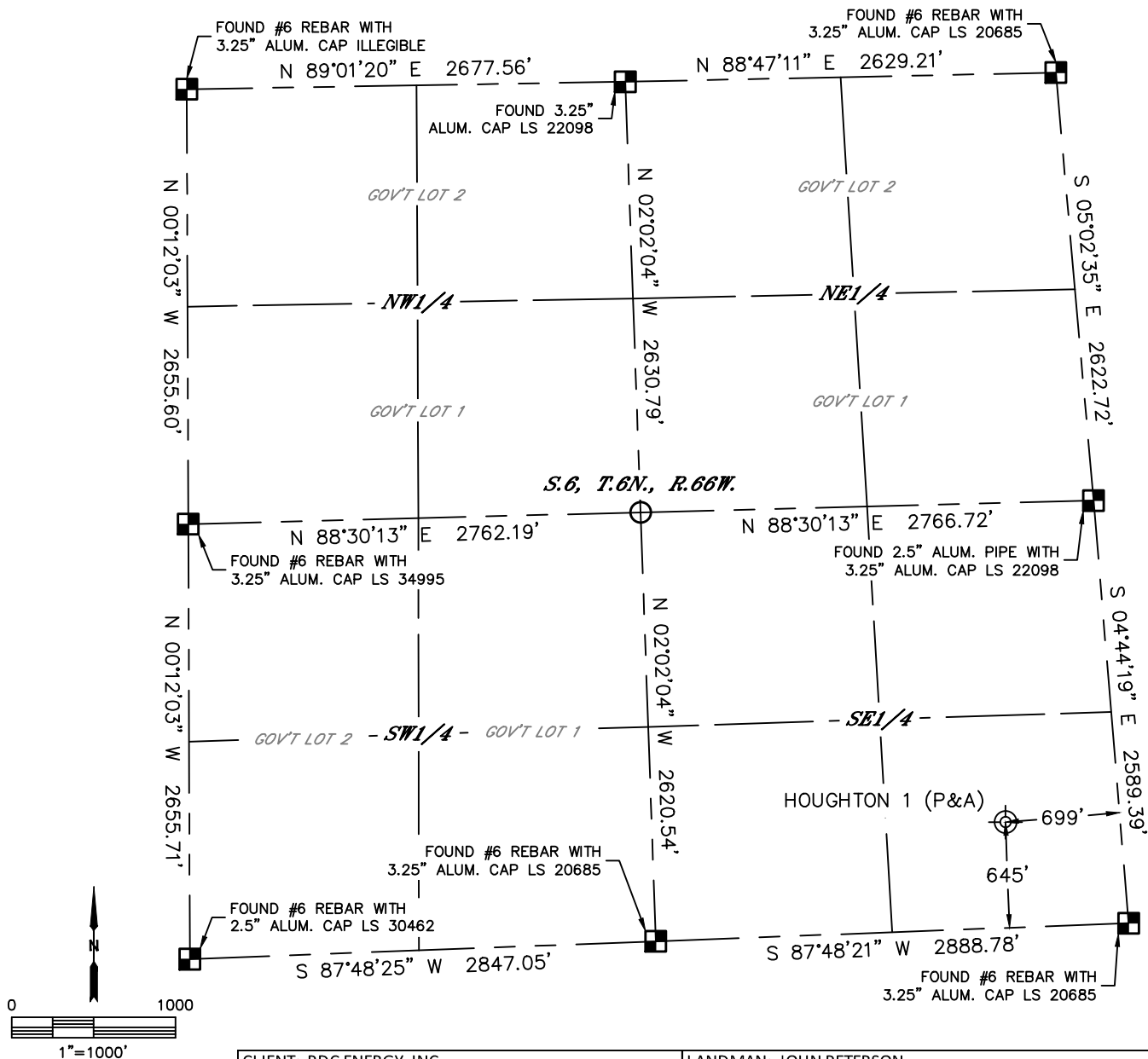


Lat40°, Inc. 6250 W. 10th Street, Unit 2, Greeley, CO 970-515-5294

PLUGGED AND ABANDONED WELL EXHIBIT

HOUGHTON 1

SECTION: 6
TOWNSHIP: 6N
RANGE: 66W
6TH. P.M.
WELD COUNTY, CO



CLIENT: PDC ENERGY, INC.						LANDMAN: JOHN PETERSON			
INSTRUMENT OPERATOR: CASEY KOHOUT						SURVEY DATE: 4/13/2021		SURFACE USE: OUTLOT	
SHL FOOTAGE			SHL LAT °		SHL LONG °	SHL PDOP	SHL ELEV (FT.)	SHL 1/4/1/4	SHL S-T-R
645	FSL	699	FEL	40.51109	-104.81437	1.7	4857	SESE	6-6-66
DESCRIPTION: CLIENT POTHOLED LOCATION AND FOUND A CAPPED WELL PIPE. THE LOCATION WAS THEN BACKFILLED AND MARKED WITH A STAKE.									

NOTE:

- 1) Bearings shown are Grid Bearings of the Colorado State Plane Coordinate System, North Zone, North American Datum 1983. The lineal dimensions as contained herein are based upon the "U.S. Survey Foot."
- 2) Distances to section lines measured at 90 degrees from said section lines.
- 3) Ground elevations are based on an observed GPS elevation (NAVD 1988 DATUM).
- 4) Latitude and Longitude shown are (NAD 83 DATUM).
- 5) Sectional data as shown hereon is from previous surveys and was not verified for this P&A Exhibit.
- 6) This map does not represent a boundary survey.

LEGEND

- = ALIQUOT MONUMENT AS DESCRIBED
- = CALCULATED POSITION
- ⊙ = ABANDONED WELL



SHEET 1 OF 2

Brian S. Rottinghaus—On behalf of Lat40°, Inc.
Colorado Licensed Professional Land Surveyor No. 38571
DATE: 4/19/2021
PROJECT#: 2021163



Lat40°, Inc. 6250 W. 10th Street, Unit 2, Greeley, CO 970-515-5294

PLUGGED AND ABANDONED WELL EXHIBIT

HOUGHTON 1

SECTION: 6
TOWNSHIP: 6N
RANGE: 66W
6TH. P.M.
WELD COUNTY, CO
DATE: 4/13/2021



VIEW NORTH



VIEW WEST



VIEW EAST



VIEW SOUTH