







39.80845, -108.64893, 6191.6ft, 53°  
05/21/2021 12:45:23 PM



**COLORADO**  
Oil & Gas Conservation  
Commission  
Department of Natural Resources

**Photo 2. Well.**

**Continental 1-8**

**API: 05-103-07908**

**Inspection: 701500830**





39.80858, -108.64871, 6186.4ft, 5°  
05/21/2021 12:46:00 PM



**COLORADO**  
Oil & Gas Conservation  
Commission  
Department of Natural Resources

**Photo 3. Pit.**

**Continental 1-8**

**API: 05-103-07908**

**Inspection: 701500830**



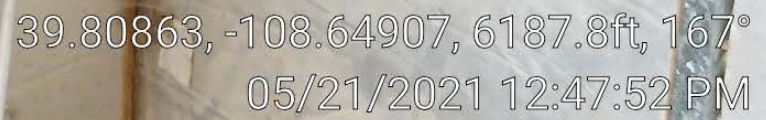


Meter S/N  
156344  
00001271839  
31 Operating

Station No. 93222 Continental 1-8  
 Station Name Fish Arrow 1-8  
 Producer Fish Arrow Windsor  
 Sec 8 Township 3S Range 100W  
 Diff 0-50" Temp Range 0-50°  
 Static 0-500' Absolute PSIA 11.6  
Tube 2.067

Date	Orifice Plate Size	Meter Test Date	Sample Date
6.20.5	0.250	6.20.5	6.20.5
6.16.6	0.250	6.16.6	6.16.6
10.12.7	0.250	10.12.7	10.12.7
4.15.9	.250	4.15.9	4.15.9
6.16.10	.250	6.16.10	6.16.10
6.3.11	.250	6.3.11	6.3.11
7.2.12	0.250 POP	7.2.12	7.2.12
6.12.13	0.25	6.12.13	6.12.13
8.14.14	0.250 8-14	8.14.14	8.14.14
6.19.15	0.250 8-14	6.19.15	6.19.15
6.29.17	0.250	6.29.17	6.29.17
6.6.18	0.250	6.6.18	6.6.18
6.17.19	0.250	6.17.19	6.17.19

39.80863, -108.64907, 6187.8ft, 215°  
 05/21/2021 12:47:46 PM







**COLORADO**  
Oil & Gas Conservation  
Commission  
Department of Natural Resources

Photo 6. Meter chart.

Continental 1-8

API: 05-103-07908

Inspection: 701500830