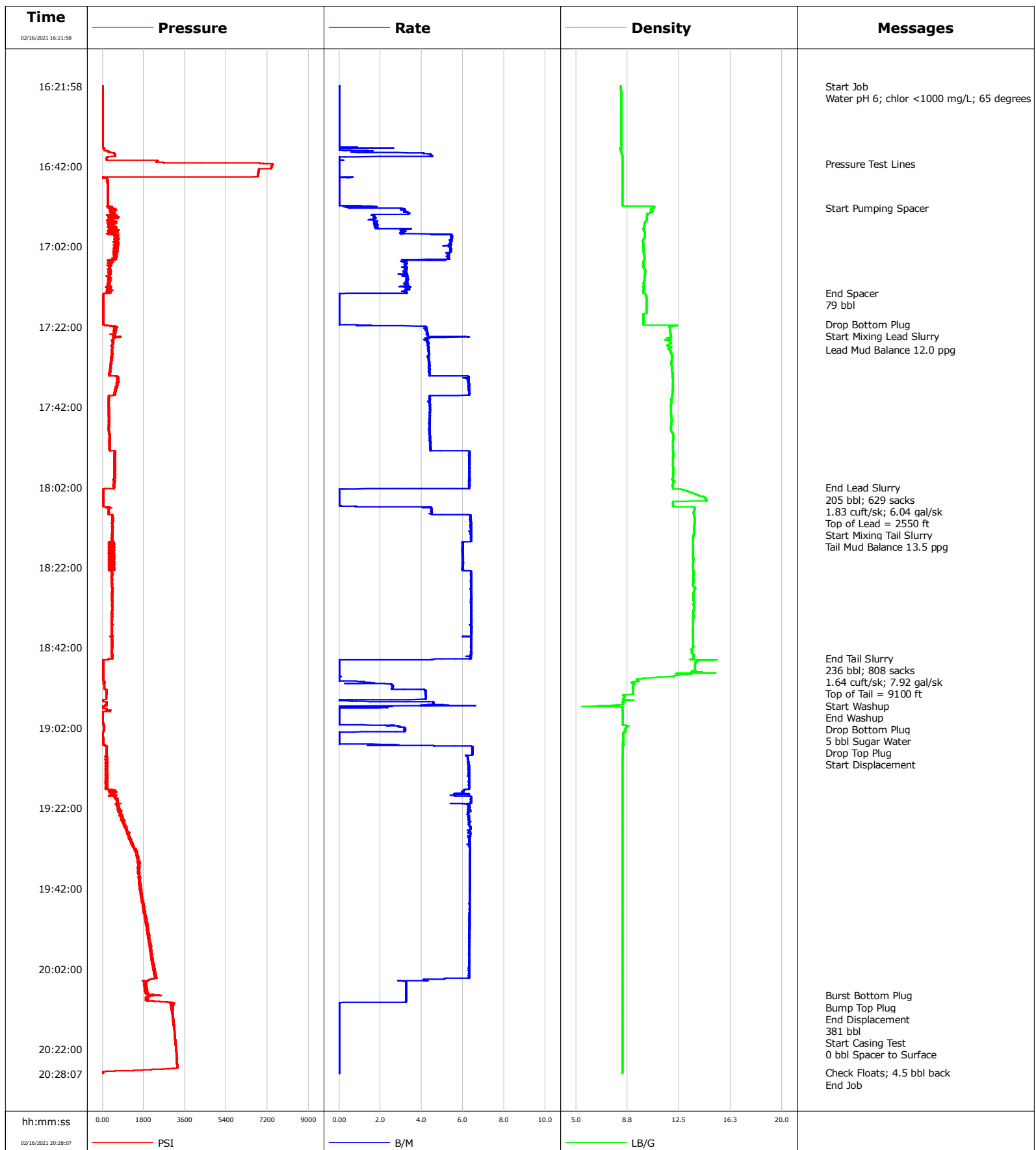


Well Nelson 35-15HZ
Field DJ
Engineer Grayland Balmer
Country United States

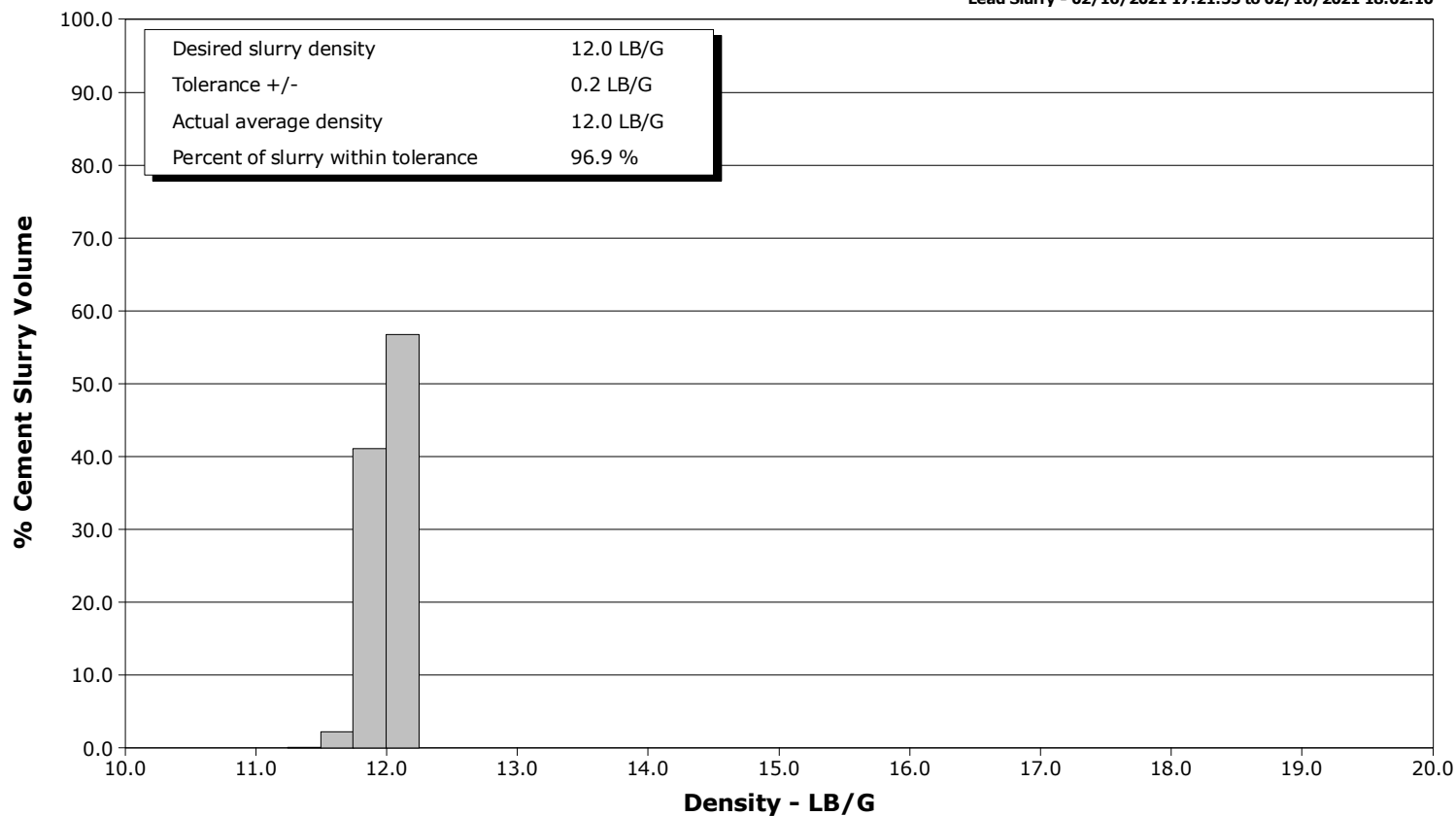
Client Oxy
SIR No. EAJ7-01706
Job Type Production
Job Date 02-16-2021



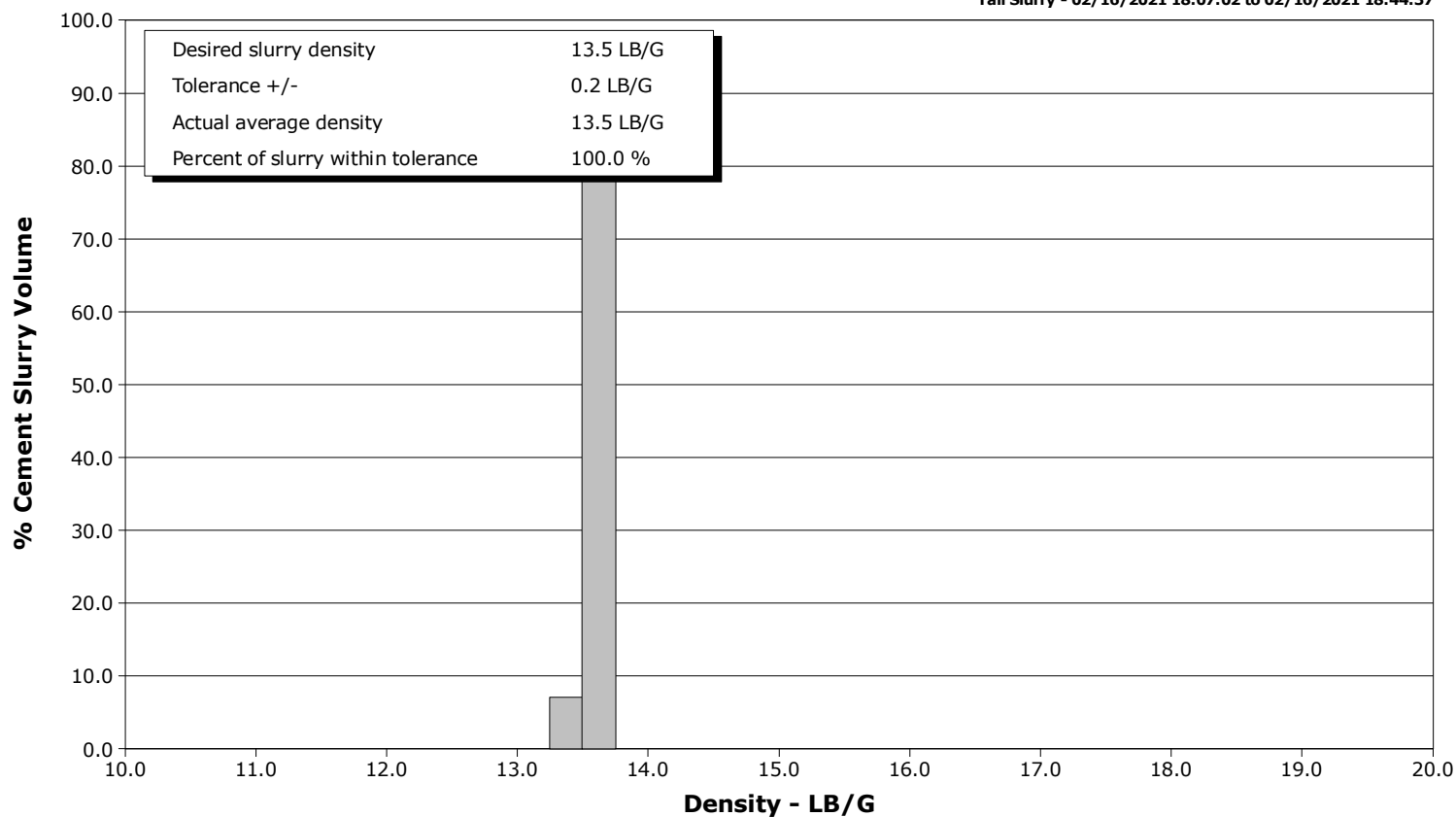
Well Nelson 35-15HZ
Field DJ
Engineer Grayland Balmer
Country United States

Client Oxy
SIR No. EAJ7-01706
Job Type Production
Job Date 02-16-2021

Lead Slurry - 02/16/2021 17:21:55 to 02/16/2021 18:02:10



Tail Slurry - 02/16/2021 18:07:02 to 02/16/2021 18:44:37



Cementing Service Report

				Customer Oxy			Job Number EAJ7-01706				
Well Nelson 35-15HZ 35-15HZ			Location (legal) PD461			Schlumberger Location Cheyenne			Job Start Feb/16/2021		
Field DJ		Formation Name/Type		Deviation deg		Bit Size in		Well MD 16446.0 ft		Well TVD 7576.0 ft	
County Weld		State/Province Colorado		BHP psi		BHST 230 degF		BHCT 230 degF		Pore Press. Gradient lb/gal	
Well Master 0066128235		API/UWI 05-123-51252-00-00									
Rig Name PD461		Drilled For Oil & Gas		Service Via Land		Casing/Liner					
						Depth, ft		Size, in		Weight, lb/ft	
										Grade	
										Thread	
Offshore Zone		Well Class New		Well Type Development		1892.0		9.6		36.0	
						16446.0		5.5		17.0	
										P110	
Drilling Fluid Type		Max. Density lb/gal		Plastic Viscosity cP		Tubing/Drill Pipe					
						T/D		Depth, ft		Size, in	
										Weight, lb/ft	
										Grade	
										Thread	
Service Line Cementing		Job Type Production									
Max. Allowed Tub. Press psi		Max. Allowed Ann. Press psi		WH Connection		Perforations/Open Hole					
						Top, ft		Bottom, ft		shot/ft	
										No. of Shots	
										Total Interval ft	
										Diameter in	
						Treat Down Casing		Displacement 382.0 bbl		Packer Type	
										Packer Depth ft	
						Tubing Vol. bbl		Casing Vol. 382.0 bbl		Annular Vol. 540.0 bbl	
										Openhole Vol. 450.0 bbl	
Casing/Tubing Secured <input type="checkbox"/>		1 Hole Vol. Circulated prior to Cement <input type="checkbox"/>				Casing Tools		Squeeze Job			
Lift Pressure psi						Shoe Type Float		Squeeze Type			
Pipe Rotated <input type="checkbox"/>		Pipe Reciprocated <input type="checkbox"/>				Shoe Depth ft		Tool Type			
No. Centralizers		Top Plugs		Bottom Plugs		Stage Tool Type		Tool Depth ft			
Cement Head Type Double						Stage Tool Depth ft		Tail Pipe Size in			
Job Scheduled For Feb/16/2021 10:00		Arrived on Location Feb/16/2021 10:00		Leave Location Feb/16/2021 20:00		Collar Type Float		Tail Pipe Depth ft			
						Collar Depth ft		Sqz. Total Vol. bbl			
Date	Time 24-hr clock	PRESSURE PSI		RATE B/M		DENSITY LB/G		Message			
02/16/2021	16:21:58	9		0.0		8.27		Started Acquisition			
02/16/2021	16:22:00	9		0.0		8.27		Start Job			
02/16/2021	16:22:03	10		0.0		8.27		Water pH 6; chlor <1000 mg/L; 65 degrees			
02/16/2021	16:22:33	9		0.0		8.27					
02/16/2021	16:23:08	11		0.0		8.29					
02/16/2021	16:23:43	9		0.0		8.30					
02/16/2021	16:24:18	9		0.0		8.30					
02/16/2021	16:24:53	9		0.0		8.30					
02/16/2021	16:25:28	10		0.0		8.30					
02/16/2021	16:26:03	9		0.0		8.31					
02/16/2021	16:27:13	9		0.0		8.31					
02/16/2021	16:27:48	10		0.0		8.31					
02/16/2021	16:28:23	11		0.0		8.31					
02/16/2021	16:28:58	11		0.0		8.31					
02/16/2021	16:29:33	11		0.0		8.31					
02/16/2021	16:30:08	10		0.0		8.31					
02/16/2021	16:30:43	12		0.0		8.31					
02/16/2021	16:31:18	11		0.0		8.31					
02/16/2021	16:31:53	12		0.0		8.31					
02/16/2021	16:32:28	11		0.0		8.31					
02/16/2021	16:33:03	12		0.0		8.31					

Well			Field	Job Start	Customer	Job Number
Nelson 35-15HZ 35-15HZ			DJ	Feb/16/2021	Oxy	EAJ7-01706
Date	Time 24-hr clock	PRESSURE PSI	RATE B/M	DENSITY LB/G	Message	
02/16/2021	16:34:13	10	0.0	8.31		
02/16/2021	16:34:48	12	0.0	8.31		
02/16/2021	16:35:23	13	0.0	8.31		
02/16/2021	16:35:58	9	0.0	8.31		
02/16/2021	16:36:33	9	0.0	8.31		
02/16/2021	16:37:08	7	0.0	8.31		
02/16/2021	16:37:43	78	0.0	8.28		
02/16/2021	16:38:18	283	1.4	8.29		
02/16/2021	16:38:53	518	4.2	8.34		
02/16/2021	16:39:28	544	4.5	8.36		
02/16/2021	16:40:03	181	0.0	8.37		
02/16/2021	16:40:38	2412	0.0	8.36		
02/16/2021	16:41:13	6865	0.0	8.36		
02/16/2021	16:41:27	7435	0.0	8.36	Pressure Test Lines	
02/16/2021	16:41:48	7397	0.0	8.36		
02/16/2021	16:42:23	7365	0.0	8.36		
02/16/2021	16:42:58	6816	0.0	8.36		
02/16/2021	16:44:08	6782	0.0	8.37		
02/16/2021	16:44:43	15	0.5	8.37		
02/16/2021	16:45:18	213	0.0	8.36		
02/16/2021	16:45:53	214	0.0	8.36		
02/16/2021	16:46:28	215	0.0	8.36		
02/16/2021	16:47:03	217	0.0	8.37		
02/16/2021	16:47:38	218	0.0	8.37		
02/16/2021	16:48:13	217	0.0	8.37		
02/16/2021	16:48:48	219	0.0	8.36		
02/16/2021	16:49:23	220	0.0	8.36		
02/16/2021	16:49:58	216	0.0	8.36		
02/16/2021	16:50:33	217	0.0	8.36		
02/16/2021	16:51:08	219	0.0	8.36		
02/16/2021	16:51:43	219	0.0	8.37		
02/16/2021	16:52:18	303	0.5	10.64		
02/16/2021	16:52:20	273	0.5	10.64	Start Pumping Spacer	
02/16/2021	16:52:53	613	3.0	10.45		
02/16/2021	16:53:28	301	3.2	10.50		
02/16/2021	16:54:03	416	1.9	10.20		
02/16/2021	16:54:38	324	1.7	10.15		
02/16/2021	16:55:13	397	1.7	10.16		
02/16/2021	16:55:48	417	1.8	10.08		
02/16/2021	16:56:23	366	1.7	9.98		
02/16/2021	16:56:58	296	1.9	9.96		
02/16/2021	16:57:33	296	1.9	9.92		
02/16/2021	16:58:08	491	3.0	9.95		
02/16/2021	16:58:43	354	3.0	10.03		
02/16/2021	16:59:18	499	5.4	10.01		
02/16/2021	16:59:53	566	5.4	9.98		
02/16/2021	17:00:28	645	5.4	9.89		
02/16/2021	17:01:03	638	5.4	9.89		
02/16/2021	17:01:38	604	5.4	9.91		
02/16/2021	17:02:13	564	5.4	9.91		
02/16/2021	17:02:48	564	5.4	9.92		
02/16/2021	17:03:23	491	5.4	9.94		
02/16/2021	17:03:58	629	5.3	9.94		
02/16/2021	17:04:33	561	5.3	9.97		

Well			Field	Job Start	Customer	Job Number
Nelson 35-15HZ 35-15HZ			DJ	Feb/16/2021	Oxy	EAJ7-01706
Date	Time 24-hr clock	PRESSURE PSI	RATE B/M	DENSITY LB/G	Message	
02/16/2021	17:05:43	278	3.2	9.92		
02/16/2021	17:06:18	323	3.3	9.90		
02/16/2021	17:06:53	255	3.3	9.91		
02/16/2021	17:07:28	331	3.3	9.96		
02/16/2021	17:08:03	317	3.2	10.05		
02/16/2021	17:08:38	257	3.3	10.03		
02/16/2021	17:09:13	274	3.3	10.01		
02/16/2021	17:09:48	300	3.3	9.98		
02/16/2021	17:10:23	306	3.3	9.98		
02/16/2021	17:10:58	246	3.3	9.96		
02/16/2021	17:11:33	316	3.3	9.93		
02/16/2021	17:12:08	350	3.2	9.90		
02/16/2021	17:12:43	235	3.4	9.97		
02/16/2021	17:13:18	215	3.2	9.91		
02/16/2021	17:13:41	293	2.7	9.93	End Spacer	
02/16/2021	17:13:43	58	0.4	9.92	79 bbl	
02/16/2021	17:13:53	44	0.0	10.06		
02/16/2021	17:14:28	29	0.0	10.11		
02/16/2021	17:15:03	28	0.0	10.12		
02/16/2021	17:15:38	28	0.0	10.12		
02/16/2021	17:16:13	30	0.0	10.12		
02/16/2021	17:16:48	31	0.0	10.12		
02/16/2021	17:17:23	33	0.0	10.13		
02/16/2021	17:17:58	36	0.0	10.13		
02/16/2021	17:18:33	38	0.0	10.13		
02/16/2021	17:19:08	39	0.0	9.91		
02/16/2021	17:19:43	39	0.0	9.91		
02/16/2021	17:20:53	41	0.0	9.91		
02/16/2021	17:21:20	41	0.0	9.92	Drop Bottom Plug	
02/16/2021	17:21:28	41	0.0	9.92		
02/16/2021	17:21:55	547	4.2	11.82	Start Mixing Lead Slurry	
02/16/2021	17:22:03	655	4.2	11.81		
02/16/2021	17:22:38	595	4.2	11.84		
02/16/2021	17:23:13	500	4.3	11.85		
02/16/2021	17:23:48	488	4.3	11.87		
02/16/2021	17:24:23	551	4.3	11.89		
02/16/2021	17:24:58	498	4.3	11.88		
02/16/2021	17:25:33	444	4.2	11.81		
02/16/2021	17:26:08	478	4.3	11.86		
02/16/2021	17:26:43	419	4.3	11.64		
02/16/2021	17:27:18	424	4.3	11.89		
02/16/2021	17:27:45	409	4.3	11.83	Lead Mud Balance 12.0 ppg	
02/16/2021	17:27:53	408	4.3	11.84		
02/16/2021	17:28:28	424	4.4	11.92		
02/16/2021	17:29:03	412	4.3	11.98		
02/16/2021	17:29:38	422	4.3	12.00		
02/16/2021	17:30:13	381	4.3	11.98		
02/16/2021	17:30:48	370	4.4	11.96		
02/16/2021	17:31:23	352	4.4	11.95		
02/16/2021	17:31:58	348	4.4	11.98		
02/16/2021	17:32:33	333	4.4	11.99		
02/16/2021	17:33:08	335	4.4	12.00		
02/16/2021	17:33:43	331	4.4	12.01		
02/16/2021	17:34:18	658	6.1	12.03		

Well			Field	Job Start	Customer	Job Number
Nelson 35-15HZ 35-15HZ			DJ	Feb/16/2021	Oxy	EAJ7-01706
Date	Time 24-hr clock	PRESSURE PSI	RATE B/M	DENSITY LB/G	Message	
02/16/2021	17:35:28	682	6.3	12.05		
02/16/2021	17:36:03	639	6.3	12.06		
02/16/2021	17:36:38	654	6.3	12.07		
02/16/2021	17:37:13	625	6.3	12.04		
02/16/2021	17:37:48	537	6.3	12.04		
02/16/2021	17:38:23	585	6.3	12.02		
02/16/2021	17:38:58	558	6.3	12.01		
02/16/2021	17:39:33	279	4.4	11.98		
02/16/2021	17:40:08	271	4.4	11.95		
02/16/2021	17:40:43	269	4.4	11.92		
02/16/2021	17:41:18	272	4.4	11.90		
02/16/2021	17:41:53	283	4.4	11.90		
02/16/2021	17:42:28	278	4.4	11.91		
02/16/2021	17:43:03	276	4.4	11.90		
02/16/2021	17:43:38	267	4.4	11.90		
02/16/2021	17:44:13	278	4.4	11.94		
02/16/2021	17:44:48	290	4.4	11.96		
02/16/2021	17:45:23	289	4.4	11.97		
02/16/2021	17:45:58	292	4.4	11.96		
02/16/2021	17:46:33	281	4.4	11.93		
02/16/2021	17:47:08	267	4.4	11.91		
02/16/2021	17:47:43	261	4.4	11.91		
02/16/2021	17:48:18	283	4.4	11.99		
02/16/2021	17:48:53	304	4.4	12.07		
02/16/2021	17:50:03	311	4.4	12.08		
02/16/2021	17:50:38	312	4.4	12.06		
02/16/2021	17:51:13	320	4.4	12.07		
02/16/2021	17:51:48	300	4.4	12.06		
02/16/2021	17:52:23	306	4.4	12.06		
02/16/2021	17:52:58	573	6.3	12.07		
02/16/2021	17:53:33	522	6.3	12.08		
02/16/2021	17:54:08	505	6.3	12.07		
02/16/2021	17:54:43	559	6.3	12.07		
02/16/2021	17:55:18	548	6.3	12.05		
02/16/2021	17:55:53	515	6.3	12.07		
02/16/2021	17:56:28	529	6.3	12.07		
02/16/2021	17:57:03	533	6.3	12.07		
02/16/2021	17:57:38	515	6.3	12.08		
02/16/2021	17:58:13	516	6.3	12.08		
02/16/2021	17:58:48	556	6.3	12.06		
02/16/2021	17:59:23	558	6.3	12.06		
02/16/2021	17:59:58	480	6.3	12.03		
02/16/2021	18:00:33	522	6.3	12.12		
02/16/2021	18:01:08	536	6.3	12.07		
02/16/2021	18:01:43	494	6.3	12.04		
02/16/2021	18:02:10	474	6.3	12.05	End Lead Slurry	
02/16/2021	18:02:18	507	6.3	12.05		
02/16/2021	18:02:53	23	0.0	13.00		
02/16/2021	18:03:16	24	0.0	13.35	205 bbl; 629 sacks	
02/16/2021	18:03:18	24	0.0	13.37	1.83 cuft/sk; 6.04 gal/sk	
02/16/2021	18:03:21	24	0.0	13.40	Top of Lead = 2550 ft	
02/16/2021	18:03:28	25	0.0	13.52		
02/16/2021	18:04:03	24	0.0	13.90		
02/16/2021	18:04:38	25	0.0	14.39		

Well Nelson 35-15HZ 35-15HZ			Field DJ		Job Start Feb/16/2021		Customer Oxy		Job Number EAJ7-01706	
Date	Time 24-hr clock	PRESSURE PSI		RATE B/M		DENSITY LB/G		Message		
02/16/2021	18:05:48	26		0.0		12.05				
02/16/2021	18:06:23	25		0.0		12.05				
02/16/2021	18:06:58	297		4.5		13.62				
02/16/2021	18:07:02	196		4.3		13.64		Start Mixing Tail Slurry		
02/16/2021	18:07:33	264		4.5		13.61				
02/16/2021	18:08:08	255		4.5		13.57				
02/16/2021	18:08:43	286		4.5		13.58				
02/16/2021	18:09:18	465		6.4		13.60				
02/16/2021	18:09:53	428		6.4		13.62				
02/16/2021	18:10:28	441		6.4		13.62				
02/16/2021	18:11:03	433		6.4		13.61				
02/16/2021	18:11:38	431		6.4		13.60				
02/16/2021	18:12:00	434		6.4		13.60		Tail Mud Balance 13.5 ppg		
02/16/2021	18:12:13	411		6.4		13.59				
02/16/2021	18:12:48	451		6.4		13.58				
02/16/2021	18:13:23	461		6.4		13.58				
02/16/2021	18:13:58	434		6.4		13.57				
02/16/2021	18:14:33	426		6.4		13.53				
02/16/2021	18:15:08	435		6.4		13.52				
02/16/2021	18:15:43	317		6.0		13.52				
02/16/2021	18:16:18	267		6.0		13.52				
02/16/2021	18:16:53	266		6.0		13.52				
02/16/2021	18:17:28	369		6.0		13.53				
02/16/2021	18:18:03	401		6.0		13.52				
02/16/2021	18:18:38	532		6.0		13.53				
02/16/2021	18:19:13	446		6.0		13.53				
02/16/2021	18:19:48	354		6.0		13.54				
02/16/2021	18:20:23	306		6.0		13.54				
02/16/2021	18:20:58	289		6.0		13.53				
02/16/2021	18:21:33	309		6.0		13.53				
02/16/2021	18:22:08	352		6.0		13.53				
02/16/2021	18:22:43	492		6.0		13.54				
02/16/2021	18:23:18	434		6.4		13.56				
02/16/2021	18:23:53	395		6.4		13.56				
02/16/2021	18:24:28	426		6.4		13.56				
02/16/2021	18:25:03	442		6.4		13.56				
02/16/2021	18:25:38	421		6.4		13.54				
02/16/2021	18:26:48	427		6.4		13.59				
02/16/2021	18:27:23	456		6.4		13.66				
02/16/2021	18:27:58	412		6.4		13.58				
02/16/2021	18:28:33	411		6.4		13.56				
02/16/2021	18:29:08	431		6.4		13.55				
02/16/2021	18:29:43	435		6.4		13.55				
02/16/2021	18:30:18	440		6.4		13.57				
02/16/2021	18:30:53	431		6.4		13.57				
02/16/2021	18:31:28	421		6.4		13.57				
02/16/2021	18:32:03	428		6.4		13.60				
02/16/2021	18:32:38	423		6.4		13.57				
02/16/2021	18:33:13	429		6.4		13.53				
02/16/2021	18:33:48	425		6.4		13.53				
02/16/2021	18:34:23	407		6.4		13.56				
02/16/2021	18:34:58	419		6.4		13.52				
02/16/2021	18:35:33	429		6.4		13.52				
02/16/2021	18:36:08	414		6.4		13.52				

Well			Field	Job Start		Customer	Job Number
Nelson 35-15HZ 35-15HZ			DJ	Feb/16/2021		Oxy	EAJ7-01706
Date	Time 24-hr clock	PRESSURE PSI	RATE B/M	DENSITY LB/G	Message		
02/16/2021	18:37:18	413	6.4	13.50			
02/16/2021	18:37:53	405	6.4	13.50			
02/16/2021	18:38:28	405	6.4	13.51			
02/16/2021	18:39:03	439	6.4	13.51			
02/16/2021	18:39:38	439	6.4	13.50			
02/16/2021	18:40:13	415	6.4	13.52			
02/16/2021	18:40:48	434	6.4	13.53			
02/16/2021	18:41:23	431	6.4	13.52			
02/16/2021	18:41:58	419	6.4	13.52			
02/16/2021	18:42:33	416	6.4	13.43			
02/16/2021	18:43:08	425	6.4	13.43			
02/16/2021	18:43:43	449	6.4	13.56			
02/16/2021	18:44:18	420	6.4	13.56			
02/16/2021	18:44:37	417	6.4	13.55	End Tail Slurry		
02/16/2021	18:44:53	252	4.5	13.35			
02/16/2021	18:44:58	237	4.5	13.34	236 bbl; 808 sacks		
02/16/2021	18:45:00	243	3.8	13.35	1.64 cuft/sk; 7.92 gal/sk		
02/16/2021	18:45:02	45	0.9	13.71	Top of Tail = 9100 ft		
02/16/2021	18:45:16	27	0.0	13.86	Start Washup		
02/16/2021	18:45:28	27	0.0	13.71			
02/16/2021	18:46:03	27	0.0	13.67			
02/16/2021	18:46:38	34	0.0	13.66			
02/16/2021	18:47:13	31	0.0	13.66			
02/16/2021	18:47:48	32	0.0	13.51			
02/16/2021	18:48:23	31	0.0	12.49			
02/16/2021	18:48:58	34	0.0	12.16			
02/16/2021	18:49:33	31	0.0	10.34			
02/16/2021	18:50:08	33	0.0	9.48			
02/16/2021	18:50:43	87	1.5	9.09			
02/16/2021	18:51:18	78	2.5	9.18			
02/16/2021	18:51:53	79	2.6	9.17			
02/16/2021	18:52:28	177	4.2	9.17			
02/16/2021	18:53:03	178	4.2	9.16			
02/16/2021	18:53:38	168	4.2	9.10			
02/16/2021	18:54:13	161	4.2	8.52			
02/16/2021	18:54:48	170	4.2	8.46			
02/16/2021	18:55:58	186	4.6	8.44			
02/16/2021	18:56:33	39	1.4	7.52			
02/16/2021	18:57:08	26	0.0	8.38			
02/16/2021	18:57:40	333	0.0	8.39	End Washup		
02/16/2021	18:57:43	284	0.0	8.40			
02/16/2021	18:58:18	17	0.0	8.41			
02/16/2021	18:58:53	18	0.0	8.41			
02/16/2021	18:59:28	16	0.0	8.41			
02/16/2021	19:00:03	15	0.0	8.40			
02/16/2021	19:00:38	16	0.0	8.40			
02/16/2021	19:01:13	27	0.0	8.40			
02/16/2021	19:01:20	96	2.5	8.40	Drop Bottom Plug		
02/16/2021	19:01:22	80	2.7	8.64	5 bbl Sugar Water		
02/16/2021	19:01:48	74	2.9	8.68			
02/16/2021	19:02:23	56	3.2	8.60			
02/16/2021	19:02:58	23	1.9	8.59			
02/16/2021	19:03:33	16	0.0	8.44			
02/16/2021	19:04:08	20	0.0	8.44			

Well Nelson 35-15HZ 35-15HZ			Field DJ		Job Start Feb/16/2021		Customer Oxy		Job Number EAJ7-01706	
Date	Time 24-hr clock	PRESSURE PSI		RATE B/M		DENSITY LB/G		Message		
02/16/2021	19:05:18	25		0.0		8.44				
02/16/2021	19:05:53	27		0.0		8.44				
02/16/2021	19:06:19	44		1.5		8.44		Drop Top Plug		
02/16/2021	19:06:21	161		2.6		8.44		Start Displacement		
02/16/2021	19:06:28	156		4.6		8.42				
02/16/2021	19:07:03	174		6.5		8.41				
02/16/2021	19:07:38	186		6.5		8.41				
02/16/2021	19:08:13	186		6.5		8.40				
02/16/2021	19:08:48	175		6.4		8.40				
02/16/2021	19:09:23	139		6.2		8.40				
02/16/2021	19:09:58	141		6.3		8.39				
02/16/2021	19:10:33	131		6.3		8.39				
02/16/2021	19:11:08	157		6.3		8.39				
02/16/2021	19:11:43	163		6.3		8.38				
02/16/2021	19:12:18	218		6.3		8.39				
02/16/2021	19:12:53	195		6.3		8.39				
02/16/2021	19:13:28	208		6.3		8.38				
02/16/2021	19:14:03	183		6.3		8.38				
02/16/2021	19:14:38	133		6.3		8.38				
02/16/2021	19:15:13	141		6.3		8.38				
02/16/2021	19:15:48	167		6.3		8.38				
02/16/2021	19:16:23	191		6.3		8.38				
02/16/2021	19:16:58	230		6.3		8.38				
02/16/2021	19:17:33	587		6.1		8.38				
02/16/2021	19:18:08	547		6.0		8.38				
02/16/2021	19:18:43	498		5.4		8.38				
02/16/2021	19:19:18	603		6.4		8.38				
02/16/2021	19:19:53	656		6.4		8.38				
02/16/2021	19:20:28	660		6.4		8.38				
02/16/2021	19:21:03	660		6.3		8.38				
02/16/2021	19:21:38	720		6.3		8.38				
02/16/2021	19:22:13	664		6.3		8.38				
02/16/2021	19:22:48	725		6.4		8.38				
02/16/2021	19:23:23	795		6.3		8.38				
02/16/2021	19:23:58	863		6.3		8.38				
02/16/2021	19:24:33	828		6.3		8.38				
02/16/2021	19:25:08	961		6.3		8.37				
02/16/2021	19:25:43	985		6.3		8.37				
02/16/2021	19:26:18	958		6.3		8.37				
02/16/2021	19:26:53	980		6.4		8.37				
02/16/2021	19:27:28	1029		6.2		8.37				
02/16/2021	19:28:03	1157		6.3		8.37				
02/16/2021	19:28:38	1100		6.4		8.37				
02/16/2021	19:29:13	1140		6.2		8.37				
02/16/2021	19:29:48	1257		6.3		8.37				
02/16/2021	19:30:23	1259		6.3		8.37				
02/16/2021	19:30:58	1311		6.3		8.37				
02/16/2021	19:31:33	1372		6.3		8.37				
02/16/2021	19:32:43	1428		6.3		8.37				
02/16/2021	19:33:18	1476		6.3		8.37				
02/16/2021	19:33:53	1565		6.3		8.37				
02/16/2021	19:34:28	1560		6.3		8.37				
02/16/2021	19:35:03	1561		6.4		8.37				
02/16/2021	19:35:38	1610		6.3		8.37				

Well			Field	Job Start	Customer	Job Number
Nelson 35-15HZ 35-15HZ			DJ	Feb/16/2021	Oxy	EAJ7-01706
Date	Time 24-hr clock	PRESSURE PSI	RATE B/M	DENSITY LB/G	Message	
02/16/2021	19:36:48	1541	6.3	8.37		
02/16/2021	19:37:23	1606	6.3	8.37		
02/16/2021	19:37:58	1617	6.3	8.37		
02/16/2021	19:38:33	1560	6.3	8.37		
02/16/2021	19:39:08	1634	6.3	8.37		
02/16/2021	19:39:43	1636	6.3	8.37		
02/16/2021	19:40:18	1606	6.3	8.37		
02/16/2021	19:40:53	1616	6.3	8.37		
02/16/2021	19:41:28	1680	6.3	8.37		
02/16/2021	19:42:03	1696	6.3	8.37		
02/16/2021	19:42:38	1647	6.3	8.37		
02/16/2021	19:43:13	1693	6.3	8.37		
02/16/2021	19:43:48	1738	6.3	8.37		
02/16/2021	19:44:23	1732	6.3	8.37		
02/16/2021	19:44:58	1733	6.3	8.37		
02/16/2021	19:45:33	1799	6.3	8.37		
02/16/2021	19:46:08	1750	6.3	8.37		
02/16/2021	19:46:43	1784	6.3	8.37		
02/16/2021	19:47:18	1803	6.3	8.37		
02/16/2021	19:47:53	1876	6.3	8.37		
02/16/2021	19:48:28	1881	6.3	8.37		
02/16/2021	19:49:03	1845	6.3	8.37		
02/16/2021	19:49:38	1937	6.3	8.37		
02/16/2021	19:50:13	1897	6.3	8.37		
02/16/2021	19:50:48	1923	6.3	8.37		
02/16/2021	19:51:23	1970	6.3	8.37		
02/16/2021	19:51:58	1996	6.3	8.37		
02/16/2021	19:52:33	1946	6.3	8.37		
02/16/2021	19:53:08	1954	6.3	8.37		
02/16/2021	19:53:43	2041	6.3	8.37		
02/16/2021	19:54:18	2030	6.3	8.37		
02/16/2021	19:54:53	2029	6.3	8.37		
02/16/2021	19:55:28	2098	6.3	8.37		
02/16/2021	19:56:03	2103	6.3	8.37		
02/16/2021	19:56:38	2065	6.3	8.37		
02/16/2021	19:57:13	2076	6.3	8.37		
02/16/2021	19:57:48	2159	6.3	8.37		
02/16/2021	19:58:23	2163	6.3	8.37		
02/16/2021	19:58:58	2110	6.3	8.37		
02/16/2021	19:59:33	2134	6.3	8.37		
02/16/2021	20:00:08	2188	6.3	8.37		
02/16/2021	20:00:43	2192	6.3	8.37		
02/16/2021	20:01:53	2291	6.3	8.37		
02/16/2021	20:02:28	2311	6.3	8.37		
02/16/2021	20:03:03	2247	6.3	8.37		
02/16/2021	20:03:38	2272	6.3	8.37		
02/16/2021	20:04:13	2350	6.3	8.37		
02/16/2021	20:04:48	2027	4.1	8.37		
02/16/2021	20:05:23	1875	3.3	8.37		
02/16/2021	20:05:58	1840	3.3	8.37		
02/16/2021	20:06:33	1958	3.3	8.37		
02/16/2021	20:07:08	1942	3.3	8.37		
02/16/2021	20:07:43	1842	3.3	8.38		
02/16/2021	20:08:18	1892	3.3	8.37		

Well Nelson 35-15HZ 35-15HZ			Field DJ		Job Start Feb/16/2021		Customer Oxy		Job Number EAJ7-01706	
Date	Time 24-hr clock	PRESSURE PSI		RATE B/M		DENSITY LB/G		Message		
02/16/2021	20:08:53	2041		3.2		8.37				
02/16/2021	20:09:28	1978		3.2		8.38				
02/16/2021	20:10:03	2155		3.2		8.37				
02/16/2021	20:10:38	3142		0.0		8.38				
02/16/2021	20:10:42	2998		0.0		8.38		End Displacement		
02/16/2021	20:10:44	3096		0.0		8.38		381 bbl		
02/16/2021	20:10:46	2961		0.0		8.38		Start Casing Test		
02/16/2021	20:11:13	3077		0.0		8.38				
02/16/2021	20:11:48	3012		0.0		8.38				
02/16/2021	20:12:23	3025		0.0		8.38				
02/16/2021	20:12:58	3030		0.0		8.38				
02/16/2021	20:13:33	3048		0.0		8.38				
02/16/2021	20:14:08	3071		0.0		8.38				
02/16/2021	20:14:42	3074		0.0		8.38		0 bbl Spacer to Surface		
02/16/2021	20:14:43	3083		0.0		8.38				
02/16/2021	20:15:18	3100		0.0		8.38				
02/16/2021	20:15:53	3111		0.0		8.38				
02/16/2021	20:16:28	3120		0.0		8.38				
02/16/2021	20:17:03	3128		0.0		8.38				
02/16/2021	20:17:38	3137		0.0		8.38				
02/16/2021	20:18:13	3145		0.0		8.38				
02/16/2021	20:18:48	3154		0.0		8.38				
02/16/2021	20:19:23	3165		0.0		8.38				
02/16/2021	20:19:58	3176		0.0		8.38				
02/16/2021	20:20:33	3185		0.0		8.38				
02/16/2021	20:21:08	3194		0.0		8.38				
02/16/2021	20:21:43	3202		0.0		8.38				
02/16/2021	20:22:18	3209		0.0		8.38				
02/16/2021	20:22:53	3216		0.0		8.38				
02/16/2021	20:23:28	3227		0.0		8.38				
02/16/2021	20:24:03	3236		0.0		8.38				
02/16/2021	20:24:38	3241		0.0		8.38				
02/16/2021	20:25:13	3251		0.0		8.38				
02/16/2021	20:25:48	3257		0.0		8.38				
02/16/2021	20:26:23	3265		0.0		8.38				
02/16/2021	20:26:58	2850		0.0		8.38				
02/16/2021	20:27:33	369		0.0		8.38				
02/16/2021	20:27:58	14		0.0		8.38		Check Floats; 4.5 bbl back		

Well Nelson 35-15HZ 35-15HZ	Field DJ	Job Start Feb/16/2021	Customer Oxy	Job Number EAJ7-01706
---------------------------------------	--------------------	---------------------------------	------------------------	---------------------------------

Post Job Summary

Average Pump Rates, bbl/min					Volume of Fluid Injected, bbl			
Slurry 5.3	N2	Mud	Maximum Rate 6.6	Total Slurry 440.0	Mud 0.0	Spacer 102.9	N2	
Treating Pressure Summary, psi					Breakdown Fluid			
Maximum 7447	Final 15	Average 865	Bump Plug to	Breakdown	Type	Volume bbl	Density lb/gal	
Avg. N2 Percent %	Designed Slurry Volume 0.0 bbl	Displacement 328.5 bbl	Mix Water Temp degF	Cement Circulated to Surface? <input type="checkbox"/>		Volume bbl		
				Washed Thru Perfs <input type="checkbox"/>		To ft		
Customer or Authorized Representative Steve Martinez			Schlumberger Supervisor Grayland Balmer			Circulation Lost <input type="checkbox"/>	Job Completed <input type="checkbox"/>	
						-	-	