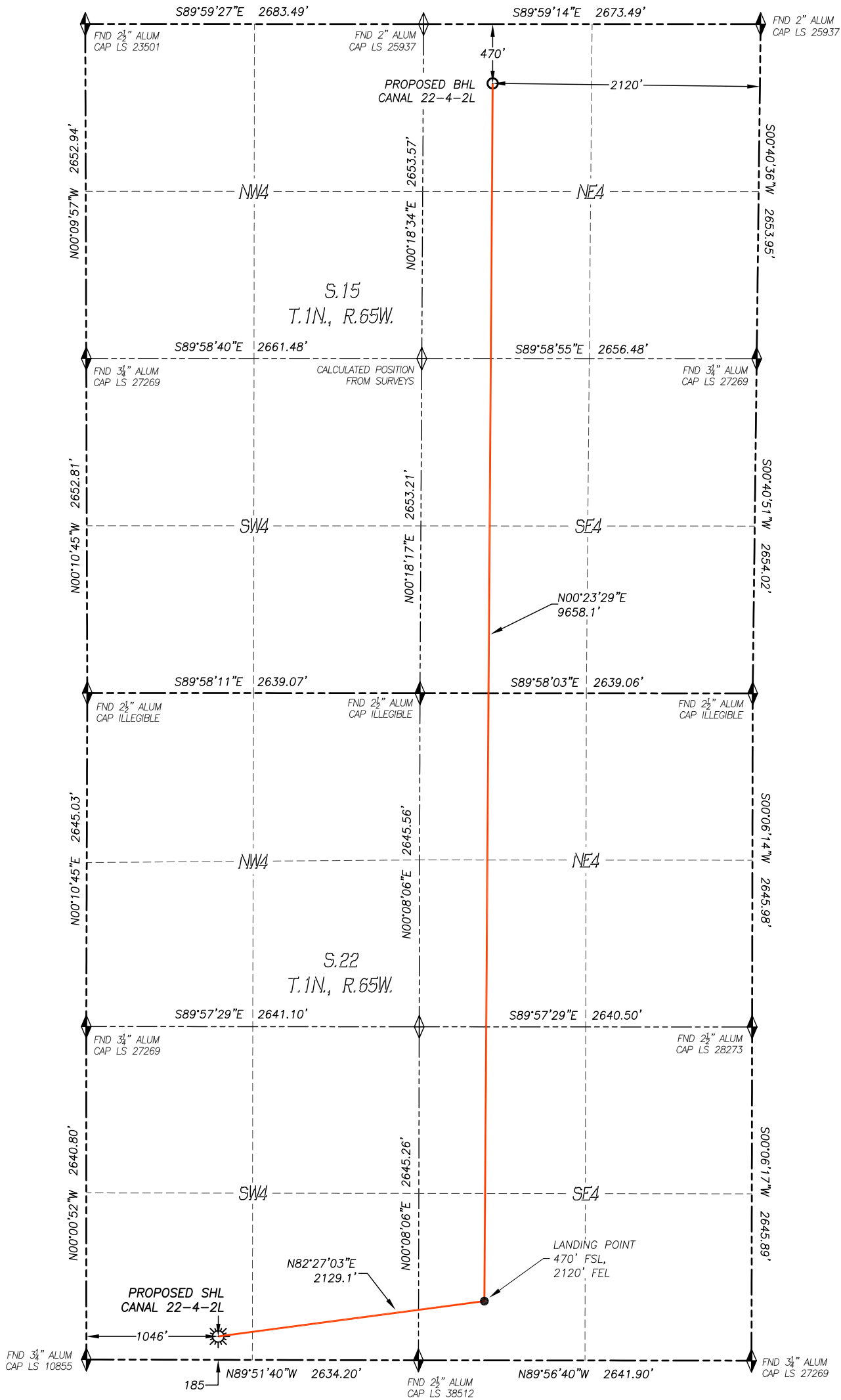


WELL LOCATION CERTIFICATE
CANAL 22-4-2L

SECTION 22, TOWNSHIP 1 NORTH, RANGE 65 WEST OF THE 6TH P.M.

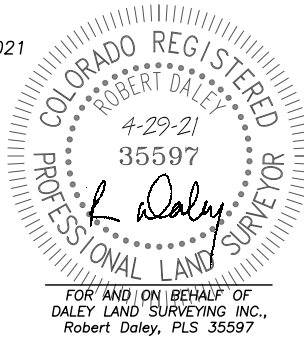


IN ACCORDANCE WITH A REQUEST FROM CONFLUENCE RESOURCES, DALEY LAND SURVEYING, INC. HAS DETERMINED THE SURFACE LOCATION OF THE CANAL 22-4-2L WELL TO BE 185' FSL, 1046' FWL, AS MEASURED AT NINETY (90) DEGREES FROM THE SECTION LINES OF SECTION 22, TOWNSHIP 1 NORTH, RANGE 65 WEST, AND THE BOTTOM HOLE LOCATION TO BE 470' FNL, 2120' FEL, AS MEASURED AT NINETY (90) DEGREES FROM THE SECTION LINES OF SECTION 15, TOWNSHIP 1 NORTH, RANGE 65 WEST, OF THE 6TH PRINCIPAL MERIDIAN, WELD COUNTY, COLORADO.

I HEREBY STATE THAT THIS WELL LOCATION CERTIFICATE WAS PREPARED BY ME OR UNDER MY DIRECT SUPERVISION, THAT THE WORK WAS COMPLETED ON 1/18/2021 FOR AND ON BEHALF OF CONFLUENCE RESOURCES, AND THAT THIS MAP DOES NOT REPRESENT A BOUNDARY SURVEY, IT IS NOT A LAND SURVEY PLAT OR AN IMPROVEMENT SURVEY PLAT AND IT IS NOT TO BE RELIED UPON FOR THE ESTABLISHMENT OF FENCE, BUILDING OR OTHER FUTURE IMPROVEMENT LINES.

NOTES:

- BEARINGS FOR THIS MAP ARE ASSUMED AND BASED UPON GPS OBSERVATIONS MADE BETWEEN MONUMENTS LOCATED AT THE EAST QUARTER CORNER AND THE SOUTHEAST CORNER OF SECTION 22, T.1N., R.65W.
- HORIZONTAL DATUM IS NAD83.
- VERTICAL DATUM IS NAVD88 AND ORIGINATES FROM THE LOCAL C.O.R.S. NETWORK, UTILIZING THE GEOID12A MODEL.
- SEE LOCATION DRAWING FOR VISIBLE IMPROVEMENTS WITHIN 500' OF PROPOSED DISTURBED AREA.
- SURFACE USE: AGRICULTURAL.
- INST. OPERATOR: KYLE DALEY



NEAREST CULTURAL ITEMS:

| | |
|-----------------------------|-----------|
| BUILDING: | 1170'± NE |
| BUILDING UNIT: | 1288'± SW |
| HIGH OCC. BLD. UNIT: | 5280'+ |
| DES. OUTSIDE ACTIVITY AREA: | 5280'+ |
| PUBLIC ROAD: | 1483'± SW |
| ABOVE GROUND UTILITY: | 1444'± SW |
| RAILROAD: | 5280'+ |
| PROPERTY LINE: | 185'± S |
| SCHOOL FACILITY: | 5280'+ |
| SCHOOL PROPERTY LINE: | 5280'+ |
| CHILDCARE FACILITY: | 5280'+ |

NAD 83 LATITUDE AND LONGITUDE

SURFACE LOCATION:

LATITUDE: N40.03017°
LONGITUDE: W104.65585°
ELEV.: 5091'
PDOP.: 1.5
QTR/QTR: SW4/SW4

LANDING POINT:

LATITUDE: N40.03094°
LONGITUDE: W104.64832°

BOTTOM HOLE:

LATITUDE: N40.05745°
LONGITUDE: W104.64807°

LEGEND

- FOUND MONUMENT AS DESCRIBED
- CALCULATED POSITION
- PROPOSED WELL
- EXISTING WELL
- BOTTOM HOLE

