



Gamma Ray CCL
Cement Bond Log
VDL

Company Noble Energy		Well Karch Blue D 12-11		Field Wattenberg		County Weld		State Colo	
Company Noble Energy		Well Karch Blue D 12-11		Field Wattenberg		County Weld		State Colo	
Location: Sec 12 Twp 3N Rge 64W		NE SW		Other Services					
Permanent Datum		GL		Elevation 4731		Elevation			
Log Measured From		KB				KB 4744			
Drilling Measured From		KB				D.F. 4743			
						G.L. 4731			
Date 5-15-06		One							
Run Number		7005							
Depth Driller		4900							
Depth Logger		4900							
Bottom Logged Interval		4900							
Top Log Interval		950							
Fluid Level		Full							
Type Fluid		Water							
Density / Viscosity									
Max. Recorded Temp.									
Estimated Cement Top									
Time Well Ready									
Time Logger on Bottom									
Equipment Number		T 3 TOOL 4							
Location		Platteville							
Recorded By		A. Munday							
Witnessed By		Mr. Ruppel							
Borehole Record		Bit		From		To		Size	
Run Number									
Tubing Record		Weight		From		To			
Casing Record		Size		Wgt/Ft		Top		Bottom	
Surface String									
Prot. String		2 7/8				000		T D	
Production String									
Inner									

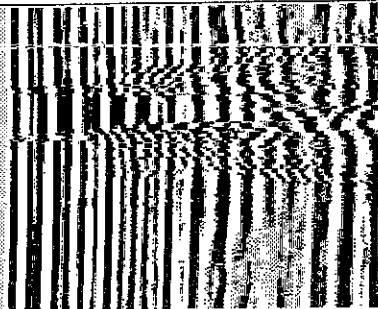
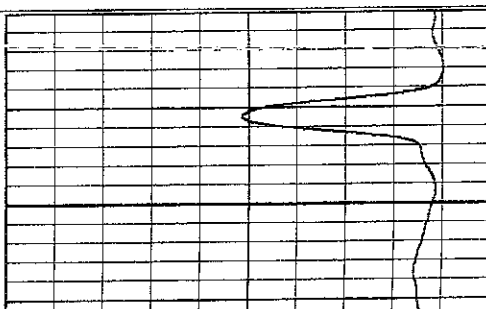
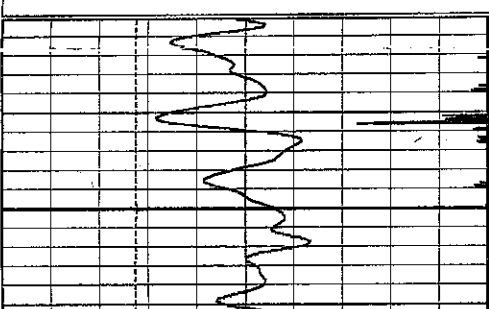
<<< Fold Here >>>

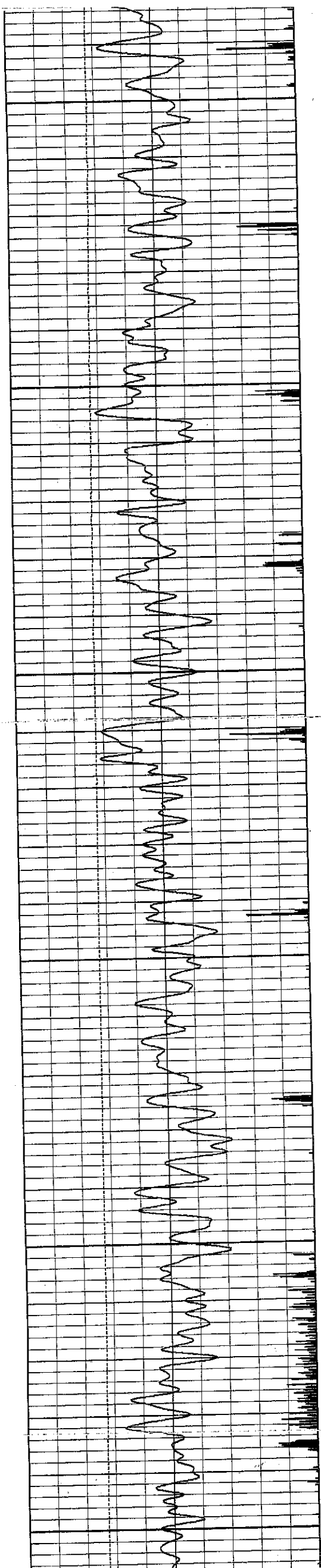
All interpretations are opinions based on inferences from electrical or other measurements and we cannot and do not guarantee the accuracy or correctness of any interpretation, and we shall not, except in the case of gross or willful negligence on our part, be liable or responsible for any losses, costs, damages, or expenses incurred or sustained by anyone resulting from any interpretation made by any of our officers, agents or employees. These interpretations are also subject to our general terms and conditions set out in our current Price Schedule.

Comments

Database File: cbicsypatch.db
Dataset Pathname: pass3
Presentation Format: bond
Dataset Creation: Mon May 15 08:25:25 2006 by Log Warrior 7.0 Standard
Charted by: Depth in Feet scaled 1:240

9	CCL	0.5	0	Amplitude (Pipe Bond) (mV)	100	200	VDL (Formation Bond)
30	Gamma Ray (GAPI)	130	0	Amplified Amplitude (mV)	10		
0	Line Speed (ft/min)	-300					

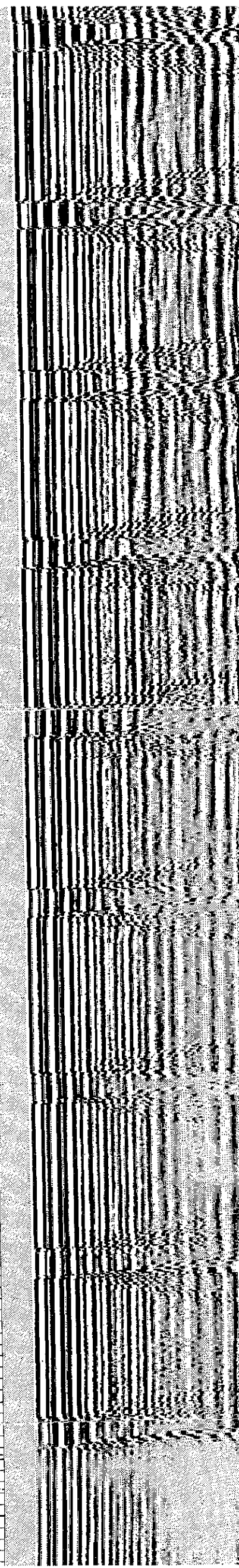
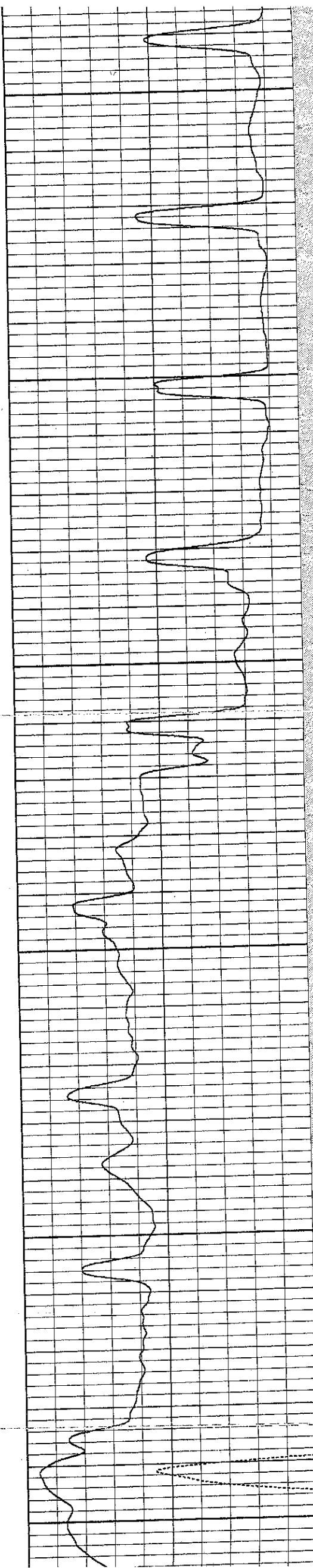




1000

1100

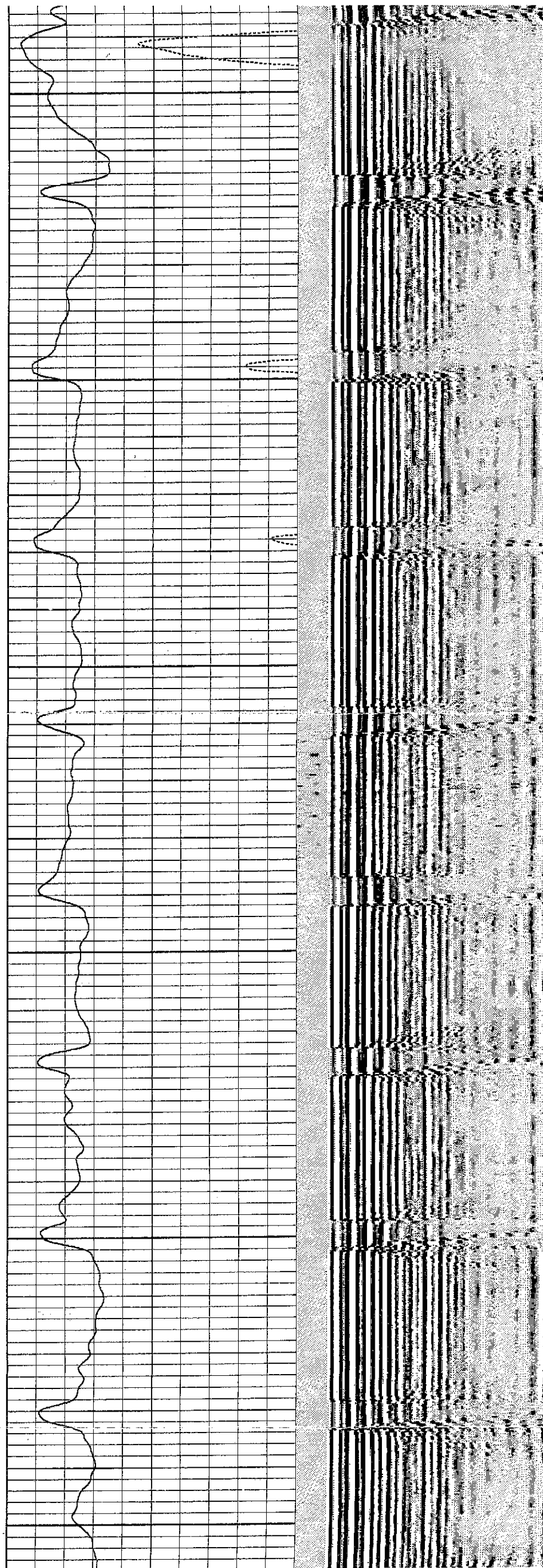
1200

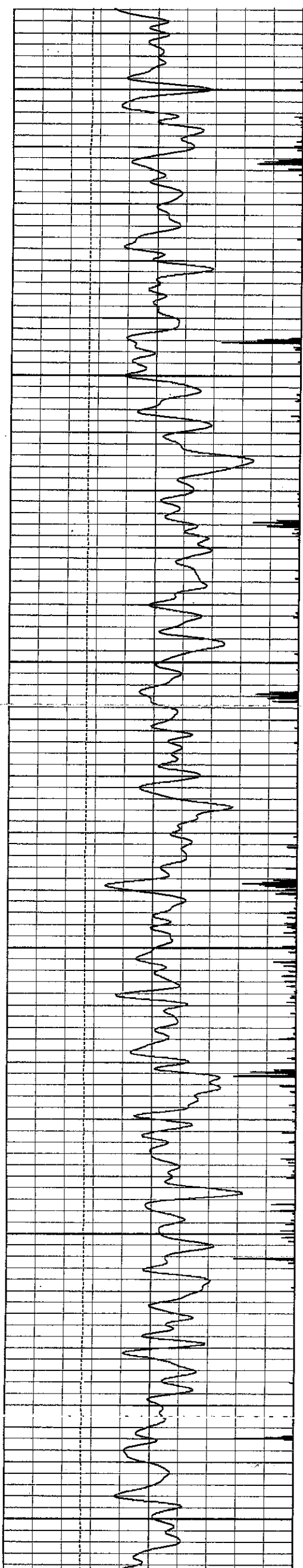


1200

1300

1400

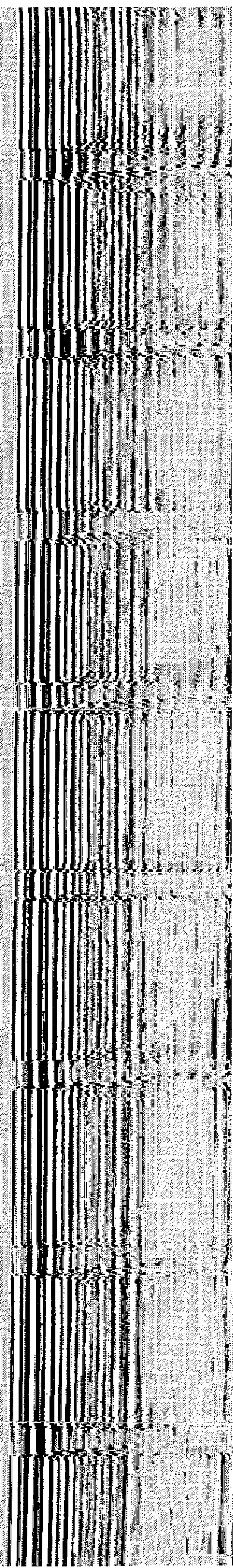
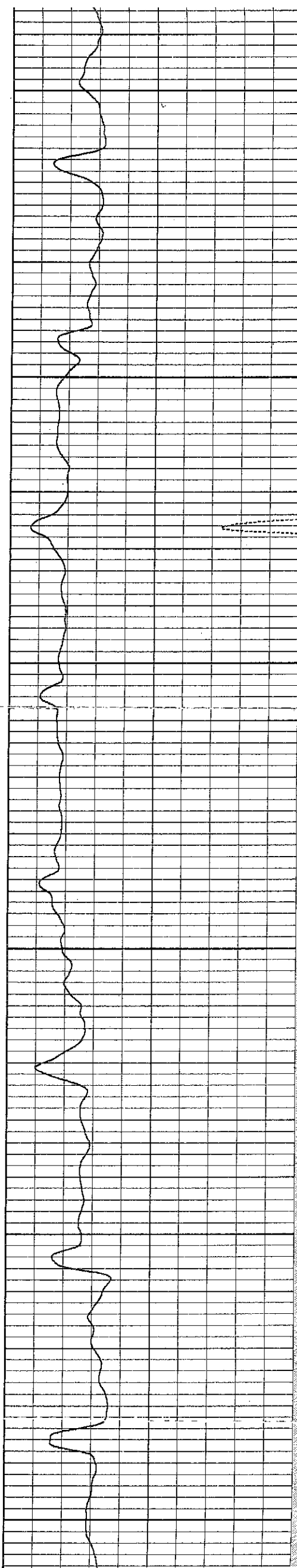


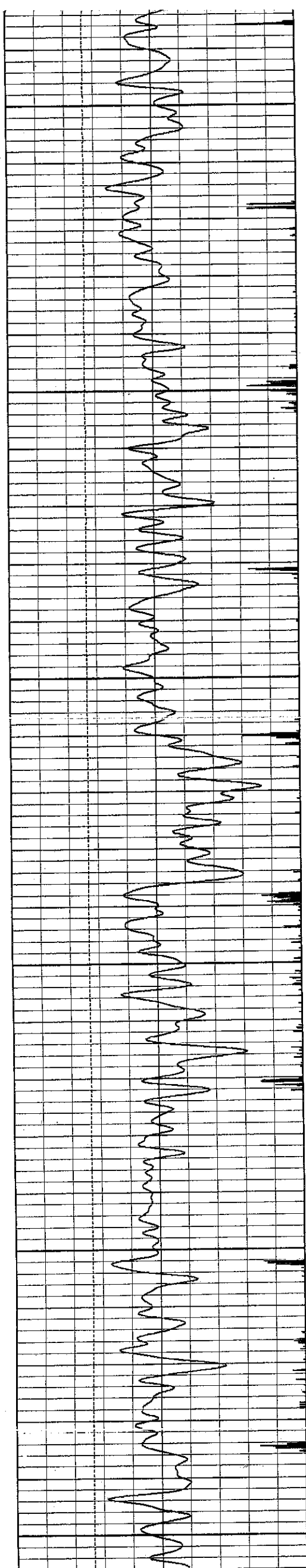


1500

1600

1700

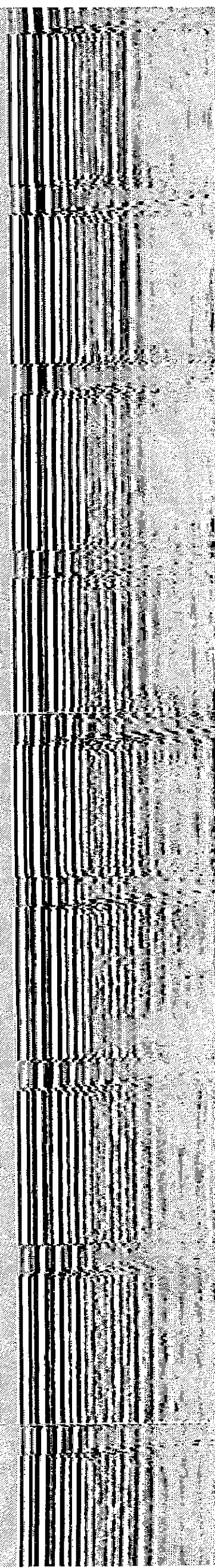
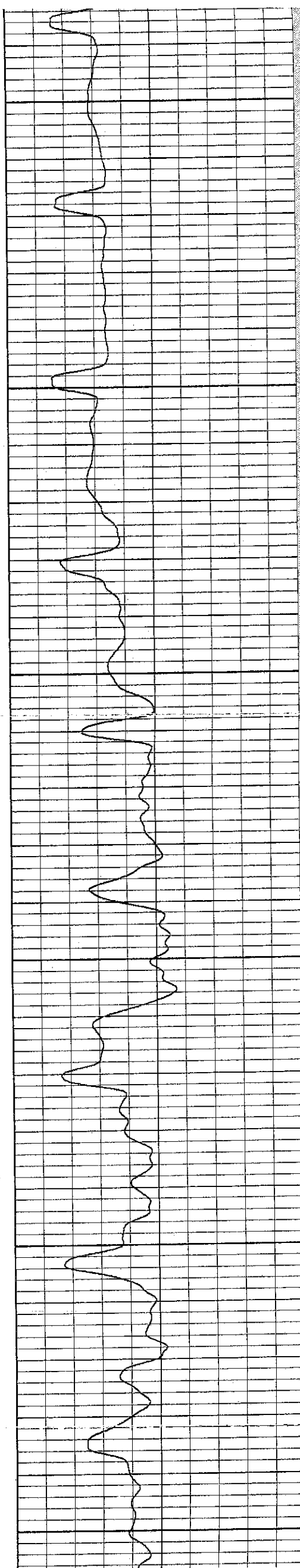


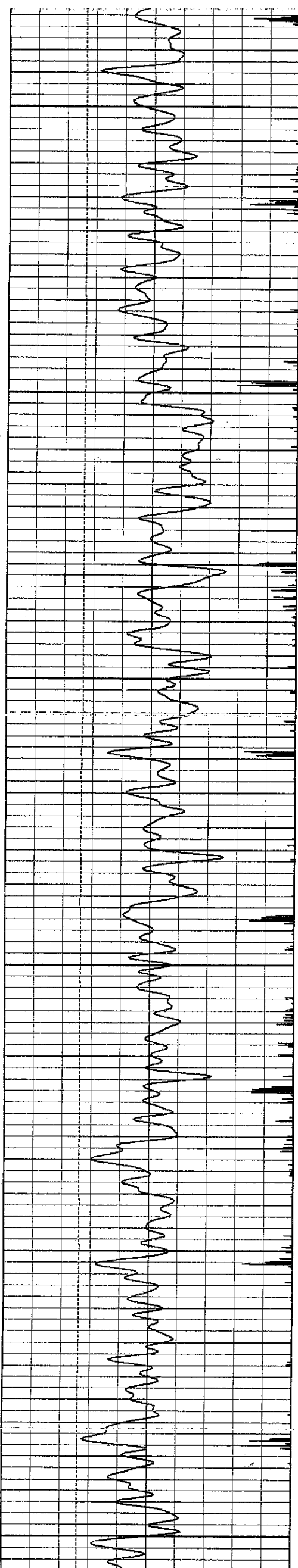


1700

1800

1900

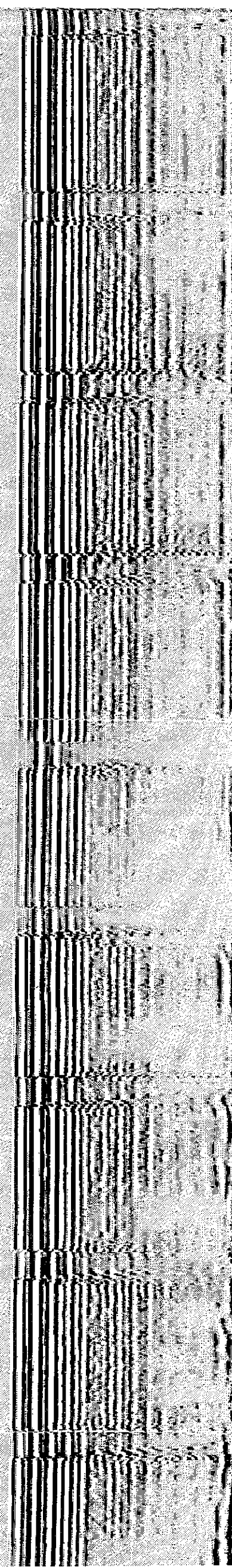
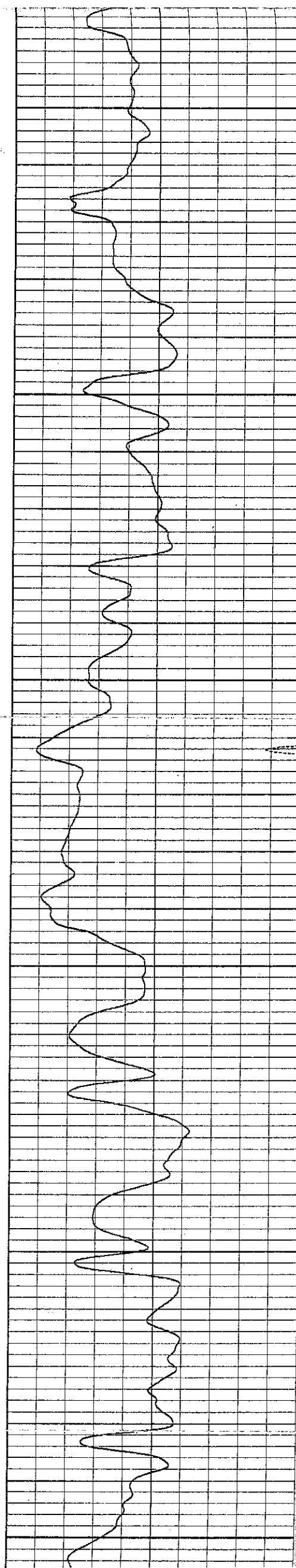


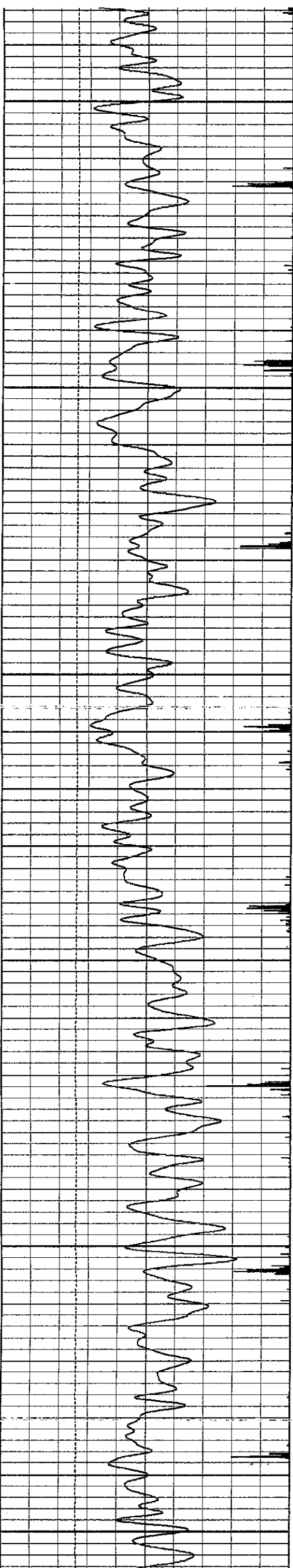


2000

2100

2200

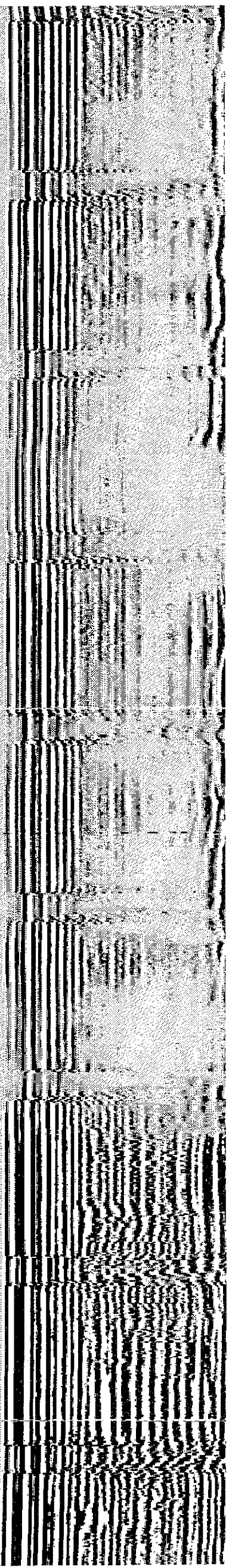
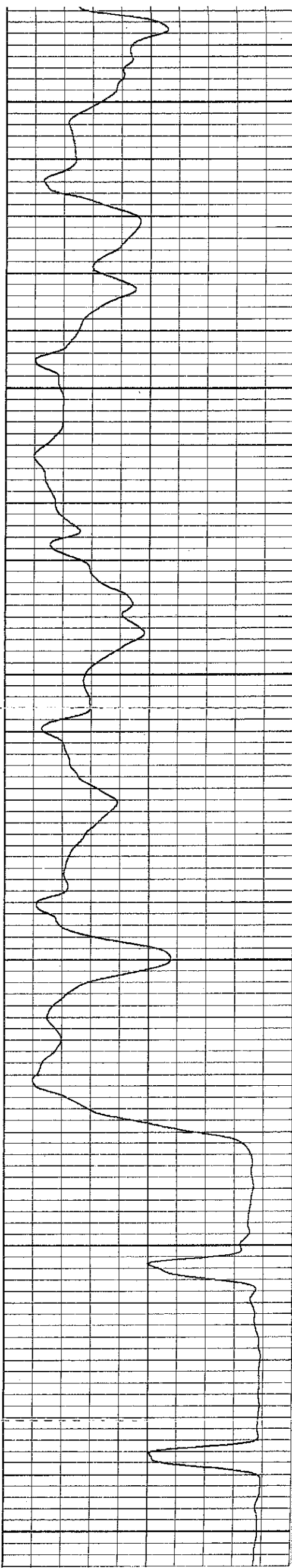


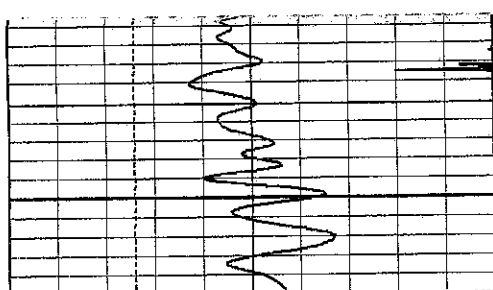


2200

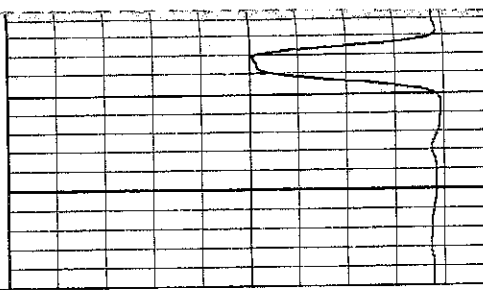
2300

2400

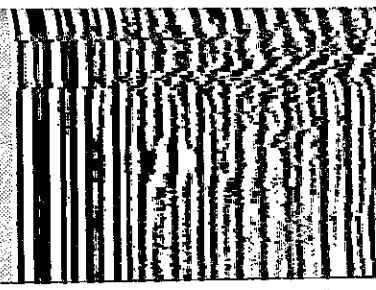




9	CCL	0.5
30	Gamma Ray (GAPI)	130
0	Line Speed (ft/min)	-300



0	Amplitude (Pipe Bond) (mV)	100
0	Amplified Amplitude (mV)	10



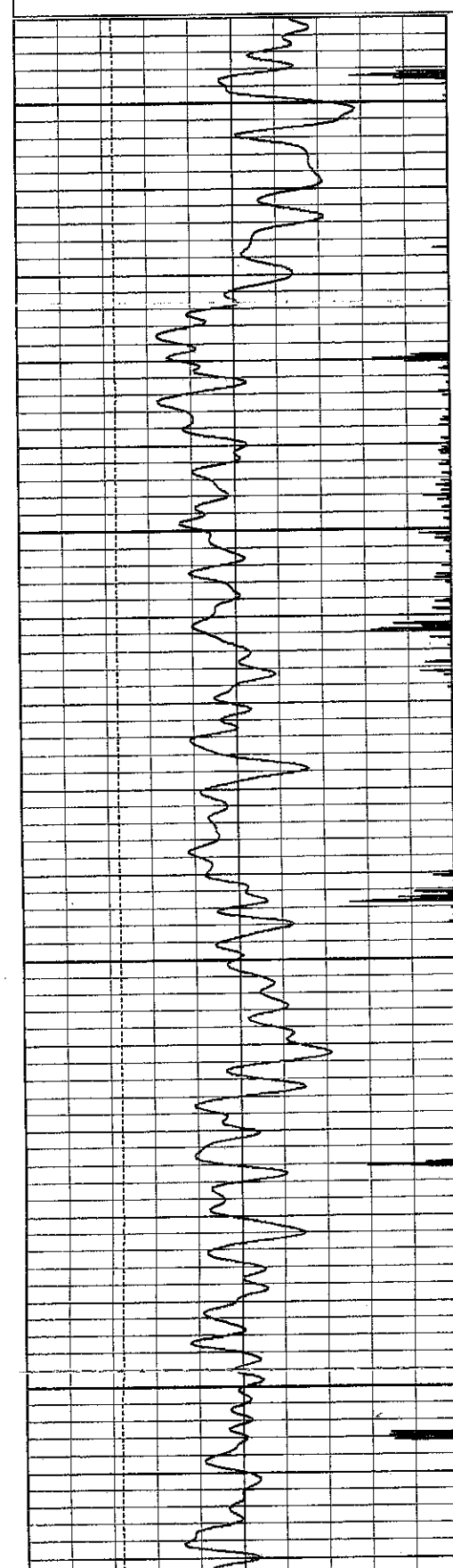
200 VDL (Formation Bond)

Database File: cblosypatch.db
Dataset Pathname: pass2
Presentation Format: bond
Dataset Creation: Mon May 15 07:58:47 2006 by Log Warrior 7.0 Standar
Charted by: Depth in Feet scaled 1:240

9	CCL	0.5
30	Gamma Ray (GAPI)	130
0	Line Speed (ft/min)	-300

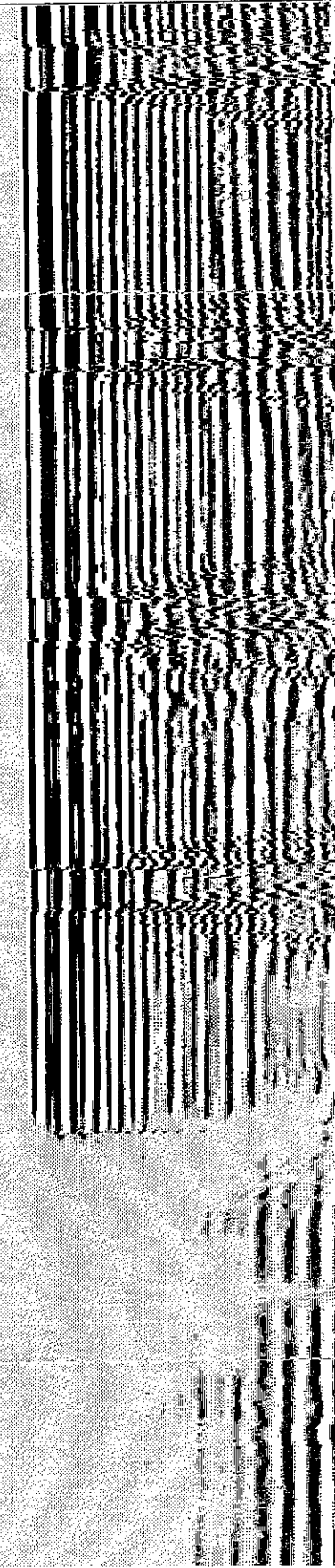
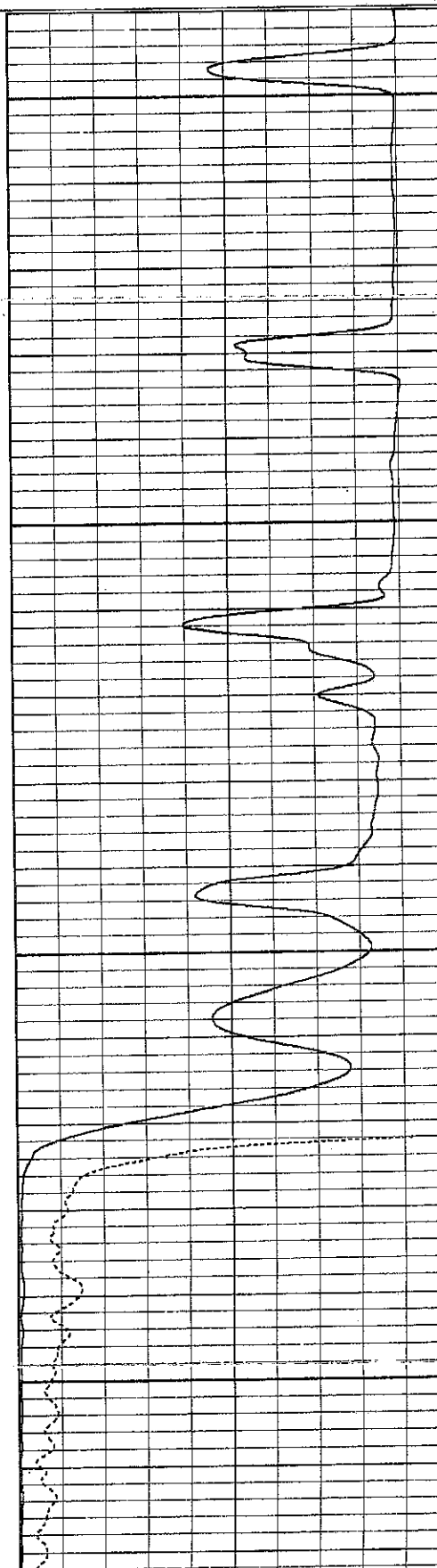
0	Amplitude (Pipe Bond) (mV)	100
0	Amplified Amplitude (mV)	10

200 VDL (Formation Bond)



3700

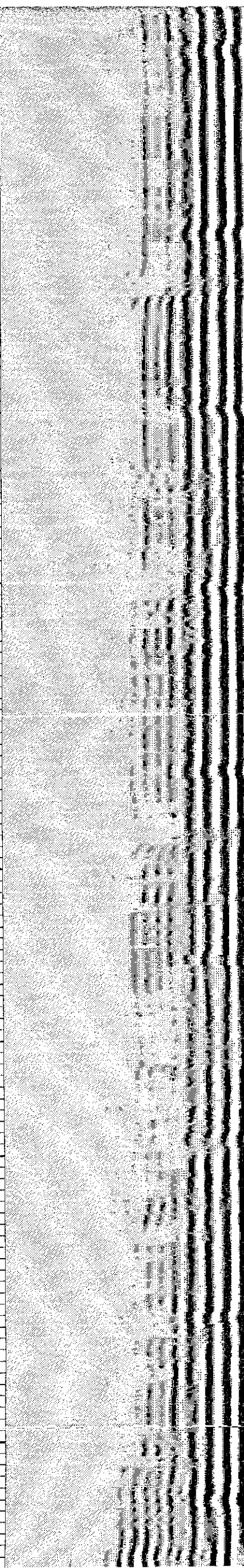
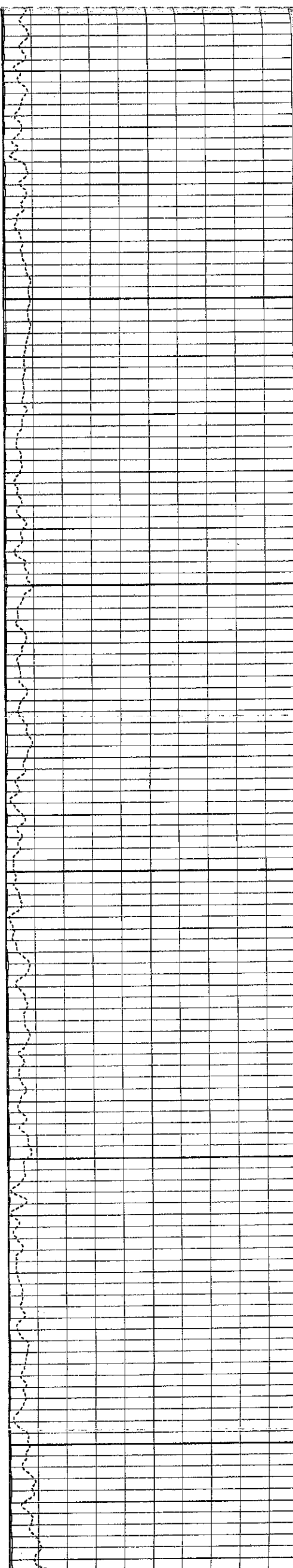
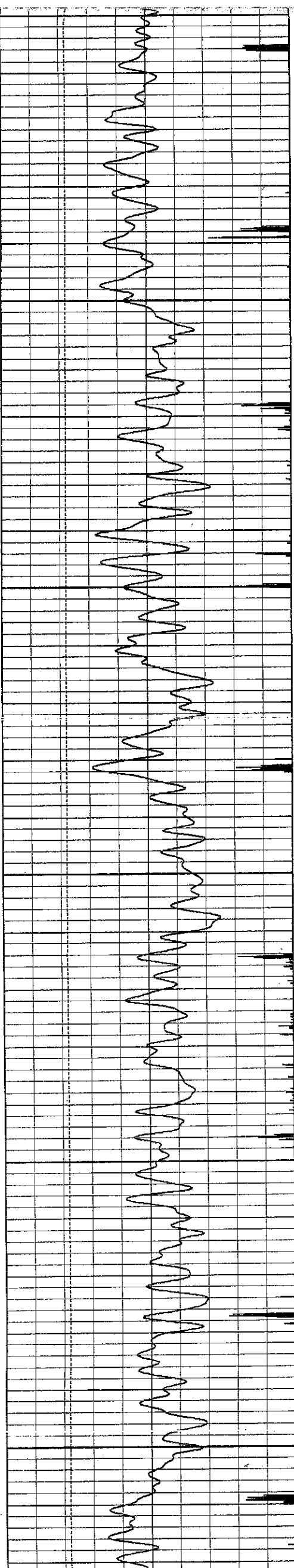
3800

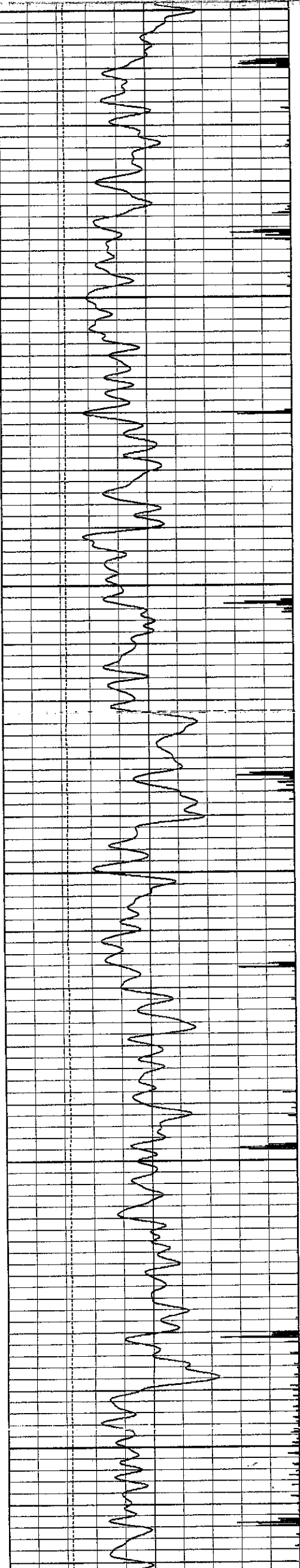


3800

3900

4000

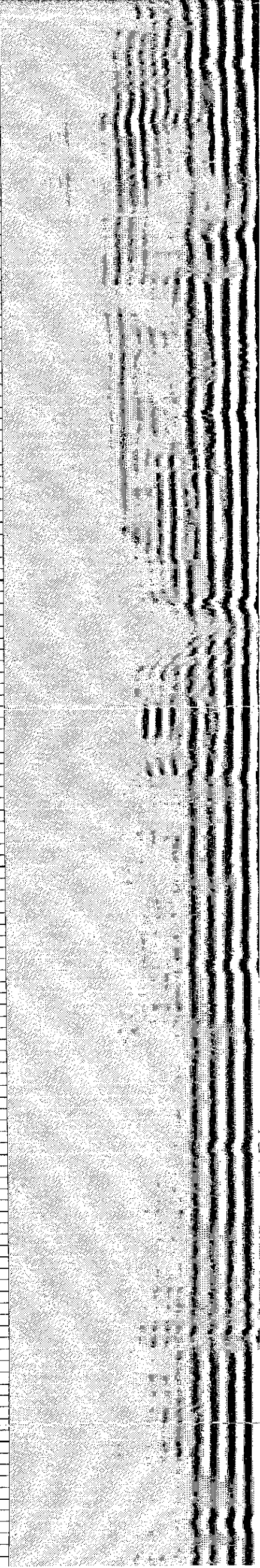
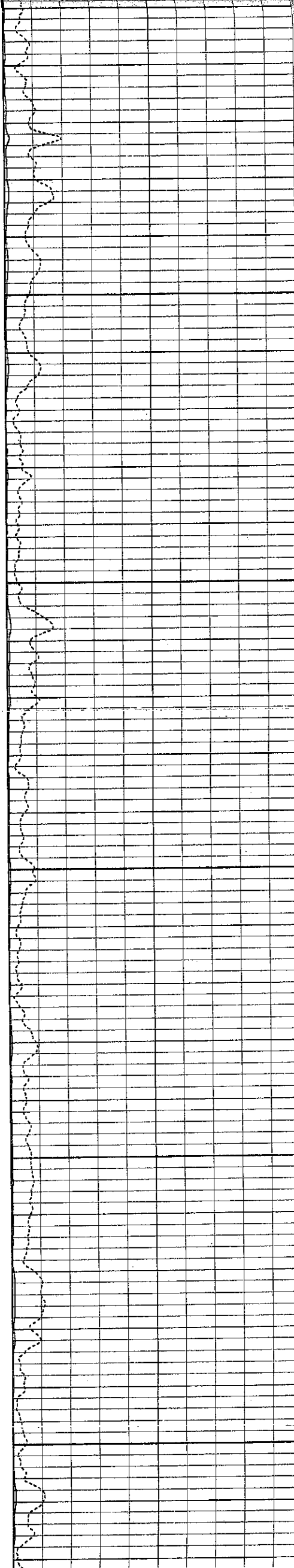




4100

4200

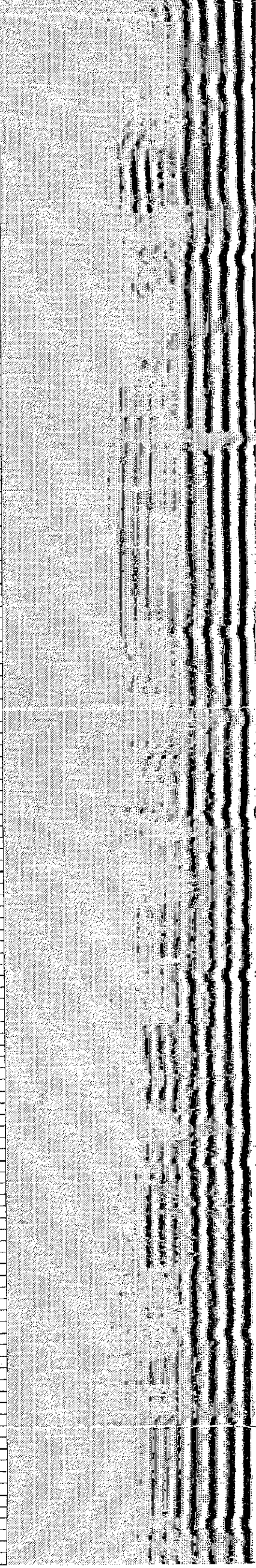
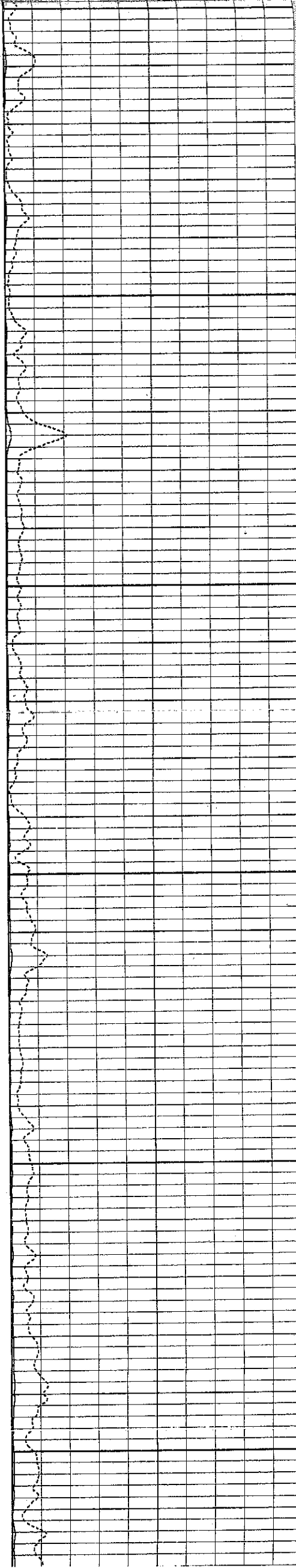
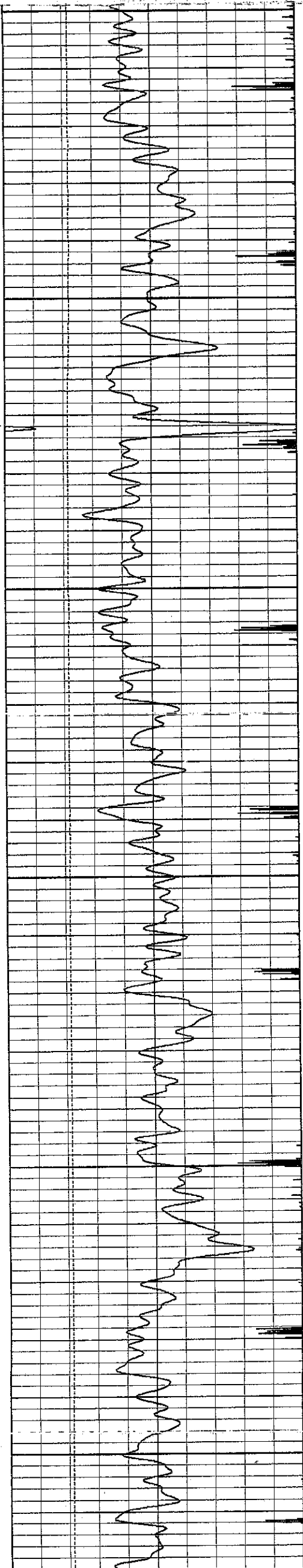
4300

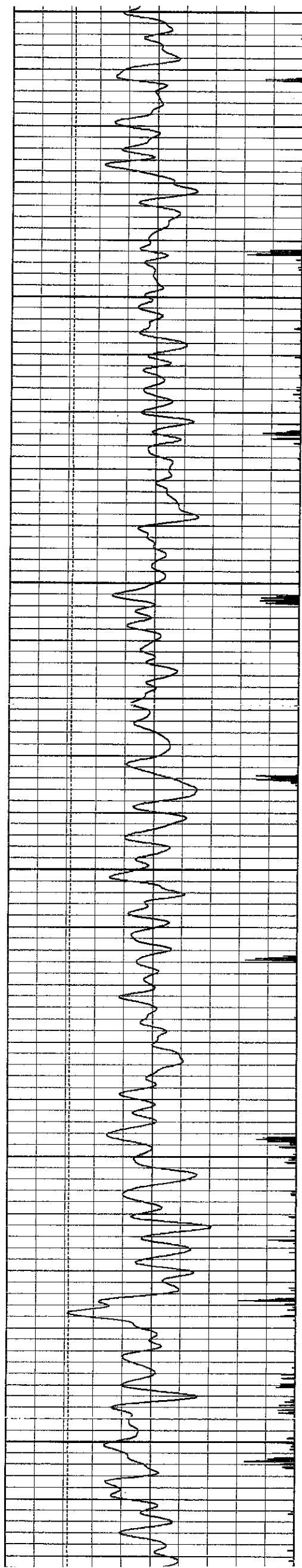


4300

4400

4500





4600

4700

4800

