

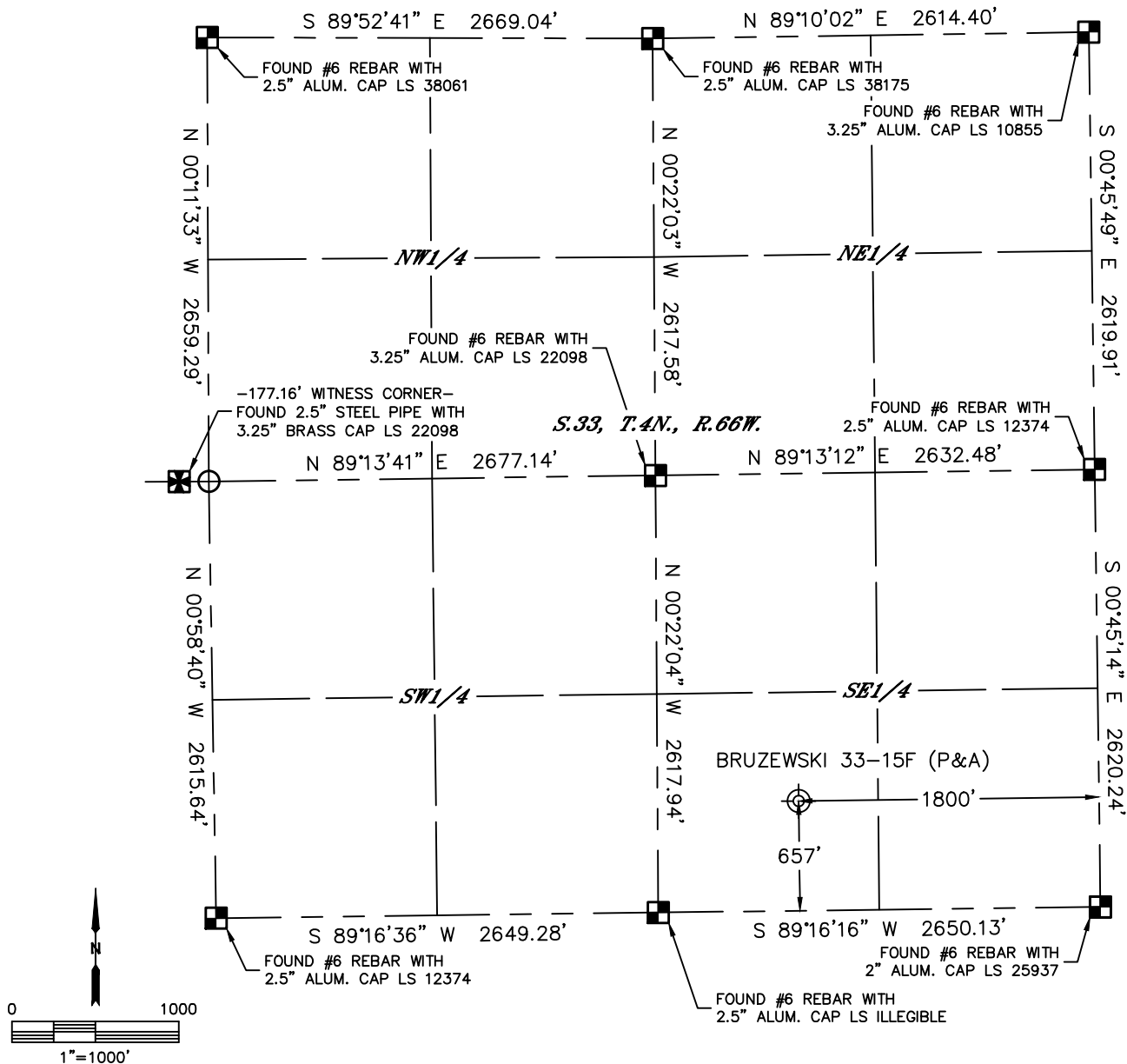


Lat40°, Inc. 6250 W. 10th Street, Unit 2, Greeley, CO 970-515-5294

# PLUGGED AND ABANDONED WELL EXHIBIT

**BRUZEWSKI 33-15F**

SECTION: 33  
TOWNSHIP: 4N  
RANGE: 66W  
6TH. P.M.  
WELD COUNTY, CO



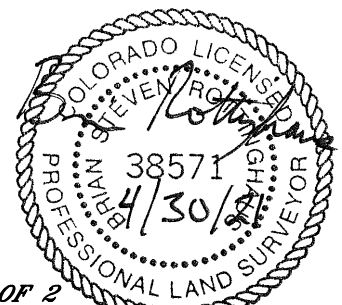
CLIENT: PDC ENERGY, INC.				LANDMAN: KRISTY WEYERMAN			
INSTRUMENT OPERATOR: CASEY KOHOUT				SURVEY DATE: 4/27/2021		SURFACE USE: PASTURE	
SHL FOOTAGE		SHL LAT °	SHL LONG °	SHL PDOP	SHL ELEV (FT.)	SHL 1/4/1/4	SHL S-T-R
657	FSL 1800	FEL 40.26275	-104.77935	1.6	4788	SWSE	33-4-66
DESCRIPTION: FOUND CAPPED WELL PIPE							

## LEGEND

- = ALIQUOT MONUMENT AS DESCRIBED
- = CALCULATED POSITION
- ⊗ = ABANDONED WELL

## NOTE:

- 1) Bearings shown are Grid Bearings of the Colorado State Plane Coordinate System, North Zone, North American Datum 1983. The lineal dimensions as contained herein are based upon the "U.S. Survey Foot."
- 2) Distances to section lines measured at 90 degrees from said section lines.
- 3) Ground elevations are based on an observed GPS elevation (NAVD 1988 DATUM).
- 4) Latitude and Longitude shown are (NAD 83 DATUM).
- 5) Sectional data as shown hereon is from previous surveys and was not verified for this P&A Exhibit.
- 6) This map does not represent a boundary survey.



**SHEET 1 OF 2**

Brian S. Rottinghaus—On behalf of Lat40°, Inc.  
Colorado Licensed Professional Land Surveyor  
DATE: 4/30/2021  
Land Surveyor No. 38571 PROJECT#: 2021176



Lat40°, Inc. 6250 W. 10th Street, Unit 2, Greeley, CO 970-515-5294

## PLUGGED AND ABANDONED WELL EXHIBIT

**BRUZEWSKI 33-15F**

SECTION: 33  
TOWNSHIP: 4N  
RANGE: 66W  
6TH. P.M.  
WELD COUNTY, CO  
DATE: 4/27/2021



VIEW NORTH



VIEW WEST



VIEW EAST



VIEW SOUTH