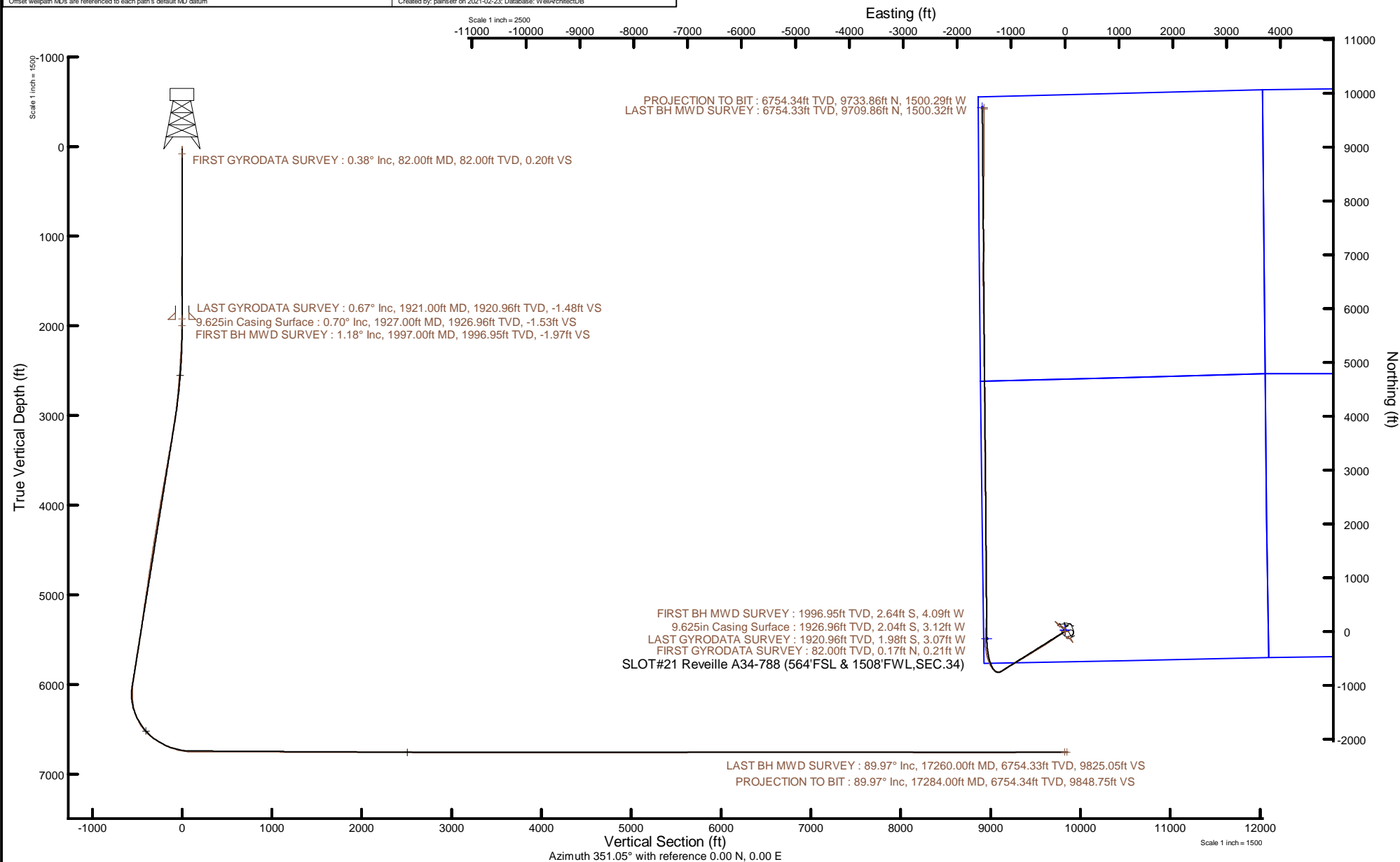


NOBLE ENERGY, INC

Location: COLORADO Slot: SLOT#21 Reveille A34-788 (564'FSL & 1508'FWL,SEC.34)
Field: WELD COUNTY (NOBLE NAD 83 GRID) Well: Reveille A34-788
Facility: SEC.34-T06N-R64W Wellbore: Reveille A34-788 PWB



Plot reference wellpath is Reveille A34-788 PWP Rev-B.0	Grid System: NAD83 / Lambert Colorado SP, Northern Zone (501), US feet
True vertical depths are referenced to H&P 517 (30) (RT)	North Reference: Grid north
Reference wellpath measured depths are referenced to H&P 517 (30) (RT)	Scale: True distance
H&P 517 (30) (RT) to Mean Sea Level: 4661 feet	Coordinates are in feet referenced to Slot
Mean Sea Level to Mud line (At Slot: SLOT#21 Reveille A34-788 (564'FSL & 1508'FWL,SEC.34)): 0 feet	Depths are in feet
Offset wellpath MDs are referenced to each path's default MD datum	Created by: painsrtr on 2021-02-23; Database: WellArchitectDB



REFERENCE WELLPATH IDENTIFICATION

Operator	NOBLE ENERGY, INC	Well	Reveille A34-788
Field	WELD COUNTY (NOBLE NAD 83 GRID)	API	0512350794
Facility	SEC.34-T06N-R64W	Wellbore	Reveille A34-788 AWB
Slot	SLOT#21 Reveille A34-788 (564'FSL & 1508'FWL,SEC.34)		

REPORT SETUP INFORMATION

Projection System	NAD83 / Lambert Colorado SP, Northern Zone (501), US feet	Software System	WellArchitect® 6.0
North Reference	Grid	User	Painsetr
Scale	0.999962	Report Generated	2/23/2021 at 8:01:28 AM
Convergence at slot	0.62° East	Database	WellArchitectDB

WELLPATH LOCATION

	Local coordinates		Grid coordinates		Geographic coordinates	
	North[ft]	East[ft]	Easting[US ft]	Northing[US ft]	Latitude	Longitude
Slot Location	-2689.07	884.47	3267123.88	1403510.38	40.4370700°	-104.5403400°
Facility Reference Pt			3266239.44	1406199.34	40.4444770°	-104.5434130°
Field Reference Pt			3000000.00	4454105.15	48.7761986°	-105.5000000°

WELLPATH DATUM

Calculation method	Minimum curvature	H&P 517 (30') (RT) to Facility Vertical Datum	4661.00ft
Horizontal Reference Pt	Slot	H&P 517 (30') (RT) to Mean Sea Level	4661.00ft
Vertical Reference Pt	H&P 517 (30') (RT)	H&P 517 (30') (RT) to Mud Line at Slot (SLOT#21 Reveille A34-788 (564'FSL & 1508'FWL,SEC.34))	4661.00ft
MD Reference Pt	H&P 517 (30') (RT)	Section Origin	N 0.00, E 0.00 ft
Field Vertical Reference	Mean Sea Level	Section Azimuth	351.05°

REFERENCE WELLPATH IDENTIFICATION

Operator	NOBLE ENERGY, INC	Well	Reveille A34-788
Field	WELD COUNTY (NOBLE NAD 83 GRID)	API	0512350794
Facility	SEC.34-T06N-R64W	Wellbore	Reveille A34-788 AWB
Slot	SLOT#21 Reveille A34-788 (564'FSL & 1508'FWL,SEC.34)		

WELLPATH DATA (185 stations)

MD [ft]	Inclination [°]	Azimuth [°]	TVD [ft]	Vert Sect [ft]	North [ft]	East [ft]	Grid East [US ft]	Grid North [US ft]	Latitude	Longitude	DLS [°/100ft]	Comments
0.00	0.000	309.290	0.00	0.00	0.00	0.00	3267123.88	1403510.38	40.4370700	-104.5403400	0.00	
82.00	0.380	309.290	82.00	0.20	0.17	-0.21	3267123.67	1403510.55	40.4370705	-104.5403408	0.46	FIRST GYRODATA SURVEY
175.00	0.320	266.980	175.00	0.46	0.35	-0.71	3267123.17	1403510.73	40.4370710	-104.5403425	0.28	
266.00	0.130	151.210	266.00	0.39	0.25	-0.91	3267122.97	1403510.63	40.4370707	-104.5403433	0.43	
330.00	0.110	75.330	330.00	0.33	0.20	-0.82	3267123.06	1403510.58	40.4370706	-104.5403429	0.23	
424.00	0.330	193.740	424.00	0.09	-0.04	-0.80	3267123.08	1403510.34	40.4370699	-104.5403429	0.42	
519.00	0.220	217.660	519.00	-0.29	-0.45	-0.97	3267122.91	1403509.93	40.4370688	-104.5403435	0.17	
614.00	0.330	315.350	613.99	-0.19	-0.40	-1.28	3267122.60	1403509.98	40.4370689	-104.5403446	0.44	
709.00	0.130	204.670	708.99	-0.06	-0.30	-1.51	3267122.37	1403510.08	40.4370692	-104.5403455	0.42	
803.00	0.100	29.260	802.99	-0.09	-0.33	-1.52	3267122.36	1403510.05	40.4370691	-104.5403455	0.24	
898.00	0.110	251.410	897.99	-0.04	-0.28	-1.56	3267122.32	1403510.10	40.4370693	-104.5403456	0.21	
992.00	0.640	139.830	991.99	-0.50	-0.71	-1.31	3267122.57	1403509.67	40.4370681	-104.5403447	0.73	
1087.00	0.290	155.160	1086.99	-1.19	-1.34	-0.87	3267123.01	1403509.04	40.4370663	-104.5403432	0.39	
1182.00	0.170	121.850	1181.99	-1.51	-1.63	-0.65	3267123.23	1403508.75	40.4370655	-104.5403424	0.18	
1276.00	0.300	180.070	1275.99	-1.84	-1.95	-0.53	3267123.35	1403508.43	40.4370647	-104.5403420	0.27	
1371.00	0.510	227.050	1370.99	-2.33	-2.49	-0.84	3267123.04	1403507.89	40.4370632	-104.5403431	0.40	
1466.00	0.600	265.170	1465.98	-2.53	-2.82	-1.64	3267122.24	1403507.56	40.4370623	-104.5403460	0.39	
1561.00	0.540	271.870	1560.98	-2.41	-2.84	-2.59	3267121.29	1403507.54	40.4370623	-104.5403494	0.09	
1655.00	0.610	338.310	1654.97	-1.84	-2.36	-3.21	3267120.67	1403508.02	40.4370636	-104.5403517	0.67	
1750.00	0.540	27.700	1749.97	-0.98	-1.50	-3.19	3267120.69	1403508.88	40.4370660	-104.5403515	0.51	
1845.00	0.340	154.890	1844.97	-0.89	-1.36	-2.86	3267121.02	1403509.02	40.4370663	-104.5403504	0.83	
1876.00	0.540	191.020	1875.97	-1.12	-1.58	-2.85	3267121.03	1403508.80	40.4370657	-104.5403503	1.07	
1921.00	0.670	222.760	1920.96	-1.48	-1.98	-3.07	3267120.81	1403508.40	40.4370646	-104.5403511	0.79	LAST GYRODATA SURVEY
1997.00	1.180	245.370	1996.95	-1.97	-2.64	-4.09	3267119.79	1403507.74	40.4370629	-104.5403548	0.81	FIRST BH MWD SURVEY
2091.00	3.250	237.110	2090.88	-3.31	-4.49	-7.20	3267116.68	1403505.89	40.4370579	-104.5403661	2.22	
2186.00	5.980	236.580	2185.56	-6.45	-8.68	-13.60	3267110.28	1403501.70	40.4370466	-104.5403892	2.87	
2281.00	7.820	237.210	2279.87	-11.12	-14.90	-23.16	3267100.72	1403495.48	40.4370298	-104.5404238	1.94	
2375.00	8.730	236.430	2372.89	-16.67	-22.31	-34.48	3267089.40	1403488.07	40.4370098	-104.5404647	0.98	
2470.00	9.130	236.050	2466.74	-22.86	-30.51	-46.74	3267077.14	1403479.88	40.4369876	-104.5405091	0.43	
2565.00	10.160	236.660	2560.39	-29.51	-39.32	-59.99	3267063.89	1403471.06	40.4369638	-104.5405570	1.09	

REFERENCE WELLPATH IDENTIFICATION

Operator	NOBLE ENERGY, INC	Well	Reveille A34-788
Field	WELD COUNTY (NOBLE NAD 83 GRID)	API	0512350794
Facility	SEC.34-T06N-R64W	Wellbore	Reveille A34-788 AWB
Slot	SLOT#21 Reveille A34-788 (564'FSL & 1508'FWL,SEC.34)		

WELLPATH DATA (185 stations)

MD [ft]	Inclination [°]	Azimuth [°]	TVD [ft]	Vert Sect [ft]	North [ft]	East [ft]	Grid East [US ft]	Grid North [US ft]	Latitude	Longitude	DLS [°/100ft]	Comments
2659.00	11.650	236.230	2652.69	-36.91	-49.15	-74.81	3267049.07	1403461.23	40.4369373	-104.5406106	1.59	
2754.00	11.650	236.080	2745.74	-44.99	-59.84	-90.74	3267033.14	1403450.54	40.4369084	-104.5406683	0.03	
2849.00	14.340	236.400	2838.30	-53.94	-71.70	-108.50	3267015.38	1403438.68	40.4368764	-104.5407326	2.83	
2944.00	16.260	235.890	2929.92	-64.50	-85.67	-129.32	3266994.57	1403424.71	40.4368387	-104.5408079	2.03	
3038.00	19.140	235.370	3019.47	-76.78	-101.81	-152.90	3266970.99	1403408.57	40.4367951	-104.5408932	3.07	
3133.00	20.190	235.050	3108.92	-90.71	-120.06	-179.15	3266944.74	1403390.33	40.4367458	-104.5409882	1.11	
3228.00	20.960	235.890	3197.86	-105.12	-138.98	-206.66	3266917.23	1403371.41	40.4366947	-104.5410878	0.87	
3323.00	21.700	236.480	3286.36	-119.65	-158.20	-235.37	3266888.52	1403352.18	40.4366428	-104.5411916	0.81	
3417.00	22.730	235.200	3373.38	-134.79	-178.17	-264.77	3266859.12	1403332.22	40.4365888	-104.5412980	1.21	
3511.00	21.900	235.660	3460.34	-150.22	-198.42	-294.16	3266829.74	1403311.97	40.4365341	-104.5414044	0.90	
3606.00	22.240	236.570	3548.38	-165.27	-218.32	-323.79	3266800.10	1403292.07	40.4364804	-104.5415116	0.51	
3700.00	23.070	237.750	3635.12	-179.92	-237.95	-354.21	3266769.68	1403272.44	40.4364274	-104.5416216	1.01	
3795.00	24.230	238.220	3722.14	-194.85	-258.15	-386.53	3266737.37	1403252.24	40.4363729	-104.5417385	1.24	
3889.00	24.250	238.360	3807.85	-209.78	-278.43	-419.36	3266704.54	1403231.96	40.4363182	-104.5418572	0.06	
3984.00	23.870	238.820	3894.60	-224.57	-298.62	-452.41	3266671.49	1403211.78	40.4362638	-104.5419767	0.45	
4078.00	23.990	238.220	3980.52	-239.18	-318.53	-484.93	3266638.97	1403191.87	40.4362101	-104.5420943	0.29	
4172.00	24.040	238.300	4066.38	-254.00	-338.65	-517.46	3266606.44	1403171.74	40.4361558	-104.5422120	0.06	
4267.00	22.770	238.050	4153.57	-268.66	-358.55	-549.53	3266574.38	1403151.84	40.4361022	-104.5423279	1.34	
4361.00	22.640	237.940	4240.28	-282.87	-377.78	-580.29	3266543.61	1403132.62	40.4360503	-104.5424392	0.15	
4551.00	22.700	238.280	4415.60	-311.41	-416.47	-642.47	3266481.44	1403093.93	40.4359460	-104.5426640	0.08	
4645.00	22.380	239.420	4502.42	-325.02	-435.11	-673.31	3266450.60	1403075.29	40.4358957	-104.5427755	0.58	
4740.00	22.470	239.270	4590.24	-338.42	-453.58	-704.48	3266419.43	1403056.81	40.4358459	-104.5428882	0.11	
4835.00	22.660	238.980	4677.97	-352.04	-472.29	-735.77	3266388.14	1403038.11	40.4357955	-104.5430013	0.23	
4929.00	21.700	239.910	4765.01	-365.10	-490.34	-766.32	3266357.59	1403020.06	40.4357469	-104.5431118	1.09	
5024.00	20.670	239.720	4853.59	-377.54	-507.60	-796.00	3266327.91	1403002.80	40.4357004	-104.5432190	1.09	
5118.00	22.630	238.610	4940.95	-390.47	-525.38	-825.77	3266298.15	1402985.02	40.4356525	-104.5433267	2.13	
5212.00	22.550	238.860	5027.74	-404.18	-544.12	-856.63	3266267.28	1402966.28	40.4356019	-104.5434382	0.13	
5307.00	20.240	239.860	5116.19	-417.00	-561.80	-886.44	3266237.48	1402948.61	40.4355543	-104.5435460	2.46	
5401.00	20.230	239.280	5204.39	-428.91	-578.26	-914.47	3266209.44	1402932.14	40.4355099	-104.5436473	0.21	
5496.00	20.430	239.050	5293.47	-441.21	-595.18	-942.81	3266181.11	1402915.22	40.4354643	-104.5437498	0.23	

REFERENCE WELLPATH IDENTIFICATION

Operator	NOBLE ENERGY, INC	Well	Reveille A34-788
Field	WELD COUNTY (NOBLE NAD 83 GRID)	API	0512350794
Facility	SEC.34-T06N-R64W	Wellbore	Reveille A34-788 AWB
Slot	SLOT#21 Reveille A34-788 (564'FSL & 1508'FWL,SEC.34)		

WELLPATH DATA (185 stations)

MD [ft]	Inclination [°]	Azimuth [°]	TVD [ft]	Vert Sect [ft]	North [ft]	East [ft]	Grid East [US ft]	Grid North [US ft]	Latitude	Longitude	DLS [°/100ft]	Comments
5591.00	21.410	239.020	5382.21	-453.92	-612.63	-971.90	3266152.02	1402897.77	40.4354173	-104.5438549	1.03	
5685.00	22.090	239.310	5469.51	-466.90	-630.49	-1001.81	3266122.11	1402879.92	40.4353692	-104.5439631	0.73	
5779.00	21.580	239.630	5556.77	-479.76	-648.25	-1031.92	3266092.00	1402862.16	40.4353213	-104.5440719	0.56	
5874.00	22.210	237.520	5644.92	-493.31	-666.72	-1062.14	3266061.78	1402843.68	40.4352715	-104.5441812	1.06	
5968.00	22.170	237.410	5731.96	-507.51	-685.82	-1092.07	3266031.85	1402824.59	40.4352200	-104.5442894	0.06	
6063.00	21.950	237.590	5820.00	-521.76	-704.99	-1122.16	3266001.76	1402805.42	40.4351683	-104.5443983	0.24	
6158.00	20.970	237.530	5908.41	-535.62	-723.63	-1151.50	3265972.43	1402786.78	40.4351180	-104.5445044	1.03	
6253.00	18.290	238.690	5997.88	-548.07	-740.51	-1178.58	3265945.35	1402769.90	40.4350724	-104.5446023	2.85	
6348.00	19.160	255.990	6087.93	-555.12	-752.04	-1206.46	3265917.47	1402758.37	40.4350416	-104.5447029	5.90	
6442.00	22.630	275.240	6175.83	-552.04	-754.12	-1239.49	3265884.44	1402756.29	40.4350369	-104.5448216	8.14	
6537.00	23.330	291.710	6263.39	-537.95	-745.48	-1275.20	3265848.73	1402764.93	40.4350616	-104.5449496	6.79	
6631.00	27.250	310.190	6348.49	-512.13	-724.67	-1309.00	3265814.93	1402785.74	40.4351198	-104.5450702	9.33	
6726.00	33.330	319.970	6430.54	-473.27	-690.60	-1342.45	3265781.48	1402819.81	40.4352143	-104.5451890	8.22	
6821.00	42.210	329.890	6505.62	-421.00	-642.87	-1375.35	3265748.59	1402867.54	40.4353462	-104.5453053	11.30	
6915.00	49.780	338.100	6570.94	-356.43	-582.11	-1404.64	3265719.29	1402928.29	40.4355139	-104.5454082	10.20	
7010.00	57.840	343.670	6627.02	-281.04	-509.71	-1429.53	3265694.41	1403000.69	40.4357133	-104.5454948	9.71	
7104.00	63.870	346.870	6672.78	-199.40	-430.35	-1450.33	3265673.61	1403080.05	40.4359318	-104.5455664	7.07	
7199.00	70.350	351.360	6709.73	-112.01	-344.46	-1466.76	3265657.18	1403165.93	40.4361680	-104.5456221	8.09	
7293.00	78.060	358.280	6735.33	-21.89	-254.50	-1474.81	3265649.13	1403255.89	40.4364151	-104.5456476	10.83	
7388.00	86.330	2.030	6748.22	70.94	-160.48	-1474.52	3265649.41	1403349.90	40.4366732	-104.5456429	9.54	
7483.00	90.370	2.470	6750.96	164.07	-65.61	-1470.80	3265653.14	1403444.77	40.4369335	-104.5456259	4.28	
7577.00	89.750	3.040	6750.86	256.12	28.28	-1466.28	3265657.66	1403538.65	40.4371910	-104.5456060	0.90	
7672.00	90.430	2.610	6750.71	349.12	123.16	-1461.60	3265662.34	1403633.53	40.4374513	-104.5455855	0.85	
7767.00	90.400	2.670	6750.02	442.18	218.06	-1457.22	3265666.72	1403728.43	40.4377117	-104.5455661	0.07	
7861.00	90.620	0.430	6749.18	534.59	312.01	-1454.68	3265669.26	1403822.38	40.4379695	-104.5455534	2.39	
7956.00	89.820	359.760	6748.82	628.41	407.01	-1454.52	3265669.42	1403917.37	40.4382302	-104.5455491	1.10	
8051.00	89.600	359.820	6749.30	722.30	502.01	-1454.87	3265669.07	1404012.37	40.4384910	-104.5455467	0.24	
8145.00	89.320	359.150	6750.19	815.28	596.00	-1455.71	3265668.22	1404106.36	40.4387490	-104.5455461	0.77	
8240.00	89.720	359.710	6750.98	909.26	690.99	-1456.66	3265667.28	1404201.34	40.4390097	-104.5455458	0.72	
8335.00	89.630	359.870	6751.52	1003.15	785.99	-1457.01	3265666.93	1404296.34	40.4392705	-104.5455434	0.19	

REFERENCE WELLPATH IDENTIFICATION

Operator	NOBLE ENERGY, INC	Well	Reveille A34-788
Field	WELD COUNTY (NOBLE NAD 83 GRID)	API	0512350794
Facility	SEC.34-T06N-R64W	Wellbore	Reveille A34-788 AWB
Slot	SLOT#21 Reveille A34-788 (564'FSL & 1508'FWL,SEC.34)		

WELLPATH DATA (185 stations)

MD [ft]	Inclination [°]	Azimuth [°]	TVD [ft]	Vert Sect [ft]	North [ft]	East [ft]	Grid East [US ft]	Grid North [US ft]	Latitude	Longitude	DLS [°/100ft]	Comments
8429.00	89.050	359.410	6752.60	1096.09	879.98	-1457.60	3265666.34	1404390.32	40.4395285	-104.5455419	0.79	
8524.00	89.720	358.670	6753.62	1190.16	974.96	-1459.19	3265664.75	1404485.30	40.4397892	-104.5455439	1.05	
8618.00	90.180	359.990	6753.71	1283.18	1068.95	-1460.29	3265663.65	1404579.29	40.4400472	-104.5455443	1.49	
8713.00	89.780	359.810	6753.74	1377.05	1163.95	-1460.45	3265663.48	1404674.28	40.4403080	-104.5455412	0.46	
8808.00	89.690	358.640	6754.18	1471.08	1258.94	-1461.74	3265662.20	1404769.27	40.4405687	-104.5455421	1.24	
8903.00	89.540	359.590	6754.82	1565.14	1353.92	-1463.21	3265660.73	1404864.25	40.4408295	-104.5455437	1.01	
8998.00	89.630	359.300	6755.50	1659.12	1448.92	-1464.13	3265659.81	1404959.24	40.4410902	-104.5455433	0.32	
9092.00	90.310	359.440	6755.55	1752.12	1542.91	-1465.16	3265658.78	1405053.23	40.4413483	-104.5455434	0.74	
9187.00	89.820	359.440	6755.45	1846.11	1637.91	-1466.09	3265657.85	1405148.22	40.4416090	-104.5455431	0.52	
9282.00	89.940	359.620	6755.64	1940.07	1732.90	-1466.87	3265657.07	1405243.21	40.4418698	-104.5455422	0.23	
9376.00	90.120	359.230	6755.60	2033.06	1826.90	-1467.81	3265656.13	1405337.21	40.4421278	-104.5455420	0.46	
9471.00	89.750	359.720	6755.70	2127.04	1921.89	-1468.68	3265655.26	1405432.20	40.4423886	-104.5455414	0.65	
9565.00	90.220	359.440	6755.73	2220.00	2015.89	-1469.37	3265654.57	1405526.19	40.4426466	-104.5455403	0.58	
9660.00	89.720	359.590	6755.78	2313.96	2110.89	-1470.18	3265653.76	1405621.18	40.4429073	-104.5455395	0.55	
9755.00	89.600	359.790	6756.34	2407.88	2205.88	-1470.69	3265653.25	1405716.18	40.4431681	-104.5455376	0.25	
9850.00	89.540	359.710	6757.05	2501.78	2300.88	-1471.10	3265652.84	1405811.17	40.4434288	-104.5455355	0.11	
9944.00	89.510	359.490	6757.83	2594.74	2394.87	-1471.76	3265652.18	1405905.16	40.4436868	-104.5455342	0.24	
10039.00	89.690	359.300	6758.50	2688.73	2489.87	-1472.76	3265651.18	1406000.15	40.4439476	-104.5455341	0.28	
10134.00	89.660	359.400	6759.04	2782.73	2584.86	-1473.84	3265650.10	1406095.14	40.4442084	-104.5455343	0.11	
10228.00	89.660	359.490	6759.59	2875.72	2678.85	-1474.75	3265649.19	1406189.13	40.4444664	-104.5455340	0.10	
10323.00	89.570	359.250	6760.23	2969.72	2773.85	-1475.80	3265648.14	1406284.11	40.4447271	-104.5455340	0.27	
10417.00	89.540	359.590	6760.96	3062.71	2867.84	-1476.75	3265647.19	1406378.10	40.4449851	-104.5455338	0.36	
10512.00	89.850	359.380	6761.47	3156.68	2962.83	-1477.60	3265646.34	1406473.09	40.4452459	-104.5455332	0.39	
10606.00	89.940	359.510	6761.64	3249.67	3056.83	-1478.51	3265645.43	1406567.09	40.4455039	-104.5455328	0.17	
10701.00	90.490	359.990	6761.28	3343.58	3151.83	-1478.93	3265645.01	1406662.08	40.4457647	-104.5455307	0.77	
10796.00	89.690	358.680	6761.13	3437.58	3246.82	-1480.03	3265643.91	1406757.07	40.4460254	-104.5455309	1.62	
10890.00	90.430	359.670	6761.04	3530.64	3340.80	-1481.38	3265642.56	1406851.05	40.4462834	-104.5455322	1.31	
10985.00	90.120	359.600	6760.58	3624.57	3435.80	-1481.99	3265641.95	1406946.04	40.4465442	-104.5455307	0.33	
11079.00	90.550	359.770	6760.03	3717.50	3529.80	-1482.50	3265641.44	1407040.04	40.4468022	-104.5455289	0.49	
11174.00	89.690	358.990	6759.83	3811.50	3624.79	-1483.53	3265640.41	1407135.03	40.4470630	-104.5455289	1.22	

REFERENCE WELLPATH IDENTIFICATION

Operator	NOBLE ENERGY, INC	Well	Reveille A34-788
Field	WELD COUNTY (NOBLE NAD 83 GRID)	API	0512350794
Facility	SEC.34-T06N-R64W	Wellbore	Reveille A34-788 AWB
Slot	SLOT#21 Reveille A34-788 (564'FSL & 1508'FWL,SEC.34)		

WELLPATH DATA (185 stations)

MD [ft]	Inclination [°]	Azimuth [°]	TVD [ft]	Vert Sect [ft]	North [ft]	East [ft]	Grid East [US ft]	Grid North [US ft]	Latitude	Longitude	DLS [°/100ft]	Comments
11269.00	89.850	359.520	6760.21	3905.52	3719.78	-1484.77	3265639.17	1407230.01	40.4473237	-104.5455297	0.58	
11363.00	90.000	359.850	6760.34	3998.46	3813.78	-1485.28	3265638.66	1407324.01	40.4475817	-104.5455279	0.39	
11458.00	89.570	359.230	6760.69	4092.41	3908.78	-1486.05	3265637.89	1407419.00	40.4478425	-104.5455270	0.79	
11552.00	90.370	359.780	6760.74	4185.39	4002.77	-1486.86	3265637.08	1407512.99	40.4481005	-104.5455263	1.03	
11647.00	90.150	359.390	6760.31	4279.34	4097.77	-1487.55	3265636.39	1407607.98	40.4483613	-104.5455251	0.47	
11741.00	89.850	359.000	6760.31	4372.39	4191.76	-1488.87	3265635.07	1407701.97	40.4486193	-104.5455262	0.52	
11836.00	90.250	359.810	6760.23	4466.38	4286.75	-1489.85	3265634.09	1407796.96	40.4488800	-104.5455260	0.95	
11931.00	90.120	359.470	6759.92	4560.31	4381.75	-1490.45	3265633.49	1407891.95	40.4491408	-104.5455245	0.38	
12025.00	90.250	359.500	6759.62	4653.29	4475.74	-1491.30	3265632.64	1407985.95	40.4493988	-104.5455239	0.14	
12120.00	90.150	359.040	6759.29	4747.32	4570.74	-1492.51	3265631.43	1408080.93	40.4496596	-104.5455246	0.50	
12214.00	90.090	358.840	6759.09	4840.43	4664.72	-1494.25	3265629.69	1408174.91	40.4499176	-104.5455272	0.22	
12309.00	90.180	359.290	6758.86	4934.50	4759.71	-1495.80	3265628.14	1408269.90	40.4501784	-104.5455291	0.48	
12404.00	89.820	359.250	6758.86	5028.52	4854.70	-1497.01	3265626.93	1408364.88	40.4504391	-104.5455298	0.38	
12498.00	89.820	359.080	6759.16	5121.58	4948.69	-1498.38	3265625.56	1408458.87	40.4506971	-104.5455310	0.18	
12593.00	90.550	359.170	6758.85	5215.63	5043.68	-1499.83	3265624.11	1408553.85	40.4509579	-104.5455326	0.77	
12687.00	89.820	359.300	6758.55	5308.67	5137.67	-1501.08	3265622.86	1408647.84	40.4512159	-104.5455335	0.79	
12782.00	90.430	359.740	6758.34	5402.64	5232.66	-1501.88	3265622.06	1408742.83	40.4514767	-104.5455326	0.79	
12877.00	90.000	359.280	6757.99	5496.60	5327.66	-1502.69	3265621.25	1408837.82	40.4517374	-104.5455319	0.66	
12971.00	90.340	359.440	6757.71	5589.61	5421.65	-1503.74	3265620.20	1408931.81	40.4519954	-104.5455320	0.40	
13066.00	90.550	359.480	6756.97	5683.59	5516.64	-1504.63	3265619.31	1409026.80	40.4522562	-104.5455316	0.23	
13160.00	90.550	0.340	6756.07	5776.46	5610.64	-1504.78	3265619.16	1409120.79	40.4525142	-104.5455285	0.91	
13255.00	89.970	359.430	6755.64	5870.33	5705.64	-1504.97	3265618.97	1409215.79	40.4527749	-104.5455255	1.14	
13349.00	90.310	359.760	6755.41	5963.28	5799.63	-1505.64	3265618.30	1409309.78	40.4530329	-104.5455242	0.50	
13444.00	89.780	359.480	6755.33	6057.22	5894.63	-1506.27	3265617.67	1409404.78	40.4532937	-104.5455228	0.63	
13539.00	89.480	358.080	6755.94	6151.35	5989.60	-1508.29	3265615.65	1409499.75	40.4535544	-104.5455264	1.51	
13634.00	90.340	359.050	6756.09	6245.54	6084.57	-1510.67	3265613.27	1409594.71	40.4538152	-104.5455313	1.36	
13728.00	90.460	359.490	6755.44	6338.57	6178.56	-1511.87	3265612.07	1409688.70	40.4540732	-104.5455320	0.49	
13823.00	90.180	358.970	6754.91	6432.60	6273.55	-1513.14	3265610.80	1409783.68	40.4543339	-104.5455329	0.62	
13917.00	89.850	359.640	6754.88	6525.62	6367.54	-1514.28	3265609.66	1409877.67	40.4545919	-104.5455333	0.79	
14012.00	90.030	359.470	6754.98	6619.58	6462.54	-1515.02	3265608.92	1409972.66	40.4548527	-104.5455323	0.26	

REFERENCE WELLPATH IDENTIFICATION

Operator	NOBLE ENERGY, INC	Well	Reveille A34-788
Field	WELD COUNTY (NOBLE NAD 83 GRID)	API	0512350794
Facility	SEC.34-T06N-R64W	Wellbore	Reveille A34-788 AWB
Slot	SLOT#21 Reveille A34-788 (564'FSL & 1508'FWL,SEC.34)		

WELLPATH DATA (185 stations)

MD [ft]	Inclination [°]	Azimuth [°]	TVD [ft]	Vert Sect [ft]	North [ft]	East [ft]	Grid East [US ft]	Grid North [US ft]	Latitude	Longitude	DLS [°/100ft]	Comments
14107.00	90.000	359.380	6754.96	6713.56	6557.54	-1515.97	3265607.97	1410067.66	40.4551135	-104.5455321	0.10	
14201.00	89.880	358.540	6755.06	6806.67	6651.52	-1517.68	3265606.26	1410161.63	40.4553715	-104.5455346	0.90	
14296.00	90.280	0.910	6754.92	6900.57	6746.51	-1518.14	3265605.80	1410256.62	40.4556322	-104.5455325	2.53	
14391.00	90.220	2.530	6754.51	6993.93	6841.47	-1515.29	3265608.65	1410351.57	40.4558928	-104.5455186	1.71	
14485.00	90.120	3.080	6754.23	7085.95	6935.35	-1510.69	3265613.25	1410445.46	40.4561503	-104.5454984	0.59	
14580.00	89.940	1.270	6754.18	7179.16	7030.28	-1507.08	3265616.86	1410540.38	40.4564108	-104.5454818	1.91	
14675.00	90.220	0.530	6754.05	7272.76	7125.27	-1505.59	3265618.35	1410635.36	40.4566714	-104.5454728	0.83	
14770.00	89.540	359.150	6754.25	7366.64	7220.26	-1505.85	3265618.09	1410730.36	40.4569322	-104.5454701	1.62	
14864.00	89.570	357.940	6754.98	7459.83	7314.23	-1508.24	3265615.70	1410824.32	40.4571901	-104.5454750	1.29	
14959.00	89.910	357.290	6755.41	7554.21	7409.14	-1512.19	3265611.75	1410919.23	40.4574508	-104.5454855	0.77	
15053.00	89.880	359.130	6755.58	7647.47	7503.09	-1515.13	3265608.81	1411013.18	40.4577087	-104.5454925	1.96	
15147.00	89.910	0.670	6755.75	7740.35	7597.09	-1515.29	3265608.65	1411107.17	40.4579667	-104.5454894	1.64	
15242.00	89.780	0.630	6756.01	7834.01	7692.08	-1514.22	3265609.72	1411202.16	40.4582274	-104.5454819	0.14	
15337.00	89.690	0.320	6756.45	7927.73	7787.08	-1513.43	3265610.51	1411297.15	40.4584881	-104.5454754	0.34	
15431.00	89.940	0.420	6756.75	8020.49	7881.08	-1512.82	3265611.12	1411391.14	40.4587461	-104.5454695	0.29	
15526.00	89.350	358.930	6757.34	8114.41	7976.07	-1513.36	3265610.58	1411486.13	40.4590069	-104.5454678	1.69	
15621.00	89.940	1.700	6757.93	8208.16	8071.06	-1512.84	3265611.10	1411581.12	40.4592676	-104.5454622	2.98	
15715.00	89.600	359.950	6758.31	8300.79	8165.04	-1511.48	3265612.46	1411675.10	40.4595255	-104.5454537	1.90	
15810.00	89.910	1.220	6758.71	8394.47	8260.04	-1510.51	3265613.43	1411770.09	40.4597862	-104.5454466	1.38	
15905.00	90.030	0.970	6758.76	8488.01	8355.02	-1508.70	3265615.24	1411865.07	40.4600468	-104.5454364	0.29	
15999.00	90.000	1.450	6758.74	8580.54	8449.00	-1506.71	3265617.23	1411959.04	40.4603047	-104.5454256	0.51	
16094.00	90.090	2.270	6758.66	8673.85	8543.95	-1503.63	3265620.31	1412053.99	40.4605652	-104.5454109	0.87	
16188.00	89.880	0.450	6758.69	8766.33	8637.92	-1501.40	3265622.54	1412147.95	40.4608231	-104.5453992	1.95	
16283.00	90.280	359.300	6758.56	8860.20	8732.91	-1501.61	3265622.33	1412242.95	40.4610838	-104.5453963	1.28	
16377.00	89.850	0.590	6758.45	8953.07	8826.91	-1501.70	3265622.24	1412336.94	40.4613418	-104.5453930	1.45	
16472.00	90.180	359.150	6758.42	9046.94	8921.91	-1501.91	3265622.03	1412431.93	40.4616026	-104.5453901	1.56	
16566.00	90.060	359.710	6758.23	9139.94	9015.90	-1502.85	3265621.09	1412525.92	40.4618606	-104.5453898	0.61	
16661.00	90.340	358.970	6757.90	9233.94	9110.90	-1503.94	3265620.00	1412620.91	40.4621213	-104.5453901	0.83	
16756.00	90.520	0.500	6757.18	9327.85	9205.89	-1504.38	3265619.56	1412715.90	40.4623821	-104.5453880	1.62	
16850.00	90.400	0.210	6756.43	9420.61	9299.88	-1503.80	3265620.14	1412809.89	40.4626401	-104.5453822	0.33	

REFERENCE WELLPATH IDENTIFICATION

Operator	NOBLE ENERGY, INC	Well	Reveille A34-788
Field	WELD COUNTY (NOBLE NAD 83 GRID)	API	0512350794
Facility	SEC.34-T06N-R64W	Wellbore	Reveille A34-788 AWB
Slot	SLOT#21 Reveille A34-788 (564'FSL & 1508'FWL,SEC.34)		

WELLPATH DATA (185 stations) † = interpolated, ‡ = extrapolated station

MD [ft]	Inclination [°]	Azimuth [°]	TVD [ft]	Vert Sect [ft]	North [ft]	East [ft]	Grid East [US ft]	Grid North [US ft]	Latitude	Longitude	DLS [°/100ft]	Comments
17039.00	90.120	0.750	6755.57	9607.05	9488.88	-1502.22	3265621.72	1412998.88	40.4631587	-104.5453692	0.32	
17134.00	90.370	0.260	6755.16	9700.75	9583.87	-1501.38	3265622.56	1413093.87	40.4634194	-104.5453625	0.58	
17228.00	90.490	0.760	6754.46	9793.47	9677.86	-1500.54	3265623.40	1413187.86	40.4636774	-104.5453559	0.55	
17260.00	89.970	0.050	6754.33	9825.05	9709.86	-1500.32	3265623.62	1413219.85	40.4637652	-104.5453539	2.75	LAST BH MWD SURVEY
17284.00‡	89.970	0.050	6754.34	9848.75	9733.86	-1500.29	3265623.65	1413243.85	40.4638311	-104.5453528	0.00	PROJECTION TO BIT

HOLE & CASING SECTIONS - Ref Wellbore: Reveille A34-788 AWB Ref Wellpath: Reveille A34-788 AWP

String/Diameter	Start MD [ft]	End MD [ft]	Interval [ft]	Start TVD [ft]	End TVD [ft]	Start N/S [ft]	Start E/W [ft]	End N/S [ft]	End E/W [ft]
9.625in Casing Surface	30.00	1927.00	1897.00	30.00	1926.96	0.02	-0.03	-2.04	-3.12

REFERENCE WELLPATH IDENTIFICATION

Operator	NOBLE ENERGY, INC	Well	Reveille A34-788
Field	WELD COUNTY (NOBLE NAD 83 GRID)	API	0512350794
Facility	SEC.34-T06N-R64W	Wellbore	Reveille A34-788 AWB
Slot	SLOT#21 Reveille A34-788 (564'FSL & 1508'FWL,SEC.34)		

TARGETS

Name	TVD [ft]	North [ft]	East [ft]	Grid East [US ft]	Grid North [US ft]	Latitude	Longitude	Shape
SEC.26-T06N-R64W	0.00	21.86	-0.23	3267123.65	1403532.24	40.4371300	-104.5403400	polygon
	2D Polygon: dimensions not calculated							
SEC.27-T06N-R64W	0.00	21.86	-0.23	3267123.65	1403532.24	40.4371300	-104.5403400	polygon
	2D Polygon: dimensions not calculated							
SEC.34-T06N-R64W	0.00	21.86	-0.23	3267123.65	1403532.24	40.4371300	-104.5403400	polygon
	2D Polygon: dimensions not calculated							
SEC.35-T06N-R64W	0.00	21.86	-0.23	3267123.65	1403532.24	40.4371300	-104.5403400	polygon
	2D Polygon: dimensions not calculated							
Reveille A34-788 TPZ REV-2 (460'FSL & 55'FWL,SEC.34)	6741.00	-133.66	-1449.95	3265673.99	1403376.73	40.4367461	-104.5455536	point
Reveille A34-788 BHL REV-1 (200'FNL & 74'FWL,SEC.27)	6756.00	9735.74	-1533.78	3265590.16	1413245.73	40.4638372	-104.5454731	point
Reveille A34-788 TPZ REV-1 (460'FSL & 55'FWL,SEC.34)	6756.00	-133.66	-1449.95	3265673.99	1403376.73	40.4367461	-104.5455536	point

REFERENCE WELLPATH IDENTIFICATION

Operator	NOBLE ENERGY, INC	Well	Reveille A34-788
Field	WELD COUNTY (NOBLE NAD 83 GRID)	API	0512350794
Facility	SEC.34-T06N-R64W	Wellbore	Reveille A34-788 AWB
Slot	SLOT#21 Reveille A34-788 (564'FSL & 1508'FWL,SEC.34)		

WELLPATH COMPOSITION - Ref Wellbore: Reveille A34-788 AWB Ref Wellpath: Reveille A34-788 AWP

Start MD [ft]	End MD [ft]	Positional Uncertainty Model	Log Name/Comment	Wellbore	Survey Date
0.00	1921.00	Gyrodatta 2015 - GC+DROP+COND	Gyrodatta 2015 - GC+DROP+COND 13-1/2" <82 - 1921>	Reveille A34-788 AWB	2/11/2021
1921.00	17284.00	OWSG MWD rev2 (MS+IFR1) NOBLE	OWSG MWD rev2 (MS+IFR1) NOBLE 8-1/2" <1997 - 17260>	Reveille A34-788 AWB	2/18/2021

REFERENCE WELLPATH IDENTIFICATION

Operator	NOBLE ENERGY, INC	Well	Reveille A34-788
Field	WELD COUNTY (NOBLE NAD 83 GRID)	API	0512350794
Facility	SEC.34-T06N-R64W	Wellbore	Reveille A34-788 AWB
Slot	SLOT#21 Reveille A34-788 (564'FSL & 1508'FWL,SEC.34)		

WELLPATH COMMENTS

MD [ft]	Inclination [°]	Azimuth [°]	TVD [ft]	Comment
82.00	0.380	309.290	82.00	FIRST GYRODATA SURVEY
1921.00	0.670	222.760	1920.96	LAST GYRODATA SURVEY
1997.00	1.180	245.370	1996.95	FIRST BH MWD SURVEY
17260.00	89.970	0.050	6754.33	LAST BH MWD SURVEY
17284.00	89.970	0.050	6754.34	PROJECTION TO BIT