



Gamma Ray

LWD MEMORY LOG

Scale: Company: Noble Energy

1:240 Well: Reveille A34-788

True Vertical Depth Field: Wattenberg

Depth Reference: County: Weld Country: United States

Driller's Depth State: Colorado

Status: Surface Location: 40° 26' 13.452" N Other Services:

Final Print Latitude: 104° 32' 25.224" W

API No: 05-123-50794-00 Longitude:

Job ID: 110727937 SEC: 34 TWN: 6N RGE: 64W

Permanent Datum (P.D.): Mean Sea Level Elevation: 0.00 ft Elev. KB: N/A

Log Measured From: Rig Floor Above P.D.: 4661.00 ft Elev. DF: 4661.00 ft

Dates Interval Magnetic Field Reference

From: 2021-02-16	Drilled (ft)	Logged (ft)	Azi Reference North: Grid Dip Angle: (deg) 66.81		
To: 2021-02-19	Top: 1937.00	Top: 1937.00	Total Magnetic Field Strength: (nT) 51961		
Spud: 2021-02-04	Bottom: 17284.00	Bottom: 17271.00	Mag to Reference North Correction: (deg) 7.12		

Borehole Record

Casing Record

Hole Size (in)	From (ft)	To (ft)	Size (in)	Weight (lb/ft)	From (ft)	To (ft)
13.500	30.00	1937.00	9.625	36.00	30.00	1927.00
8.500	1937.00	17284.00				

Mud Record

Deviation Record

Type	From (ft)	To (ft)	Hole Size (in)	Interval (ft)	Inc Az (Start)	Inc Az (End)
Oil Based Mud	1937.00	17284.00	8.500	15347.00	0.67 222.76	89.97 0.05

Acquisition System Software Version

Other

Cadence	RT 5.8	Rig: H&P 517
Plot Studio	5.8.9018.1	Contractor: Helmerich & Payne Drilling Co
		District: RMA Unit: D&E

(C) 2020 Baker Hughes Company - All rights reserved. Baker Hughes and its affiliates provides this information on an "as is" basis for general information purposes and believes it to be accurate as of the date of publication. Baker Hughes does not make any representation as to the accuracy or completeness of the information and makes no warranties of any kind, specific, implied or oral, to the fullest extent permissible by law, including those of merchantability and fitness for a particular purpose or use. Baker Hughes hereby disclaims any and all liability for any direct, indirect, consequential or special damages, claims for lost profits, or third party claims arising from the use of the information, whether a claim is asserted in contract, tort, or otherwise. The Baker Hughes logo is a trademark of Baker Hughes Company.

Log Run Summary

Run No	Bit Run No.	Bit Size (in)	Bit Type	Bit Gauge Length (in)	Assembly Type	Logged Interval		Bit Depth Interval		Date / Time		Circ. Hours (h)
						Top (ft)	Bottom (ft)	From (ft)	To (ft)	Start Logging	End Logging	
1	1	8.500	PDC	3.00	AutoTrak Curve	1937.00	15045.00	1937.00	15058.00	2021-02-16 16:21	2021-02-18 20:35	48.03
2	2	8.500	PDC	3.00	AutoTrak Curve	15045.00	17271.00	15058.00	17284.00	2021-02-19 11:53	2021-02-19 19:20	9.79

Crew

Name	Arrive	Depart	Name	Arrive	Depart	Name	Arrive	Depart
------	--------	--------	------	--------	--------	------	--------	--------

	Wellsite	Wellsite		Wellsite	Wellsite		Wellsite	Wellsite
Tien Bui	2021-02-15	2021-02-20						

Mud Properties Record

Date / Time	Run No.	Depth (ft)	Mud Type	Density (ppg)	Viscosity (cP)	pH	Fluid Loss (cm3)	Oil / Water	Source	Total Chlorides (ppm)	K+ (%)
2021-02-15 17:05	1	1937.00	Oil Based Mud	9.2	10	N/A	20.0	79.5/20.5	Active Pit	27000	0.00
2021-02-17 11:09	1	6253.00	Oil Based Mud	9.5	12	N/A	15.7	77.6/22.4	Active Pit	28500	0.00
2021-02-18 09:12	1	12180.00	Oil Based Mud	9.6	13	N/A	17.4	78.2/21.8	Active Pit	27500	0.00
2021-02-19 05:11	2	15057.00	Oil Based Mud	9.6	13	N/A	17.4	78.2/21.8	Active Pit	27000	0.00

Equipment and Service Data

Run No.	Tool	Serial Number	Measurement	Sensor Offset (ft)	Bit Offset (ft)	Max O.D. (in)	Min I.D. (in)
1	AutoTrak Curve Steering Unit	14949228	Near Bit VSS	5.93	6.78	7.000	4.330
1	AutoTrak Curve Steering Unit	14949228	Near Bit Inclination	5.93	6.78	7.000	4.330
1	AutoTrak Curve MWD	12398256	Gamma (single)	2.75	12.95	7.000	3.250
1	AutoTrak Curve MWD	12398256	Directional (mag)	12.27	22.47	7.000	3.250
2	AutoTrak Curve Steering Unit	14262247	Near Bit Inclination	5.93	6.78	7.000	4.330
2	AutoTrak Curve Steering Unit	14262247	Near Bit VSS	5.93	6.78	7.000	4.330
2	AutoTrak Curve MWD	12570158	Gamma (single)	2.75	12.95	7.000	3.250
2	AutoTrak Curve MWD	12570158	Directional (mag)	12.27	22.47	7.000	3.250

Service and Tool Mnemonics

Mnemonic	Name	Description
ATC SU	AutoTrak Curve SU	Auto Trak Curve Steering Unit
ATC MWD	AutoTrak Curve MWD	Auto Trak Curve MWD
ATC LCPM	AutoTrak Curve LCPM	Auto Trak Curve LCPM

Comments

1	Depth measurements were obtained from a depth control system not supplied or operated by Baker Hughes. Due to lack of control by Baker Hughes logging engineers, depth calibrations and measurements could not be independently verified.
2	Baker Hughes LWD Run 1 utilized 6 ¾ inch NaviGamma service (Gamma Ray and Directional) behind a 8 1/2 inch bit and rotary steerable assembly from 1960 to 16493 feet MD (1960 to 5954 feet TVD).
3	The Gamma Ray Apparent (GRAM) data is presented 0 to 300 API, per the customer's request.
4	Several gaps appear in the log due to drilling ahead before the assembly had time to properly power on.

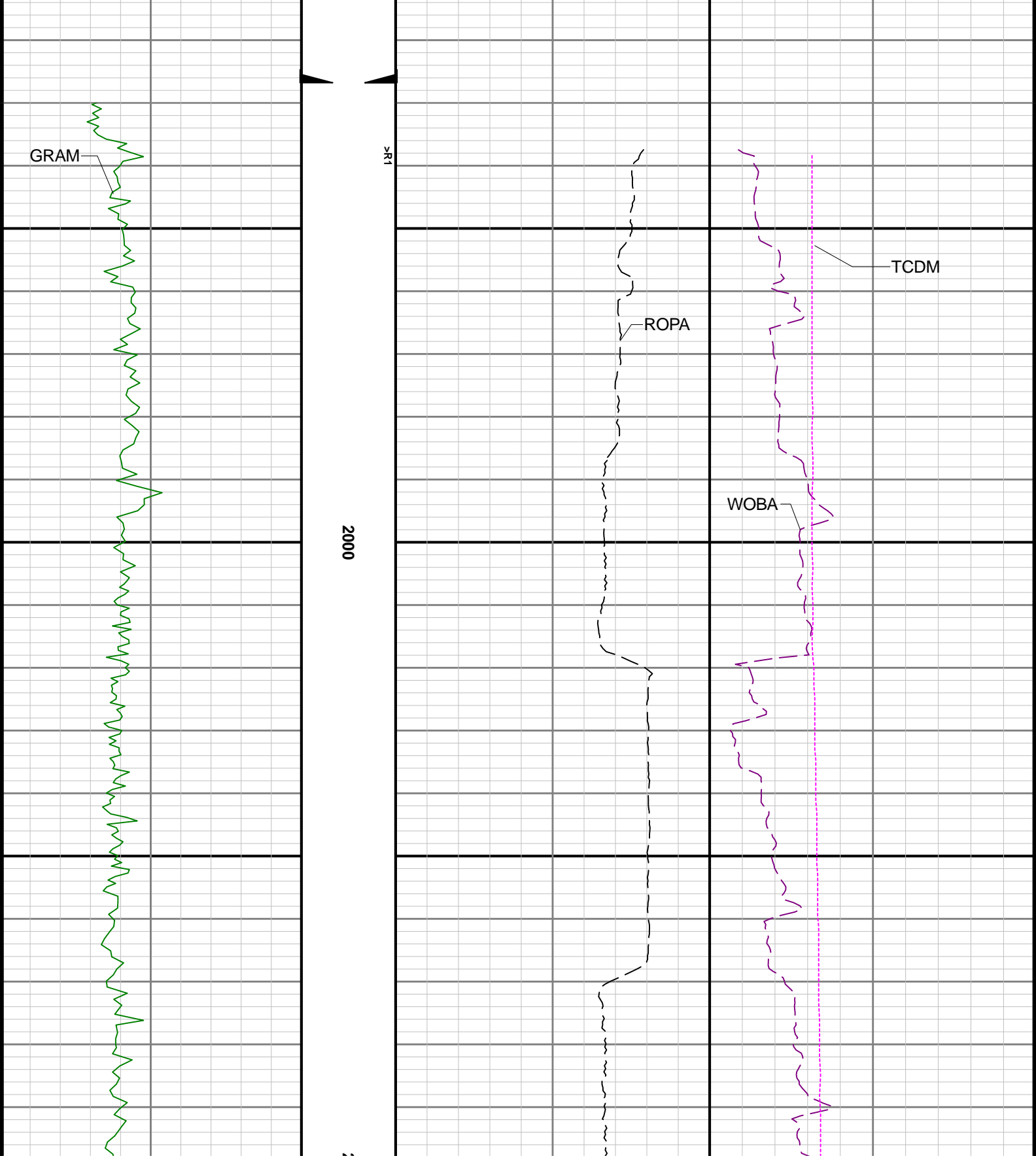
Remarks

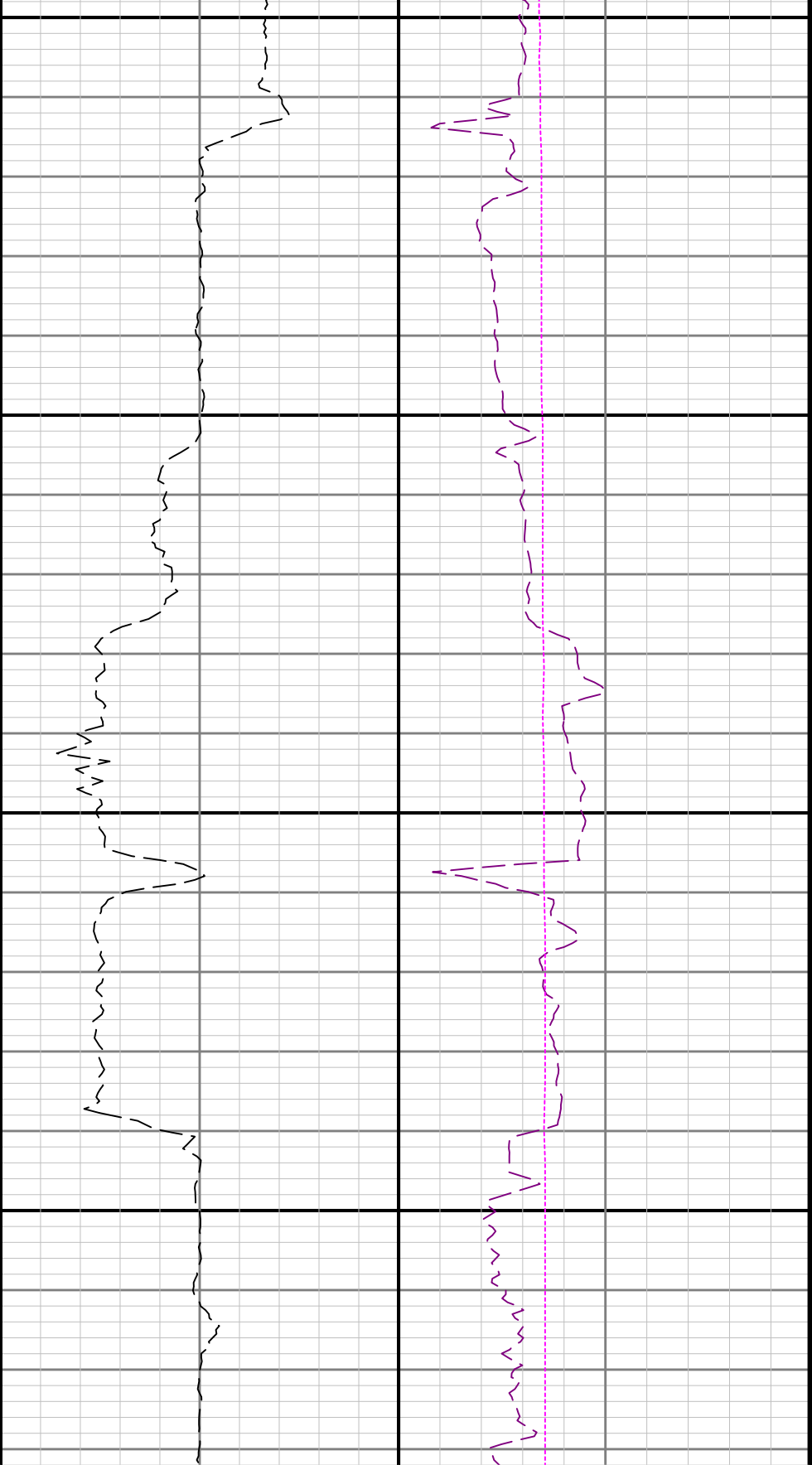
Number	Depth (ft)	Hole Section (in)	Run No.	Remark
--------	---------------	----------------------	---------	--------

Curve Mnemonics

Presented Curves	Description	Units
ROPA	Depth Averaged ROP 3 ft Average	ft/h
WOBA	Weight on Bit - Average 1 ft Average	klb
GRAM	Gamma Ray - Apparent - Memory 0.5 ft Average	API
TCDM	Directional Real-Time Survey Temperature	degF

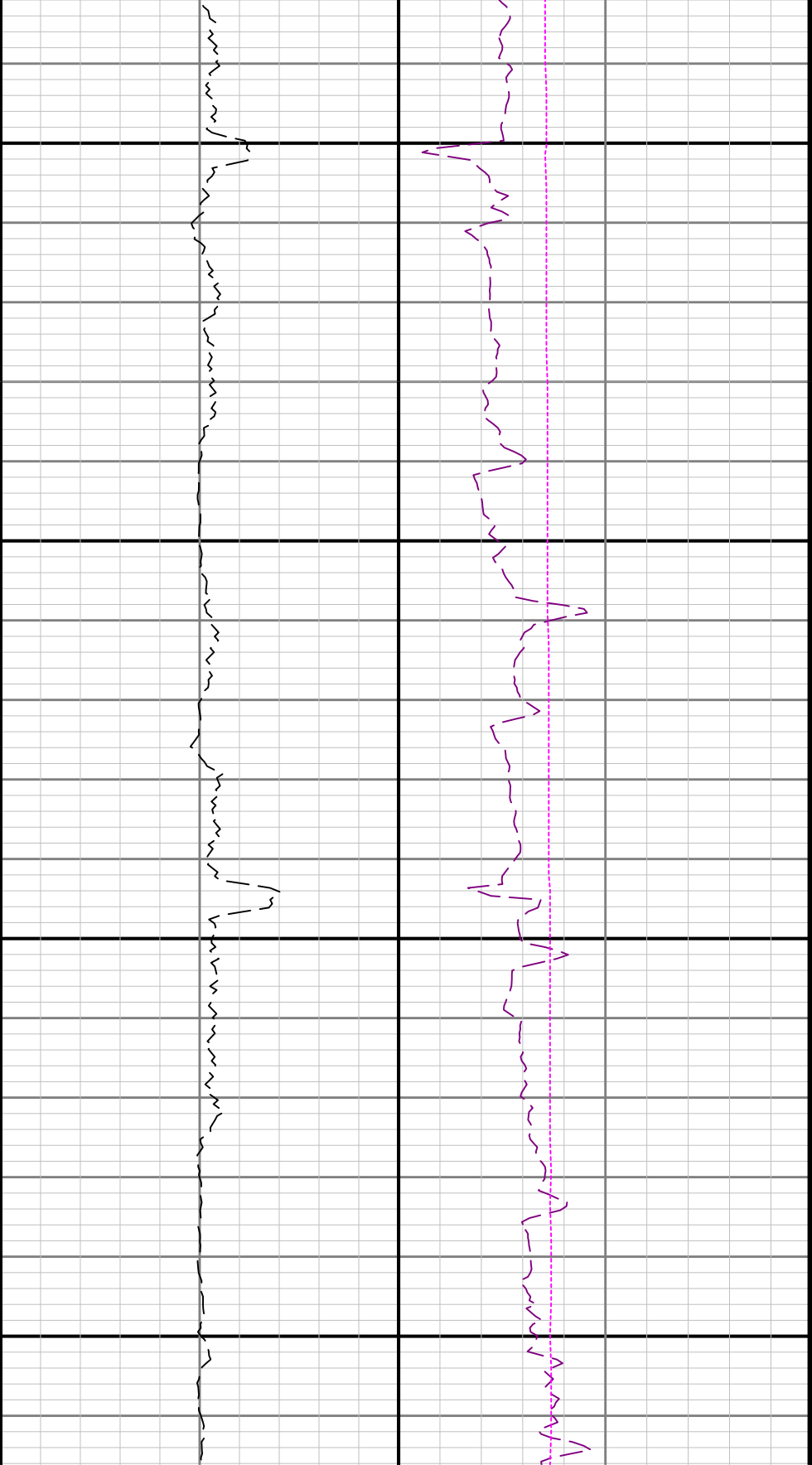
Gamma Ray - Apparent 0.5 ft Average GRAM	TVD 1:240 feet	Depth Averaged ROP 3 ft Average ROPA	Weight On Bit, Average 1 ft Average WOBA
0 300		1000 0	0 50
API		ft/h	klb
			Downhole Temperature TCDM
			0 300
			degF





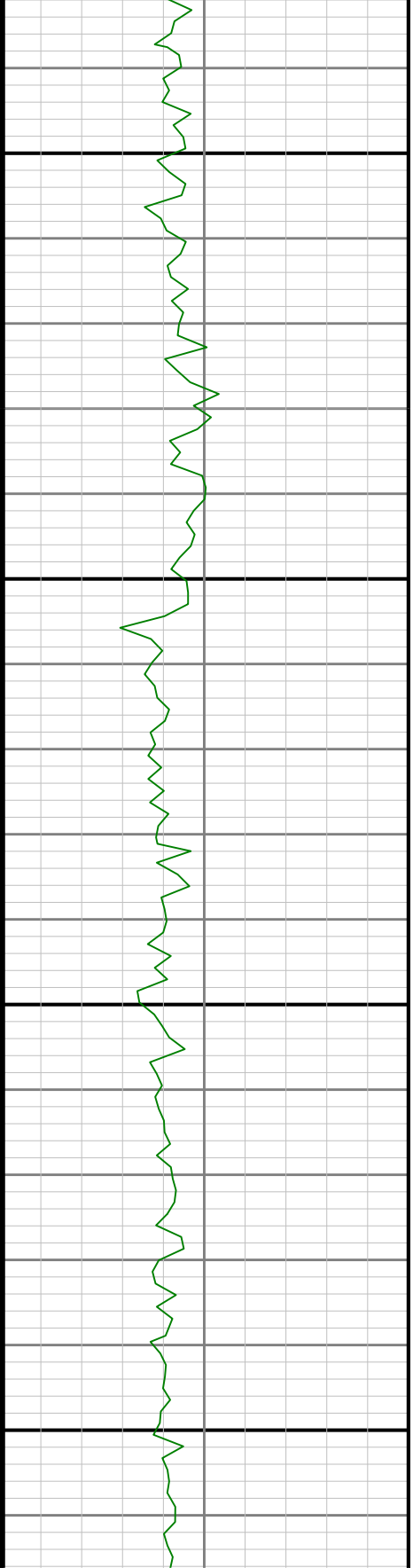
2100

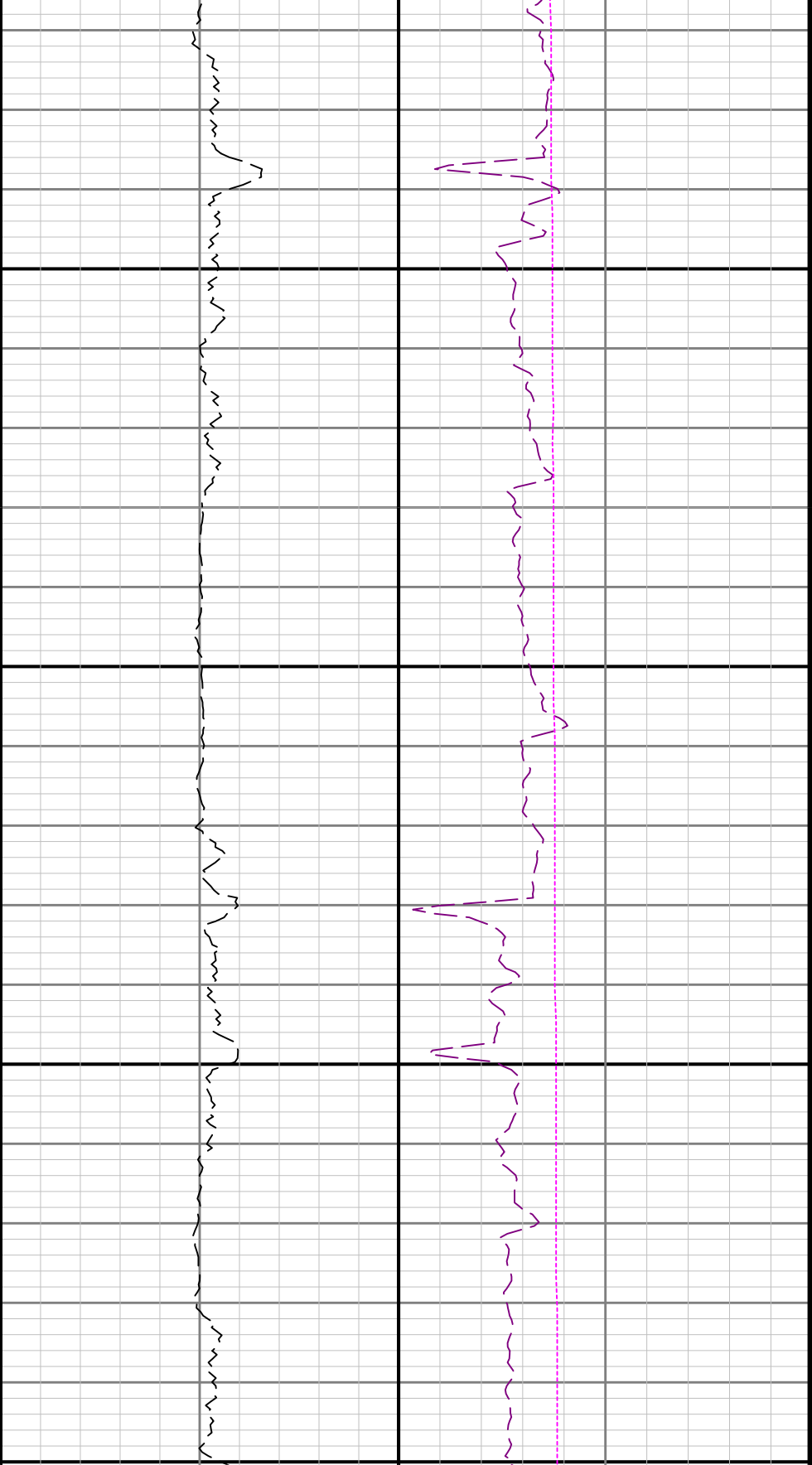
2200



2300

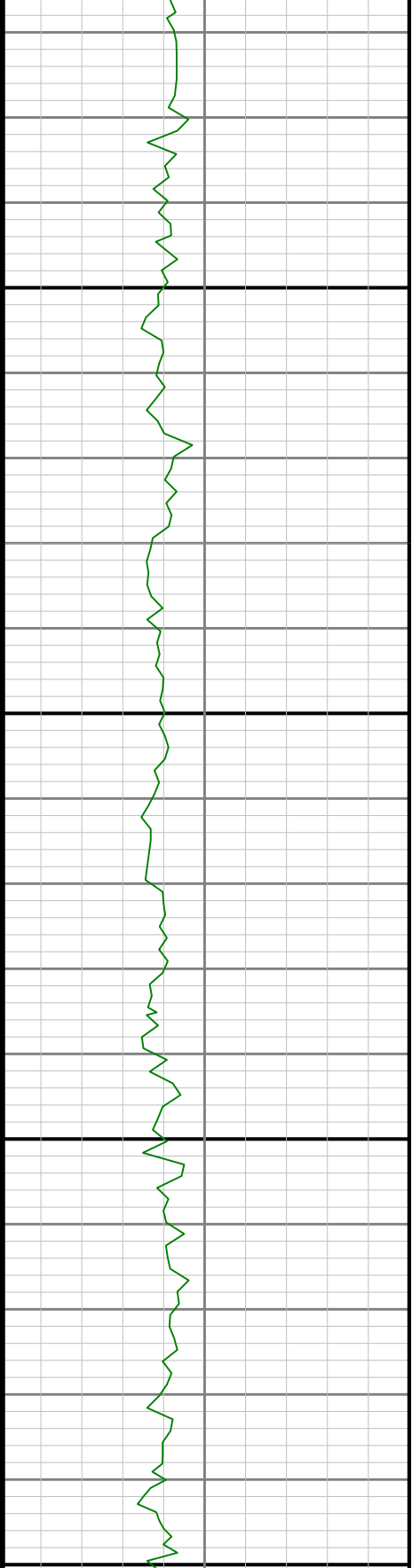
2400

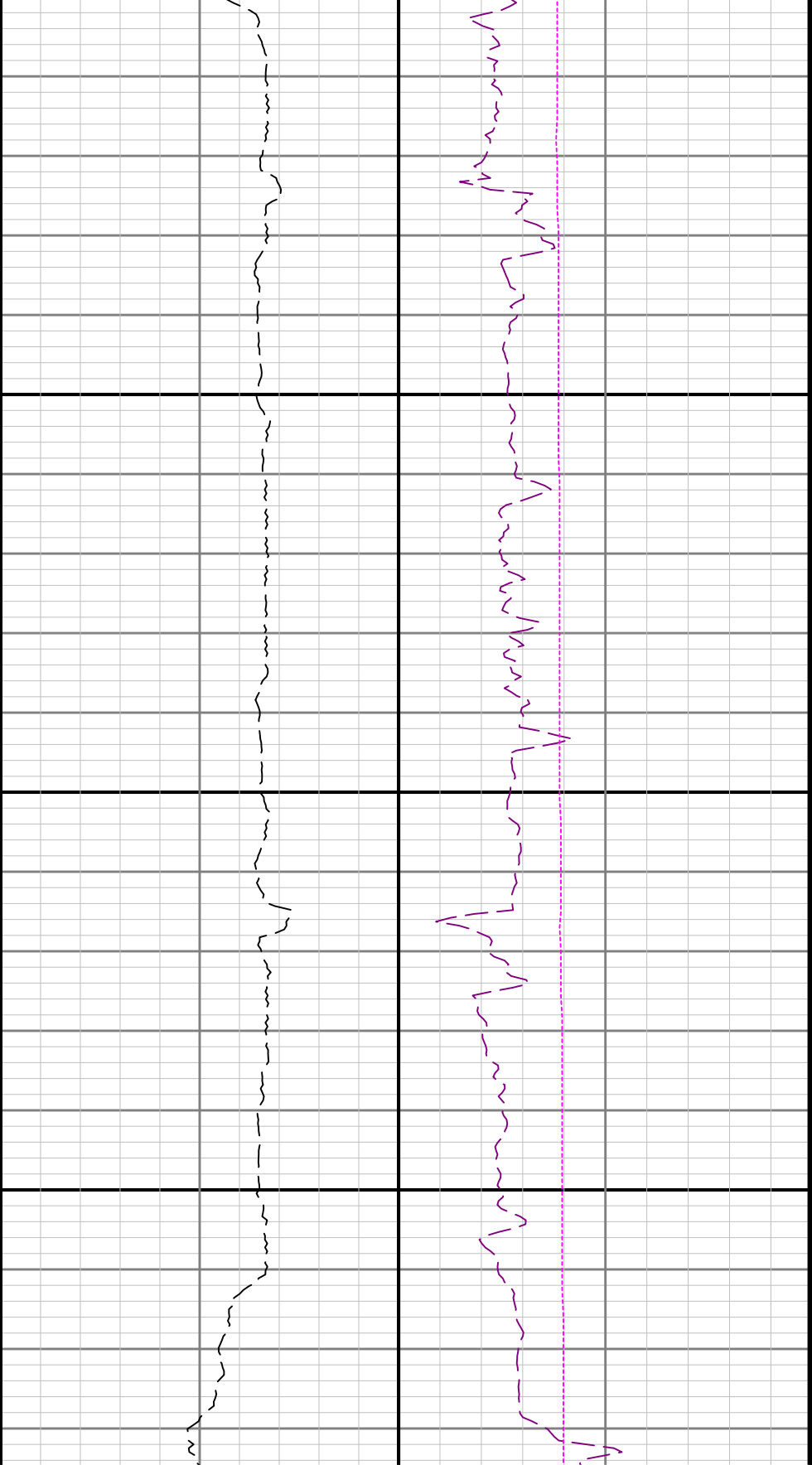




2500

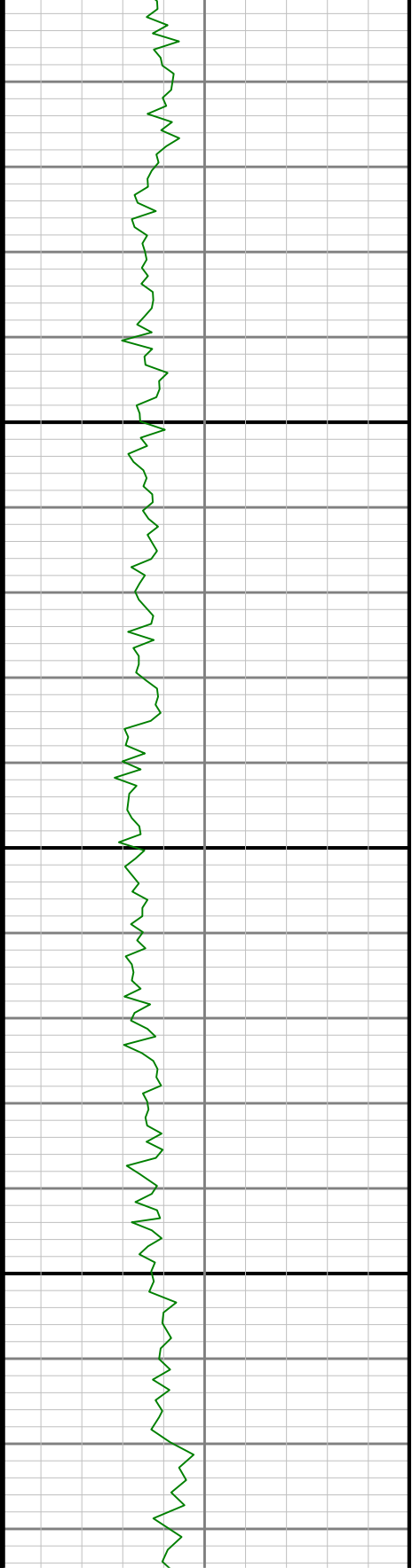
2600

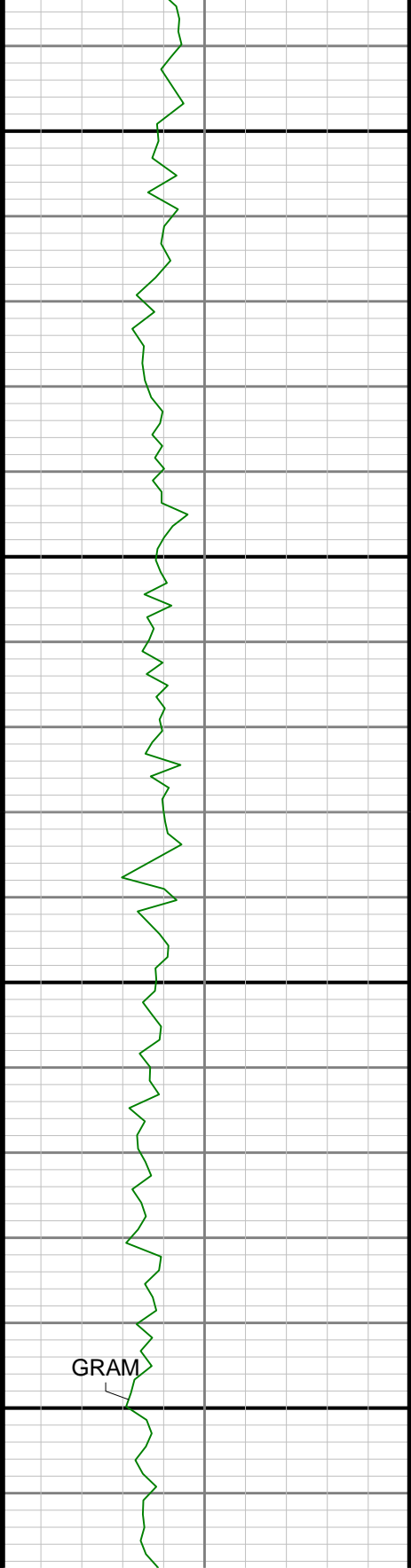




2700

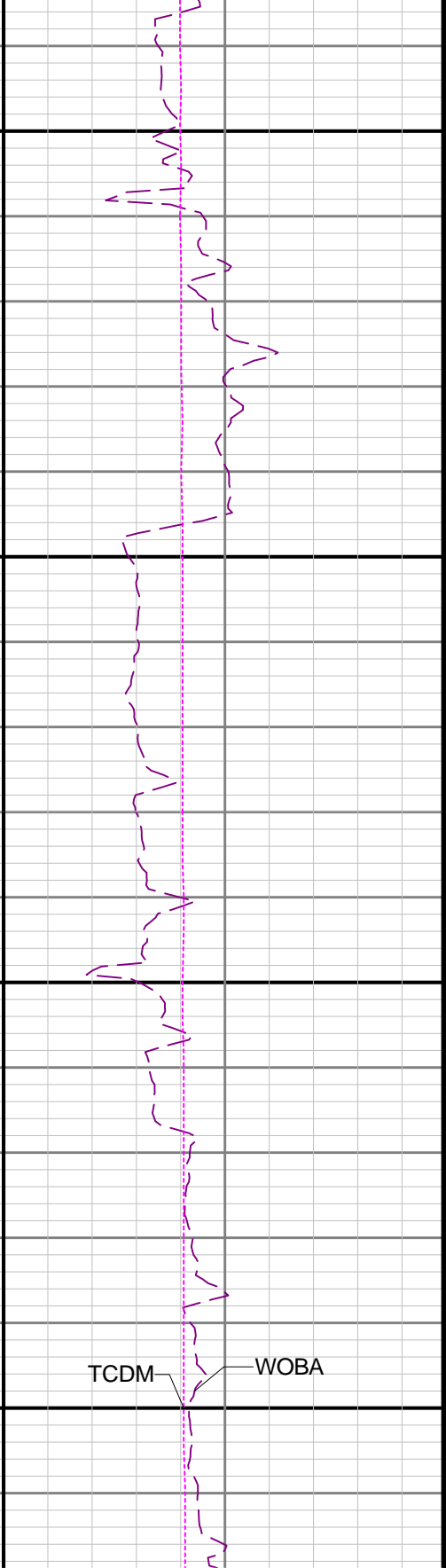
2800

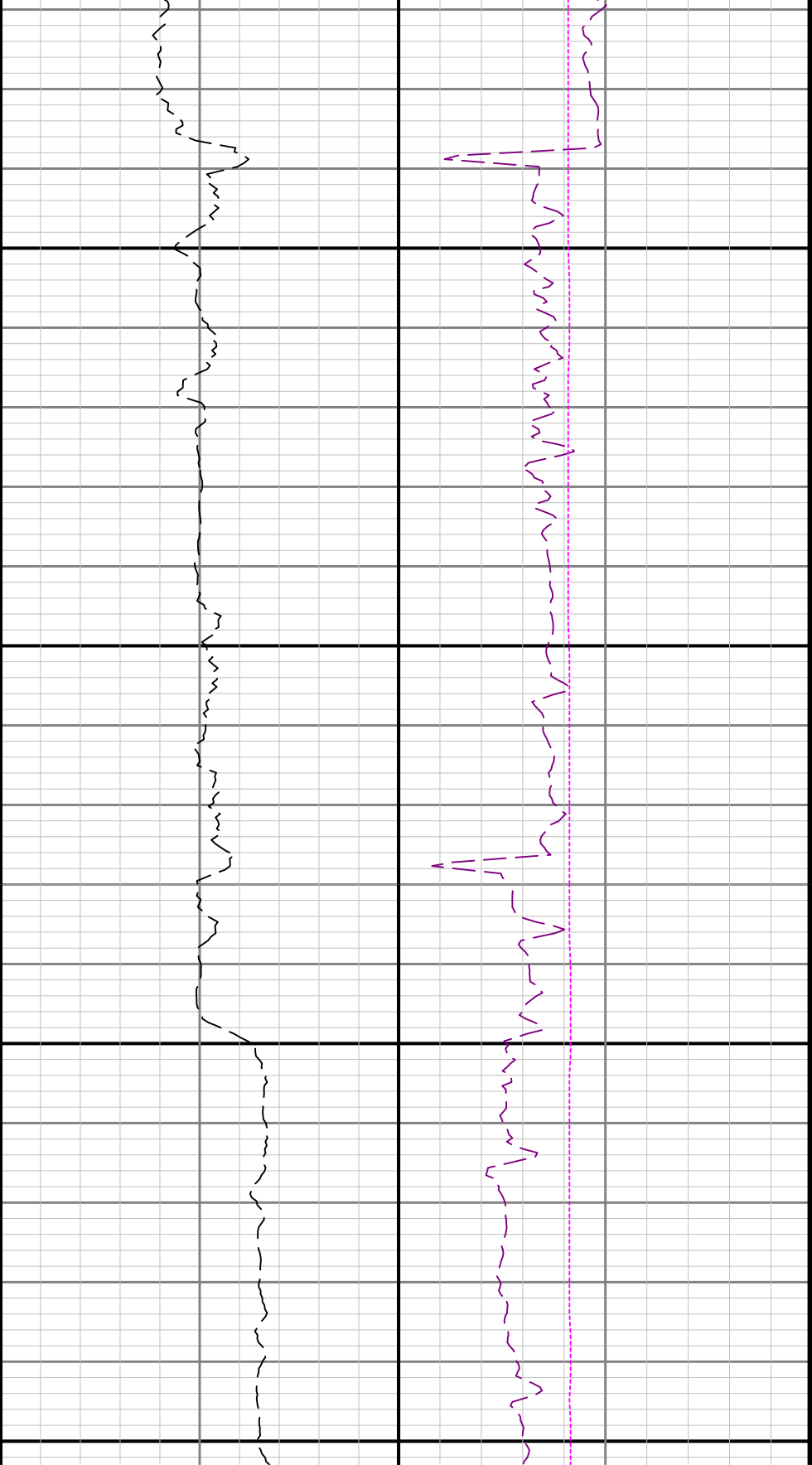




2900

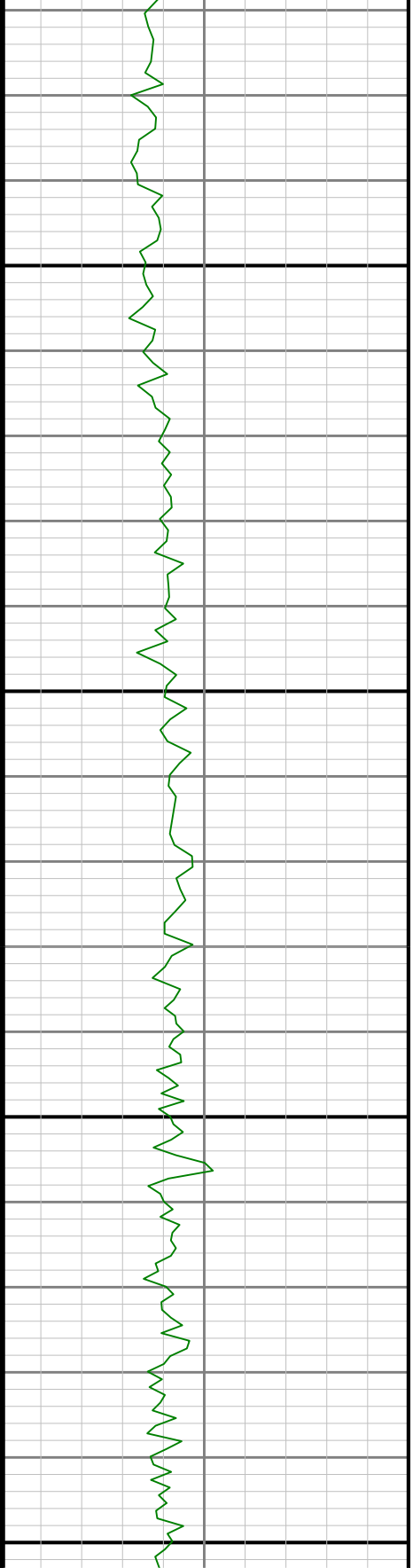
3000

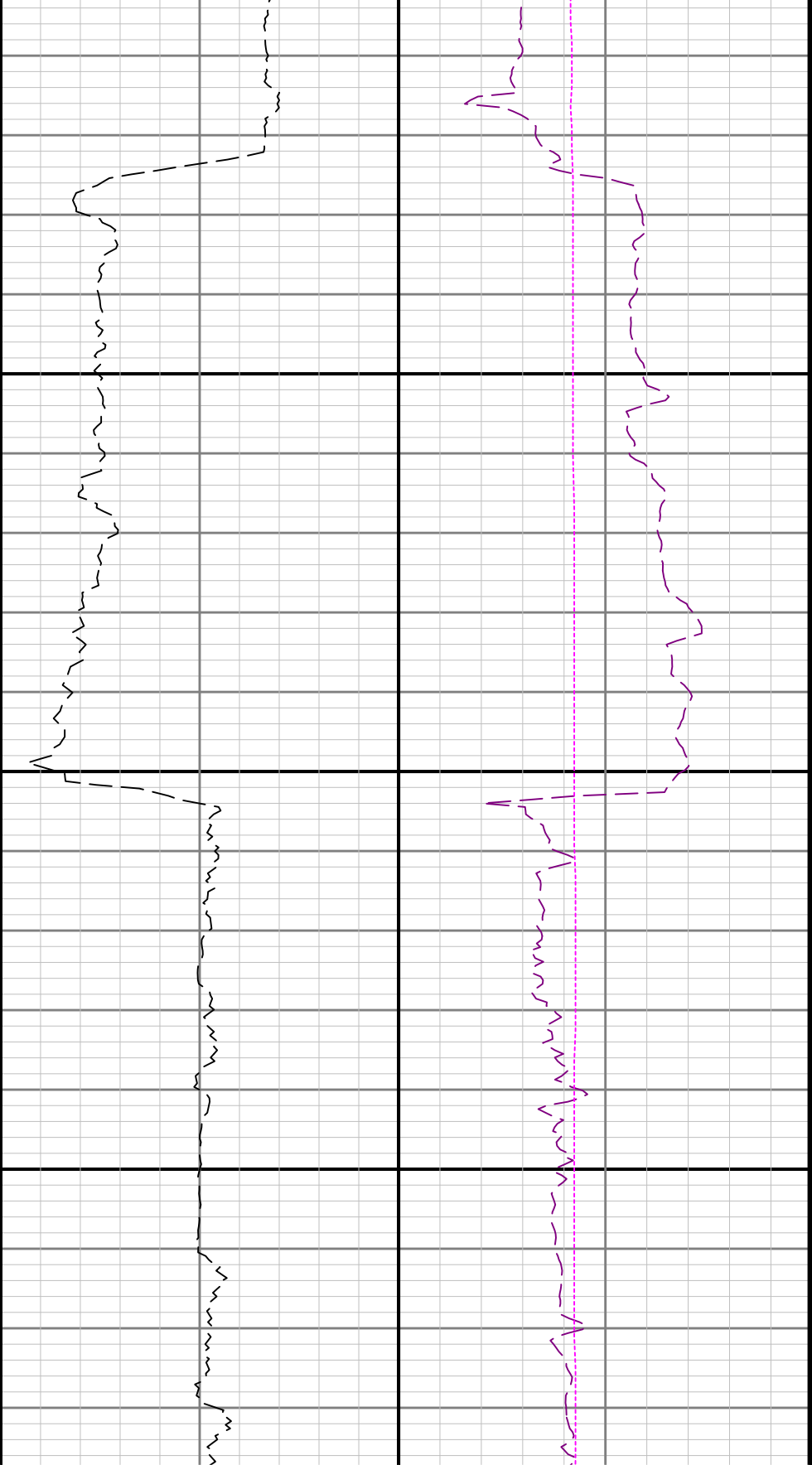




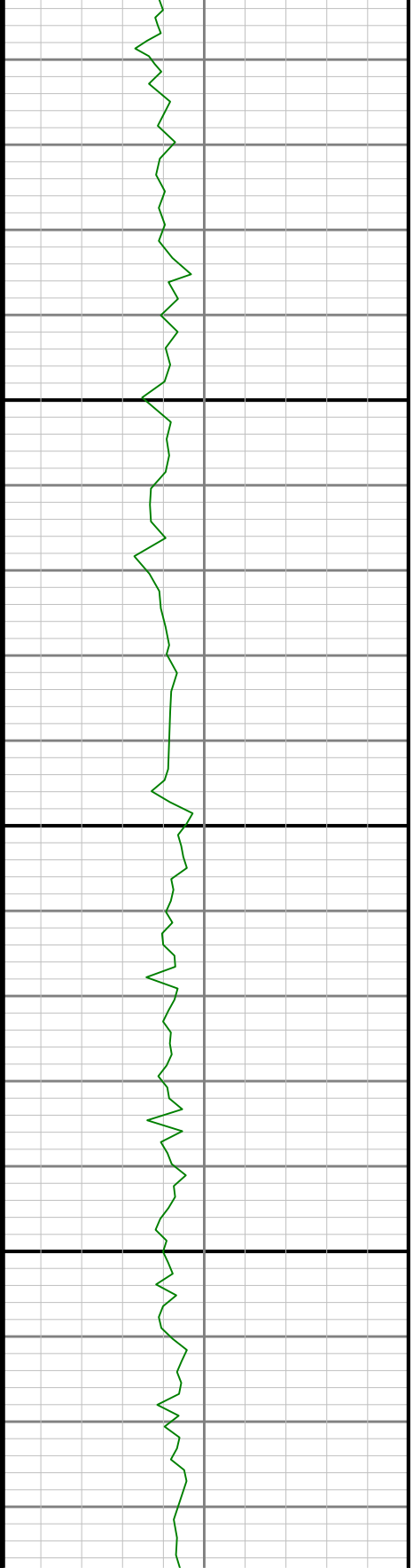
3100

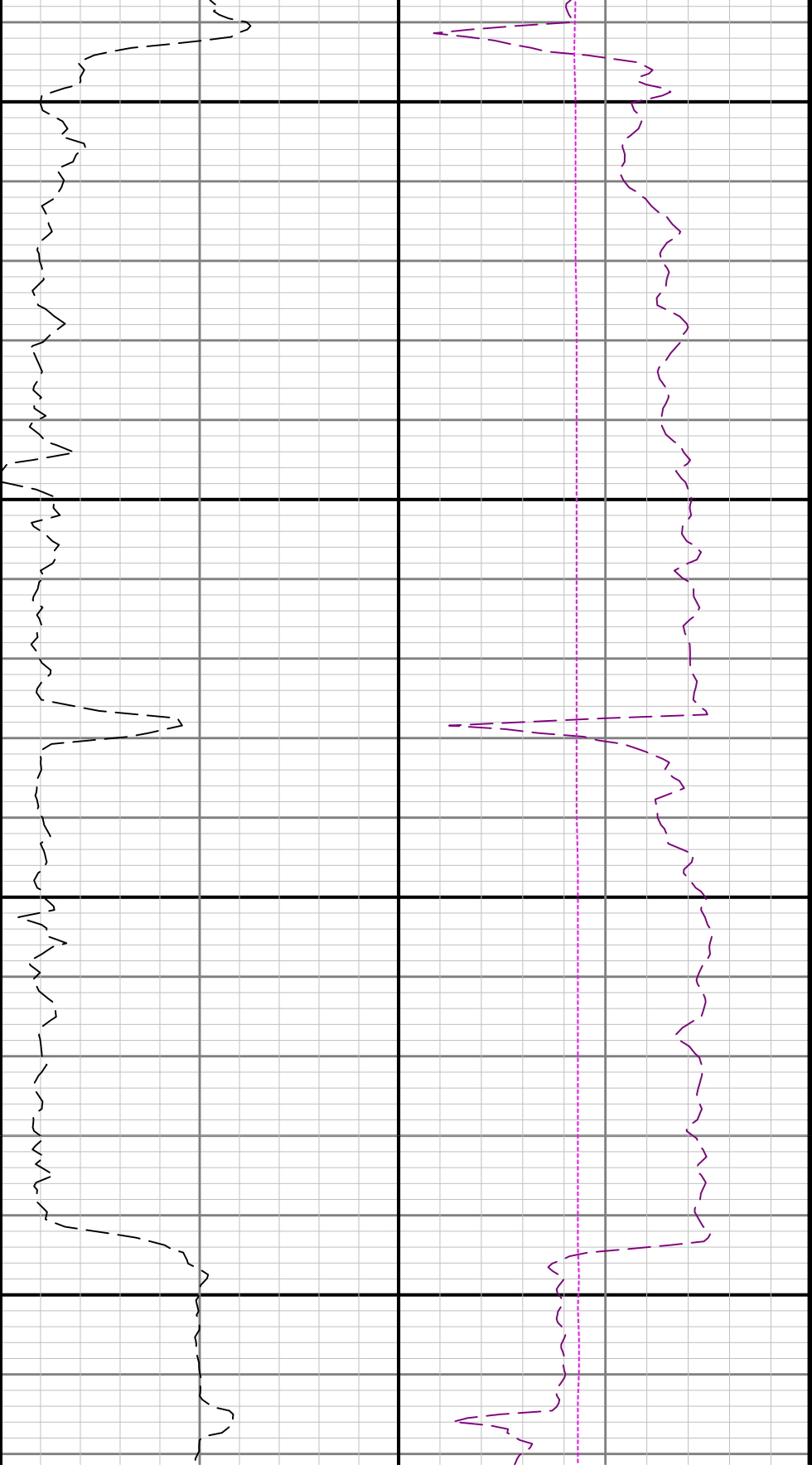
3200





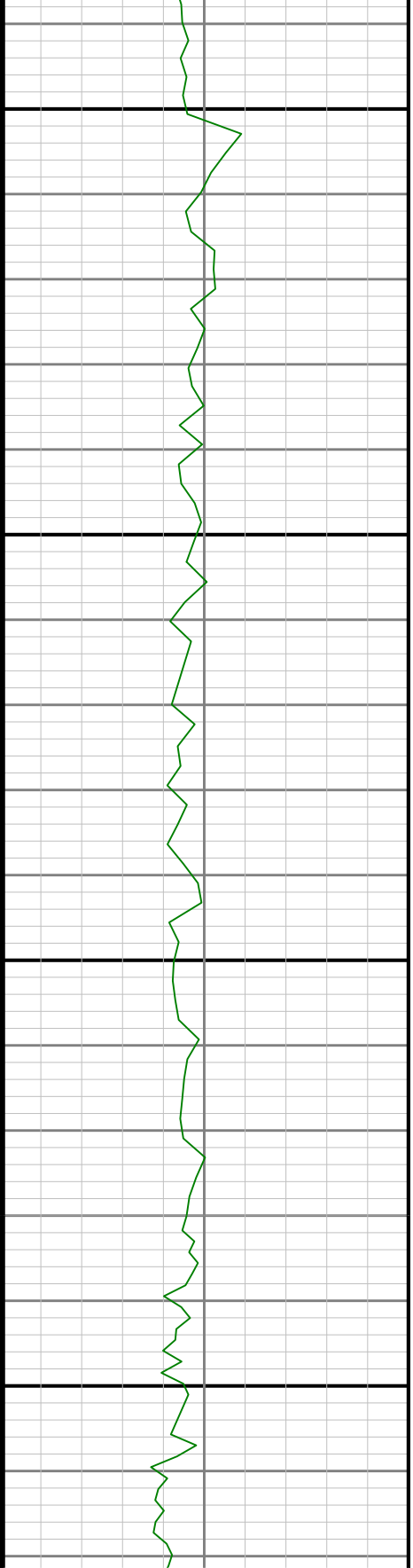
3300

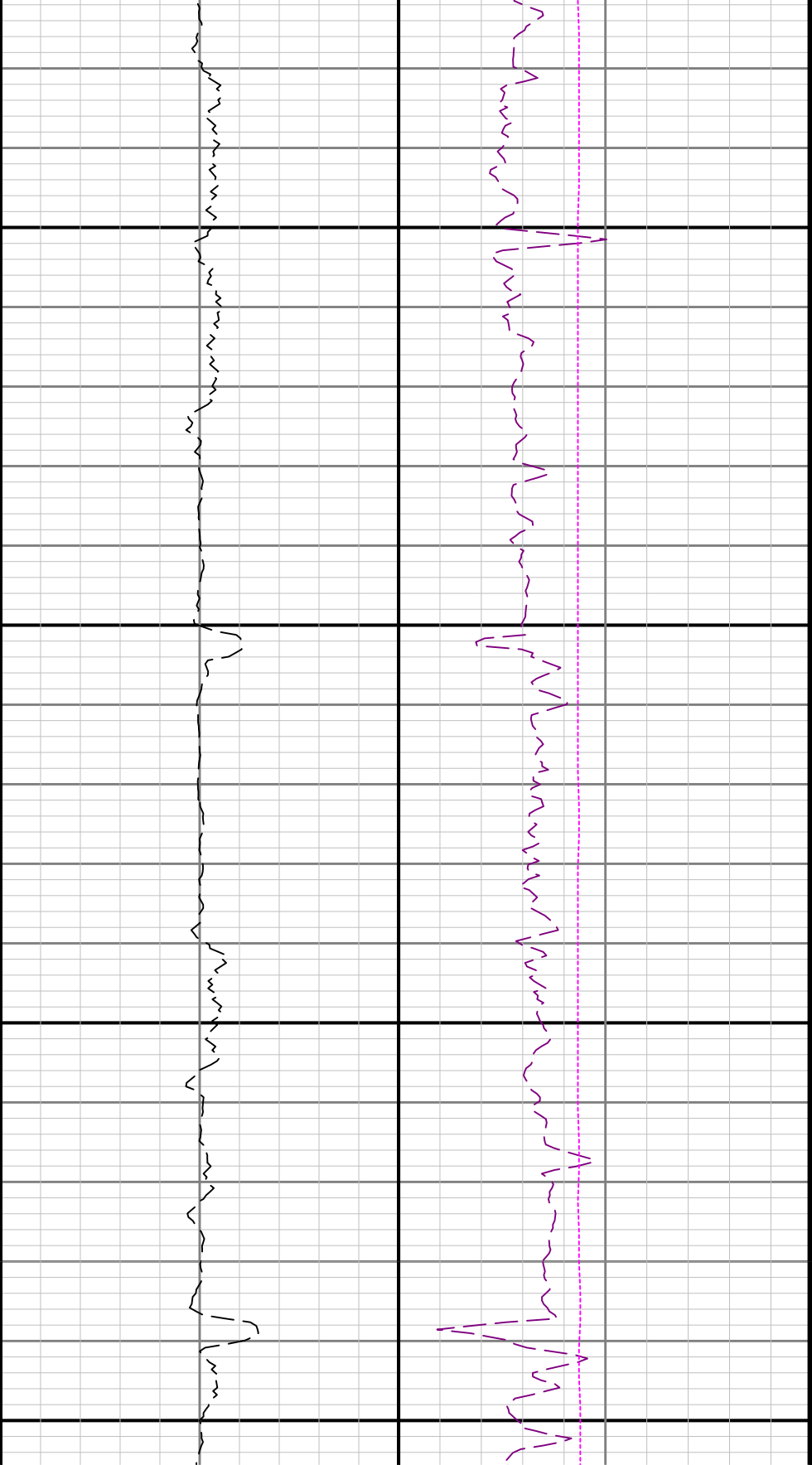




3400

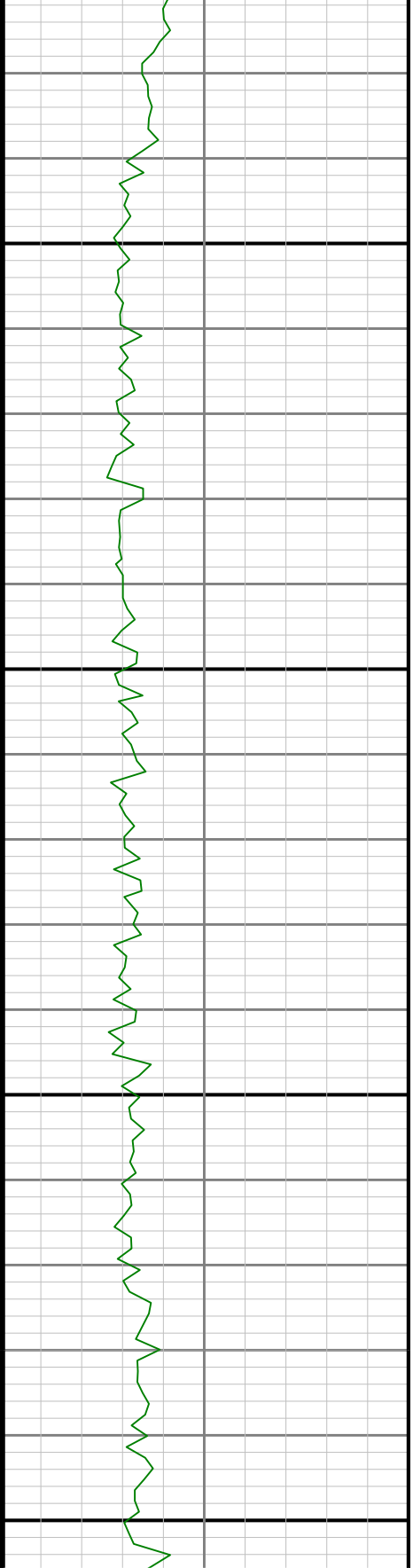
3500

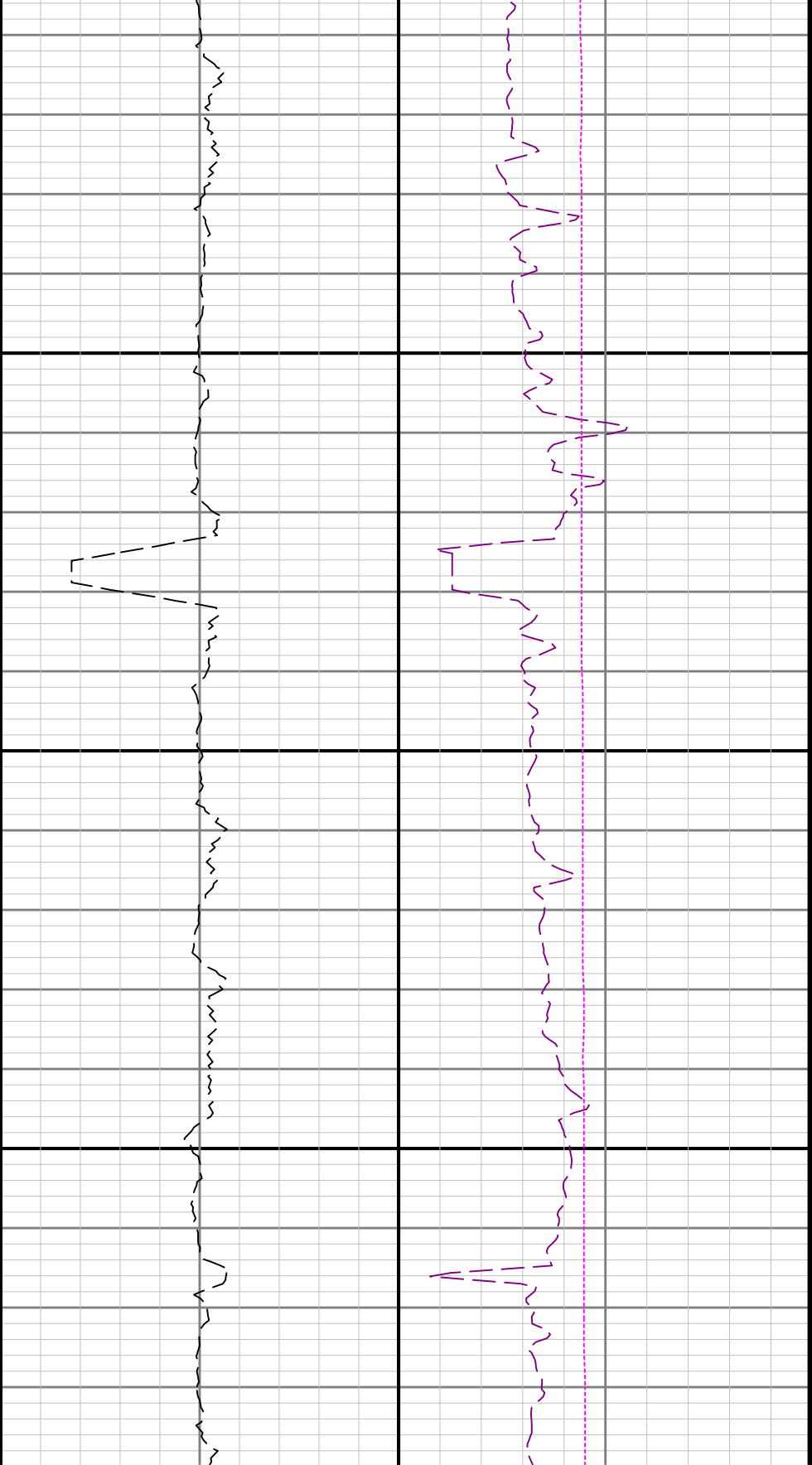




3600

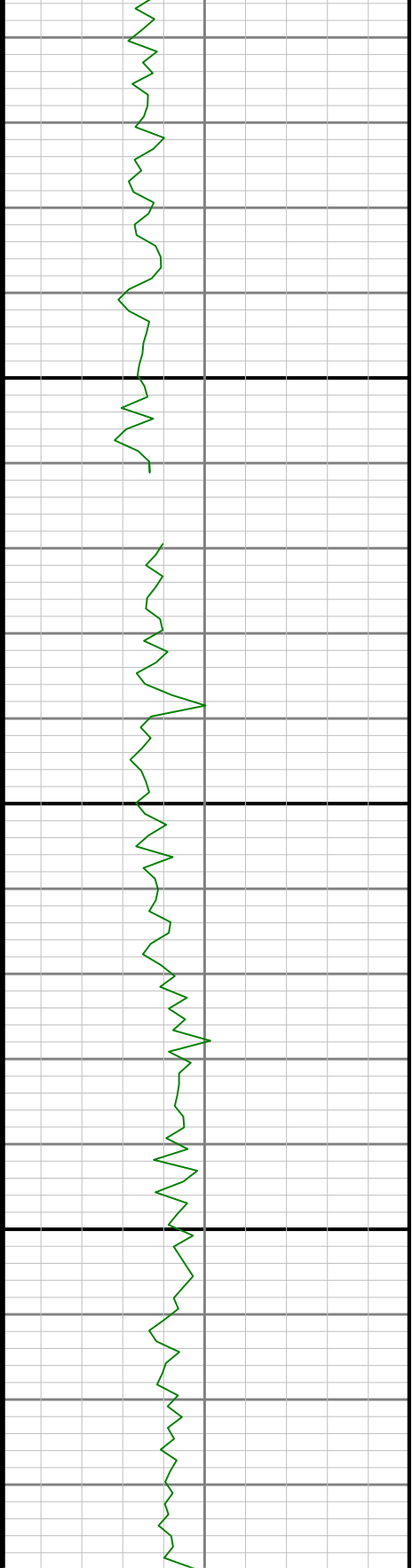
3700

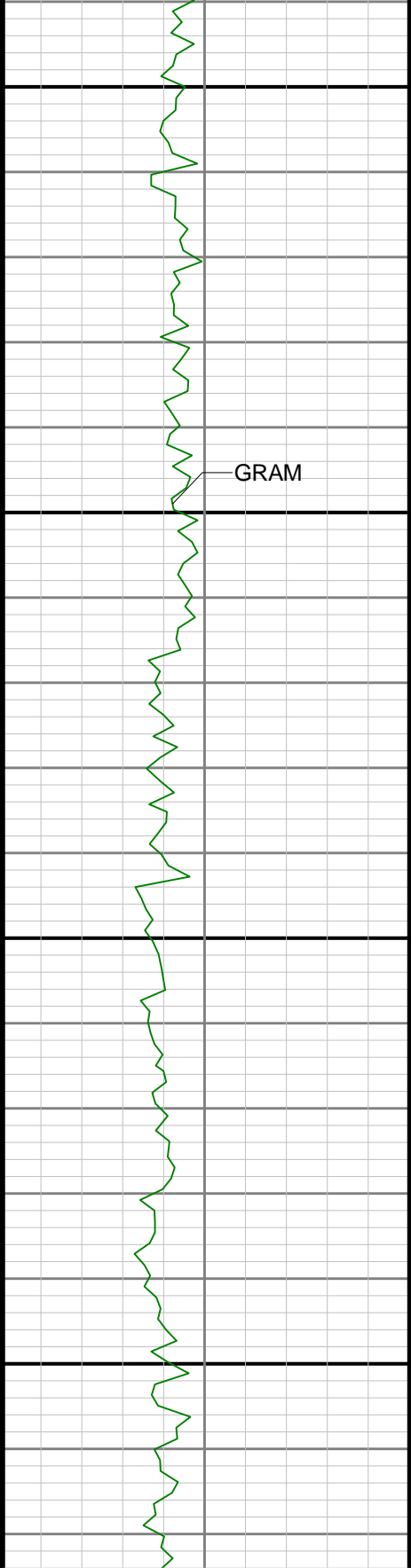




3800

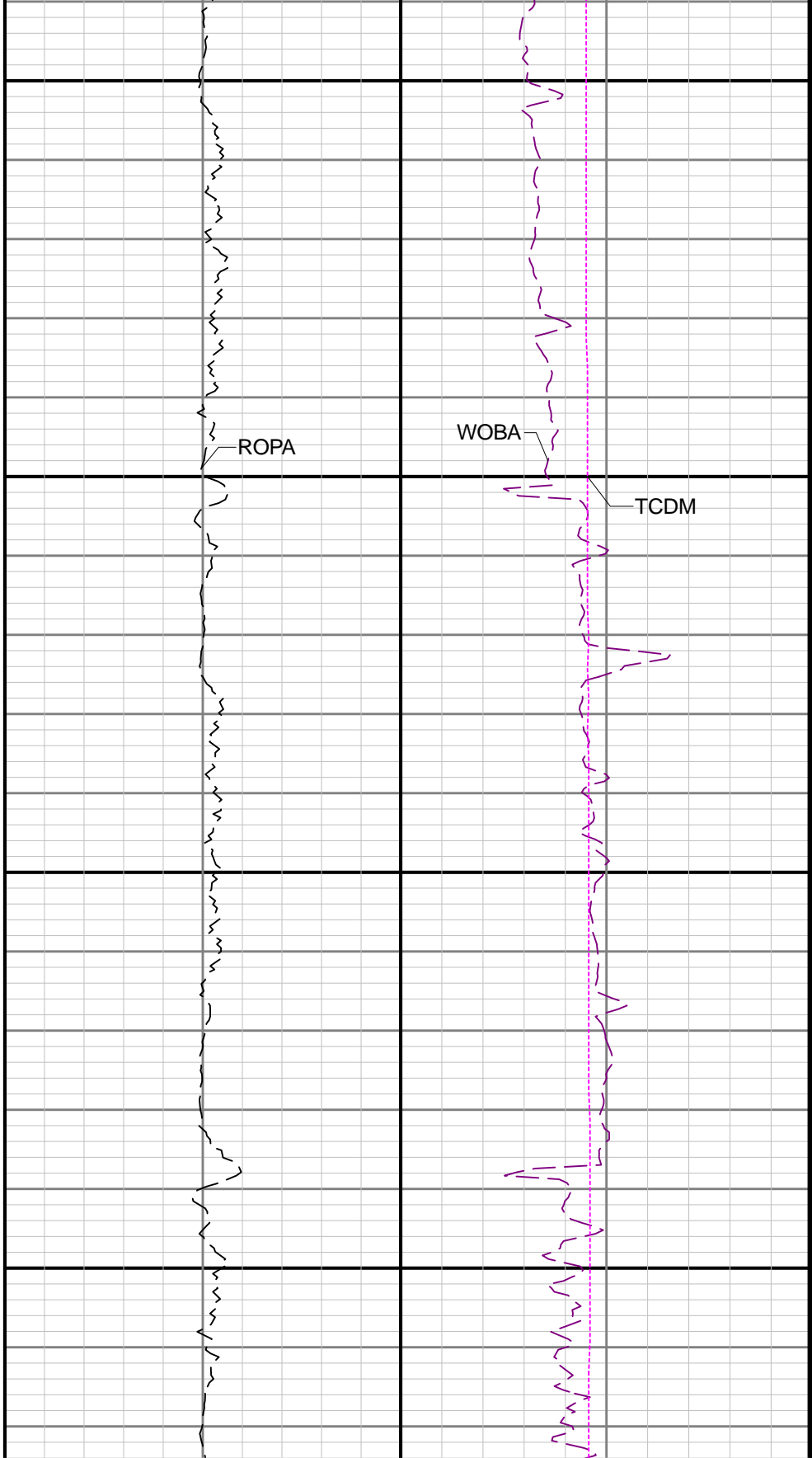
3900

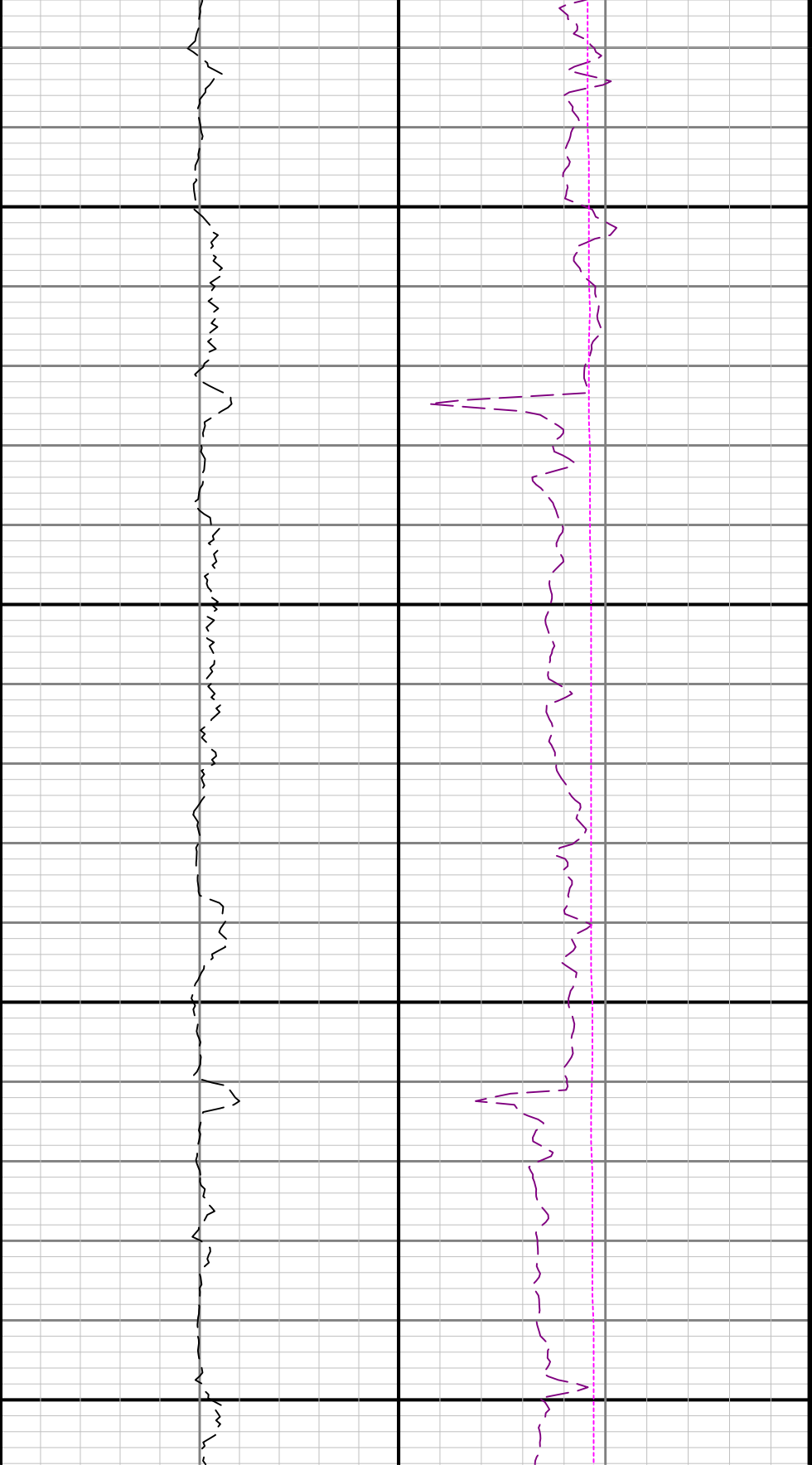




4000

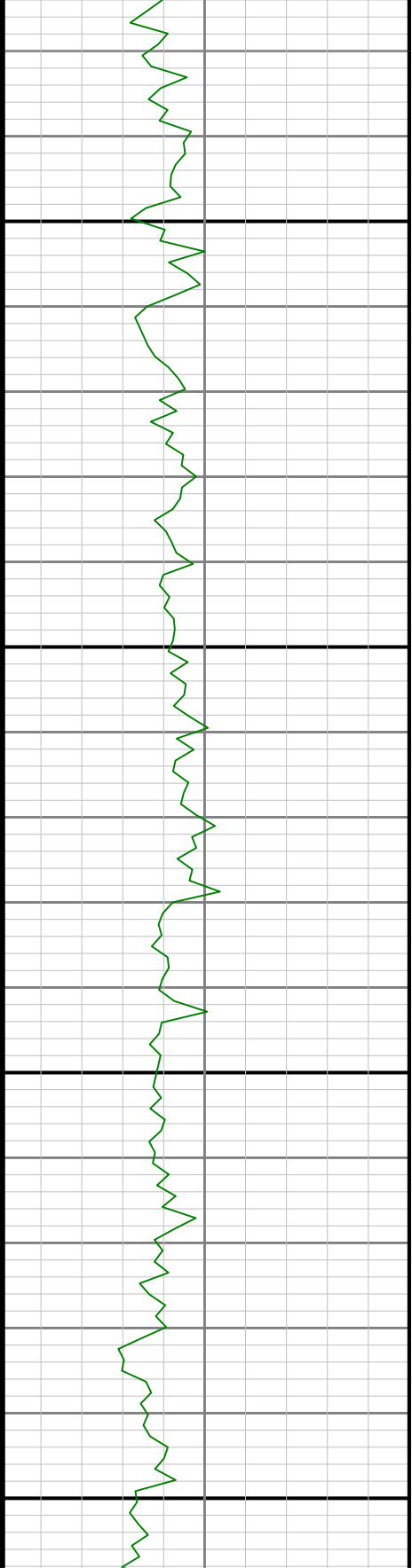
4100

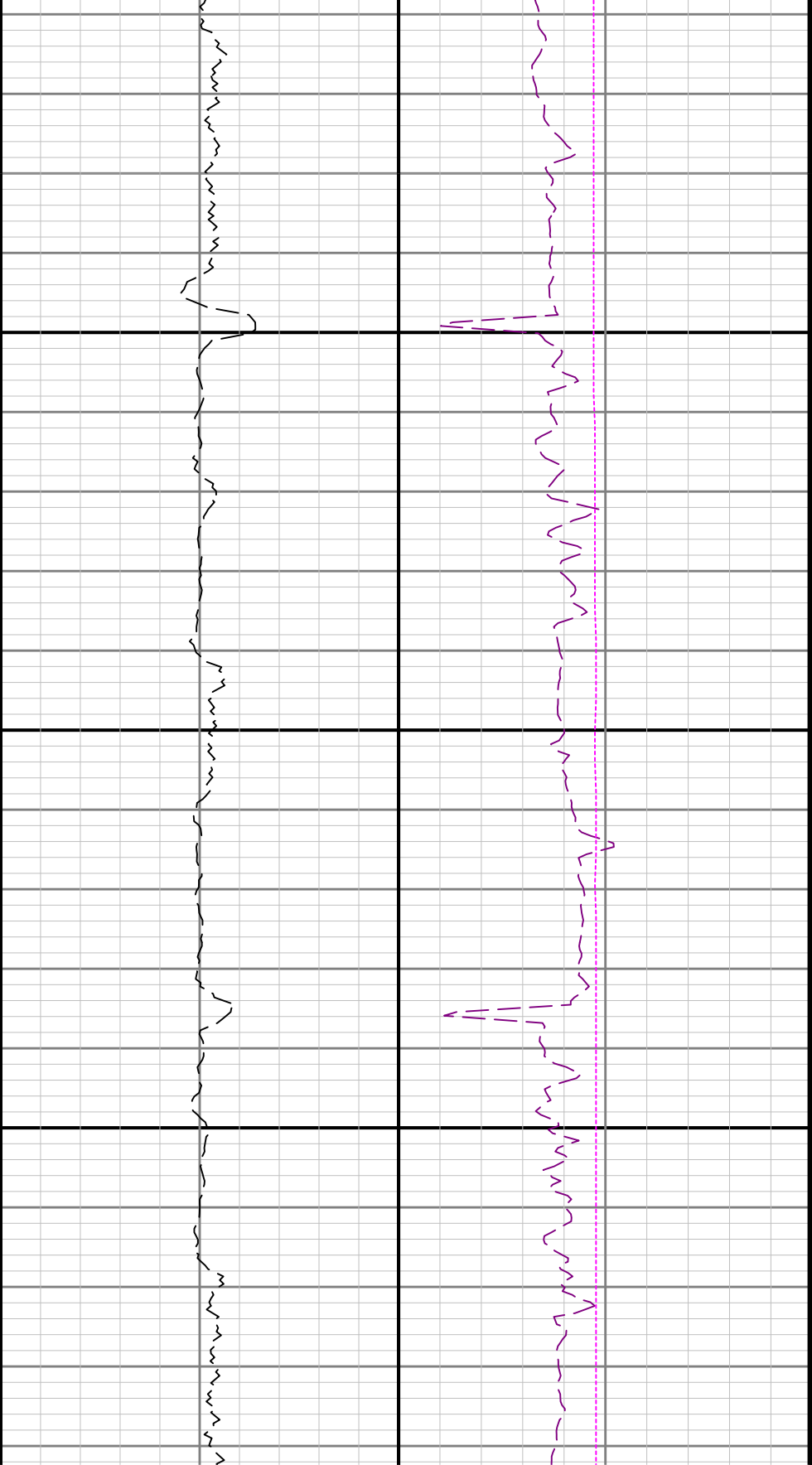




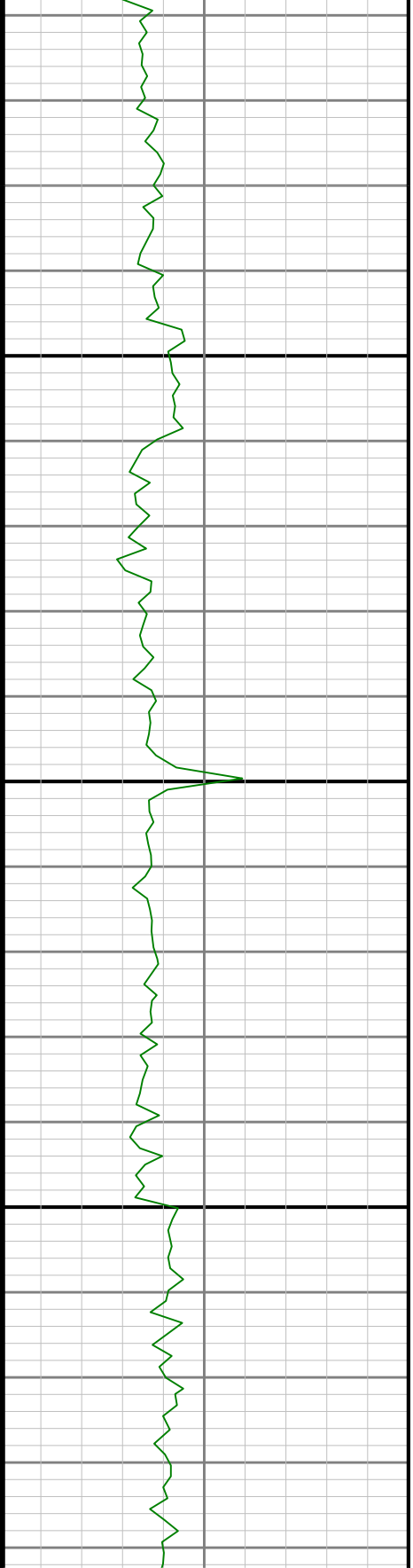
4200

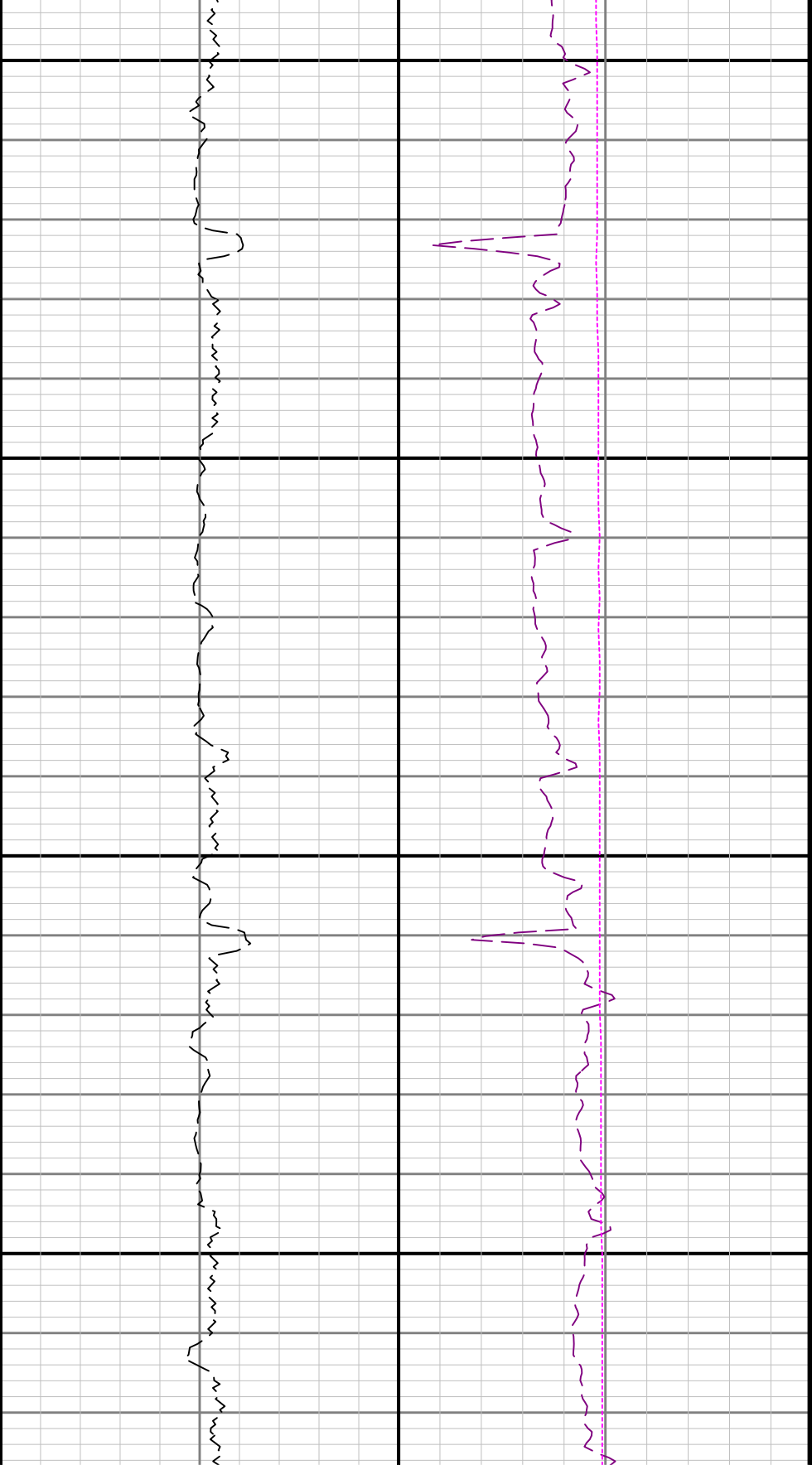
4300





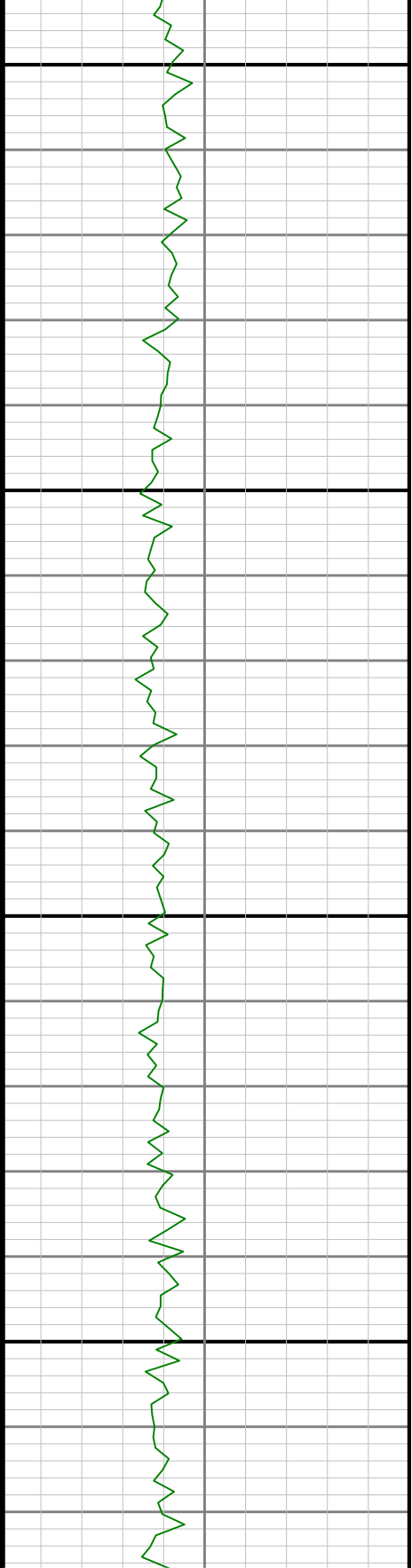
4400

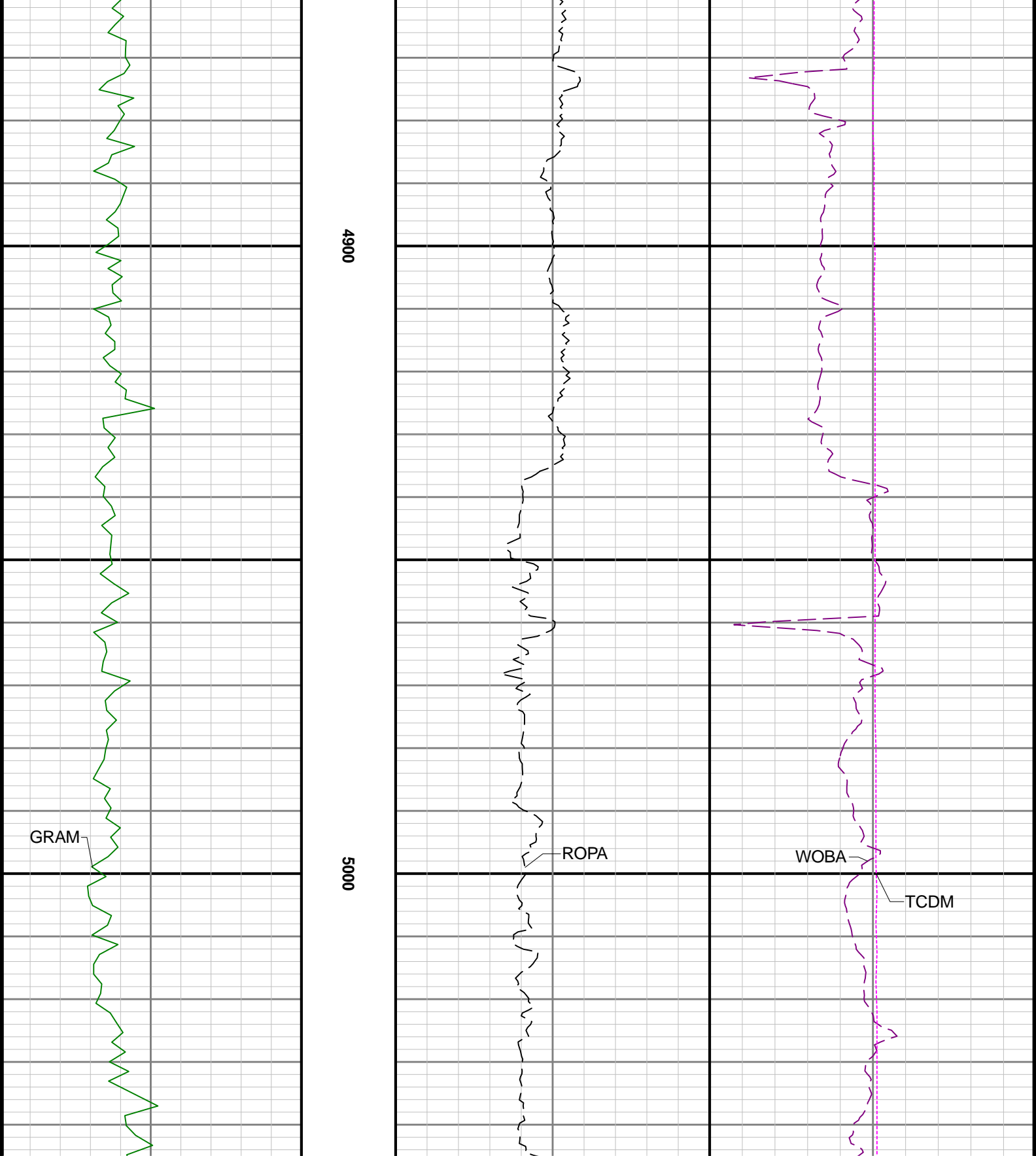


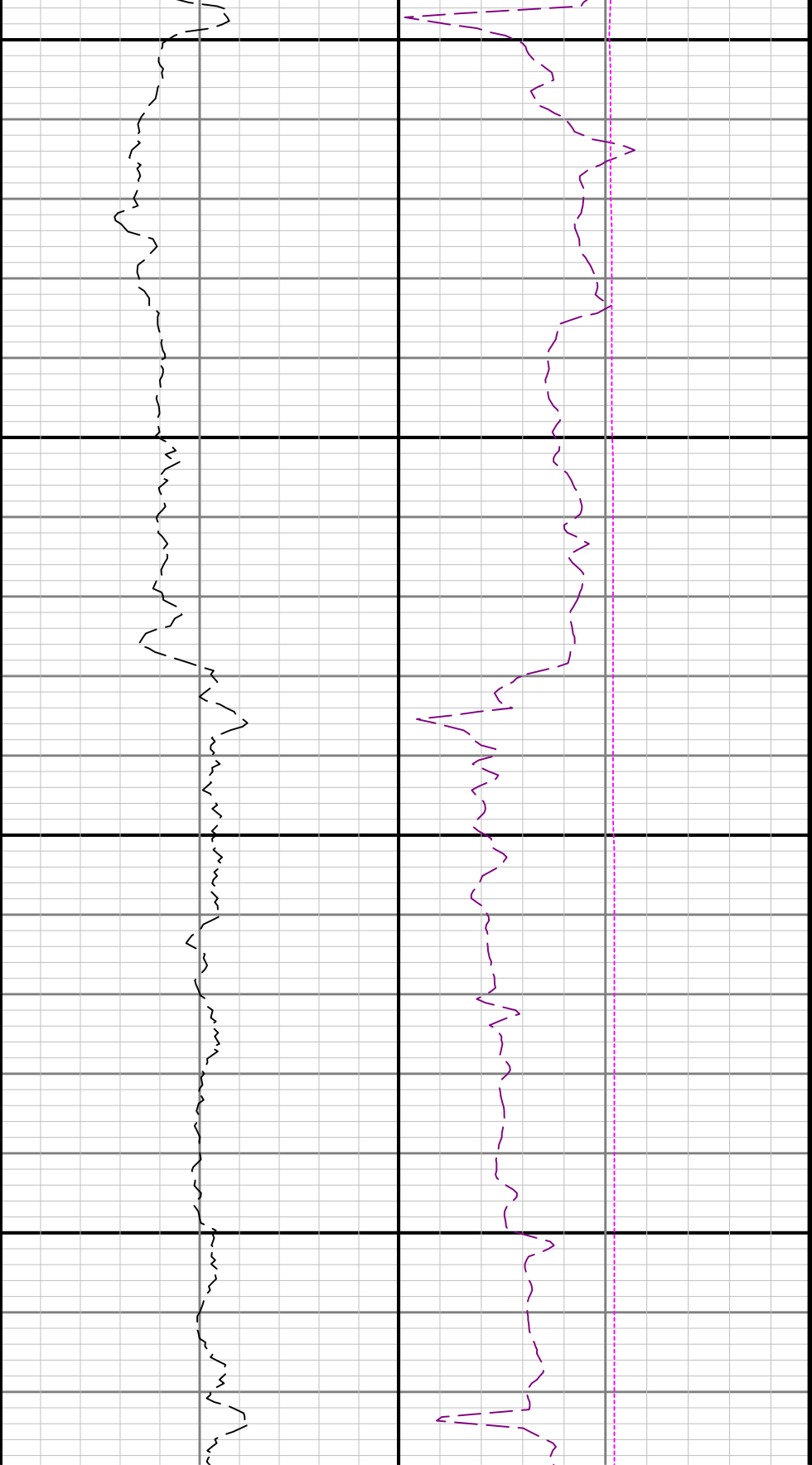


4500

4600

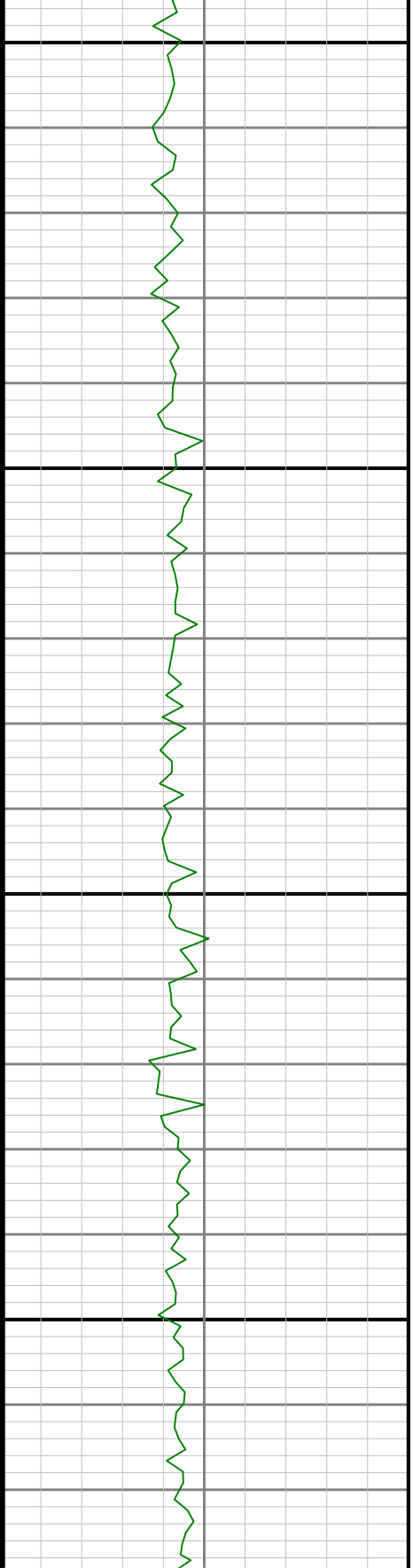


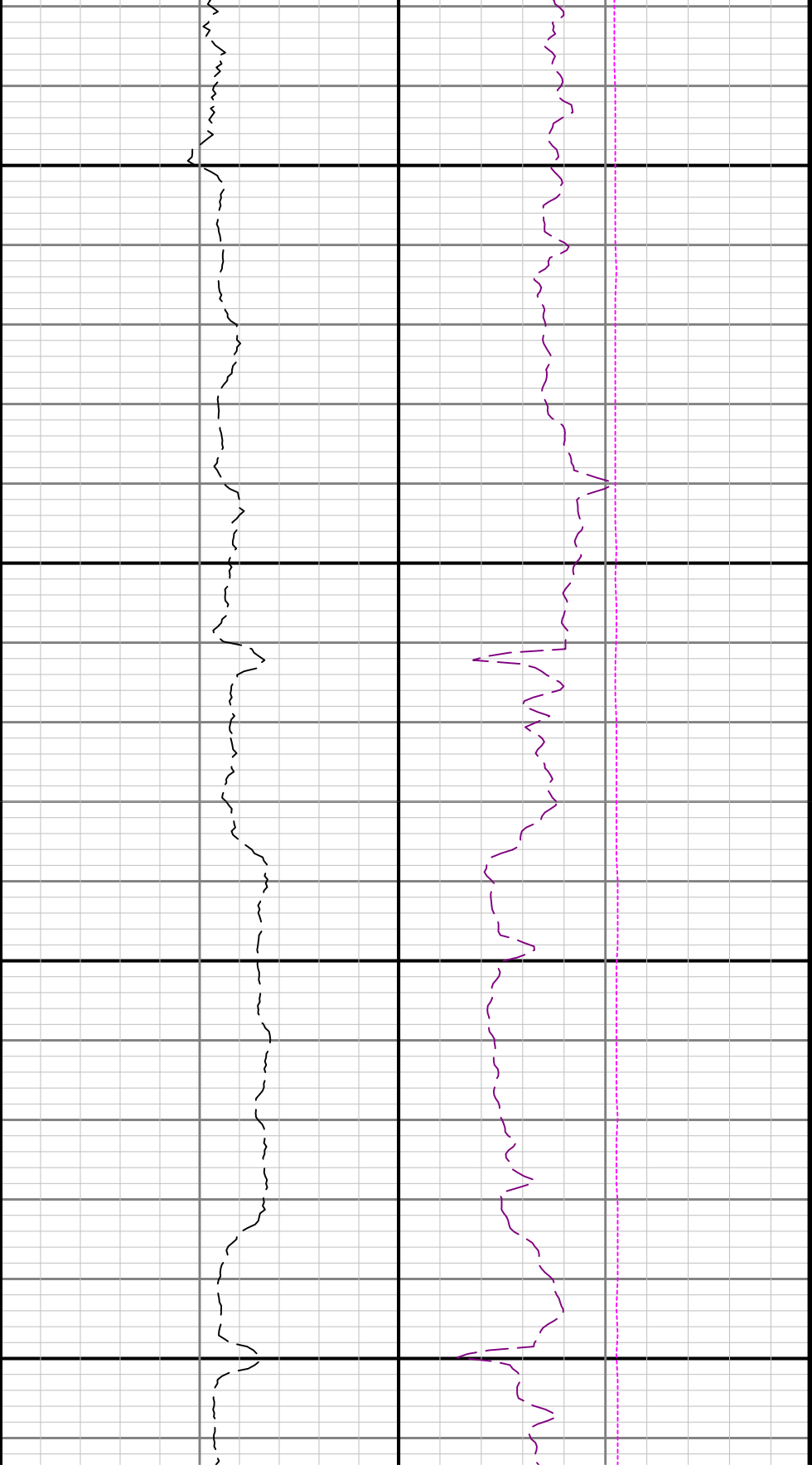




5100

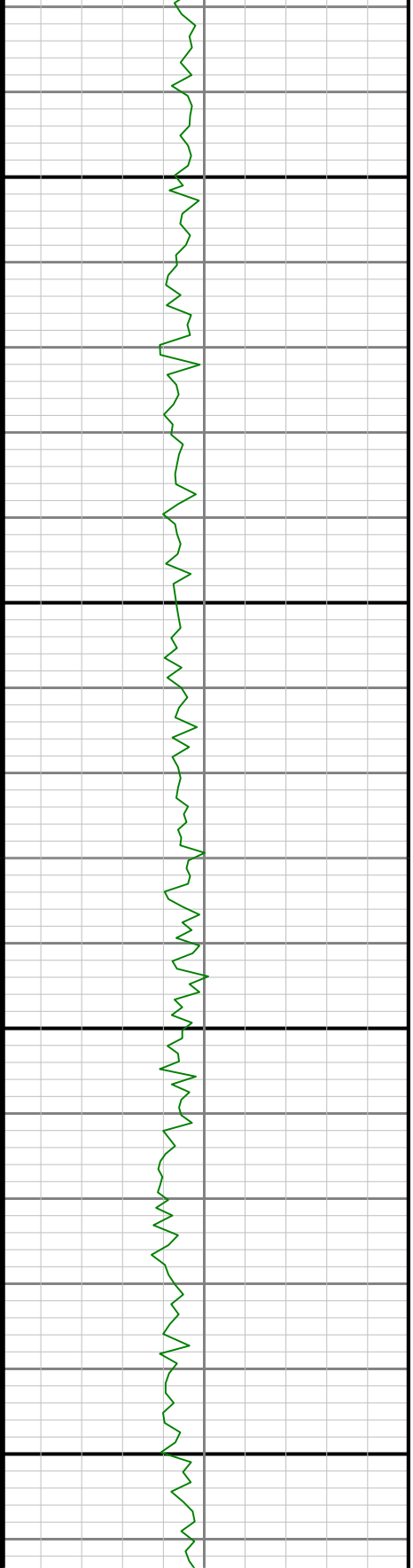
5200

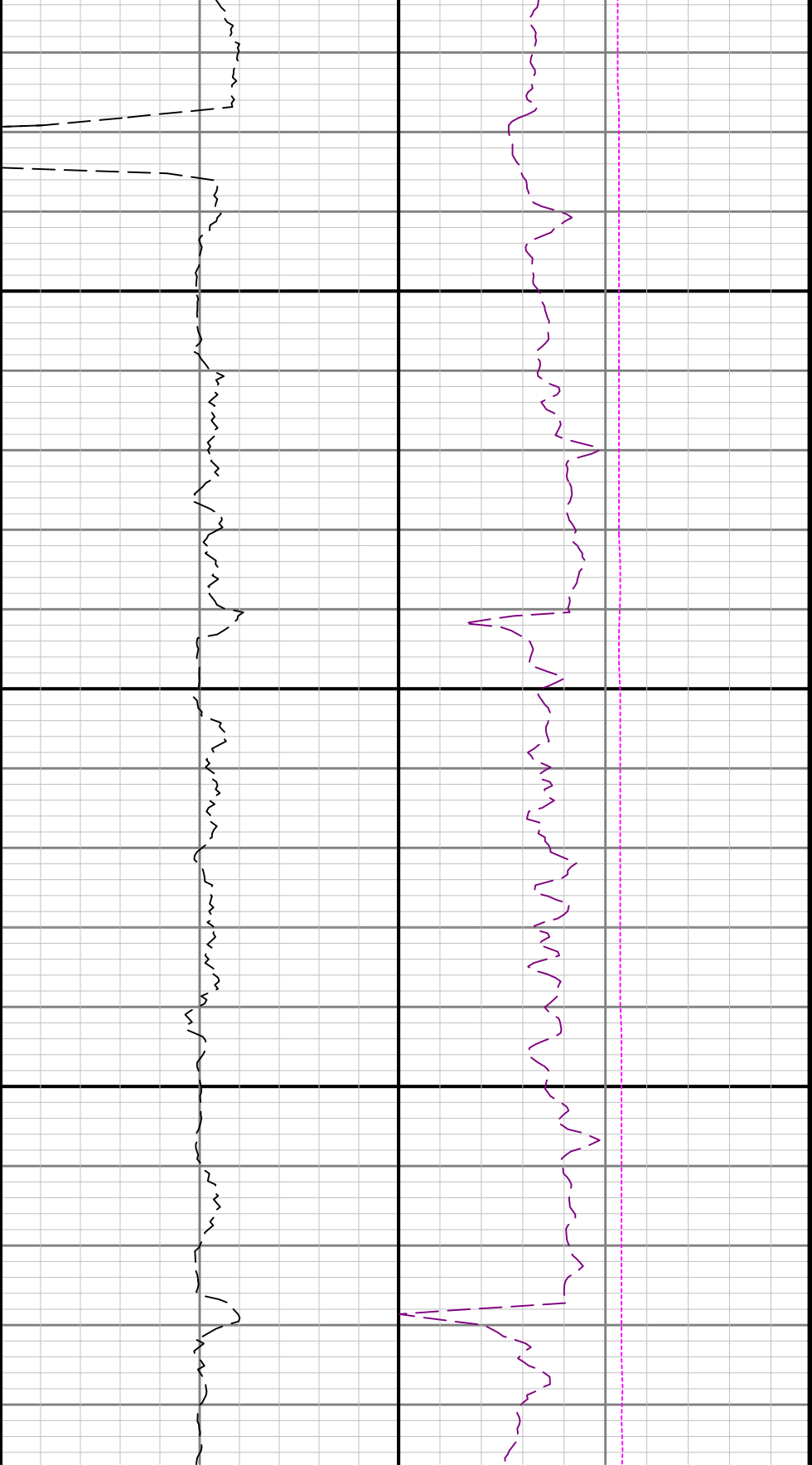




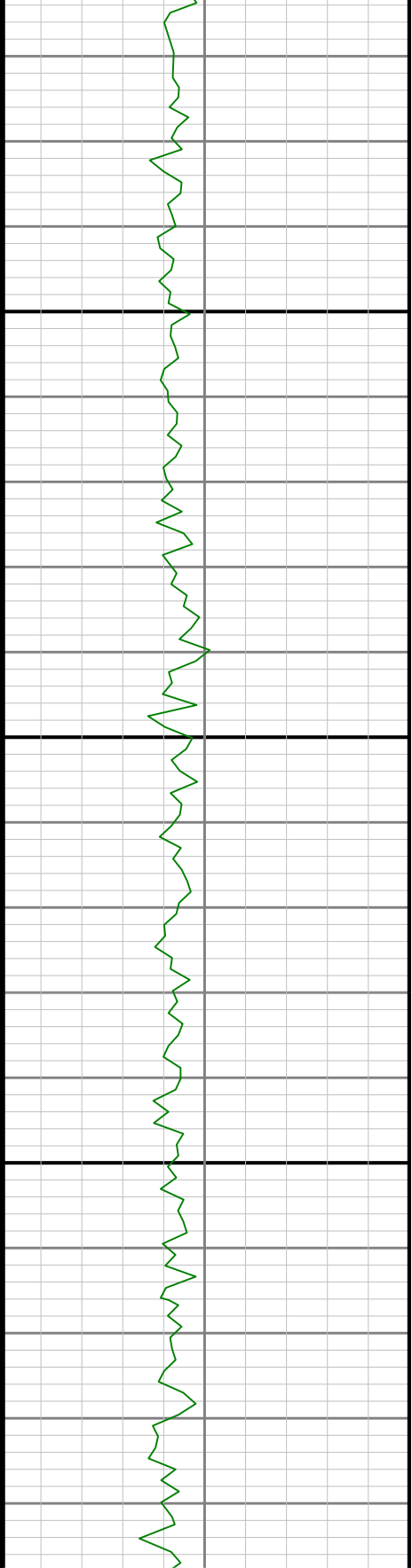
5300

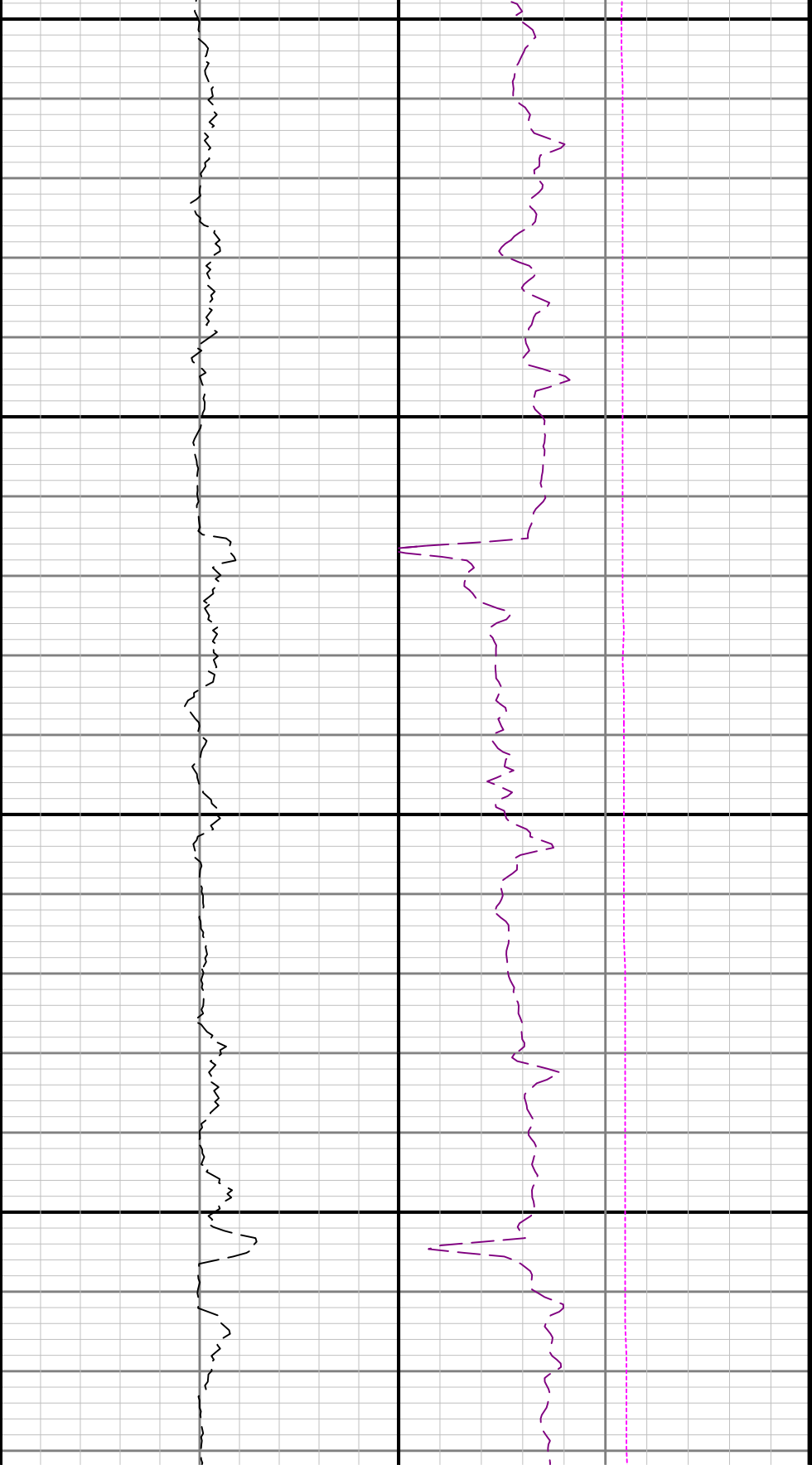
5400





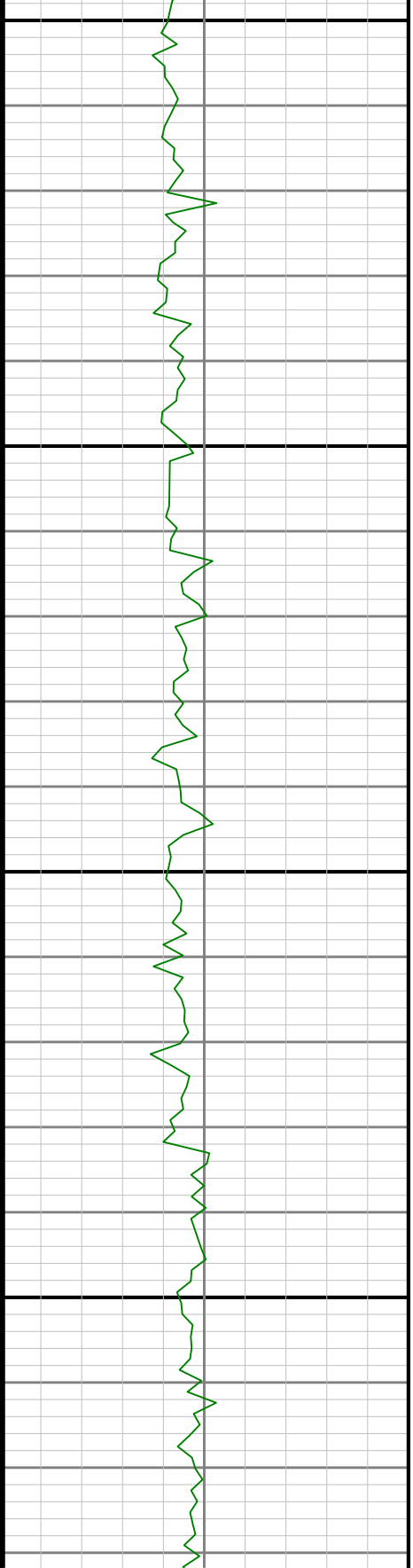
5500

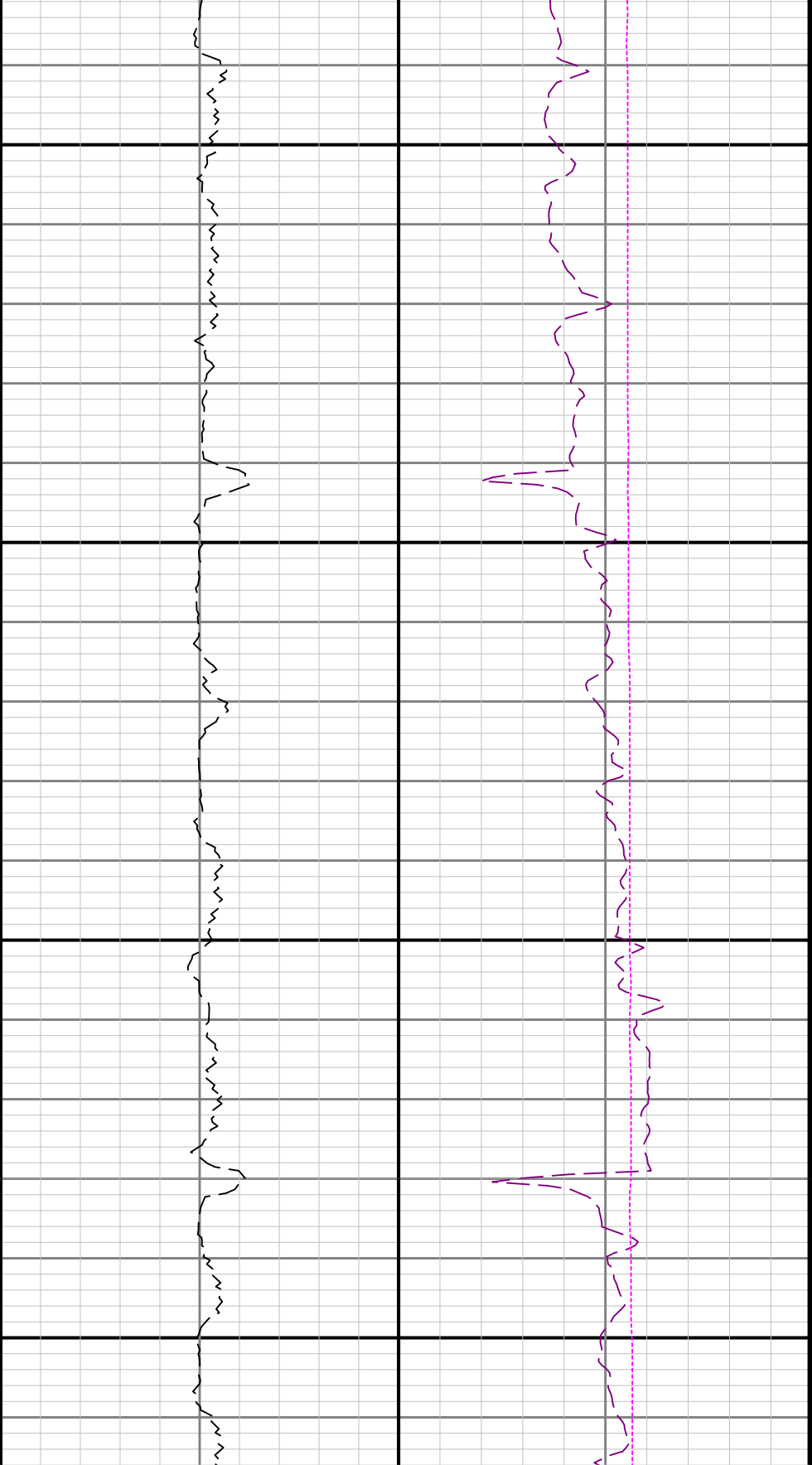




56600

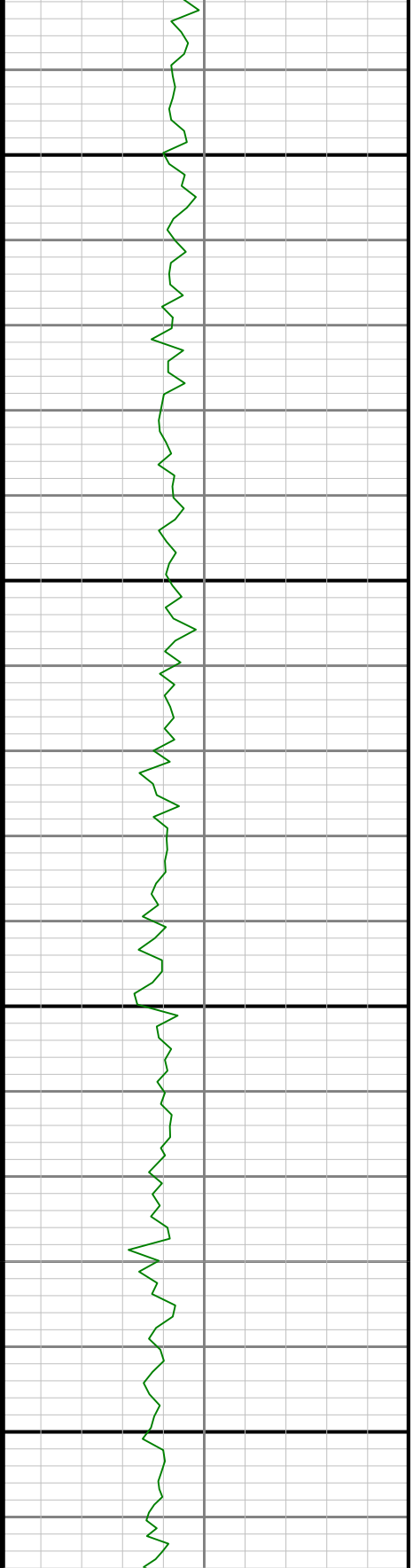
5700

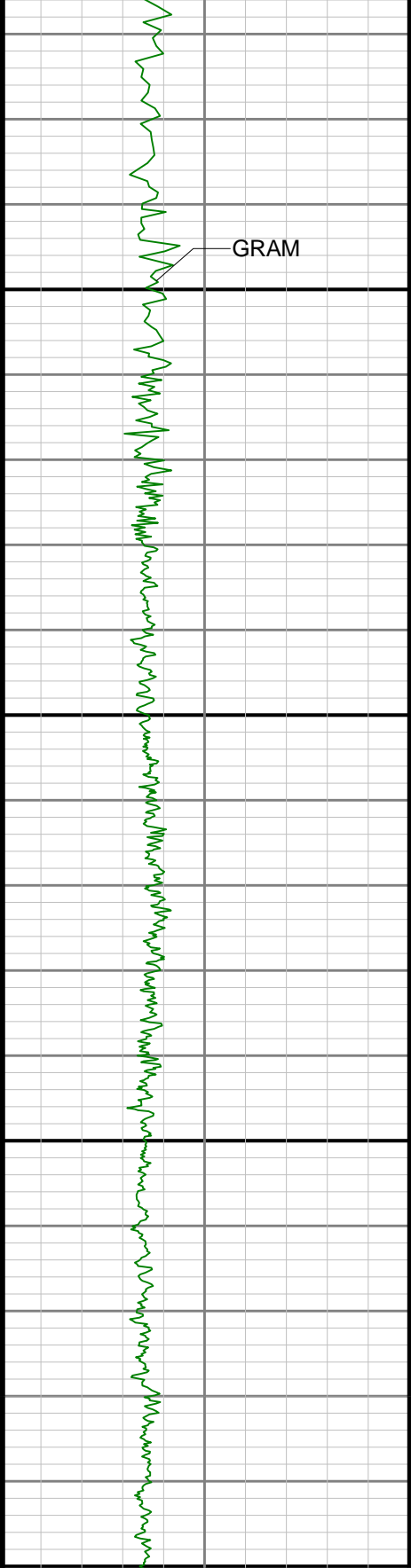




5800

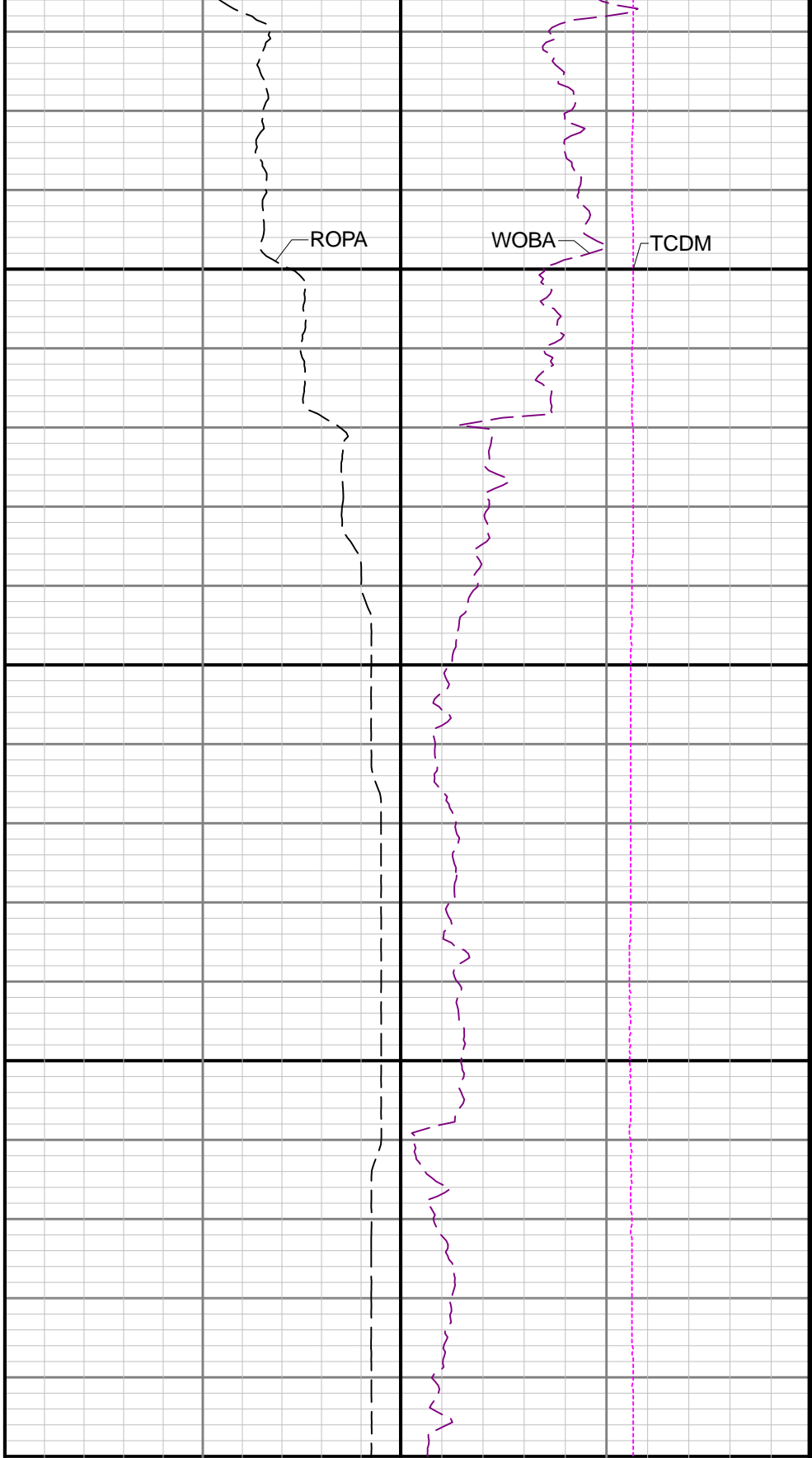
5900

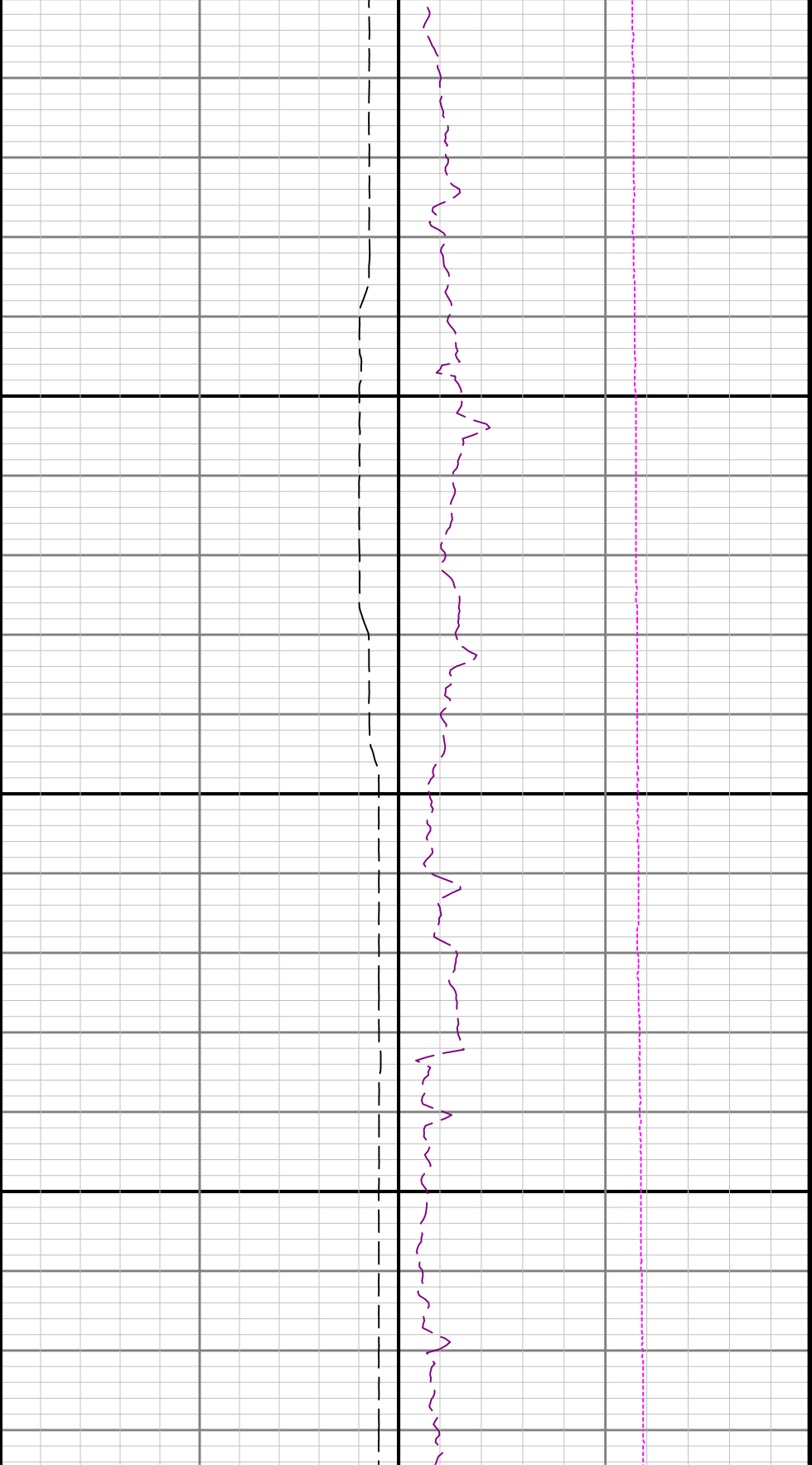




6000

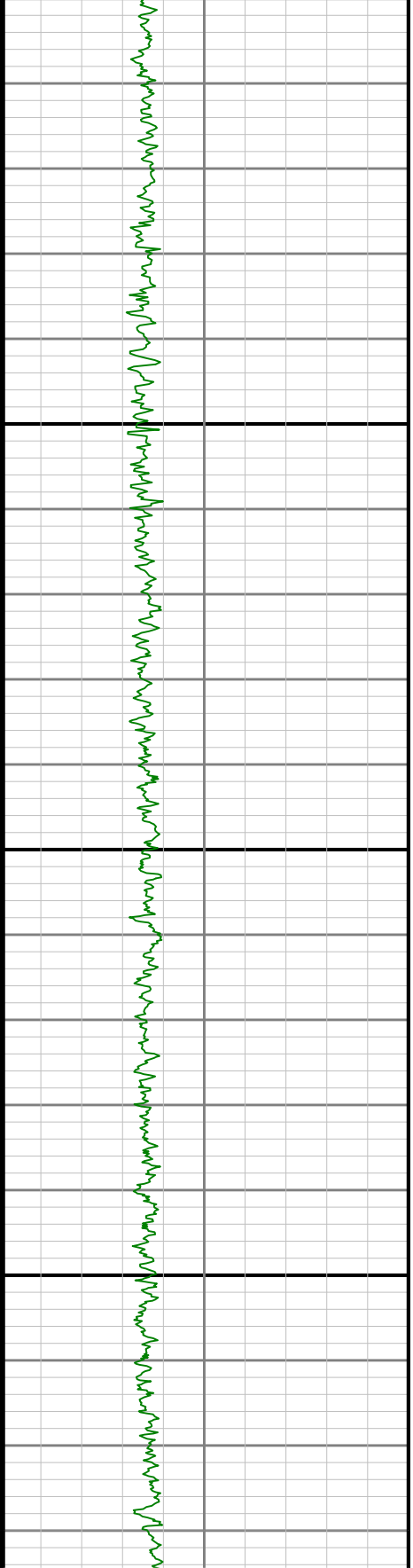
6100

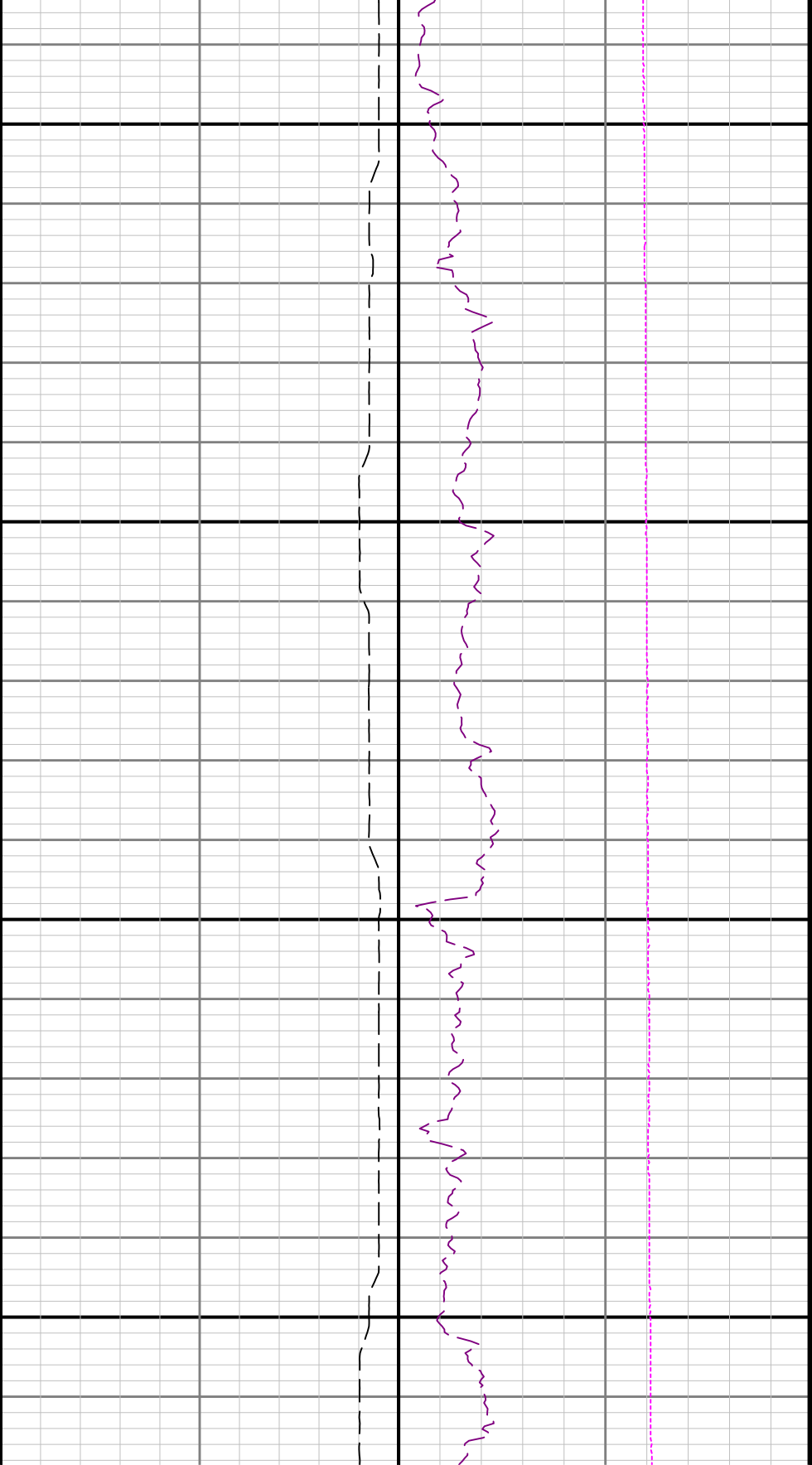




6200

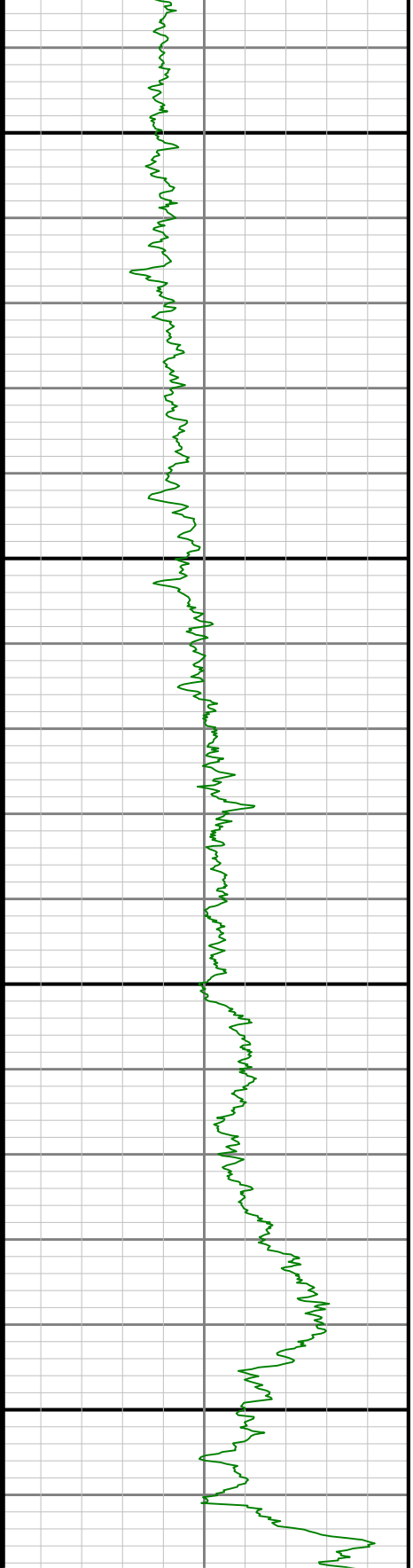
6300

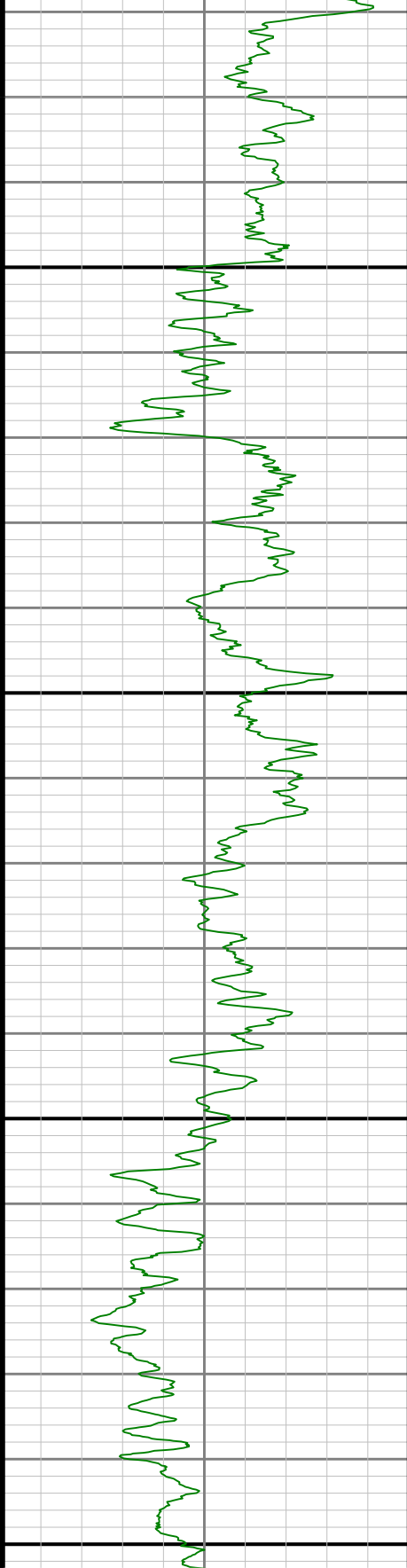




6400

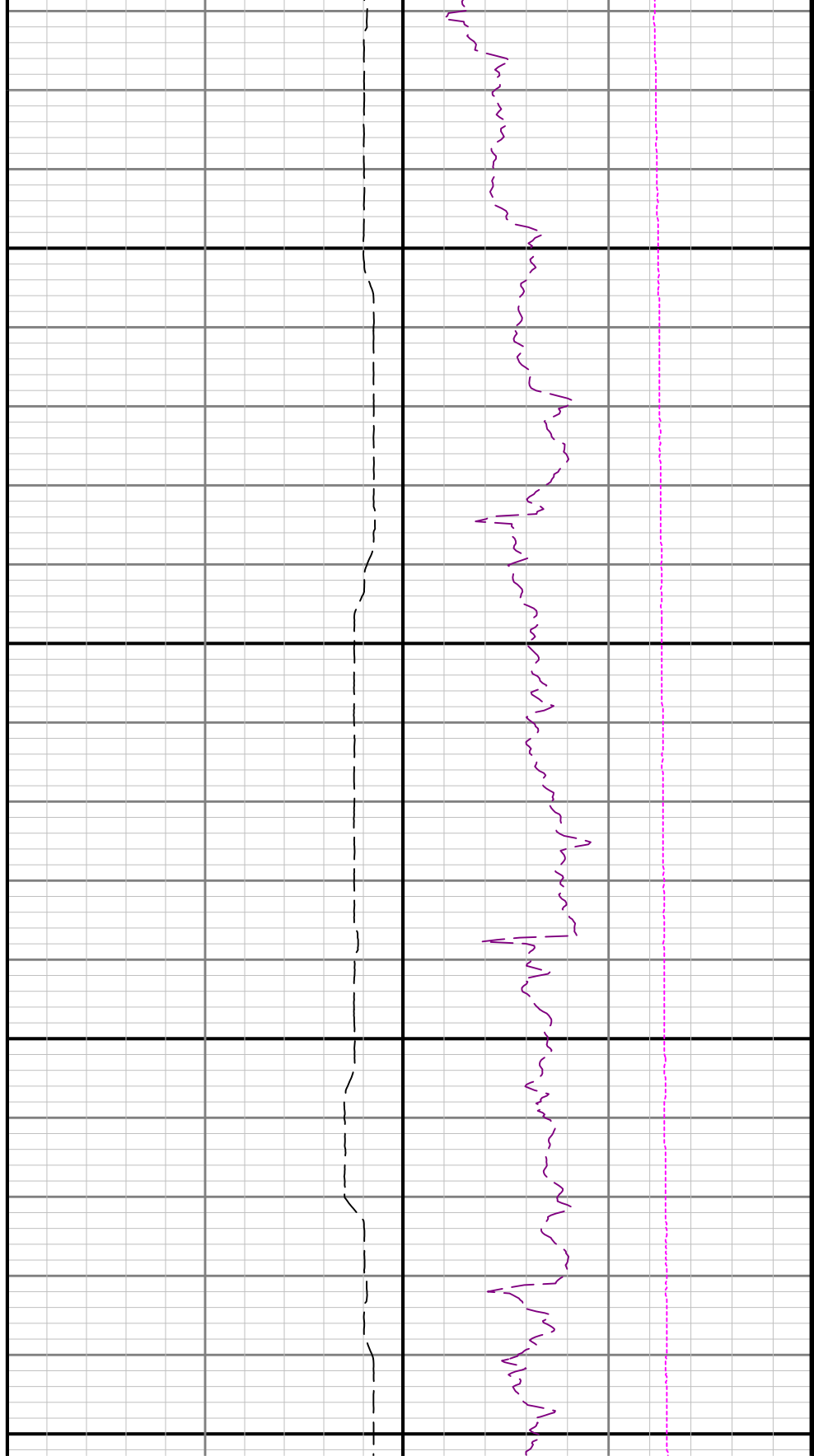
6500

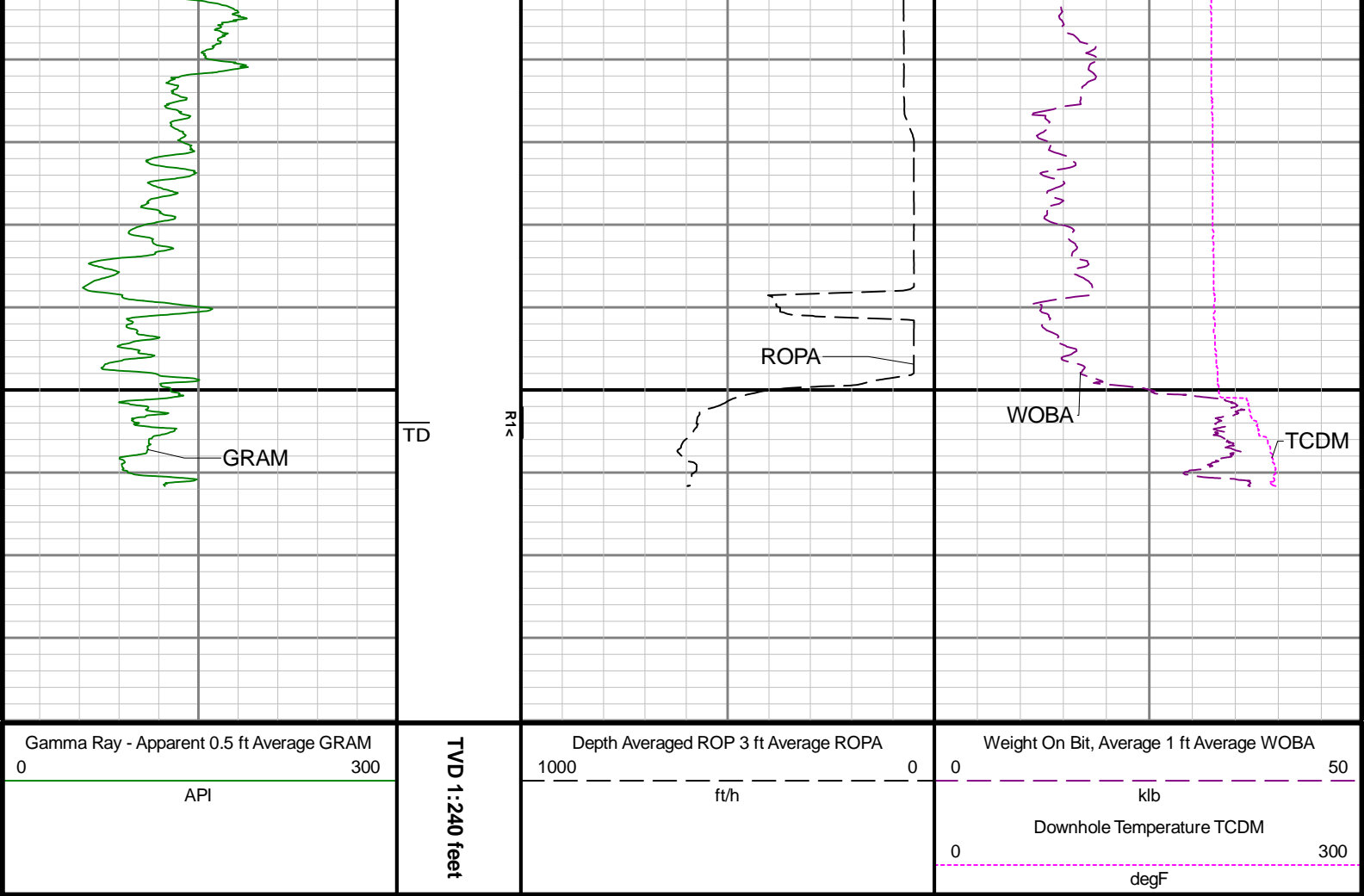




0099

6700





Directional Survey Summary					
Latitude:	40° 26' 13.452" N		Longitude:	104° 32' 25.224" W	
North Reference:	Grid		Drill Depth Zero:	Rig Floor	
Vertical Datum is:	Mean Sea Level		Vertical Datum to DDZ: (ft)	4661.00	
Vertical Section North: (ft)	0.00		Vertical Section East: (ft)	0.00	
Vertical Section Azimuth: (deg)	351.05		Magnetic Declination: (deg)	7.74	
Grid Convergence: (deg)	-0.62			Minimum Curvature	
Total Correction: (deg)	7.12				
Magnetic Correction:	Off				
Local Magnetic Dip Angle: (deg)	66.81		Local Magnetic Field: (nT)	51961	
			Local Gravity Field: (m/s2)	9.800	

Tie-In / Projection	Measured Depth (ft)	Inclination (deg)	Azimuth (deg)	Temperature (degF)	North (ft)	East (ft)	True Vertical Depth (ft)	TVD Subsea (ft)	Vertical Section (ft)	Course Length (ft)	Dog Leg Severity (deg/100ft)	Build Rate (deg/100ft)	Turn Rate (deg/100ft)
Tie-In	0.00	0.00	0.00	N/A	0.00	0.00	0.00	-4661.00	0.00	0.00	0.00	0.00	0.00
	82.00	0.38	309.29	N/A	0.17	-0.21	82.00	-4579.00	0.20	82.00	0.46	0.46	-61.84
	175.00	0.32	266.98	N/A	0.35	-0.71	175.00	-4486.00	0.46	93.00	0.28	-0.06	-45.49
	266.00	0.13	151.21	N/A	0.25	-0.91	266.00	-4395.00	0.39	91.00	0.43	-0.21	-127.22
	330.00	0.11	75.33	N/A	0.20	-0.82	330.00	-4331.00	0.33	64.00	0.23	-0.03	-118.56
	424.00	0.33	193.74	N/A	-0.04	-0.80	424.00	-4237.00	0.09	94.00	0.42	0.23	125.97
	519.00	0.22	217.66	N/A	-0.45	-0.97	519.00	-4142.00	-0.29	95.00	0.17	-0.12	25.18
	614.00	0.33	315.35	N/A	-0.40	-1.28	613.99	-4047.01	-0.19	95.00	0.44	0.12	102.83
	709.00	0.13	204.67	N/A	-0.30	-1.51	708.99	-3952.01	-0.06	95.00	0.42	-0.21	-116.51
	803.00	0.10	29.26	N/A	-0.33	-1.52	802.99	-3858.01	-0.09	94.00	0.24	-0.03	-186.61
	898.00	0.44	251.44	N/A	0.23	-1.53	897.99	-3790.04	0.24	95.00	0.24	0.24	-145.44

		898.00	0.11	251.41	N/A	-0.28	-1.56	897.99	-3763.01	-0.04	95.00	0.21	0.01	-145.11
		992.00	0.64	139.83	N/A	-0.71	-1.31	991.99	-3669.01	-0.50	94.00	0.73	0.56	-118.70
		1087.00	0.29	155.16	N/A	-1.34	-0.87	1086.99	-3574.01	-1.19	95.00	0.39	-0.37	16.14
		1182.00	0.17	121.85	N/A	-1.63	-0.65	1181.99	-3479.01	-1.51	95.00	0.18	-0.13	-35.06
		1276.00	0.30	180.07	N/A	-1.95	-0.53	1275.99	-3385.01	-1.84	94.00	0.27	0.14	61.94
		1371.00	0.51	227.05	N/A	-2.49	-0.84	1370.99	-3290.01	-2.33	95.00	0.40	0.22	49.45
		1466.00	0.60	265.17	N/A	-2.82	-1.64	1465.98	-3195.02	-2.53	95.00	0.39	0.09	40.13
		1561.00	0.54	271.87	N/A	-2.84	-2.59	1560.98	-3100.02	-2.41	95.00	0.09	-0.06	7.05
		1655.00	0.61	338.31	N/A	-2.36	-3.21	1654.97	-3006.03	-1.84	94.00	0.67	0.07	70.68
		1750.00	0.54	27.70	N/A	-1.50	-3.19	1749.97	-2911.03	-0.98	95.00	0.51	-0.07	51.99
		1845.00	0.34	154.89	N/A	-1.36	-2.86	1844.97	-2816.03	-0.89	95.00	0.83	-0.21	133.88
		1876.00	0.54	191.02	N/A	-1.58	-2.85	1875.97	-2785.03	-1.12	31.00	1.07	0.65	116.55
		1921.00	0.67	222.76	N/A	-1.98	-3.07	1920.96	-2740.04	-1.48	45.00	0.79	0.29	70.53
		1997.00	1.18	245.37	101.4	-2.64	-4.09	1996.95	-2664.05	-1.97	76.00	0.81	0.67	29.75
		2091.00	3.25	237.11	104.1	-4.49	-7.20	2090.88	-2570.12	-3.31	94.00	2.22	2.20	-8.79
		2186.00	5.98	236.58	106.8	-8.68	-13.60	2185.56	-2475.44	-6.46	95.00	2.87	2.87	-0.56
		2281.00	7.82	237.21	106.8	-14.90	-23.16	2279.87	-2381.13	-11.12	95.00	1.94	1.94	0.66
		2375.00	8.73	236.43	109.5	-22.31	-34.48	2372.89	-2288.11	-16.67	94.00	0.98	0.97	-0.83
		2470.00	9.13	236.05	112.2	-30.51	-46.74	2466.74	-2194.26	-22.86	95.00	0.43	0.42	-0.40
		2565.00	10.16	236.66	112.2	-39.32	-59.99	2560.39	-2100.61	-29.51	95.00	1.09	1.08	0.64
		2659.00	11.65	236.23	114.9	-49.15	-74.81	2652.69	-2008.31	-36.92	94.00	1.59	1.59	-0.46
		2754.00	11.65	236.08	117.6	-59.84	-90.74	2745.74	-1915.26	-44.99	95.00	0.03	0.00	-0.16
		2849.00	14.34	236.40	120.3	-71.70	-108.50	2838.30	-1822.70	-53.95	95.00	2.83	2.83	0.34
		2944.00	16.26	235.89	120.3	-85.67	-129.32	2929.92	-1731.08	-64.51	95.00	2.03	2.02	-0.54
		3038.00	19.14	235.37	123.0	-101.81	-152.90	3019.47	-1641.53	-76.79	94.00	3.07	3.06	-0.55
		3133.00	20.19	235.05	123.0	-120.06	-179.15	3108.92	-1552.08	-90.72	95.00	1.11	1.11	-0.34
		3228.00	20.96	235.89	125.7	-138.98	-206.66	3197.86	-1463.14	-105.13	95.00	0.87	0.81	0.88
		3323.00	21.70	236.48	128.4	-158.20	-235.37	3286.36	-1374.64	-119.66	95.00	0.81	0.78	0.62
		3417.00	22.73	235.20	128.4	-178.17	-264.77	3373.38	-1287.62	-134.81	94.00	1.21	1.10	-1.36
		3511.00	21.90	235.66	128.4	-198.42	-294.16	3460.34	-1200.66	-150.24	94.00	0.90	-0.88	0.49
		3606.00	22.24	236.57	131.1	-218.32	-323.79	3548.38	-1112.62	-165.29	95.00	0.51	0.36	0.96
		3700.00	23.07	237.75	131.1	-237.95	-354.21	3635.12	-1025.88	-179.94	94.00	1.01	0.88	1.26
		3795.00	24.23	238.22	131.1	-258.15	-386.53	3722.14	-938.86	-194.87	95.00	1.24	1.22	0.49
		3889.00	24.25	238.36	133.8	-278.43	-419.36	3807.85	-853.15	-209.80	94.00	0.06	0.02	0.15
		3984.00	23.87	238.82	133.8	-298.62	-452.41	3894.60	-766.40	-224.60	95.00	0.45	-0.40	0.48
		4078.00	23.99	238.22	136.5	-318.53	-484.93	3980.52	-680.48	-239.21	94.00	0.29	0.13	-0.64
		4172.00	24.04	238.30	136.5	-338.65	-517.46	4066.38	-594.62	-254.03	94.00	0.06	0.05	0.09
		4267.00	22.77	238.05	139.2	-358.55	-549.53	4153.57	-507.43	-268.69	95.00	1.34	-1.34	-0.26
		4361.00	22.64	237.94	139.2	-377.78	-580.29	4240.28	-420.72	-282.90	94.00	0.15	-0.14	-0.12
		4551.00	22.70	238.28	144.6	-416.47	-642.47	4415.60	-245.40	-311.44	190.00	0.08	0.03	0.18
		4645.00	22.38	239.42	144.6	-435.11	-673.31	4502.42	-158.58	-325.06	94.00	0.58	-0.34	1.21
		4740.00	22.47	239.27	144.6	-453.58	-704.48	4590.24	-70.76	-338.46	95.00	0.11	0.09	-0.16
		4835.00	22.66	238.98	147.3	-472.29	-735.77	4677.97	16.97	-352.07	95.00	0.23	0.20	-0.31
		4929.00	21.70	239.91	150.0	-490.34	-766.32	4765.01	104.01	-365.15	94.00	1.09	-1.02	0.99
		5024.00	20.67	239.72	150.0	-507.60	-796.00	4853.59	192.59	-377.58	95.00	1.09	-1.08	-0.20
		5118.00	22.63	238.61	152.7	-525.38	-825.77	4940.95	279.95	-390.52	94.00	2.13	2.09	-1.18
		5212.00	22.55	238.86	152.7	-544.12	-856.63	5027.74	366.74	-404.23	94.00	0.13	-0.09	0.27
		5307.00	20.24	239.86	155.4	-561.80	-886.44	5116.19	455.19	-417.05	95.00	2.46	-2.43	1.05
		5401.00	20.23	239.28	155.4	-578.26	-914.47	5204.39	543.39	-428.96	94.00	0.21	-0.01	-0.62
		5496.00	20.43	239.05	158.1	-595.18	-942.81	5293.47	632.47	-441.26	95.00	0.23	0.21	-0.24
		5591.00	21.41	239.02	158.1	-612.63	-971.90	5382.21	721.21	-453.97	95.00	1.03	1.03	-0.03
		5685.00	22.09	239.31	160.8	-630.49	-1001.81	5469.51	808.51	-466.96	94.00	0.73	0.72	0.31
		5779.00	21.58	239.63	160.8	-648.25	-1031.92	5556.77	895.77	-479.82	94.00	0.56	-0.54	0.34
		5874.00	22.21	237.52	163.5	-666.72	-1062.14	5644.92	983.92	-493.36	95.00	1.06	0.66	-2.22
		5968.00	22.17	237.41	163.5	-685.82	-1092.07	5731.96	1070.96	-507.57	94.00	0.06	-0.04	-0.12
		6063.00	21.95	237.59	166.2	-704.99	-1122.16	5820.00	1159.00	-521.83	95.00	0.24	-0.23	0.19
		6158.00	20.97	237.53	168.9	-723.63	-1151.50	5908.41	1247.41	-535.68	95.00	1.03	-1.03	-0.06
		6253.00	18.29	238.69	168.9	-740.51	-1178.58	5997.88	1336.88	-548.13	95.00	2.85	-2.82	1.22
		6348.00	19.16	255.99	166.2	-752.04	-1206.46	6087.93	1426.93	-555.19	95.00	5.90	0.92	18.21
		6442.00	22.63	275.24	171.6	-754.12	-1239.49	6175.83	1514.83	-552.11	94.00	8.14	3.69	20.48
		6537.00	23.33	291.71	174.3	-745.48	-1275.20	6263.39	1602.39	-538.02	95.00	6.79	0.74	17.34
		6631.00	27.25	310.19	179.7	-724.67	-1309.00	6348.49	1687.49	-512.20	94.00	9.33	4.17	19.66

	6726.00	33.33	319.97	179.7	-690.60	-1342.45	6430.54	1769.54	-473.34	95.00	8.22	6.40	10.29
	6821.00	42.21	329.89	182.5	-642.87	-1375.35	6505.62	1844.62	-421.07	95.00	11.30	9.35	10.44
	6915.00	49.78	338.10	187.9	-582.11	-1404.64	6570.94	1909.94	-356.50	94.00	10.20	8.05	8.73
	7010.00	57.84	343.67	190.6	-509.71	-1429.53	6627.02	1966.02	-281.11	95.00	9.71	8.48	5.86
	7104.00	63.87	346.87	190.6	-430.35	-1450.33	6672.78	2011.78	-199.48	94.00	7.07	6.41	3.40
	7199.00	70.35	351.36	193.3	-344.46	-1466.76	6709.73	2048.73	-112.08	95.00	8.09	6.82	4.73
	7293.00	78.06	358.28	196.0	-254.50	-1474.81	6735.33	2074.33	-21.96	94.00	10.83	8.20	7.36
	7388.00	86.33	2.03	198.7	-160.48	-1474.52	6748.22	2087.22	70.87	95.00	9.54	8.71	3.95
	7483.00	90.37	2.47	201.4	-65.61	-1470.80	6750.96	2089.96	164.00	95.00	4.28	4.25	0.46
	7577.00	89.75	3.04	206.8	28.28	-1466.28	6750.86	2089.86	256.04	94.00	0.90	-0.66	0.61
	7672.00	90.43	2.61	209.5	123.16	-1461.60	6750.71	2089.71	349.04	95.00	0.85	0.72	-0.45
	7767.00	90.40	2.67	209.5	218.06	-1457.22	6750.02	2089.02	442.10	95.00	0.07	-0.03	0.06
	7861.00	90.62	0.43	212.2	312.01	-1454.68	6749.18	2088.18	534.52	94.00	2.39	0.23	-2.38
	7956.00	89.82	359.76	214.9	407.01	-1454.52	6748.82	2087.82	628.34	95.00	1.10	-0.84	-0.71
	8051.00	89.60	359.82	214.9	502.01	-1454.87	6749.30	2088.30	722.23	95.00	0.24	-0.23	0.06
	8145.00	89.32	359.15	214.9	596.00	-1455.71	6750.19	2089.19	815.21	94.00	0.77	-0.30	-0.71
	8240.00	89.72	359.71	217.6	690.99	-1456.66	6750.98	2089.98	909.19	95.00	0.72	0.42	0.59
	8335.00	89.63	359.87	217.6	785.99	-1457.01	6751.52	2090.52	1003.09	95.00	0.19	-0.09	0.17
	8429.00	89.05	359.41	220.3	879.98	-1457.60	6752.60	2091.60	1096.03	94.00	0.79	-0.62	-0.49
	8524.00	89.72	358.67	220.3	974.96	-1459.19	6753.62	2092.62	1190.10	95.00	1.05	0.71	-0.78
	8618.00	90.18	359.99	223.0	1068.95	-1460.29	6753.71	2092.71	1283.12	94.00	1.49	0.49	1.40
	8713.00	89.78	359.81	223.0	1163.95	-1460.45	6753.74	2092.74	1376.99	95.00	0.46	-0.42	-0.19
	8808.00	89.69	358.64	225.7	1258.94	-1461.74	6754.18	2093.18	1471.02	95.00	1.24	-0.09	-1.23
	8903.00	89.54	359.59	225.7	1353.92	-1463.21	6754.82	2093.82	1565.07	95.00	1.01	-0.16	1.00
	8998.00	89.63	359.30	225.7	1448.92	-1464.13	6755.50	2094.50	1659.05	95.00	0.32	0.09	-0.31
	9092.00	90.31	359.44	228.4	1542.91	-1465.16	6755.55	2094.55	1752.06	94.00	0.74	0.72	0.15
	9187.00	89.82	359.44	228.4	1637.91	-1466.09	6755.45	2094.45	1846.05	95.00	0.52	-0.52	0.00
	9282.00	89.94	359.62	228.4	1732.90	-1466.87	6755.64	2094.64	1940.01	95.00	0.23	0.13	0.19
	9376.00	90.12	359.23	228.4	1826.90	-1467.81	6755.60	2094.60	2033.01	94.00	0.46	0.19	-0.41
	9471.00	89.75	359.72	231.1	1921.89	-1468.68	6755.70	2094.70	2126.98	95.00	0.65	-0.39	0.52
	9565.00	90.22	359.44	231.1	2015.89	-1469.37	6755.73	2094.73	2219.94	94.00	0.58	0.50	-0.30
	9660.00	89.72	359.59	231.1	2110.89	-1470.18	6755.78	2094.78	2313.90	95.00	0.55	-0.53	0.16
	9755.00	89.60	359.79	233.8	2205.88	-1470.69	6756.34	2095.34	2407.82	95.00	0.25	-0.13	0.21
	9850.00	89.54	359.71	233.8	2300.88	-1471.10	6757.05	2096.05	2501.73	95.00	0.11	-0.06	-0.08
	9944.00	89.51	359.49	233.8	2394.87	-1471.76	6757.83	2096.83	2594.68	94.00	0.24	-0.03	-0.23
	10039.00	89.69	359.30	236.5	2489.87	-1472.76	6758.50	2097.50	2688.67	95.00	0.28	0.19	-0.20
	10134.00	89.66	359.40	236.5	2584.86	-1473.84	6759.04	2098.04	2782.68	95.00	0.11	-0.03	0.11
	10228.00	89.66	359.49	236.5	2678.85	-1474.75	6759.59	2098.59	2875.67	94.00	0.10	-0.00	0.10
	10323.00	89.57	359.25	236.5	2773.85	-1475.80	6760.23	2099.23	2969.67	95.00	0.27	-0.09	-0.25
	10417.00	89.54	359.59	233.8	2867.84	-1476.75	6760.96	2099.96	3062.66	94.00	0.36	-0.03	0.36
	10512.00	89.85	359.38	236.5	2962.83	-1477.60	6761.47	2100.47	3156.63	95.00	0.39	0.33	-0.22
	10606.00	89.94	359.51	236.5	3056.83	-1478.51	6761.64	2100.64	3249.62	94.00	0.17	0.10	0.14
	10701.00	90.49	359.99	239.2	3151.83	-1478.93	6761.28	2100.28	3343.53	95.00	0.77	0.58	0.51
	10796.00	89.69	358.68	239.2	3246.82	-1480.03	6761.13	2100.13	3437.54	95.00	1.62	-0.84	-1.38
	10890.00	90.43	359.67	239.2	3340.80	-1481.38	6761.04	2100.04	3530.59	94.00	1.31	0.79	1.05
	10985.00	90.12	359.60	236.5	3435.80	-1481.99	6760.58	2099.58	3624.53	95.00	0.33	-0.33	-0.07
	11079.00	90.55	359.77	236.5	3529.80	-1482.50	6760.03	2099.03	3717.46	94.00	0.49	0.46	0.18
	11174.00	89.69	358.99	239.2	3624.79	-1483.53	6759.83	2098.83	3811.45	95.00	1.22	-0.91	-0.82
	11269.00	89.85	359.52	239.2	3719.78	-1484.77	6760.21	2099.21	3905.48	95.00	0.58	0.17	0.56
	11363.00	90.00	359.85	239.2	3813.78	-1485.28	6760.34	2099.34	3998.41	94.00	0.39	0.16	0.35
	11458.00	89.57	359.23	241.9	3908.78	-1486.05	6760.69	2099.69	4092.37	95.00	0.79	-0.45	-0.65
	11552.00	90.37	359.78	241.9	4002.77	-1486.86	6760.74	2099.74	4185.35	94.00	1.03	0.85	0.59
	11647.00	90.15	359.39	241.9	4097.77	-1487.55	6760.31	2099.31	4279.30	95.00	0.47	-0.23	-0.41
	11741.00	89.85	359.00	244.6	4191.76	-1488.87	6760.31	2099.31	4372.35	94.00	0.52	-0.32	-0.41
	11836.00	90.25	359.81	241.9	4286.75	-1489.85	6760.23	2099.23	4466.34	95.00	0.95	0.42	0.85
	11931.00	90.12	359.47	244.6	4381.75	-1490.45	6759.92	2098.92	4560.27	95.00	0.38	-0.14	-0.36
	12025.00	90.25	359.50	244.6	4475.74	-1491.30	6759.62	2098.62	4653.25	94.00	0.14	0.14	0.03
	12120.00	90.15	359.04	247.3	4570.74	-1492.51	6759.29	2098.29	4747.28	95.00	0.50	-0.11	-0.48
	12214.00	90.09	358.84	247.3	4664.72	-1494.25	6759.09	2098.09	4840.39	94.00	0.22	-0.06	-0.21
	12309.00	90.18	359.29	247.3	4759.71	-1495.80	6758.86	2097.86	4934.46	95.00	0.48	0.09	0.47
	12404.00	89.82	359.25	247.3	4854.70	-1497.01	6758.86	2097.86	5028.48	95.00	0.38	-0.38	-0.04

	12498.00	89.82	359.08	250.0	4948.69	-1498.38	6759.16	2098.16	5121.54	94.00	0.18	-0.00	-0.18
	12593.00	90.55	359.17	250.0	5043.68	-1499.83	6758.85	2097.85	5215.60	95.00	0.77	0.77	0.09
	12687.00	89.82	359.30	250.0	5137.67	-1501.08	6758.55	2097.55	5308.64	94.00	0.79	-0.78	0.14
	12782.00	90.43	359.74	250.0	5232.66	-1501.88	6758.34	2097.34	5402.60	95.00	0.79	0.64	0.46
	12877.00	90.00	359.28	252.7	5327.66	-1502.69	6757.99	2096.99	5496.57	95.00	0.66	-0.45	-0.48
	12971.00	90.34	359.44	252.7	5421.65	-1503.74	6757.71	2096.71	5589.58	94.00	0.40	0.36	0.17
	13066.00	90.55	359.48	252.7	5516.64	-1504.63	6756.97	2095.97	5683.56	95.00	0.23	0.22	0.04
	13160.00	90.55	0.34	252.7	5610.64	-1504.78	6756.07	2095.07	5776.43	94.00	0.91	-0.00	0.91
	13255.00	89.97	359.43	252.7	5705.64	-1504.97	6755.64	2094.64	5870.30	95.00	1.14	-0.61	-0.96
	13349.00	90.31	359.76	252.7	5799.63	-1505.64	6755.41	2094.41	5963.26	94.00	0.50	0.36	0.35
	13444.00	89.78	359.48	255.4	5894.63	-1506.27	6755.33	2094.33	6057.19	95.00	0.63	-0.56	-0.29
	13539.00	89.48	358.08	252.7	5989.60	-1508.29	6755.94	2094.94	6151.33	95.00	1.51	-0.32	-1.47
	13634.00	90.34	359.05	255.4	6084.57	-1510.67	6756.09	2095.09	6245.51	95.00	1.36	0.91	1.02
	13728.00	90.46	359.49	255.4	6178.56	-1511.87	6755.44	2094.44	6338.54	94.00	0.49	0.13	0.47
	13823.00	90.18	358.97	255.4	6273.55	-1513.14	6754.91	2093.91	6432.57	95.00	0.62	-0.29	-0.55
	13917.00	89.85	359.64	255.4	6367.54	-1514.28	6754.88	2093.88	6525.60	94.00	0.79	-0.35	0.71
	14012.00	90.03	359.47	255.4	6462.54	-1515.02	6754.98	2093.98	6619.55	95.00	0.26	0.19	-0.18
	14107.00	90.00	359.38	255.4	6557.54	-1515.97	6754.96	2093.96	6713.54	95.00	0.10	-0.03	-0.09
	14201.00	89.88	358.54	258.1	6651.52	-1517.68	6755.06	2094.06	6806.64	94.00	0.90	-0.13	-0.89
	14296.00	90.28	0.91	258.1	6746.51	-1518.14	6754.92	2093.92	6900.55	95.00	2.53	0.42	2.49
	14391.00	90.22	2.53	258.1	6841.47	-1515.29	6754.51	2093.51	6993.90	95.00	1.71	-0.06	1.71
	14485.00	90.12	3.08	258.1	6935.35	-1510.69	6754.23	2093.23	7085.93	94.00	0.59	-0.11	0.59
	14580.00	89.94	1.27	255.4	7030.28	-1507.08	6754.18	2093.18	7179.14	95.00	1.91	-0.19	-1.91
	14675.00	90.22	0.53	258.1	7125.27	-1505.59	6754.05	2093.05	7272.74	95.00	0.83	0.29	-0.78
	14770.00	89.54	359.15	258.1	7220.26	-1505.85	6754.25	2093.25	7366.62	95.00	1.62	-0.72	-1.45
	14864.00	89.57	357.94	258.1	7314.23	-1508.24	6754.98	2093.98	7459.81	94.00	1.29	0.03	-1.29
	14959.00	89.91	357.29	252.7	7409.14	-1512.19	6755.41	2094.41	7554.19	95.00	0.77	0.36	-0.68
	15053.00	89.88	359.13	247.3	7503.09	-1515.13	6755.58	2094.58	7647.45	94.00	1.96	-0.03	1.96
	15147.00	89.91	0.67	250.0	7597.09	-1515.29	6755.75	2094.75	7740.33	94.00	1.64	0.03	1.64
	15242.00	89.78	0.63	250.0	7692.08	-1514.22	6756.01	2095.01	7834.00	95.00	0.14	-0.14	-0.04
	15337.00	89.69	0.32	252.7	7787.08	-1513.43	6756.45	2095.45	7927.72	95.00	0.34	-0.09	-0.33
	15431.00	89.94	0.42	252.7	7881.08	-1512.82	6756.75	2095.75	8020.47	94.00	0.29	0.27	0.11
	15526.00	89.35	358.93	255.4	7976.07	-1513.36	6757.34	2096.34	8114.40	95.00	1.69	-0.62	-1.57
	15621.00	89.94	1.70	255.4	8071.06	-1512.84	6757.93	2096.93	8208.15	95.00	2.98	0.62	2.92
	15715.00	89.60	359.95	255.4	8165.04	-1511.48	6758.31	2097.31	8300.78	94.00	1.90	-0.36	-1.86
	15810.00	89.91	1.22	258.1	8260.04	-1510.51	6758.71	2097.71	8394.46	95.00	1.38	0.33	1.34
	15905.00	90.03	0.97	258.1	8355.02	-1508.70	6758.76	2097.76	8488.00	95.00	0.29	0.13	-0.26
	15999.00	90.00	1.45	260.8	8449.00	-1506.71	6758.74	2097.74	8580.53	94.00	0.51	-0.03	0.51
	16094.00	90.09	2.27	260.8	8543.95	-1503.63	6758.66	2097.66	8673.84	95.00	0.87	0.09	0.86
	16188.00	89.88	0.45	263.5	8637.92	-1501.40	6758.69	2097.69	8766.32	94.00	1.95	-0.22	-1.94
	16283.00	90.28	359.30	263.5	8732.91	-1501.61	6758.56	2097.56	8860.19	95.00	1.28	0.42	-1.21
	16377.00	89.85	0.59	266.2	8826.91	-1501.70	6758.45	2097.45	8953.06	94.00	1.45	-0.46	1.37
	16472.00	90.18	359.15	266.2	8921.91	-1501.91	6758.42	2097.42	9046.94	95.00	1.56	0.35	-1.52
	16566.00	90.06	359.71	258.1	9015.90	-1502.85	6758.23	2097.23	9139.93	94.00	0.61	-0.13	0.60
	16661.00	90.34	358.97	263.5	9110.90	-1503.94	6757.90	2096.90	9233.94	95.00	0.83	0.29	-0.78
	16756.00	90.52	0.50	266.2	9205.89	-1504.38	6757.18	2096.18	9327.84	95.00	1.62	0.19	1.61
	16850.00	90.40	0.21	269.0	9299.88	-1503.80	6756.43	2095.43	9420.60	94.00	0.33	-0.13	-0.31
	17039.00	90.12	0.75	271.7	9488.88	-1502.22	6755.57	2094.57	9607.05	189.00	0.32	-0.15	0.29
	17134.00	90.37	0.26	271.7	9583.87	-1501.38	6755.16	2094.16	9700.75	95.00	0.58	0.26	-0.52
	17228.00	90.49	0.76	271.7	9677.86	-1500.54	6754.46	2093.46	9793.47	94.00	0.55	0.13	0.53
	17260.00	89.97	0.05	271.7	9709.86	-1500.32	6754.33	2093.33	9825.05	32.00	2.75	-1.62	-2.22
Projection	17284.00	89.97	0.05	N/A	9733.86	-1500.29	6754.34	2093.34	9848.75	24.00	0.00	0.00	-0.00