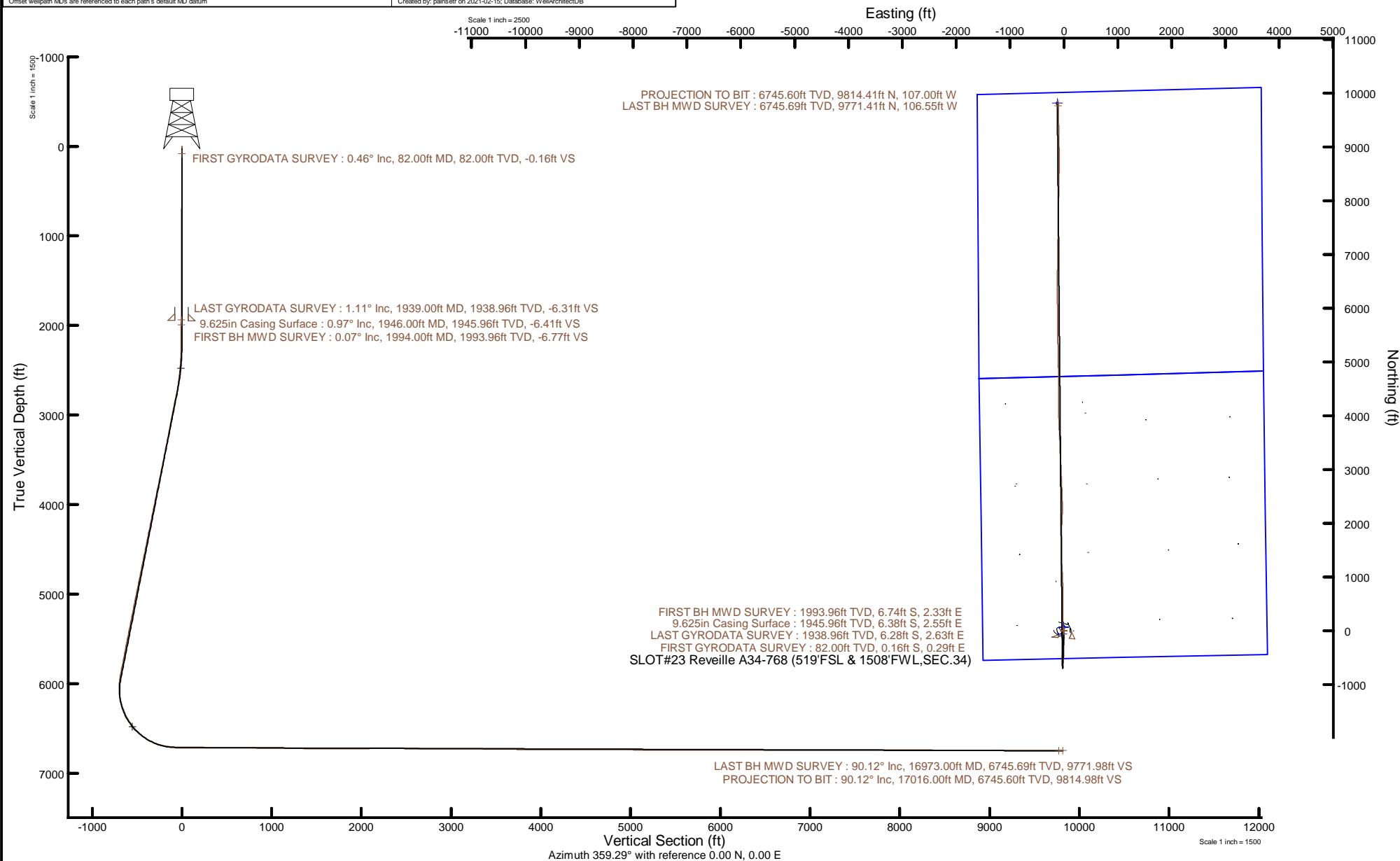


NOBLE ENERGY, INC

Location: COLORADO Slot: SLOT#23 Reveille A34-768 (519'FSL & 1508'FWL,SEC.34)
Field: WELD COUNTY (NOBLE NAD 83 GRID) Well: Reveille A34-768
Facility: SEC.34-T06N-R64W Wellbore: Reveille A34-768 PWB



Plot reference wellpath is Reveille A34-768 PWP Rev-B.0	Grid System: NAD83 / Lambert Colorado SP, Northern Zone (501), US feet
True vertical depths are referenced to H&P 517 (30) (RT)	North Reference: Grid north
Reference wellpath measured depths are referenced to H&P 517 (30) (RT)	Scale: True distance
H&P 517 (30) (RT) to Mean Sea Level: 4661 feet	Coordinates are in feet referenced to Slot
Mean Sea Level to Mud line (At Slot: SLOT#23 Reveille A34-768 (519'FSL & 1508'FWL,SEC.34)): 0 feet	Depths are in feet
Offset wellpath MDs are referenced to each path's default MD datum	Created by: painsrtr on 2021-02-15; Database: WellArchitectDB



REFERENCE WELLPATH IDENTIFICATION

Operator	NOBLE ENERGY, INC	Well	Reveille A34-768
Field	WELD COUNTY (NOBLE NAD 83 GRID)	API	0512350792
Facility	SEC.34-T06N-R64W	Wellbore	Reveille A34-768 AWB
Slot	SLOT#23 Reveille A34-768 (519'FSL & 1508'FWL,SEC.34)		

REPORT SETUP INFORMATION

Projection System	NAD83 / Lambert Colorado SP, Northern Zone (501), US feet	Software System	WellArchitect® 6.0
North Reference	Grid	User	Painsetr
Scale	0.999962	Report Generated	2/15/2021 at 1:23:42 PM
Convergence at slot	0.62° East	Database	WellArchitectDB

WELLPATH LOCATION

	Local coordinates		Grid coordinates		Geographic coordinates	
	North[ft]	East[ft]	Easting[US ft]	Northing[US ft]	Latitude	Longitude
Slot Location	-2732.75	887.74	3267127.14	1403466.70	40.4369500°	-104.5403300°
Facility Reference Pt			3266239.44	1406199.34	40.4444770°	-104.5434130°
Field Reference Pt			3000000.00	4454105.15	48.7761986°	-105.5000000°

WELLPATH DATUM

Calculation method	Minimum curvature	H&P 517 (30') (RT) to Facility Vertical Datum	4661.00ft
Horizontal Reference Pt	Slot	H&P 517 (30') (RT) to Mean Sea Level	4661.00ft
Vertical Reference Pt	H&P 517 (30') (RT)	H&P 517 (30') (RT) to Mud Line at Slot (SLOT#23 Reveille A34-768 (519'FSL & 1508'FWL,SEC.34))	4661.00ft
MD Reference Pt	H&P 517 (30') (RT)	Section Origin	N 0.00, E 0.00 ft
Field Vertical Reference	Mean Sea Level	Section Azimuth	359.29°

REFERENCE WELLPATH IDENTIFICATION

Operator	NOBLE ENERGY, INC	Well	Reveille A34-768
Field	WELD COUNTY (NOBLE NAD 83 GRID)	API	0512350792
Facility	SEC.34-T06N-R64W	Wellbore	Reveille A34-768 AWB
Slot	SLOT#23 Reveille A34-768 (519'FSL & 1508'FWL,SEC.34)		

WELLPATH DATA (181 stations)

MD [ft]	Inclination [°]	Azimuth [°]	TVD [ft]	Vert Sect [ft]	North [ft]	East [ft]	Grid East [US ft]	Grid North [US ft]	Latitude	Longitude	DLS [°/100ft]	Comments
0.00	0.000	118.930	0.00	0.00	0.00	0.00	3267127.14	1403466.70	40.4369500	-104.5403300	0.00	
82.00	0.460	118.930	82.00	-0.16	-0.16	0.29	3267127.43	1403466.54	40.4369496	-104.5403290	0.56	FIRST GYRODATA SURVEY
175.00	0.290	96.100	175.00	-0.38	-0.36	0.85	3267127.99	1403466.34	40.4369490	-104.5403270	0.24	
267.00	0.100	127.170	267.00	-0.45	-0.44	1.14	3267128.28	1403466.26	40.4369488	-104.5403259	0.23	
361.00	0.170	39.530	361.00	-0.40	-0.38	1.30	3267128.44	1403466.32	40.4369489	-104.5403254	0.21	
456.00	0.290	183.100	456.00	-0.53	-0.51	1.38	3267128.52	1403466.19	40.4369486	-104.5403251	0.46	
551.00	0.370	152.800	550.99	-1.04	-1.02	1.50	3267128.64	1403465.68	40.4369471	-104.5403246	0.20	
645.00	0.290	134.880	644.99	-1.48	-1.46	1.81	3267128.95	1403465.24	40.4369459	-104.5403236	0.14	
740.00	0.230	165.140	739.99	-1.84	-1.82	2.03	3267129.17	1403464.88	40.4369450	-104.5403228	0.16	
835.00	0.280	153.940	834.99	-2.24	-2.21	2.18	3267129.32	1403464.49	40.4369439	-104.5403223	0.07	
929.00	0.210	193.860	928.99	-2.61	-2.58	2.24	3267129.38	1403464.12	40.4369428	-104.5403221	0.19	
1024.00	0.230	205.870	1023.99	-2.95	-2.92	2.11	3267129.25	1403463.78	40.4369419	-104.5403225	0.05	
1119.00	0.340	106.870	1118.99	-3.20	-3.18	2.30	3267129.44	1403463.52	40.4369412	-104.5403219	0.46	
1213.00	0.300	133.750	1212.99	-3.46	-3.43	2.75	3267129.89	1403463.27	40.4369405	-104.5403203	0.16	
1308.00	0.490	156.450	1307.99	-4.01	-3.97	3.09	3267130.23	1403462.73	40.4369390	-104.5403191	0.26	
1403.00	0.510	190.120	1402.98	-4.80	-4.76	3.18	3267130.32	1403461.94	40.4369368	-104.5403188	0.31	
1497.00	0.340	192.770	1496.98	-5.48	-5.44	3.04	3267130.18	1403461.26	40.4369350	-104.5403193	0.18	
1592.00	0.370	290.020	1591.98	-5.65	-5.61	2.69	3267129.83	1403461.09	40.4369345	-104.5403206	0.56	
1687.00	0.570	18.690	1686.98	-5.09	-5.06	2.55	3267129.69	1403461.64	40.4369360	-104.5403210	0.71	
1782.00	0.410	98.620	1781.97	-4.70	-4.66	3.04	3267130.18	1403462.04	40.4369371	-104.5403193	0.68	
1876.00	0.830	200.150	1875.97	-5.39	-5.35	3.14	3267130.28	1403461.35	40.4369352	-104.5403189	1.06	
1939.00	1.110	215.750	1938.96	-6.31	-6.28	2.63	3267129.76	1403460.42	40.4369327	-104.5403208	0.61	LAST GYRODATA SURVEY
1994.00	0.070	158.590	1993.96	-6.77	-6.74	2.33	3267129.47	1403459.96	40.4369314	-104.5403219	1.95	FIRST BH MWD SURVEY
2088.00	0.120	122.410	2087.96	-6.88	-6.85	2.43	3267129.57	1403459.85	40.4369311	-104.5403215	0.08	
2183.00	0.100	150.260	2182.96	-7.00	-6.97	2.56	3267129.70	1403459.73	40.4369308	-104.5403211	0.06	
2278.00	1.580	178.150	2277.94	-8.39	-8.35	2.64	3267129.78	1403458.35	40.4369270	-104.5403208	1.57	
2373.00	2.810	178.360	2372.87	-12.02	-11.99	2.75	3267129.89	1403454.71	40.4369170	-104.5403206	1.29	
2467.00	4.850	179.890	2466.66	-18.30	-18.27	2.82	3267129.96	1403448.43	40.4368998	-104.5403206	2.17	
2562.00	6.640	179.770	2561.18	-27.81	-27.78	2.85	3267129.99	1403438.92	40.4368737	-104.5403208	1.88	
2657.00	8.210	180.120	2655.38	-40.09	-40.05	2.86	3267130.00	1403426.65	40.4368400	-104.5403213	1.65	

REFERENCE WELLPATH IDENTIFICATION

Operator	NOBLE ENERGY, INC	Well	Reveille A34-768
Field	WELD COUNTY (NOBLE NAD 83 GRID)	API	0512350792
Facility	SEC.34-T06N-R64W	Wellbore	Reveille A34-768 AWB
Slot	SLOT#23 Reveille A34-768 (519'FSL & 1508'FWL,SEC.34)		

WELLPATH DATA (181 stations)

MD [ft]	Inclination [°]	Azimuth [°]	TVD [ft]	Vert Sect [ft]	North [ft]	East [ft]	Grid East [US ft]	Grid North [US ft]	Latitude	Longitude	DLS [°/100ft]	Comments
2751.00	11.720	179.890	2747.94	-56.35	-56.32	2.86	3267130.00	1403410.38	40.4367953	-104.5403219	3.73	
2846.00	11.280	180.600	2841.04	-75.29	-75.26	2.78	3267129.92	1403391.45	40.4367434	-104.5403229	0.49	
2941.00	11.660	179.090	2934.14	-94.17	-94.15	2.84	3267129.98	1403372.56	40.4366915	-104.5403235	0.51	
3036.00	11.210	180.350	3027.25	-113.01	-112.98	2.94	3267130.08	1403353.72	40.4366398	-104.5403239	0.54	
3130.00	10.330	181.360	3119.60	-130.57	-130.54	2.68	3267129.82	1403336.16	40.4365916	-104.5403255	0.96	
3225.00	10.580	190.400	3213.03	-147.64	-147.64	0.90	3267128.04	1403319.07	40.4365447	-104.5403325	1.74	
3320.00	11.610	180.750	3306.26	-165.75	-165.78	-0.80	3267126.34	1403300.93	40.4364950	-104.5403393	2.23	
3414.00	11.100	180.710	3398.42	-184.25	-184.28	-1.03	3267126.11	1403282.43	40.4364442	-104.5403409	0.54	
3509.00	10.820	181.650	3491.68	-202.31	-202.34	-1.40	3267125.74	1403264.37	40.4363947	-104.5403429	0.35	
3603.00	11.700	179.590	3583.87	-220.65	-220.69	-1.59	3267125.55	1403246.02	40.4363443	-104.5403443	1.03	
3698.00	11.600	179.580	3676.92	-239.84	-239.87	-1.45	3267125.69	1403226.84	40.4362917	-104.5403445	0.11	
3792.00	11.500	178.950	3769.01	-258.66	-258.69	-1.21	3267125.93	1403208.02	40.4362400	-104.5403444	0.17	
3887.00	11.680	179.540	3862.08	-277.74	-277.78	-0.96	3267126.18	1403188.93	40.4361876	-104.5403442	0.23	
3981.00	11.560	180.690	3954.15	-296.67	-296.71	-0.99	3267126.15	1403170.00	40.4361356	-104.5403451	0.28	
4075.00	11.360	182.180	4046.28	-315.33	-315.38	-1.46	3267125.68	1403151.34	40.4360844	-104.5403475	0.38	
4170.00	11.370	182.640	4139.41	-334.03	-334.08	-2.25	3267124.89	1403132.63	40.4360331	-104.5403511	0.10	
4264.00	11.220	182.570	4231.59	-352.41	-352.47	-3.08	3267124.06	1403114.24	40.4359826	-104.5403548	0.16	
4359.00	11.530	182.370	4324.73	-371.12	-371.19	-3.89	3267123.25	1403095.52	40.4359313	-104.5403584	0.33	
4453.00	11.550	182.160	4416.83	-389.89	-389.98	-4.63	3267122.51	1403076.73	40.4358797	-104.5403618	0.05	
4548.00	11.150	182.910	4509.97	-408.56	-408.66	-5.46	3267121.68	1403058.06	40.4358285	-104.5403655	0.45	
4643.00	11.410	182.510	4603.13	-427.11	-427.22	-6.34	3267120.80	1403039.50	40.4357776	-104.5403694	0.29	
4737.00	11.380	182.410	4695.28	-445.65	-445.78	-7.13	3267120.01	1403020.94	40.4357267	-104.5403730	0.04	
4832.00	11.290	182.310	4788.43	-464.30	-464.43	-7.90	3267119.24	1403002.29	40.4356755	-104.5403764	0.10	
4926.00	11.570	182.180	4880.56	-482.90	-483.05	-8.63	3267118.51	1402983.67	40.4356244	-104.5403798	0.30	
5021.00	11.410	182.510	4973.66	-501.80	-501.95	-9.41	3267117.73	1402964.77	40.4355726	-104.5403833	0.18	
5115.00	11.050	184.140	5065.86	-520.06	-520.23	-10.46	3267116.68	1402946.49	40.4355224	-104.5403878	0.51	
5210.00	11.290	183.240	5159.06	-538.41	-538.59	-11.65	3267115.49	1402928.13	40.4354721	-104.5403928	0.31	
5304.00	11.400	183.650	5251.22	-556.85	-557.05	-12.76	3267114.38	1402909.67	40.4354214	-104.5403975	0.15	
5399.00	11.280	184.680	5344.37	-575.46	-575.68	-14.11	3267113.03	1402891.04	40.4353703	-104.5404031	0.25	
5493.00	11.110	187.140	5436.58	-593.58	-593.83	-15.99	3267111.15	1402872.89	40.4353206	-104.5404105	0.54	

REFERENCE WELLPATH IDENTIFICATION

Operator	NOBLE ENERGY, INC	Well	Reveille A34-768
Field	WELD COUNTY (NOBLE NAD 83 GRID)	API	0512350792
Facility	SEC.34-T06N-R64W	Wellbore	Reveille A34-768 AWB
Slot	SLOT#23 Reveille A34-768 (519'FSL & 1508'FWL,SEC.34)		

WELLPATH DATA (181 stations)

MD [ft]	Inclination [°]	Azimuth [°]	TVD [ft]	Vert Sect [ft]	North [ft]	East [ft]	Grid East [US ft]	Grid North [US ft]	Latitude	Longitude	DLS [°/100ft]	Comments
5588.00	11.190	183.300	5529.79	-611.85	-612.11	-17.66	3267109.48	1402854.61	40.4352704	-104.5404172	0.79	
5682.00	10.800	185.920	5622.06	-629.69	-629.98	-19.09	3267108.05	1402836.74	40.4352214	-104.5404231	0.67	
5777.00	10.870	191.010	5715.37	-647.31	-647.63	-21.72	3267105.42	1402819.10	40.4351731	-104.5404332	1.01	
5871.00	11.270	182.330	5807.63	-665.16	-665.51	-23.79	3267103.35	1402801.22	40.4351241	-104.5404413	1.82	
5966.00	11.250	182.600	5900.80	-683.68	-684.04	-24.58	3267102.56	1402782.69	40.4350732	-104.5404449	0.06	
6061.00	5.220	168.330	5994.79	-697.19	-697.54	-24.13	3267103.01	1402769.19	40.4350362	-104.5404438	6.65	
6155.00	3.380	0.510	6088.68	-698.62	-698.96	-23.24	3267103.90	1402767.77	40.4350322	-104.5404407	9.10	
6250.00	12.020	357.090	6182.74	-685.91	-686.26	-23.72	3267103.42	1402780.47	40.4350671	-104.5404419	9.10	
6345.00	19.300	356.720	6274.15	-660.31	-660.67	-25.12	3267102.02	1402806.06	40.4351374	-104.5404459	7.66	
6439.00	26.430	357.700	6360.71	-623.83	-624.21	-26.85	3267100.29	1402842.51	40.4352375	-104.5404507	7.60	
6534.00	35.400	359.810	6442.13	-575.08	-575.47	-27.79	3267099.35	1402891.25	40.4353713	-104.5404522	9.51	
6628.00	43.470	1.380	6514.67	-515.44	-515.82	-27.10	3267100.04	1402950.90	40.4355350	-104.5404474	8.65	
6723.00	51.340	1.280	6578.92	-445.60	-445.96	-25.48	3267101.66	1403020.76	40.4357267	-104.5404389	8.28	
6818.00	59.600	1.130	6632.72	-367.45	-367.78	-23.85	3267103.30	1403098.94	40.4359413	-104.5404300	8.70	
6913.00	70.440	0.050	6672.78	-281.49	-281.80	-23.00	3267104.15	1403184.91	40.4361772	-104.5404236	11.46	
7007.00	80.750	359.970	6696.14	-190.58	-190.88	-22.98	3267104.16	1403275.83	40.4364268	-104.5404200	10.97	
7102.00	85.990	0.050	6707.10	-96.25	-96.54	-22.96	3267104.18	1403370.16	40.4366857	-104.5404162	5.52	
7196.00	89.780	0.340	6710.57	-2.34	-2.63	-22.64	3267104.50	1403464.07	40.4369435	-104.5404114	4.04	
7291.00	89.660	0.120	6711.03	92.64	92.37	-22.26	3267104.88	1403559.07	40.4372042	-104.5404064	0.26	
7385.00	89.350	0.140	6711.85	186.63	186.37	-22.05	3267105.09	1403653.06	40.4374622	-104.5404020	0.33	
7480.00	89.690	0.520	6712.64	281.61	281.36	-21.50	3267105.64	1403748.05	40.4377229	-104.5403963	0.54	
7575.00	89.410	359.700	6713.39	376.59	376.36	-21.32	3267105.82	1403843.04	40.4379836	-104.5403920	0.91	
7669.00	89.570	359.930	6714.23	470.59	470.35	-21.62	3267105.52	1403937.04	40.4382416	-104.5403894	0.30	
7764.00	89.720	0.770	6714.81	565.57	565.35	-21.04	3267106.10	1404032.03	40.4385023	-104.5403836	0.90	
7859.00	89.690	359.750	6715.30	660.55	660.35	-20.61	3267106.53	1404127.02	40.4387631	-104.5403784	1.07	
7953.00	89.080	359.400	6716.31	754.54	754.34	-21.31	3267105.83	1404221.01	40.4390211	-104.5403772	0.75	
8048.00	88.920	357.620	6717.97	849.52	849.29	-23.78	3267103.36	1404315.95	40.4392818	-104.5403824	1.88	
8143.00	89.230	357.800	6719.50	944.47	944.20	-27.57	3267099.57	1404410.86	40.4395424	-104.5403924	0.38	
8237.00	89.260	357.520	6720.74	1038.42	1038.11	-31.41	3267095.73	1404504.77	40.4398003	-104.5404025	0.30	
8332.00	90.520	355.910	6720.92	1133.32	1132.95	-36.86	3267090.29	1404599.61	40.4400607	-104.5404184	2.15	

REFERENCE WELLPATH IDENTIFICATION

Operator	NOBLE ENERGY, INC	Well	Reveille A34-768
Field	WELD COUNTY (NOBLE NAD 83 GRID)	API	0512350792
Facility	SEC.34-T06N-R64W	Wellbore	Reveille A34-768 AWB
Slot	SLOT#23 Reveille A34-768 (519'FSL & 1508'FWL,SEC.34)		

WELLPATH DATA (181 stations)

MD [ft]	Inclination [°]	Azimuth [°]	TVD [ft]	Vert Sect [ft]	North [ft]	East [ft]	Grid East [US ft]	Grid North [US ft]	Latitude	Longitude	DLS [°/100ft]	Comments
8426.00	89.820	357.760	6720.65	1227.23	1226.80	-42.05	3267085.10	1404693.45	40.4403185	-104.5404333	2.10	
8521.00	88.830	359.320	6721.77	1322.21	1321.76	-44.47	3267082.68	1404788.41	40.4405792	-104.5404384	1.94	
8616.00	89.170	359.650	6723.42	1417.20	1416.74	-45.32	3267081.82	1404883.39	40.4408399	-104.5404377	0.50	
8711.00	90.280	0.060	6723.88	1512.19	1511.74	-45.56	3267081.58	1404978.38	40.4411007	-104.5404349	1.25	
8805.00	88.640	0.220	6724.77	1606.17	1605.73	-45.33	3267081.81	1405072.37	40.4413586	-104.5404304	1.75	
8900.00	89.450	358.520	6726.35	1701.15	1700.71	-46.37	3267080.77	1405167.34	40.4416193	-104.5404305	1.98	
8995.00	91.350	1.270	6725.69	1796.13	1795.69	-46.55	3267080.59	1405262.32	40.4418801	-104.5404274	3.52	
9090.00	90.650	1.620	6724.03	1891.05	1890.65	-44.15	3267082.99	1405357.27	40.4421406	-104.5404151	0.82	
9184.00	90.310	1.550	6723.24	1984.97	1984.61	-41.55	3267085.59	1405451.23	40.4423984	-104.5404021	0.37	
9279.00	90.520	2.750	6722.55	2079.85	2079.54	-37.99	3267089.15	1405546.15	40.4426589	-104.5403856	1.28	
9374.00	91.080	3.130	6721.23	2174.65	2174.40	-33.12	3267094.02	1405641.01	40.4429191	-104.5403644	0.71	
9468.00	90.460	359.630	6719.96	2268.56	2268.35	-30.85	3267096.29	1405734.96	40.4431769	-104.5403527	3.78	
9563.00	89.690	358.510	6719.84	2363.56	2363.34	-32.40	3267094.74	1405829.94	40.4434377	-104.5403545	1.43	
9657.00	89.140	358.160	6720.80	2457.54	2457.29	-35.13	3267092.01	1405923.89	40.4436956	-104.5403607	0.69	
9752.00	89.720	357.890	6721.74	2552.51	2552.23	-38.40	3267088.74	1406018.83	40.4439563	-104.5403687	0.67	
9847.00	89.320	357.940	6722.54	2647.48	2647.16	-41.86	3267085.28	1406113.76	40.4442170	-104.5403775	0.42	
9942.00	90.370	358.270	6722.79	2742.46	2742.11	-45.00	3267082.14	1406208.70	40.4444777	-104.5403850	1.16	
10036.00	89.940	357.270	6722.54	2836.42	2836.04	-48.66	3267078.49	1406302.62	40.4447356	-104.5403945	1.16	
10131.00	89.780	358.030	6722.77	2931.38	2930.96	-52.55	3267074.59	1406397.54	40.4449962	-104.5404048	0.82	
10226.00	89.780	357.770	6723.14	3026.35	3025.89	-56.03	3267071.11	1406492.47	40.4452569	-104.5404137	0.27	
10320.00	88.800	357.860	6724.30	3120.31	3119.81	-59.62	3267067.53	1406586.39	40.4455148	-104.5404229	1.05	
10415.00	89.260	357.360	6725.91	3215.26	3214.72	-63.58	3267063.56	1406681.29	40.4457754	-104.5404334	0.72	
10509.00	89.380	358.020	6727.03	3309.22	3308.63	-67.37	3267059.78	1406775.20	40.4460333	-104.5404434	0.71	
10604.00	88.980	357.720	6728.39	3404.18	3403.56	-70.90	3267056.25	1406870.12	40.4462939	-104.5404524	0.53	
10698.00	89.260	358.890	6729.83	3498.15	3497.50	-73.68	3267053.47	1406964.06	40.4465518	-104.5404587	1.28	
10793.00	89.600	357.590	6730.77	3593.13	3592.45	-76.59	3267050.55	1407059.01	40.4468125	-104.5404655	1.41	
10888.00	89.080	356.860	6731.87	3688.06	3687.33	-81.19	3267045.95	1407153.89	40.4470731	-104.5404783	0.94	
10982.00	89.600	357.810	6732.95	3782.00	3781.22	-85.56	3267041.58	1407247.77	40.4473309	-104.5404904	1.15	
11077.00	89.630	357.300	6733.59	3876.95	3876.14	-89.62	3267037.53	1407342.68	40.4475916	-104.5405013	0.54	
11202.00	89.510	359.810	6734.53	4001.93	4001.08	-92.77	3267034.38	1407467.62	40.4479346	-104.5405077	2.01	

REFERENCE WELLPATH IDENTIFICATION

Operator	NOBLE ENERGY, INC	Well	Reveille A34-768
Field	WELD COUNTY (NOBLE NAD 83 GRID)	API	0512350792
Facility	SEC.34-T06N-R64W	Wellbore	Reveille A34-768 AWB
Slot	SLOT#23 Reveille A34-768 (519'FSL & 1508'FWL,SEC.34)		

WELLPATH DATA (181 stations)

MD [ft]	Inclination [°]	Azimuth [°]	TVD [ft]	Vert Sect [ft]	North [ft]	East [ft]	Grid East [US ft]	Grid North [US ft]	Latitude	Longitude	DLS [°/100ft]	Comments
11296.00	90.120	0.460	6734.83	4095.92	4095.08	-92.55	3267034.60	1407561.62	40.4481926	-104.5405033	0.95	
11391.00	89.750	358.980	6734.94	4190.91	4190.08	-93.01	3267034.13	1407656.61	40.4484533	-104.5405012	1.61	
11485.00	89.820	359.800	6735.29	4284.91	4284.07	-94.01	3267033.13	1407750.60	40.4487113	-104.5405012	0.88	
11580.00	90.060	359.970	6735.39	4379.90	4379.07	-94.20	3267032.94	1407845.59	40.4489721	-104.5404982	0.31	
11674.00	90.180	359.750	6735.19	4473.90	4473.07	-94.43	3267032.71	1407939.59	40.4492301	-104.5404953	0.27	
11769.00	89.850	359.050	6735.17	4568.90	4568.06	-95.43	3267031.72	1408034.58	40.4494909	-104.5404952	0.81	
11863.00	89.690	359.330	6735.55	4662.90	4662.05	-96.76	3267030.39	1408128.57	40.4497489	-104.5404963	0.34	
11958.00	89.720	358.830	6736.04	4757.89	4757.04	-98.28	3267028.86	1408223.55	40.4500096	-104.5404981	0.53	
12053.00	89.690	359.350	6736.53	4852.89	4852.03	-99.79	3267027.35	1408318.53	40.4502704	-104.5404999	0.55	
12147.00	89.630	359.710	6737.08	4946.89	4946.02	-100.56	3267026.58	1408412.52	40.4505284	-104.5404990	0.39	
12242.00	89.850	358.680	6737.51	5041.89	5041.01	-101.90	3267025.25	1408507.51	40.4507892	-104.5405001	1.11	
12337.00	89.690	358.430	6737.90	5136.88	5135.98	-104.29	3267022.85	1408602.47	40.4510499	-104.5405050	0.31	
12431.00	89.540	358.810	6738.53	5230.87	5229.95	-106.55	3267020.59	1408696.44	40.4513079	-104.5405095	0.43	
12526.00	89.780	358.870	6739.09	5325.86	5324.93	-108.48	3267018.67	1408791.41	40.4515686	-104.5405127	0.26	
12620.00	89.510	359.650	6739.67	5419.86	5418.92	-109.69	3267017.45	1408885.40	40.4518266	-104.5405134	0.88	
12715.00	89.690	359.590	6740.34	5514.86	5513.91	-110.32	3267016.82	1408980.39	40.4520874	-104.5405120	0.20	
12810.00	89.940	359.670	6740.64	5609.86	5608.91	-110.94	3267016.21	1409075.39	40.4523482	-104.5405105	0.28	
12904.00	89.910	359.510	6740.77	5703.85	5702.91	-111.61	3267015.54	1409169.38	40.4526062	-104.5405092	0.17	
12999.00	89.850	359.410	6740.97	5798.85	5797.90	-112.50	3267014.64	1409264.37	40.4528669	-104.5405088	0.12	
13093.00	90.120	359.340	6740.99	5892.85	5891.90	-113.53	3267013.62	1409358.36	40.4531250	-104.5405088	0.30	
13188.00	90.180	358.770	6740.74	5987.85	5986.88	-115.10	3267012.05	1409453.34	40.4533857	-104.5405107	0.60	
13283.00	90.000	358.620	6740.59	6082.85	6081.86	-117.26	3267009.89	1409548.32	40.4536465	-104.5405148	0.25	
13377.00	89.750	359.780	6740.80	6176.84	6175.85	-118.57	3267008.57	1409642.30	40.4539045	-104.5405159	1.26	
13472.00	89.940	0.330	6741.05	6271.84	6270.85	-118.48	3267008.66	1409737.30	40.4541652	-104.5405119	0.61	
13566.00	90.090	0.350	6741.03	6365.82	6364.84	-117.92	3267009.22	1409831.29	40.4544232	-104.5405062	0.16	
13661.00	90.370	359.860	6740.65	6460.81	6459.84	-117.75	3267009.40	1409926.29	40.4546839	-104.5405019	0.59	
13756.00	90.090	359.820	6740.27	6555.80	6554.84	-118.01	3267009.13	1410021.28	40.4549447	-104.5404991	0.30	
13850.00	89.850	0.750	6740.32	6649.79	6648.84	-117.55	3267009.60	1410115.27	40.4552027	-104.5404938	1.02	
13945.00	90.090	0.900	6740.37	6744.75	6743.83	-116.18	3267010.97	1410210.26	40.4554633	-104.5404852	0.30	
14040.00	89.780	0.880	6740.47	6839.72	6838.82	-114.70	3267012.44	1410305.25	40.4557240	-104.5404762	0.33	

REFERENCE WELLPATH IDENTIFICATION

Operator	NOBLE ENERGY, INC	Well	Reveille A34-768
Field	WELD COUNTY (NOBLE NAD 83 GRID)	API	0512350792
Facility	SEC.34-T06N-R64W	Wellbore	Reveille A34-768 AWB
Slot	SLOT#23 Reveille A34-768 (519'FSL & 1508'FWL,SEC.34)		

WELLPATH DATA (181 stations)

MD [ft]	Inclination [°]	Azimuth [°]	TVD [ft]	Vert Sect [ft]	North [ft]	East [ft]	Grid East [US ft]	Grid North [US ft]	Latitude	Longitude	DLS [°/100ft]	Comments
14134.00	89.970	1.300	6740.68	6933.67	6932.80	-112.91	3267014.23	1410399.22	40.4559819	-104.5404661	0.49	
14229.00	90.180	0.420	6740.55	7028.63	7027.79	-111.49	3267015.66	1410494.21	40.4562426	-104.5404573	0.95	
14324.00	90.000	0.430	6740.41	7123.61	7122.79	-110.78	3267016.36	1410589.20	40.4565033	-104.5404511	0.19	
14418.00	89.970	1.160	6740.43	7217.58	7216.78	-109.48	3267017.66	1410683.19	40.4567612	-104.5404427	0.78	
14513.00	90.120	0.190	6740.36	7312.55	7311.77	-108.36	3267018.78	1410778.18	40.4570219	-104.5404350	1.03	
14608.00	89.970	0.380	6740.28	7407.54	7406.77	-107.89	3267019.26	1410873.17	40.4572827	-104.5404296	0.25	
14702.00	89.880	0.320	6740.40	7501.52	7500.77	-107.31	3267019.83	1410967.17	40.4575406	-104.5404239	0.12	
14797.00	90.180	0.610	6740.35	7596.50	7595.76	-106.54	3267020.60	1411062.16	40.4578014	-104.5404174	0.44	
14892.00	89.910	1.020	6740.28	7691.47	7690.75	-105.19	3267021.95	1411157.15	40.4580620	-104.5404089	0.52	
14986.00	89.970	1.060	6740.38	7785.42	7784.74	-103.49	3267023.66	1411251.13	40.4583199	-104.5403991	0.08	
15081.00	90.000	0.330	6740.40	7880.39	7879.73	-102.33	3267024.81	1411346.11	40.4585806	-104.5403913	0.77	
15178.00	89.850	0.740	6740.53	7977.37	7976.72	-101.43	3267025.72	1411443.11	40.4588468	-104.5403843	0.45	
15270.00	89.750	0.920	6740.85	8069.33	8068.71	-100.09	3267027.05	1411535.09	40.4590993	-104.5403759	0.22	
15365.00	89.850	1.290	6741.18	8164.29	8163.70	-98.26	3267028.88	1411630.07	40.4593599	-104.5403656	0.40	
15459.00	89.510	1.160	6741.71	8258.23	8257.67	-96.25	3267030.89	1411724.04	40.4596178	-104.5403547	0.39	
15554.00	89.660	1.030	6742.40	8353.18	8352.65	-94.44	3267032.71	1411819.02	40.4598784	-104.5403445	0.21	
15649.00	89.910	0.890	6742.75	8448.14	8447.64	-92.85	3267034.30	1411914.00	40.4601391	-104.5403351	0.30	
15743.00	89.690	0.920	6743.08	8542.10	8541.63	-91.36	3267035.78	1412007.99	40.4603970	-104.5403261	0.24	
15838.00	89.880	1.380	6743.44	8637.05	8636.61	-89.45	3267037.69	1412102.96	40.4606577	-104.5403156	0.52	
15933.00	90.220	359.650	6743.35	8732.02	8731.60	-88.60	3267038.54	1412197.95	40.4609184	-104.5403088	1.86	
16027.00	89.720	358.810	6743.40	8826.02	8825.59	-89.86	3267037.28	1412291.94	40.4611764	-104.5403097	1.04	
16122.00	89.600	359.490	6743.97	8921.02	8920.58	-91.27	3267035.87	1412386.92	40.4614371	-104.5403111	0.73	
16217.00	89.780	359.390	6744.48	9016.02	9015.57	-92.20	3267034.94	1412481.91	40.4616979	-104.5403107	0.22	
16311.00	89.910	359.220	6744.73	9110.02	9109.56	-93.34	3267033.80	1412575.90	40.4619559	-104.5403111	0.23	
16500.00	90.060	358.430	6744.78	9299.01	9298.52	-97.22	3267029.93	1412764.85	40.4624747	-104.5403177	0.43	
16595.00	89.850	358.360	6744.86	9394.00	9393.48	-99.88	3267027.27	1412859.81	40.4627354	-104.5403236	0.23	
16689.00	89.850	358.530	6745.11	9487.99	9487.45	-102.43	3267024.71	1412953.77	40.4629934	-104.5403291	0.18	
16784.00	89.690	359.000	6745.49	9582.98	9582.43	-104.48	3267022.67	1413048.74	40.4632541	-104.5403328	0.52	
16878.00	89.970	359.540	6745.77	9676.98	9676.42	-105.67	3267021.47	1413142.73	40.4635121	-104.5403334	0.65	
16973.00	90.120	359.400	6745.69	9771.98	9771.41	-106.55	3267020.59	1413237.72	40.4637729	-104.5403329	0.22	LAST BH MWD SURVEY

REFERENCE WELLPATH IDENTIFICATION

Operator	NOBLE ENERGY, INC	Well	Reveille A34-768
Field	WELD COUNTY (NOBLE NAD 83 GRID)	API	0512350792
Facility	SEC.34-T06N-R64W	Wellbore	Reveille A34-768 AWB
Slot	SLOT#23 Reveille A34-768 (519'FSL & 1508'FWL,SEC.34)		

WELLPATH DATA (181 stations) † = interpolated, ‡ = extrapolated station

MD [ft]	Inclination [°]	Azimuth [°]	TVD [ft]	Vert Sect [ft]	North [ft]	East [ft]	Grid East [US ft]	Grid North [US ft]	Latitude	Longitude	DLS [°/100ft]	Comments
17016.00†	90.120	359.400	6745.60	9814.98	9814.41	-107.00	3267020.14	1413280.72	40.4638909	-104.5403328	0.00	PROJECTION TO BIT

HOLE & CASING SECTIONS - Ref Wellbore: Reveille A34-768 AWB Ref Wellpath: Reveille A34-768 AWP

String/Diameter	Start MD [ft]	End MD [ft]	Interval [ft]	Start TVD [ft]	End TVD [ft]	Start N/S [ft]	Start E/W [ft]	End N/S [ft]	End E/W [ft]
9.625in Casing Surface	30.00	1946.00	1916.00	30.00	1945.96	-0.02	0.04	-6.38	2.55

REFERENCE WELLPATH IDENTIFICATION

Operator	NOBLE ENERGY, INC	Well	Reveille A34-768
Field	WELD COUNTY (NOBLE NAD 83 GRID)	API	0512350792
Facility	SEC.34-T06N-R64W	Wellbore	Reveille A34-768 AWB
Slot	SLOT#23 Reveille A34-768 (519'FSL & 1508'FWL,SEC.34)		

TARGETS

Name	TVD [ft]	North [ft]	East [ft]	Grid East [US ft]	Grid North [US ft]	Latitude	Longitude	Shape
SEC.26-T06N-R64W	0.00	65.54	-3.49	3267123.65	1403532.24	40.4371300	-104.5403400	polygon
	2D Polygon: dimensions not calculated							
SEC.27-T06N-R64W	0.00	65.54	-3.49	3267123.65	1403532.24	40.4371300	-104.5403400	polygon
	2D Polygon: dimensions not calculated							
SEC.34-T06N-R64W	0.00	65.54	-3.49	3267123.65	1403532.24	40.4371300	-104.5403400	polygon
	2D Polygon: dimensions not calculated							
SEC.35-T06N-R64W	0.00	65.54	-3.49	3267123.65	1403532.24	40.4371300	-104.5403400	polygon
	2D Polygon: dimensions not calculated							
Reveille A34-768 TPZ REV-1 (460'FSL & 1474'FWL,SEC.34)	6713.00	-61.43	-34.14	3267093.00	1403405.27	40.4367824	-104.5404550	point
Reveille A34-768 BHL REV-1 (200'FNL & 1489'FWL,SEC.27)	6750.00	9814.69	-122.20	3267004.94	1413281.00	40.4638921	-104.5403874	point

WELLPATH COMPOSITION - Ref Wellbore: Reveille A34-768 AWB Ref Wellpath: Reveille A34-768 AWP

Start MD [ft]	End MD [ft]	Positional Uncertainty Model	Log Name/Comment	Wellbore	Survey Date
0.00	1939.00	Gyrodatta 2015 - GC+DROP+COND	Gyrodatta 2015 - GC+DROP+COND 13-1/2" <82 - 1939>	Reveille A34-768 AWB	2/9/2021
1939.00	17016.00	OWSG MWD rev2 (MS+IFR1) NOBLE	OWSG MWD rev2 (MS+IFR1) NOBLE 8-1/2" <1994 - 16973>	Reveille A34-768 AWB	2/9/2021

REFERENCE WELLPATH IDENTIFICATION

Operator	NOBLE ENERGY, INC	Well	Reveille A34-768
Field	WELD COUNTY (NOBLE NAD 83 GRID)	API	0512350792
Facility	SEC.34-T06N-R64W	Wellbore	Reveille A34-768 AWB
Slot	SLOT#23 Reveille A34-768 (519'FSL & 1508'FWL,SEC.34)		

WELLPATH COMMENTS

MD [ft]	Inclination [°]	Azimuth [°]	TVD [ft]	Comment
82.00	0.460	118.930	82.00	FIRST GYRODATA SURVEY
1939.00	1.110	215.750	1938.96	LAST GYRODATA SURVEY
1994.00	0.070	158.590	1993.96	FIRST BH MWD SURVEY
16973.00	90.120	359.400	6745.69	LAST BH MWD SURVEY
17016.00	90.120	359.400	6745.60	PROJECTION TO BIT