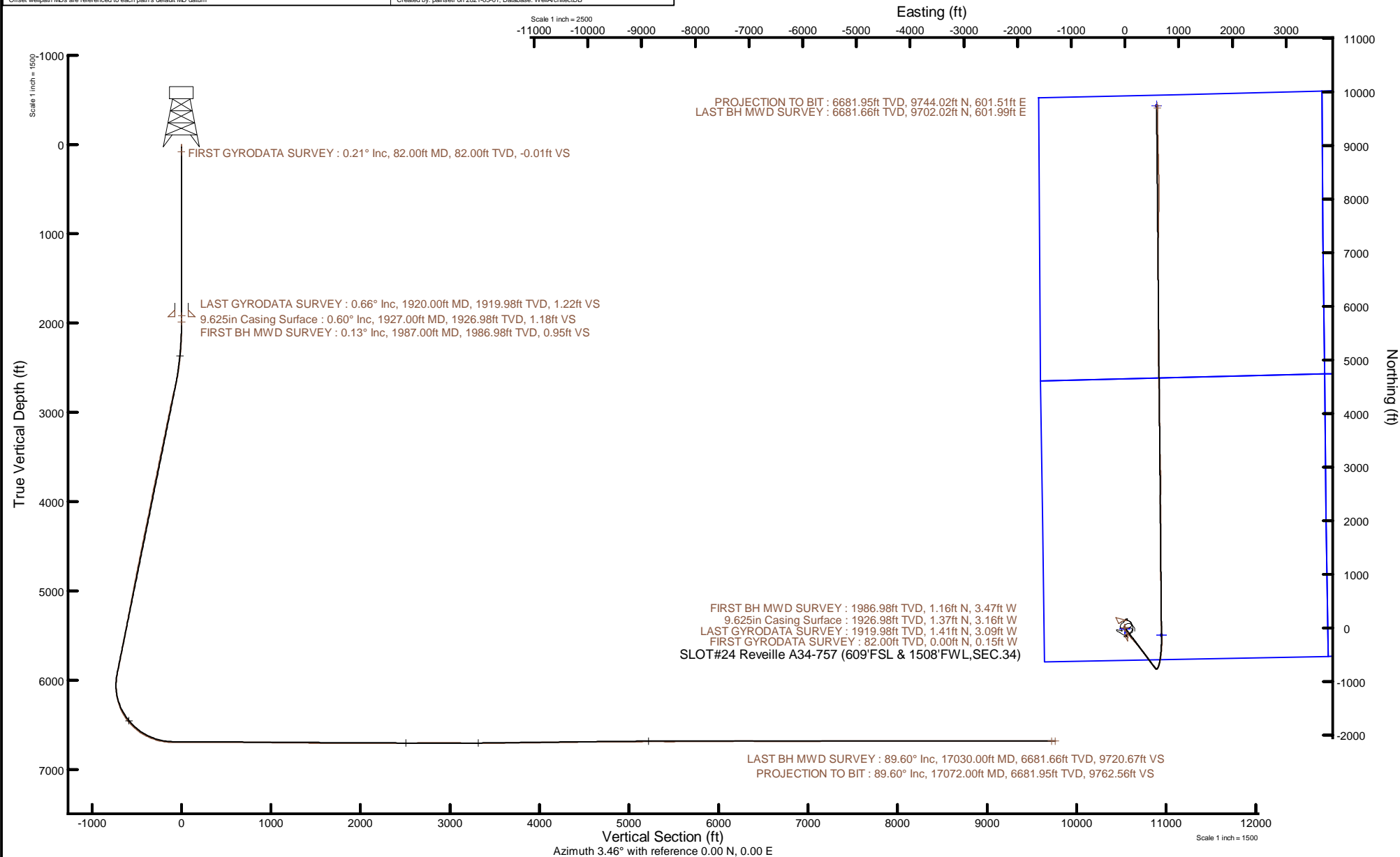


# NOBLE ENERGY, INC

Location: COLORADO Slot: SLOT#24 Reveille A34-757 (609°FSL & 1508°FWL, SEC.34)  
Field: WELD COUNTY (NOBLE NAD 83 GRID) Well: Reveille A34-757  
Facility: SEC.34-T06N-R64W Wellbore: Reveille A34-757 PWB



Plot reference wellpath is Reveille A34-757 PWP Rev-C.0	Grid System: NAD83 / Lambert Colorado SP, Northern Zone (501), US feet
True vertical depths are referenced to H&P 517 (30) (RT)	North Reference: Grid north
Reference wellpath measured depths are referenced to H&P 517 (30) (RT)	Scale: True distance
H&P 517 (30) (RT) to Mean Sea Level: 4662 feet	Coordinates are in feet referenced to Slot
Mean Sea Level to Mud line (At Slot: SLOT#24 Reveille A34-757 (609°FSL & 1508°FWL, SEC.34)): 0 feet	Depths are in feet
Offset wellpath MDs are referenced to each path's default MD datum	Created by: painsrtr on 2021-03-01; Database: WellArchitectDB



## REFERENCE WELLPATH IDENTIFICATION

Operator	NOBLE ENERGY, INC	Well	Reveille A34-757
Field	WELD COUNTY (NOBLE NAD 83 GRID)	API	0512350789
Facility	SEC.34-T06N-R64W	Wellbore	Reveille A34-757 AWB
Slot	SLOT#24 Reveille A34-757 (609'FSL & 1508'FWL,SEC.34)		

## REPORT SETUP INFORMATION

Projection System	NAD83 / Lambert Colorado SP, Northern Zone (501), US feet	Software System	WellArchitect® 6.0
North Reference	Grid	User	Painsetr
Scale	0.999962	Report Generated	3/1/2021 at 3:21:53 PM
Convergence at slot	0.62° East	Database	WellArchitectDB

## WELLPATH LOCATION

	Local coordinates		Grid coordinates		Geographic coordinates	
	North[ft]	East[ft]	Easting[US ft]	Northing[US ft]	Latitude	Longitude
Slot Location	-2645.34	884.00	3267123.41	1403554.10	40.4371900°	-104.5403400°
Facility Reference Pt			3266239.44	1406199.34	40.4444770°	-104.5434130°
Field Reference Pt			3000000.00	4454105.15	48.7761986°	-105.5000000°

## WELLPATH DATUM

Calculation method	Minimum curvature	H&P 517 (30') (RT) to Facility Vertical Datum	4662.00ft
Horizontal Reference Pt	Slot	H&P 517 (30') (RT) to Mean Sea Level	4662.00ft
Vertical Reference Pt	H&P 517 (30') (RT)	H&P 517 (30') (RT) to Mud Line at Slot (SLOT#24 Reveille A34-757 (609'FSL & 1508'FWL,SEC.34))	4662.00ft
MD Reference Pt	H&P 517 (30') (RT)	Section Origin	N 0.00, E 0.00 ft
Field Vertical Reference	Mean Sea Level	Section Azimuth	3.46°

## REFERENCE WELLPATH IDENTIFICATION

Operator	NOBLE ENERGY, INC	Well	Reveille A34-757
Field	WELD COUNTY (NOBLE NAD 83 GRID)	API	0512350789
Facility	SEC.34-T06N-R64W	Wellbore	Reveille A34-757 AWB
Slot	SLOT#24 Reveille A34-757 (609'FSL & 1508'FWL,SEC.34)		

## WELLPATH DATA (178 stations)

MD [ft]	Inclination [°]	Azimuth [°]	TVD [ft]	Vert Sect [ft]	North [ft]	East [ft]	Grid East [US ft]	Grid North [US ft]	Latitude	Longitude	DLS [°/100ft]	Comments
0.00	0.000	270.740	0.00	0.00	0.00	0.00	3267123.41	1403554.10	40.4371900	-104.5403400	0.00	
82.00	0.210	270.740	82.00	-0.01	0.00	-0.15	3267123.26	1403554.10	40.4371900	-104.5403405	0.26	FIRST GYRODATA SURVEY
175.00	0.340	327.250	175.00	0.21	0.24	-0.47	3267122.94	1403554.34	40.4371907	-104.5403417	0.31	
267.00	0.230	303.110	267.00	0.52	0.57	-0.77	3267122.64	1403554.67	40.4371916	-104.5403428	0.17	
361.00	0.350	355.380	361.00	0.90	0.96	-0.95	3267122.46	1403555.06	40.4371927	-104.5403434	0.29	
456.00	0.440	126.470	456.00	0.99	1.03	-0.68	3267122.73	1403555.13	40.4371928	-104.5403424	0.76	
551.00	0.210	7.440	550.99	0.96	0.98	-0.37	3267123.04	1403555.08	40.4371927	-104.5403413	0.60	
645.00	0.050	334.350	644.99	1.17	1.19	-0.36	3267123.05	1403555.29	40.4371933	-104.5403413	0.18	
740.00	0.070	240.740	739.99	1.17	1.20	-0.43	3267122.98	1403555.30	40.4371933	-104.5403415	0.09	
835.00	0.330	0.190	834.99	1.41	1.45	-0.48	3267122.93	1403555.55	40.4371940	-104.5403417	0.39	
929.00	0.280	228.720	928.99	1.52	1.57	-0.65	3267122.76	1403555.67	40.4371943	-104.5403423	0.59	
1024.00	0.090	188.110	1023.99	1.29	1.34	-0.84	3267122.57	1403555.44	40.4371937	-104.5403430	0.23	
1119.00	0.290	204.850	1118.99	0.99	1.05	-0.95	3267122.46	1403555.15	40.4371929	-104.5403434	0.22	
1213.00	0.170	296.260	1212.99	0.82	0.89	-1.17	3267122.24	1403554.99	40.4371925	-104.5403442	0.36	
1308.00	0.080	35.950	1307.99	0.93	1.01	-1.26	3267122.15	1403555.11	40.4371928	-104.5403445	0.21	
1403.00	0.180	174.410	1402.99	0.84	0.91	-1.21	3267122.20	1403555.01	40.4371925	-104.5403443	0.26	
1497.00	0.360	274.530	1496.99	0.70	0.79	-1.49	3267121.92	1403554.89	40.4371922	-104.5403453	0.46	
1592.00	0.220	298.190	1591.99	0.78	0.90	-1.95	3267121.46	1403555.00	40.4371925	-104.5403470	0.19	
1687.00	0.340	3.310	1686.99	1.14	1.27	-2.09	3267121.32	1403555.37	40.4371935	-104.5403475	0.33	
1782.00	0.220	312.330	1781.99	1.53	1.67	-2.21	3267121.20	1403555.77	40.4371947	-104.5403479	0.28	
1876.00	0.490	244.160	1875.99	1.45	1.62	-2.71	3267120.71	1403555.72	40.4371945	-104.5403497	0.49	
1920.00	0.660	240.370	1919.98	1.22	1.41	-3.09	3267120.32	1403555.51	40.4371940	-104.5403511	0.40	LAST GYRODATA SURVEY
1987.00	0.130	214.670	1986.98	0.95	1.16	-3.47	3267119.94	1403555.26	40.4371933	-104.5403524	0.81	FIRST BH MWD SURVEY
2082.00	1.060	143.860	2081.98	0.18	0.36	-3.02	3267120.39	1403554.46	40.4371911	-104.5403508	1.08	
2176.00	3.250	146.450	2175.90	-2.62	-2.56	-1.03	3267122.38	1403551.54	40.4371830	-104.5403438	2.33	
2271.00	4.790	147.210	2270.67	-7.97	-8.14	2.61	3267126.02	1403545.96	40.4371676	-104.5403310	1.62	
2366.00	6.130	152.680	2365.23	-15.53	-15.98	7.08	3267130.49	1403538.12	40.4371459	-104.5403152	1.51	
2461.00	7.910	152.080	2459.52	-25.47	-26.27	12.47	3267135.88	1403527.83	40.4371175	-104.5402962	1.88	
2555.00	10.140	150.940	2552.35	-37.97	-39.22	19.52	3267142.93	1403514.88	40.4370818	-104.5402714	2.38	
2650.00	13.560	152.350	2645.31	-54.56	-56.40	28.75	3267152.16	1403497.70	40.4370344	-104.5402389	3.61	

### REFERENCE WELLPATH IDENTIFICATION

Operator	NOBLE ENERGY, INC	Well	Reveille A34-757
Field	WELD COUNTY (NOBLE NAD 83 GRID)	API	0512350789
Facility	SEC.34-T06N-R64W	Wellbore	Reveille A34-757 AWB
Slot	SLOT#24 Reveille A34-757 (609'FSL & 1508'FWL,SEC.34)		

### WELLPATH DATA (178 stations)

MD [ft]	Inclination [°]	Azimuth [°]	TVD [ft]	Vert Sect [ft]	North [ft]	East [ft]	Grid East [US ft]	Grid North [US ft]	Latitude	Longitude	DLS [°/100ft]	Comments
2745.00	15.500	152.180	2737.27	-74.95	-77.49	39.85	3267163.25	1403476.61	40.4369761	-104.5401999	2.04	
2839.00	15.840	152.300	2827.77	-96.66	-99.96	51.67	3267175.08	1403454.15	40.4369141	-104.5401583	0.36	
2934.00	16.180	138.550	2919.12	-117.14	-121.37	66.47	3267189.87	1403432.74	40.4368549	-104.5401060	4.00	
3029.00	15.990	139.480	3010.40	-135.93	-141.23	83.73	3267207.14	1403412.87	40.4367999	-104.5400447	0.34	
3124.00	15.730	140.240	3101.79	-154.73	-161.08	100.47	3267223.87	1403393.03	40.4367449	-104.5399854	0.35	
3218.00	15.770	139.180	3192.26	-173.16	-180.54	116.97	3267240.37	1403373.56	40.4366910	-104.5399269	0.31	
3313.00	15.820	140.140	3283.67	-191.83	-200.25	133.70	3267257.11	1403353.86	40.4366364	-104.5398675	0.28	
3407.00	15.620	139.570	3374.16	-210.27	-219.72	150.12	3267273.53	1403334.39	40.4365825	-104.5398093	0.27	
3502.00	15.610	140.580	3465.65	-228.86	-239.33	166.53	3267289.94	1403314.78	40.4365282	-104.5397511	0.29	
3596.00	16.080	139.020	3556.08	-247.42	-258.93	183.10	3267306.50	1403295.18	40.4364739	-104.5396923	0.67	
3691.00	16.050	139.080	3647.37	-266.20	-278.78	200.33	3267323.73	1403275.33	40.4364189	-104.5396312	0.04	
3785.00	16.050	139.510	3737.70	-284.85	-298.49	217.28	3267340.68	1403255.63	40.4363643	-104.5395711	0.13	
3974.00	15.360	139.170	3919.65	-321.58	-337.30	250.61	3267374.01	1403216.82	40.4362568	-104.5394529	0.37	
4068.00	15.010	140.030	4010.37	-339.33	-356.04	266.57	3267389.97	1403198.07	40.4362048	-104.5393963	0.44	
4163.00	15.020	142.940	4102.12	-357.62	-375.30	281.89	3267405.29	1403178.82	40.4361515	-104.5393420	0.79	
4257.00	15.060	143.170	4192.90	-376.20	-394.79	296.55	3267419.95	1403159.32	40.4360976	-104.5392901	0.08	
4352.00	14.940	143.320	4284.67	-394.98	-414.49	311.27	3267434.66	1403139.63	40.4360431	-104.5392380	0.13	
4447.00	14.700	143.760	4376.51	-413.61	-434.03	325.71	3267449.10	1403120.08	40.4359890	-104.5391869	0.28	
4541.00	14.480	143.890	4467.47	-431.85	-453.15	339.68	3267463.08	1403100.97	40.4359361	-104.5391374	0.24	
4636.00	14.760	143.710	4559.40	-450.31	-472.50	353.85	3267477.24	1403081.62	40.4358826	-104.5390873	0.30	
4731.00	14.650	143.580	4651.29	-468.83	-491.92	368.14	3267491.54	1403062.20	40.4358289	-104.5390367	0.12	
4825.00	14.400	143.650	4742.28	-486.94	-510.90	382.13	3267505.52	1403043.22	40.4357764	-104.5389872	0.27	
4920.00	14.530	143.340	4834.27	-505.12	-529.97	396.24	3267519.64	1403024.15	40.4357236	-104.5389373	0.16	
5014.00	14.640	142.660	4925.24	-523.13	-548.87	410.49	3267533.88	1403005.25	40.4356713	-104.5388868	0.22	
5108.00	13.940	143.530	5016.33	-540.81	-567.42	424.42	3267547.82	1402986.70	40.4356200	-104.5388375	0.78	
5203.00	13.570	143.200	5108.61	-558.09	-585.55	437.90	3267561.29	1402968.57	40.4355698	-104.5387898	0.40	
5297.00	14.120	143.860	5199.88	-575.34	-603.64	451.27	3267574.66	1402950.48	40.4355198	-104.5387425	0.61	
5486.00	14.070	142.730	5383.19	-610.52	-640.54	478.78	3267602.17	1402913.58	40.4354177	-104.5386451	0.15	
5581.00	14.130	143.800	5475.33	-628.20	-659.09	492.62	3267616.01	1402895.04	40.4353663	-104.5385961	0.28	
5675.00	14.730	143.650	5566.36	-646.21	-677.97	506.48	3267629.87	1402876.16	40.4353141	-104.5385471	0.64	

### REFERENCE WELLPATH IDENTIFICATION

Operator	NOBLE ENERGY, INC	Well	Reveille A34-757
Field	WELD COUNTY (NOBLE NAD 83 GRID)	API	0512350789
Facility	SEC.34-T06N-R64W	Wellbore	Reveille A34-757 AWB
Slot	SLOT#24 Reveille A34-757 (609'FSL & 1508'FWL,SEC.34)		

### WELLPATH DATA (178 stations)

MD [ft]	Inclination [°]	Azimuth [°]	TVD [ft]	Vert Sect [ft]	North [ft]	East [ft]	Grid East [US ft]	Grid North [US ft]	Latitude	Longitude	DLS [°/100ft]	Comments
5770.00	14.270	143.960	5658.33	-664.52	-697.17	520.53	3267643.92	1402856.96	40.4352610	-104.5384974	0.49	
5864.00	14.230	143.260	5749.44	-682.29	-715.79	534.25	3267657.64	1402838.34	40.4352095	-104.5384488	0.19	
5959.00	14.770	144.360	5841.41	-700.61	-734.99	548.29	3267671.68	1402819.14	40.4351564	-104.5383991	0.64	
6054.00	15.190	141.010	5933.19	-719.19	-754.51	563.18	3267686.57	1402799.62	40.4351023	-104.5383464	1.01	
6149.00	10.140	107.500	6025.97	-730.42	-766.72	579.02	3267702.41	1402787.41	40.4350684	-104.5382900	9.17	
6243.00	10.340	65.310	6118.59	-728.45	-765.68	594.60	3267717.98	1402788.45	40.4350707	-104.5382340	7.81	
6338.00	14.560	29.420	6211.47	-713.66	-751.69	608.23	3267731.62	1402802.44	40.4351087	-104.5381844	9.07	
6433.00	21.810	20.430	6301.69	-686.01	-724.71	620.28	3267743.66	1402829.42	40.4351824	-104.5381401	8.16	
6527.00	30.540	17.010	6385.97	-646.01	-685.43	633.39	3267756.77	1402868.69	40.4352898	-104.5380915	9.42	
6622.00	39.980	13.120	6463.46	-592.33	-632.50	647.41	3267770.79	1402921.62	40.4354347	-104.5380391	10.21	
6716.00	48.610	9.630	6530.69	-527.37	-568.20	660.19	3267783.57	1402985.92	40.4356108	-104.5379907	9.54	
6811.00	56.040	7.170	6588.72	-452.52	-493.86	671.08	3267794.47	1403060.26	40.4358145	-104.5379486	8.08	
6906.00	65.800	4.990	6634.84	-369.68	-411.40	679.79	3267803.17	1403142.71	40.4360406	-104.5379141	10.47	
7000.00	73.390	3.020	6667.59	-281.65	-323.59	685.90	3267809.28	1403230.53	40.4362815	-104.5378888	8.31	
7095.00	81.780	358.790	6688.01	-189.08	-230.92	687.31	3267810.69	1403323.19	40.4365357	-104.5378801	9.84	
7189.00	89.850	357.290	6694.86	-95.83	-137.31	684.10	3267807.48	1403416.80	40.4367928	-104.5378880	8.73	
7284.00	89.880	357.520	6695.08	-1.36	-42.41	679.80	3267803.18	1403511.69	40.4370534	-104.5378997	0.24	
7378.00	89.750	357.860	6695.39	92.17	51.52	676.01	3267799.39	1403605.61	40.4373113	-104.5379097	0.39	
7473.00	89.850	359.540	6695.72	186.84	146.49	673.86	3267797.24	1403700.58	40.4375720	-104.5379137	1.77	
7568.00	90.090	359.550	6695.77	281.62	241.48	673.10	3267796.48	1403795.57	40.4378328	-104.5379127	0.25	
7662.00	90.000	358.890	6695.69	375.36	335.48	671.82	3267795.20	1403889.56	40.4380908	-104.5379136	0.71	
7757.00	90.400	0.850	6695.36	470.17	430.47	671.61	3267794.99	1403984.55	40.4383515	-104.5379107	2.11	
7852.00	89.380	359.700	6695.55	565.02	525.47	672.06	3267795.44	1404079.54	40.4386123	-104.5379054	1.62	
7947.00	89.720	359.410	6696.29	659.80	620.46	671.32	3267794.71	1404174.53	40.4388730	-104.5379043	0.47	
8041.00	89.750	359.280	6696.73	753.55	714.45	670.25	3267793.63	1404268.52	40.4391310	-104.5379045	0.14	
8136.00	89.820	359.540	6697.08	848.31	809.45	669.27	3267792.65	1404363.51	40.4393918	-104.5379043	0.28	
8230.00	89.880	358.800	6697.33	942.05	903.44	667.91	3267791.29	1404457.50	40.4396498	-104.5379056	0.79	
8325.00	89.630	359.490	6697.74	1036.78	998.42	666.49	3267789.88	1404552.48	40.4399106	-104.5379070	0.77	
8420.00	90.310	1.210	6697.78	1131.64	1093.42	667.07	3267790.46	1404647.47	40.4401713	-104.5379012	1.95	
8514.00	88.280	358.640	6698.94	1225.44	1187.40	666.95	3267790.33	1404741.45	40.4404292	-104.5378979	3.48	

## REFERENCE WELLPATH IDENTIFICATION

Operator	NOBLE ENERGY, INC	Well	Reveille A34-757
Field	WELD COUNTY (NOBLE NAD 83 GRID)	API	0512350789
Facility	SEC.34-T06N-R64W	Wellbore	Reveille A34-757 AWB
Slot	SLOT#24 Reveille A34-757 (609'FSL & 1508'FWL,SEC.34)		

## WELLPATH DATA (178 stations)

MD [ft]	Inclination [°]	Azimuth [°]	TVD [ft]	Vert Sect [ft]	North [ft]	East [ft]	Grid East [US ft]	Grid North [US ft]	Latitude	Longitude	DLS [°/100ft]	Comments
8609.00	89.260	359.790	6700.98	1320.15	1282.36	665.65	3267789.03	1404836.41	40.4406899	-104.5378989	1.59	
8704.00	89.050	358.380	6702.38	1414.87	1377.34	664.13	3267787.52	1404931.38	40.4409507	-104.5379007	1.50	
8799.00	89.350	0.590	6703.71	1509.62	1472.32	663.28	3267786.66	1405026.36	40.4412114	-104.5379000	2.35	
8893.00	89.510	357.980	6704.64	1603.36	1566.30	662.11	3267785.49	1405120.34	40.4414694	-104.5379006	2.78	
8988.00	89.600	0.350	6705.38	1698.08	1661.28	660.72	3267784.10	1405215.31	40.4417301	-104.5379018	2.50	
9083.00	90.120	359.710	6705.61	1792.91	1756.28	660.77	3267784.15	1405310.31	40.4419908	-104.5378980	0.87	
9178.00	90.250	359.830	6705.31	1887.72	1851.28	660.39	3267783.77	1405405.30	40.4422516	-104.5378956	0.19	
9272.00	90.280	0.970	6704.87	1981.58	1945.27	661.05	3267784.43	1405499.30	40.4425096	-104.5378896	1.21	
9367.00	89.970	0.010	6704.67	2076.45	2040.27	661.86	3267785.24	1405594.29	40.4427703	-104.5378830	1.06	
9461.00	89.780	359.120	6704.87	2170.23	2134.26	661.14	3267784.53	1405688.28	40.4430283	-104.5378819	0.97	
9556.00	90.060	359.840	6705.00	2265.00	2229.26	660.28	3267783.67	1405783.27	40.4432891	-104.5378813	0.81	
9651.00	89.850	359.530	6705.08	2359.80	2324.26	659.76	3267783.14	1405878.27	40.4435498	-104.5378795	0.39	
9746.00	90.620	0.040	6704.69	2454.60	2419.26	659.40	3267782.79	1405973.26	40.4438106	-104.5378770	0.97	
9840.00	90.460	1.170	6703.80	2548.48	2513.24	660.40	3267783.78	1406067.24	40.4440685	-104.5378698	1.21	
9935.00	91.140	0.510	6702.48	2643.37	2608.22	661.79	3267785.17	1406162.22	40.4443292	-104.5378611	1.00	
10124.00	90.060	359.420	6700.50	2832.00	2797.21	661.67	3267785.06	1406351.20	40.4448479	-104.5378542	0.81	
10219.00	89.600	359.330	6700.78	2926.76	2892.20	660.64	3267784.02	1406446.19	40.4451086	-104.5378542	0.49	
10313.00	89.450	358.760	6701.56	3020.48	2986.18	659.07	3267782.45	1406540.17	40.4453666	-104.5378561	0.63	
10408.00	89.510	358.500	6702.42	3115.14	3081.15	656.80	3267780.18	1406635.13	40.4456274	-104.5378606	0.28	
10502.00	89.910	357.870	6702.90	3208.74	3175.10	653.82	3267777.21	1406729.08	40.4458853	-104.5378676	0.79	
10597.00	89.720	358.660	6703.20	3303.35	3270.06	650.95	3267774.33	1406824.03	40.4461460	-104.5378743	0.86	
10692.00	89.850	359.630	6703.56	3398.08	3365.05	649.53	3267772.91	1406919.01	40.4464068	-104.5378756	1.03	
10786.00	89.780	359.400	6703.86	3491.86	3459.04	648.73	3267772.12	1407013.01	40.4466648	-104.5378748	0.26	
10881.00	91.140	359.210	6703.10	3586.60	3554.03	647.58	3267770.96	1407107.99	40.4469256	-104.5378753	1.45	
10975.00	90.520	358.490	6701.74	3680.29	3648.00	645.69	3267769.08	1407201.96	40.4471835	-104.5378784	1.01	
11070.00	90.650	359.510	6700.77	3774.99	3742.98	644.04	3267767.42	1407296.93	40.4474443	-104.5378806	1.08	
11164.00	91.200	359.520	6699.25	3868.76	3836.96	643.24	3267766.62	1407390.91	40.4477023	-104.5378798	0.59	
11259.00	90.370	358.820	6697.95	3963.48	3931.94	641.86	3267765.25	1407485.89	40.4479630	-104.5378811	1.14	
11353.00	90.710	359.490	6697.06	4057.21	4025.93	640.48	3267763.86	1407579.87	40.4482210	-104.5378824	0.80	
11448.00	90.800	359.040	6695.81	4151.95	4120.91	639.26	3267762.64	1407674.85	40.4484817	-104.5378831	0.48	

## REFERENCE WELLPATH IDENTIFICATION

Operator	NOBLE ENERGY, INC	Well	Reveille A34-757
Field	WELD COUNTY (NOBLE NAD 83 GRID)	API	0512350789
Facility	SEC.34-T06N-R64W	Wellbore	Reveille A34-757 AWB
Slot	SLOT#24 Reveille A34-757 (609'FSL & 1508'FWL,SEC.34)		

## WELLPATH DATA (178 stations)

MD [ft]	Inclination [°]	Azimuth [°]	TVD [ft]	Vert Sect [ft]	North [ft]	East [ft]	Grid East [US ft]	Grid North [US ft]	Latitude	Longitude	DLS [°/100ft]	Comments
11543.00	90.680	359.360	6694.58	4246.68	4215.90	637.93	3267761.32	1407769.83	40.4487425	-104.5378841	0.36	
11732.00	90.620	359.420	6692.44	4435.19	4404.87	635.92	3267759.31	1407958.80	40.4492612	-104.5378840	0.04	
11826.00	90.950	358.780	6691.15	4528.91	4498.85	634.44	3267757.83	1408052.77	40.4495192	-104.5378856	0.77	
11921.00	90.520	359.440	6689.93	4623.63	4593.83	632.97	3267756.35	1408147.75	40.4497799	-104.5378872	0.83	
12016.00	89.540	358.520	6689.88	4718.34	4688.81	631.28	3267754.66	1408242.73	40.4500407	-104.5378896	1.41	
12110.00	90.710	358.880	6689.68	4812.01	4782.79	629.15	3267752.53	1408336.70	40.4502987	-104.5378936	1.30	
12205.00	90.150	358.510	6688.97	4906.68	4877.76	626.98	3267750.37	1408431.67	40.4505594	-104.5378977	0.71	
12299.00	90.460	358.780	6688.47	5000.35	4971.73	624.76	3267748.14	1408525.63	40.4508174	-104.5379020	0.44	
12394.00	90.180	359.290	6687.93	5095.07	5066.72	623.16	3267746.54	1408620.61	40.4510782	-104.5379040	0.61	
12489.00	90.890	359.680	6687.05	5189.83	5161.71	622.31	3267745.69	1408715.60	40.4513389	-104.5379034	0.85	
12583.00	89.780	0.160	6686.50	5283.65	5255.70	622.17	3267745.56	1408809.60	40.4515969	-104.5379002	1.29	
12678.00	89.260	359.490	6687.29	5378.46	5350.70	621.88	3267745.27	1408904.59	40.4518577	-104.5378976	0.89	
12773.00	90.250	359.910	6687.70	5473.25	5445.70	621.39	3267744.77	1408999.58	40.4521184	-104.5378956	1.13	
12867.00	90.590	0.180	6687.01	5567.08	5539.69	621.46	3267744.85	1409093.57	40.4523764	-104.5378917	0.46	
12962.00	90.740	0.150	6685.91	5661.92	5634.69	621.73	3267745.12	1409188.56	40.4526371	-104.5378870	0.16	
13056.00	90.280	359.320	6685.07	5755.71	5728.68	621.30	3267744.68	1409282.55	40.4528951	-104.5378849	1.01	
13151.00	90.090	359.670	6684.77	5850.49	5823.68	620.46	3267743.85	1409377.54	40.4531559	-104.5378842	0.42	
13245.00	90.430	359.860	6684.34	5944.29	5917.67	620.08	3267743.46	1409471.54	40.4534139	-104.5378820	0.41	
13340.00	90.250	0.190	6683.77	6039.12	6012.67	620.12	3267743.50	1409566.53	40.4536746	-104.5378781	0.40	
13435.00	90.740	0.270	6682.95	6133.96	6107.67	620.50	3267743.88	1409661.52	40.4539354	-104.5378730	0.52	
13530.00	90.180	359.840	6682.19	6228.79	6202.66	620.59	3267743.98	1409756.52	40.4541961	-104.5378690	0.74	
13624.00	89.750	359.760	6682.25	6322.60	6296.66	620.26	3267743.65	1409850.51	40.4544541	-104.5378665	0.47	
13813.00	89.820	359.250	6682.96	6511.15	6485.65	618.63	3267742.01	1410039.50	40.4549729	-104.5378650	0.27	
13908.00	89.780	359.420	6683.29	6605.90	6580.65	617.53	3267740.91	1410134.49	40.4552336	-104.5378653	0.18	
14003.00	89.820	359.620	6683.62	6700.68	6675.64	616.73	3267740.12	1410229.48	40.4554944	-104.5378644	0.21	
14097.00	89.630	0.020	6684.07	6794.49	6769.64	616.44	3267739.82	1410323.47	40.4557524	-104.5378618	0.47	
14192.00	90.250	359.780	6684.17	6889.31	6864.64	616.27	3267739.66	1410418.47	40.4560132	-104.5378587	0.70	
14287.00	90.370	0.130	6683.66	6984.13	6959.64	616.20	3267739.58	1410513.46	40.4562739	-104.5378553	0.39	
14381.00	90.370	0.570	6683.05	7077.99	7053.64	616.77	3267740.15	1410607.45	40.4565319	-104.5378495	0.47	
14476.00	90.620	0.410	6682.23	7172.86	7148.63	617.58	3267740.97	1410702.44	40.4567926	-104.5378429	0.31	



## REFERENCE WELLPATH IDENTIFICATION

Operator	NOBLE ENERGY, INC	Well	Reveille A34-757
Field	WELD COUNTY (NOBLE NAD 83 GRID)	API	0512350789
Facility	SEC.34-T06N-R64W	Wellbore	Reveille A34-757 AWB
Slot	SLOT#24 Reveille A34-757 (609'FSL & 1508'FWL,SEC.34)		

## WELLPATH DATA (178 stations) † = interpolated, ‡ = extrapolated station

MD [ft]	Inclination [°]	Azimuth [°]	TVD [ft]	Vert Sect [ft]	North [ft]	East [ft]	Grid East [US ft]	Grid North [US ft]	Latitude	Longitude	DLS [°/100ft]	Comments
14571.00	90.220	0.150	6681.53	7267.71	7243.62	618.05	3267741.43	1410797.44	40.4570533	-104.5378376	0.50	
14665.00	90.030	1.260	6681.33	7361.60	7337.62	619.20	3267742.59	1410891.42	40.4573112	-104.5378297	1.20	
14760.00	89.600	0.480	6681.64	7456.50	7432.60	620.65	3267744.03	1410986.41	40.4575719	-104.5378208	0.94	
14855.00	90.860	0.680	6681.25	7551.38	7527.60	621.61	3267744.99	1411081.40	40.4578326	-104.5378137	1.34	
14949.00	90.250	1.140	6680.34	7645.28	7621.58	623.10	3267746.48	1411175.38	40.4580905	-104.5378047	0.81	
15044.00	90.030	1.540	6680.11	7740.21	7716.55	625.32	3267748.71	1411270.34	40.4583511	-104.5377930	0.48	
15138.00	90.280	2.380	6679.86	7834.18	7810.50	628.54	3267751.92	1411364.28	40.4586089	-104.5377778	0.93	
15233.00	90.430	0.850	6679.27	7929.13	7905.45	631.21	3267754.60	1411459.24	40.4588694	-104.5377644	1.62	
15328.00	90.340	1.940	6678.63	8024.06	8000.42	633.53	3267756.91	1411554.20	40.4591300	-104.5377524	1.15	
15422.00	89.780	359.600	6678.53	8117.95	8094.41	634.79	3267758.17	1411648.18	40.4593879	-104.5377442	2.56	
15517.00	89.780	358.750	6678.90	8212.68	8189.40	633.42	3267756.81	1411743.17	40.4596487	-104.5377454	0.89	
15612.00	90.000	358.680	6679.08	8307.36	8284.37	631.29	3267754.68	1411838.14	40.4599094	-104.5377494	0.24	
15706.00	90.090	358.710	6679.00	8401.04	8378.35	629.15	3267752.54	1411932.11	40.4601674	-104.5377534	0.10	
15801.00	89.320	357.820	6679.49	8495.64	8473.30	626.27	3267749.66	1412027.06	40.4604282	-104.5377600	1.24	
15896.00	90.310	358.390	6679.80	8590.23	8568.25	623.13	3267746.52	1412122.00	40.4606888	-104.5377676	1.20	
15990.00	90.060	359.030	6679.50	8683.90	8662.22	621.02	3267744.40	1412215.98	40.4609468	-104.5377716	0.73	
16085.00	90.030	359.360	6679.42	8778.64	8757.21	619.68	3267743.07	1412310.96	40.4612076	-104.5377727	0.35	
16179.00	89.380	358.740	6679.91	8872.36	8851.20	618.12	3267741.51	1412404.94	40.4614656	-104.5377746	0.96	
16274.00	90.120	358.730	6680.32	8967.04	8946.17	616.03	3267739.41	1412499.92	40.4617264	-104.5377784	0.78	
16368.00	89.820	358.590	6680.37	9060.71	9040.15	613.83	3267737.21	1412593.89	40.4619843	-104.5377827	0.35	
16463.00	89.690	358.680	6680.78	9155.37	9135.12	611.56	3267734.95	1412688.85	40.4622451	-104.5377871	0.17	
16557.00	90.580	359.070	6680.56	9249.07	9229.10	609.72	3267733.10	1412782.83	40.4625031	-104.5377901	1.03	
16652.00	89.850	358.680	6680.20	9343.76	9324.08	607.85	3267731.24	1412877.81	40.4627638	-104.5377931	0.87	
16747.00	89.850	358.800	6680.45	9438.44	9419.06	605.77	3267729.15	1412972.78	40.4630246	-104.5377969	0.13	
16841.00	89.850	359.050	6680.69	9532.15	9513.04	604.00	3267727.39	1413066.76	40.4632826	-104.5377995	0.27	
16936.00	89.690	359.580	6681.07	9626.90	9608.03	602.87	3267726.25	1413161.75	40.4635433	-104.5377999	0.58	
17030.00	89.600	359.350	6681.66	9720.67	9702.02	601.99	3267725.37	1413255.74	40.4638014	-104.5377994	0.26	LAST BH MWD SURVEY
17072.00‡	89.600	359.350	6681.95	9762.56	9744.02	601.51	3267724.90	1413297.73	40.4639166	-104.5377995	0.00	PROJECTION TO BIT



## REFERENCE WELLPATH IDENTIFICATION

Operator	NOBLE ENERGY, INC	Well	Reveille A34-757
Field	WELD COUNTY (NOBLE NAD 83 GRID)	API	0512350789
Facility	SEC.34-T06N-R64W	Wellbore	Reveille A34-757 AWB
Slot	SLOT#24 Reveille A34-757 (609'FSL & 1508'FWL,SEC.34)		

## HOLE & CASING SECTIONS - Ref Wellbore: Reveille A34-757 AWB Ref Wellpath: Reveille A34-757 AWP

String/Diameter	Start MD [ft]	End MD [ft]	Interval [ft]	Start TVD [ft]	End TVD [ft]	Start N/S [ft]	Start E/W [ft]	End N/S [ft]	End E/W [ft]
9.625in Casing Surface	30.00	1927.00	1897.00	30.00	1926.98	0.00	-0.02	1.37	-3.16

## REFERENCE WELLPATH IDENTIFICATION

## REFERENCE WELLPATH IDENTIFICATION

Operator	NOBLE ENERGY, INC	Well	Reveille A34-757
Field	WELD COUNTY (NOBLE NAD 83 GRID)	API	0512350789
Facility	SEC.34-T06N-R64W	Wellbore	Reveille A34-757 AWB
Slot	SLOT#24 Reveille A34-757 (609'FSL & 1508'FWL,SEC.34)		

## WELLPATH COMPOSITION - Ref Wellbore: Reveille A34-757 AWB Ref Wellpath: Reveille A34-757 AWP

Start MD [ft]	End MD [ft]	Positional Uncertainty Model	Log Name/Comment	Wellbore	Survey Date
0.00	1920.00	Gyrodatta 2015 - GC+DROP+COND	Gyrodatta 2015 - GC+DROP+COND 13-1/2" <82 - 1920>	Reveille A34-757 AWB	2/11/2021
1920.00	17072.00	OWSG MWD rev2 (MS+IFR1) NOBLE	OWSG MWD rev2 (MS+IFR1) NOBLE 8-1/2" <1987 - 17030>	Reveille A34-757 AWB	3/1/2021

## REFERENCE WELLPATH IDENTIFICATION

Operator	NOBLE ENERGY, INC	Well	Reveille A34-757
Field	WELD COUNTY (NOBLE NAD 83 GRID)	API	0512350789
Facility	SEC.34-T06N-R64W	Wellbore	Reveille A34-757 AWB
Slot	SLOT#24 Reveille A34-757 (609'FSL & 1508'FWL,SEC.34)		

## WELLPATH COMMENTS

MD [ft]	Inclination [°]	Azimuth [°]	TVD [ft]	Comment
82.00	0.210	270.740	82.00	FIRST GYRODATA SURVEY
1920.00	0.660	240.370	1919.98	LAST GYRODATA SURVEY
1987.00	0.130	214.670	1986.98	FIRST BH MWD SURVEY
17030.00	89.600	359.350	6681.66	LAST BH MWD SURVEY
17072.00	89.600	359.350	6681.95	PROJECTION TO BIT