



Gamma Ray

LWD MEMORY LOG

Scale: Company: Noble Energy

1:240 Well: Reveille A34-757

True Vertical Depth Field: Wattenberg

Depth Reference: County: Weld Country: United States

Driller's Depth State: Colorado

Status: Surface Location: 40° 26' 13.884" N Other Services:

Final Print Latitude: 104° 32' 25.224" W

API No: 05-123-50789-00 Longitude: Directional

Job ID: 110727948 SEC: 34 TWN: 6N RGE: 64W

Permanent Datum (P.D.): Mean Sea Level Elevation: 0.00 ft Elev. KB: N/A

Log Measured From: Rig Floor Above P.D.: 4662.00 ft Elev. DF: 4662.00 ft

Dates Interval Magnetic Field Reference

From: 2021-02-26 Drilled (ft) Logged (ft) Azi Reference North: Grid Dip Angle: (deg) 66.81
To: 2021-02-28 Top: 1937.00 Top: 1937.00 Total Magnetic Field Strength: (nT) 51962
Spud: 2021-02-04 Bottom: 170720.00 Bottom: 17059.00 Mag to Reference North Correction: (deg) 7.12

Borehole Record

Casing Record

Hole Size (in)	From (ft)	To (ft)	Size (in)	Weight (lb/ft)	From (ft)	To (ft)
13.500	30.00	1937.00	9.625	36.00	30.00	1927.00
8.500	1937.00	17072.00				

Mud Record

Deviation Record

Type	From (ft)	To (ft)	Hole Size (in)	Interval (ft)	Inc Az (Start)	Inc Az (End)
Oil Based Mud	1937.00	17072.00	8.500	15135.00	0.66 240.37	89.60 359.35

Acquisition System Software Version

Other

Cadence	RT 5.8	Rig: H&P 517
Plot Studio	5.8.9018.1	Contractor: Helmerich & Payne Drilling Co
		District: RMA
		Unit: D&E

(C) 2020 Baker Hughes Company - All rights reserved. Baker Hughes and its affiliates provides this information on an "as is" basis for general information purposes and believes it to be accurate as of the date of publication. Baker Hughes does not make any representation as to the accuracy or completeness of the information and makes no warranties of any kind, specific, implied or oral, to the fullest extent permissible by law, including those of merchantability and fitness for a particular purpose or use. Baker Hughes hereby disclaims any and all liability for any direct, indirect, consequential or special damages, claims for lost profits, or third party claims arising from the use of the information, whether a claim is asserted in contract, tort, or otherwise. The Baker Hughes logo is a trademark of Baker Hughes Company.

Log Run Summary

Run No	Bit Run No.	Bit Size (in)	Bit Type	Bit Gauge Length (in)	Assembly Type	Logged Interval		Bit Depth Interval		Date / Time		Circ. Hours (h)
						Top (ft)	Bottom (ft)	From (ft)	To (ft)	Start Logging	End Logging	
1	1	8.500	PDC	3.00	AutoTrak Curve	1937.00	17059.00	1937.00	17072.00	2021-02-26 07:15	2021-02-28 12:49	49.73

Crew

Name	Arrive	Depart	Name	Arrive	Depart	Name	Arrive	Depart
------	--------	--------	------	--------	--------	------	--------	--------

	Wellsite	Wellsite		Wellsite	Wellsite		Wellsite	Wellsite
Tien Bui	2021-02-25	2021-03-01						

Mud Properties Record

Date / Time	Run No.	Depth (ft)	Mud Type	Density (ppg)	Viscosity (cP)	pH	Fluid Loss (cm3)	Oil / Water	Source	Total Chlorides (ppm)	K+ (%)
2021-02-25 12:45	1	1937.00	Oil Based Mud	9.2	10	N/A	19.5	79.5/20.5	Active Pit	27000	0.00
2021-02-28 22:37	1	13600.00	Oil Based Mud	9.7	17	N/A	18.4	78.9/21.1	Active Pit	29000	0.00

Equipment and Service Data

Run No.	Tool	Serial Number	Measurement	Sensor Offset (ft)	Bit Offset (ft)	Max O.D. (in)	Min I.D. (in)
1	AutoTrak Curve Steering Unit	14316019	Near Bit VSS	5.93	6.87	7.000	4.330
1	AutoTrak Curve Steering Unit	14316019	Near Bit Inclination	5.93	6.87	7.000	4.330
1	AutoTrak Curve MWD	14281551	Gamma (single)	2.76	13.04	7.000	3.250
1	AutoTrak Curve MWD	14281551	Directional (mag)	12.27	22.55	7.000	3.250

Service and Tool Mnemonics

Mnemonic	Name	Description
ATC SU	AutoTrak Curve SU	Auto Trak Curve Steering Unit
ATC MWD	AutoTrak Curve MWD	Auto Trak Curve MWD
ATC LCPM	AutoTrak Curve LCPM	Auto Trak Curve LCPM

Comments

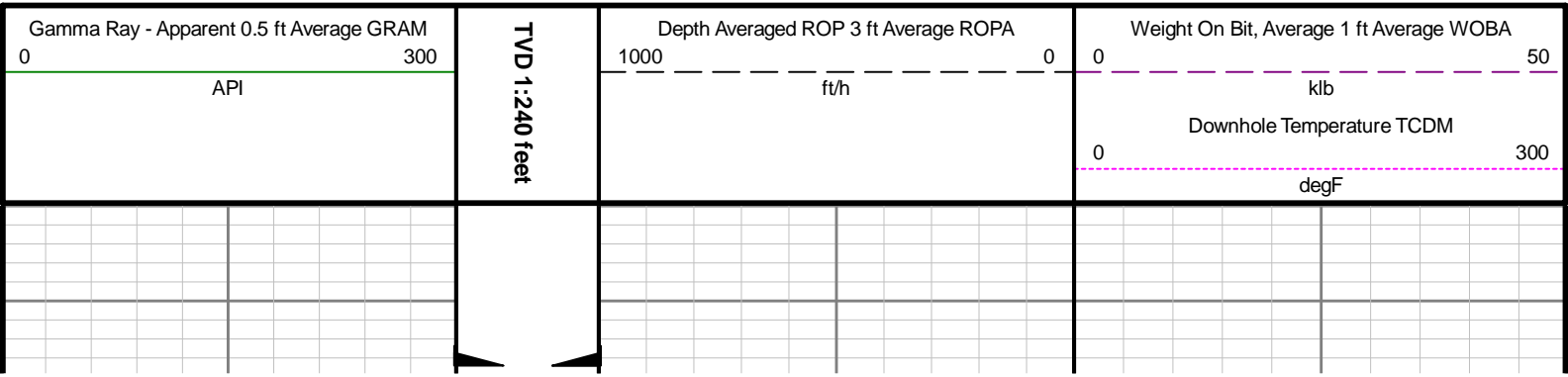
1	Depth measurements were obtained from a depth control system not supplied or operated by Baker Hughes. Due to lack of control by Baker Hughes logging engineers, depth calibrations and measurements could not be independently verified.
2	Baker Hughes LWD Run 1 utilized 6 ¾ inch NaviGamma service (Gamma Ray and Directional) behind a 8 1/2 inch bit and rotary steerable assembly from 1937 to 17072 feet MD (1937 to 6682 feet TVD).
3	The Gamma Ray Apparent (GRAM) data is presented 0 to 300 API, per the customer's request.
4	Several gaps appear in the log due to drilling ahead before the assembly had time to properly power on.

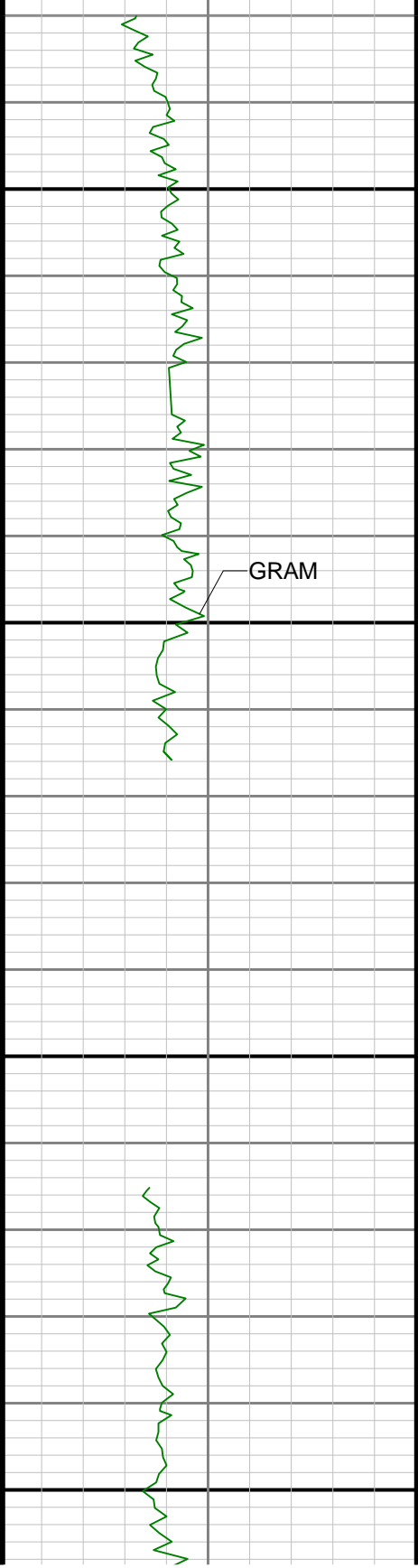
Remarks

Number	Depth (ft)	Hole Section (in)	Run No.	Remark
--------	---------------	-------------------------	------------	--------

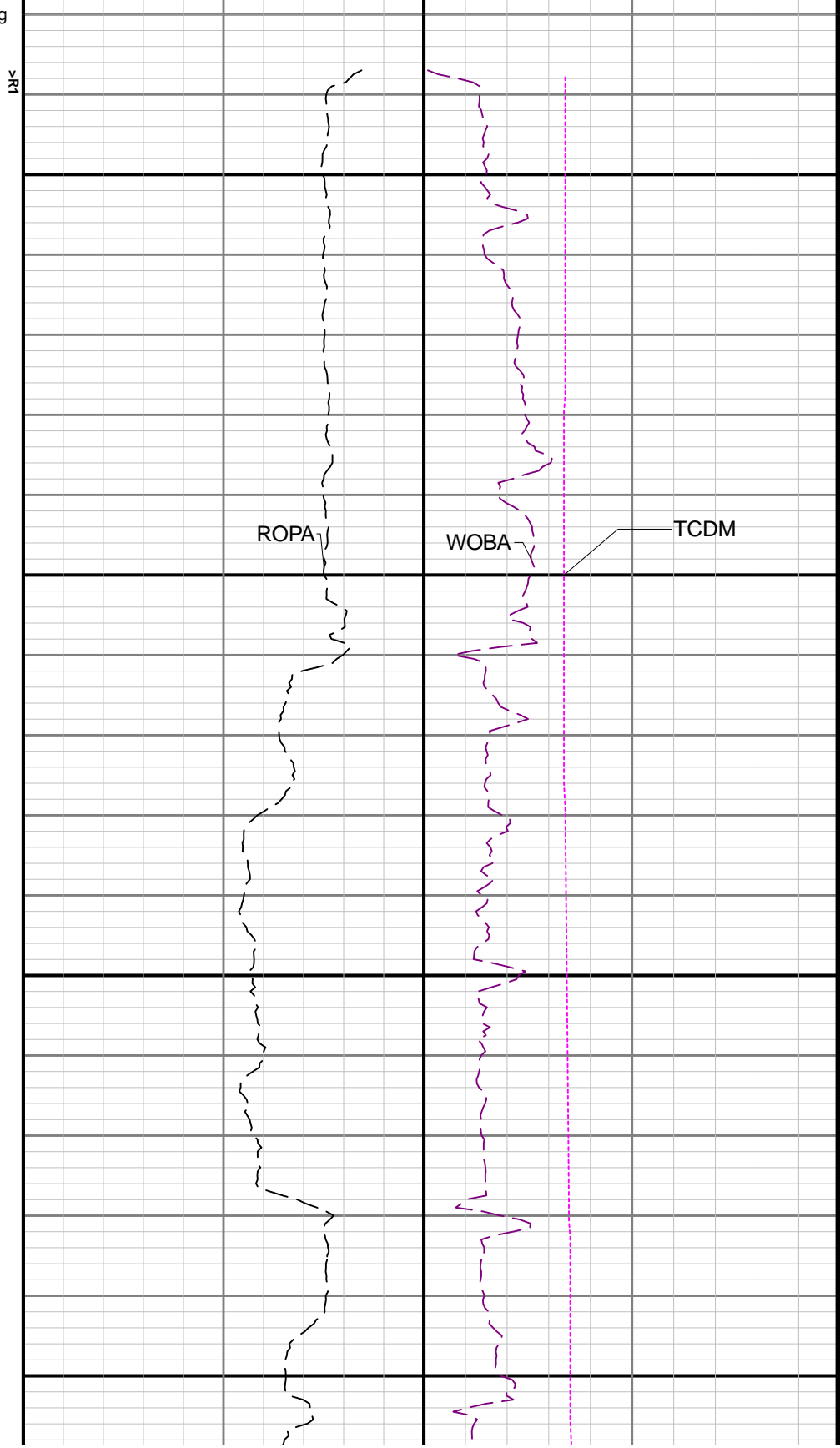
Curve Mnemonics

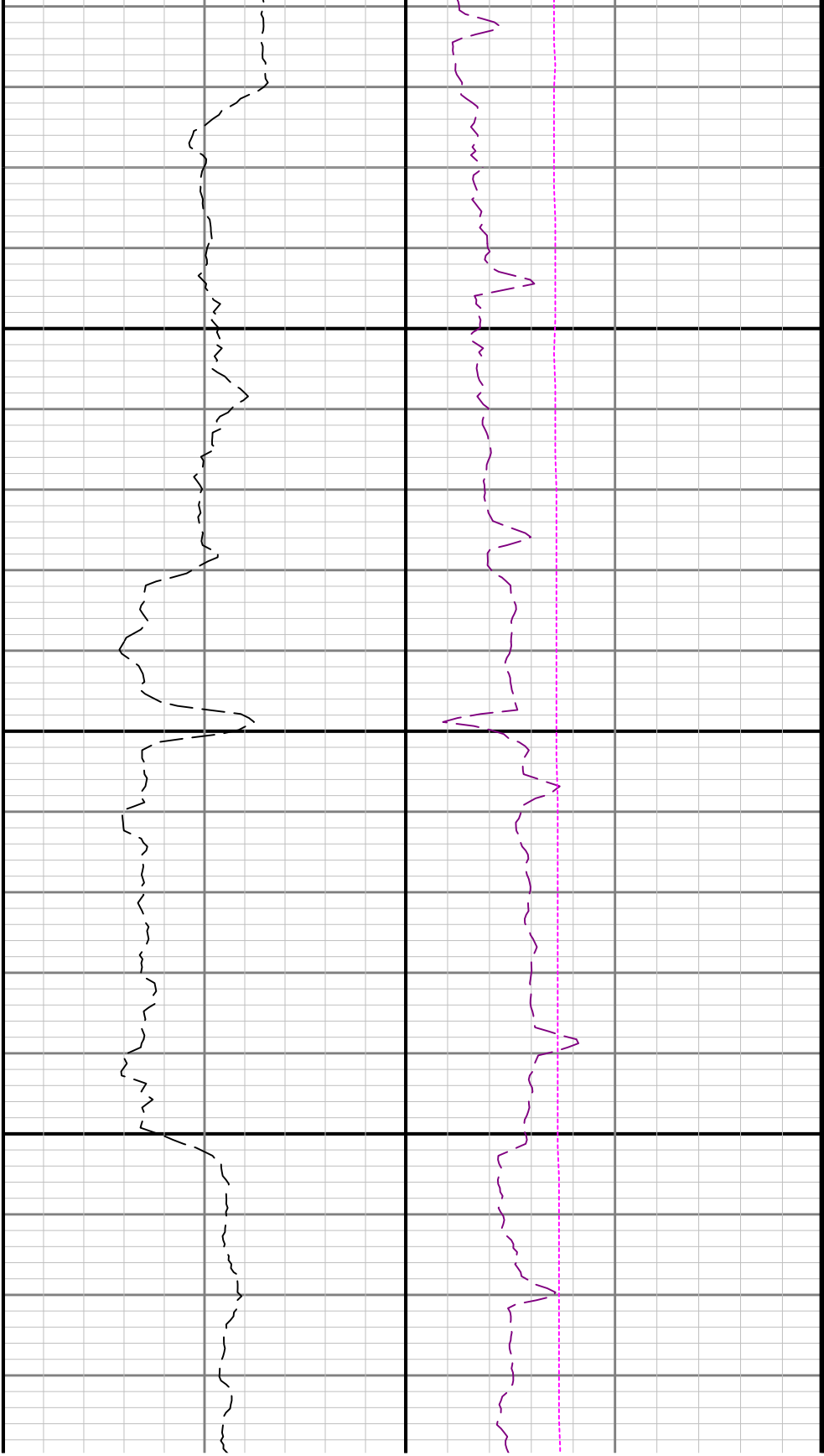
Presented Curves	Description	Units
ROPA	Depth Averaged ROP 3 ft Average	ft/h
WOBA	Weight on Bit - Average 1 ft Average	klb
GRAM	Gamma Ray - Apparent - Memory 0.5 ft Average	API
TCDM	Directional Real-Time Survey Temperature	degF



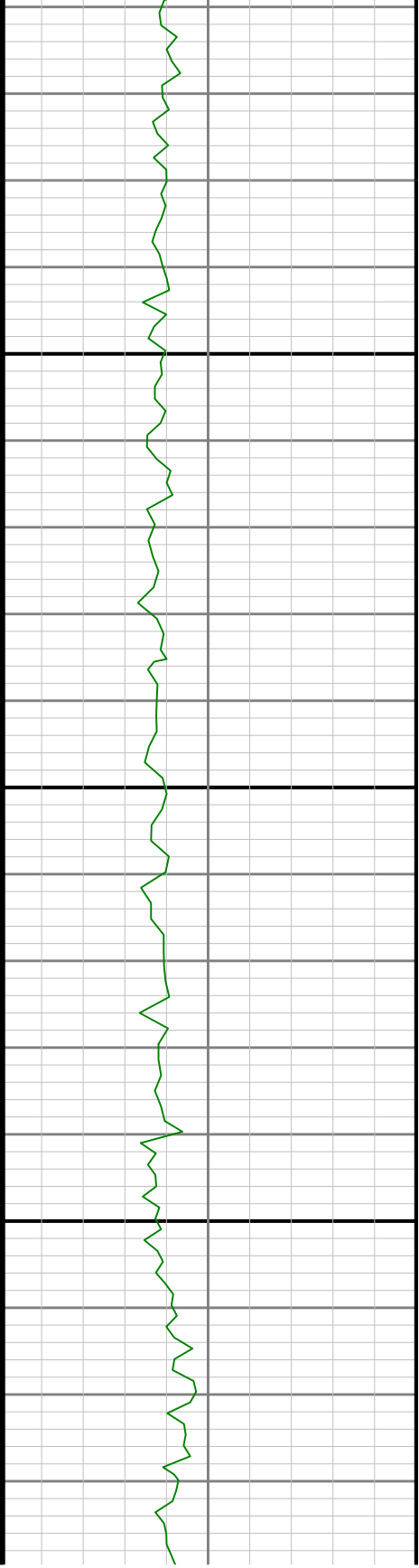


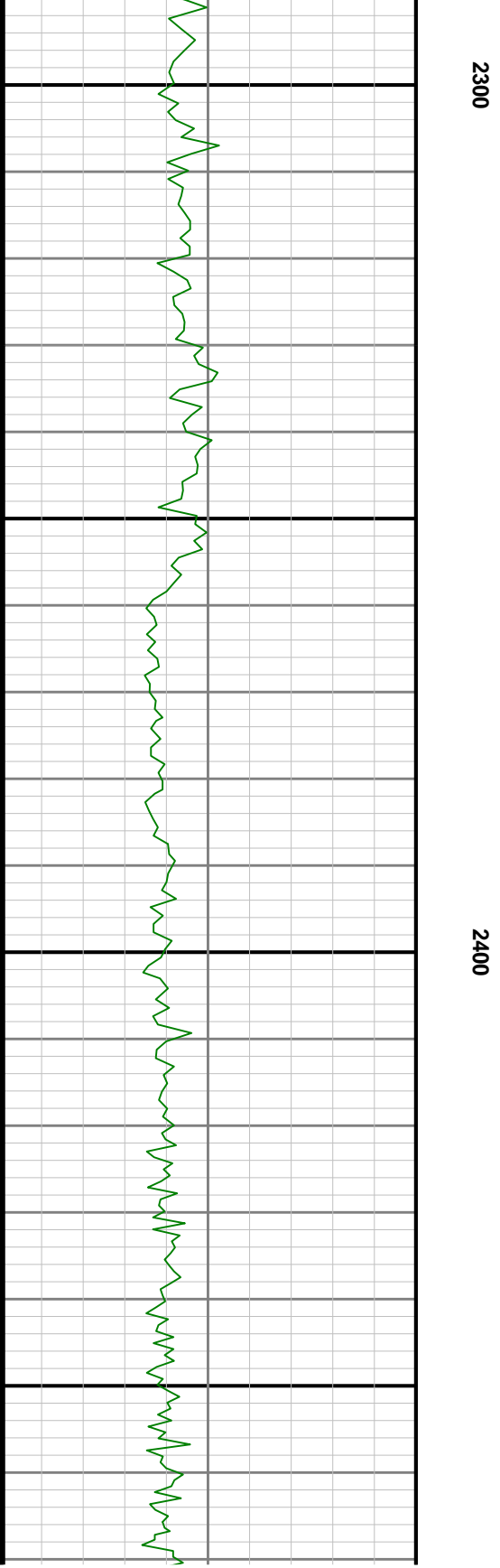
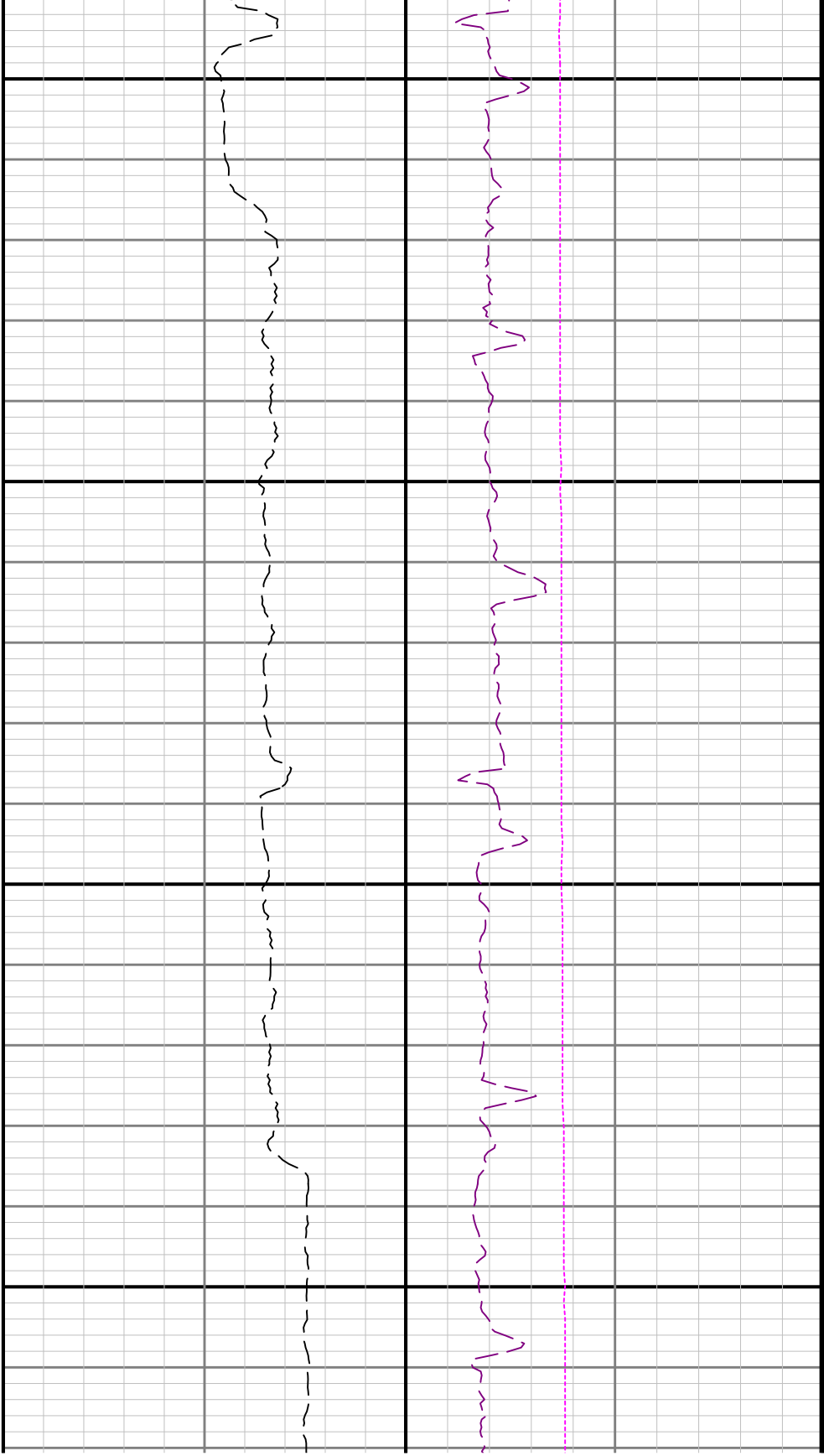
9 5/8" Casing

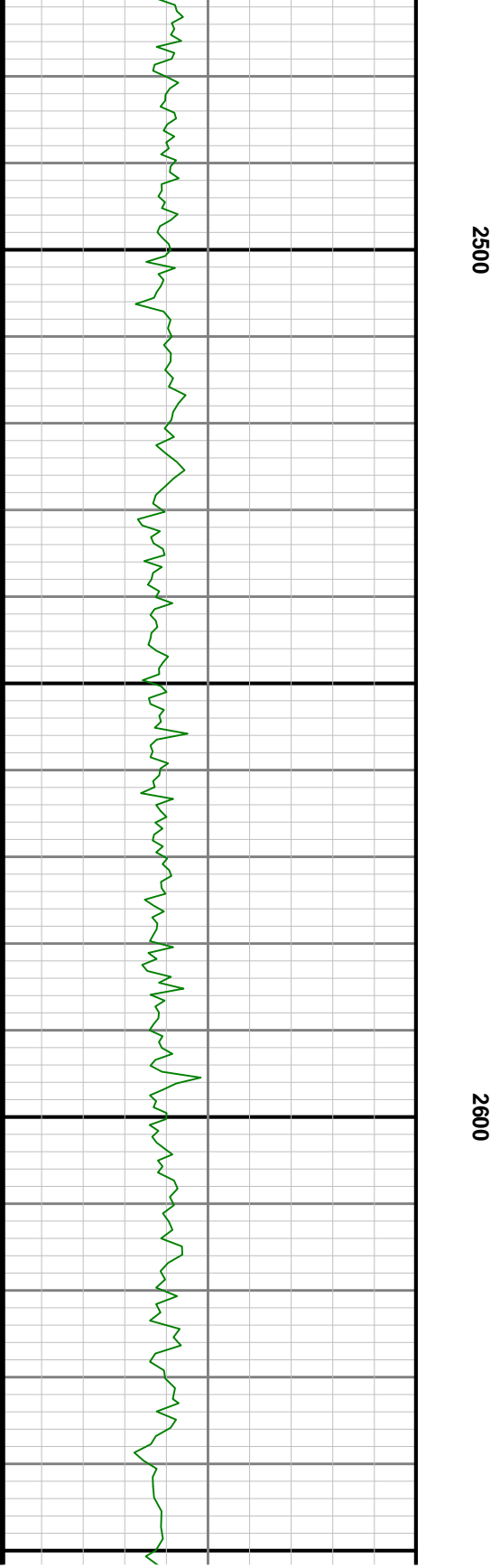
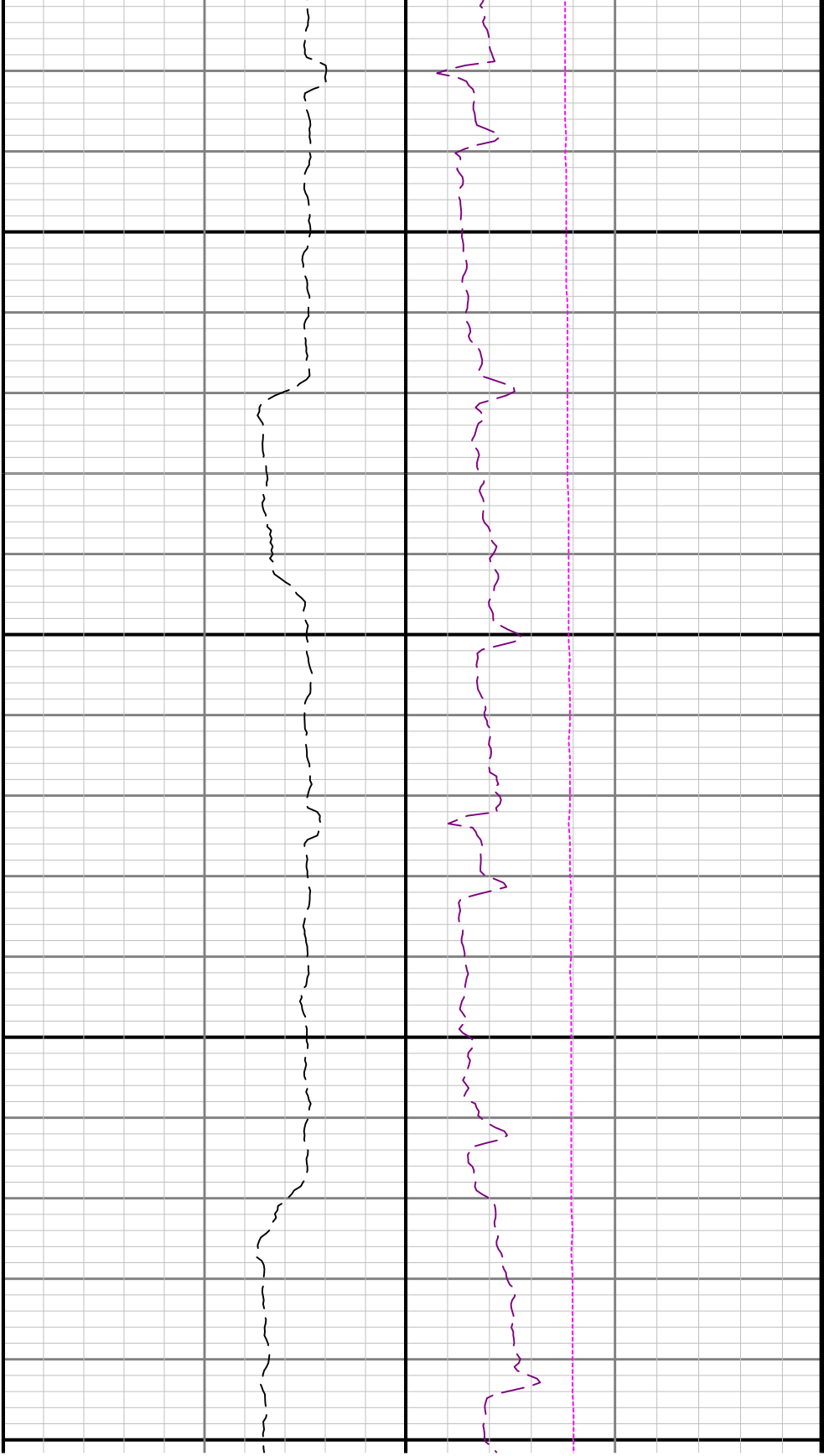


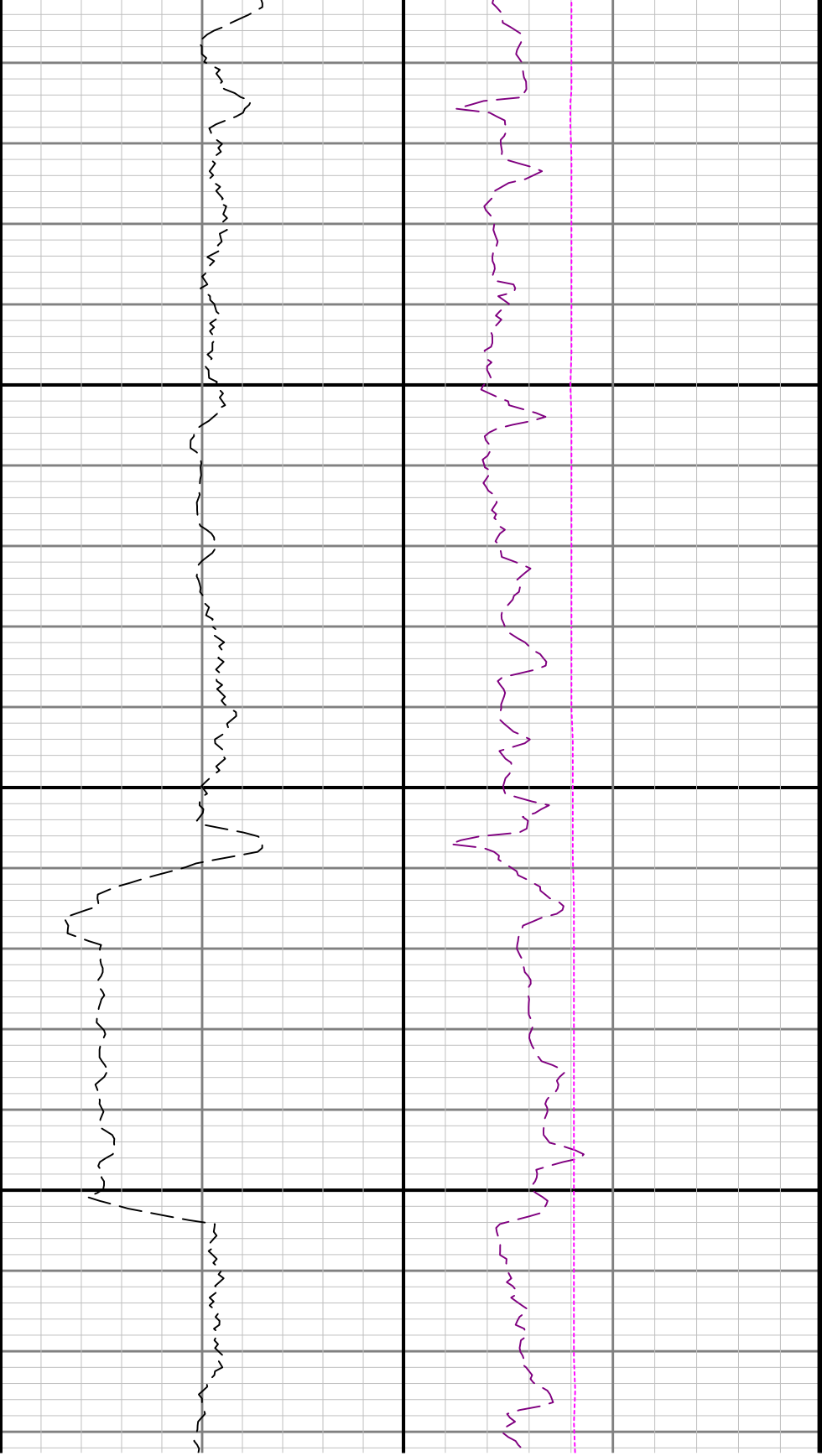


2200



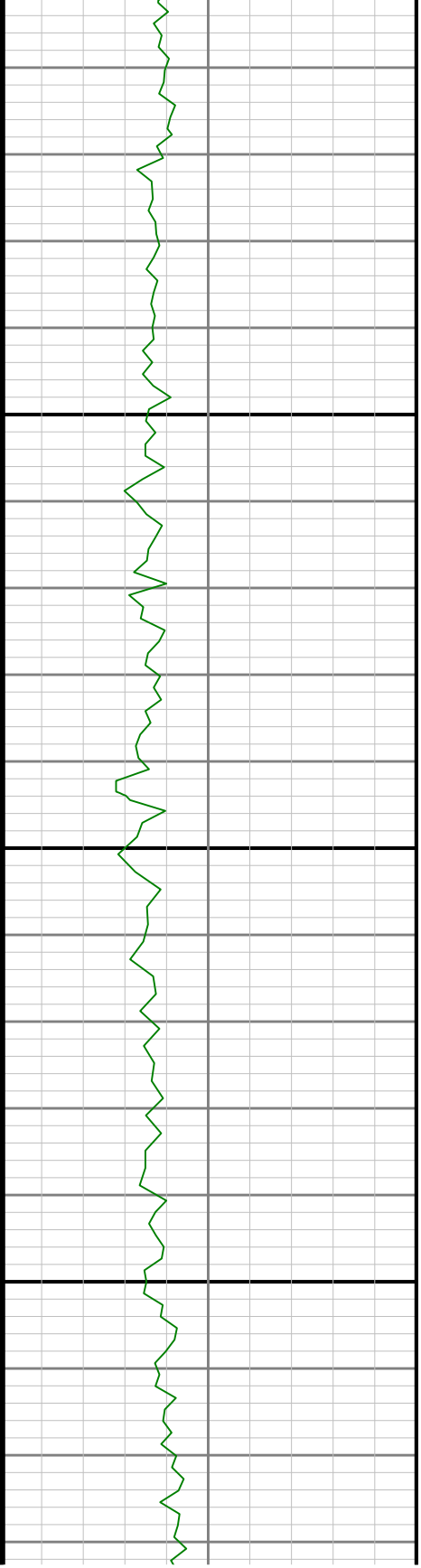


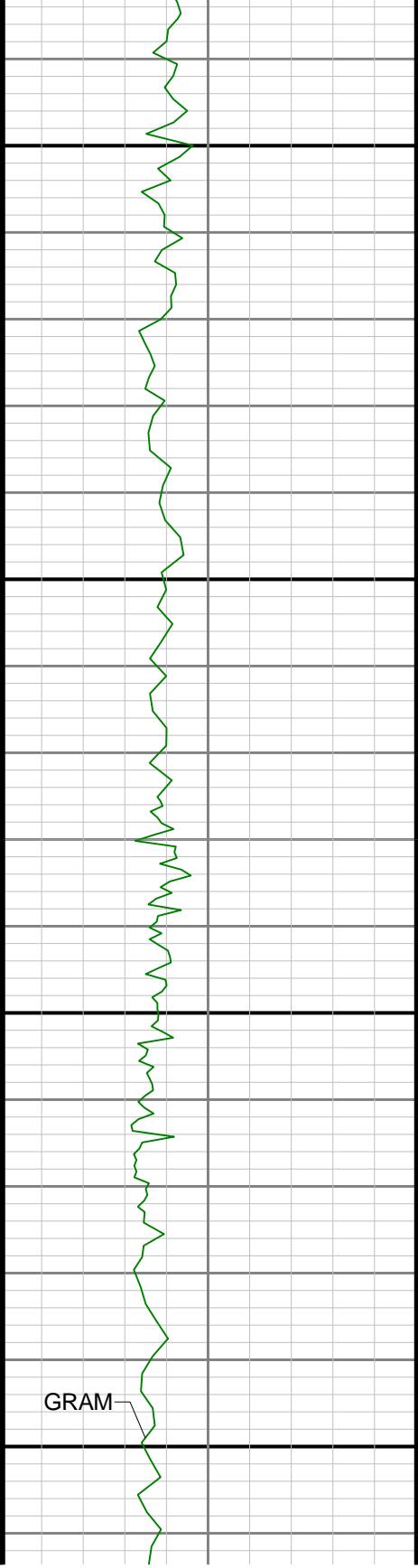




2700

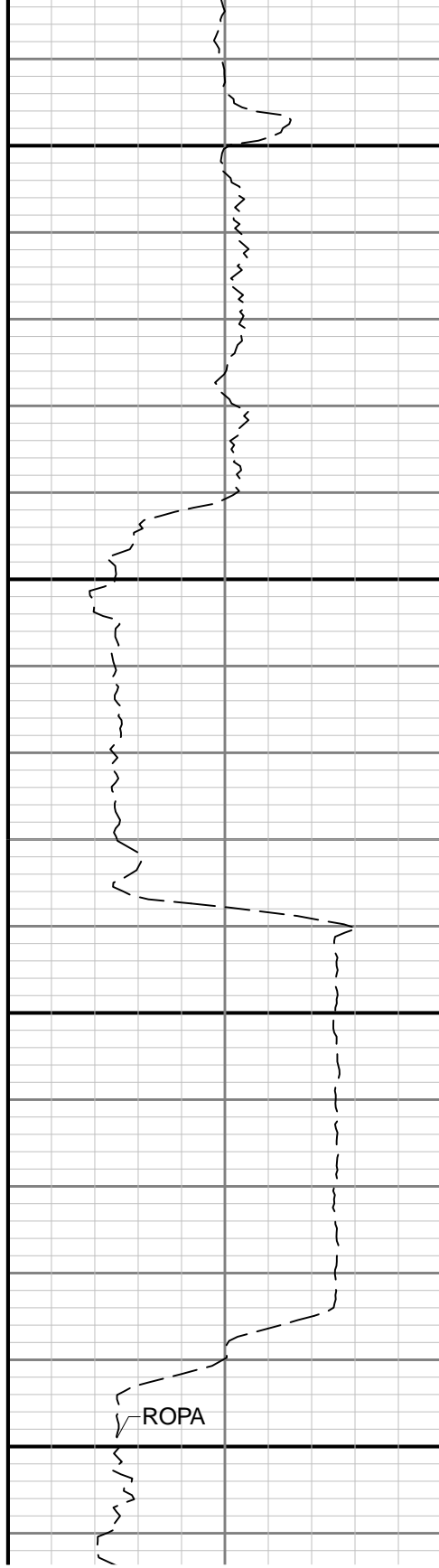
2800



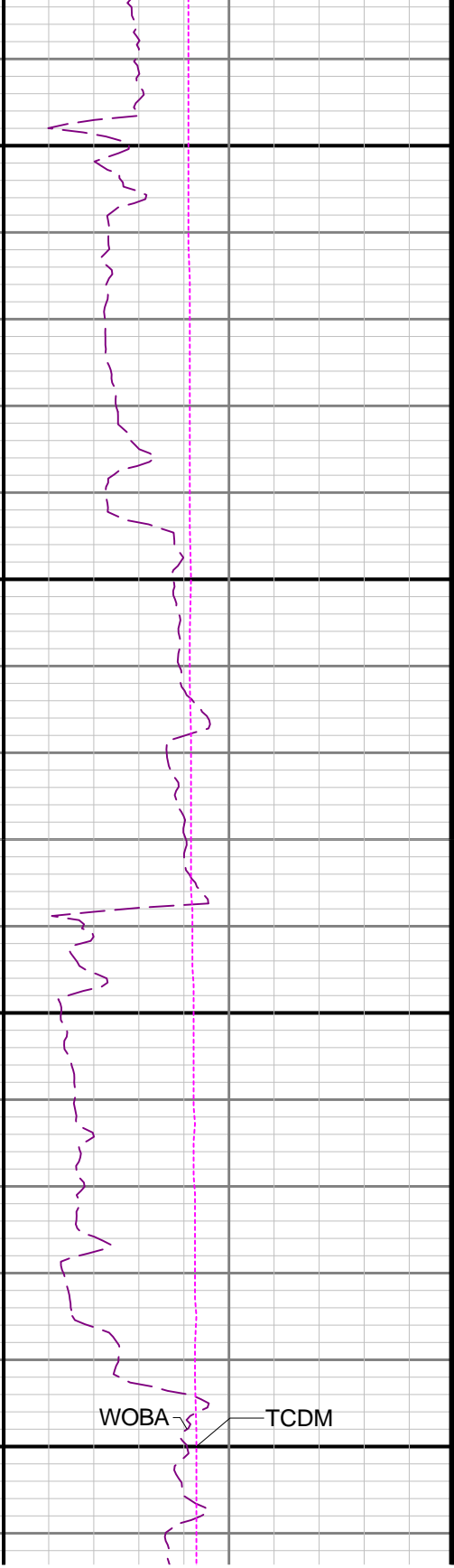


2900

3000

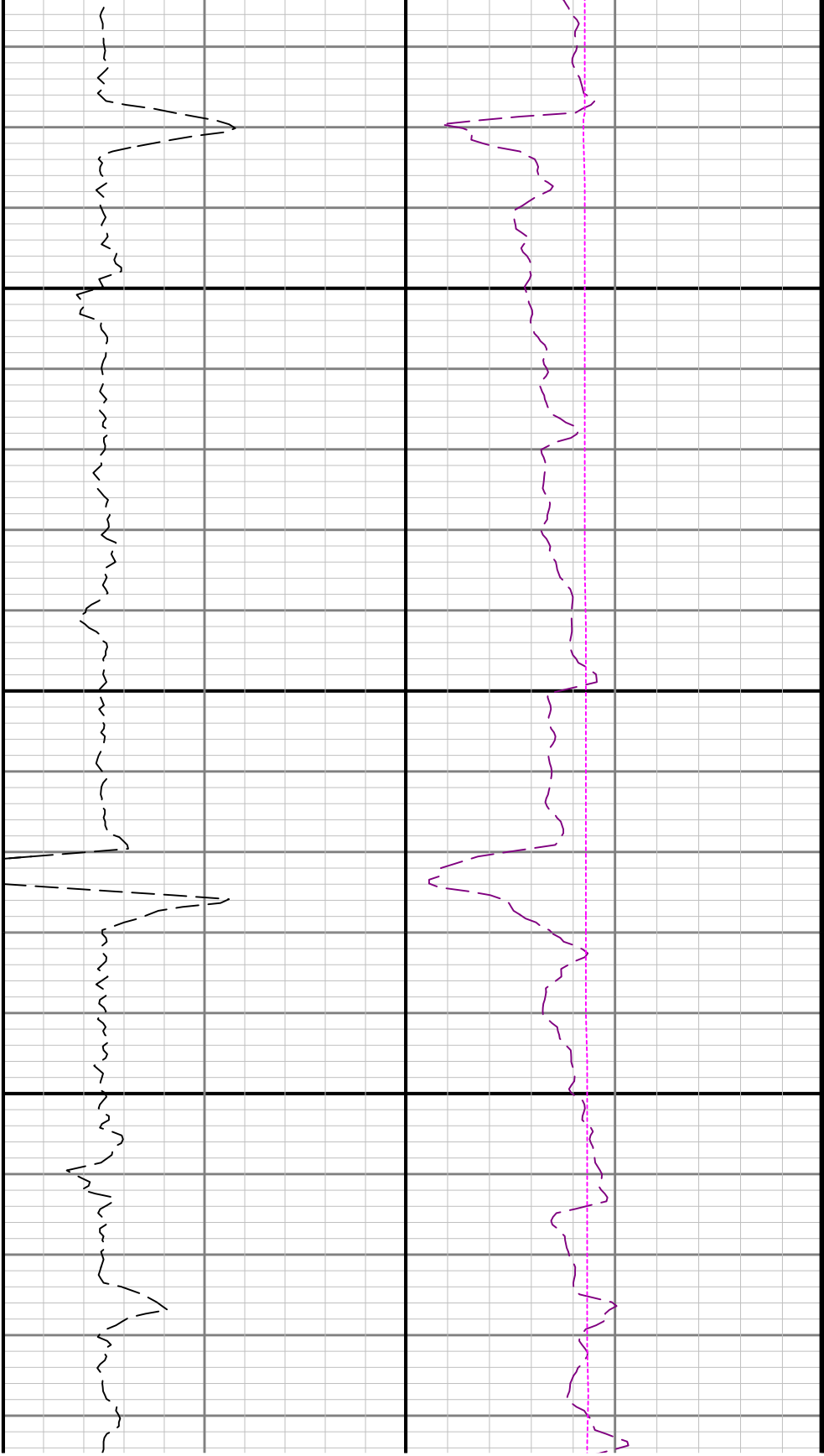


ROPA

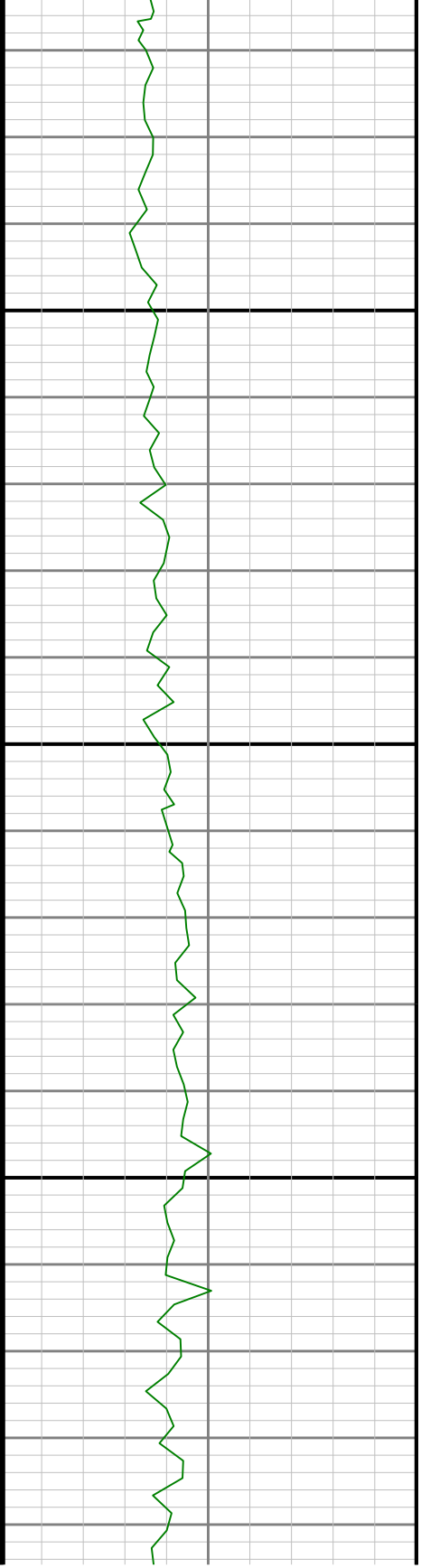


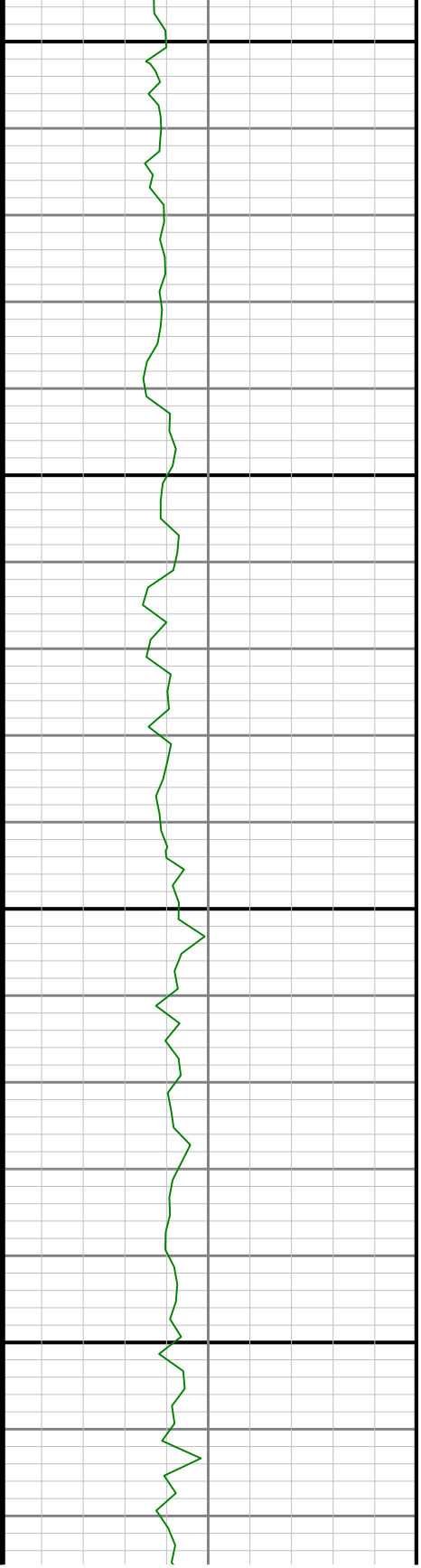
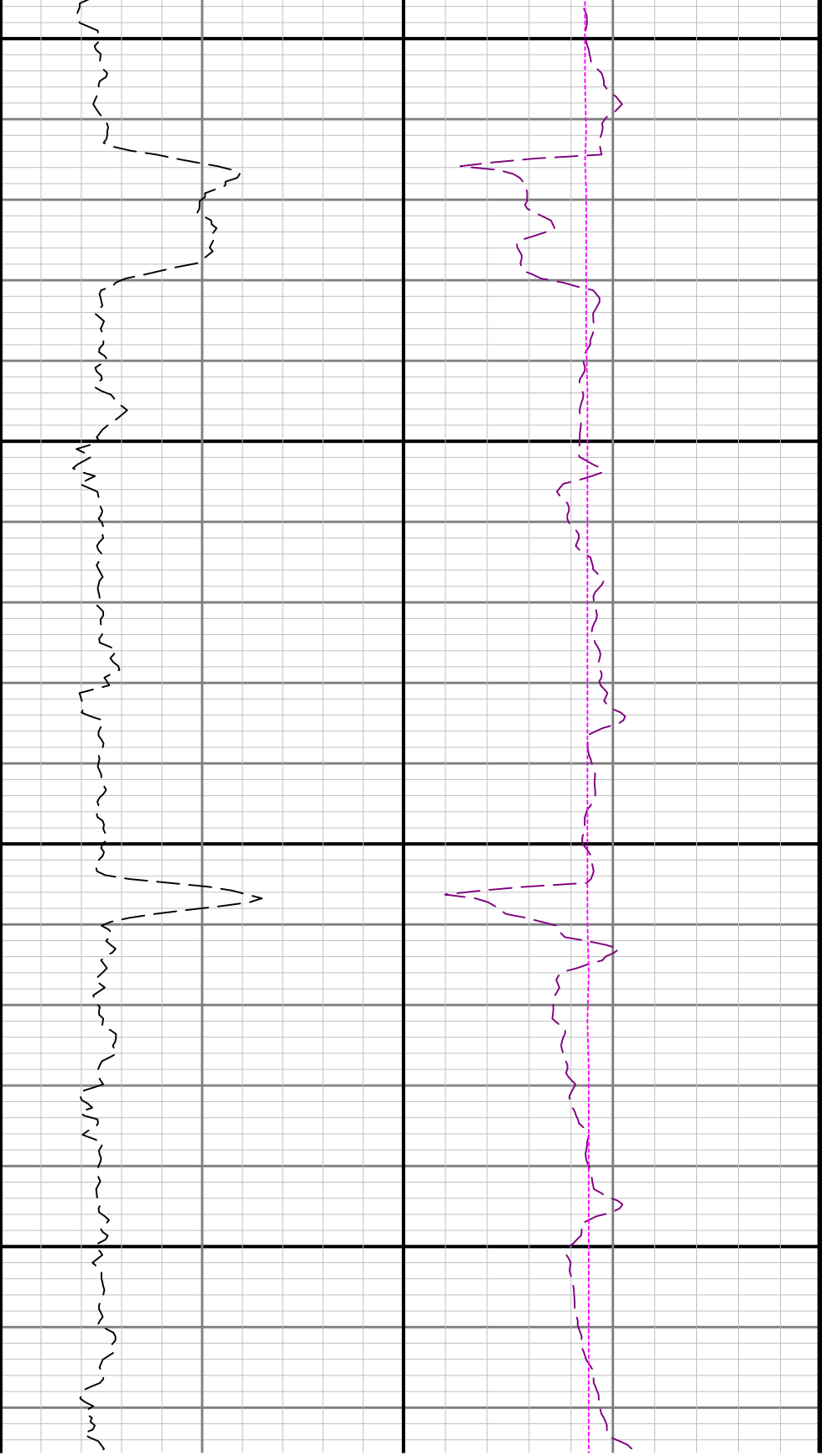
WOBA

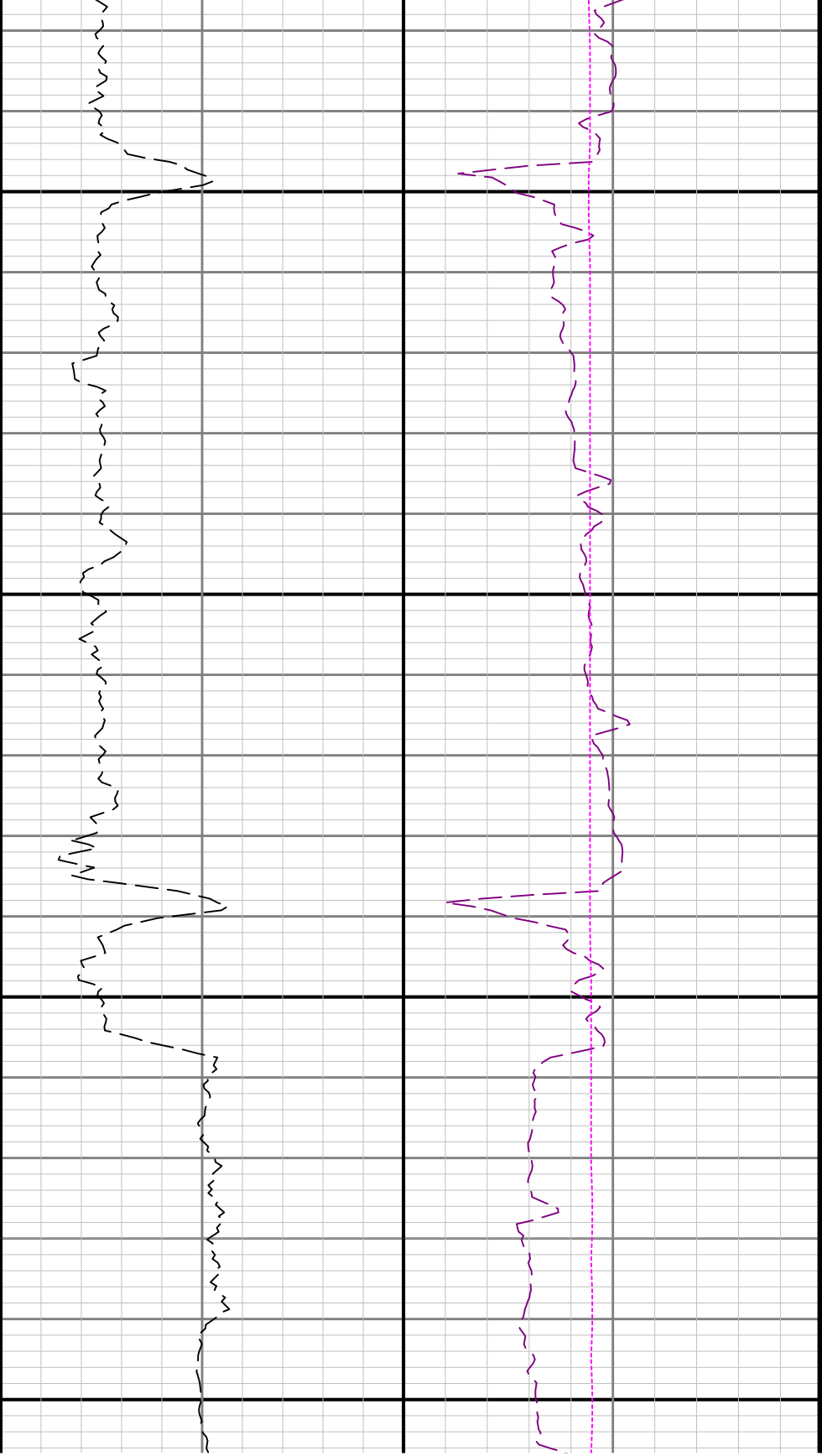
TCDM



3100

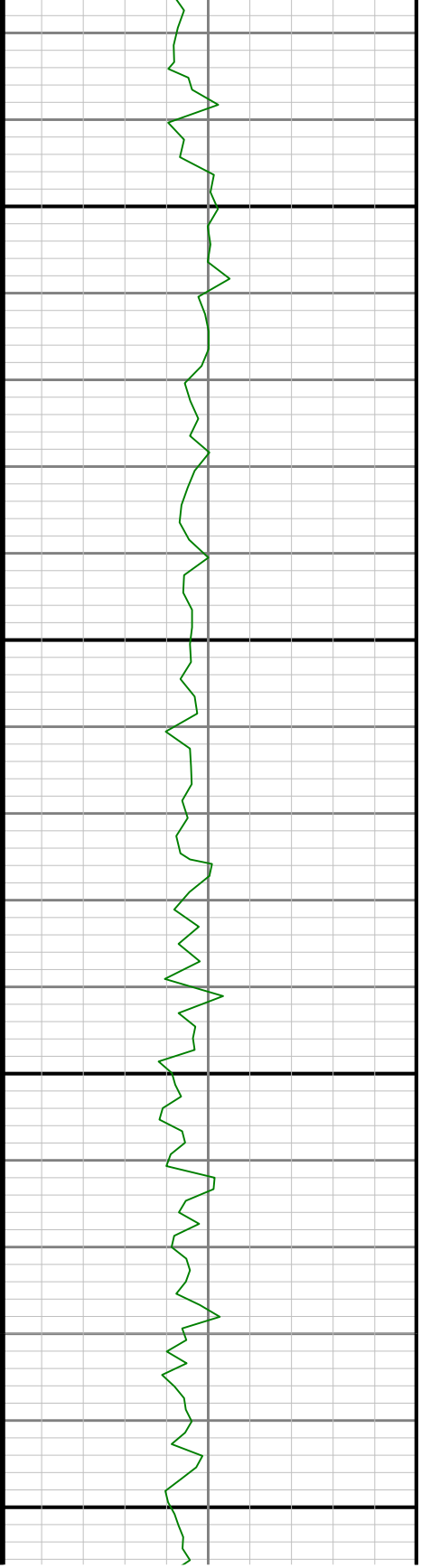


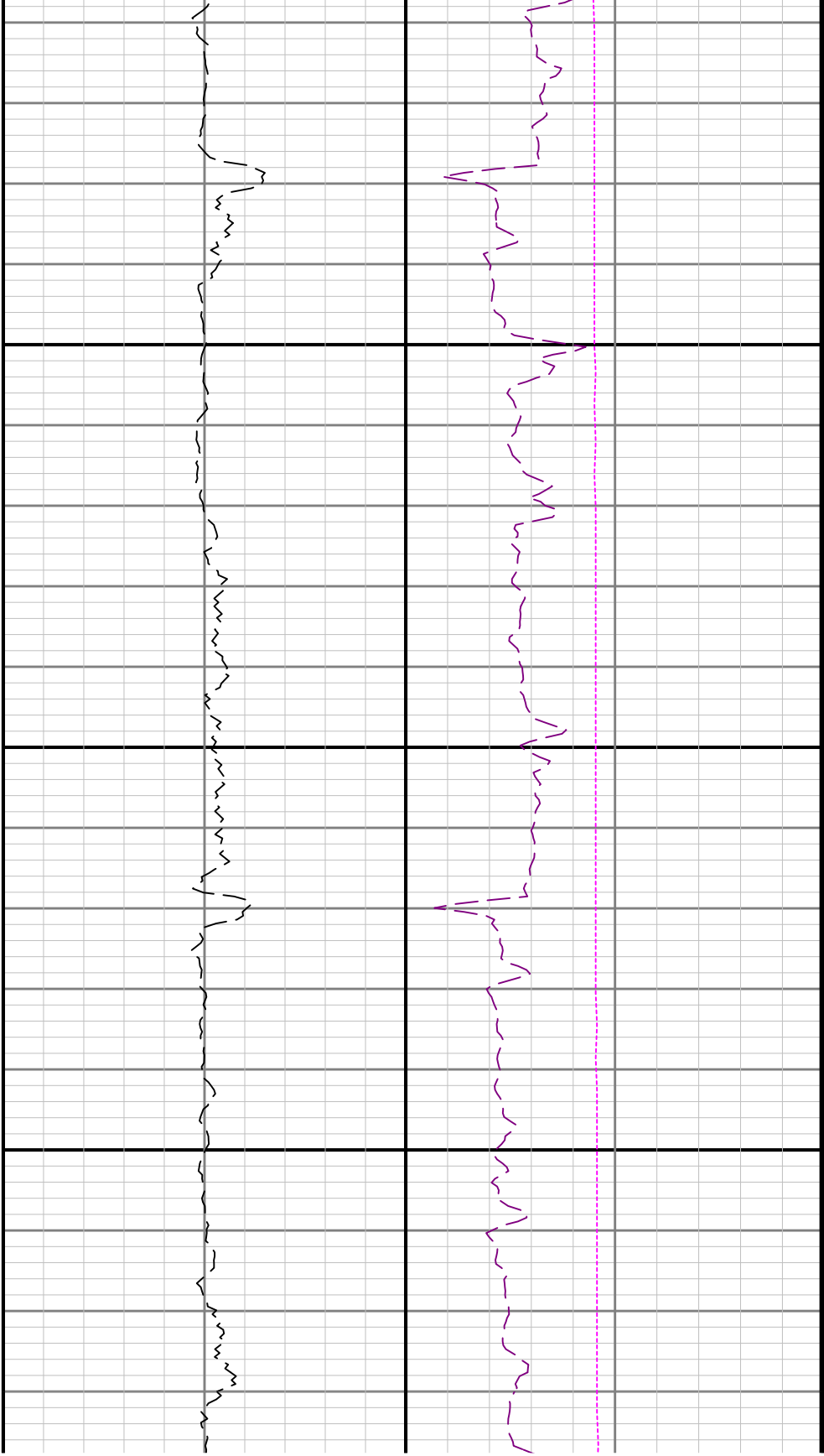




3400

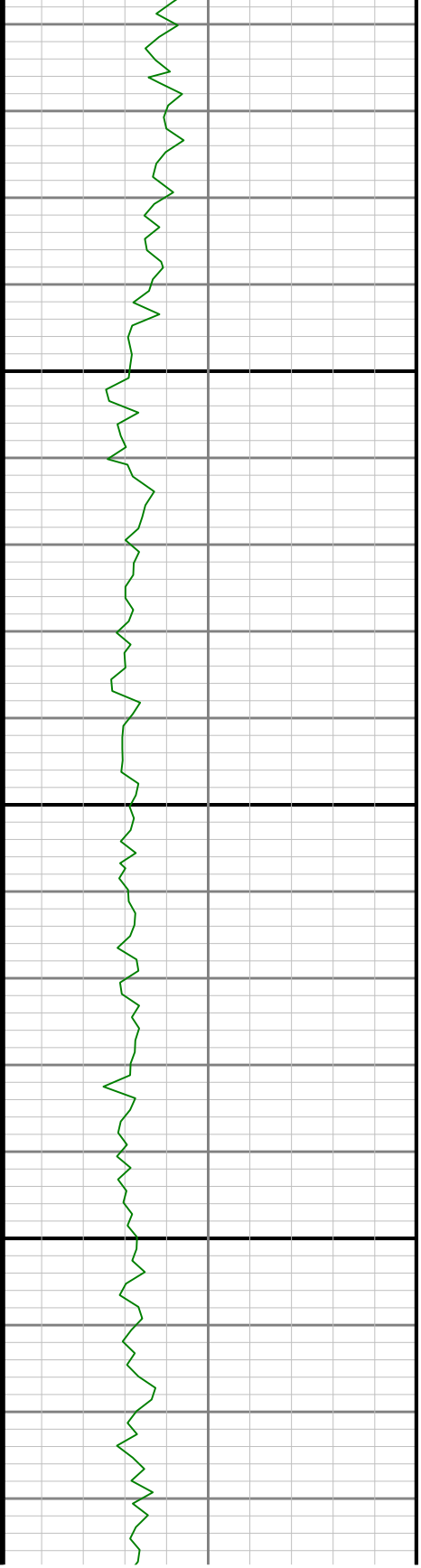
3500

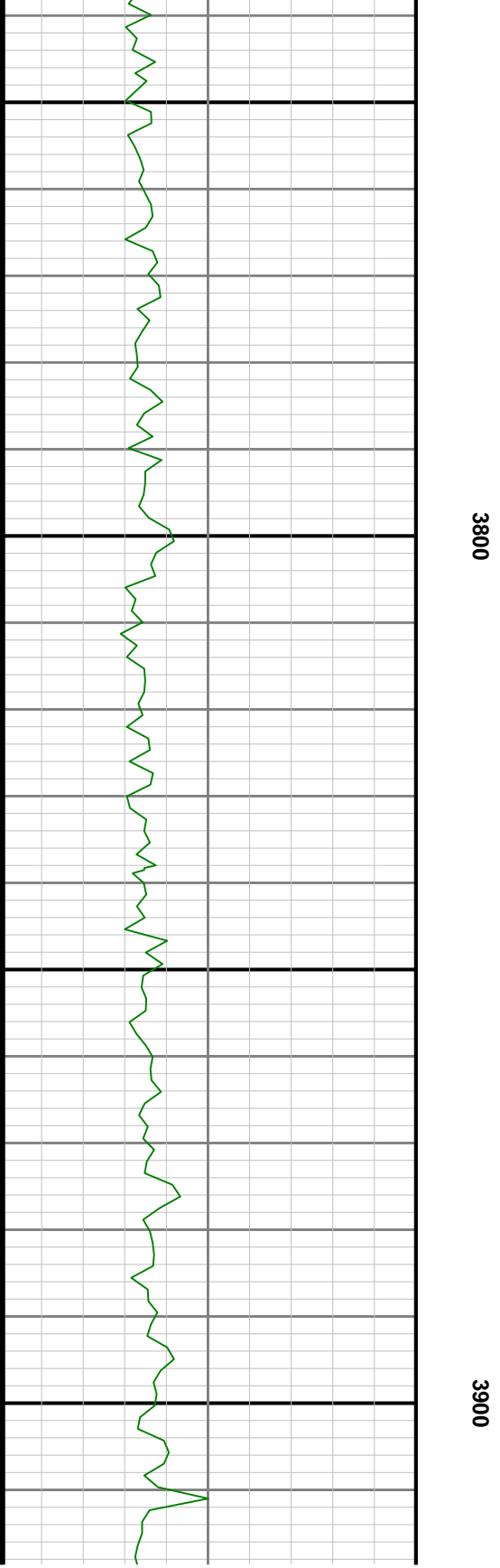


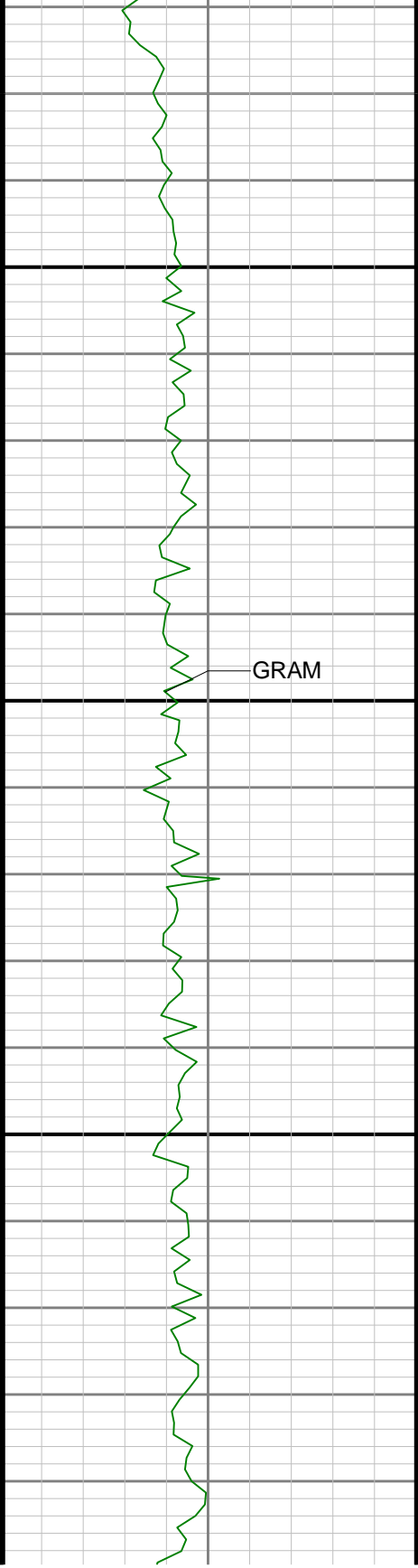


3600

3700

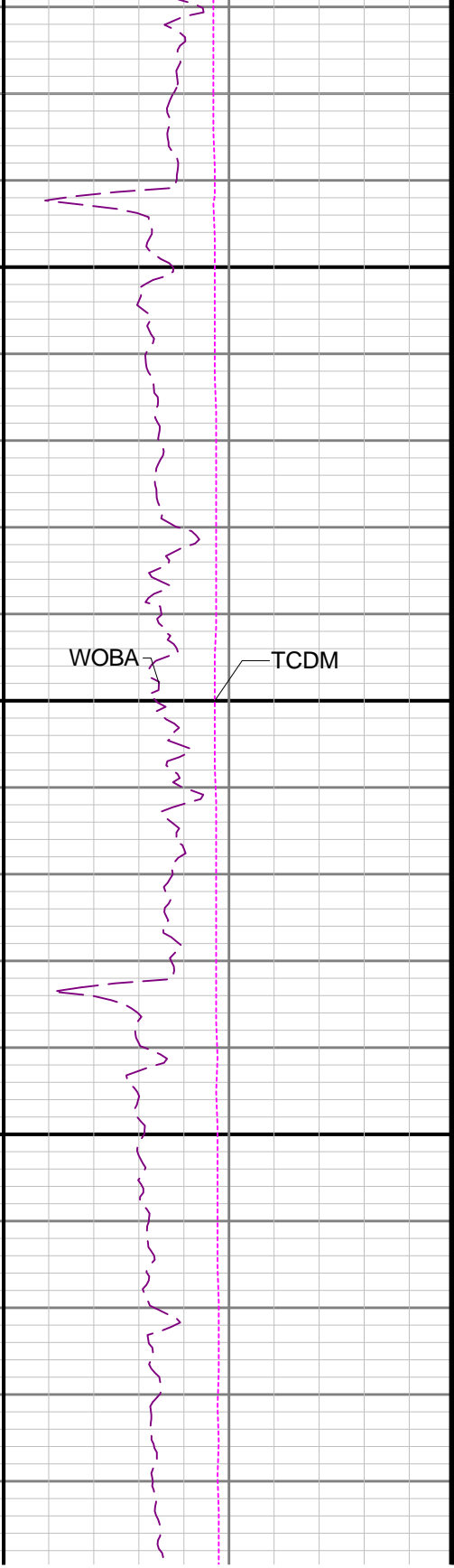
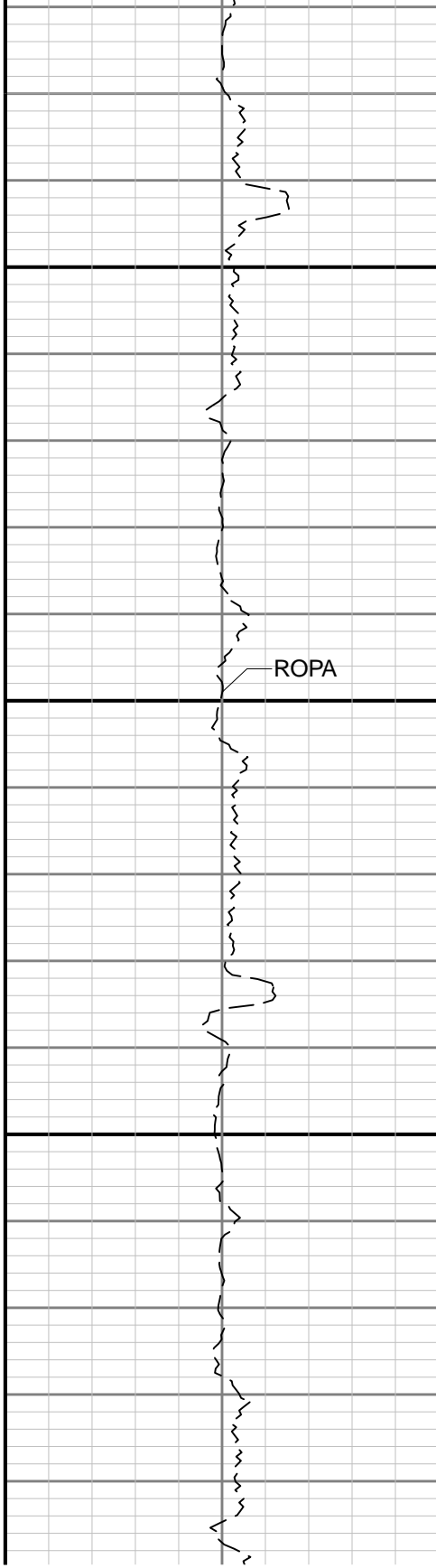


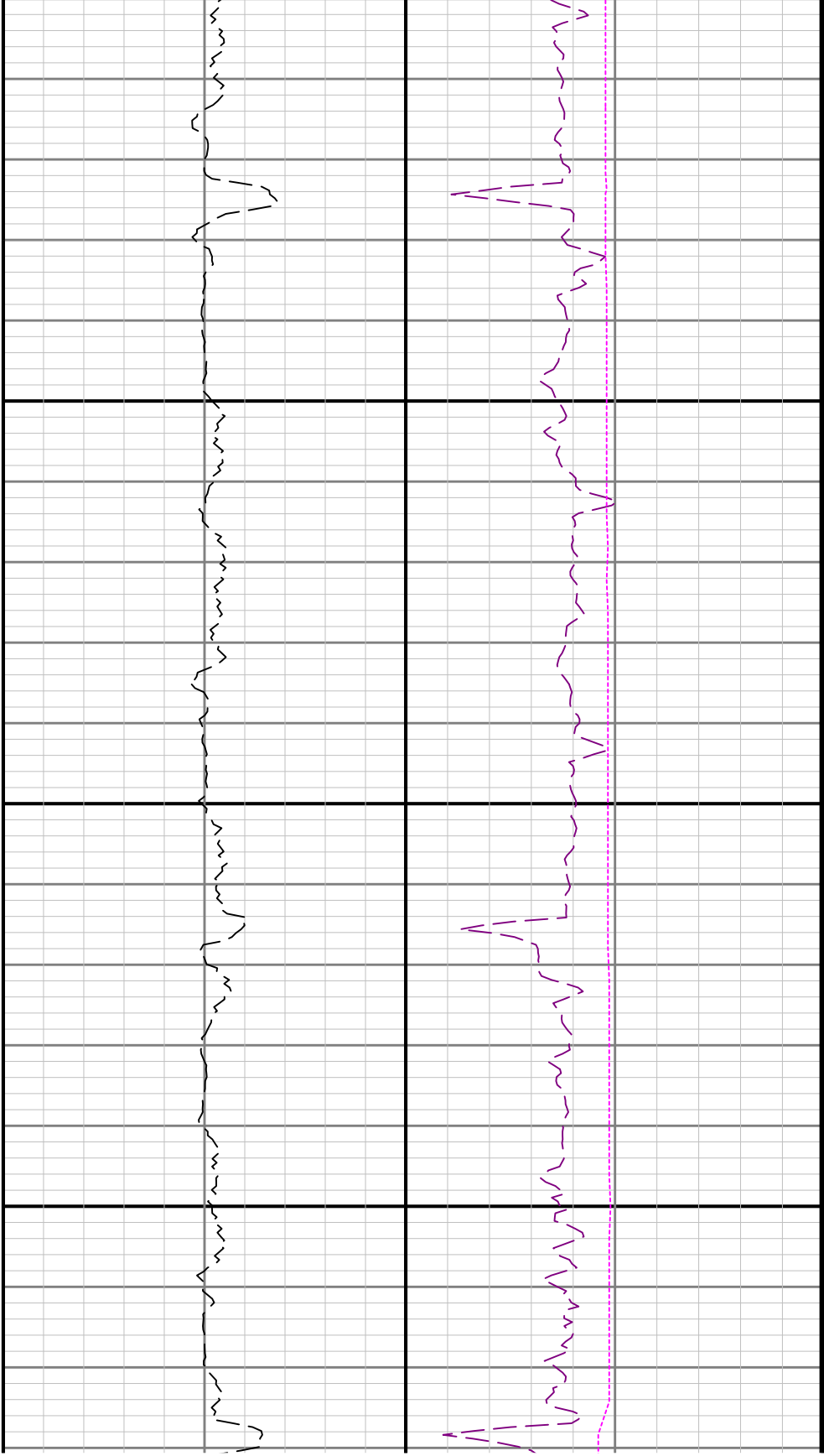




4000

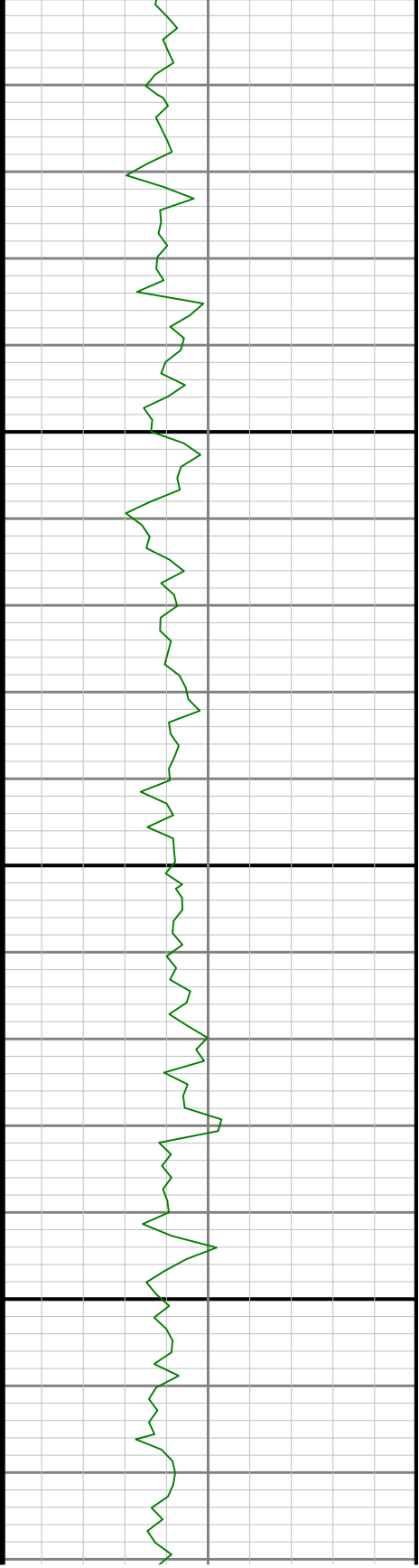
41





00

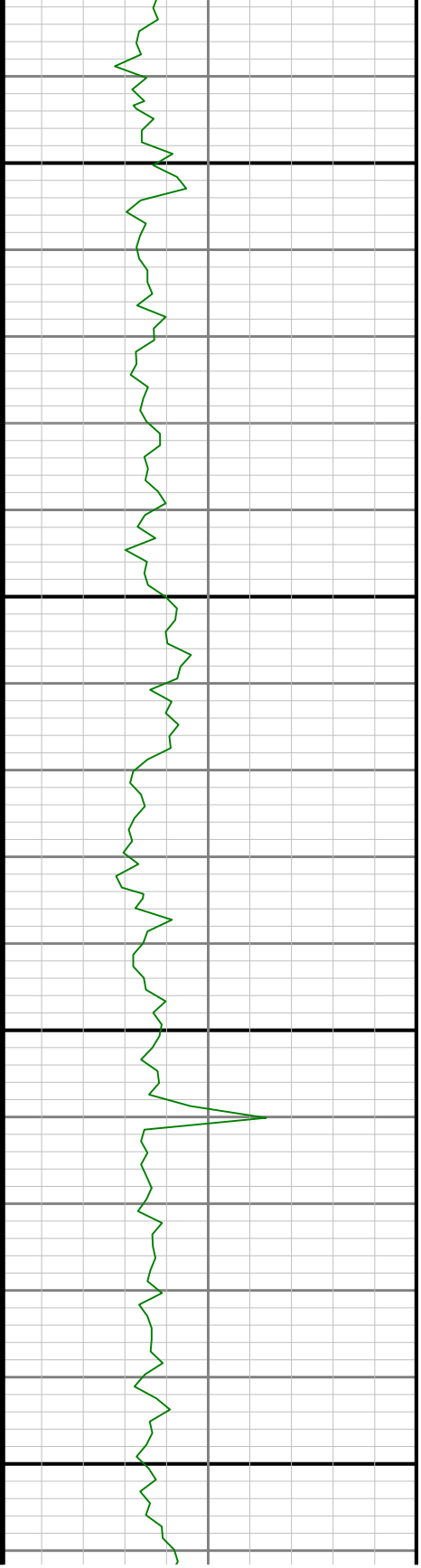
4200

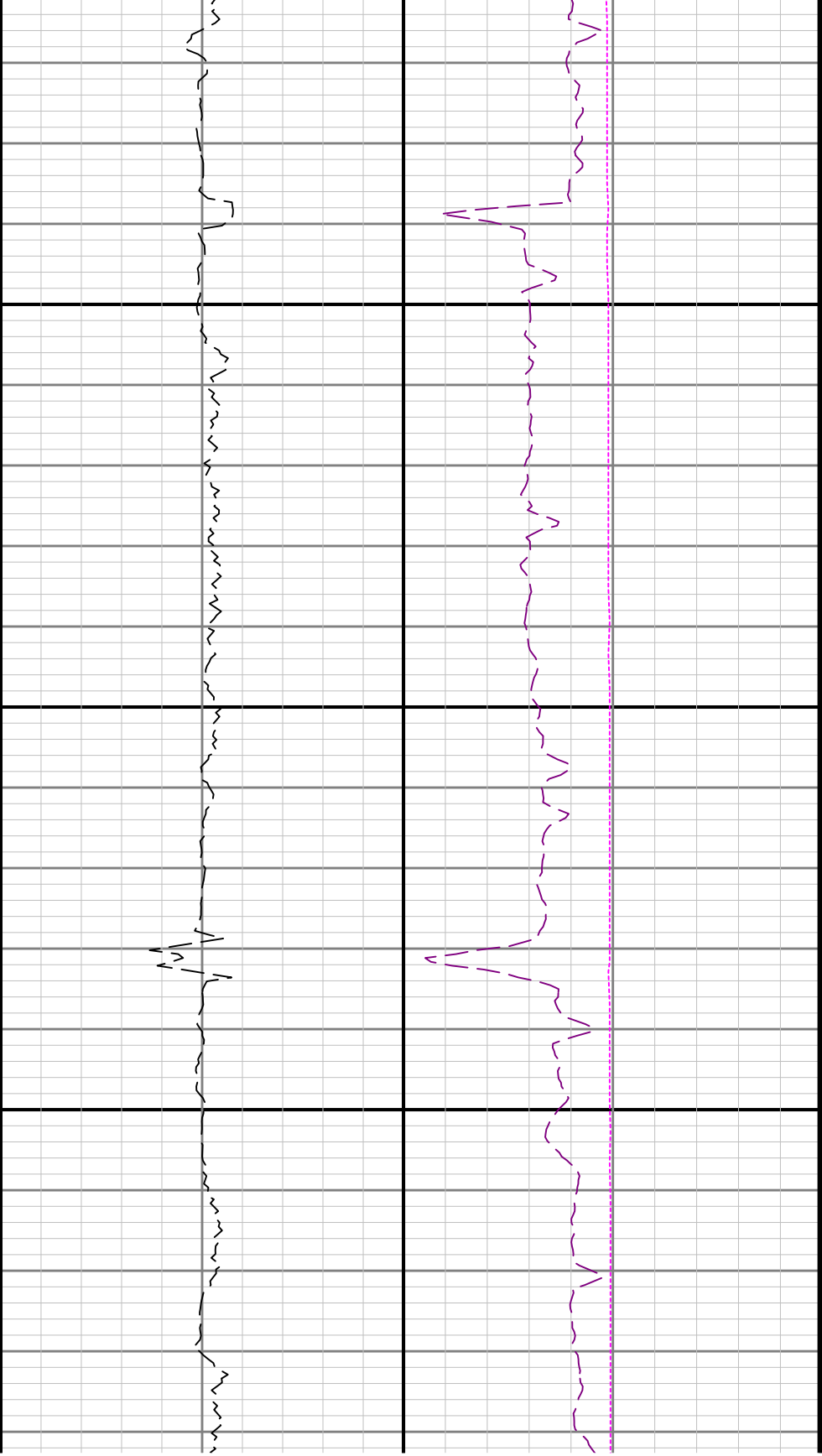




4300

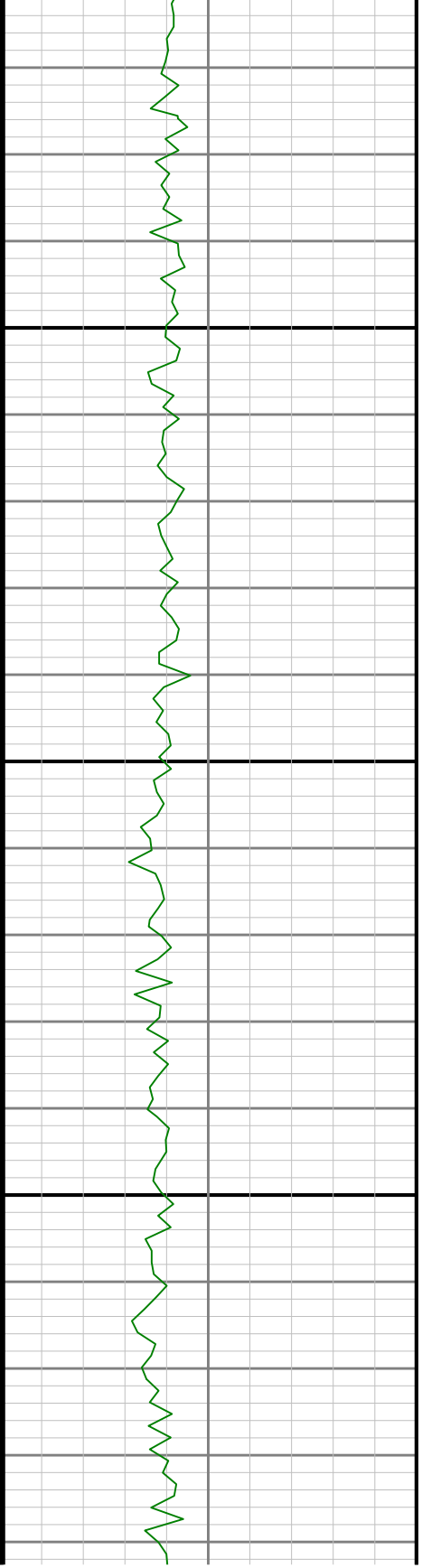
4400

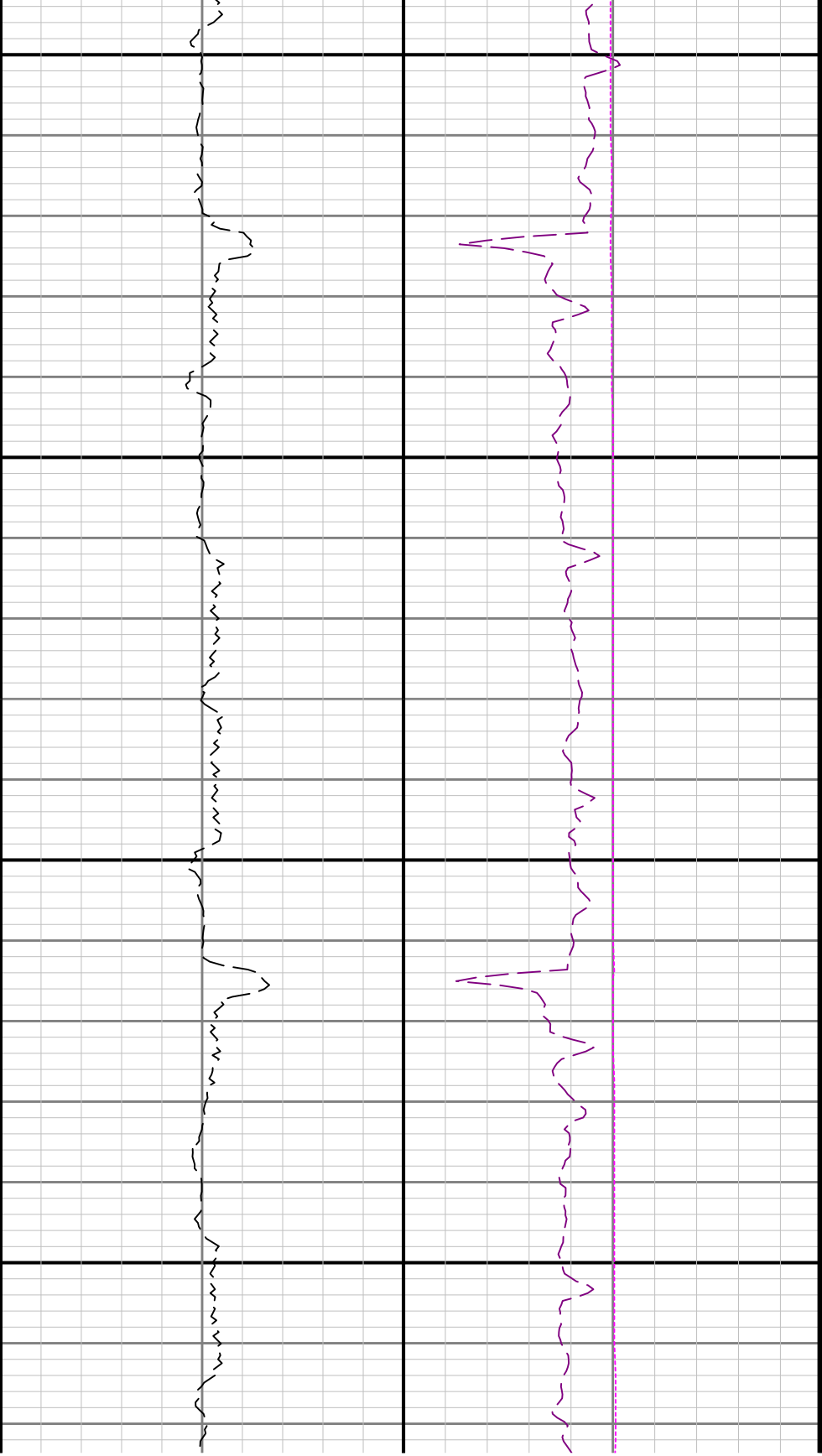




4500

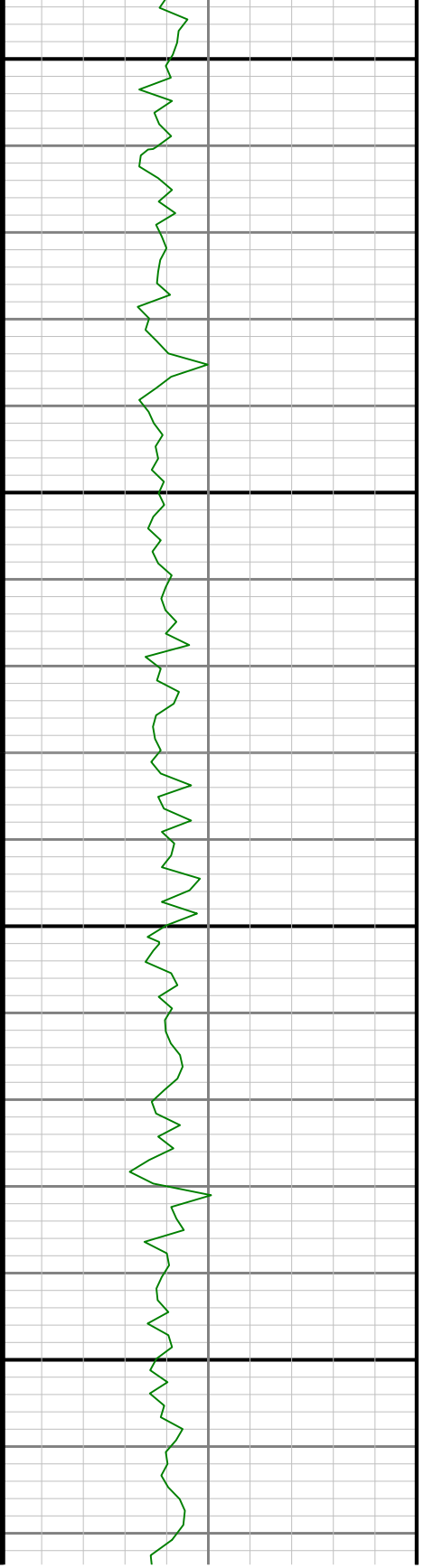
4600

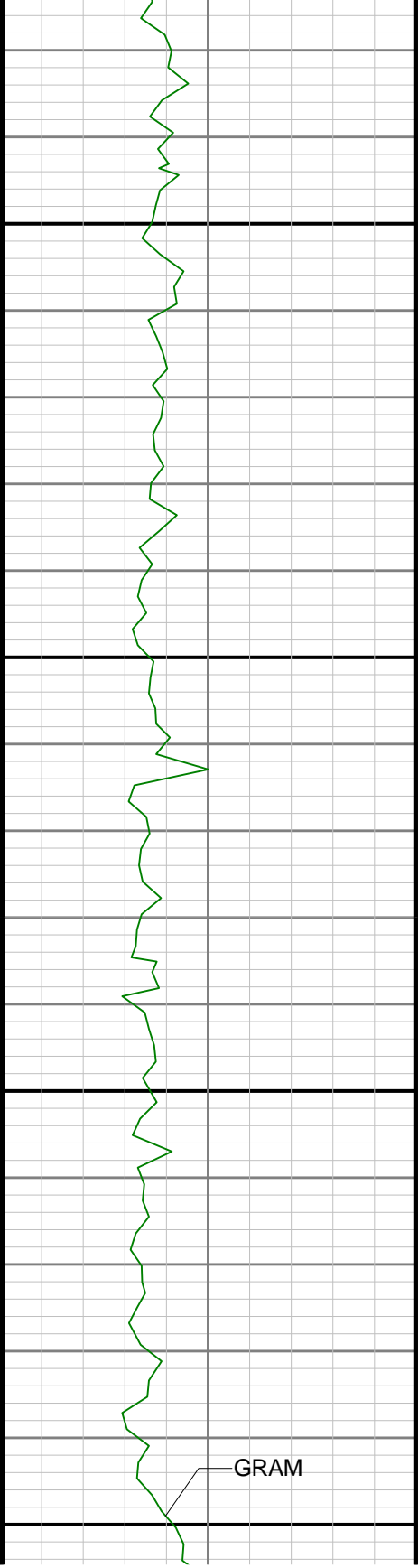




4700

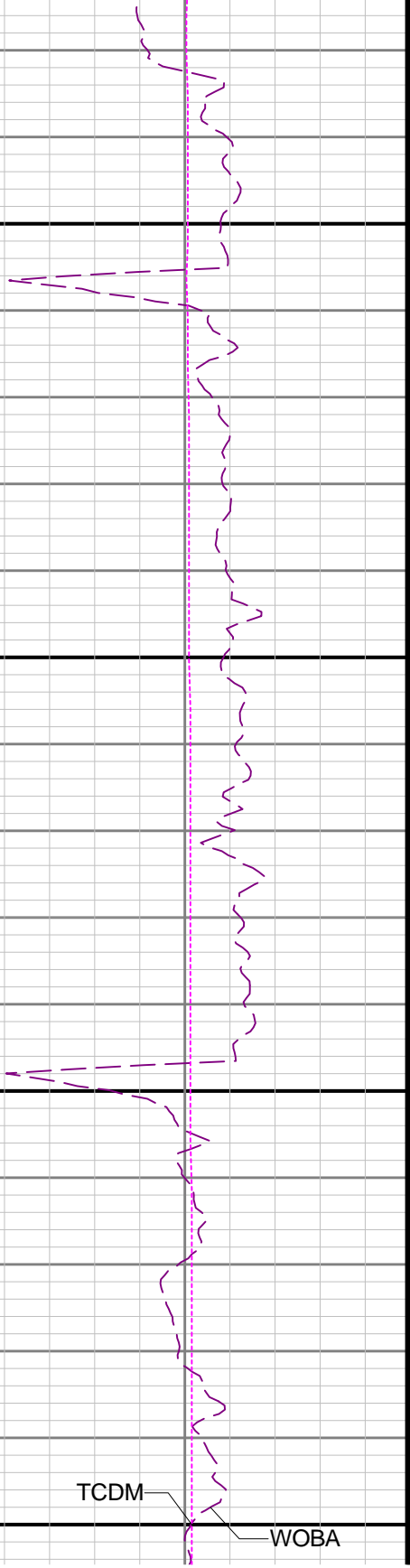
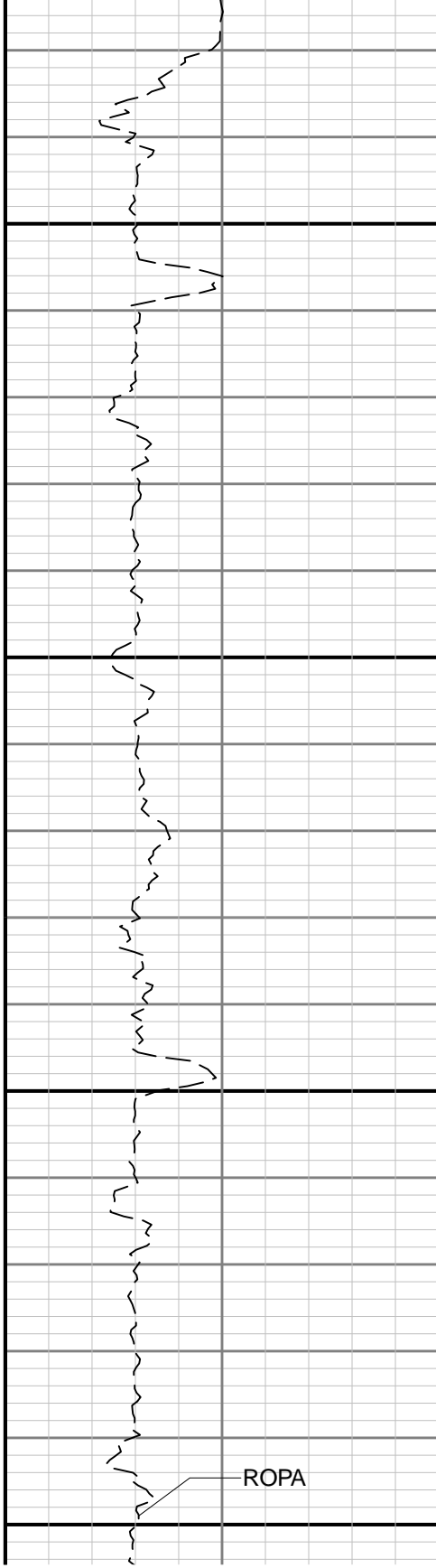
4800





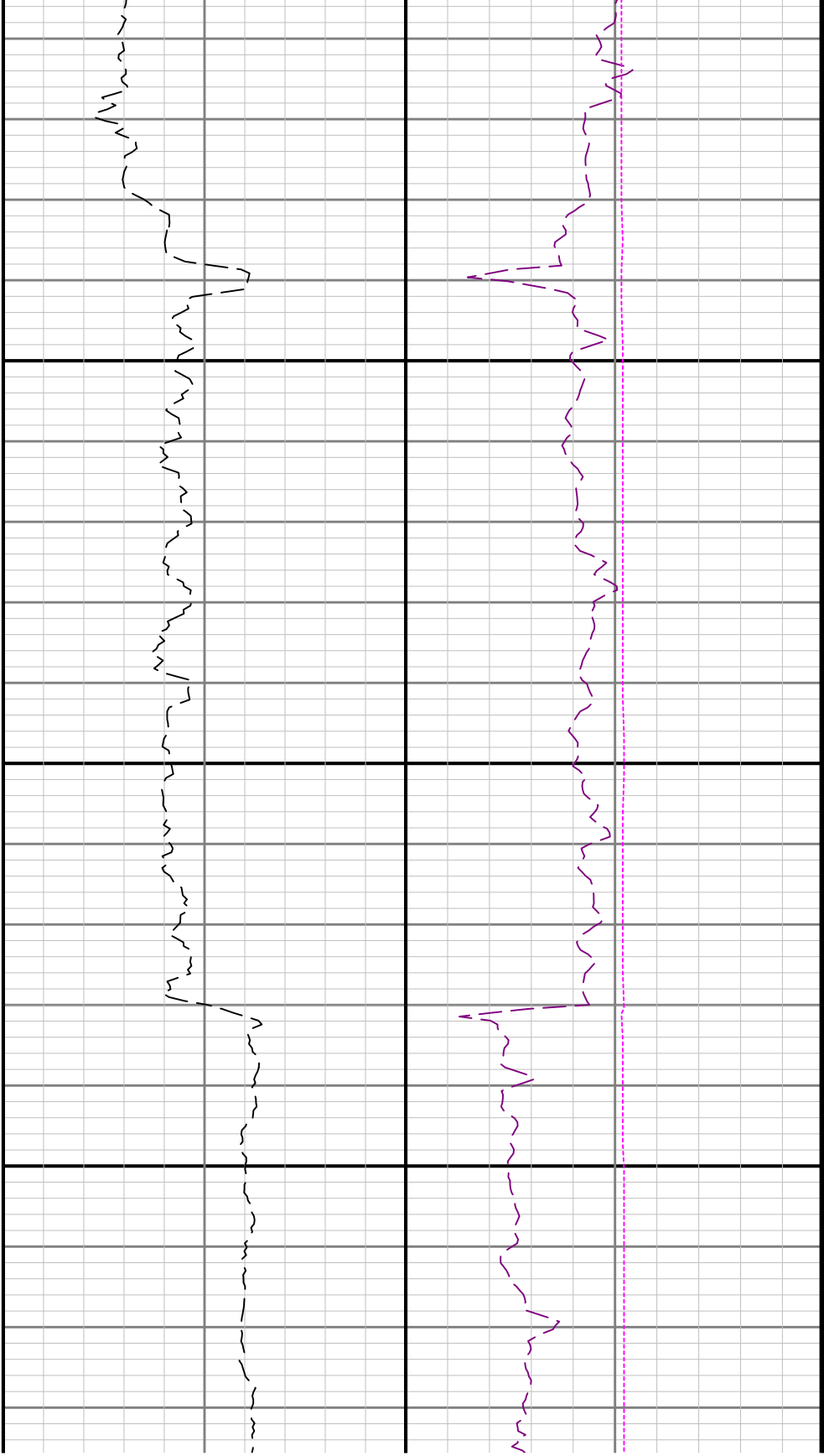
4900

5000

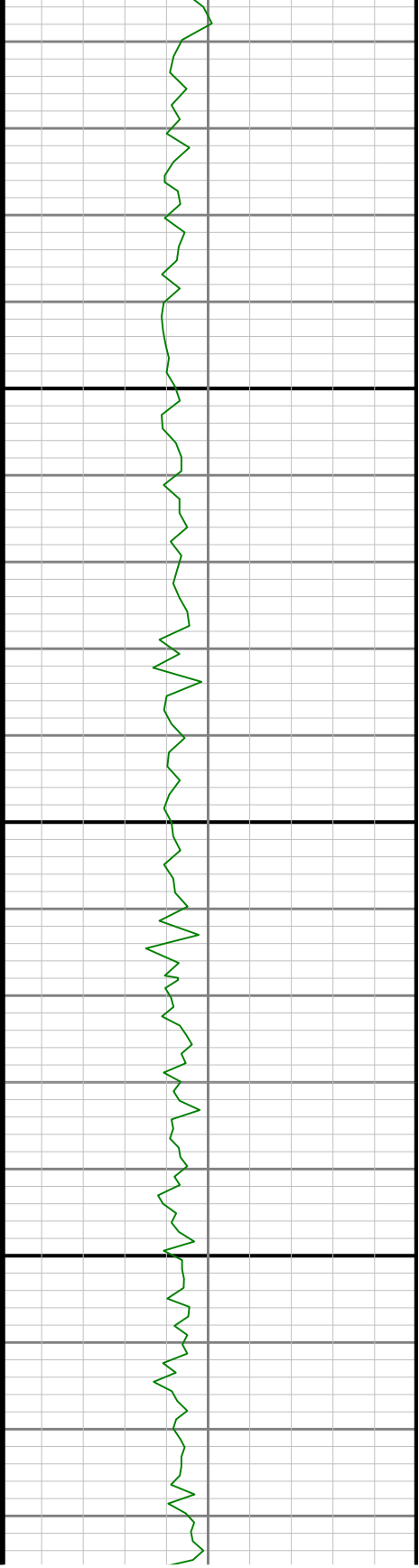


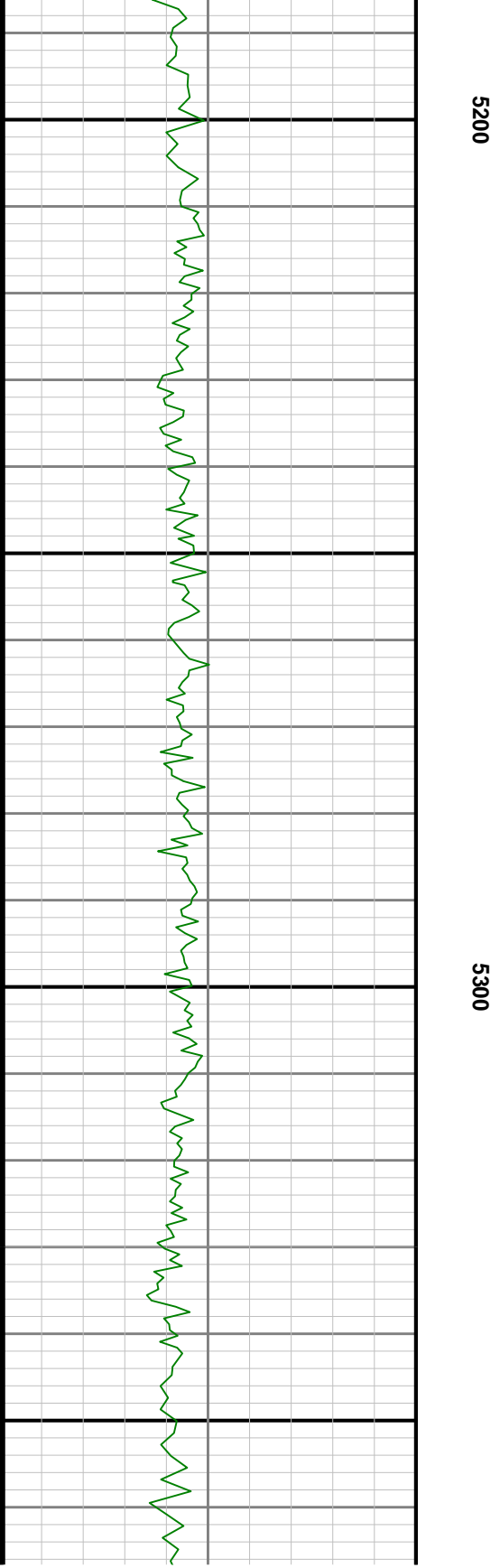
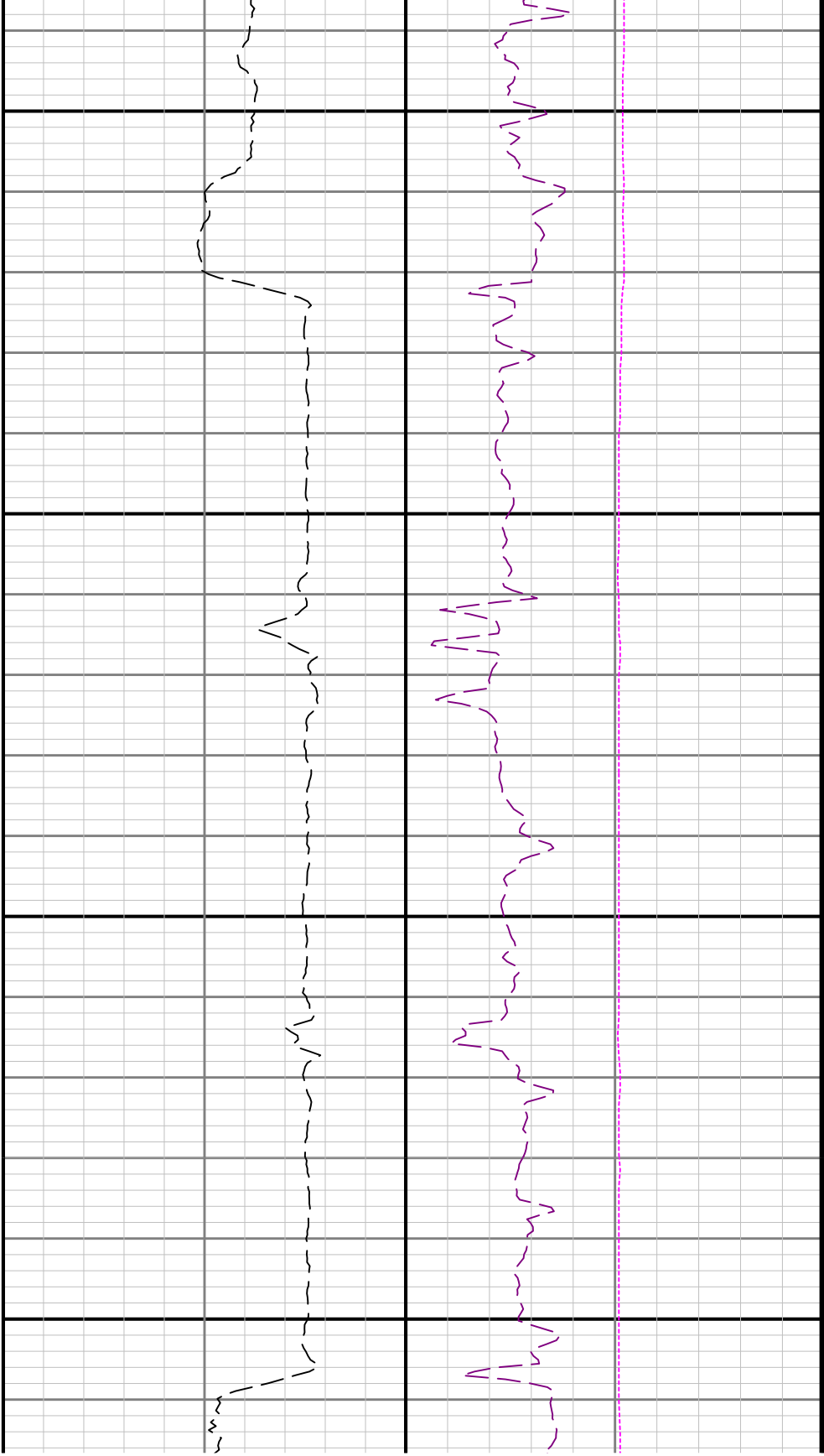
TCDM

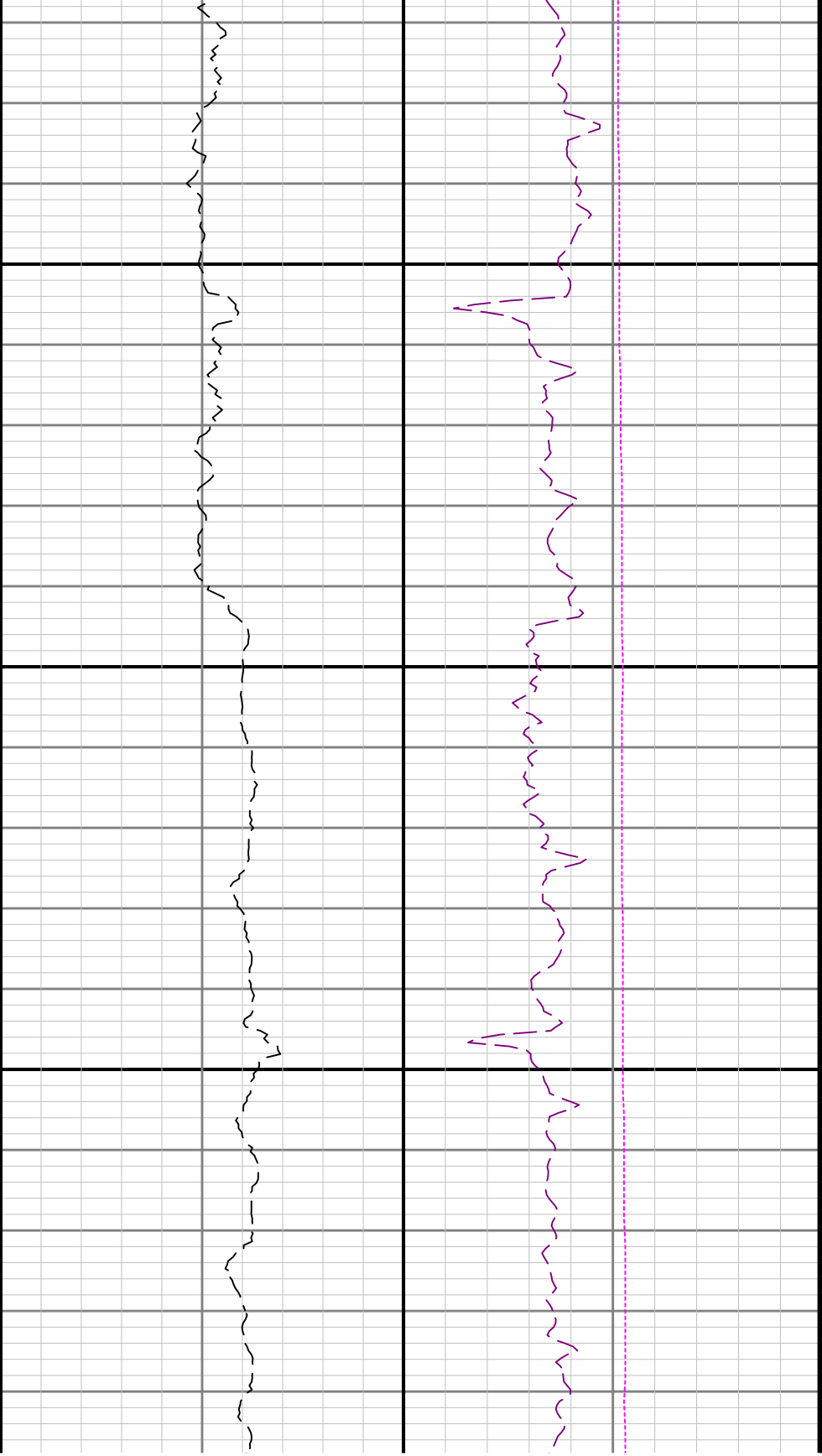
WOBA



5100

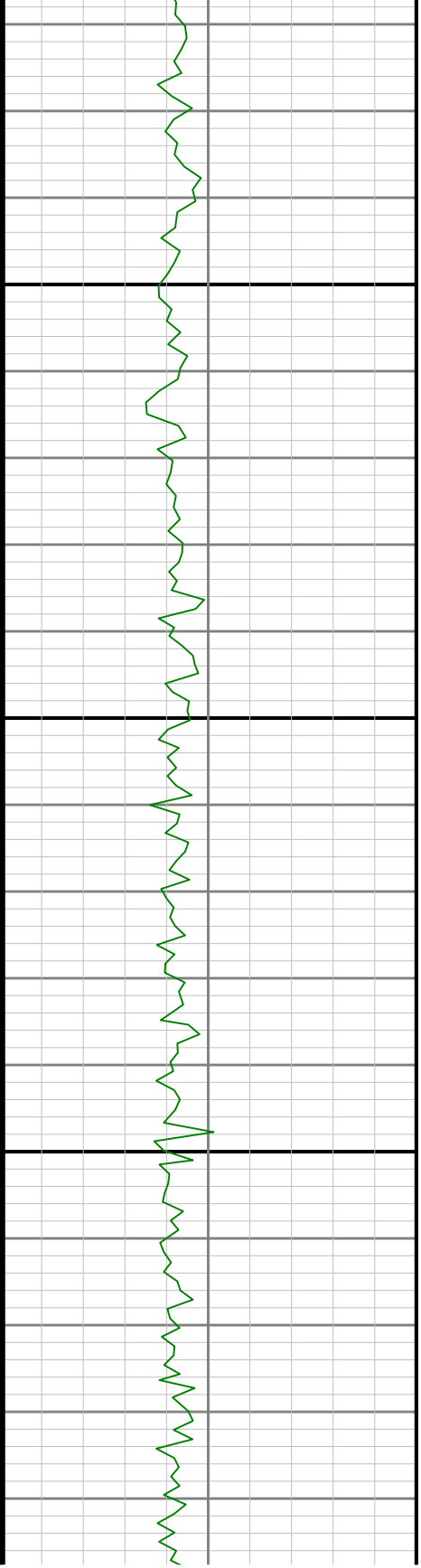


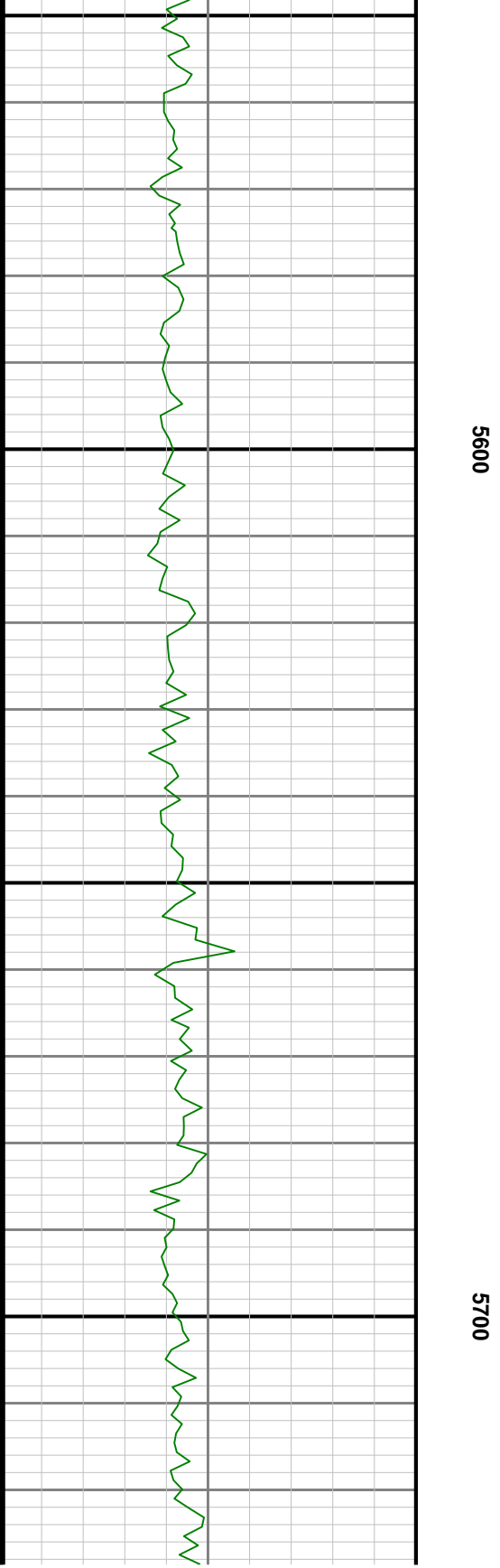
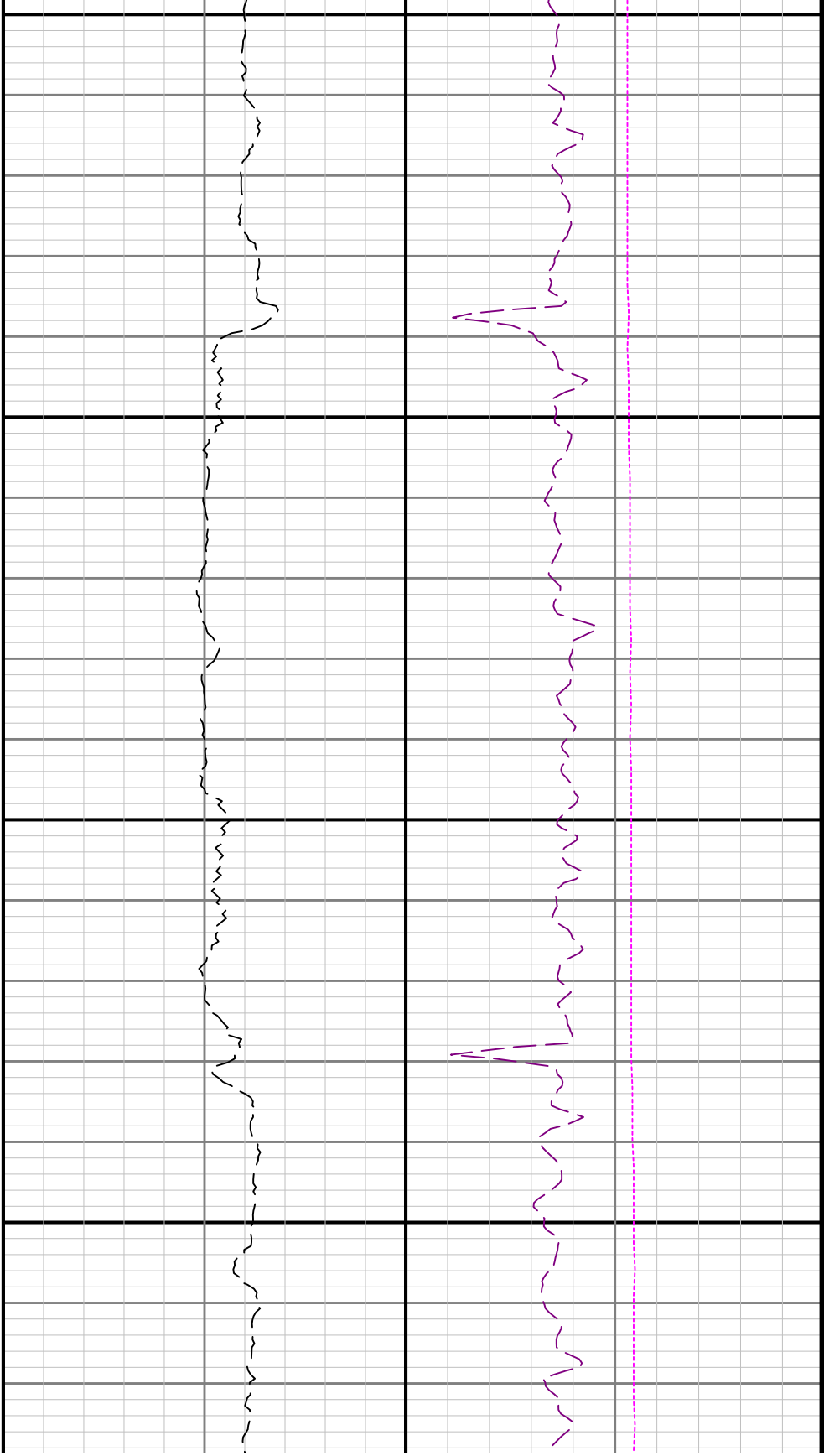


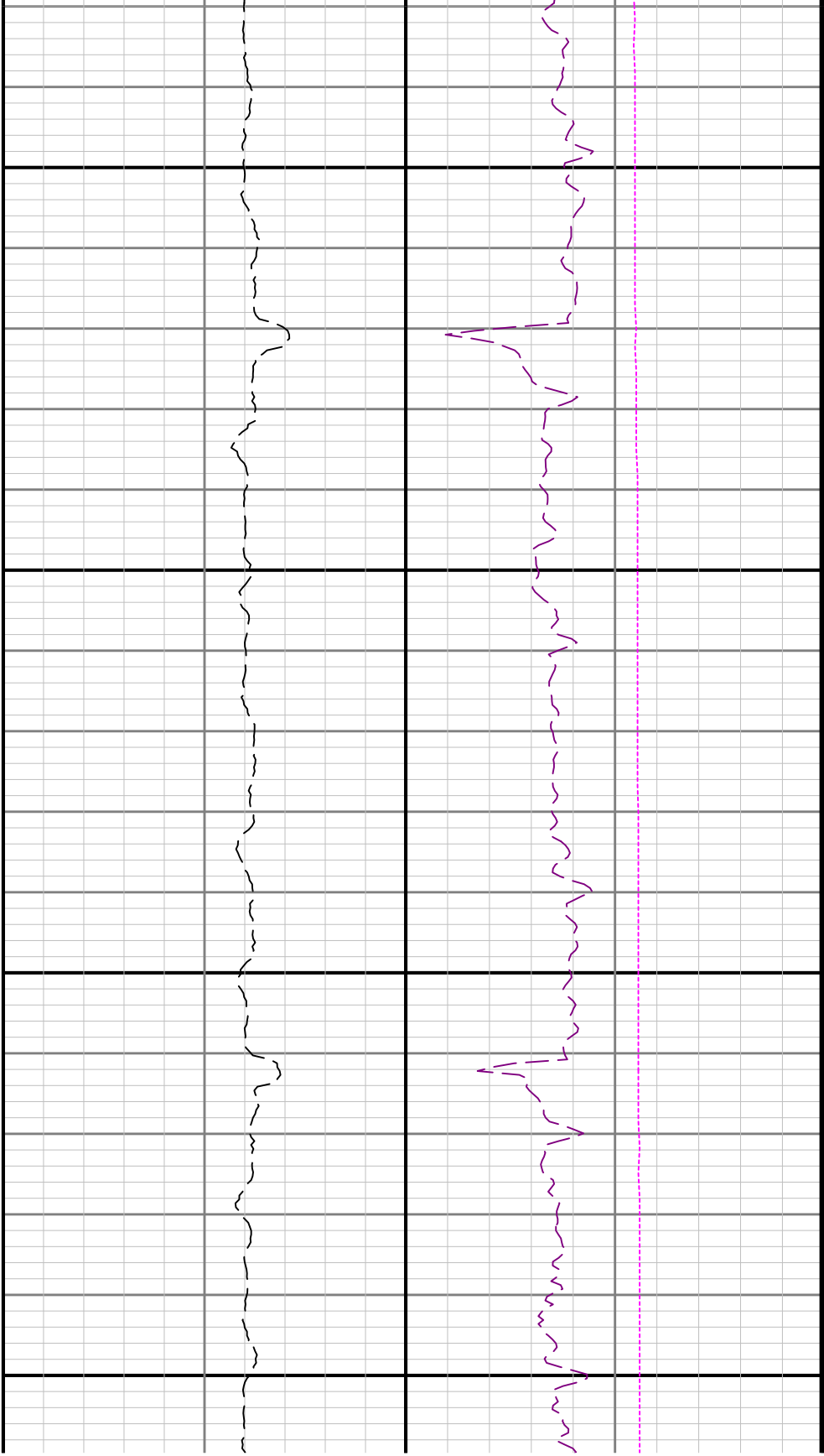


5400

5500

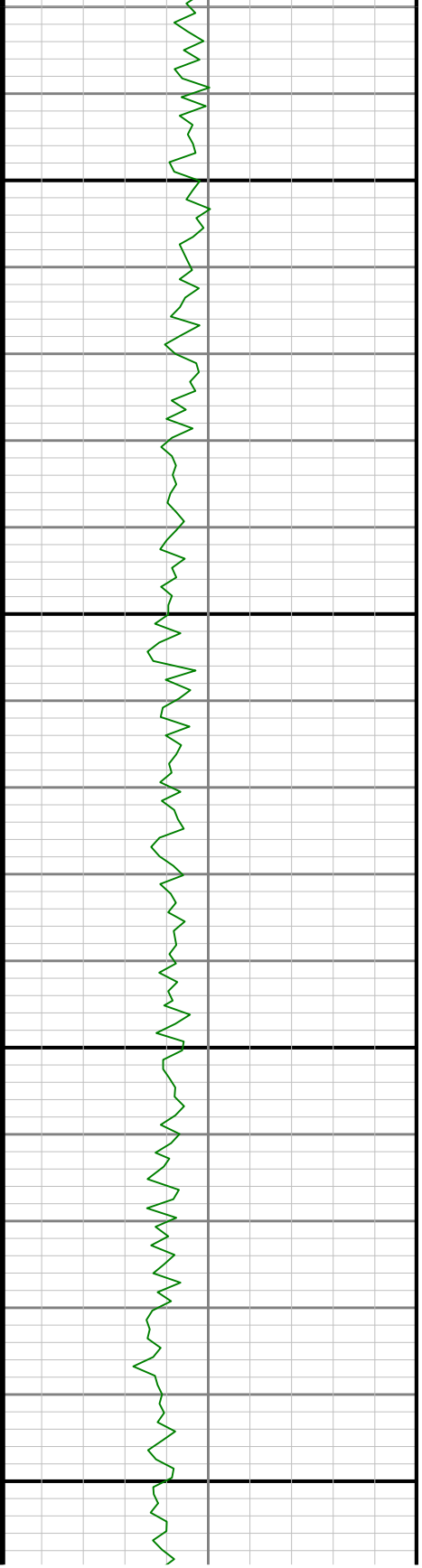


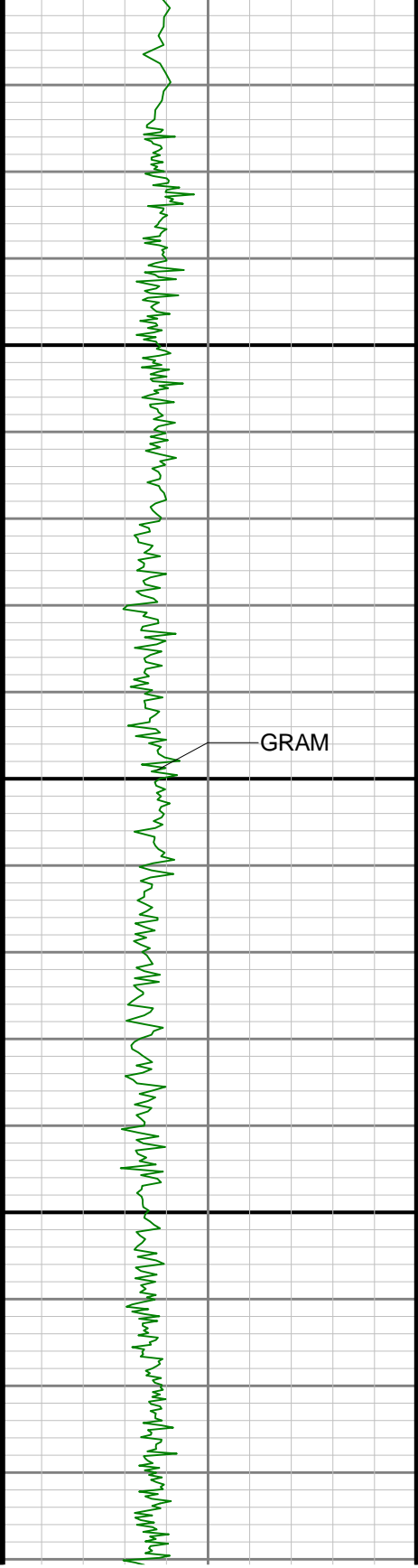




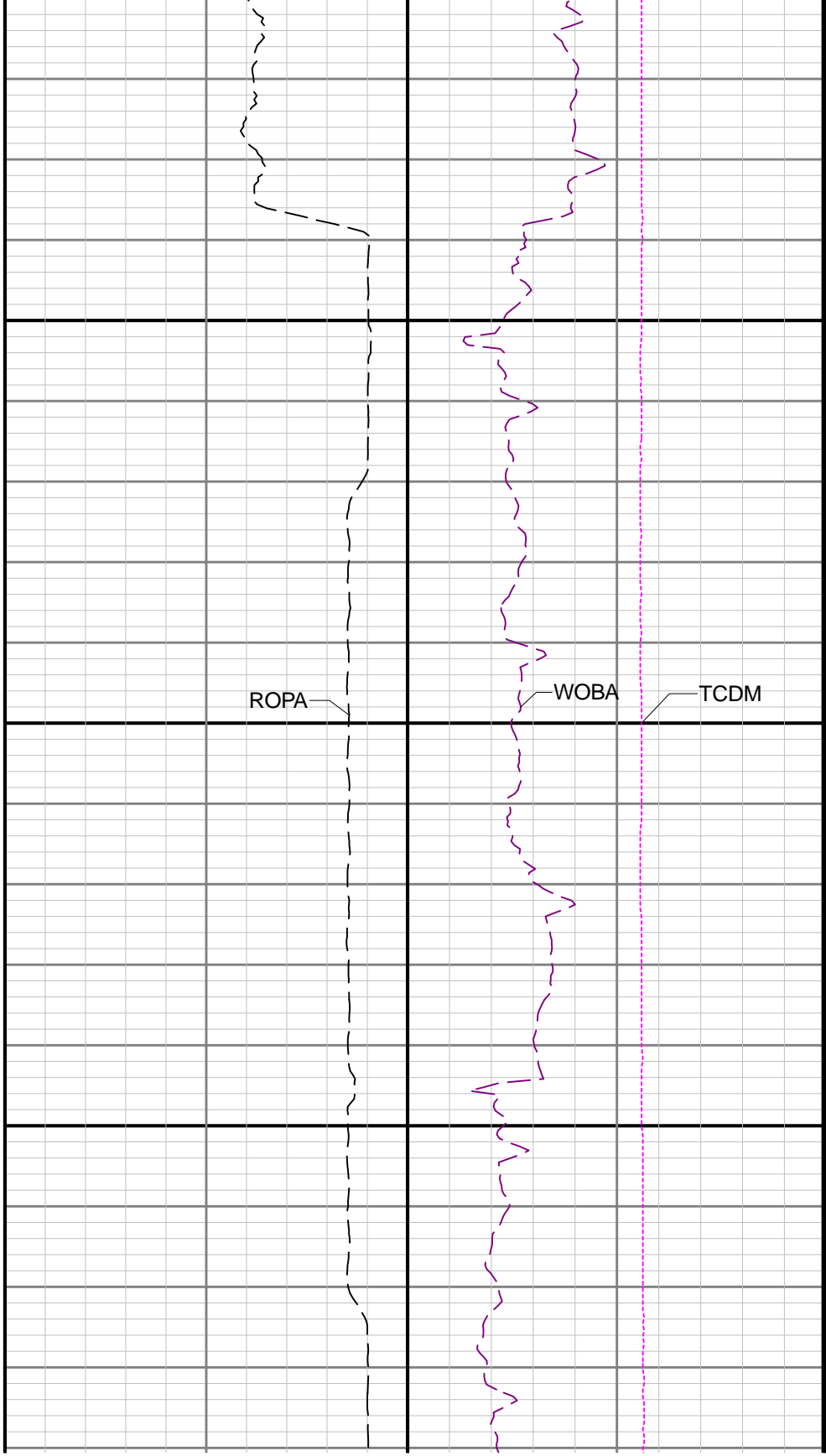
5800

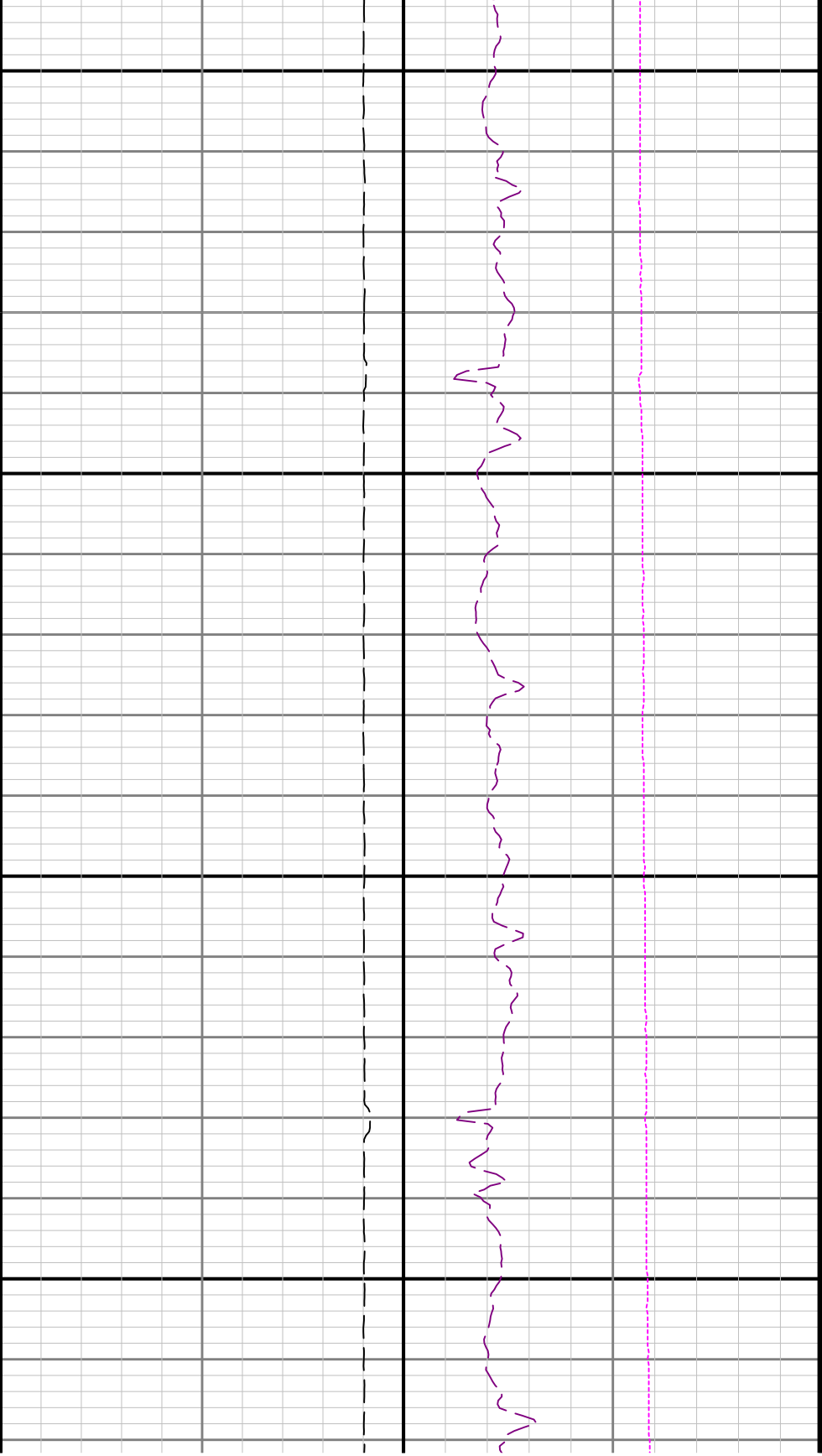
5900





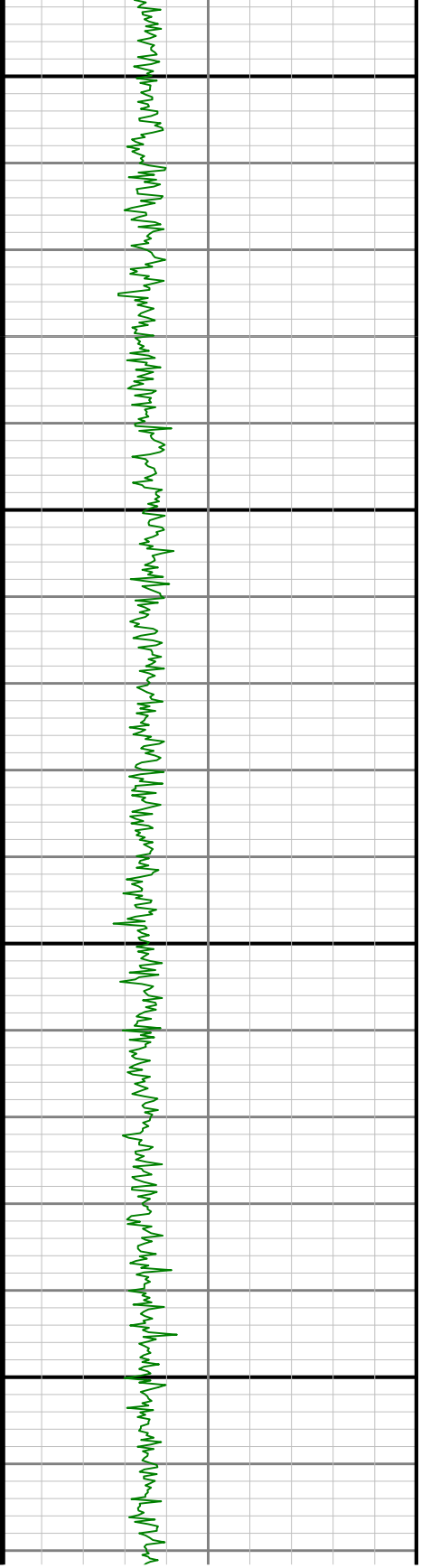
0009

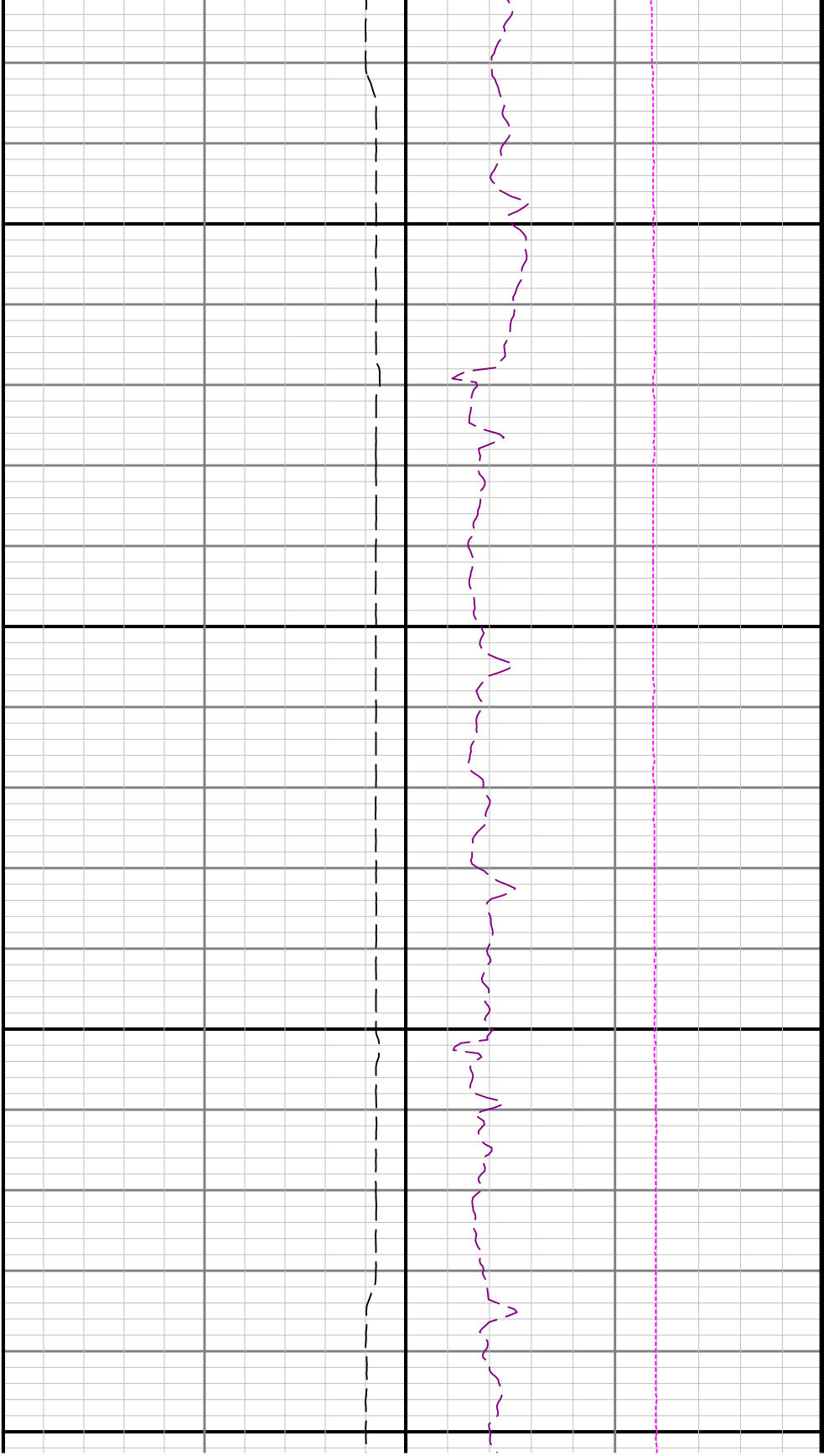




6100

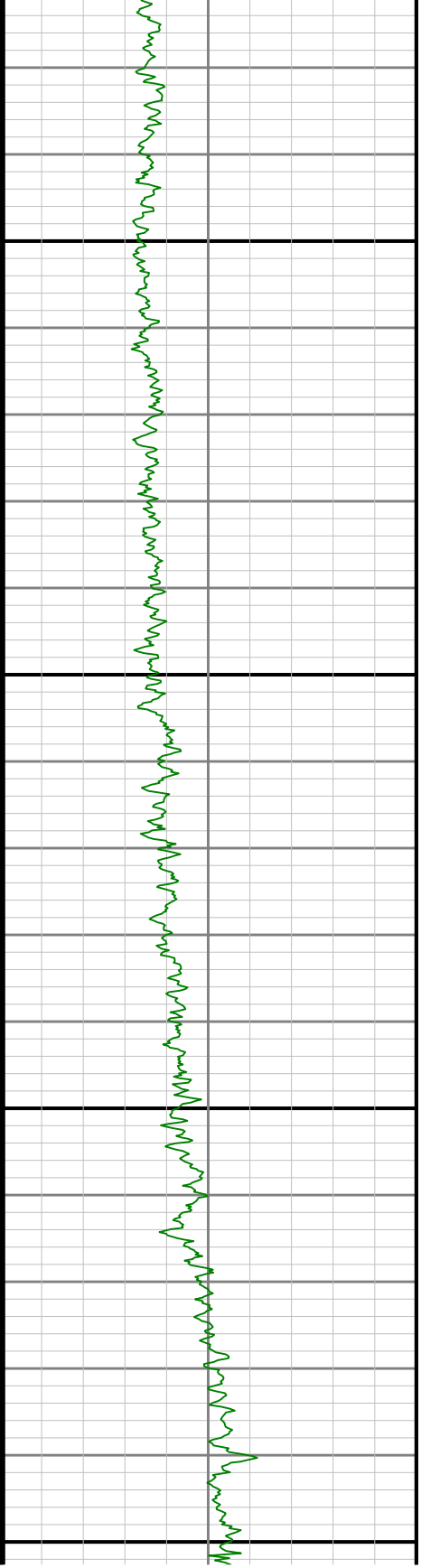
6200

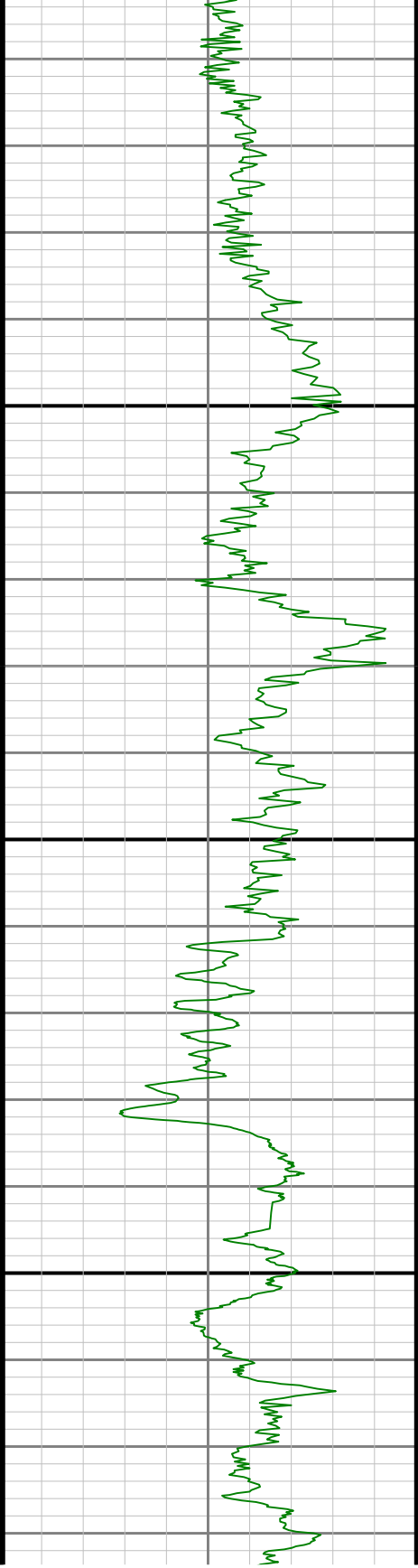




6300

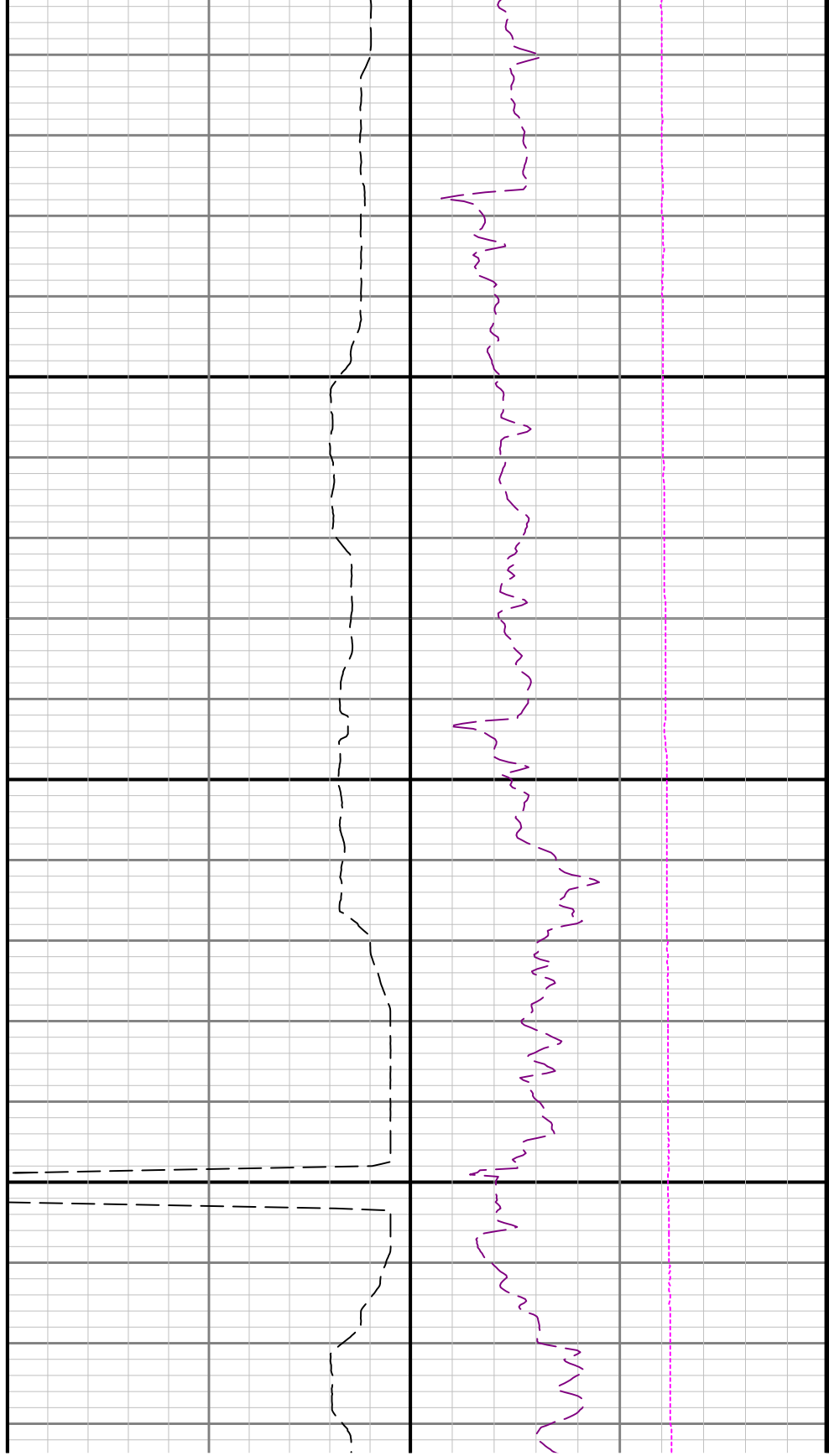
6400

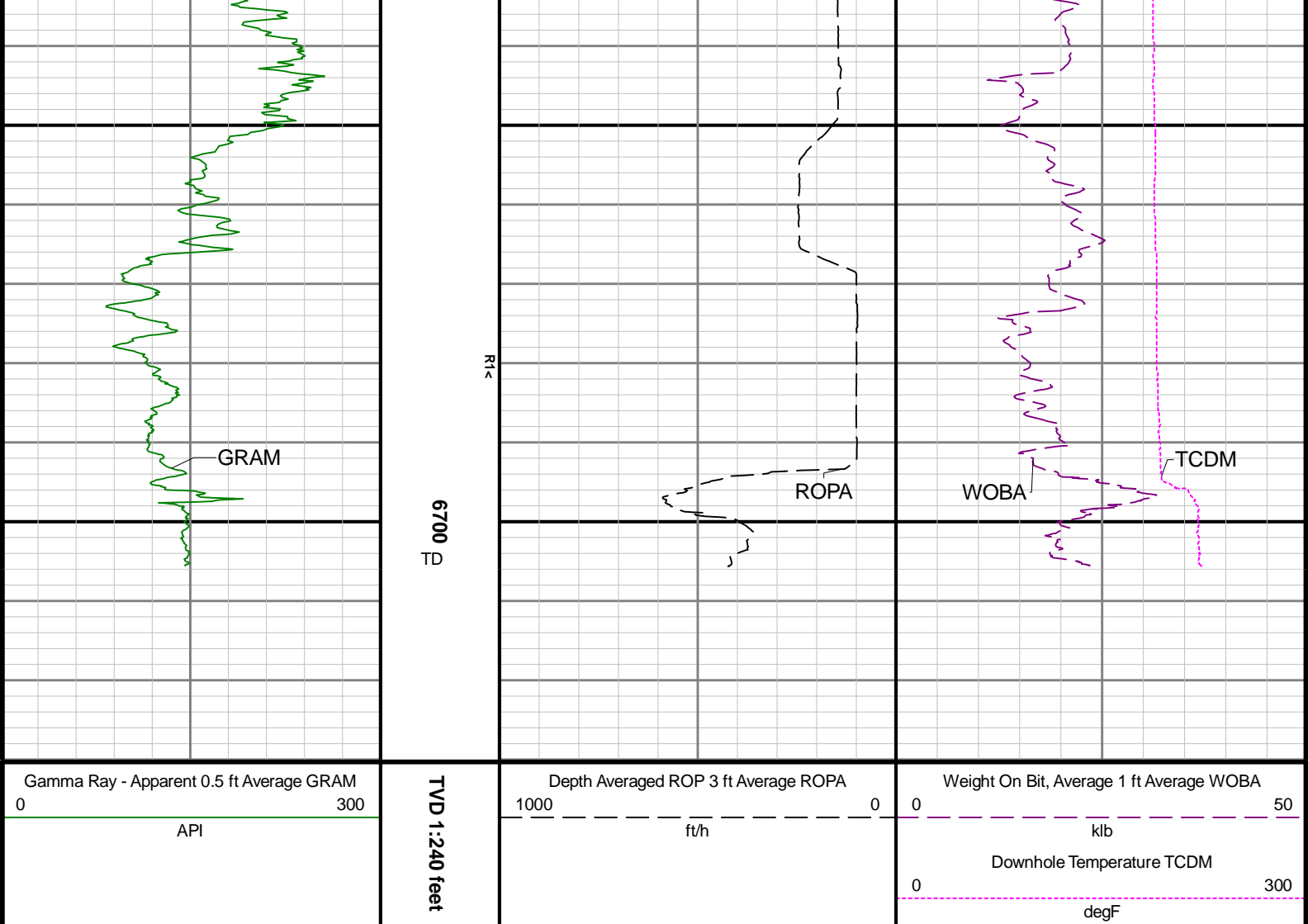




6500

6600





Directional Survey Summary													
Latitude:		40° 26' 13.884" N				Longitude:		104° 32' 25.224" W					
North Reference:		Grid				Drill Depth Zero:		Rig Floor					
Vertical Datum is:		Mean Sea Level				Vertical Datum to DDZ: (ft)		4662.00					
Vertical Section North: (ft)		0.00				Vertical Section East: (ft)		0.00					
Vertical Section Azimuth: (deg)		3.46											
Grid Convergence: (deg)		-0.62				Magnetic Declination: (deg)		7.74					
Total Correction: (deg)		7.12				TVD Calculation Method:		Minimum Curvature					
Magnetic Correction:		Off				Local Magnetic Field: (nT)		51962					
Local Magnetic Dip Angle: (deg)		66.81				Local Gravity Field: (m/s2)		9.800					
Tie-In / Projection	Measured Depth (ft)	Inclination (deg)	Azimuth (deg)	Temperature (degF)	North (ft)	East (ft)	True Vertical Depth (ft)	TVD Subsea (ft)	Vertical Section (ft)	Course Length (ft)	Dog Leg Severity (deg/100ft)	Build Rate (deg/100ft)	Turn Rate (deg/100ft)
Tie-In	0.00	0.00	0.00	N/A	0.00	0.00	0.00	-4662.00	0.00	0.00	0.00	0.00	0.00
	82.00	0.21	270.74	N/A	0.00	-0.15	82.00	-4580.00	-0.01	82.00	0.26	0.26	-108.85
	175.00	0.34	327.25	N/A	0.24	-0.47	175.00	-4487.00	0.21	93.00	0.31	0.14	60.76
	267.00	0.23	303.11	N/A	0.57	-0.77	267.00	-4395.00	0.52	92.00	0.17	-0.12	-26.24
	361.00	0.35	355.38	N/A	0.96	-0.95	361.00	-4301.00	0.90	94.00	0.29	0.13	55.61
	456.00	0.44	126.47	N/A	1.03	-0.68	456.00	-4206.00	0.99	95.00	0.76	0.09	137.99
	554.00	0.24	7.44	N/A	0.88	-0.87	550.00	-4114.00	0.88	95.00	0.68	0.04	105.00

		351.00	0.21	7.44	N/A	0.96	-0.37	350.99	-4111.01	0.96	93.00	0.60	-0.24	-123.29
		645.00	0.05	334.35	N/A	1.19	-0.36	644.99	-4017.01	1.17	94.00	0.18	-0.17	-35.20
		740.00	0.07	240.74	N/A	1.20	-0.43	739.99	-3922.01	1.17	95.00	0.09	0.02	-98.54
		835.00	0.33	0.19	N/A	1.45	-0.48	834.99	-3827.01	1.41	95.00	0.39	0.27	125.74
		929.00	0.28	228.72	N/A	1.57	-0.65	928.99	-3733.01	1.52	94.00	0.59	-0.05	-139.86
		1024.00	0.09	188.11	N/A	1.34	-0.84	1023.99	-3638.01	1.29	95.00	0.23	-0.20	-42.75
		1119.00	0.29	204.85	N/A	1.05	-0.95	1118.99	-3543.01	0.99	95.00	0.22	0.21	17.62
		1213.00	0.17	296.26	N/A	0.89	-1.17	1212.99	-3449.01	0.82	94.00	0.36	-0.13	97.24
		1308.00	0.08	35.95	N/A	1.01	-1.26	1307.99	-3354.01	0.93	95.00	0.21	-0.09	104.94
		1403.00	0.18	174.41	N/A	0.91	-1.21	1402.99	-3259.01	0.84	95.00	0.26	0.11	145.75
		1497.00	0.36	274.53	N/A	0.79	-1.49	1496.99	-3165.01	0.70	94.00	0.46	0.19	106.51
		1592.00	0.22	298.19	N/A	0.90	-1.95	1591.99	-3070.01	0.78	95.00	0.19	-0.15	24.91
		1687.00	0.34	3.31	N/A	1.27	-2.09	1686.99	-2975.01	1.14	95.00	0.33	0.13	68.55
		1782.00	0.22	312.33	N/A	1.67	-2.21	1781.99	-2880.01	1.53	95.00	0.28	-0.13	-53.66
		1876.00	0.49	244.16	N/A	1.62	-2.71	1875.99	-2786.01	1.45	94.00	0.49	0.29	-72.52
		1920.00	0.66	240.37	N/A	1.41	-3.09	1919.98	-2742.02	1.22	44.00	0.40	0.39	-8.61
		1987.00	0.13	214.67	101.4	1.16	-3.47	1986.98	-2675.02	0.95	67.00	0.81	-0.79	-38.36
		2082.00	1.06	143.86	106.8	0.36	-3.02	2081.98	-2580.02	0.18	95.00	1.08	0.98	-74.54
		2176.00	3.25	146.45	109.5	-2.56	-1.03	2175.90	-2486.10	-2.62	94.00	2.33	2.33	2.76
		2271.00	4.79	147.21	109.5	-8.14	2.61	2270.67	-2391.33	-7.97	95.00	1.62	1.62	0.80
		2366.00	6.13	152.68	112.2	-15.98	7.08	2365.23	-2296.77	-15.53	95.00	1.51	1.41	5.76
		2461.00	7.91	152.08	114.9	-26.27	12.47	2459.52	-2202.48	-25.47	95.00	1.88	1.87	-0.63
		2556.00	10.14	150.94	117.6	-39.22	19.52	2552.35	-2109.65	-37.97	94.00	2.38	2.37	-1.21
		2650.00	13.56	152.35	120.3	-56.40	28.75	2645.31	-2016.69	-54.56	95.00	3.61	3.60	1.48
		2745.00	15.50	152.18	120.3	-77.49	39.85	2737.27	-1924.73	-74.95	95.00	2.04	2.04	-0.18
		2839.00	15.84	152.30	123.0	-99.96	51.67	2827.77	-1834.23	-96.66	94.00	0.36	0.36	0.13
		2934.00	16.18	138.55	125.7	-121.37	66.47	2919.12	-1742.88	-117.13	95.00	4.00	0.36	-14.47
		3029.00	15.99	139.48	128.4	-141.23	83.73	3010.40	-1651.60	-135.92	95.00	0.34	-0.20	0.98
		3124.00	15.73	140.24	128.4	-161.08	100.47	3101.79	-1560.21	-154.72	95.00	0.35	-0.27	0.80
		3218.00	15.77	139.18	131.1	-180.54	116.97	3192.26	-1469.74	-173.15	94.00	0.31	0.04	-1.13
		3313.00	15.82	140.14	131.1	-200.25	133.70	3283.67	-1378.33	-191.82	95.00	0.28	0.05	1.01
		3407.00	15.62	139.57	168.9	-219.72	150.12	3374.16	-1287.84	-210.26	94.00	0.27	-0.21	-0.61
		3502.00	15.61	140.58	133.8	-239.33	166.53	3465.65	-1196.35	-228.84	95.00	0.29	-0.01	1.06
		3596.00	16.08	139.02	136.5	-258.93	183.10	3556.08	-1105.92	-247.41	94.00	0.67	0.50	-1.66
		3691.00	16.05	139.08	136.5	-278.78	200.33	3647.37	-1014.63	-266.19	95.00	0.04	-0.03	0.06
		3785.00	16.05	139.51	139.2	-298.49	217.28	3737.70	-924.30	-284.83	94.00	0.13	0.00	0.46
		3974.00	15.36	139.17	139.2	-337.30	250.61	3919.65	-742.35	-321.56	189.00	0.37	-0.37	-0.18
		4068.00	15.01	140.03	141.9	-356.04	266.57	4010.37	-651.63	-339.31	94.00	0.44	-0.37	0.91
		4163.00	15.02	142.94	144.6	-375.30	281.89	4102.12	-559.88	-357.60	95.00	0.79	0.01	3.06
		4257.00	15.06	143.17	144.6	-394.79	296.55	4192.90	-469.10	-376.17	94.00	0.08	0.04	0.24
		4352.00	14.94	143.32	139.2	-414.49	311.27	4284.67	-377.33	-394.95	95.00	0.13	-0.13	0.16
		4447.00	14.70	143.76	144.6	-434.03	325.71	4376.51	-285.49	-413.59	95.00	0.28	-0.25	0.46
		4541.00	14.48	143.89	144.6	-453.15	339.68	4467.47	-194.53	-431.82	94.00	0.24	-0.23	0.14
		4636.00	14.76	143.71	147.3	-472.50	353.85	4559.40	-102.60	-450.28	95.00	0.30	0.29	-0.19
		4731.00	14.65	143.58	150.0	-491.92	368.14	4651.29	-10.71	-468.80	95.00	0.12	-0.12	-0.14
		4825.00	14.40	143.65	150.0	-510.90	382.13	4742.28	80.28	-486.90	94.00	0.27	-0.27	0.07
		4920.00	14.53	143.34	152.7	-529.97	396.24	4834.27	172.27	-505.09	95.00	0.16	0.14	-0.33
		5014.00	14.64	142.66	152.7	-548.87	410.49	4925.24	263.24	-523.10	94.00	0.22	0.12	-0.72
		5108.00	13.94	143.53	155.4	-567.42	424.42	5016.33	354.33	-540.78	94.00	0.78	-0.74	0.93
		5203.00	13.57	143.20	155.4	-585.55	437.90	5108.61	446.61	-558.06	95.00	0.40	-0.39	-0.35
		5297.00	14.12	143.86	155.4	-603.64	451.27	5199.88	537.88	-575.31	94.00	0.61	0.59	0.70
		5486.00	14.07	142.73	155.4	-640.54	478.78	5383.19	721.19	-610.48	189.00	0.15	-0.03	-0.60
		5581.00	14.13	143.80	158.1	-659.09	492.62	5475.33	813.33	-628.16	95.00	0.28	0.06	1.13
		5675.00	14.73	143.65	158.1	-677.97	506.48	5566.36	904.36	-646.17	94.00	0.64	0.64	-0.16
		5770.00	14.27	143.96	163.5	-697.17	520.53	5658.33	996.33	-664.48	95.00	0.49	-0.48	0.33
		5864.00	14.23	143.26	163.5	-715.79	534.25	5749.44	1087.44	-682.24	94.00	0.19	-0.04	-0.74
		5959.00	14.77	144.36	166.2	-734.99	548.29	5841.41	1179.41	-700.56	95.00	0.64	0.57	1.16
		6054.00	15.19	141.01	166.2	-754.51	563.18	5933.19	1271.19	-719.14	95.00	1.01	0.44	-3.53
		6149.00	10.14	107.50	168.9	-766.72	579.02	6025.97	1363.97	-730.38	95.00	9.17	-5.32	-35.27
		6243.00	10.34	65.31	168.9	-765.68	594.60	6118.59	1456.59	-728.40	94.00	7.81	0.21	-44.88
		6338.00	14.56	29.42	174.3	-751.69	608.23	6211.47	1549.47	-713.61	95.00	9.07	4.44	-37.78

	6433.00	21.81	20.43	177.0	-724.71	620.28	6301.69	1639.69	-685.96	95.00	8.16	7.63	-9.46
	6527.00	30.54	17.01	179.7	-685.43	633.39	6385.97	1723.97	-645.96	94.00	9.42	9.29	-3.64
	6622.00	39.98	13.12	179.7	-632.50	647.41	6463.46	1801.46	-592.28	95.00	10.21	9.94	-4.09
	6716.00	48.61	9.63	182.5	-568.20	660.19	6530.69	1868.69	-527.32	94.00	9.54	9.18	-3.71
	6811.00	56.04	7.17	185.2	-493.86	671.08	6588.72	1926.72	-452.46	95.00	8.08	7.82	-2.59
	6906.00	65.80	4.99	187.9	-411.40	679.79	6634.84	1972.84	-369.63	95.00	10.47	10.27	-2.29
	7000.00	73.39	3.02	187.9	-323.59	685.90	6667.59	2005.59	-281.60	94.00	8.31	8.07	-2.10
	7095.00	81.78	358.79	190.6	-230.92	687.31	6688.01	2026.01	-189.02	95.00	9.84	8.83	-4.45
	7189.00	89.85	357.29	193.3	-137.31	684.10	6694.86	2032.86	-95.77	94.00	8.73	8.59	-1.60
	7284.00	89.88	357.52	198.7	-42.41	679.80	6695.08	2033.08	-1.30	95.00	0.24	0.03	0.24
	7378.00	89.75	357.86	201.4	51.52	676.01	6695.39	2033.39	92.22	94.00	0.39	-0.14	0.36
	7473.00	89.85	359.54	204.1	146.49	673.86	6695.72	2033.72	186.89	95.00	1.77	0.11	1.77
	7568.00	90.09	359.55	206.8	241.48	673.10	6695.77	2033.77	281.67	95.00	0.25	0.25	0.01
	7662.00	90.00	358.89	209.5	335.48	671.82	6695.69	2033.69	375.41	94.00	0.71	-0.10	-0.70
	7757.00	90.40	0.85	209.5	430.47	671.61	6695.36	2033.36	470.22	95.00	2.11	0.42	2.06
	7852.00	89.38	359.70	212.2	525.47	672.06	6695.55	2033.55	565.07	95.00	1.62	-1.07	-1.21
	7947.00	89.72	359.41	214.9	620.46	671.32	6696.29	2034.29	659.84	95.00	0.47	0.36	-0.31
	8041.00	89.75	359.28	214.9	714.45	670.25	6696.73	2034.73	753.60	94.00	0.14	0.03	-0.14
	8136.00	89.82	359.54	217.6	809.45	669.27	6697.08	2035.08	848.36	95.00	0.28	0.07	0.27
	8230.00	89.88	358.80	217.6	903.44	667.91	6697.33	2035.33	942.10	94.00	0.79	0.06	-0.79
	8325.00	89.63	359.49	217.6	998.42	666.49	6697.74	2035.74	1036.83	95.00	0.77	-0.26	0.73
	8420.00	90.31	1.21	217.6	1093.42	667.07	6697.78	2035.78	1131.68	95.00	1.95	0.72	1.81
	8514.00	88.28	358.64	217.6	1187.40	666.95	6698.94	2036.94	1225.48	94.00	3.48	-2.16	-2.73
	8609.00	89.26	359.79	220.3	1282.36	665.65	6700.98	2038.98	1320.20	95.00	1.59	1.03	1.21
	8704.00	89.05	358.38	220.3	1377.34	664.13	6702.38	2040.38	1414.91	95.00	1.50	-0.22	-1.48
	8799.00	89.35	0.59	220.3	1472.32	663.28	6703.71	2041.71	1509.67	95.00	2.35	0.32	2.33
	8893.00	89.51	357.98	220.3	1566.30	662.11	6704.64	2042.64	1603.40	94.00	2.78	0.17	-2.78
	8988.00	89.60	0.35	220.3	1661.28	660.72	6705.38	2043.38	1698.13	95.00	2.50	0.09	2.49
	9083.00	90.12	359.71	223.0	1756.28	660.77	6705.61	2043.61	1792.96	95.00	0.87	0.55	-0.67
	9178.00	90.25	359.83	225.7	1851.28	660.39	6705.31	2043.31	1887.76	95.00	0.19	0.14	0.13
	9272.00	90.28	0.97	225.7	1945.27	661.05	6704.87	2042.87	1981.62	94.00	1.21	0.03	1.21
	9367.00	89.97	0.01	225.7	2040.27	661.86	6704.67	2042.67	2076.49	95.00	1.06	-0.33	-1.01
	9461.00	89.78	359.12	225.7	2134.26	661.14	6704.87	2042.87	2170.27	94.00	0.97	-0.20	-0.95
	9556.00	90.06	359.84	225.7	2229.26	660.28	6705.00	2043.00	2265.04	95.00	0.81	0.29	0.76
	9651.00	89.85	359.53	228.4	2324.26	659.76	6705.08	2043.08	2359.84	95.00	0.39	-0.22	-0.33
	9746.00	90.62	0.04	228.4	2419.26	659.40	6704.69	2042.69	2454.64	95.00	0.97	0.81	0.54
	9840.00	90.46	1.17	231.1	2513.24	660.40	6703.80	2041.80	2548.52	94.00	1.21	-0.17	1.20
	9935.00	91.14	0.51	231.1	2608.22	661.79	6702.48	2040.48	2643.41	95.00	1.00	0.72	-0.69
	10124.00	90.06	359.42	231.1	2797.21	661.67	6700.50	2038.50	2832.04	189.00	0.81	-0.57	-0.58
	10219.00	89.60	359.33	225.7	2892.20	660.64	6700.78	2038.78	2926.80	95.00	0.49	-0.48	-0.09
	10313.00	89.45	358.76	228.4	2986.18	659.07	6701.56	2039.56	3020.52	94.00	0.63	-0.16	-0.61
	10408.00	89.51	358.50	231.1	3081.15	656.80	6702.42	2040.42	3115.18	95.00	0.28	0.06	-0.27
	10502.00	89.91	357.87	233.8	3175.10	653.82	6702.90	2040.90	3208.78	94.00	0.79	0.43	-0.67
	10597.00	89.72	358.66	233.8	3270.06	650.95	6703.20	2041.20	3303.38	95.00	0.86	-0.20	0.83
	10692.00	89.85	359.63	236.5	3365.05	649.53	6703.56	2041.56	3398.11	95.00	1.03	0.14	1.02
	10786.00	89.78	359.40	236.5	3459.04	648.73	6703.86	2041.86	3491.89	94.00	0.26	-0.07	-0.24
	10881.00	91.14	359.21	239.2	3554.03	647.58	6703.10	2041.10	3586.64	95.00	1.45	1.43	-0.20
	10975.00	90.52	358.49	239.2	3648.00	645.69	6701.74	2039.74	3680.32	94.00	1.01	-0.66	-0.77
	11070.00	90.65	359.51	241.9	3742.98	644.04	6700.77	2038.77	3775.03	95.00	1.08	0.14	1.07
	11164.00	91.20	359.52	241.9	3836.96	643.24	6699.25	2037.25	3868.79	94.00	0.59	0.59	0.01
	11259.00	90.37	358.82	241.9	3931.94	641.86	6697.95	2035.95	3963.51	95.00	1.14	-0.87	-0.74
	11353.00	90.71	359.49	241.9	4025.93	640.48	6697.06	2035.06	4057.24	94.00	0.80	0.36	0.71
	11448.00	90.80	359.04	244.6	4120.91	639.26	6695.81	2033.81	4151.98	95.00	0.48	0.09	-0.47
	11543.00	90.68	359.36	244.6	4215.90	637.93	6694.58	2032.58	4246.71	95.00	0.36	-0.13	0.34
	11732.00	90.62	359.42	247.3	4404.87	635.92	6692.44	2030.44	4435.22	189.00	0.04	-0.03	0.03
	11826.00	90.95	358.78	247.3	4498.85	634.44	6691.15	2029.15	4528.94	94.00	0.77	0.35	-0.68
	11921.00	90.52	359.44	247.3	4593.83	632.97	6689.93	2027.93	4623.66	95.00	0.83	-0.45	0.69
	12016.00	89.54	358.52	250.0	4688.81	631.28	6689.88	2027.88	4718.37	95.00	1.41	-1.03	-0.97
	12110.00	90.71	358.88	250.0	4782.79	629.15	6689.68	2027.68	4812.04	94.00	1.30	1.24	0.38
	12205.00	90.15	358.51	250.0	4877.76	626.98	6688.97	2026.97	4906.71	95.00	0.71	-0.59	-0.39

	12299.00	90.46	358.78	250.0	4971.73	624.76	6688.47	2026.47	5000.37	94.00	0.44	0.33	0.29
	12394.00	90.18	359.29	250.0	5066.72	623.16	6687.93	2025.93	5095.09	95.00	0.61	-0.29	0.54
	12489.00	90.89	359.68	250.0	5161.71	622.31	6687.05	2025.05	5189.86	95.00	0.85	0.75	0.41
	12583.00	89.78	0.16	250.0	5255.70	622.17	6686.50	2024.50	5283.67	94.00	1.29	-1.18	0.51
	12678.00	89.26	359.49	250.0	5350.70	621.88	6687.29	2025.29	5378.48	95.00	0.89	-0.55	-0.71
	12773.00	90.25	359.91	252.7	5445.70	621.39	6687.70	2025.70	5473.27	95.00	1.13	1.04	0.44
	12867.00	90.59	0.18	252.7	5539.69	621.46	6687.01	2025.01	5567.10	94.00	0.46	0.36	0.29
	12962.00	90.74	0.15	252.7	5634.69	621.73	6685.91	2023.91	5661.94	95.00	0.16	0.16	-0.03
	13056.00	90.28	359.32	255.4	5728.68	621.30	6685.07	2023.07	5755.74	94.00	1.01	-0.49	-0.88
	13151.00	90.09	359.67	255.4	5823.68	620.46	6684.77	2022.77	5850.51	95.00	0.42	-0.20	0.37
	13245.00	90.43	359.86	255.4	5917.67	620.08	6684.34	2022.34	5944.31	94.00	0.41	0.36	0.20
	13340.00	90.25	0.19	255.4	6012.67	620.12	6683.77	2021.77	6039.14	95.00	0.40	-0.19	0.35
	13435.00	90.74	0.27	255.4	6107.67	620.50	6682.95	2020.95	6133.98	95.00	0.52	0.52	0.08
	13530.00	90.18	359.84	255.4	6202.66	620.59	6682.19	2020.19	6228.81	95.00	0.74	-0.59	-0.45
	13624.00	89.75	359.76	255.4	6296.66	620.26	6682.25	2020.25	6322.62	94.00	0.47	-0.46	-0.09
	13813.00	89.82	359.25	255.4	6485.65	618.63	6682.96	2020.96	6511.17	189.00	0.27	0.04	-0.27
	13908.00	89.78	359.42	258.1	6580.65	617.53	6683.29	2021.29	6605.92	95.00	0.18	-0.04	0.18
	14003.00	89.82	359.62	258.1	6675.64	616.73	6683.62	2021.62	6700.70	95.00	0.21	0.04	0.21
	14097.00	89.63	0.02	258.1	6769.64	616.44	6684.07	2022.07	6794.51	94.00	0.47	-0.20	0.43
	14192.00	90.25	359.78	258.1	6864.64	616.27	6684.17	2022.17	6889.32	95.00	0.70	0.65	-0.25
	14287.00	90.37	0.13	258.1	6959.64	616.20	6683.66	2021.66	6984.14	95.00	0.39	0.13	0.37
	14381.00	90.37	0.57	260.8	7053.64	616.77	6683.05	2021.05	7078.00	94.00	0.47	0.00	0.47
	14476.00	90.62	0.41	260.8	7148.63	617.58	6682.23	2020.23	7172.87	95.00	0.31	0.26	-0.17
	14571.00	90.22	0.15	260.8	7243.62	618.05	6681.53	2019.53	7267.72	95.00	0.50	-0.42	-0.27
	14665.00	90.03	1.26	260.8	7337.62	619.20	6681.33	2019.33	7361.61	94.00	1.20	-0.20	1.18
	14760.00	89.60	0.48	260.8	7432.60	620.65	6681.64	2019.64	7456.51	95.00	0.94	-0.45	-0.82
	14855.00	90.86	0.68	260.8	7527.60	621.61	6681.25	2019.25	7551.39	95.00	1.34	1.33	0.21
	14949.00	90.25	1.14	263.5	7621.58	623.10	6680.34	2018.34	7645.29	94.00	0.81	-0.65	0.49
	15044.00	90.03	1.54	263.5	7716.55	625.32	6680.11	2018.11	7740.23	95.00	0.48	-0.23	0.42
	15138.00	90.28	2.38	217.6	7810.50	628.54	6679.86	2017.86	7834.19	94.00	0.93	0.27	0.89
	15233.00	90.43	0.85	263.5	7905.45	631.21	6679.27	2017.27	7929.14	95.00	1.62	0.16	-1.61
	15328.00	90.34	1.94	263.5	8000.42	633.53	6678.63	2016.63	8024.07	95.00	1.15	-0.09	1.15
	15422.00	89.78	359.60	263.5	8094.41	634.79	6678.53	2016.53	8117.96	94.00	2.56	-0.60	-2.49
	15517.00	89.78	358.75	263.5	8189.40	633.42	6678.90	2016.90	8212.70	95.00	0.89	0.00	-0.89
	15612.00	90.00	358.68	266.2	8284.37	631.29	6679.08	2017.08	8307.37	95.00	0.24	0.23	-0.07
	15706.00	90.09	358.71	266.2	8378.35	629.15	6679.00	2017.00	8401.04	94.00	0.10	0.10	0.03
	15801.00	89.32	357.82	263.5	8473.30	626.27	6679.49	2017.49	8495.65	95.00	1.24	-0.81	-0.94
	15896.00	90.31	358.39	266.2	8568.25	623.13	6679.80	2017.80	8590.23	95.00	1.20	1.04	0.60
	15990.00	90.06	359.03	266.2	8662.22	621.02	6679.50	2017.50	8683.91	94.00	0.73	-0.27	0.68
	16085.00	90.03	359.36	269.0	8757.21	619.68	6679.42	2017.42	8778.65	95.00	0.35	-0.03	0.35
	16179.00	89.38	358.74	269.0	8851.20	618.12	6679.91	2017.91	8872.37	94.00	0.96	-0.69	-0.66
	16274.00	90.12	358.73	269.0	8946.17	616.03	6680.32	2018.32	8967.04	95.00	0.78	0.78	-0.01
	16368.00	89.82	358.59	269.0	9040.15	613.83	6680.37	2018.37	9060.71	94.00	0.35	-0.32	-0.15
	16463.00	89.69	358.68	271.7	9135.12	611.56	6680.78	2018.78	9155.38	95.00	0.17	-0.14	0.09
	16557.00	90.58	359.07	271.7	9229.10	609.72	6680.56	2018.56	9249.07	94.00	1.03	0.95	0.41
	16652.00	89.85	358.68	271.7	9324.08	607.85	6680.20	2018.20	9343.77	95.00	0.87	-0.77	-0.41
	16747.00	89.85	358.80	271.7	9419.06	605.77	6680.45	2018.45	9438.45	95.00	0.13	0.00	0.13
	16841.00	89.85	359.05	271.7	9513.04	604.00	6680.69	2018.69	9532.15	94.00	0.27	-0.00	0.27
	16936.00	89.69	359.58	274.4	9608.03	602.87	6681.07	2019.07	9626.90	95.00	0.58	-0.17	0.56
	17030.00	89.60	359.35	274.4	9702.02	601.99	6681.66	2019.66	9720.67	94.00	0.26	-0.10	-0.24
Projection	17072.00	89.60	359.35	N/A	9744.02	601.51	6681.95	2019.95	9762.56	42.00	0.00	-0.00	-0.00