

Bison Oil & Gas II, LLC

**WELD COUNTY, COLORADO (NAD 83)
HUNT 8-60 17B SWNE SEC. 17 T8N R60W
HUNT FED 8-60 17B-20-5**

Wellbore #1

Plan: Design #1

Standard Survey Report

31 March, 2021



Project: WELD COUNTY, COLORADO (NAD 83)
Site: HUNT 8-60 17B SWNE SEC. 17 T8N R60W
Well: HUNT FED 8-60 17B-20-5
Wellbore: Wellbore #1
Design: Design #1

ANNOTATIONS

MD	Inc	Azi	TVD	+N/-S	+E/-W	VSec	Departure	Annotation
800.0	0.00	0.00	800.0	0.0	0.0	0.0	0.0	Start Build 2.00
1709.3	18.19	96.40	1694.1	-15.9	142.2	39.4	143.1	Start 3524.1 hold at 1709.3 MD
5233.3	18.19	96.40	5042.1	-138.5	1235.2	341.9	1242.9	Start Drop -2.00
6142.6	0.00	0.00	5936.2	-154.4	1377.4	381.3	1386.0	Start Build 12.82
6844.4	90.00	180.00	6383.0	-601.2	1377.4	821.8	1832.8	Start DLS 0.00 TFO 90.07
14186.1	90.00	180.32	6383.0	-7942.8	1356.8	8057.8	9174.5	Start 100.2 hold at 14186.1 MD
14286.3	90.00	180.32	6383.0	-8043.1	1356.2	8156.6	9274.7	TD at 14286.3

PROPOSED LOCAL COORDINATES:

SHL: 2315 ft FNL & 2381 ft FEL Sec 17

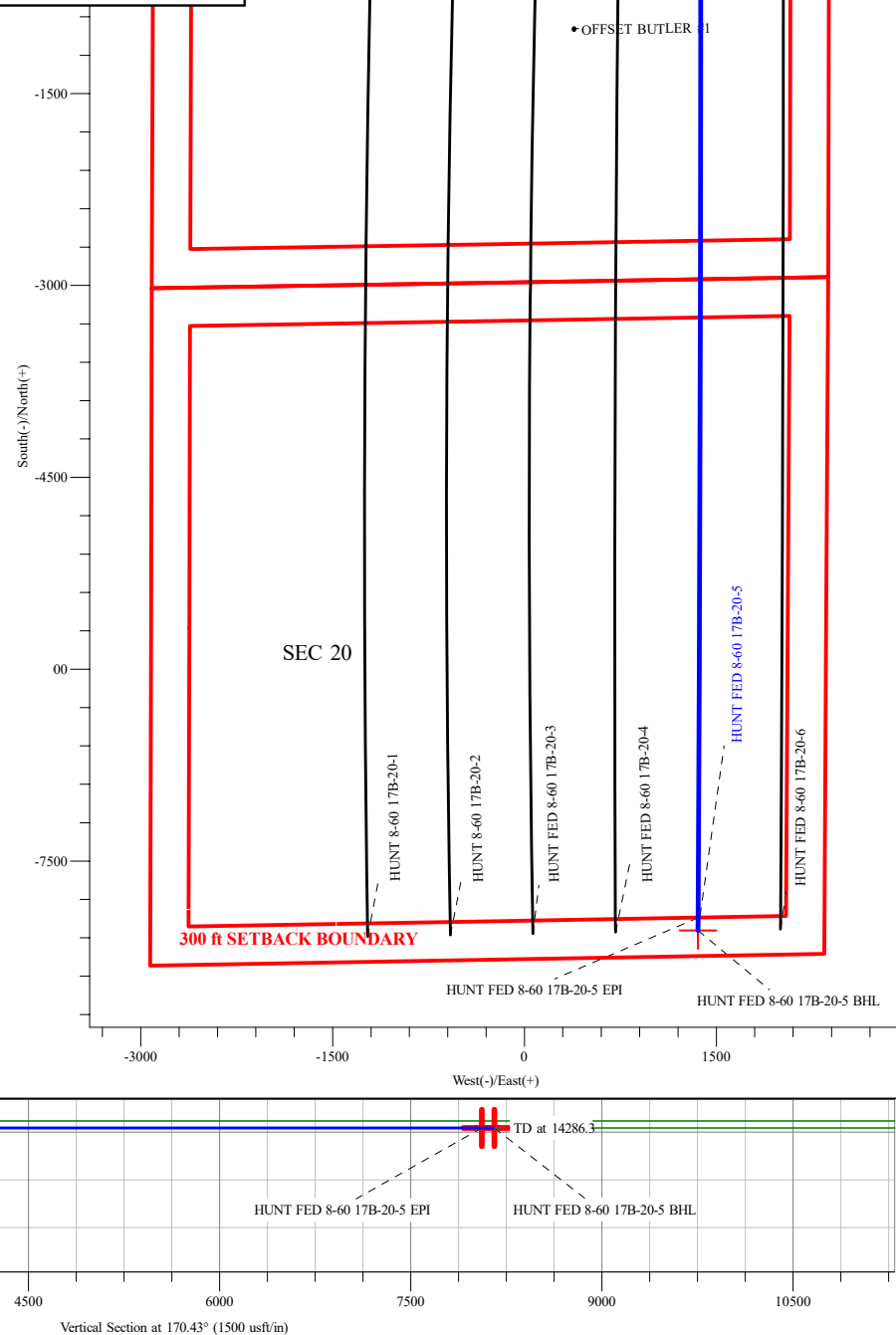
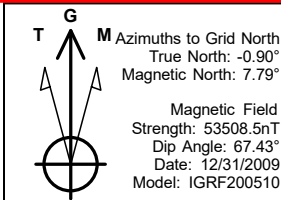
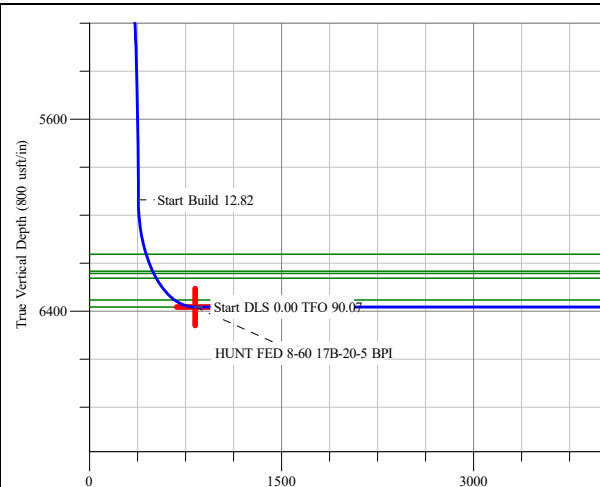
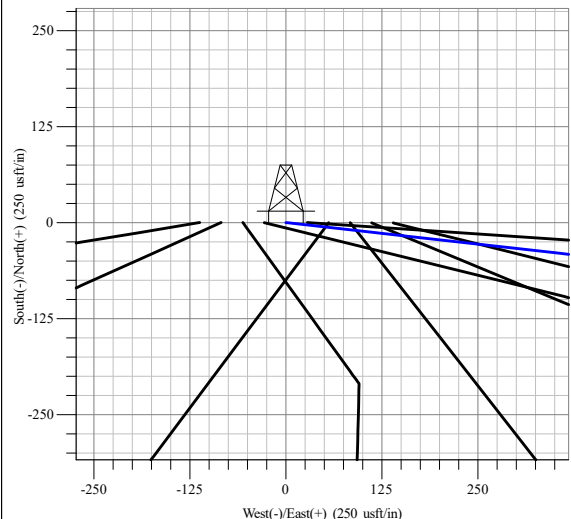
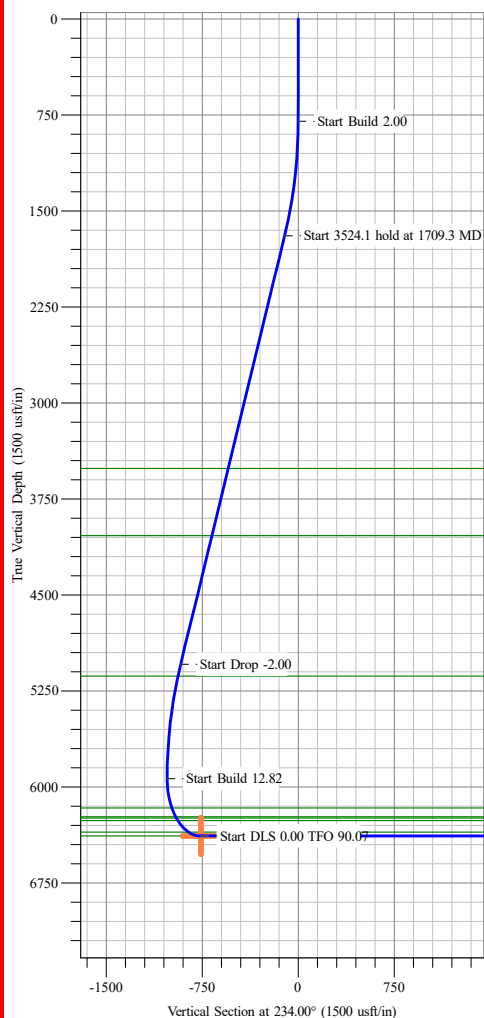
BPI : 2347 ft FSL & 1002 ft FEL Sec 17

EPI: 300 ft FSL & 988 ft FEL Sec 20

BHL: 200 ft FSL & 988 ft FEL Sec 20

WELLBORE TARGET DETAILS (LAT/LONG)

Name	TVD	+N/-S	+E/-W	Northing	Easting	Latitude	Longitude
HUNT FED 8-60 17B-20-5 BPI	6383.0	-604.4	1377.4	1486848.18	3385792.33	40° 39' 41.360 N 104° 6' 33.768 W	
HUNT FED 8-60 17B-20-5 EPI	6383.0	-7942.8	1356.8	1479509.91	3385771.69	40° 38' 28.860 N 104° 6' 35.528 W	
HUNT FED 8-60 17B-20-5 BHL	6383.0	-8043.0	1356.4	1479409.70	3385771.32	40° 38' 27.870 N 104° 6' 35.554 W	Point



Survey Report

Company:	Bison Oil & Gas II, LLC	Local Co-ordinate Reference:	Well HUNT FED 8-60 17B-20-5
Project:	WELD COUNTY, COLORADO (NAD 83)	TVD Reference:	GL @ 4938.8usft
Site:	HUNT 8-60 17B SWNE SEC. 17 T8N R60W	MD Reference:	GL @ 4938.8usft
Well:	HUNT FED 8-60 17B-20-5	North Reference:	Grid
Wellbore:	Wellbore #1	Survey Calculation Method:	Minimum Curvature
Design:	Design #1	Database:	EDM 5000.16 Single User Db

Project	WELD COUNTY, COLORADO (NAD 83),		
Map System:	US State Plane 1983	System Datum:	Mean Sea Level
Geo Datum:	North American Datum 1983		
Map Zone:	Colorado Northern Zone		Using geodetic scale factor

Site	HUNT 8-60 17B SWNE SEC. 17 T8N R60W		
Site Position:		Northing:	1,488,068.40 usft
From:	Lat/Long	Easting:	3,416,121.97 usft
Position Uncertainty:	0.0 usft	Slot Radius:	13-3/16 "
		Latitude:	40° 39' 48.532 N
		Longitude:	104° 0' 0.000 W

Well	HUNT FED 8-60 17B-20-5		
Well Position	+N/-S	0.0 usft	Northing: 1,487,452.60 usft
	+E/-W	0.0 usft	Easting: 3,384,414.95 usft
Position Uncertainty	0.0 usft	Wellhead Elevation:	usft
Grid Convergence:	0.90 °	Ground Level:	4,938.8 usft

Wellbore	Wellbore #1				
Magnetics	Model Name	Sample Date	Declination (°)	Dip Angle (°)	Field Strength (nT)
	IGRF200510	12/31/2009	8.69	67.43	53,508.47862514

Design	Design #1				
Audit Notes:					
Version:	Phase:	PROTOTYPE	Tie On Depth:	0.0	
Vertical Section:	Depth From (TVD) (usft)	+N/-S (usft)	+E/-W (usft)	Direction (°)	
	0.0	0.0	0.0	170.43	

Survey Tool Program	Date	3/31/2021			
From (usft)	To (usft)	Survey (Wellbore)	Tool Name	Description	
0.0	14,286.3	Design #1 (Wellbore #1)	MWD	Fixed:v2:standard declination	

Planned Survey										
Measured Depth (usft)	Inclination (°)	Azimuth (°)	Vertical Depth (usft)	+N/-S (usft)	+E/-W (usft)	Vertical Section (usft)	Dogleg Rate (°/100usft)	Build Rate (°/100usft)	Turn Rate (°/100usft)	
0.0	0.00	0.00	0.0	0.0	0.0	0.0	0.00	0.00	0.00	
100.0	0.00	0.00	100.0	0.0	0.0	0.0	0.00	0.00	0.00	
200.0	0.00	0.00	200.0	0.0	0.0	0.0	0.00	0.00	0.00	
300.0	0.00	0.00	300.0	0.0	0.0	0.0	0.00	0.00	0.00	
400.0	0.00	0.00	400.0	0.0	0.0	0.0	0.00	0.00	0.00	
500.0	0.00	0.00	500.0	0.0	0.0	0.0	0.00	0.00	0.00	
600.0	0.00	0.00	600.0	0.0	0.0	0.0	0.00	0.00	0.00	
700.0	0.00	0.00	700.0	0.0	0.0	0.0	0.00	0.00	0.00	
800.0	0.00	0.00	800.0	0.0	0.0	0.0	0.00	0.00	0.00	
Start Build 2.00										

Survey Report

Company:	Bison Oil & Gas II, LLC	Local Co-ordinate Reference:	Well HUNT FED 8-60 17B-20-5
Project:	WELD COUNTY, COLORADO (NAD 83)	TVD Reference:	GL @ 4938.8usft
Site:	HUNT 8-60 17B SWNE SEC. 17 T8N R60W	MD Reference:	GL @ 4938.8usft
Well:	HUNT FED 8-60 17B-20-5	North Reference:	Grid
Wellbore:	Wellbore #1	Survey Calculation Method:	Minimum Curvature
Design:	Design #1	Database:	EDM 5000.16 Single User Db

Planned Survey

Measured Depth (usft)	Inclination (°)	Azimuth (°)	Vertical Depth (usft)	+N/-S (usft)	+E/-W (usft)	Vertical Section (usft)	Dogleg Rate (°/100usft)	Build Rate (°/100usft)	Turn Rate (°/100usft)
900.0	2.00	96.40	900.0	-0.2	1.7	0.5	2.00	2.00	0.00
1,000.0	4.00	96.40	999.8	-0.8	6.9	1.9	2.00	2.00	0.00
1,100.0	6.00	96.40	1,099.4	-1.7	15.6	4.3	2.00	2.00	0.00
1,200.0	8.00	96.40	1,198.7	-3.1	27.7	7.7	2.00	2.00	0.00
1,300.0	10.00	96.40	1,297.5	-4.8	43.3	12.0	2.00	2.00	0.00
1,400.0	12.00	96.40	1,395.6	-7.0	62.2	17.2	2.00	2.00	0.00
1,500.0	14.00	96.40	1,493.1	-9.5	84.6	23.4	2.00	2.00	0.00
1,600.0	16.00	96.40	1,589.6	-12.4	110.3	30.5	2.00	2.00	0.00
1,700.0	18.00	96.40	1,685.3	-15.6	139.3	38.6	2.00	2.00	0.00
1,709.3	18.19	96.40	1,694.1	-15.9	142.2	39.4	2.00	2.00	0.00
Start 3524.1 hold at 1709.3 MD									
1,800.0	18.19	96.40	1,780.3	-19.1	170.3	47.2	0.00	0.00	0.00
1,900.0	18.19	96.40	1,875.3	-22.6	201.4	55.7	0.00	0.00	0.00
2,000.0	18.19	96.40	1,970.3	-26.0	232.4	64.3	0.00	0.00	0.00
2,100.0	18.19	96.40	2,065.3	-29.5	263.4	72.9	0.00	0.00	0.00
2,200.0	18.19	96.40	2,160.3	-33.0	294.4	81.5	0.00	0.00	0.00
2,300.0	18.19	96.40	2,255.3	-36.5	325.4	90.1	0.00	0.00	0.00
2,400.0	18.19	96.40	2,350.3	-40.0	356.4	98.7	0.00	0.00	0.00
2,500.0	18.19	96.40	2,445.3	-43.4	387.4	107.2	0.00	0.00	0.00
2,600.0	18.19	96.40	2,540.3	-46.9	418.5	115.8	0.00	0.00	0.00
2,700.0	18.19	96.40	2,635.3	-50.4	449.5	124.4	0.00	0.00	0.00
2,800.0	18.19	96.40	2,730.3	-53.9	480.5	133.0	0.00	0.00	0.00
2,900.0	18.19	96.40	2,825.3	-57.3	511.5	141.6	0.00	0.00	0.00
3,000.0	18.19	96.40	2,920.3	-60.8	542.5	150.2	0.00	0.00	0.00
3,100.0	18.19	96.40	3,015.3	-64.3	573.5	158.8	0.00	0.00	0.00
3,200.0	18.19	96.40	3,110.3	-67.8	604.6	167.3	0.00	0.00	0.00
3,300.0	18.19	96.40	3,205.3	-71.2	635.6	175.9	0.00	0.00	0.00
3,400.0	18.19	96.40	3,300.4	-74.7	666.6	184.5	0.00	0.00	0.00
3,500.0	18.19	96.40	3,395.4	-78.2	697.6	193.1	0.00	0.00	0.00
3,600.0	18.19	96.40	3,490.4	-81.7	728.6	201.7	0.00	0.00	0.00
3,700.0	18.19	96.40	3,585.4	-85.2	759.6	210.3	0.00	0.00	0.00
3,800.0	18.19	96.40	3,680.4	-88.6	790.6	218.9	0.00	0.00	0.00
3,900.0	18.19	96.40	3,775.4	-92.1	821.7	227.4	0.00	0.00	0.00
4,000.0	18.19	96.40	3,870.4	-95.6	852.7	236.0	0.00	0.00	0.00
4,100.0	18.19	96.40	3,965.4	-99.1	883.7	244.6	0.00	0.00	0.00
4,200.0	18.19	96.40	4,060.4	-102.5	914.7	253.2	0.00	0.00	0.00
4,300.0	18.19	96.40	4,155.4	-106.0	945.7	261.8	0.00	0.00	0.00
4,400.0	18.19	96.40	4,250.4	-109.5	976.7	270.4	0.00	0.00	0.00
4,500.0	18.19	96.40	4,345.4	-113.0	1,007.7	279.0	0.00	0.00	0.00
4,600.0	18.19	96.40	4,440.4	-116.4	1,038.8	287.5	0.00	0.00	0.00
4,700.0	18.19	96.40	4,535.4	-119.9	1,069.8	296.1	0.00	0.00	0.00
4,800.0	18.19	96.40	4,630.4	-123.4	1,100.8	304.7	0.00	0.00	0.00
4,900.0	18.19	96.40	4,725.4	-126.9	1,131.8	313.3	0.00	0.00	0.00

Survey Report

Company:	Bison Oil & Gas II, LLC	Local Co-ordinate Reference:	Well HUNT FED 8-60 17B-20-5
Project:	WELD COUNTY, COLORADO (NAD 83)	TVD Reference:	GL @ 4938.8usft
Site:	HUNT 8-60 17B SWNE SEC. 17 T8N R60W	MD Reference:	GL @ 4938.8usft
Well:	HUNT FED 8-60 17B-20-5	North Reference:	Grid
Wellbore:	Wellbore #1	Survey Calculation Method:	Minimum Curvature
Design:	Design #1	Database:	EDM 5000.16 Single User Db

Planned Survey

Measured Depth (usft)	Inclination (°)	Azimuth (°)	Vertical Depth (usft)	+N/-S (usft)	+E/-W (usft)	Vertical Section (usft)	Dogleg Rate (°/100usft)	Build Rate (°/100usft)	Turn Rate (°/100usft)
5,000.0	18.19	96.40	4,820.4	-130.3	1,162.8	321.9	0.00	0.00	0.00
5,100.0	18.19	96.40	4,915.4	-133.8	1,193.8	330.5	0.00	0.00	0.00
5,200.0	18.19	96.40	5,010.4	-137.3	1,224.9	339.0	0.00	0.00	0.00
5,233.3	18.19	96.40	5,042.1	-138.5	1,235.2	341.9	0.00	0.00	0.00
Start Drop -2.00									
5,300.0	16.85	96.40	5,105.7	-140.7	1,255.1	347.4	2.00	-2.00	0.00
5,400.0	14.85	96.40	5,201.9	-143.7	1,282.3	354.9	2.00	-2.00	0.00
5,500.0	12.85	96.40	5,299.0	-146.4	1,306.1	361.5	2.00	-2.00	0.00
5,600.0	10.85	96.40	5,396.8	-148.7	1,326.5	367.2	2.00	-2.00	0.00
5,700.0	8.85	96.40	5,495.3	-150.6	1,343.5	371.9	2.00	-2.00	0.00
5,800.0	6.85	96.40	5,594.4	-152.1	1,357.1	375.6	2.00	-2.00	0.00
5,900.0	4.85	96.40	5,693.9	-153.3	1,367.2	378.4	2.00	-2.00	0.00
6,000.0	2.85	96.40	5,793.6	-154.0	1,373.9	380.3	2.00	-2.00	0.00
6,100.0	0.85	96.40	5,893.6	-154.4	1,377.1	381.2	2.00	-2.00	0.00
6,142.6	0.00	0.00	5,936.2	-154.4	1,377.4	381.3	2.00	-2.00	0.00
Start Build 12.82									
6,200.0	7.36	180.00	5,993.4	-158.1	1,377.4	384.9	12.82	12.82	0.00
6,300.0	20.18	180.00	6,090.3	-181.8	1,377.4	408.3	12.82	12.82	0.00
6,400.0	33.01	180.00	6,179.6	-226.5	1,377.4	452.4	12.82	12.82	0.00
6,500.0	45.83	180.00	6,256.7	-289.9	1,377.4	514.9	12.82	12.82	0.00
6,600.0	58.66	180.00	6,317.8	-368.8	1,377.4	592.7	12.82	12.82	0.00
6,700.0	71.48	180.00	6,359.8	-459.3	1,377.4	681.9	12.82	12.82	0.00
6,800.0	84.30	180.00	6,380.8	-556.8	1,377.4	778.1	12.82	12.82	0.00
6,844.4	90.00	180.00	6,383.0	-601.2	1,377.4	821.8	12.82	12.82	0.00
Start DLS 0.00 TFO 90.07									
6,900.0	90.00	180.00	6,383.0	-656.8	1,377.4	876.6	0.00	0.00	0.00
7,000.0	90.00	180.00	6,383.0	-756.8	1,377.4	975.3	0.00	0.00	0.00
7,100.0	90.00	180.01	6,383.0	-856.8	1,377.4	1,073.9	0.00	0.00	0.00
7,200.0	90.00	180.01	6,383.0	-956.8	1,377.3	1,172.5	0.00	0.00	0.00
7,300.0	90.00	180.02	6,383.0	-1,056.8	1,377.3	1,271.1	0.00	0.00	0.00
7,400.0	90.00	180.02	6,383.0	-1,156.8	1,377.3	1,369.7	0.00	0.00	0.00
7,500.0	90.00	180.02	6,383.0	-1,256.8	1,377.2	1,468.3	0.00	0.00	0.00
7,600.0	90.00	180.03	6,383.0	-1,356.8	1,377.2	1,566.9	0.00	0.00	0.00
7,700.0	90.00	180.03	6,383.0	-1,456.8	1,377.1	1,665.5	0.00	0.00	0.00
7,800.0	90.00	180.04	6,383.0	-1,556.8	1,377.0	1,764.1	0.00	0.00	0.00
7,900.0	90.00	180.04	6,383.0	-1,656.8	1,377.0	1,862.7	0.00	0.00	0.00
8,000.0	90.00	180.05	6,383.0	-1,756.8	1,376.9	1,961.2	0.00	0.00	0.00
8,100.0	90.00	180.05	6,383.0	-1,856.8	1,376.8	2,059.8	0.00	0.00	0.00
8,200.0	90.00	180.06	6,383.0	-1,956.8	1,376.7	2,158.4	0.00	0.00	0.00
8,300.0	90.00	180.06	6,383.0	-2,056.8	1,376.6	2,257.0	0.00	0.00	0.00
8,400.0	90.00	180.06	6,383.0	-2,156.8	1,376.5	2,355.6	0.00	0.00	0.00
8,500.0	90.00	180.07	6,383.0	-2,256.8	1,376.3	2,454.2	0.00	0.00	0.00
8,600.0	90.00	180.07	6,383.0	-2,356.8	1,376.2	2,552.8	0.00	0.00	0.00
8,700.0	90.00	180.08	6,383.0	-2,456.8	1,376.1	2,651.4	0.00	0.00	0.00

Survey Report

Company:	Bison Oil & Gas II, LLC	Local Co-ordinate Reference:	Well HUNT FED 8-60 17B-20-5
Project:	WELD COUNTY, COLORADO (NAD 83)	TVD Reference:	GL @ 4938.8usft
Site:	HUNT 8-60 17B SWNE SEC. 17 T8N R60W	MD Reference:	GL @ 4938.8usft
Well:	HUNT FED 8-60 17B-20-5	North Reference:	Grid
Wellbore:	Wellbore #1	Survey Calculation Method:	Minimum Curvature
Design:	Design #1	Database:	EDM 5000.16 Single User Db

Planned Survey

Measured Depth (usft)	Inclination (°)	Azimuth (°)	Vertical Depth (usft)	+N/-S (usft)	+E/-W (usft)	Vertical Section (usft)	Dogleg Rate (°/100usft)	Build Rate (°/100usft)	Turn Rate (°/100usft)
8,800.0	90.00	180.08	6,383.0	-2,556.8	1,375.9	2,749.9	0.00	0.00	0.00
8,900.0	90.00	180.09	6,383.0	-2,656.8	1,375.8	2,848.5	0.00	0.00	0.00
9,000.0	90.00	180.09	6,383.0	-2,756.8	1,375.6	2,947.1	0.00	0.00	0.00
9,100.0	90.00	180.09	6,383.0	-2,856.8	1,375.4	3,045.7	0.00	0.00	0.00
9,200.0	90.00	180.10	6,383.0	-2,956.8	1,375.3	3,144.3	0.00	0.00	0.00
9,300.0	90.00	180.10	6,383.0	-3,056.8	1,375.1	3,242.8	0.00	0.00	0.00
9,400.0	90.00	180.11	6,383.0	-3,156.8	1,374.9	3,341.4	0.00	0.00	0.00
9,500.0	90.00	180.11	6,383.0	-3,256.8	1,374.7	3,440.0	0.00	0.00	0.00
9,600.0	90.00	180.12	6,383.0	-3,356.8	1,374.5	3,538.6	0.00	0.00	0.00
9,700.0	90.00	180.12	6,383.0	-3,456.8	1,374.3	3,637.1	0.00	0.00	0.00
9,800.0	90.00	180.13	6,383.0	-3,556.8	1,374.1	3,735.7	0.00	0.00	0.00
9,900.0	90.00	180.13	6,383.0	-3,656.8	1,373.8	3,834.3	0.00	0.00	0.00
10,000.0	90.00	180.13	6,383.0	-3,756.8	1,373.6	3,932.8	0.00	0.00	0.00
10,100.0	90.00	180.14	6,383.0	-3,856.8	1,373.3	4,031.4	0.00	0.00	0.00
10,200.0	90.00	180.14	6,383.0	-3,956.8	1,373.1	4,130.0	0.00	0.00	0.00
10,300.0	90.00	180.15	6,383.0	-4,056.8	1,372.8	4,228.5	0.00	0.00	0.00
10,400.0	90.00	180.15	6,383.0	-4,156.8	1,372.6	4,327.1	0.00	0.00	0.00
10,500.0	90.00	180.16	6,383.0	-4,256.8	1,372.3	4,425.7	0.00	0.00	0.00
10,600.0	90.00	180.16	6,383.0	-4,356.8	1,372.0	4,524.2	0.00	0.00	0.00
10,700.0	90.00	180.16	6,383.0	-4,456.8	1,371.7	4,622.8	0.00	0.00	0.00
10,800.0	90.00	180.17	6,383.0	-4,556.8	1,371.4	4,721.3	0.00	0.00	0.00
10,900.0	90.00	180.17	6,383.0	-4,656.8	1,371.1	4,819.9	0.00	0.00	0.00
11,000.0	90.00	180.18	6,383.0	-4,756.8	1,370.8	4,918.5	0.00	0.00	0.00
11,100.0	90.00	180.18	6,383.0	-4,856.8	1,370.5	5,017.0	0.00	0.00	0.00
11,200.0	90.00	180.19	6,383.0	-4,956.7	1,370.1	5,115.6	0.00	0.00	0.00
11,300.0	90.00	180.19	6,383.0	-5,056.7	1,369.8	5,214.1	0.00	0.00	0.00
11,400.0	90.00	180.20	6,383.0	-5,156.7	1,369.5	5,312.7	0.00	0.00	0.00
11,500.0	90.00	180.20	6,383.0	-5,256.7	1,369.1	5,411.2	0.00	0.00	0.00
11,600.0	90.00	180.20	6,383.0	-5,356.7	1,368.7	5,509.8	0.00	0.00	0.00
11,700.0	90.00	180.21	6,383.0	-5,456.7	1,368.4	5,608.3	0.00	0.00	0.00
11,800.0	90.00	180.21	6,383.0	-5,556.7	1,368.0	5,706.9	0.00	0.00	0.00
11,900.0	90.00	180.22	6,383.0	-5,656.7	1,367.6	5,805.4	0.00	0.00	0.00
12,000.0	90.00	180.22	6,383.0	-5,756.7	1,367.2	5,903.9	0.00	0.00	0.00
12,100.0	90.00	180.23	6,383.0	-5,856.7	1,366.8	6,002.5	0.00	0.00	0.00
12,200.0	90.00	180.23	6,383.0	-5,956.7	1,366.4	6,101.0	0.00	0.00	0.00
12,300.0	90.00	180.23	6,383.0	-6,056.7	1,366.0	6,199.6	0.00	0.00	0.00
12,400.0	90.00	180.24	6,383.0	-6,156.7	1,365.6	6,298.1	0.00	0.00	0.00
12,500.0	90.00	180.24	6,383.0	-6,256.7	1,365.2	6,396.6	0.00	0.00	0.00
12,600.0	90.00	180.25	6,383.0	-6,356.7	1,364.7	6,495.2	0.00	0.00	0.00
12,700.0	90.00	180.25	6,383.0	-6,456.7	1,364.3	6,593.7	0.00	0.00	0.00
12,800.0	90.00	180.26	6,383.0	-6,556.7	1,363.8	6,692.2	0.00	0.00	0.00
12,900.0	90.00	180.26	6,383.0	-6,656.7	1,363.4	6,790.8	0.00	0.00	0.00
13,000.0	90.00	180.27	6,383.0	-6,756.7	1,362.9	6,889.3	0.00	0.00	0.00

Survey Report

Company:	Bison Oil & Gas II, LLC	Local Co-ordinate Reference:	Well HUNT FED 8-60 17B-20-5
Project:	WELD COUNTY, COLORADO (NAD 83)	TVD Reference:	GL @ 4938.8usft
Site:	HUNT 8-60 17B SWNE SEC. 17 T8N R60W	MD Reference:	GL @ 4938.8usft
Well:	HUNT FED 8-60 17B-20-5	North Reference:	Grid
Wellbore:	Wellbore #1	Survey Calculation Method:	Minimum Curvature
Design:	Design #1	Database:	EDM 5000.16 Single User Db

Planned Survey

Measured Depth (usft)	Inclination (°)	Azimuth (°)	Vertical Depth (usft)	+N/-S (usft)	+E/-W (usft)	Vertical Section (usft)	Dogleg Rate (°/100usft)	Build Rate (°/100usft)	Turn Rate (°/100usft)
13,100.0	90.00	180.27	6,383.0	-6,856.7	1,362.4	6,987.8	0.00	0.00	0.00
13,200.0	90.00	180.27	6,383.0	-6,956.7	1,361.9	7,086.3	0.00	0.00	0.00
13,300.0	90.00	180.28	6,383.0	-7,056.7	1,361.4	7,184.9	0.00	0.00	0.00
13,400.0	90.00	180.28	6,383.0	-7,156.7	1,360.9	7,283.4	0.00	0.00	0.00
13,500.0	90.00	180.29	6,383.0	-7,256.7	1,360.4	7,381.9	0.00	0.00	0.00
13,600.0	90.00	180.29	6,383.0	-7,356.7	1,359.9	7,480.4	0.00	0.00	0.00
13,700.0	90.00	180.30	6,383.0	-7,456.7	1,359.4	7,579.0	0.00	0.00	0.00
13,800.0	90.00	180.30	6,383.0	-7,556.7	1,358.9	7,677.5	0.00	0.00	0.00
13,900.0	90.00	180.31	6,383.0	-7,656.7	1,358.3	7,776.0	0.00	0.00	0.00
14,000.0	90.00	180.31	6,383.0	-7,756.7	1,357.8	7,874.5	0.00	0.00	0.00
14,100.0	90.00	180.31	6,383.0	-7,856.7	1,357.2	7,973.0	0.00	0.00	0.00
14,186.1	90.00	180.32	6,383.0	-7,942.8	1,356.8	8,057.8	0.01	0.00	0.01
Start 100.2 hold at 14186.1 MD									
14,200.0	90.00	180.32	6,383.0	-7,956.7	1,356.7	8,071.5	0.03	0.00	0.03
14,286.3	90.00	180.32	6,383.0	-8,043.1	1,356.2	8,156.6	0.00	0.00	0.00
TD at 14286.3									

Design Targets

Target Name - hit/miss target - Shape	Dip Angle (°)	Dip Dir. (°)	TVD (usft)	+N/-S (usft)	+E/-W (usft)	Northing (usft)	Easting (usft)	Latitude	Longitude
HUNT FED 8-60 17B- - plan hits target center - Point	0.00	359.10	6,383.0	-7,942.8	1,356.8	1,479,509.91	3,385,771.69	40° 38' 28.860 N	104° 6' 35.528 W
HUNT FED 8-60 17B- - plan hits target center - Point	0.00	359.10	6,383.0	-604.4	1,377.4	1,486,848.19	3,385,792.32	40° 39' 41.360 N	104° 6' 33.768 W
HUNT FED 8-60 17B- - plan misses target center by 0.2usft at 14286.3usft MD (6383.0 TVD, -8043.0 N, 1356.2 E) - Point	0.00	359.10	6,383.0	-8,043.0	1,356.4	1,479,409.70	3,385,771.32	40° 38' 27.870 N	104° 6' 35.554 W

Plan Annotations

Measured Depth (usft)	Vertical Depth (usft)	Local Coordinates		Comment
		+N/-S (usft)	+E/-W (usft)	
800	800	0	0	Start Build 2.00
1709	1694	-16	142	Start 3524.1 hold at 1709.3 MD
5233	5042	-138	1235	Start Drop -2.00
6143	5936	-154	1377	Start Build 12.82
6844	6383	-601	1377	Start DLS 0.00 TFO 90.07
14,186	6383	-7943	1357	Start 100.2 hold at 14186.1 MD
14,286	6383	-8043	1356	TD at 14286.3