

Bison Oil & Gas II, LLC

**WELD COUNTY, COLORADO (NAD 83)
HUNT 8-60 17B SWNE SEC. 17 T8N R60W
HUNT FED 8-60 17B-20-4**

Wellbore #1

Plan: Design #1

Standard Survey Report

31 March, 2021



Project: WELD COUNTY, COLORADO (NAD 83)
Site: HUNT 8-60 17B SWNE SEC. 17 T8N R60W
Well: HUNT FED 8-60 17B-20-4
Wellbore: Wellbore #1
Design: Design #1

ANNOTATIONS

MD	Inc	Azi	TVD	+N/-S	+E/-W	VSec	Departure	Annotation
800.0	0.00	0.00	800.0	0.0	0.0	0.0	0.0	Start Build 2.00
1269.1	9.38	103.83	1267.0	-9.2	37.2	12.5	38.3	Start 4357.2 hold at 1269.1 MD
5626.3	9.38	103.83	5565.9	-178.9	726.9	244.6	748.6	Start Drop -2.00
6095.4	0.00	0.00	6032.9	-188.1	764.1	257.1	786.9	Start Build 13.48
6763.1	90.00	180.59	6458.0	-613.2	759.7	680.0	1212.0	Start DLS 0.01 TFO -90.01
14104.4	90.00	179.73	6458.0	-7954.3	738.8	7988.6	8553.2	Start 100.2 hold at 14104.4 MD
14204.5	90.00	179.73	6458.0	-8054.5	739.3	8088.3	8653.4	TD at 14204.5

PROPOSED LOCAL COORDINATES:

SHL: 2314 ft FNL & 2409 ft FEL Sec 17

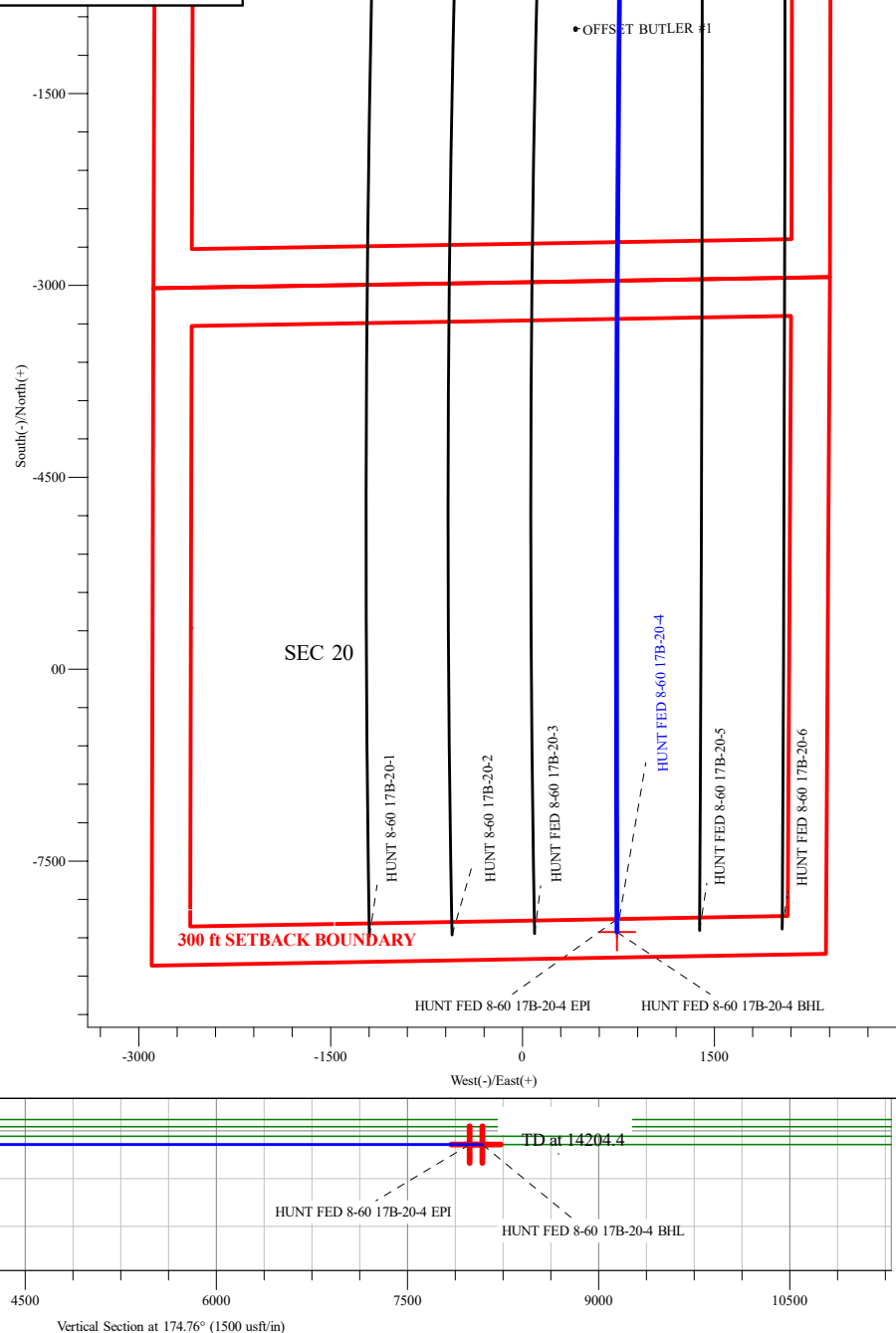
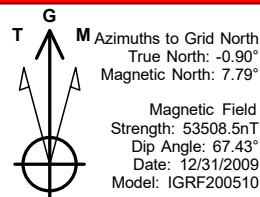
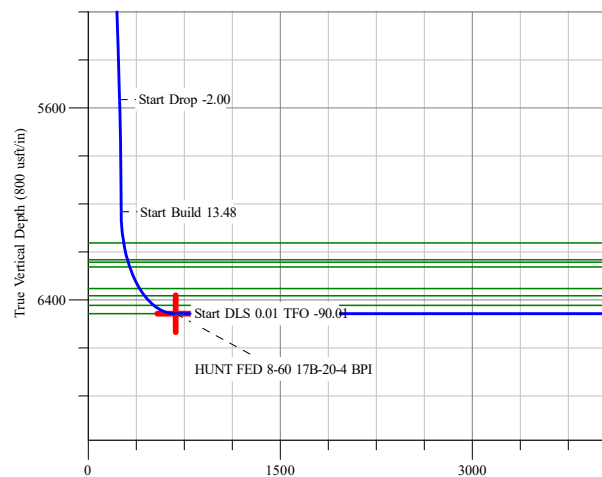
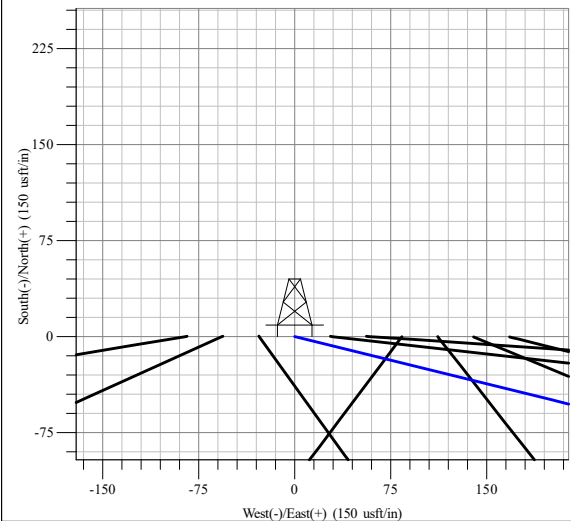
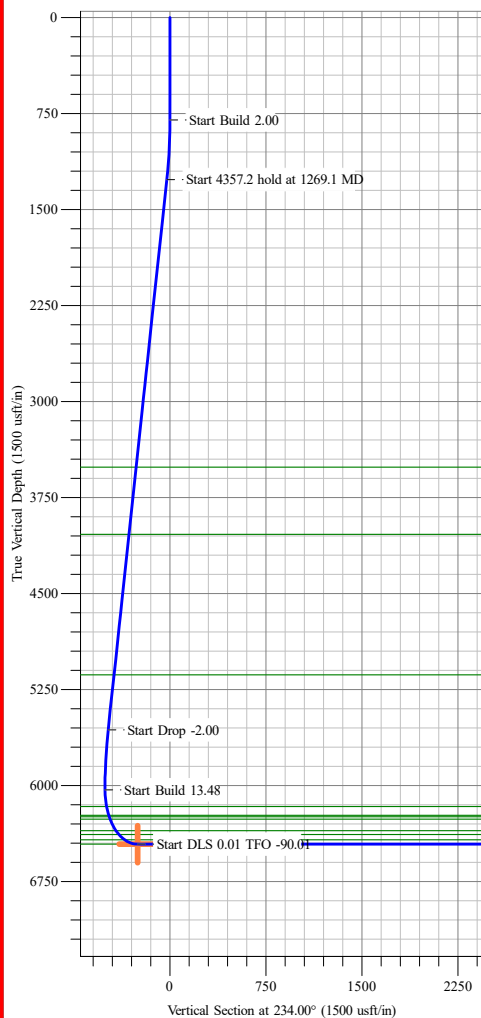
BPI : 2347 ft FSL & 1648 ft FEL Sec 17

EPI: 300 ft FSL & 1634 ft FEL Sec 20

BHL: 200 ft FSL & 1634 ft FEL Sec 20

WELLBORE TARGET DETAILS (LAT/LONG)

Name	TVD	+N/-S	+E/-W	Northing	Easting	Latitude	Longitude
HUNT FED 8-60 17B-20-4 BPI	6458.0	-616.3	759.6	1486836.24	3385146.56	40° 39' 41.342 N 104° 6' 42.149 W	
HUNT FED 8-60 17B-20-4 EPI	6458.0	-7954.3	738.8	1479498.33	3385125.73	40° 38' 28.846 N 104° 6' 43.909 W	
HUNT FED 8-60 17B-20-4 BHL	6458.0	-8054.5	738.7	1479398.13	3385125.63	40° 38' 27.856 N 104° 6' 43.931 W	Point



Survey Report

Company:	Bison Oil & Gas II, LLC	Local Co-ordinate Reference:	Well HUNT FED 8-60 17B-20-4
Project:	WELD COUNTY, COLORADO (NAD 83)	TVD Reference:	GL @ 4938.5usft
Site:	HUNT 8-60 17B SWNE SEC. 17 T8N R60W	MD Reference:	GL @ 4938.5usft
Well:	HUNT FED 8-60 17B-20-4	North Reference:	Grid
Wellbore:	Wellbore #1	Survey Calculation Method:	Minimum Curvature
Design:	Design #1	Database:	EDM 5000.16 Single User Db

Project	WELD COUNTY, COLORADO (NAD 83),		
Map System:	US State Plane 1983	System Datum:	Mean Sea Level
Geo Datum:	North American Datum 1983		
Map Zone:	Colorado Northern Zone		Using geodetic scale factor

Site	HUNT 8-60 17B SWNE SEC. 17 T8N R60W		
Site Position:		Northing:	1,488,068.40 usft
From:	Lat/Long	Easting:	3,416,121.97 usft
Position Uncertainty:	0.0 usft	Slot Radius:	13-3/16 "
		Latitude:	40° 39' 48.532 N
		Longitude:	104° 0' 0.000 W

Well	HUNT FED 8-60 17B-20-4					
Well Position	+N/-S	0.0 usft	Northing:	1,487,452.52 usft	Latitude:	40° 39' 47.549 N
	+E/-W	0.0 usft	Easting:	3,384,386.93 usft	Longitude:	104° 6' 51.880 W
Position Uncertainty		0.0 usft	Wellhead Elevation:	usft	Ground Level:	4,938.5 usft
Grid Convergence:		0.90 °				

Wellbore	Wellbore #1				
Magnetics	Model Name	Sample Date	Declination (°)	Dip Angle (°)	Field Strength (nT)
	IGRF200510	12/31/2009	8.69	67.43	53,508.47135359

Design	Design #1				
Audit Notes:					
Version:	Phase:	PROTOTYPE	Tie On Depth:	0.0	
Vertical Section:	Depth From (TVD) (usft)	+N/-S (usft)	+E/-W (usft)	Direction (°)	
	0.0	0.0	0.0	174.76	

Survey Tool Program	Date	3/31/2021			
From (usft)	To (usft)	Survey (Wellbore)	Tool Name	Description	
0.0	14,204.0	Design #1 (Wellbore #1)	MWD	Fixed:v2:standard declination	

Planned Survey										
Measured Depth (usft)	Inclination (°)	Azimuth (°)	Vertical Depth (usft)	+N/-S (usft)	+E/-W (usft)	Vertical Section (usft)	Dogleg Rate (°/100usft)	Build Rate (°/100usft)	Turn Rate (°/100usft)	
0.0	0.00	0.00	0.0	0.0	0.0	0.0	0.00	0.00	0.00	
100.0	0.00	0.00	100.0	0.0	0.0	0.0	0.00	0.00	0.00	
200.0	0.00	0.00	200.0	0.0	0.0	0.0	0.00	0.00	0.00	
300.0	0.00	0.00	300.0	0.0	0.0	0.0	0.00	0.00	0.00	
400.0	0.00	0.00	400.0	0.0	0.0	0.0	0.00	0.00	0.00	
500.0	0.00	0.00	500.0	0.0	0.0	0.0	0.00	0.00	0.00	
600.0	0.00	0.00	600.0	0.0	0.0	0.0	0.00	0.00	0.00	
700.0	0.00	0.00	700.0	0.0	0.0	0.0	0.00	0.00	0.00	
800.0	0.00	0.00	800.0	0.0	0.0	0.0	0.00	0.00	0.00	
Start Build 2.00										

Survey Report

Company:	Bison Oil & Gas II, LLC	Local Co-ordinate Reference:	Well HUNT FED 8-60 17B-20-4
Project:	WELD COUNTY, COLORADO (NAD 83)	TVD Reference:	GL @ 4938.5usft
Site:	HUNT 8-60 17B SWNE SEC. 17 T8N R60W	MD Reference:	GL @ 4938.5usft
Well:	HUNT FED 8-60 17B-20-4	North Reference:	Grid
Wellbore:	Wellbore #1	Survey Calculation Method:	Minimum Curvature
Design:	Design #1	Database:	EDM 5000.16 Single User Db

Planned Survey										
Measured Depth (usft)	Inclination (°)	Azimuth (°)	Vertical Depth (usft)	+N/-S (usft)	+E/-W (usft)	Vertical Section (usft)	Dogleg Rate (°/100usft)	Build Rate (°/100usft)	Turn Rate (°/100usft)	
900.0	2.00	103.83	900.0	-0.4	1.7	0.6	2.00	2.00	0.00	
1,000.0	4.00	103.83	999.8	-1.7	6.8	2.3	2.00	2.00	0.00	
1,100.0	6.00	103.83	1,099.4	-3.8	15.2	5.1	2.00	2.00	0.00	
1,200.0	8.00	103.83	1,198.7	-6.7	27.1	9.1	2.00	2.00	0.00	
1,269.1	9.38	103.83	1,267.0	-9.2	37.2	12.5	2.00	2.00	0.00	
Start 4357.2 hold at 1269.1 MD										
1,300.0	9.38	103.83	1,297.5	-10.4	42.1	14.2	0.00	0.00	0.00	
1,400.0	9.38	103.83	1,396.2	-14.3	57.9	19.5	0.00	0.00	0.00	
1,500.0	9.38	103.83	1,494.8	-18.2	73.8	24.8	0.00	0.00	0.00	
1,600.0	9.38	103.83	1,593.5	-22.1	89.6	30.1	0.00	0.00	0.00	
1,700.0	9.38	103.83	1,692.1	-26.0	105.4	35.5	0.00	0.00	0.00	
1,800.0	9.38	103.83	1,790.8	-29.8	121.2	40.8	0.00	0.00	0.00	
1,900.0	9.38	103.83	1,889.5	-33.7	137.1	46.1	0.00	0.00	0.00	
2,000.0	9.38	103.83	1,988.1	-37.6	152.9	51.5	0.00	0.00	0.00	
2,100.0	9.38	103.83	2,086.8	-41.5	168.7	56.8	0.00	0.00	0.00	
2,200.0	9.38	103.83	2,185.5	-45.4	184.6	62.1	0.00	0.00	0.00	
2,300.0	9.38	103.83	2,284.1	-49.3	200.4	67.4	0.00	0.00	0.00	
2,400.0	9.38	103.83	2,382.8	-53.2	216.2	72.8	0.00	0.00	0.00	
2,500.0	9.38	103.83	2,481.4	-57.1	232.0	78.1	0.00	0.00	0.00	
2,600.0	9.38	103.83	2,580.1	-61.0	247.9	83.4	0.00	0.00	0.00	
2,700.0	9.38	103.83	2,678.8	-64.9	263.7	88.7	0.00	0.00	0.00	
2,800.0	9.38	103.83	2,777.4	-68.8	279.5	94.1	0.00	0.00	0.00	
2,900.0	9.38	103.83	2,876.1	-72.7	295.3	99.4	0.00	0.00	0.00	
3,000.0	9.38	103.83	2,974.7	-76.6	311.2	104.7	0.00	0.00	0.00	
3,100.0	9.38	103.83	3,073.4	-80.5	327.0	110.1	0.00	0.00	0.00	
3,200.0	9.38	103.83	3,172.1	-84.4	342.8	115.4	0.00	0.00	0.00	
3,300.0	9.38	103.83	3,270.7	-88.3	358.7	120.7	0.00	0.00	0.00	
3,400.0	9.38	103.83	3,369.4	-92.2	374.5	126.0	0.00	0.00	0.00	
3,500.0	9.38	103.83	3,468.1	-96.1	390.3	131.4	0.00	0.00	0.00	
3,600.0	9.38	103.83	3,566.7	-100.0	406.1	136.7	0.00	0.00	0.00	
3,700.0	9.38	103.83	3,665.4	-103.9	422.0	142.0	0.00	0.00	0.00	
3,800.0	9.38	103.83	3,764.0	-107.8	437.8	147.3	0.00	0.00	0.00	
3,900.0	9.38	103.83	3,862.7	-111.7	453.6	152.7	0.00	0.00	0.00	
4,000.0	9.38	103.83	3,961.4	-115.6	469.5	158.0	0.00	0.00	0.00	
4,100.0	9.38	103.83	4,060.0	-119.5	485.3	163.3	0.00	0.00	0.00	
4,200.0	9.38	103.83	4,158.7	-123.4	501.1	168.6	0.00	0.00	0.00	
4,300.0	9.38	103.83	4,257.4	-127.3	516.9	174.0	0.00	0.00	0.00	
4,400.0	9.38	103.83	4,356.0	-131.2	532.8	179.3	0.00	0.00	0.00	
4,500.0	9.38	103.83	4,454.7	-135.1	548.6	184.6	0.00	0.00	0.00	
4,600.0	9.38	103.83	4,553.3	-139.0	564.4	190.0	0.00	0.00	0.00	
4,700.0	9.38	103.83	4,652.0	-142.8	580.3	195.3	0.00	0.00	0.00	
4,800.0	9.38	103.83	4,750.7	-146.7	596.1	200.6	0.00	0.00	0.00	
4,900.0	9.38	103.83	4,849.3	-150.6	611.9	205.9	0.00	0.00	0.00	

Survey Report

Company:	Bison Oil & Gas II, LLC	Local Co-ordinate Reference:	Well HUNT FED 8-60 17B-20-4
Project:	WELD COUNTY, COLORADO (NAD 83)	TVD Reference:	GL @ 4938.5usft
Site:	HUNT 8-60 17B SWNE SEC. 17 T8N R60W	MD Reference:	GL @ 4938.5usft
Well:	HUNT FED 8-60 17B-20-4	North Reference:	Grid
Wellbore:	Wellbore #1	Survey Calculation Method:	Minimum Curvature
Design:	Design #1	Database:	EDM 5000.16 Single User Db

Planned Survey

Measured Depth (usft)	Inclination (°)	Azimuth (°)	Vertical Depth (usft)	+N/-S (usft)	+E/-W (usft)	Vertical Section (usft)	Dogleg Rate (°/100usft)	Build Rate (°/100usft)	Turn Rate (°/100usft)
5,000.0	9.38	103.83	4,948.0	-154.5	627.7	211.3	0.00	0.00	0.00
5,100.0	9.38	103.83	5,046.7	-158.4	643.6	216.6	0.00	0.00	0.00
5,200.0	9.38	103.83	5,145.3	-162.3	659.4	221.9	0.00	0.00	0.00
5,300.0	9.38	103.83	5,244.0	-166.2	675.2	227.2	0.00	0.00	0.00
5,400.0	9.38	103.83	5,342.6	-170.1	691.0	232.6	0.00	0.00	0.00
5,500.0	9.38	103.83	5,441.3	-174.0	706.9	237.9	0.00	0.00	0.00
5,600.0	9.38	103.83	5,540.0	-177.9	722.7	243.2	0.00	0.00	0.00
5,626.3	9.38	103.83	5,565.9	-178.9	726.9	244.6	0.00	0.00	0.00
Start Drop -2.00									
5,700.0	7.91	103.83	5,638.8	-181.6	737.6	248.2	2.00	-2.00	0.00
5,800.0	5.91	103.83	5,738.0	-184.5	749.3	252.2	2.00	-2.00	0.00
5,900.0	3.91	103.83	5,837.7	-186.5	757.6	255.0	2.00	-2.00	0.00
6,000.0	1.91	103.83	5,937.5	-187.7	762.5	256.6	2.00	-2.00	0.00
6,095.4	0.00	0.00	6,032.9	-188.1	764.1	257.1	2.00	-2.00	-108.86
Start Build 13.48									
6,100.0	0.62	180.59	6,037.5	-188.1	764.1	257.2	13.48	13.48	-3,880.03
6,200.0	14.10	180.59	6,136.5	-200.9	763.9	269.9	13.48	13.48	0.00
6,300.0	27.58	180.59	6,229.7	-236.4	763.6	305.2	13.48	13.48	0.00
6,400.0	41.06	180.59	6,312.1	-292.7	763.0	361.2	13.48	13.48	0.00
6,500.0	54.54	180.59	6,379.1	-366.6	762.2	434.7	13.48	13.48	0.00
6,600.0	68.02	180.59	6,427.1	-454.0	761.3	521.7	13.48	13.48	0.00
6,700.0	81.49	180.59	6,453.3	-550.3	760.3	617.5	13.48	13.48	0.00
6,763.1	90.00	180.59	6,458.0	-613.2	759.7	680.0	13.48	13.48	0.00
Start DLS 0.01 TFO -90.01									
6,800.0	90.00	180.59	6,458.0	-650.1	759.3	716.7	0.00	0.00	0.00
6,900.0	90.00	180.58	6,458.0	-750.1	758.3	816.2	0.02	0.00	-0.02
7,000.0	90.00	180.56	6,458.0	-850.0	757.3	915.7	0.01	0.00	-0.01
7,100.0	90.00	180.55	6,458.0	-950.0	756.3	1,015.2	0.01	0.00	-0.01
7,200.0	90.00	180.54	6,458.0	-1,050.0	755.4	1,114.7	0.01	0.00	-0.01
7,300.0	90.00	180.53	6,458.0	-1,150.0	754.4	1,214.2	0.01	0.00	-0.01
7,400.0	90.00	180.52	6,458.0	-1,250.0	753.5	1,313.7	0.01	0.00	-0.01
7,500.0	90.00	180.51	6,458.0	-1,350.0	752.6	1,413.2	0.01	0.00	-0.01
7,600.0	90.00	180.49	6,458.0	-1,450.0	751.7	1,512.7	0.01	0.00	-0.01
7,700.0	90.00	180.48	6,458.0	-1,550.0	750.9	1,612.2	0.01	0.00	-0.01
7,800.0	90.00	180.47	6,458.0	-1,650.0	750.1	1,711.7	0.01	0.00	-0.01
7,900.0	90.00	180.46	6,458.0	-1,750.0	749.2	1,811.2	0.01	0.00	-0.01
8,000.0	90.00	180.45	6,458.0	-1,850.0	748.4	1,910.7	0.01	0.00	-0.01
8,100.0	90.00	180.44	6,458.0	-1,950.0	747.7	2,010.2	0.01	0.00	-0.01
8,200.0	90.00	180.42	6,458.0	-2,050.0	746.9	2,109.7	0.01	0.00	-0.01
8,300.0	90.00	180.41	6,458.0	-2,150.0	746.2	2,209.2	0.01	0.00	-0.01
8,400.0	90.00	180.40	6,458.0	-2,250.0	745.5	2,308.7	0.01	0.00	-0.01
8,500.0	90.00	180.39	6,458.0	-2,350.0	744.8	2,408.2	0.01	0.00	-0.01
8,600.0	90.00	180.38	6,458.0	-2,450.0	744.1	2,507.7	0.01	0.00	-0.01
8,700.0	90.00	180.37	6,458.0	-2,550.0	743.5	2,607.3	0.01	0.00	-0.01

Survey Report

Company:	Bison Oil & Gas II, LLC	Local Co-ordinate Reference:	Well HUNT FED 8-60 17B-20-4
Project:	WELD COUNTY, COLORADO (NAD 83)	TVD Reference:	GL @ 4938.5usft
Site:	HUNT 8-60 17B SWNE SEC. 17 T8N R60W	MD Reference:	GL @ 4938.5usft
Well:	HUNT FED 8-60 17B-20-4	North Reference:	Grid
Wellbore:	Wellbore #1	Survey Calculation Method:	Minimum Curvature
Design:	Design #1	Database:	EDM 5000.16 Single User Db

Planned Survey

Measured Depth (usft)	Inclination (°)	Azimuth (°)	Vertical Depth (usft)	+N/-S (usft)	+E/-W (usft)	Vertical Section (usft)	Dogleg Rate (°/100usft)	Build Rate (°/100usft)	Turn Rate (°/100usft)
8,800.0	90.00	180.35	6,458.0	-2,650.0	742.8	2,706.8	0.01	0.00	-0.01
8,900.0	90.00	180.34	6,458.0	-2,750.0	742.2	2,806.3	0.01	0.00	-0.01
9,000.0	90.00	180.33	6,458.0	-2,850.0	741.7	2,905.8	0.01	0.00	-0.01
9,100.0	90.00	180.32	6,458.0	-2,950.0	741.1	3,005.4	0.01	0.00	-0.01
9,200.0	90.00	180.31	6,458.0	-3,050.0	740.5	3,104.9	0.01	0.00	-0.01
9,300.0	90.00	180.30	6,458.0	-3,150.0	740.0	3,204.4	0.01	0.00	-0.01
9,400.0	90.00	180.28	6,458.0	-3,250.0	739.5	3,304.0	0.01	0.00	-0.01
9,500.0	90.00	180.27	6,458.0	-3,350.0	739.0	3,403.5	0.01	0.00	-0.01
9,600.0	90.00	180.26	6,458.0	-3,450.0	738.6	3,503.0	0.01	0.00	-0.01
9,700.0	90.00	180.25	6,458.0	-3,550.0	738.1	3,602.6	0.01	0.00	-0.01
9,800.0	90.00	180.24	6,458.0	-3,650.0	737.7	3,702.1	0.01	0.00	-0.01
9,900.0	90.00	180.23	6,458.0	-3,750.0	737.3	3,801.7	0.01	0.00	-0.01
10,000.0	90.00	180.21	6,458.0	-3,850.0	736.9	3,901.2	0.01	0.00	-0.01
10,100.0	90.00	180.20	6,458.0	-3,950.0	736.5	4,000.8	0.01	0.00	-0.01
10,200.0	90.00	180.19	6,458.0	-4,050.0	736.2	4,100.3	0.01	0.00	-0.01
10,300.0	90.00	180.18	6,458.0	-4,150.0	735.9	4,199.9	0.01	0.00	-0.01
10,400.0	90.00	180.17	6,458.0	-4,250.0	735.6	4,299.4	0.01	0.00	-0.01
10,500.0	90.00	180.16	6,458.0	-4,350.0	735.3	4,399.0	0.01	0.00	-0.01
10,600.0	90.00	180.14	6,458.0	-4,450.0	735.0	4,498.5	0.01	0.00	-0.01
10,700.0	90.00	180.13	6,458.0	-4,550.0	734.8	4,598.1	0.01	0.00	-0.01
10,800.0	90.00	180.12	6,458.0	-4,650.0	734.6	4,697.6	0.01	0.00	-0.01
10,900.0	90.00	180.11	6,458.0	-4,750.0	734.4	4,797.2	0.01	0.00	-0.01
11,000.0	90.00	180.10	6,458.0	-4,850.0	734.2	4,896.8	0.01	0.00	-0.01
11,100.0	90.00	180.08	6,458.0	-4,950.0	734.0	4,996.3	0.01	0.00	-0.01
11,200.0	90.00	180.07	6,458.0	-5,050.0	733.9	5,095.9	0.01	0.00	-0.01
11,300.0	90.00	180.06	6,458.0	-5,150.0	733.8	5,195.5	0.01	0.00	-0.01
11,400.0	90.00	180.05	6,458.0	-5,250.0	733.7	5,295.0	0.01	0.00	-0.01
11,500.0	90.00	180.04	6,458.0	-5,350.0	733.6	5,394.6	0.01	0.00	-0.01
11,600.0	90.00	180.03	6,458.0	-5,450.0	733.6	5,494.2	0.01	0.00	-0.01
11,700.0	90.00	180.01	6,458.0	-5,550.0	733.5	5,593.8	0.01	0.00	-0.01
11,800.0	90.00	180.00	6,458.0	-5,650.0	733.5	5,693.4	0.01	0.00	-0.01
11,900.0	90.00	179.99	6,458.0	-5,750.0	733.5	5,792.9	0.01	0.00	-0.01
12,000.0	90.00	179.98	6,458.0	-5,850.0	733.5	5,892.5	0.01	0.00	-0.01
12,100.0	90.00	179.97	6,458.0	-5,950.0	733.6	5,992.1	0.01	0.00	-0.01
12,200.0	90.00	179.96	6,458.0	-6,050.0	733.6	6,091.7	0.01	0.00	-0.01
12,300.0	90.00	179.94	6,458.0	-6,150.0	733.7	6,191.3	0.01	0.00	-0.01
12,400.0	90.00	179.93	6,458.0	-6,250.0	733.8	6,290.9	0.01	0.00	-0.01
12,500.0	90.00	179.92	6,458.0	-6,350.0	734.0	6,390.5	0.01	0.00	-0.01
12,600.0	90.00	179.91	6,458.0	-6,450.0	734.1	6,490.1	0.01	0.00	-0.01
12,700.0	90.00	179.90	6,458.0	-6,550.0	734.3	6,589.7	0.01	0.00	-0.01
12,800.0	90.00	179.89	6,458.0	-6,650.0	734.5	6,689.3	0.01	0.00	-0.01
12,900.0	90.00	179.87	6,458.0	-6,750.0	734.7	6,788.9	0.01	0.00	-0.01
13,000.0	90.00	179.86	6,458.0	-6,850.0	734.9	6,888.5	0.01	0.00	-0.01

Survey Report

Company:	Bison Oil & Gas II, LLC	Local Co-ordinate Reference:	Well HUNT FED 8-60 17B-20-4
Project:	WELD COUNTY, COLORADO (NAD 83)	TVD Reference:	GL @ 4938.5usft
Site:	HUNT 8-60 17B SWNE SEC. 17 T8N R60W	MD Reference:	GL @ 4938.5usft
Well:	HUNT FED 8-60 17B-20-4	North Reference:	Grid
Wellbore:	Wellbore #1	Survey Calculation Method:	Minimum Curvature
Design:	Design #1	Database:	EDM 5000.16 Single User Db

Planned Survey

Measured Depth (usft)	Inclination (°)	Azimuth (°)	Vertical Depth (usft)	+N/-S (usft)	+E/-W (usft)	Vertical Section (usft)	Dogleg Rate (°/100usft)	Build Rate (°/100usft)	Turn Rate (°/100usft)
13,100.0	90.00	179.85	6,458.0	-6,950.0	735.2	6,988.1	0.01	0.00	-0.01
13,200.0	90.00	179.84	6,458.0	-7,050.0	735.4	7,087.7	0.01	0.00	-0.01
13,300.0	90.00	179.83	6,458.0	-7,150.0	735.7	7,187.3	0.01	0.00	-0.01
13,400.0	90.00	179.82	6,458.0	-7,250.0	736.0	7,286.9	0.01	0.00	-0.01
13,500.0	90.00	179.80	6,458.0	-7,350.0	736.4	7,386.5	0.01	0.00	-0.01
13,600.0	90.00	179.79	6,458.0	-7,450.0	736.7	7,486.1	0.01	0.00	-0.01
13,700.0	90.00	179.78	6,458.0	-7,550.0	737.1	7,585.7	0.01	0.00	-0.01
13,800.0	90.00	179.77	6,458.0	-7,649.9	737.5	7,685.3	0.01	0.00	-0.01
13,900.0	90.00	179.76	6,458.0	-7,749.9	737.9	7,785.0	0.01	0.00	-0.01
14,000.0	90.00	179.75	6,458.0	-7,849.9	738.3	7,884.6	0.01	0.00	-0.01
14,100.0	90.00	179.73	6,458.0	-7,949.9	738.8	7,984.2	0.01	0.00	-0.01
14,104.3	90.00	179.73	6,458.0	-7,954.3	738.8	7,988.6	0.01	0.00	-0.01
Start 100.2 hold at 14104.4 MD									
14,200.0	90.00	179.73	6,458.0	-8,049.9	739.3	8,083.8	0.00	0.00	0.00
14,204.5	90.00	179.73	6,458.0	-8,054.5	739.3	8,088.3	0.00	0.00	0.00
TD at 14204.5									

Design Targets

Target Name - hit/miss target - Shape	Dip Angle (°)	Dip Dir. (°)	TVD (usft)	+N/-S (usft)	+E/-W (usft)	Northing (usft)	Easting (usft)	Latitude	Longitude
HUNT FED 8-60 17B- - plan hits target center - Point	0.00	359.10	6,458.0	-616.3	759.6	1,486,836.24	3,385,146.56	40° 39' 41.342 N	104° 6' 42.149 W
HUNT FED 8-60 17B- - plan misses target center by 0.6usft at 14204.5usft MD (6458.0 TVD, -8054.5 N, 739.3 E) - Point	0.00	359.10	6,458.0	-8,054.5	738.7	1,479,398.13	3,385,125.63	40° 38' 27.856 N	104° 6' 43.931 W
HUNT FED 8-60 17B- - plan hits target center - Point	0.00	359.10	6,458.0	-7,954.3	738.8	1,479,498.33	3,385,125.73	40° 38' 28.846 N	104° 6' 43.909 W

Plan Annotations

Measured Depth (usft)	Vertical Depth (usft)	Local Coordinates		Comment
		+N/-S (usft)	+E/-W (usft)	
800	800	0	0	Start Build 2.00
1269	1267	-9	37	Start 4357.2 hold at 1269.1 MD
5626	5566	-179	727	Start Drop -2.00
6095	6033	-188	764	Start Build 13.48
6763	6458	-613	760	Start DLS 0.01 TFO -90.01
14,104	6458	-7954	739	Start 100.2 hold at 14104.4 MD
14,205	6458	-8054	739	TD at 14204.5