

Inspection Photos

Loc#414152

Operator: Caerus

Insp#:692403326

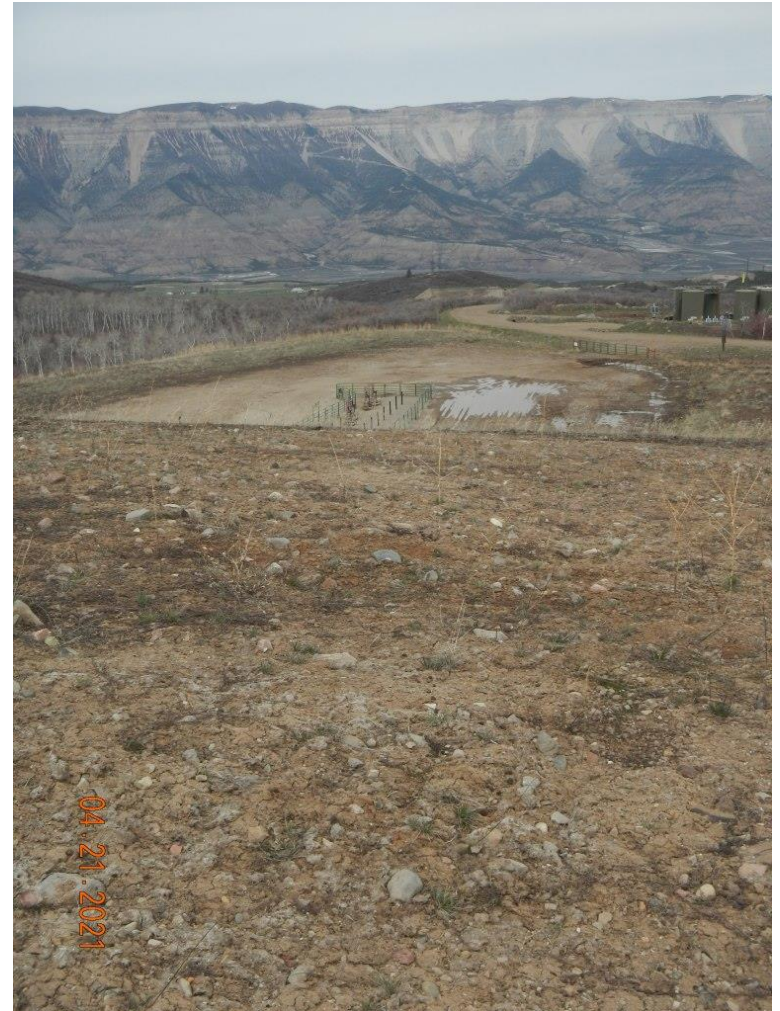
Insp Date: 4/21/21



COLORADO
Oil & Gas Conservation
Commission
Department of Natural Resources



Photo#1:
Upper portion of Location that has been reclaimed.



Photo#2:
View to lower pad and tank /separator pads.

April 21, 2021



Photo#3:

Overview of lower pad from entry. Showing ponding and rutting on east side of Pad & entry.

April 21, 2021



COLORADO
Oil & Gas Conservation
Commission
Department of Natural Resources

Caerus Rulison Loc#414152



Photo#4:
Debris on West side of well corral in traffic pattern.

April 21, 2021



Photo#5:
Pad, East side of Well Corral.



Photo#6:
Snow melt off South rocked cut slope.



Photo#7:
Snow melt off South rocked cut slope.

April 21, 2021



COLORADO
Oil & Gas Conservation
Commission
Department of Natural Resources

Caerus Rulison Loc#414152



Photo#8:
Lower level, separators.



Photo#9:
Lower level, tanks.

April 21, 2021



COLORADO
Oil & Gas Conservation
Commission
Department of Natural Resources

Caerus Rulison Loc#414152