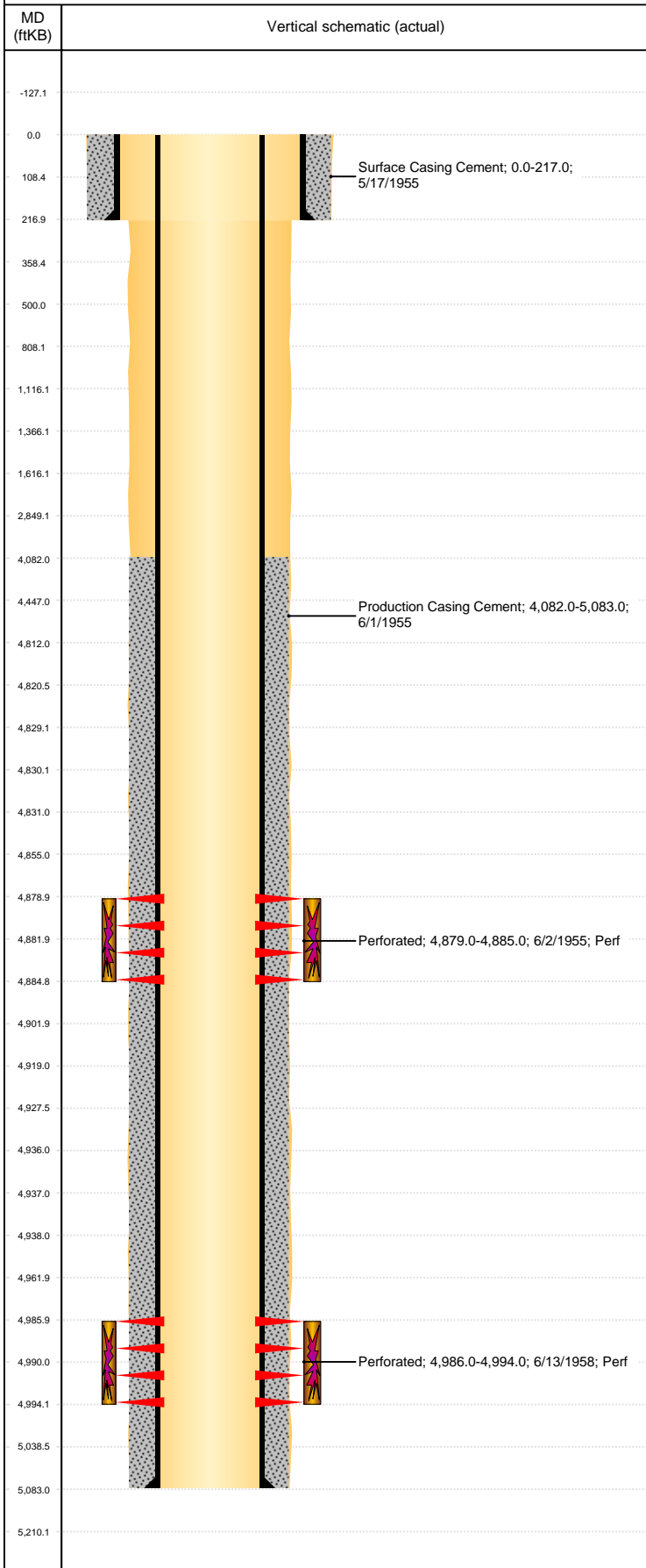


Well Name: NW GRAYLIN D SAND UNIT 12

VERTICAL, Original Hole, 4/12/2021 11:01:36 AM



| Well Header | | | | | | | |
|--|------------------------|---------------|-----------------------|--------------------|------------------------------|-------------------------|----------------|
| API 05-075-06129 | | Business Unit | | District | | Well Config VERTICAL | |
| KB - GL / MSL (ft... | Spud Date 5/17/1955 | | P & A Date | | Well Production Status PR | SoRT No | |
| Comment FORMER OPERATOR: BENCHMARK ENERGY LLC - 10380 | | | | | | | |
| Wellbore Sections | | | | | | | |
| Section Des | | Size (in) | | Act Top, MD (ftKB) | | Act Btm, MD (ftKB) | |
| SURFACE | | 12 1/4 | | 0 | | 217 | |
| PRODUCTION | | 7 7/8 | | 217 | | 5,083 | |
| Casing Strings | | | | | | | |
| Csg Des | | Run Date | OD (in) | Wt/Len (lb/ft) | Grade | Top, MD (ftKB) | MD (ftKB) |
| Surface | | 5/17/1955 | 9 5/8 | 25.40 | | 0.0 | 217.0 |
| Production | | 6/1/1955 | 5 1/2 | 15.50 | | 0.0 | 5,083.0 |
| Cement | | | | | | | |
| Des | | | Start Date | | Top (ftKB) | | Btm (ftKB) |
| Surface Casing Cement | | | 5/17/1955 | | 0.0 | | 217.0 |
| Production Casing Cement | | | 6/1/1955 | | 4,082.0 | | 5,083.0 |
| Zone Statuses | | | | | | | |
| Zone Name | Status Date | Status | Fluid Type | Job | | | Prod Method |
| | | | | | | | |
| Perforation Data | | | | | | | |
| Linked Zone | | Bnch/Stg | Entered Shot Total | Top (ftKB) | | Btm (ftKB) | Date |
| D SAND, Original Hole | | | | 4,879.00 | | 4,885.00 | 6/2/1955 |
| J SAND, Original Hole | | | | 4,986.00 | | 4,994.00 | 6/13/1958 |
| Stimulation Intervals | | | | | | | |
| Zone | | | Start Date | | Top (ftKB) | | Btm (ftKB) |
| D SAND, Original Hole | | | 6/8/1955 | | 4,879.0 | | 4,885.0 |
| J SAND, Original Hole | | | 6/13/1958 | | 4,986.0 | | 4,994.0 |
| Other In Hole | | | | | | | |
| Run Date | Des | | | Make | OD (in) | Top (ftKB) | Btm (ftKB) |
| | | | | | | | |
| Logs | | | | | | | |
| Date | | Type | | | Top, MD (ftKB) | | Btm, MD (ftKB) |
| | | | | | | | |