

**Inspection Photos**  
**Location Name: Planck 1-14H**  
**Location ID: 424707**

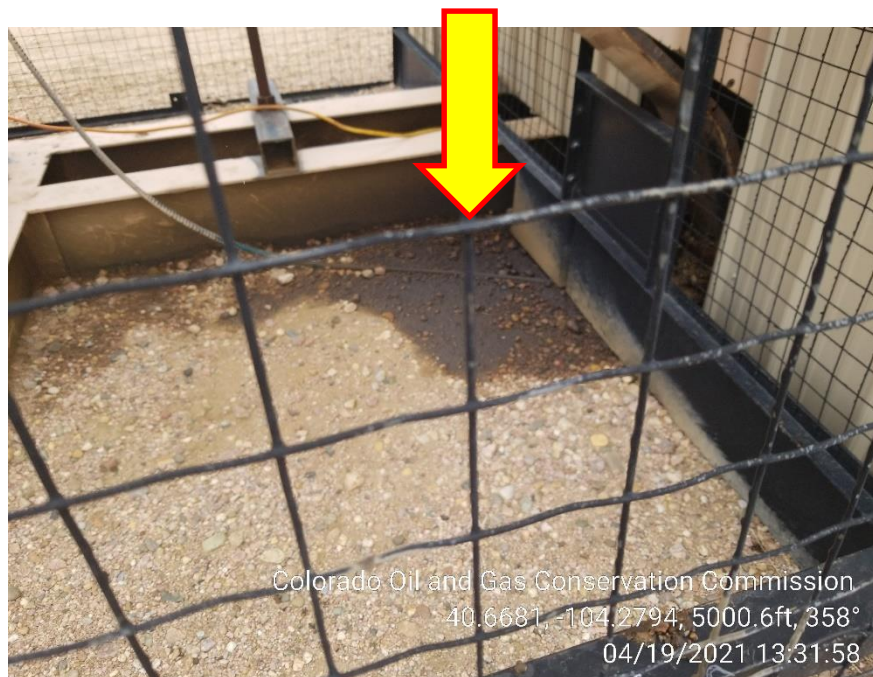


**Photo 1 – Wellhead – Stained Soil**



**Photo 2 – Wellhead Sign**

**Inspection Photos**  
**Location Name: Planck 1-14H**  
**Location ID: 424707**



**Photo 3 – Gas Engine – Stained Soil**



**Photo 4 – Gas Engine**



**Inspection Photos**  
**Location Name: Planck 1-14H**  
**Location ID: 424707**



**Photo 5 – Stained Soil cleaned up**



**Photo 6 – Exhaust**

**Inspection Photos**  
**Location Name: Planck 1-14H**  
**Location ID: 424707**



**Photo 7 – Unused Engine Parts**



**Photo 8 – ECD**

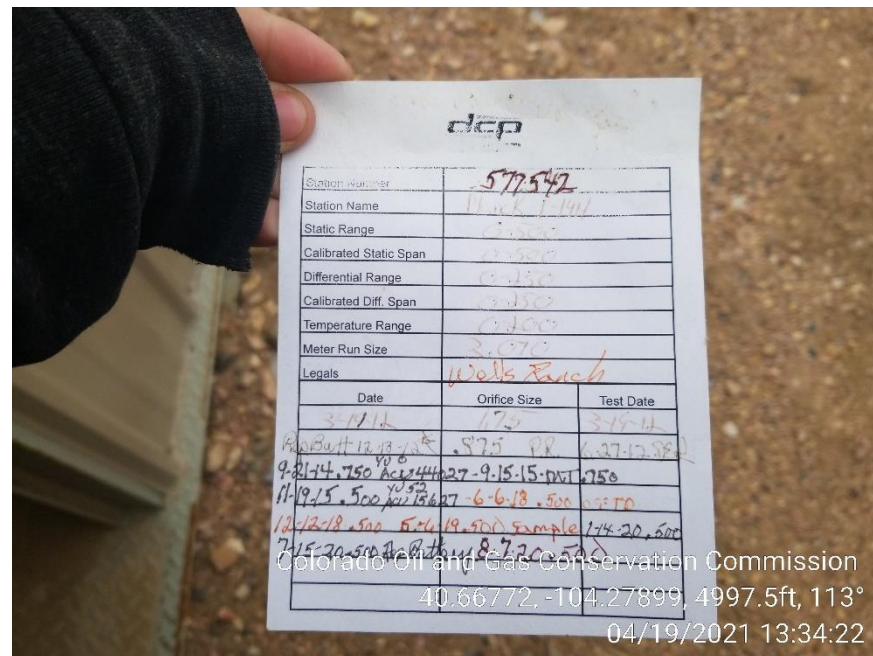


Inspection Photos  
Location Name: Planck 1-14H  
Location ID: 424707



Colorado Oil and Gas Conservation Commission  
40.66782, -104.279, 5003.2ft, 192°  
04/19/2021 13:33:59

Photo 9 – Gas Meter



Station Number			577542
Station Name			Planck 1-14H
Static Range			0-500
Calibrated Static Span			0-500
Differential Range			0-150
Calibrated Diff. Span			0-150
Temperature Range			0-150
Meter Run Size			2.070
Legals			Wells Ranch
Date		Orifice Size	Test Date
3-17-12		175	3-15-12
9-21-14		175	9-15-15
11-19-15		175	11-15-15
12-12-18		175	12-15-18
7-15-20		175	7-15-20

Colorado Oil and Gas Conservation

40.66772, -104.27899

Colorado Oil and Gas Conservation Commission  
40.66772, -104.27899, 4997.5ft, 113°  
04/19/2021 13:34:22

Photo 10 – Gas Meter Calibration Card

**Inspection Photos**  
**Location Name: Planck 1-14H**  
**Location ID: 424707**



**Photo 11 – Tank Battery**



**Photo 12 – Tank Battery Sign**



**Inspection Photos**  
**Location Name: Planck 1-14H**  
**Location ID: 424707**



**Photo 13 – Tank Battery – Stained Soil at Loading Are**