

File
Schlumberger

CEMENT BOND LOG VARIABLE DENSITY

COUNTY <u>RIO BLANCO</u>	COMPANY <u>CHEVRON USA INC.</u>		
Field or LOCATION <u>AGELL</u>	WELL <u>FEE 22</u>		
WELL <u>FEE 22</u>	FIELD <u>RANGELY</u>		
COMPANY <u>CHEVRON USA INC.</u>	COUNTY <u>RIO BLANCO</u> STATE <u>COLORADO</u>		
LOCATION <u>4</u>	API Serial No. _____		
Sec. <u>21</u> Twp. <u>2N</u> Rge. <u>102W</u>	Other Services: <u>None</u>		
Permanent Datum: <u>GL</u> , Elev. _____	Elev.: K.B. <u>5235</u>		
Log Measured From <u>KB</u> , _____ Ft. Above Perm. Datum	D.F. _____		
Drilling Measured From <u>KB</u>	G.L. _____		
Date <u>10/17/81</u>	Casing Fluid <u>WATER/OIL</u>		
Run No. <u>ONE</u>	Fluid Level <u>FULL</u>		
Depth — Driller <u>6565</u>	Max. Rec. Temp. _____ °F		
Depth — Logger <u>6558</u>	Est. Cement Top <u>TOP OF LINER</u>		
Btm. Log Interval <u>6550</u>	Unit District <u>5749 VERNAL</u>		
Top Log Interval <u>6096</u>	Recorded By <u>SHELTON</u>		
Open Hole Size <u>6 1/8</u>	Witnessed By <u>WAHBI</u>		
CASING REC. Size Wt/Ft Grade Type Joint Top Bottom			
Surface String			
Prot. String			
Prod. String <u>7</u>	<u>SURFACE</u> <u>6240</u>		
Liner <u>5</u> <u>18</u>	<u>6074</u> <u>6563</u>		
PRIMARY CEMENTING DATA			
STRING Surface Protection Production Liner			
Vol. of cement			<u>200 SACKS</u>
Type of cement			
Additive			
Retarder			
Wt. of slurry			
Water loss			
Type fluid in csg.			
wt.			

FOLD HERE The well name, location and borehole reference data were furnished by the customer.

PRIMARY CEMENTING DATA

☐ Actual ☐ Estimated

Hour - Date

Started pumping cement

Release pressure

Start Cement Bond Log

Finish Cement Bond Log

Preceding fluid

Volume

Pipe reciprocated during Pumping: Yes

No

REMARKS:

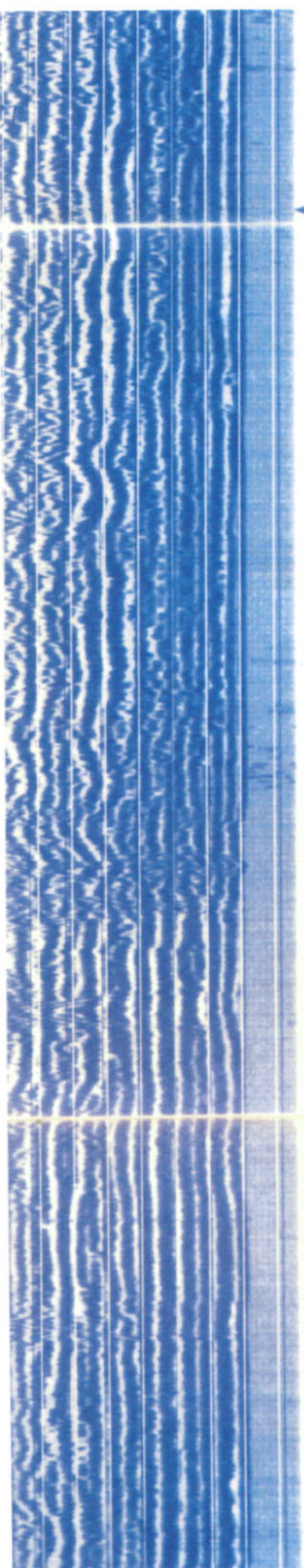
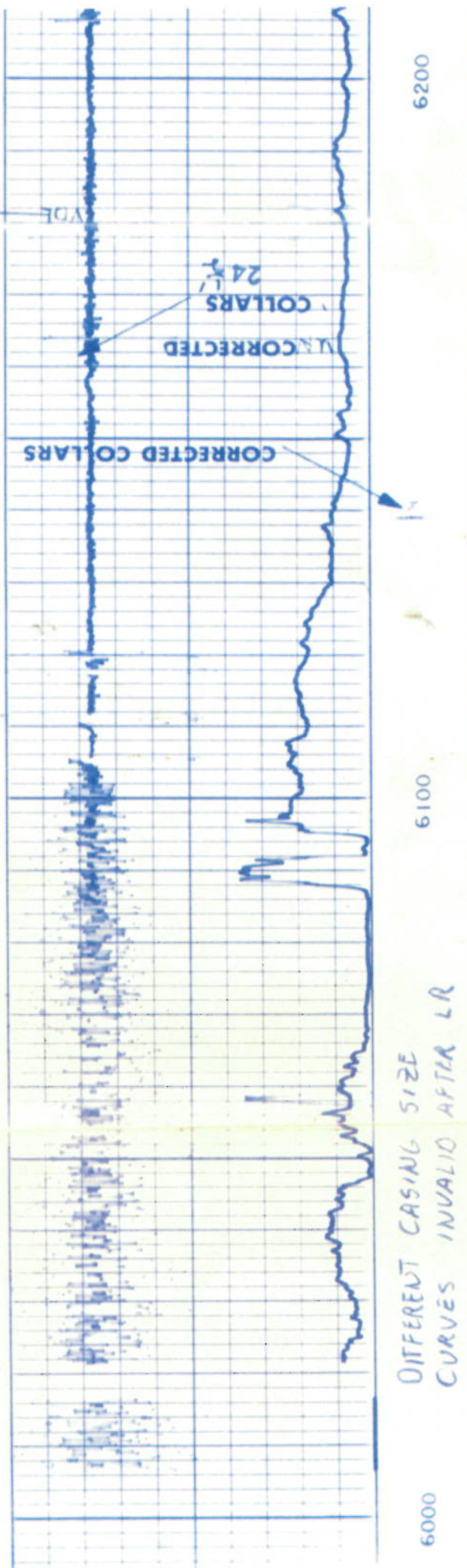
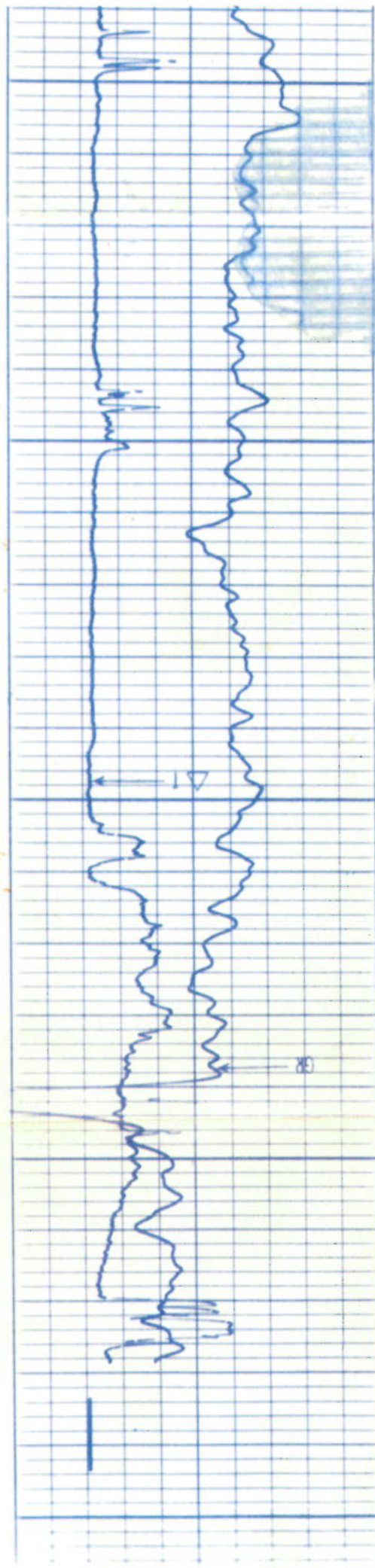
DEPTH CORRELATION WITH OPEN HOLE SONIC LOGS

Service Order Number

175572

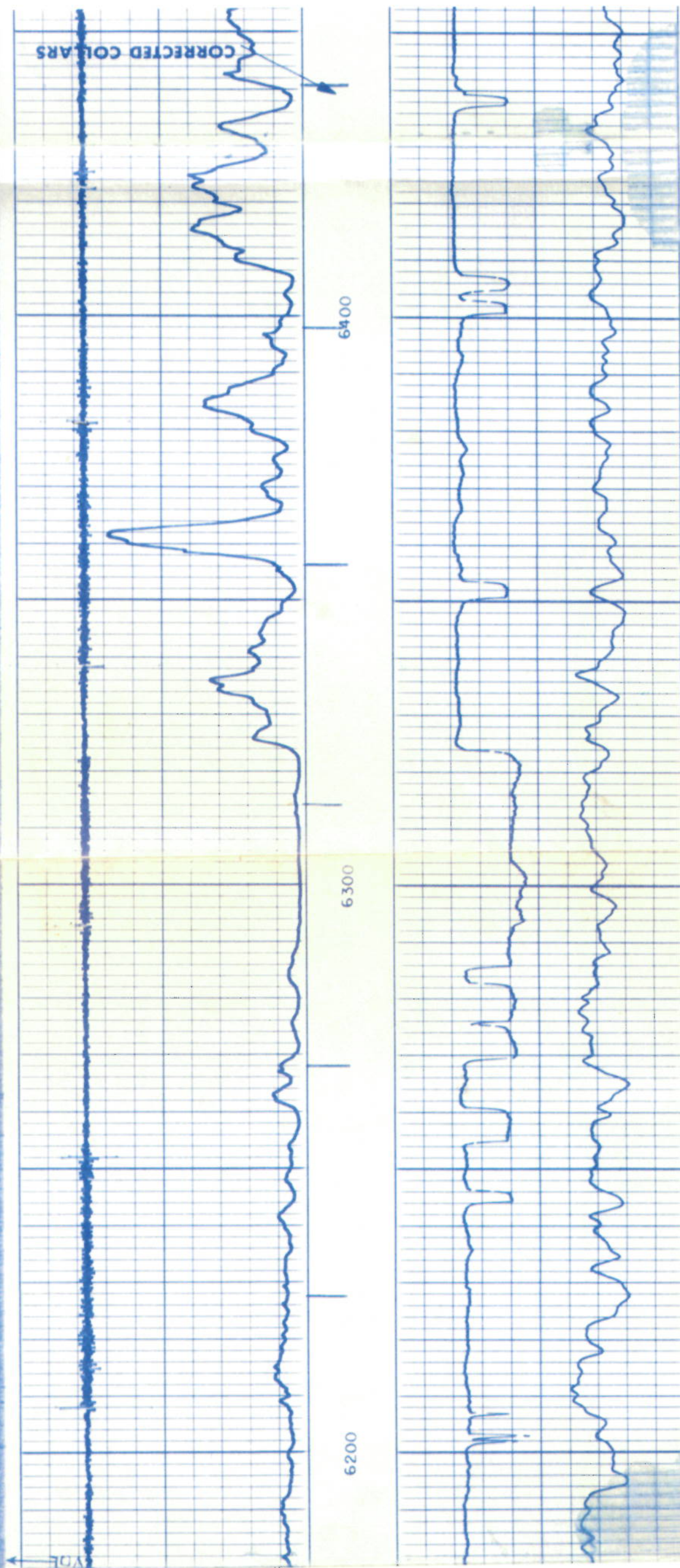
Casing Collar Memory Distance 24.5 ft.

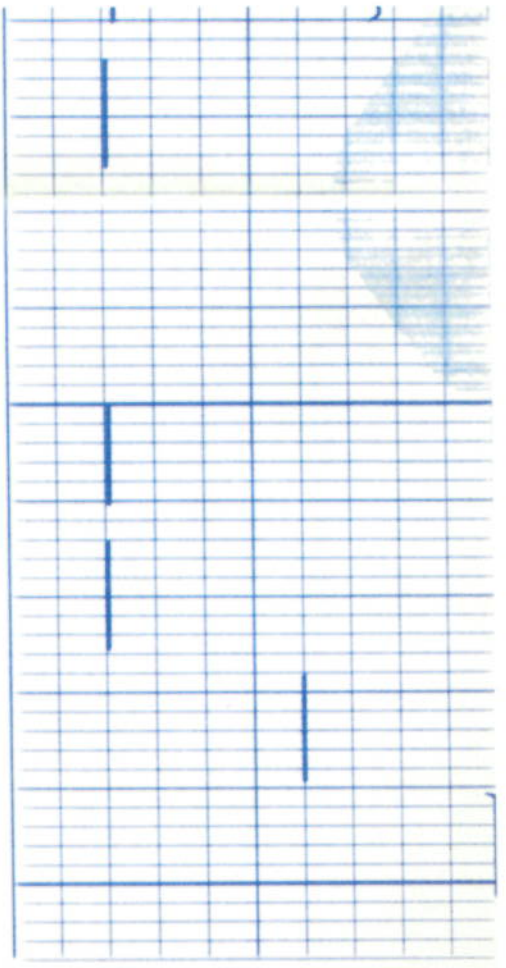
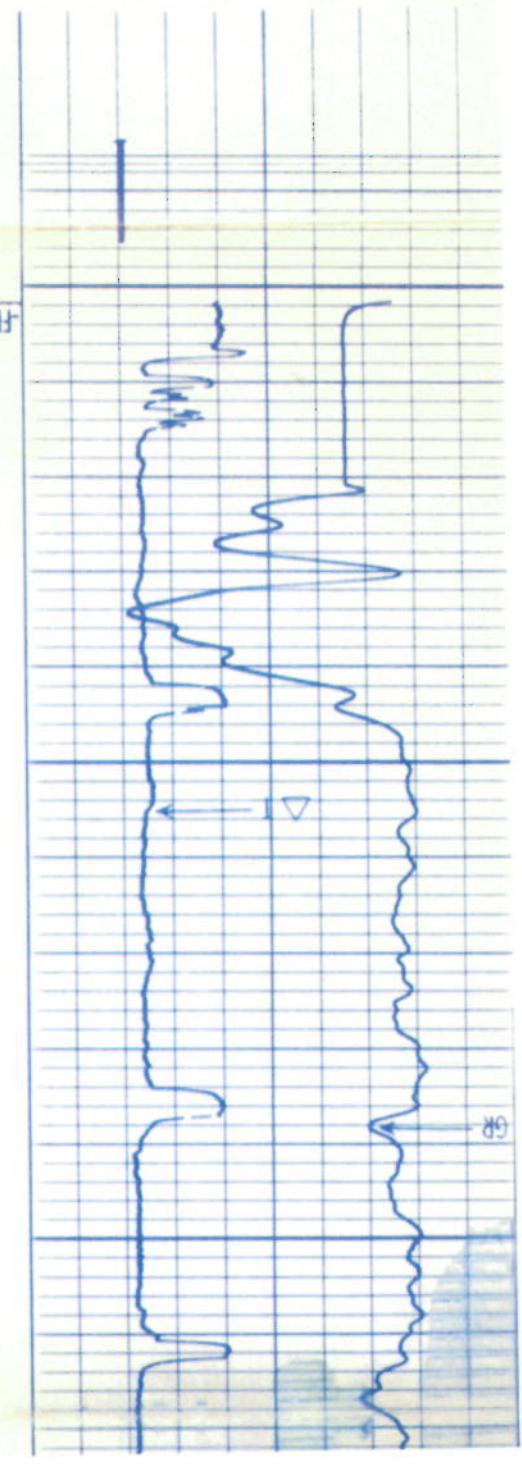
Radiation Log Memory Distance 20 ft.



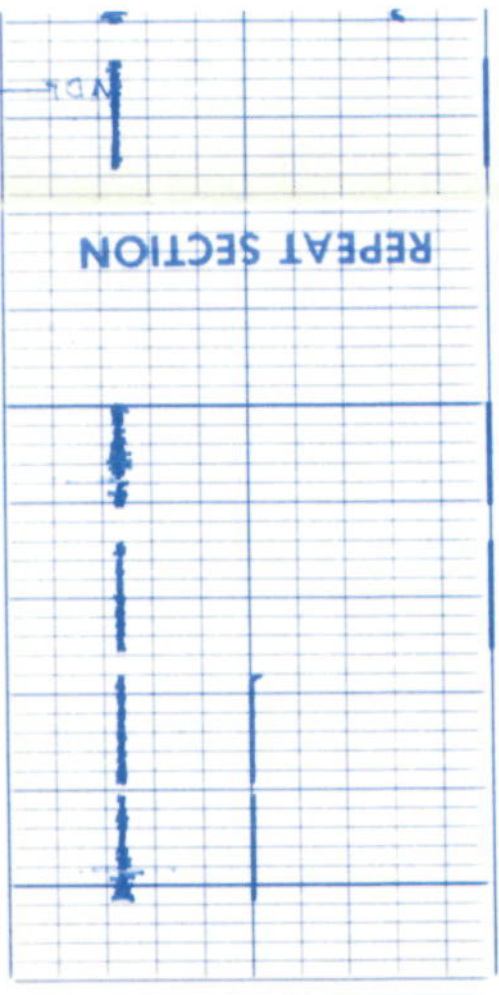
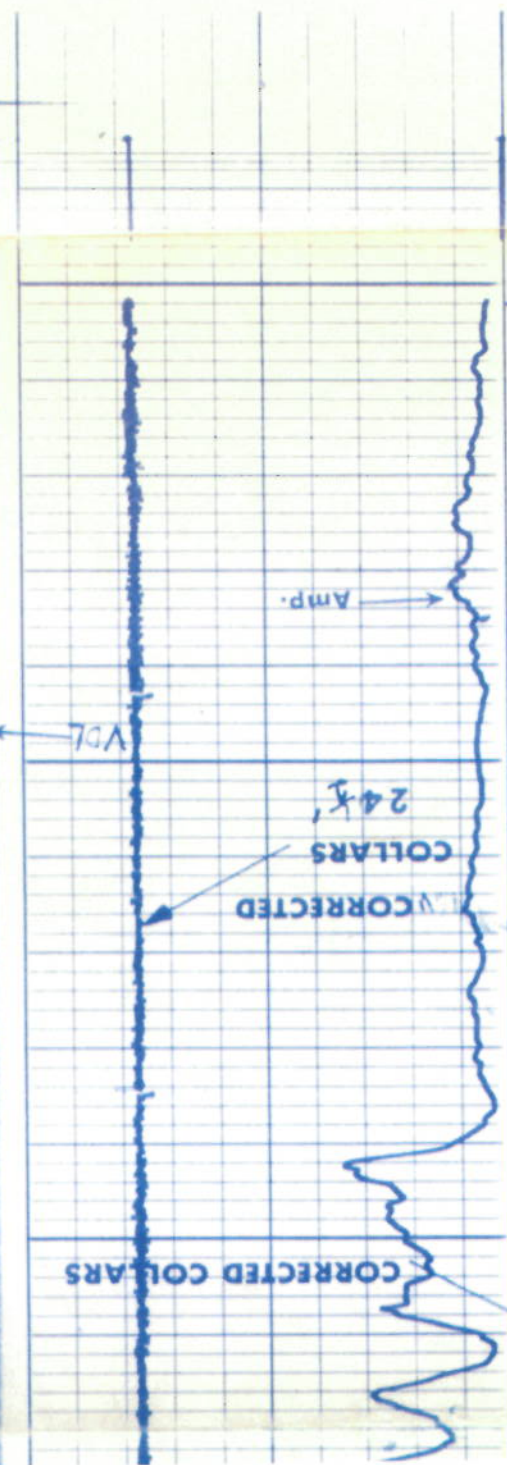
TRANSIT TIME	3	MICROSECONDS	400
SPACING	3		200
GAMMA RAY			
API UNITS		150	300
NEUTRON			
CPS		300	400

Casing Bond		Amplified Casing Bond		Variable Density	
0	50	0	200	0	12
MILLIVOLTS	MILLIVOLTS	MILLIVOLTS	MILLIVOLTS	MICROSECONDS	SPACI
Casing Collars		Casing Collars		Corrected Depth	
DEPTH		DEPTH		DEPTH	





6300
2
3
4



BEFORE SURVEY CALIBRATION

REPEAT SECTION

VOL

6500

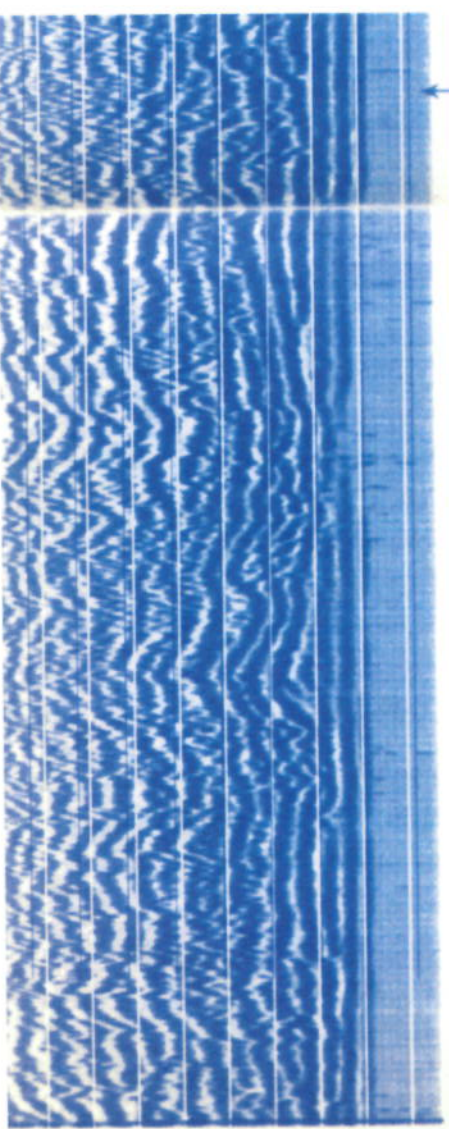
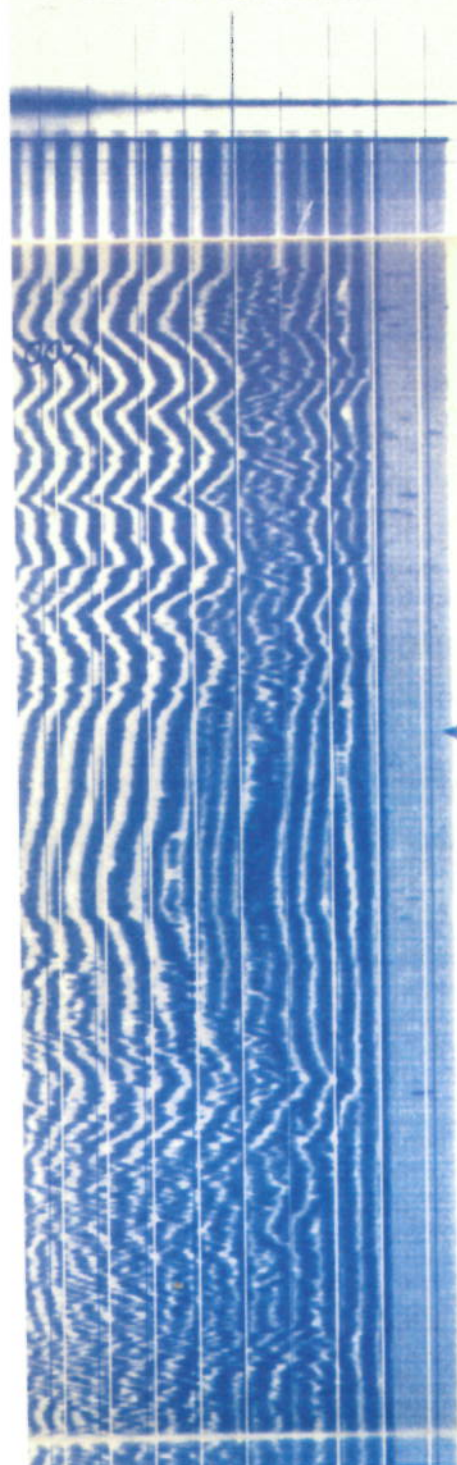
Amp.

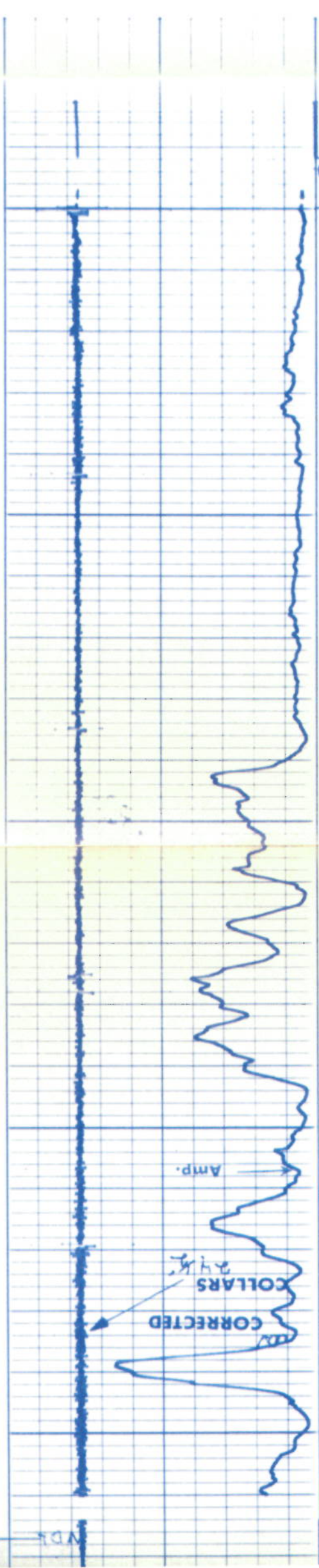
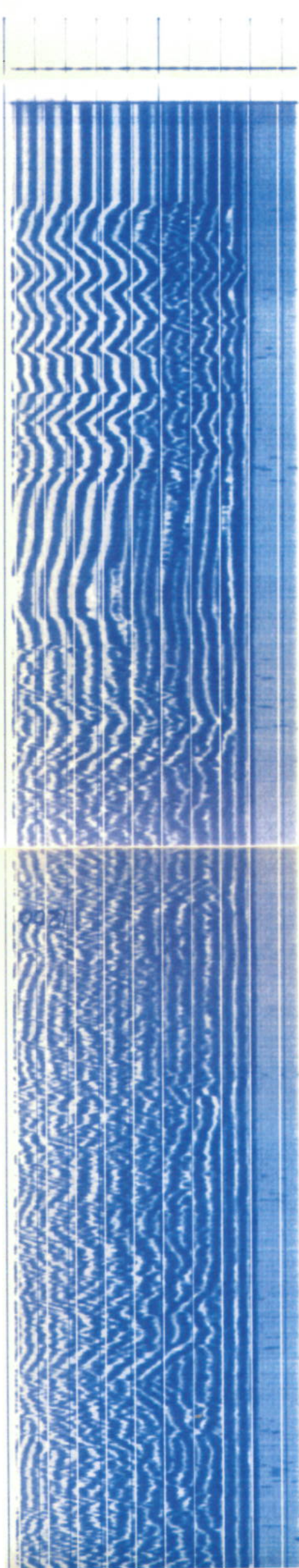
COLLARS
245'

CORRECTED

CORRECTED COLLARS

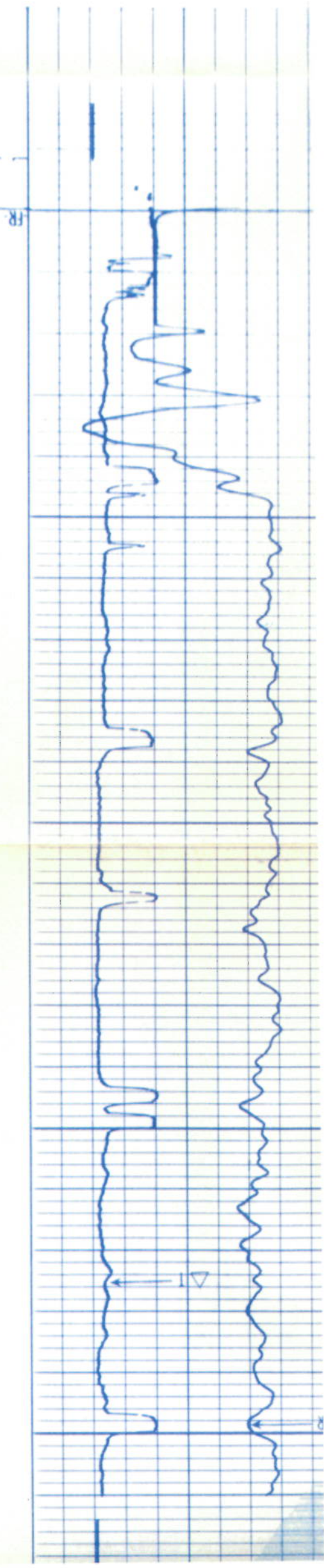
VOL

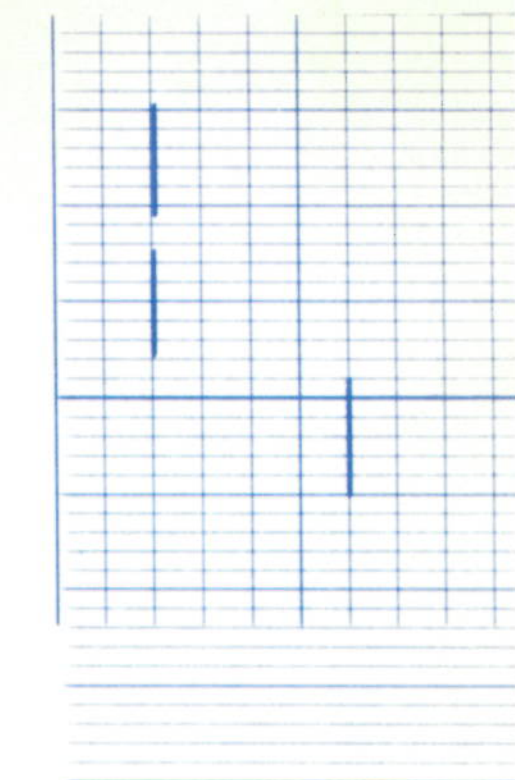
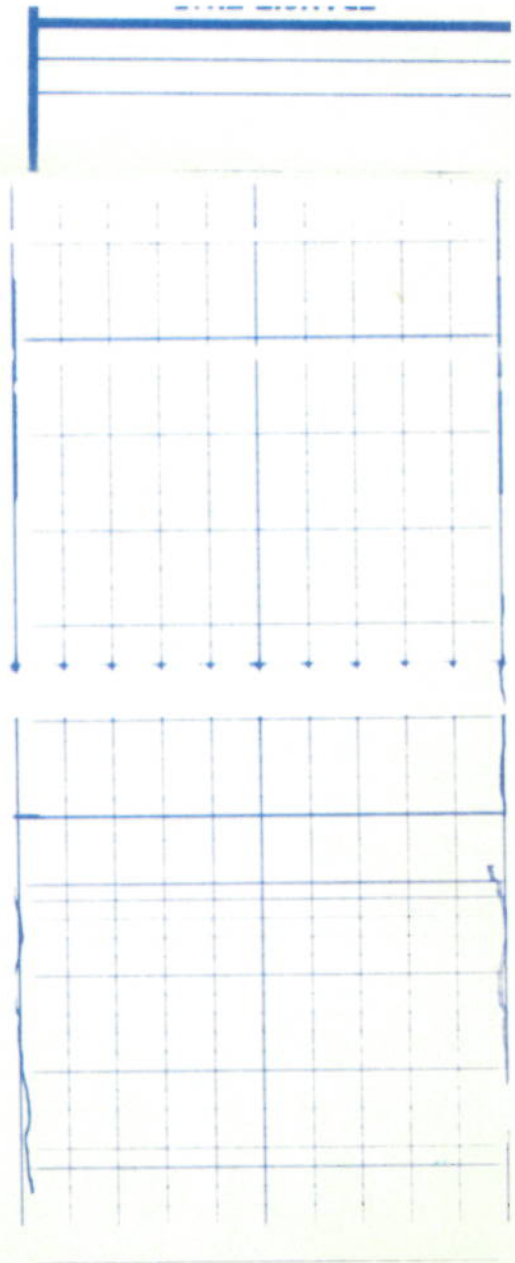




6400

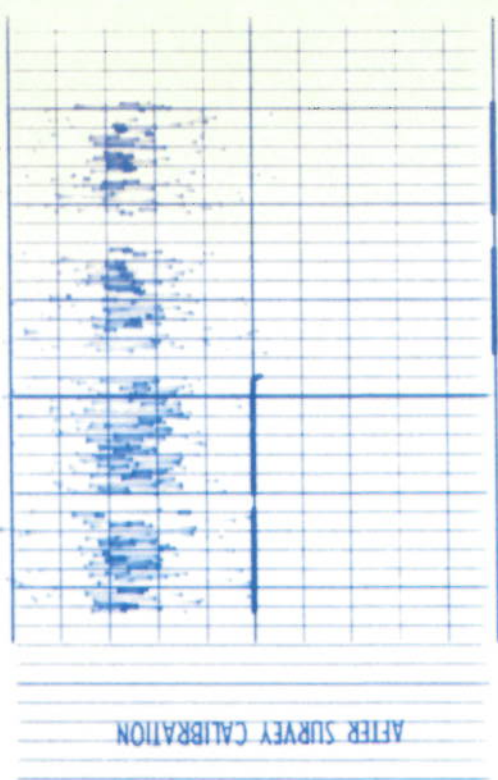
6500





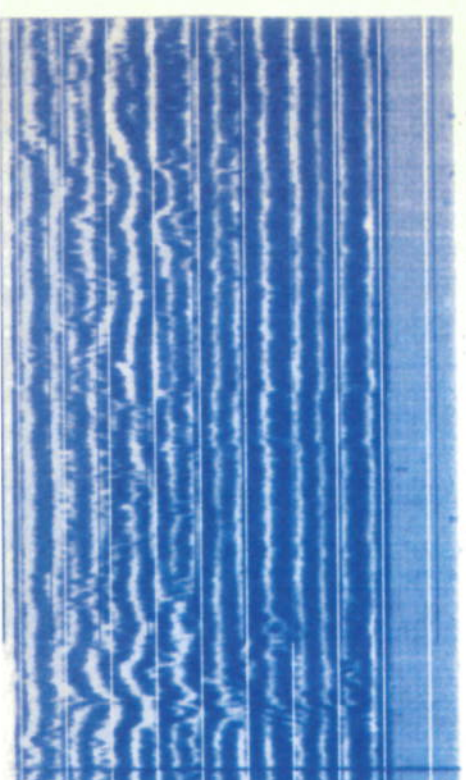
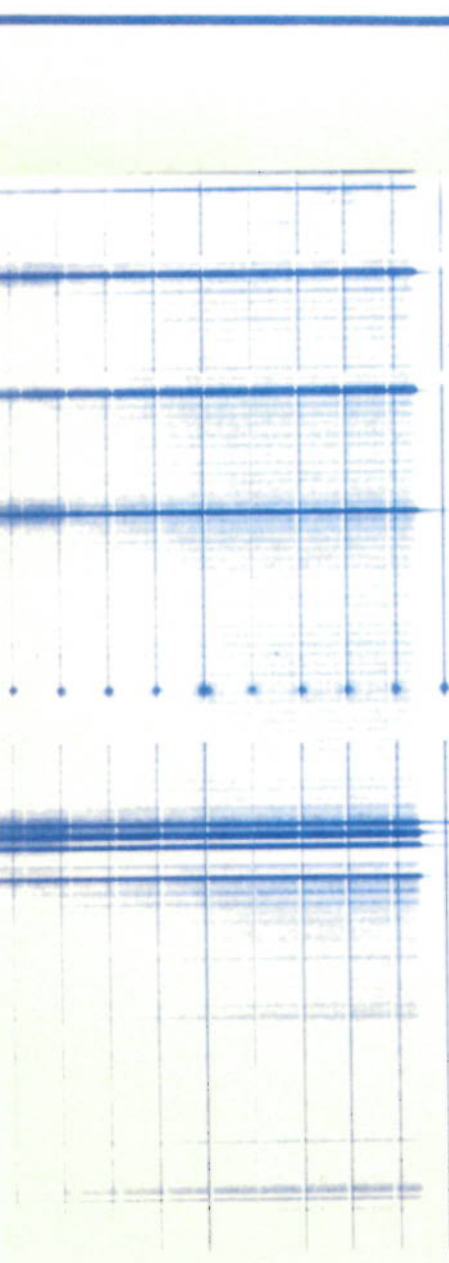
10000000

GR CALIBRATION



AFTER SURVEY CALIBRATION

Casing Collars
Corrected Depth



COMPANY	CHEVRON USA INC.
WELL	FEE 22
FIELD	RANGELY
COUNTY	RIO BLANCO
	STATE
	COLORADO
SCHL. FR	6550
SCHL. TD	6558
DRLR TD	6565
Elev:	
KB	5345
DF	-
GL	-

CEMENT BOND CALIBRATION CODING

TRANSIT TIME AMPLITUDE

1. MECHANICAL ZERO
2. 200 μ sec
3. 320 μ sec
4. 400 μ sec

ELECTRICAL ZERO
CALIBRATE 50 MV (SLP-J SERIES)
CALIBRATE 50 MV

DEPTH	GAMMA RAY	
	API UNITS	
0	TRANSIT TIME	
	MICROSECONDS	
50	SPACING	
	200	
200	CASING BOND	
	MILLIVOLTS	
1200	VARIABLE DENSITY	
	MICROSECONDS	
5	SPACING	
	1200	