



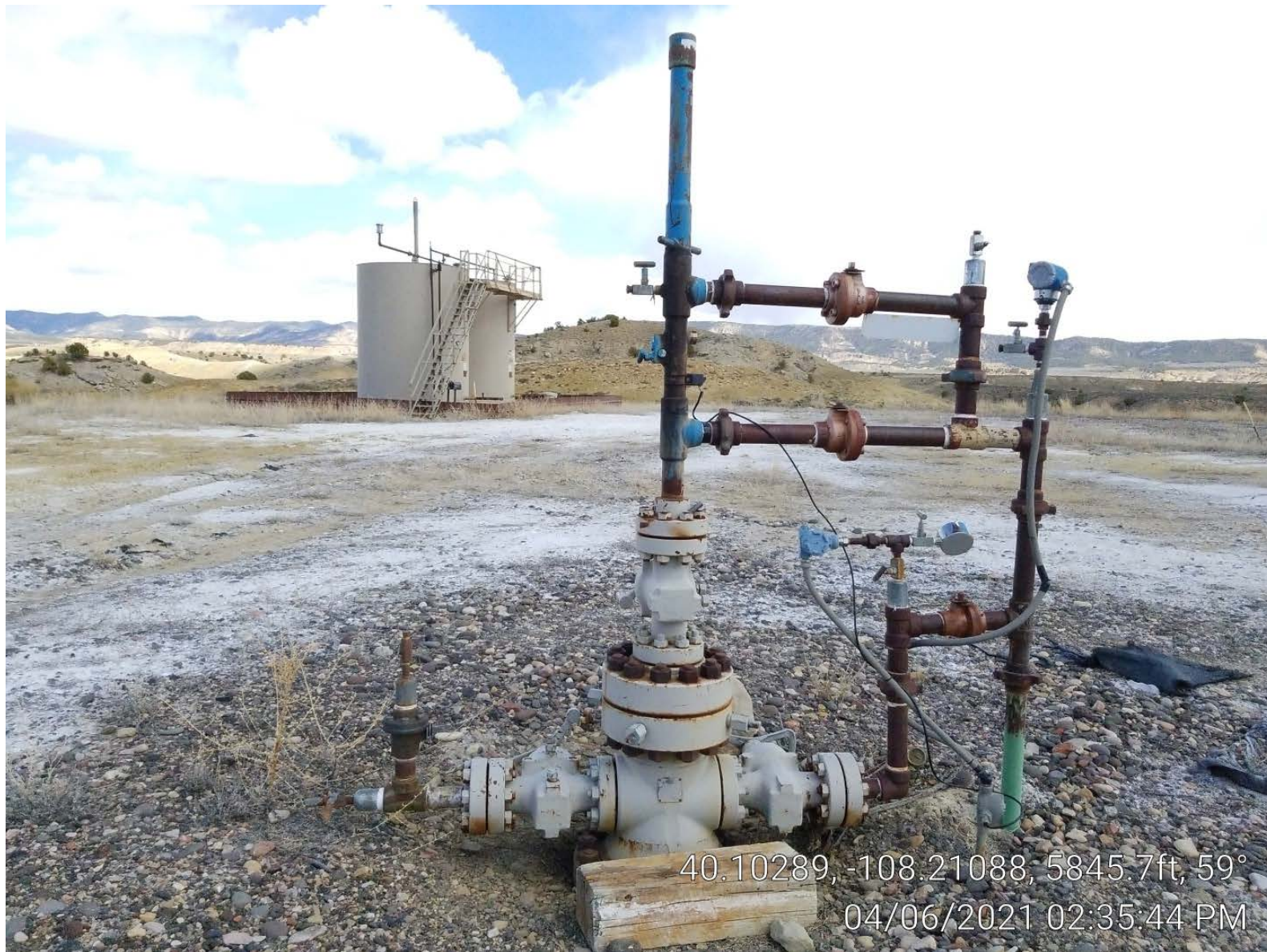
40.10259, -108.21113, 5856.0ft, 57°
04/06/2021 02:49:03 PM



COLORADO
Oil & Gas Conservation
Commission
Department of Natural Resources

Photo 1. Location.

Ant Hill Unit Wyatt 31-12 API: 05-103-10291
Inspection: 701500216



40.10289, -108.21088, 5845.7ft, 59°
04/06/2021 02:35:44 PM



COLORADO
Oil & Gas Conservation
Commission
Department of Natural Resources

Photo 2. Well & tanks.

Ant Hill Unit Wyatt 31-12 API: 05-103-10291
Inspection: 701500216



COLORADO
Oil & Gas Conservation
Commission
Department of Natural Resources

Photo 3. Meter building & separator.

Ant Hill Unit Wyatt 31-12 API: 05-103-10291
Inspection: 701500216



COLORADO
Oil & Gas Conservation
Commission
Department of Natural Resources

Photo 4. Tanks.

Ant Hill Unit Wyatt 31-12 API: 05-103-10291
Inspection: 701500216





40.10293, -108.21059, 5839.2ft, 112°
04/06/2021 02:38:37 PM



COLORADO
Oil & Gas Conservation
Commission
Department of Natural Resources

Photo 6. Debris.

Ant Hill Unit Wyatt 31-12 API: 05-103-10291
Inspection: 701500216



40.10275, -108.21099, 5866.1ft, 277°
04/06/2021 02:47:15 PM



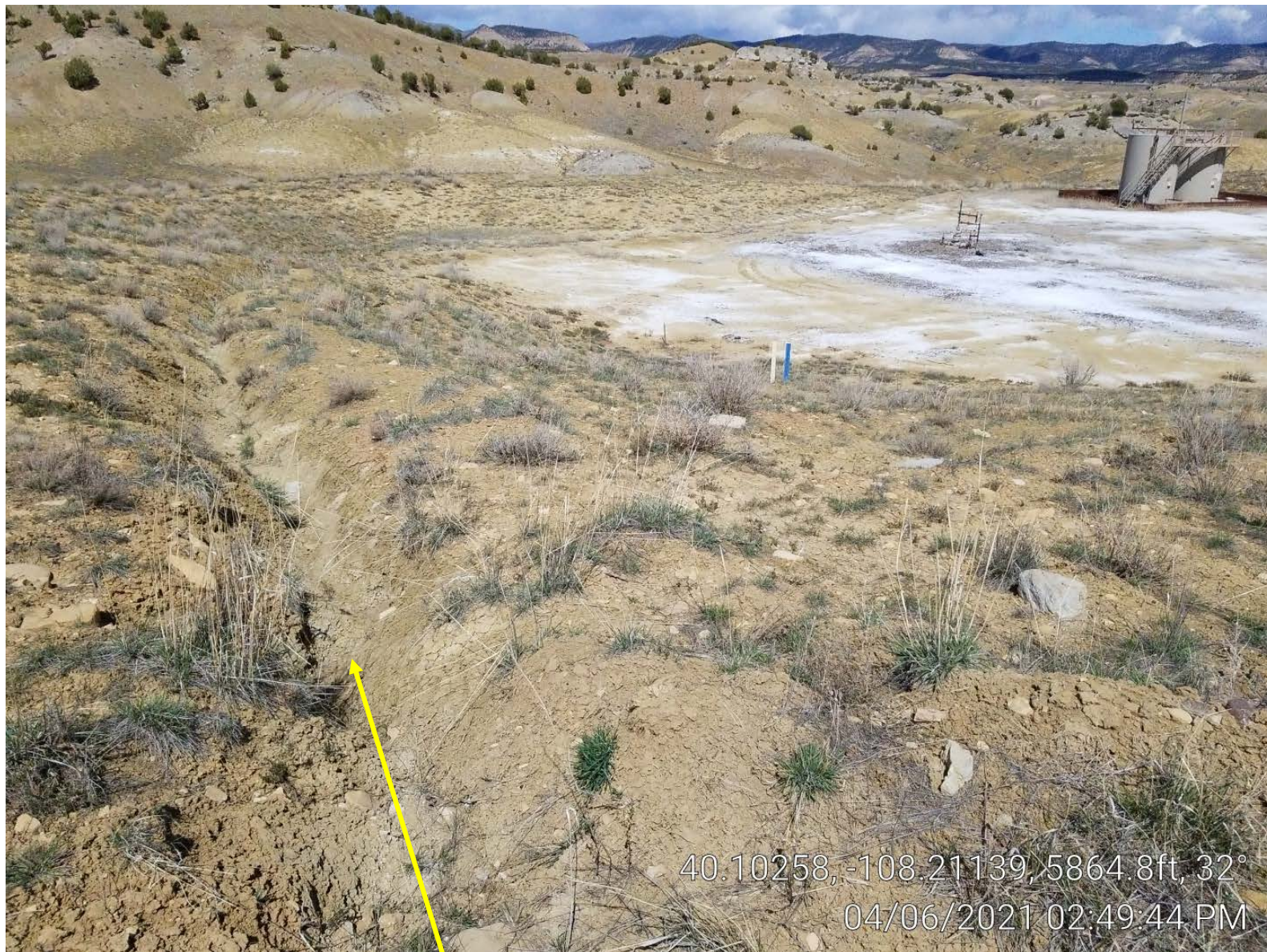
COLORADO
Oil & Gas Conservation
Commission
Department of Natural Resources

Photo 7. Sediment flow unto location.

Ant Hill Unit Wyatt 31-12 API: 05-103-10291
Inspection: 701500216



40.10292, -108.21072, 5834.6ft, 119°
04/06/2021 02:39:03 PM



40.10258, -108.21139, 5864.8ft, 32°
04/06/2021 02:49:44 PM



COLORADO
Oil & Gas Conservation
Commission
Department of Natural Resources

Photo 9. Start of storm water ditch around location.

Ant Hill Unit Wyatt 31-12 API: 05-103-10291
Inspection: 701500216



40.10306, -108.21056, 5840.2ft, 58°
04/06/2021 02:40:27 PM



COLORADO
Oil & Gas Conservation
Commission
Department of Natural Resources

Photo 10. Ditch leaving location near tanks.

Ant Hill Unit Wyatt 31-12 API: 05-103-10291
Inspection: 701500216



40.10314, -108.2104, 5836.5ft, 192°
04/06/2021 02:41:09 PM

