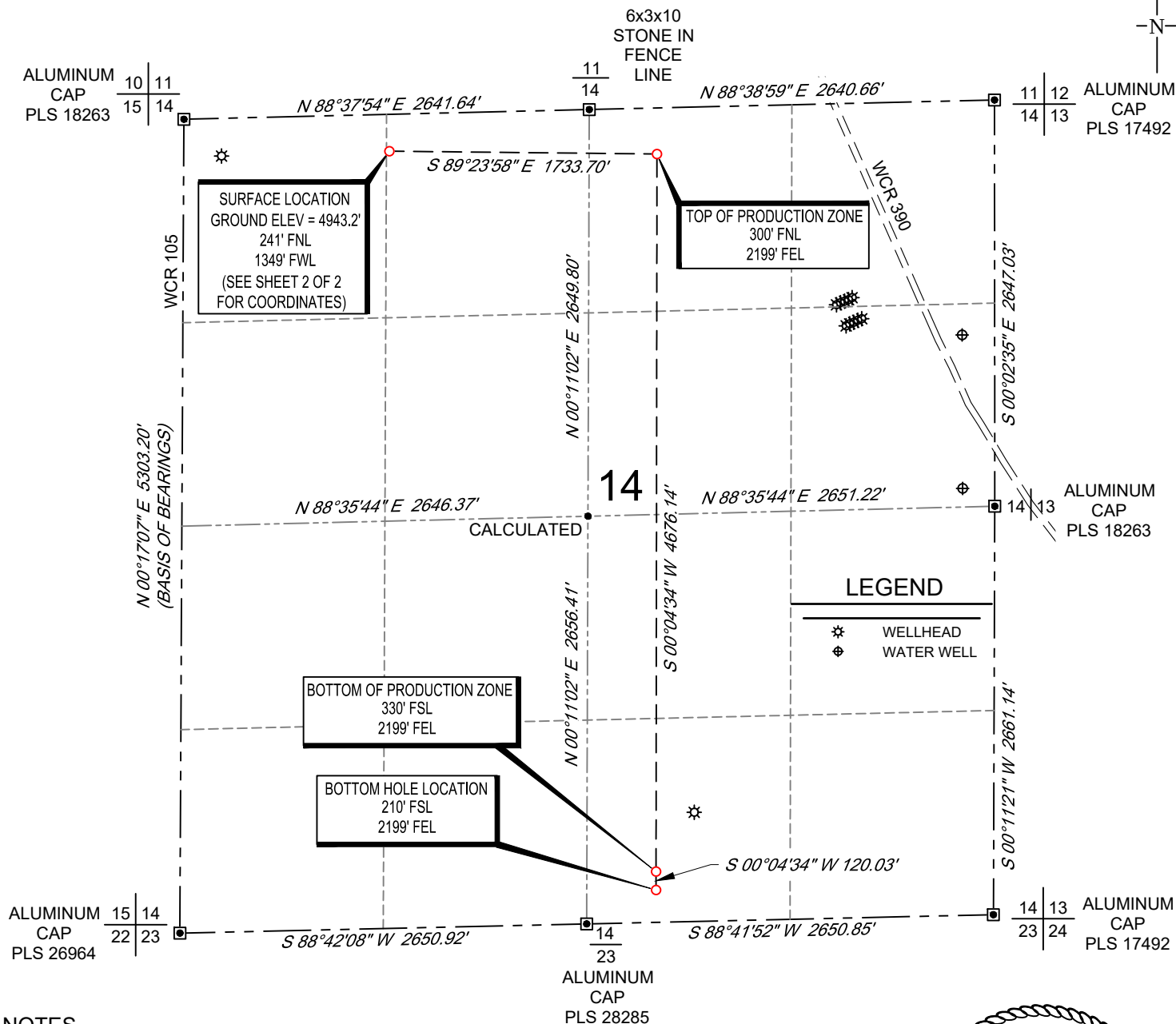


SCALE: 1" = 1000'

0' 500' 1000'

WELL LOCATION MAP

SHL NE/4 NW/4, SECTION 14, TOWNSHIP 8-N, RANGE 60-W
 TPZ NW/4 NE/4, SECTION 14, TOWNSHIP 8-N, RANGE 60-W
 BPZ / BHL SW/4 SE/4, SECTION 14, TOWNSHIP 8-N, RANGE 60-W
 WELD COUNTY, COLORADO



NOTES

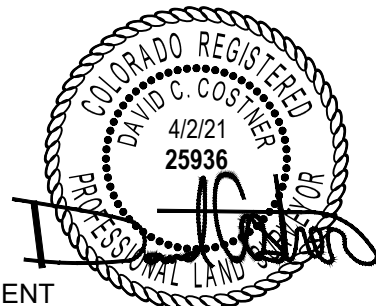
1. Horizontal (NAD 83) and vertical (NAVD 88) datum is based on the Trimble VRS Network or OPUS Solution. The lineal units of measurement are U.S. Survey Foot.
2. All directions, distances, and dimensions shown hereon are based on coordinates from the "Colorado coordinate system of 1983 north zone" (article 52 of title 38, C.R.S.).
3. All section line dimensions shown hereon are based on field measurements of existing monuments and/or physical evidence found in the field unless otherwise indicated.
4. Physical features shown hereon are for graphical representation only.
5. See Form 2A, if applicable for visible improvements within 500' of wellhead.
6. Distances to nearest section lines are measured perpendicularly.
7. This is not a land survey nor land survey plat.

PDOP Reading: 1.5 Instrument Operator: **Brent Garcia**

Date Surveyed: **05/24/2018**

SURVEYOR'S STATEMENT

The undersigned hereby states that the well location shown hereon was staked on the ground based on existing monumentation and/or physical evidence found in the field and is correct to the best of my knowledge, information and belief.



VERDAD RESOURCES
 SCHNEIDER 1414-02H
 JOB NO. 117800

JLS	06/11/2018	REVISION:	
SHEET :	1 OF 2	INT	DATE
FILE:LO_SCHNEIDER_1414_02H_REV4	PAV	04/02/2021	



COORDINATE TABLE



ABBREVIATIONS LEGEND:

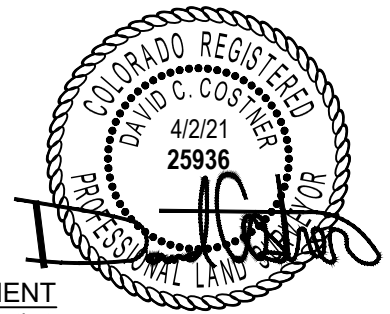
SURFACE HOLE LOCATION	(SHL)
LANDING POINT LOCATION	(LP)
TOP OF PRODUCTION ZONE	(TPZ)
BOTTOM OF PRODUCTION ZONE	(BPZ)
BOTTOM HOLE LOCATION	(BHL)
LATITUDE NAD 83	(LAT.83)
LONGITUDE NAD 83	(LONG.83)
LATITUDE NAD 27	(LAT.27)
LONGITUDE NAD 27	(LONG.27)
COLORADO COORDINATE SYSTEM OF 1983 NORTH ZONE	(SPC83)
COLORADO COORDINATE SYSTEM OF 1927 NORTH ZONE	(SPC27)

Note:

1. All (SPC83) and (SPC27) coordinate values are U.S. Survey Feet.
2. All Latitude and Longitude values are decimal degrees.

SCHNEIDER 1414-02H

	(LAT.83)	(LONG.83)	NORTHING EASTING		(LAT.27)	(LONG.27)	NORTHING EASTING	
			(SPC83)	(SPC83)			(SPC27)	(SPC27)
(SHL)	N40.6691021	W104.0624950	1489828.85	3398753.30	N40.6691155	W104.0619904	489827.46	2398903.82
(TPZ)	N40.6689749	W104.0562475	1489810.69	3400486.91	N40.6689882	W104.0557429	489809.27	2400637.48
(BPZ)	N40.6561417	W104.0565443	1485134.55	3400480.70	N40.6561550	W104.0560395	485133.22	2400631.34
(BQA)	N40.6558123	W104.0565519	1485014.51	3400480.54	N40.6558256	W104.0560472	485013.19	2400631.18



SURVEYOR'S STATEMENT

The undersigned hereby states that the well location shown hereon was staked on the ground based on existing monumentation and/or physical evidence found in the field and is correct to the best of my knowledge, information and belief.



VERDAD RESOURCES
SCHNEIDER 1414-02H
JOB NO. 117800

JLS	06/11/2018	REVISION:	
SHEET :	2 OF 2	INT	DATE
FILE:LO_SCHNEIDER_1414_02H_REV4	PAV	04/02/2021	