

Foundation Energy Management LLC, Fonte 32-22
125-09369

Inspection #688310249

3/31/2021

Routine Inspection

FOUNDATION
ENERGY MANAGEMENT, LLC

FONTE 31-22

NWNE Sec.22-T1N-R45W,
Rd. Z & 33, West 3/4 Mile, South into
Yuma County, CO

IN CASE OF EMERGENCY CALL 911
1-866-767-3600

FOUNDATION ENERGY

FONTE No. 32-22

SW NE SEC. 22-1N-45W
1/2 MILE S OF ROADS
33 & X.5 & E INTO
YUMA COUNTY, CO

IN CASE OF EMERGENCY CALL 911
1-866-767-3600

Colorado Oil and Gas Conservation Commission

40.04662, -102.38574, 3750.0ft, 162°

03/31/2021 03:49:51 PM



FOUNDATION ENERGY

FONTE No. 32-22

SW NE SEC. 22-1N-45W

1/2 MILE S OF ROADS

33 & X.5 & E INTO

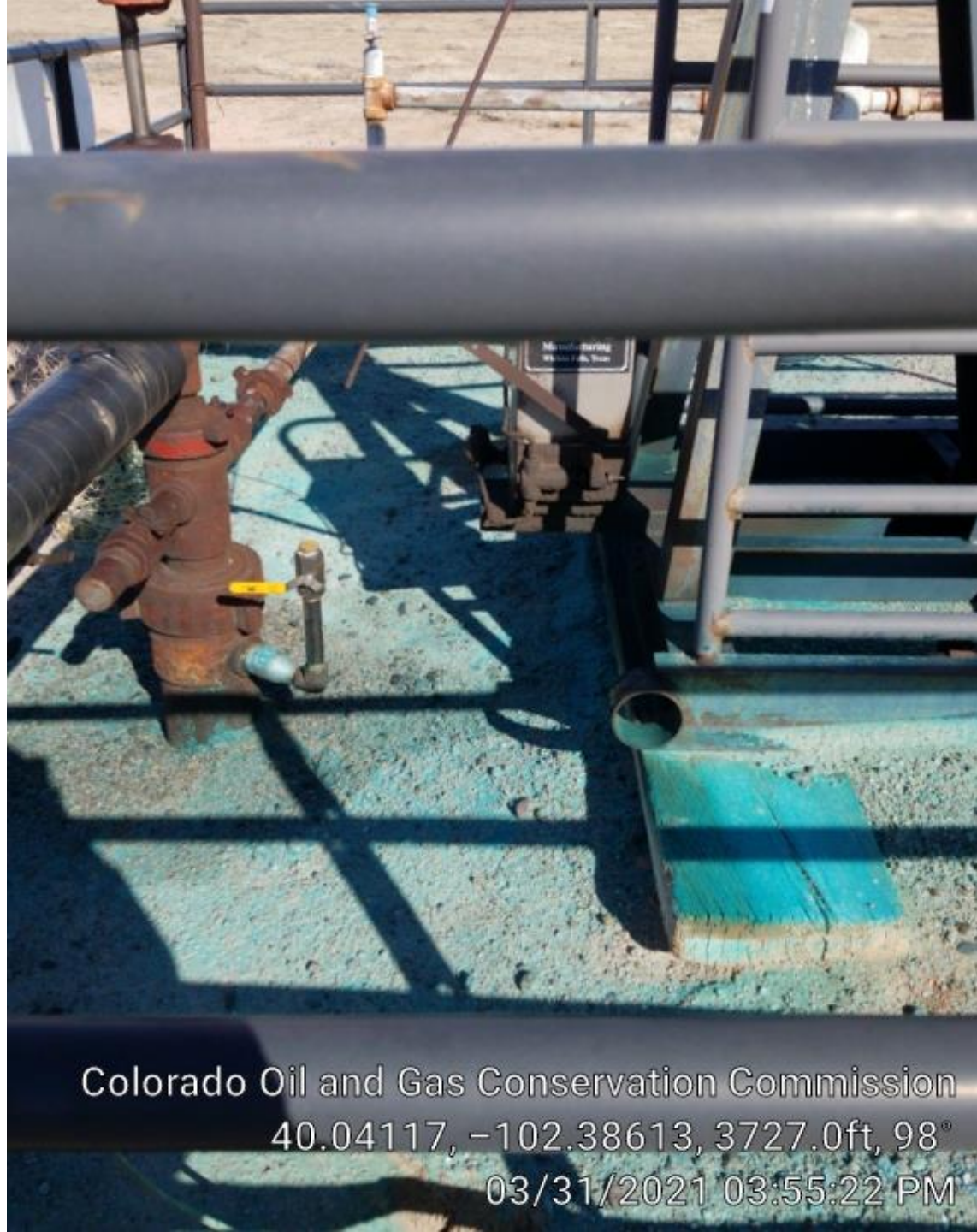
YUMA COUNTY, CO

IN CASE OF EMERGENCY CALL 811
1-866-767-3600

Colorado Oil and Gas Conservation Commission
40.04117, -102.38614, 3723.8ft, 68°
03/31/2021 03:55:19 PM



Colorado Oil and Gas Conservation Commission
40.04117, -102.38613, 3727.0ft, 134°
03/31/2021 03:55:26 PM



Colorado Oil and Gas Conservation Commission
40.04117, -102.38613, 3727.0ft, 98°
03/31/2021 03:55:22 PM