

Foundation Energy Management LLC, Rockwell 44-15  
125-09216

Inspection #688310243

3/31/2021

Routine Inspection

FOUNDATION ENERGY

ROCKWELL No. 44-15

SE SE SEC. 15-1N-45W

1/8 MILE W OF ROADS

Z & 33 & N INTO

YUMA COUNTY, CO

24 - CASE OF EMERGENCY CALL  
1-866-767-3600

Colorado Oil and Gas Conservation Commission  
40.04672, -102.38133, 3750.0ft, 338°  
03/31/2021 03:17:27 PM

FOUNDATION ENERGY  
ROCKWELL No. 44-15  
SE SE SEC. 15-1N-45W  
1/8 MILE W OF ROADS  
Z & 33 & N INTO  
YUMA COUNTY, CO

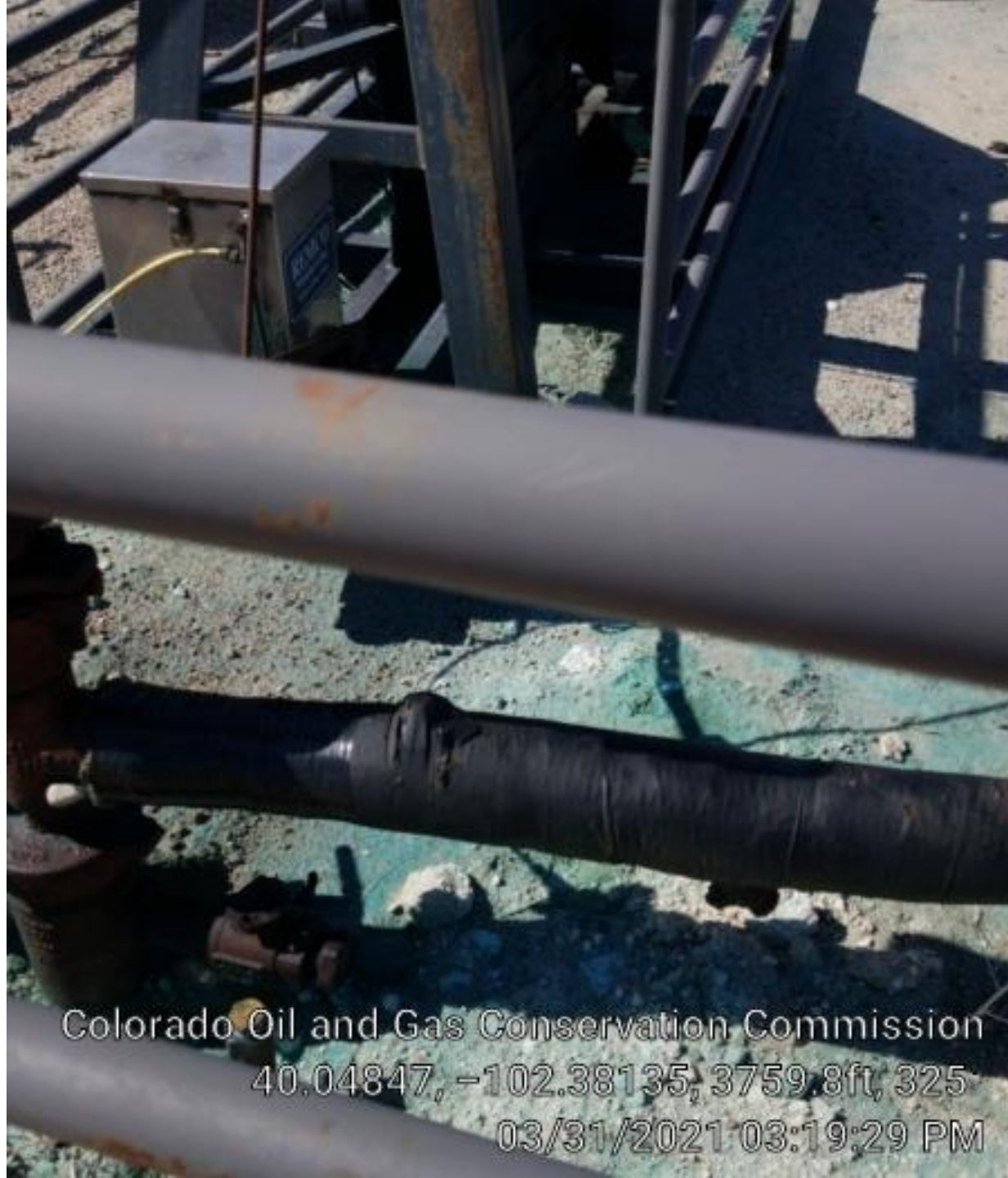
STATE OF EMERGENCY  
1-866-767-3600

Colorado Oil and Gas Conservation Commission  
40.04847, -102.38142, 3759.8ft, 55°  
03/31/2021 03:19:13 PM





Colorado Oil and Gas Conservation Commission  
40.04847, -102.38133, 3763.1ft, 309°  
03/31/2021 03:19:39 PM



Colorado Oil and Gas Conservation Commission  
40.04847, -102.38135, 3759.8ft, 325  
03/31/2021 03:19:29 PM





Colorado Oil and Gas Conservation Commission  
40.04849, -102.38141, 3763.1ft, 89°  
03/31/2021 03:20:08 PM

Colorado Oil and Gas Conservation Commission  
40.04849, -102.38142, 3763.1ft, 150°  
03/31/2021 03:20:26 PM



Colorado Oil and Gas Conservation Commission  
40.04845, -102.38139, 3759.8ft, 183°  
03/31/2021 03:19:21 PM