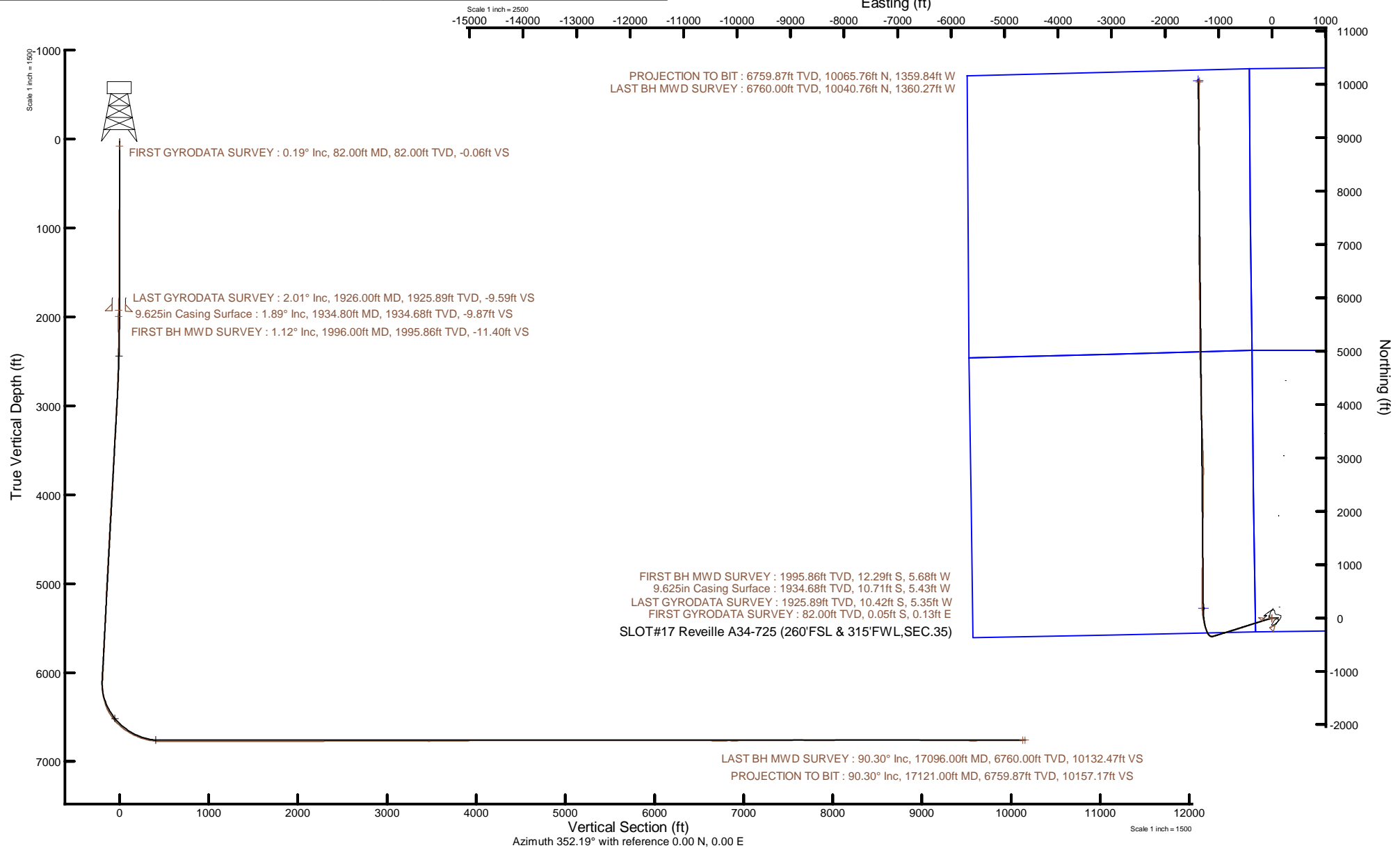


NOBLE ENERGY, INC



Location: COLORADO Slot: SLOT#17 Reveille A34-725 (260'FSL & 315'FWL,SEC.35)
Field: WELD COUNTY (NOBLE NAD 83 GRID) Well: Reveille A34-725
Facility: SEC.35-T06N-R64W Wellbore: Reveille A34-725 PWB

Plot reference wellpath is Reveille A34-725 PWP Rev-A.0	Grid System: NAD83 / Lambert Colorado SP, Northern Zone (501), US feet
True vertical depths are referenced to H&P 517 (30) (RT)	North Reference: Grid north
Reference wellpath measured depths are referenced to H&P 517 (30) (RT)	Scale: True distance
H&P 517 (30) (RT) to Mean Sea Level: 4680 feet	Coordinates are in feet referenced to Slot
Mean Sea Level to Mud line (At Slot: SLOT#17 Reveille A34-725 (260'FSL & 315'FWL,SEC.35)): 0 feet	Depths are in feet
Offset wellpath MDs are referenced to each path's default MD datum	Created by: painsetr on 2021-01-11; Database: WellArchitectDB



REFERENCE WELLPATH IDENTIFICATION

Operator	NOBLE ENERGY, INC	Well	Reveille A34-725
Field	WELD COUNTY (NOBLE NAD 83 GRID)	API/Legal	
Facility	SEC.35-T06N-R64W	Wellbore	Reveille A34-725 AWB
Slot	SLOT#17 Reveille A34-725 (260'FSL & 315'FWL,SEC.35)		

REPORT SETUP INFORMATION

Projection System	NAD83 / Lambert Colorado SP, Northern Zone (501), US feet	Software System	WellArchitect® 6.0
North Reference	Grid	User	Painsetr
Scale	0.999962	Report Generated	1/11/2021 at 12:50:06 PM
Convergence at slot	0.63° East	Database	WellArchitectDB

WELLPATH LOCATION

	Local coordinates		Grid coordinates		Geographic coordinates	
	North[ft]	East[ft]	Easting[US ft]	Northing[US ft]	Latitude	Longitude
Slot Location	-1917.63	-123.97	3271214.84	1403285.17	40.4363294°	-104.5256530°
Facility Reference Pt			3271338.81	1405202.72	40.4415890°	-104.5251320°
Field Reference Pt			3000000.00	4454105.15	48.7761986°	-105.5000000°

WELLPATH DATUM

Calculation method	Minimum curvature	H&P 517 (30') (RT) to Facility Vertical Datum	4680.00ft
Horizontal Reference Pt	Slot	H&P 517 (30') (RT) to Mean Sea Level	4680.00ft
Vertical Reference Pt	H&P 517 (30') (RT)	H&P 517 (30') (RT) to Mud Line at Slot (SLOT#17 Reveille A34-725 (260'FSL & 315'FWL,SEC.35))	4680.00ft
MD Reference Pt	H&P 517 (30') (RT)	Section Origin	N 0.00, E 0.00 ft
Field Vertical Reference	Mean Sea Level	Section Azimuth	352.19°

REFERENCE WELLPATH IDENTIFICATION

Operator	NOBLE ENERGY, INC	Well	Reveille A34-725
Field	WELD COUNTY (NOBLE NAD 83 GRID)	API/Legal	
Facility	SEC.35-T06N-R64W	Wellbore	Reveille A34-725 AWB
Slot	SLOT#17 Reveille A34-725 (260'FSL & 315'FWL,SEC.35)		

WELLPATH DATA (180 stations)

MD [ft]	Inclination [°]	Azimuth [°]	TVD [ft]	Vert Sect [ft]	North [ft]	East [ft]	Grid East [US ft]	Grid North [US ft]	Latitude	Longitude	DLS [°/100ft]	Comments
0.00	0.000	109.550	0.00	0.00	0.00	0.00	3271214.84	1403285.17	40.4363294	-104.5256530	0.00	
82.00	0.190	109.550	82.00	-0.06	-0.05	0.13	3271214.97	1403285.12	40.4363292	-104.5256526	0.23	FIRST GYRODATA SURVEY
175.00	0.150	150.100	175.00	-0.25	-0.20	0.33	3271215.17	1403284.97	40.4363288	-104.5256518	0.13	
266.00	0.150	36.000	266.00	-0.27	-0.21	0.46	3271215.30	1403284.96	40.4363288	-104.5256514	0.28	
361.00	0.120	315.870	361.00	-0.10	-0.04	0.47	3271215.31	1403285.13	40.4363293	-104.5256514	0.18	
455.00	0.530	229.960	455.00	-0.25	-0.25	0.07	3271214.91	1403284.92	40.4363287	-104.5256528	0.57	
550.00	0.220	267.140	550.00	-0.47	-0.54	-0.45	3271214.39	1403284.63	40.4363279	-104.5256547	0.40	
645.00	0.480	255.340	644.99	-0.50	-0.65	-1.02	3271213.82	1403284.52	40.4363276	-104.5256567	0.28	
739.00	0.160	261.920	738.99	-0.55	-0.77	-1.53	3271213.31	1403284.40	40.4363273	-104.5256586	0.34	
834.00	0.320	210.770	833.99	-0.76	-1.01	-1.80	3271213.04	1403284.16	40.4363266	-104.5256595	0.27	
928.00	0.260	181.940	927.99	-1.17	-1.45	-1.94	3271212.90	1403283.72	40.4363254	-104.5256601	0.17	
1023.00	0.210	201.020	1022.99	-1.54	-1.83	-2.01	3271212.83	1403283.34	40.4363244	-104.5256603	0.10	
1118.00	0.060	92.460	1117.99	-1.70	-1.99	-2.02	3271212.82	1403283.18	40.4363240	-104.5256604	0.25	
1213.00	0.150	221.580	1212.99	-1.79	-2.09	-2.05	3271212.79	1403283.08	40.4363237	-104.5256605	0.20	
1307.00	0.380	212.500	1306.99	-2.11	-2.44	-2.30	3271212.54	1403282.73	40.4363227	-104.5256614	0.25	
1402.00	0.280	265.630	1401.99	-2.33	-2.73	-2.70	3271212.14	1403282.44	40.4363220	-104.5256629	0.32	
1497.00	0.330	247.440	1496.99	-2.39	-2.85	-3.19	3271211.65	1403282.32	40.4363216	-104.5256646	0.11	
1592.00	0.380	178.660	1591.98	-2.77	-3.27	-3.43	3271211.41	1403281.90	40.4363205	-104.5256655	0.42	
1686.00	0.810	197.560	1685.98	-3.68	-4.22	-3.63	3271211.21	1403280.95	40.4363179	-104.5256662	0.50	
1781.00	1.370	196.030	1780.96	-5.33	-5.95	-4.14	3271210.70	1403279.22	40.4363132	-104.5256682	0.59	
1876.00	2.070	194.940	1875.92	-7.95	-8.70	-4.90	3271209.94	1403276.47	40.4363056	-104.5256710	0.74	
1926.00	2.010	194.660	1925.89	-9.59	-10.42	-5.35	3271209.49	1403274.75	40.4363009	-104.5256727	0.12	LAST GYRODATA SURVEY
1996.00	1.120	181.680	1995.86	-11.40	-12.29	-5.68	3271209.16	1403272.88	40.4362958	-104.5256739	1.36	FIRST BH MWD SURVEY
2090.00	0.610	332.330	2089.85	-11.84	-12.76	-5.94	3271208.90	1403272.41	40.4362945	-104.5256749	1.79	
2185.00	5.170	281.760	2184.71	-9.93	-11.44	-10.37	3271204.47	1403273.73	40.4362983	-104.5256907	5.06	
2279.00	6.220	251.800	2278.27	-9.43	-12.17	-19.36	3271195.48	1403273.00	40.4362965	-104.5257231	3.31	
2374.00	5.660	254.700	2372.76	-10.97	-15.01	-28.77	3271186.08	1403270.16	40.4362890	-104.5257570	0.67	
2469.00	7.410	254.000	2467.14	-12.45	-17.94	-39.17	3271175.67	1403267.23	40.4362813	-104.5257945	1.84	
2563.00	8.950	256.290	2560.18	-14.07	-21.34	-52.10	3271162.74	1403263.83	40.4362724	-104.5258410	1.67	
2658.00	11.740	253.750	2653.63	-16.25	-25.80	-68.57	3271146.28	1403259.37	40.4362606	-104.5259004	2.98	

REFERENCE WELLPATH IDENTIFICATION

Operator	NOBLE ENERGY, INC	Well	Reveille A34-725
Field	WELD COUNTY (NOBLE NAD 83 GRID)	API/Legal	
Facility	SEC.35-T06N-R64W	Wellbore	Reveille A34-725 AWB
Slot	SLOT#17 Reveille A34-725 (260'FSL & 315'FWL,SEC.35)		

WELLPATH DATA (180 stations)

MD [ft]	Inclination [°]	Azimuth [°]	TVD [ft]	Vert Sect [ft]	North [ft]	East [ft]	Grid East [US ft]	Grid North [US ft]	Latitude	Longitude	DLS [°/100ft]	Comments
2752.00	16.480	257.970	2744.77	-18.63	-31.26	-90.80	3271124.04	1403253.91	40.4362463	-104.5259804	5.16	
2847.00	18.890	254.390	2835.27	-21.71	-38.21	-118.80	3271096.05	1403246.97	40.4362281	-104.5260813	2.78	
2942.00	17.930	251.620	2925.41	-26.49	-46.95	-147.48	3271067.36	1403238.22	40.4362049	-104.5261847	1.37	
3036.00	18.330	252.440	3014.74	-31.64	-55.98	-175.31	3271039.54	1403229.20	40.4361810	-104.5262850	0.50	
3226.00	17.020	251.600	3195.77	-41.82	-73.77	-230.18	3270984.67	1403211.40	40.4361338	-104.5264828	0.70	
3320.00	17.810	252.710	3285.46	-46.71	-82.38	-256.96	3270957.89	1403202.79	40.4361110	-104.5265793	0.91	
3415.00	17.770	252.370	3375.92	-51.58	-91.09	-284.65	3270930.20	1403194.08	40.4360879	-104.5266791	0.12	
3509.00	17.540	254.590	3465.49	-55.90	-99.20	-311.97	3270902.88	1403185.97	40.4360665	-104.5267776	0.76	
3604.00	17.690	252.150	3556.04	-60.31	-107.43	-339.51	3270875.34	1403177.75	40.4360447	-104.5268768	0.79	
3699.00	17.770	251.470	3646.53	-65.53	-116.46	-367.00	3270847.86	1403168.71	40.4360208	-104.5269759	0.23	
3793.00	17.630	251.170	3736.08	-70.92	-125.61	-394.07	3270820.78	1403159.56	40.4359965	-104.5270735	0.18	
3888.00	17.610	251.530	3826.62	-76.33	-134.81	-421.32	3270793.54	1403150.37	40.4359721	-104.5271718	0.12	
3982.00	17.240	251.770	3916.31	-81.48	-143.67	-448.04	3270766.82	1403141.50	40.4359485	-104.5272681	0.40	
4077.00	17.330	251.710	4007.02	-86.60	-152.52	-474.84	3270740.02	1403132.66	40.4359251	-104.5273647	0.10	
4171.00	17.360	251.170	4096.74	-91.83	-161.44	-501.41	3270713.45	1403123.74	40.4359014	-104.5274605	0.17	
4266.00	17.850	251.110	4187.29	-97.34	-170.72	-528.60	3270686.26	1403114.45	40.4358767	-104.5275585	0.52	
4361.00	17.870	252.070	4277.72	-102.70	-179.93	-556.24	3270658.62	1403105.25	40.4358523	-104.5276582	0.31	
4455.00	17.390	251.990	4367.30	-107.72	-188.71	-583.32	3270631.54	1403096.47	40.4358290	-104.5277558	0.51	
4550.00	17.340	252.690	4457.97	-112.57	-197.31	-610.34	3270604.53	1403087.87	40.4358062	-104.5278532	0.23	
4645.00	17.370	252.450	4548.65	-117.31	-205.80	-637.38	3270577.49	1403079.38	40.4357837	-104.5279507	0.08	
4739.00	17.520	252.150	4638.32	-122.15	-214.37	-664.22	3270550.64	1403070.81	40.4357610	-104.5280474	0.19	
4928.00	17.490	253.040	4818.57	-131.63	-231.37	-718.47	3270496.40	1403053.81	40.4357160	-104.5282429	0.14	
5023.00	17.760	252.530	4909.11	-136.33	-239.89	-745.94	3270468.93	1403045.29	40.4356934	-104.5283420	0.33	
5117.00	17.800	252.160	4998.62	-141.24	-248.59	-773.29	3270441.58	1403036.59	40.4356703	-104.5284406	0.13	
5212.00	16.690	255.720	5089.35	-145.31	-256.40	-800.34	3270414.53	1403028.78	40.4356497	-104.5285380	1.61	
5306.00	17.880	257.330	5179.10	-148.06	-262.90	-827.50	3270387.37	1403022.28	40.4356327	-104.5286358	1.36	
5400.00	16.760	253.580	5268.84	-151.31	-269.90	-854.58	3270360.29	1403015.28	40.4356143	-104.5287334	1.68	
5495.00	17.620	252.440	5359.60	-155.80	-278.11	-881.43	3270333.45	1403007.07	40.4355926	-104.5288302	0.97	
5589.00	17.620	252.590	5449.19	-160.58	-286.66	-908.57	3270306.31	1402998.53	40.4355699	-104.5289280	0.05	
5684.00	17.560	252.750	5539.75	-165.33	-295.21	-935.97	3270278.90	1402989.97	40.4355473	-104.5290268	0.08	

REFERENCE WELLPATH IDENTIFICATION

Operator	NOBLE ENERGY, INC	Well	Reveille A34-725
Field	WELD COUNTY (NOBLE NAD 83 GRID)	API/Legal	
Facility	SEC.35-T06N-R64W	Wellbore	Reveille A34-725 AWB
Slot	SLOT#17 Reveille A34-725 (260'FSL & 315'FWL,SEC.35)		

WELLPATH DATA (180 stations)

MD [ft]	Inclination [°]	Azimuth [°]	TVD [ft]	Vert Sect [ft]	North [ft]	East [ft]	Grid East [US ft]	Grid North [US ft]	Latitude	Longitude	DLS [°/100ft]	Comments
5778.00	17.680	253.300	5629.34	-169.86	-303.51	-963.19	3270251.69	1402981.67	40.4355253	-104.5291248	0.22	
5873.00	16.860	256.460	5720.06	-173.47	-310.89	-990.40	3270224.48	1402974.30	40.4355059	-104.5292229	1.31	
5968.00	17.700	251.380	5810.77	-177.55	-318.72	-1017.48	3270197.40	1402966.46	40.4354852	-104.5293205	1.82	
6062.00	17.460	256.280	5900.39	-181.69	-326.63	-1044.72	3270170.16	1402958.55	40.4354643	-104.5294186	1.59	
6157.00	17.160	253.100	5991.09	-185.37	-334.08	-1071.98	3270142.90	1402951.10	40.4354447	-104.5295168	1.04	
6252.00	17.240	252.300	6081.84	-190.00	-342.44	-1098.80	3270116.09	1402942.74	40.4354225	-104.5296135	0.26	
6346.00	15.580	270.200	6172.06	-190.64	-346.63	-1124.71	3270090.17	1402938.55	40.4354118	-104.5297067	5.64	
6441.00	18.610	290.430	6262.94	-181.68	-341.29	-1151.70	3270063.18	1402943.89	40.4354273	-104.5298035	6.98	
6535.00	22.200	315.180	6351.19	-160.36	-323.42	-1178.33	3270036.55	1402961.76	40.4354771	-104.5298984	9.85	
6630.00	30.380	329.170	6436.37	-123.82	-289.97	-1203.36	3270011.53	1402995.21	40.4355697	-104.5299870	10.75	
6724.00	39.180	339.400	6513.57	-72.85	-241.63	-1226.06	3269988.83	1403043.55	40.4357030	-104.5300666	11.21	
6819.00	46.350	344.200	6583.28	-9.45	-180.37	-1246.00	3269968.89	1403104.80	40.4358718	-104.5301359	8.29	
6914.00	54.840	346.890	6643.54	63.40	-109.34	-1264.21	3269950.69	1403175.83	40.4360673	-104.5301985	9.20	
7009.00	62.370	349.010	6693.00	144.21	-30.09	-1281.06	3269933.83	1403255.08	40.4362853	-104.5302559	8.15	
7103.00	70.340	353.230	6730.68	230.21	54.91	-1294.24	3269920.65	1403340.07	40.4365190	-104.5302999	9.42	
7198.00	77.370	355.890	6757.09	321.31	145.69	-1302.85	3269912.04	1403430.85	40.4367684	-104.5303273	7.87	
7293.00	85.930	359.190	6770.87	414.79	239.49	-1306.85	3269908.04	1403524.65	40.4370260	-104.5303380	9.64	
7387.00	90.590	0.420	6773.73	507.90	333.42	-1307.17	3269907.72	1403618.58	40.4372838	-104.5303354	5.13	
7482.00	90.520	0.600	6772.81	601.89	428.41	-1306.32	3269908.57	1403713.57	40.4375445	-104.5303287	0.20	
7577.00	90.520	0.470	6771.94	695.88	523.40	-1305.44	3269909.45	1403808.55	40.4378052	-104.5303217	0.14	
7671.00	90.490	0.480	6771.12	788.90	617.40	-1304.66	3269910.23	1403902.54	40.4380632	-104.5303152	0.03	
7766.00	90.000	0.320	6770.71	882.92	712.39	-1303.99	3269910.90	1403997.54	40.4383239	-104.5303091	0.54	
7861.00	89.910	0.280	6770.78	976.98	807.39	-1303.50	3269911.39	1404092.53	40.4385847	-104.5303036	0.10	
7955.00	90.280	0.870	6770.63	1069.97	901.39	-1302.55	3269912.34	1404186.52	40.4388426	-104.5302965	0.74	
8050.00	89.820	0.900	6770.55	1163.88	996.38	-1301.09	3269913.81	1404281.51	40.4391033	-104.5302875	0.49	
8145.00	90.030	0.850	6770.67	1257.79	1091.36	-1299.64	3269915.26	1404376.49	40.4393640	-104.5302786	0.23	
8239.00	90.000	0.110	6770.65	1350.81	1185.36	-1298.85	3269916.04	1404470.48	40.4396219	-104.5302721	0.79	
8334.00	89.820	0.370	6770.79	1444.87	1280.36	-1298.45	3269916.44	1404565.48	40.4398827	-104.5302669	0.33	
8429.00	90.250	0.750	6770.74	1538.86	1375.35	-1297.52	3269917.37	1404660.47	40.4401434	-104.5302598	0.60	
8523.00	90.220	0.890	6770.35	1631.80	1469.34	-1296.18	3269918.72	1404754.46	40.4404013	-104.5302513	0.15	

REFERENCE WELLPATH IDENTIFICATION

Operator	NOBLE ENERGY, INC	Well	Reveille A34-725
Field	WELD COUNTY (NOBLE NAD 83 GRID)	API/Legal	
Facility	SEC.35-T06N-R64W	Wellbore	Reveille A34-725 AWB
Slot	SLOT#17 Reveille A34-725 (260'FSL & 315'FWL,SEC.35)		

WELLPATH DATA (180 stations)

MD [ft]	Inclination [°]	Azimuth [°]	TVD [ft]	Vert Sect [ft]	North [ft]	East [ft]	Grid East [US ft]	Grid North [US ft]	Latitude	Longitude	DLS [°/100ft]	Comments
8618.00	89.940	0.310	6770.22	1725.77	1564.34	-1295.18	3269919.71	1404849.45	40.4406620	-104.5302440	0.68	
8713.00	90.150	0.510	6770.14	1819.80	1659.34	-1294.50	3269920.39	1404944.44	40.4409227	-104.5302378	0.31	
8808.00	88.890	359.710	6770.94	1913.89	1754.33	-1294.32	3269920.57	1405039.43	40.4411834	-104.5302334	1.57	
8902.00	90.580	0.670	6771.37	2006.97	1848.32	-1294.01	3269920.88	1405133.42	40.4414414	-104.5302286	2.07	
8997.00	90.310	0.630	6770.64	2100.93	1943.31	-1292.93	3269921.96	1405228.41	40.4417021	-104.5302210	0.29	
9092.00	89.940	0.830	6770.43	2194.88	2038.31	-1291.72	3269923.17	1405323.39	40.4419628	-104.5302129	0.44	
9186.00	90.490	0.880	6770.08	2287.81	2132.29	-1290.32	3269924.57	1405417.38	40.4422207	-104.5302042	0.59	
9281.00	90.060	0.310	6769.62	2381.78	2227.29	-1289.33	3269925.56	1405512.37	40.4424814	-104.5301969	0.75	
9375.00	89.900	0.240	6769.65	2474.85	2321.29	-1288.88	3269926.01	1405606.36	40.4427394	-104.5301916	0.19	
9470.00	90.420	0.600	6769.39	2568.87	2416.28	-1288.18	3269926.71	1405701.36	40.4430001	-104.5301854	0.67	
9564.00	89.990	0.620	6769.05	2661.86	2510.28	-1287.18	3269927.71	1405795.35	40.4432581	-104.5301781	0.46	
9659.00	90.360	0.500	6768.76	2755.85	2605.27	-1286.25	3269928.64	1405890.34	40.4435188	-104.5301710	0.41	
9754.00	90.210	1.010	6768.29	2849.79	2700.26	-1285.00	3269929.89	1405985.32	40.4437795	-104.5301628	0.56	
9848.00	90.210	358.860	6767.94	2942.92	2794.26	-1285.11	3269929.78	1406079.31	40.4440375	-104.5301595	2.29	
9943.00	90.210	359.030	6767.60	3037.26	2889.24	-1286.86	3269928.03	1406174.29	40.4442982	-104.5301620	0.18	
10037.00	90.180	358.120	6767.28	3130.68	2983.21	-1289.20	3269925.70	1406268.26	40.4445562	-104.5301668	0.97	
10132.00	89.840	358.480	6767.26	3225.14	3078.17	-1292.01	3269922.88	1406363.21	40.4448169	-104.5301731	0.52	
10226.00	89.810	358.270	6767.55	3318.59	3172.13	-1294.68	3269920.21	1406457.17	40.4450749	-104.5301790	0.23	
10321.00	88.270	356.880	6769.14	3413.16	3267.02	-1298.70	3269916.19	1406552.06	40.4453355	-104.5301897	2.18	
10416.00	90.890	358.540	6769.84	3507.70	3361.93	-1302.49	3269912.40	1406646.97	40.4455961	-104.5301996	3.26	
10510.00	89.900	356.900	6769.19	3601.26	3455.85	-1306.23	3269908.66	1406740.89	40.4458540	-104.5302094	2.04	
10605.00	91.220	357.940	6768.26	3695.86	3550.75	-1310.51	3269904.38	1406835.78	40.4461146	-104.5302210	1.77	
10794.00	90.520	358.140	6765.39	3883.85	3739.62	-1316.97	3269897.92	1407024.64	40.4466332	-104.5302368	0.39	
10888.00	90.300	358.330	6764.72	3977.32	3833.57	-1319.87	3269895.03	1407118.59	40.4468911	-104.5302435	0.31	
10983.00	90.300	358.350	6764.22	4071.78	3928.53	-1322.62	3269892.27	1407213.54	40.4471518	-104.5302497	0.02	
11078.00	90.820	358.790	6763.29	4166.18	4023.49	-1324.99	3269889.90	1407308.50	40.4474126	-104.5302545	0.72	
11172.00	90.790	359.310	6761.97	4259.50	4117.47	-1326.55	3269888.34	1407402.48	40.4476706	-104.5302564	0.55	
11267.00	90.390	359.260	6760.99	4353.77	4212.46	-1327.73	3269887.16	1407497.46	40.4479313	-104.5302569	0.42	
11361.00	90.020	358.740	6760.66	4447.11	4306.44	-1329.37	3269885.52	1407591.44	40.4481893	-104.5302591	0.68	
11456.00	89.470	357.850	6761.08	4541.57	4401.40	-1332.20	3269882.69	1407686.39	40.4484500	-104.5302655	1.10	

REFERENCE WELLPATH IDENTIFICATION

Operator	NOBLE ENERGY, INC	Well	Reveille A34-725
Field	WELD COUNTY (NOBLE NAD 83 GRID)	API/Legal	
Facility	SEC.35-T06N-R64W	Wellbore	Reveille A34-725 AWB
Slot	SLOT#17 Reveille A34-725 (260'FSL & 315'FWL,SEC.35)		

WELLPATH DATA (180 stations)

MD [ft]	Inclination [°]	Azimuth [°]	TVD [ft]	Vert Sect [ft]	North [ft]	East [ft]	Grid East [US ft]	Grid North [US ft]	Latitude	Longitude	DLS [°/100ft]	Comments
11550.00	90.210	358.570	6761.34	4635.05	4495.35	-1335.14	3269879.76	1407780.34	40.4487080	-104.5302724	1.10	
11645.00	89.320	358.240	6761.73	4729.49	4590.31	-1337.78	3269877.11	1407875.30	40.4489687	-104.5302782	1.00	
11739.00	89.590	358.270	6762.62	4822.96	4684.26	-1340.64	3269874.25	1407969.25	40.4492267	-104.5302847	0.29	
11834.00	89.900	359.180	6763.05	4917.34	4779.24	-1342.76	3269872.14	1408064.22	40.4494874	-104.5302886	1.01	
11929.00	90.180	359.040	6762.98	5011.65	4874.23	-1344.23	3269870.66	1408159.20	40.4497482	-104.5302902	0.33	
12023.00	89.870	359.060	6762.94	5104.97	4968.21	-1345.79	3269869.10	1408253.19	40.4500062	-104.5302921	0.33	
12118.00	89.350	358.780	6763.59	5199.32	5063.19	-1347.58	3269867.31	1408348.16	40.4502669	-104.5302948	0.62	
12212.00	89.990	359.650	6764.13	5292.61	5157.18	-1348.87	3269866.02	1408442.15	40.4505249	-104.5302957	1.15	
12307.00	89.900	359.930	6764.22	5386.78	5252.18	-1349.22	3269865.68	1408537.14	40.4507857	-104.5302932	0.31	
12401.00	89.960	359.550	6764.33	5479.96	5346.18	-1349.64	3269865.25	1408631.14	40.4510437	-104.5302911	0.41	
12496.00	90.020	0.620	6764.35	5574.06	5441.18	-1349.50	3269865.39	1408726.13	40.4513044	-104.5302868	1.13	
12685.00	90.550	359.400	6763.41	5761.30	5630.17	-1349.47	3269865.42	1408915.12	40.4518232	-104.5302793	0.70	
12780.00	89.870	359.700	6763.06	5855.51	5725.17	-1350.22	3269864.68	1409010.11	40.4520839	-104.5302782	0.78	
12874.00	90.300	359.870	6762.92	5948.69	5819.17	-1350.57	3269864.32	1409104.10	40.4523419	-104.5302758	0.49	
12969.00	90.050	359.020	6762.63	6042.93	5914.16	-1351.49	3269863.40	1409199.10	40.4526027	-104.5302754	0.93	
13063.00	90.270	0.170	6762.37	6136.14	6008.16	-1352.15	3269862.74	1409293.09	40.4528607	-104.5302741	1.25	
13158.00	89.350	358.910	6762.68	6230.36	6103.15	-1352.92	3269861.98	1409388.08	40.4531215	-104.5302731	1.64	
13252.00	90.490	359.710	6762.82	6323.63	6197.14	-1354.05	3269860.85	1409482.06	40.4533795	-104.5302735	1.48	
13347.00	89.590	358.920	6762.75	6417.90	6292.13	-1355.18	3269859.71	1409577.05	40.4536402	-104.5302738	1.26	
13442.00	89.440	358.540	6763.55	6512.28	6387.11	-1357.29	3269857.60	1409672.02	40.4539010	-104.5302776	0.43	
13536.00	89.130	359.370	6764.73	6605.61	6481.08	-1359.00	3269855.89	1409765.99	40.4541590	-104.5302801	0.94	
13631.00	89.990	359.430	6765.46	6699.86	6576.07	-1360.00	3269854.90	1409860.98	40.4544197	-104.5302800	0.91	
13726.00	90.360	359.470	6765.17	6794.10	6671.07	-1360.91	3269853.98	1409955.97	40.4546805	-104.5302795	0.39	
13820.00	89.650	359.610	6765.16	6887.33	6765.06	-1361.67	3269853.23	1410049.96	40.4549385	-104.5302785	0.77	
13915.00	91.190	0.360	6764.46	6981.44	6860.06	-1361.69	3269853.20	1410144.95	40.4551992	-104.5302749	1.80	
14010.00	89.190	0.380	6764.15	7075.47	6955.05	-1361.08	3269853.82	1410239.94	40.4554599	-104.5302689	2.11	
14104.00	90.580	0.010	6764.34	7168.55	7049.05	-1360.76	3269854.14	1410333.94	40.4557179	-104.5302641	1.53	
14199.00	90.520	0.250	6763.42	7262.64	7144.04	-1360.54	3269854.35	1410428.93	40.4559786	-104.5302596	0.26	
14294.00	90.180	0.770	6762.84	7356.64	7239.04	-1359.70	3269855.20	1410523.92	40.4562393	-104.5302528	0.65	
14388.00	91.130	359.910	6761.77	7449.68	7333.03	-1359.14	3269855.76	1410617.90	40.4564973	-104.5302471	1.36	

REFERENCE WELLPATH IDENTIFICATION

Operator	NOBLE ENERGY, INC	Well	Reveille A34-725
Field	WELD COUNTY (NOBLE NAD 83 GRID)	API/Legal	
Facility	SEC.35-T06N-R64W	Wellbore	Reveille A34-725 AWB
Slot	SLOT#17 Reveille A34-725 (260'FSL & 315'FWL,SEC.35)		

WELLPATH DATA (180 stations) † = interpolated, ‡ = extrapolated station

MD [ft]	Inclination [°]	Azimuth [°]	TVD [ft]	Vert Sect [ft]	North [ft]	East [ft]	Grid East [US ft]	Grid North [US ft]	Latitude	Longitude	DLS [°/100ft]	Comments
14483.00	90.790	0.940	6760.18	7543.69	7428.01	-1358.43	3269856.46	1410712.88	40.4567580	-104.5302409	1.14	
14578.00	89.690	0.820	6759.78	7637.60	7523.00	-1356.97	3269857.92	1410807.87	40.4570186	-104.5302319	1.16	
14672.00	89.070	0.520	6760.80	7730.56	7616.98	-1355.87	3269859.02	1410901.85	40.4572766	-104.5302242	0.73	
14767.00	89.870	0.730	6761.67	7824.53	7711.97	-1354.84	3269860.06	1410996.84	40.4575373	-104.5302168	0.87	
14862.00	90.550	359.560	6761.33	7918.61	7806.97	-1354.60	3269860.30	1411091.83	40.4577980	-104.5302122	1.42	
14956.00	90.850	359.080	6760.18	8011.88	7900.96	-1355.71	3269859.18	1411185.81	40.4580560	-104.5302125	0.60	
15051.00	91.320	1.330	6758.38	8105.93	7995.93	-1355.37	3269859.52	1411280.78	40.4583167	-104.5302075	2.42	
15146.00	89.750	0.340	6757.49	8199.84	8090.91	-1353.99	3269860.90	1411375.76	40.4585773	-104.5301988	1.95	
15241.00	89.650	359.770	6757.99	8293.95	8185.91	-1353.90	3269861.00	1411470.76	40.4588381	-104.5301948	0.61	
15335.00	90.670	359.160	6757.73	8387.19	8279.91	-1354.78	3269860.12	1411564.75	40.4590961	-104.5301942	1.26	
15429.00	89.290	358.970	6757.76	8480.51	8373.89	-1356.31	3269858.58	1411658.73	40.4593541	-104.5301961	1.48	
15524.00	89.590	359.470	6758.69	8574.79	8468.88	-1357.60	3269857.29	1411753.71	40.4596148	-104.5301970	0.61	
15619.00	90.120	359.650	6758.93	8669.01	8563.87	-1358.33	3269856.56	1411848.70	40.4598756	-104.5301959	0.59	
15713.00	89.990	359.960	6758.84	8762.18	8657.87	-1358.65	3269856.24	1411942.70	40.4601336	-104.5301933	0.36	
15808.00	89.690	359.130	6759.10	8856.40	8752.87	-1359.41	3269855.49	1412037.69	40.4603944	-104.5301923	0.93	
15903.00	89.500	359.630	6759.78	8950.65	8847.86	-1360.44	3269854.46	1412132.68	40.4606551	-104.5301922	0.56	
15997.00	89.410	359.900	6760.67	9043.82	8941.86	-1360.82	3269854.07	1412226.67	40.4609131	-104.5301899	0.30	
16092.00	89.870	0.170	6761.27	9137.93	9036.85	-1360.76	3269854.13	1412321.66	40.4611738	-104.5301860	0.56	
16187.00	89.870	0.280	6761.48	9232.00	9131.85	-1360.39	3269854.50	1412416.66	40.4614346	-104.5301809	0.12	
16281.00	89.220	359.470	6762.23	9325.15	9225.85	-1360.59	3269854.30	1412510.65	40.4616926	-104.5301780	1.10	
16376.00	89.530	359.330	6763.26	9419.40	9320.84	-1361.59	3269853.30	1412605.63	40.4619533	-104.5301778	0.36	
16470.00	88.670	359.370	6764.74	9512.65	9414.82	-1362.66	3269852.24	1412699.61	40.4622113	-104.5301779	0.92	
16565.00	90.760	0.210	6765.21	9606.81	9509.81	-1363.00	3269851.89	1412794.60	40.4624720	-104.5301755	2.37	
16660.00	90.610	0.090	6764.08	9700.89	9604.80	-1362.76	3269852.14	1412889.59	40.4627328	-104.5301708	0.20	
16754.00	90.790	359.820	6762.93	9794.02	9698.80	-1362.83	3269852.07	1412983.58	40.4629907	-104.5301674	0.35	
16849.00	90.980	1.220	6761.46	9888.01	9793.78	-1361.97	3269852.93	1413078.56	40.4632514	-104.5301606	1.49	
16943.00	90.390	0.070	6760.34	9980.98	9887.76	-1360.91	3269853.99	1413172.54	40.4635093	-104.5301531	1.37	
17038.00	89.900	0.060	6760.10	10075.08	9982.76	-1360.80	3269854.09	1413267.53	40.4637701	-104.5301490	0.52	
17096.00	90.300	0.990	6760.00	10132.47	10040.76	-1360.27	3269854.62	1413325.53	40.4639293	-104.5301448	1.75	LAST BH MWD SURVEY
17121.00†	90.300	0.990	6759.87	10157.17	10065.76	-1359.84	3269855.06	1413350.52	40.4639978	-104.5301422	0.00	PROJECTION TO BIT

HOLE & CASING SECTIONS - Ref Wellbore: Reveille A34-725 AWB Ref Wellpath: Reveille A34-725 AWP

String/Diameter	Start MD [ft]	End MD [ft]	Interval [ft]	Start TVD [ft]	End TVD [ft]	Start N/S [ft]	Start E/W [ft]	End N/S [ft]	End E/W [ft]
9.625in Casing Surface	30.00	1934.80	1904.80	30.00	1934.68	-0.01	0.02	-10.71	-5.43

TARGETS

Name	TVD [ft]	North [ft]	East [ft]	Grid East [US ft]	Grid North [US ft]	Latitude	Longitude	Shape
SEC.26-T06N-R64W	19.00	247.08	-4091.35	3267123.65	1403532.24	40.4371300	-104.5403400	polygon
2D Polygon: dimensions not calculated								
SEC.27-T06N-R64W	19.00	247.08	-4091.35	3267123.65	1403532.24	40.4371300	-104.5403400	polygon
2D Polygon: dimensions not calculated								
SEC.34-T06N-R64W	19.00	247.08	-4091.35	3267123.65	1403532.24	40.4371300	-104.5403400	polygon
2D Polygon: dimensions not calculated								
SEC.35-T06N-R64W	19.00	247.08	-4091.35	3267123.65	1403532.24	40.4371300	-104.5403400	polygon
2D Polygon: dimensions not calculated								
Reveille A34-725 TPZ REV-1 (460'FSL & 968'FEL,SEC.34)	6750.00	177.32	-1283.88	3269931.01	1403462.48	40.4368547	-104.5302579	point
Reveille A34-725 BHL REV-1 (200'FNL & 958'FEL,SEC.27)	6760.00	10066.67	-1380.25	3269834.65	1413351.44	40.4640010	-104.5302155	point

REFERENCE WELLPATH IDENTIFICATION

Operator	NOBLE ENERGY, INC	Well	Reveille A34-725
Field	WELD COUNTY (NOBLE NAD 83 GRID)	API/Legal	
Facility	SEC.35-T06N-R64W	Wellbore	Reveille A34-725 AWB
Slot	SLOT#17 Reveille A34-725 (260'FSL & 315'FWL,SEC.35)		

WELLPATH COMPOSITION - Ref Wellbore: Reveille A34-725 AWB Ref Wellpath: Reveille A34-725 AWP

Start MD [ft]	End MD [ft]	Positional Uncertainty Model	Log Name/Comment	Wellbore	Survey Date
0.00	1926.00	Gyrodatta 2015 - GC+DROP+COND	Gyrodatta 2015 - GC+DROP+COND 13-1/2" <82 - 1926>	Reveille A34-725 AWB	1/4/2021
1926.00	17121.00	OWSG MWD rev2 (MS+IFR1) NOBLE	OWSG MWD rev2 (MS+IFR1) NOBLE 8-1/2" <1996 - 17096>	Reveille A34-725 AWB	1/7/2021

REFERENCE WELLPATH IDENTIFICATION

Operator	NOBLE ENERGY, INC	Well	Reveille A34-725
Field	WELD COUNTY (NOBLE NAD 83 GRID)	API/Legal	
Facility	SEC.35-T06N-R64W	Wellbore	Reveille A34-725 AWB
Slot	SLOT#17 Reveille A34-725 (260'FSL & 315'FWL,SEC.35)		

WELLPATH COMMENTS

MD [ft]	Inclination [°]	Azimuth [°]	TVD [ft]	Comment
82.00	0.190	109.550	82.00	FIRST GYRODATA SURVEY
1926.00	2.010	194.660	1925.89	LAST GYRODATA SURVEY
1996.00	1.120	181.680	1995.86	FIRST BH MWD SURVEY
17096.00	90.300	0.990	6760.00	LAST BH MWD SURVEY
17121.00	90.300	0.990	6759.87	PROJECTION TO BIT