



Gamma Ray

LWD MEMORY LOG

Scale: Company: Noble Energy

1:240 Well: Reveille A34-735

True Vertical Depth Field: Wattenberg

Depth Reference: County: Weld Country: United States
Driller's Depth State: Colorado

Status: Final Print Surface Location: 40° 26' 10.788" N
Latitude: 104° 31' 32.628" W
Longitude: Directional

API No: 05-123-50795-00 SEC: 35 TWN: 6N RGE: 64W

Job ID: 110697717
Permanent Datum (P.D.): Mean Sea Level Elevation: 0.00 ft Elev. KB: N/A
Log Measured From: Rig Floor Above P.D.: 4681.00 ft Elev. DF: 4681.00 ft
Elev. GL: 4651.00 ft

Dates		Interval		Magnetic Field Reference	
From: 2021-01-02	Drilled (ft)	Logged (ft)	Azi Reference North: Grid Dip Angle: (deg)		66.83
To: 2021-01-04	Top: 1944.00	Top: 1944.00	Total Magnetic Field Strength: (nT)		51974
Spud: 2021-01-02	Bottom: 17418.00	Bottom: 17405.00	Mag to Reference North Correction: (deg)		7.11

Borehole Record			Casing Record			
Hole Size (in)	From (ft)	To (ft)	Size (in)	Weight (lb/ft)	From (ft)	To (ft)
13.500	30.00	1944.00	9.625	36.00	30.00	1934.00
8.500	1944.00	17418.00				

Mud Record			Deviation Record			
Type	From (ft)	To (ft)	Hole Size (in)	Interval (ft)	Inc Az (Start)	Inc Az (End)
Oil Based Mud	1944.00	17418.00	8.500	15474.00	1.44 181.31	89.82 359.08

Acquisition System		Software Version		Other	
Cadence	RT 5.7			Rig: H&P 517	
Plot Studio	5.7.8906.1			Contractor: Helmerich & Payne Drilling Co	
				District: RMA	Unit: D&E

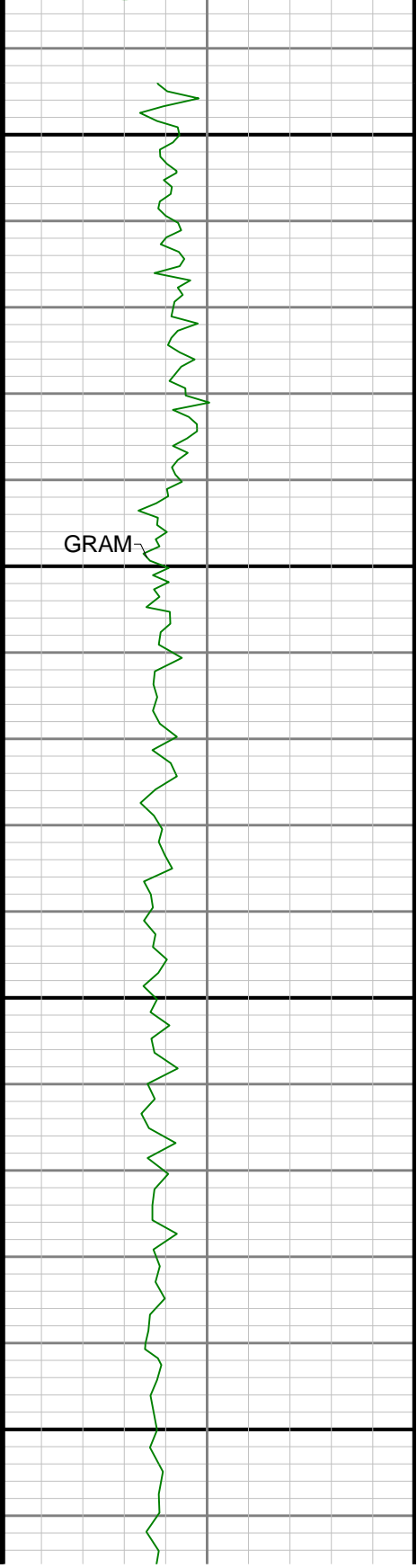
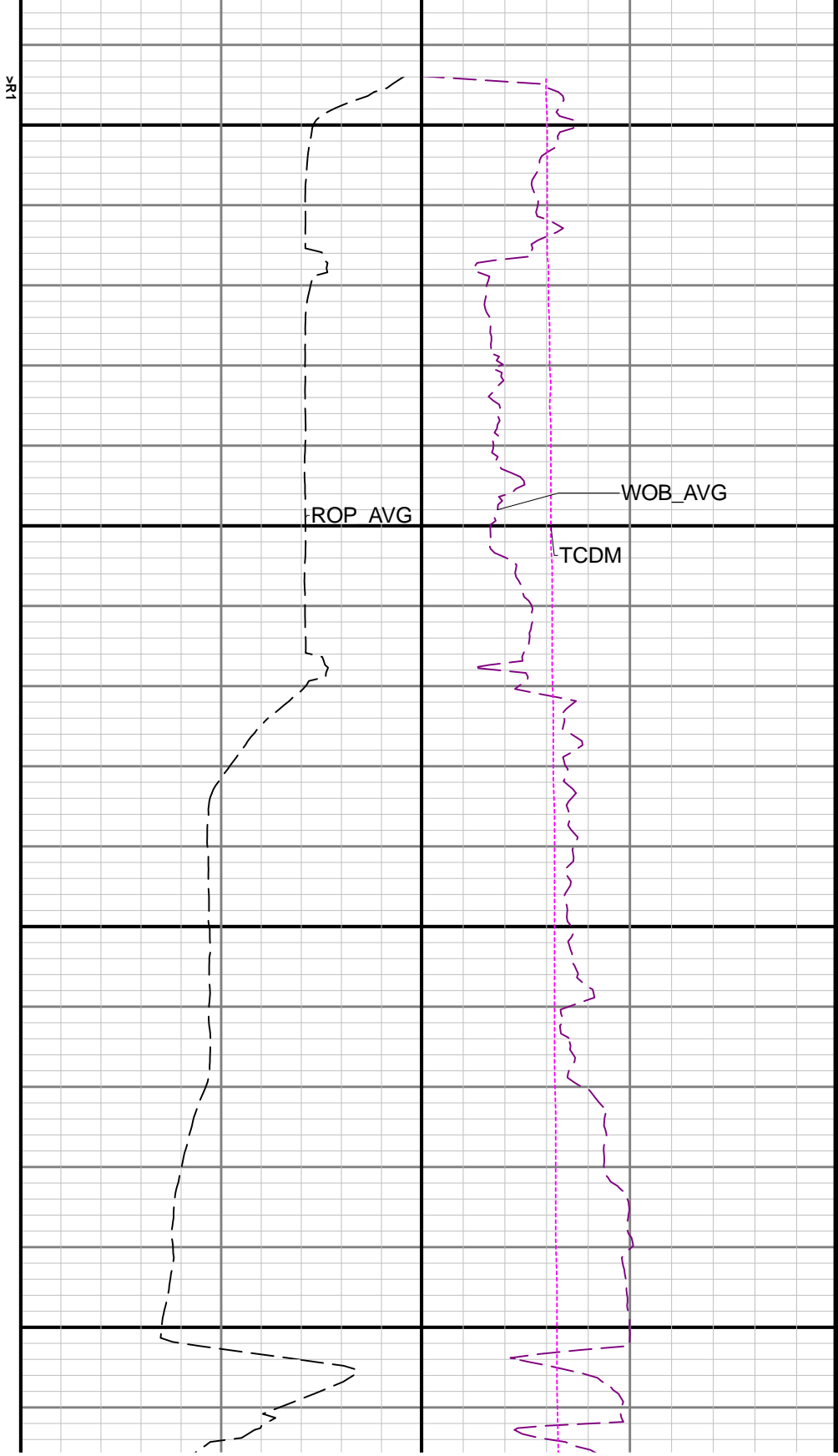
(C) 2020 Baker Hughes Company - All rights reserved. Baker Hughes and its affiliates provides this information on an "as is" basis for general information purposes and believes it to be accurate as of the date of publication. Baker Hughes does not make any representation as to the accuracy or completeness of the information and makes no warranties of any kind, specific, implied or oral, to the fullest extent permissible by law, including those of merchantability and fitness for a particular purpose or use. Baker Hughes hereby disclaims any and all liability for any direct, indirect, consequential or special damages, claims for lost profits, or third party claims arising from the use of the information, whether a claim is asserted in contract, tort, or otherwise. The Baker Hughes logo is a trademark of Baker Hughes Company.

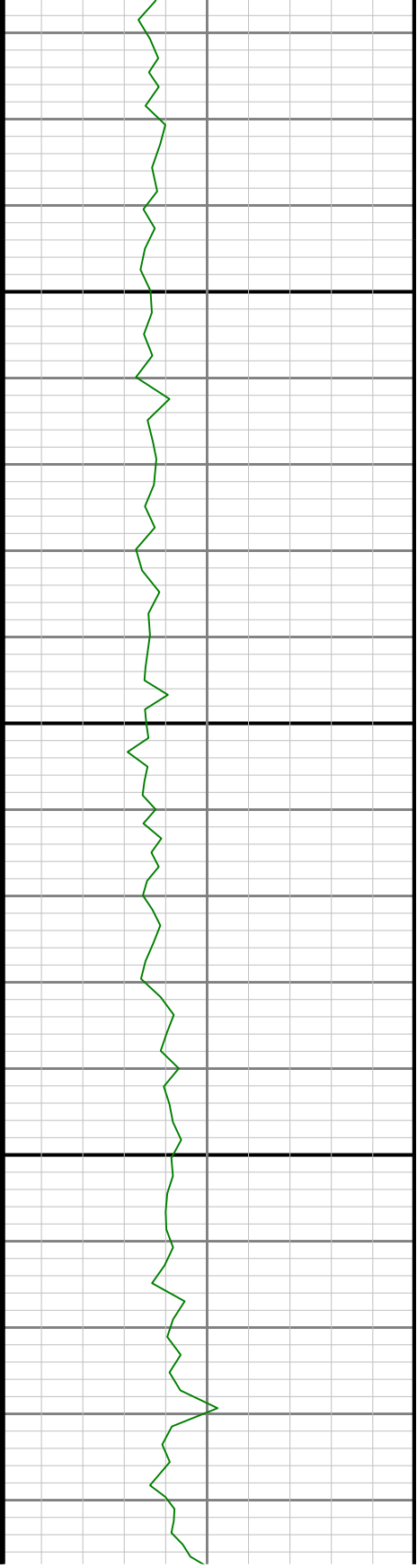
Log Run Summary

Run No	Bit Run No.	Bit Size (in)	Bit Type	Bit Gauge Length (in)	Assembly Type	Logged Interval		Bit Depth Interval		Date / Time		Circ. Hours (h)
						Top (ft)	Bottom (ft)	From (ft)	To (ft)	Start Logging	End Logging	
1	1	8.500	PDC	2.50	Rotary Steerable	1944.00	17405.00	1944.00	17418.00	2021-01-02 15:05	2021-01-04 12:40	41.95

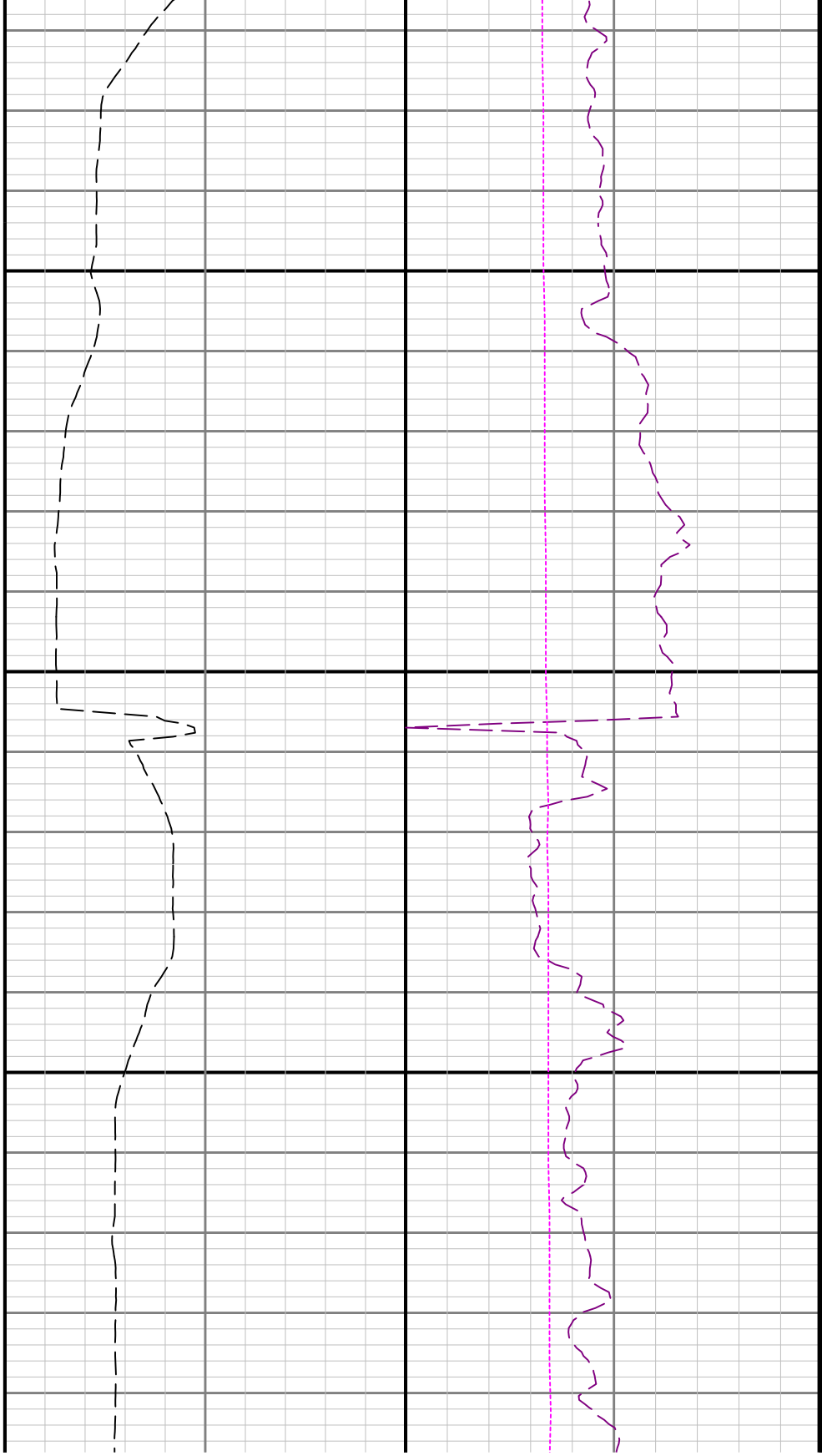
Crew

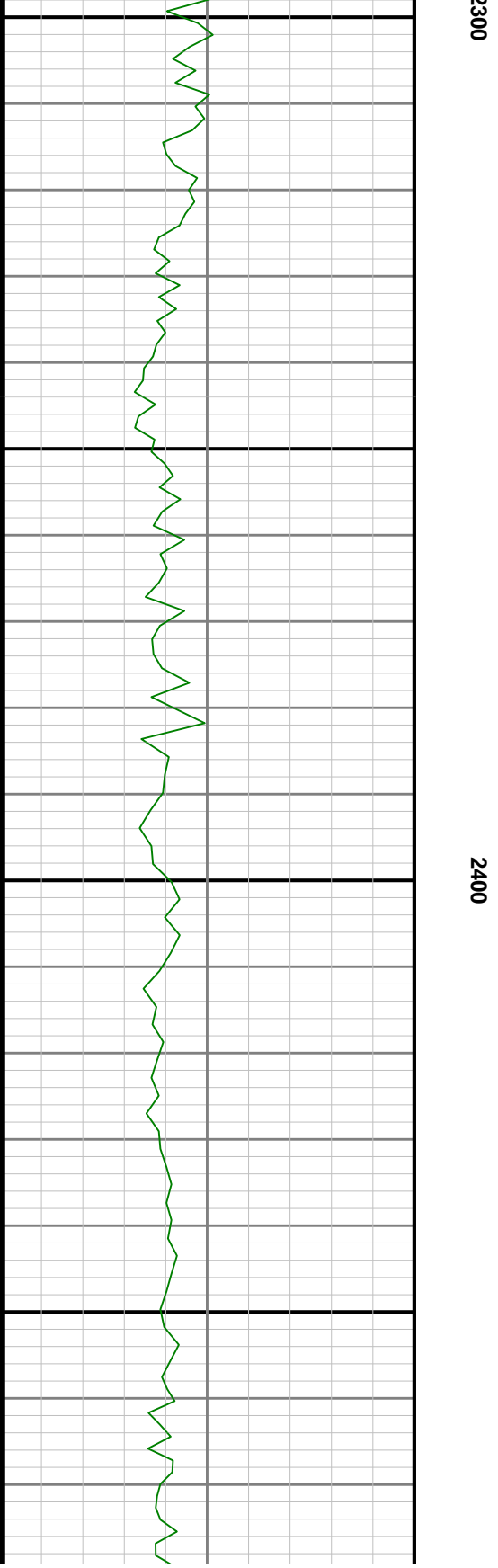
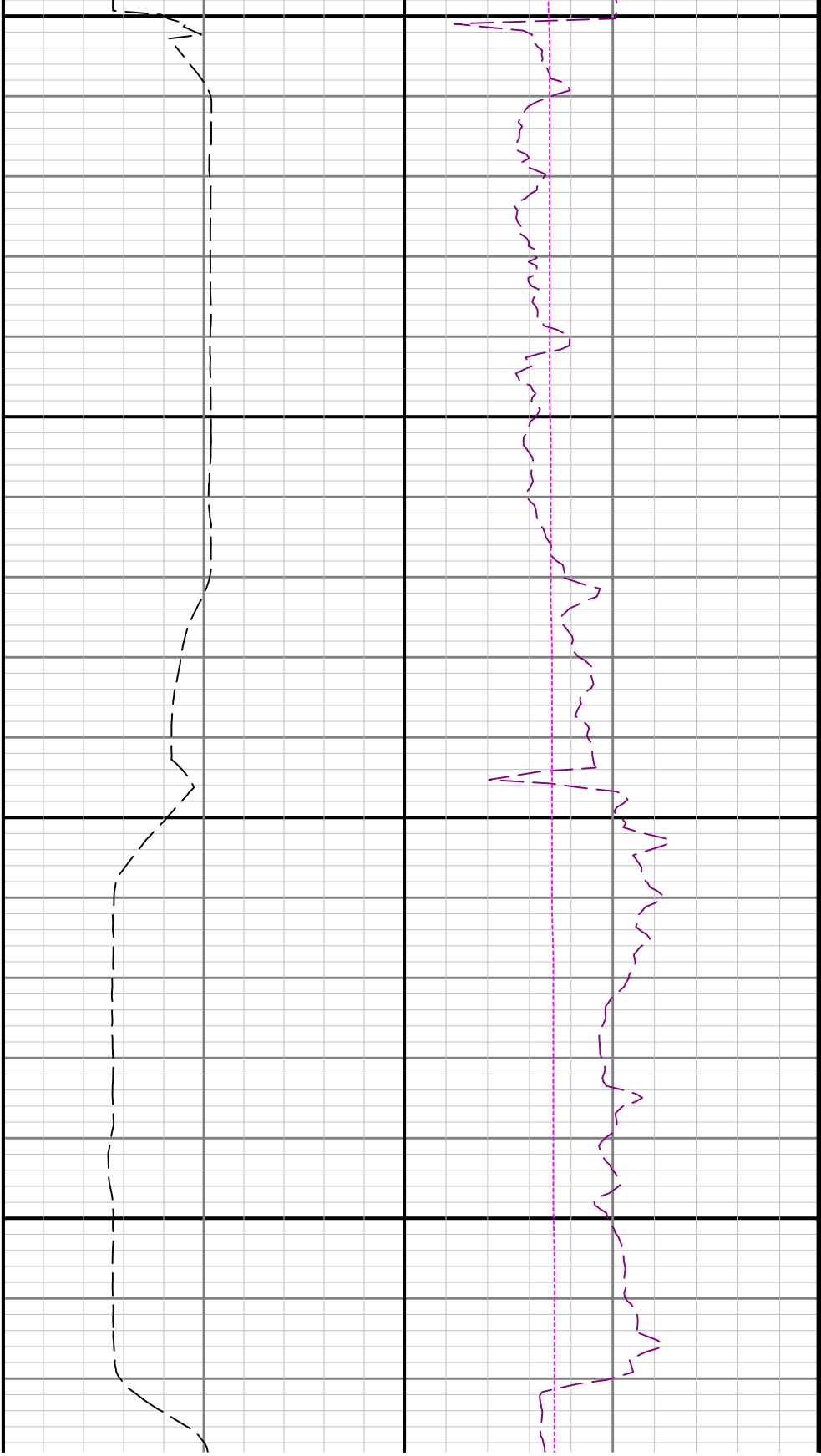
Name		Arrive	Depart	Name		Arrive	Depart	Name		Arrive	Depart
------	--	--------	--------	------	--	--------	--------	------	--	--------	--------





2200

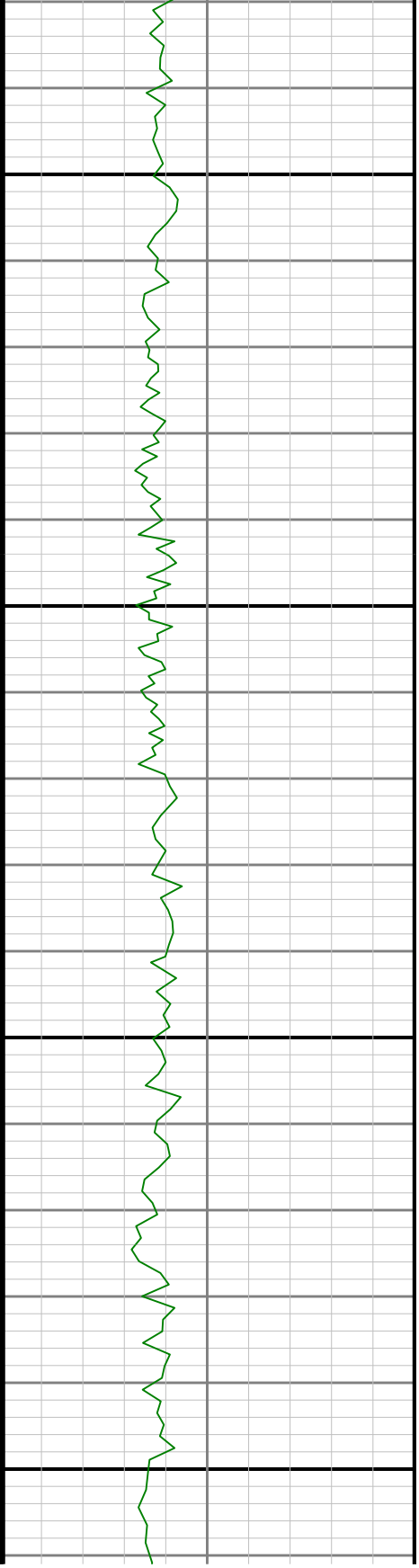


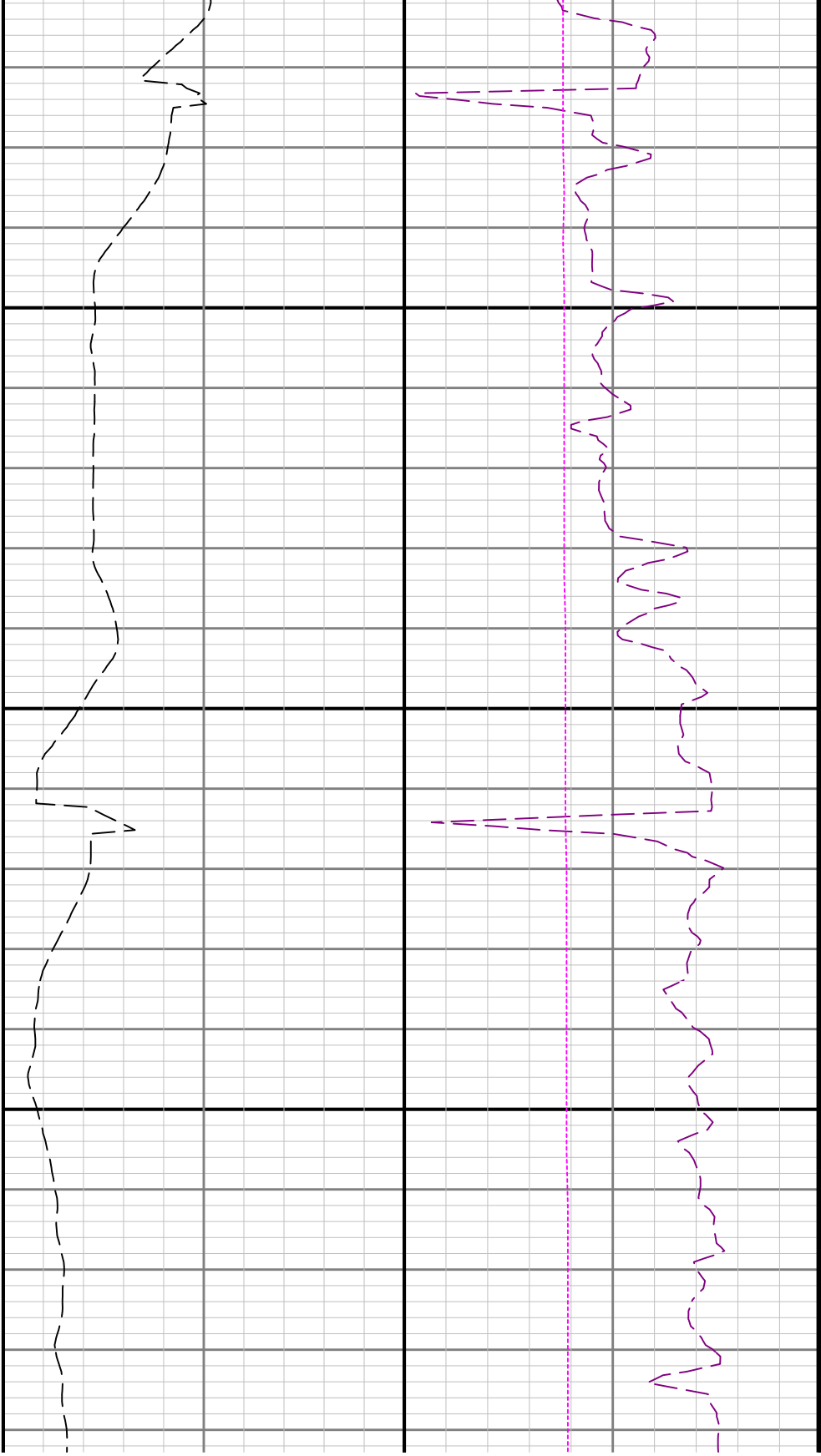




2500

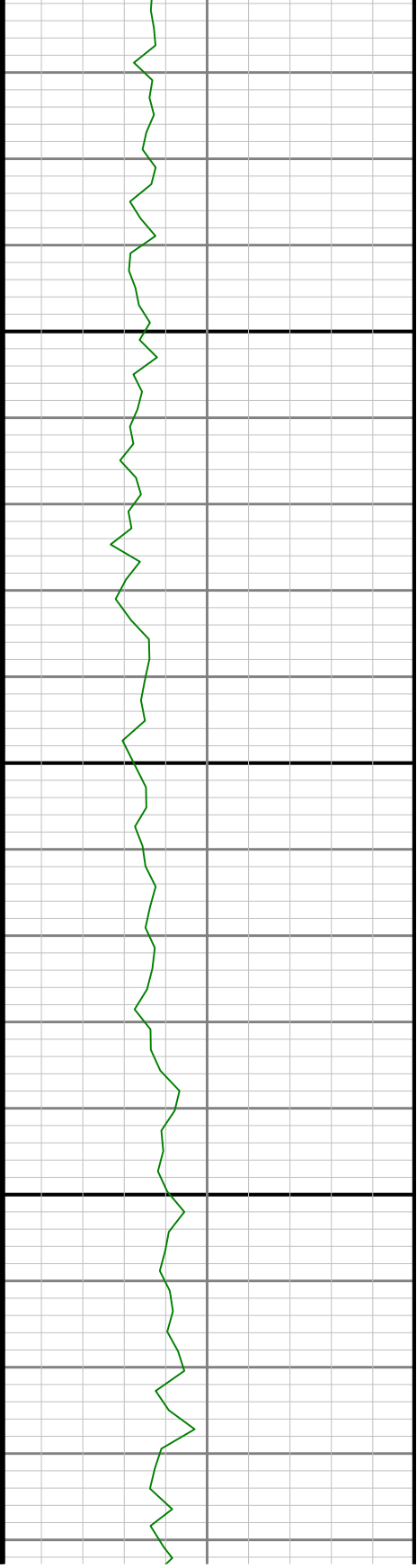
2600

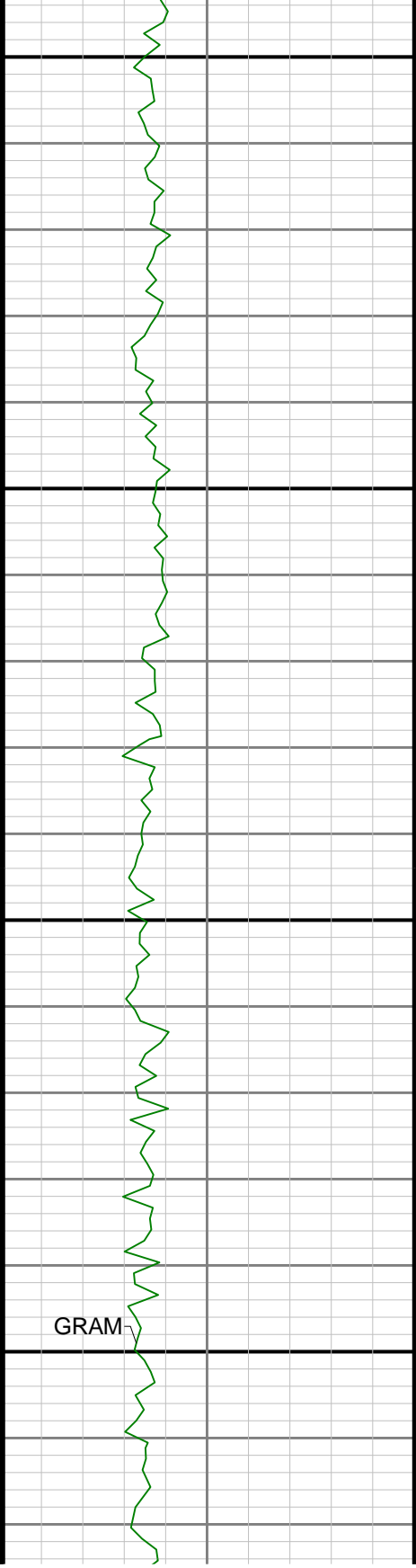




2700

2800

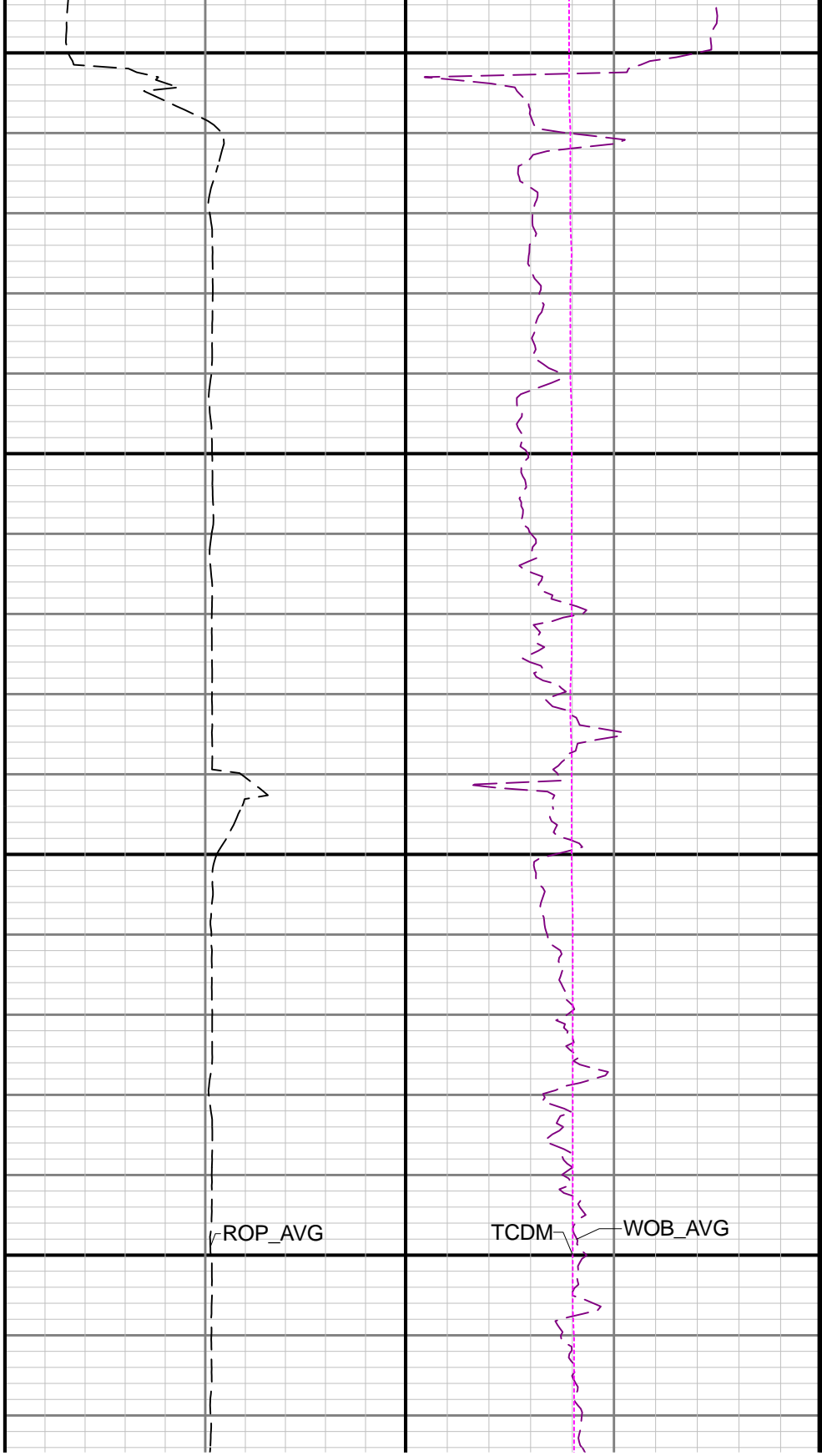




2900

3000

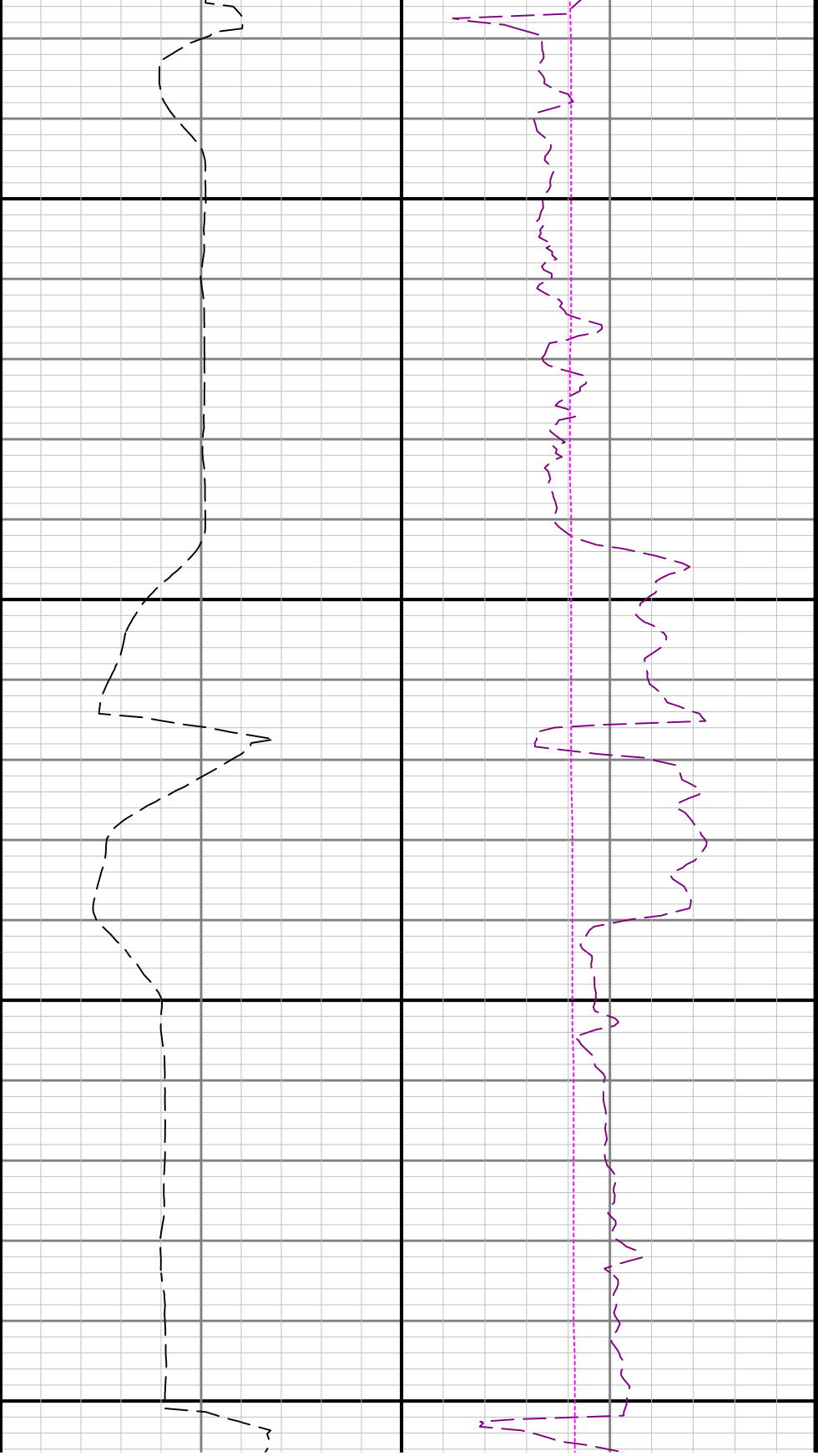
GRAM



ROP_AVG

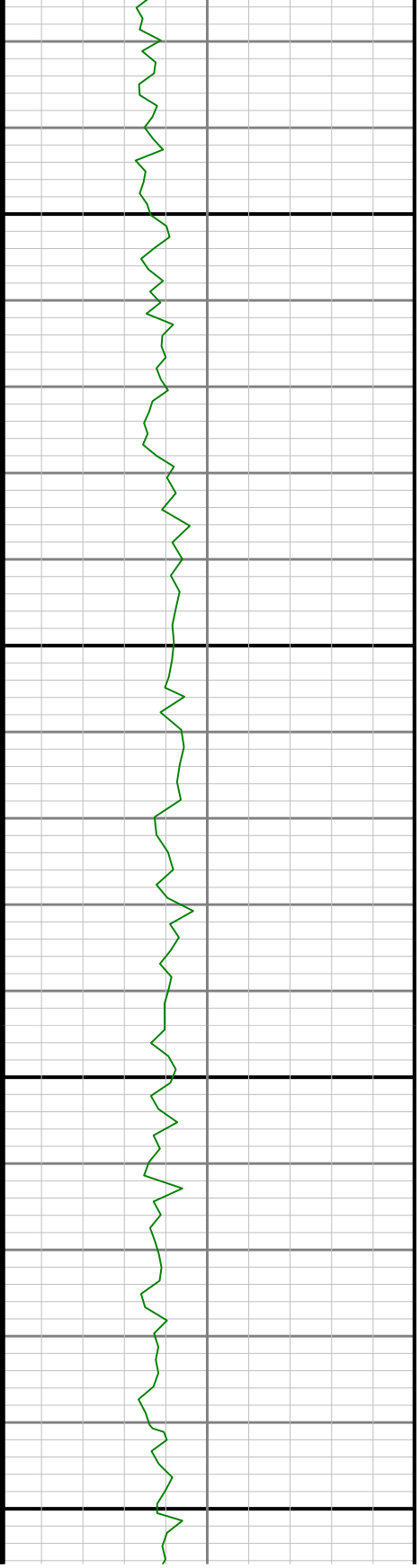
TCDM

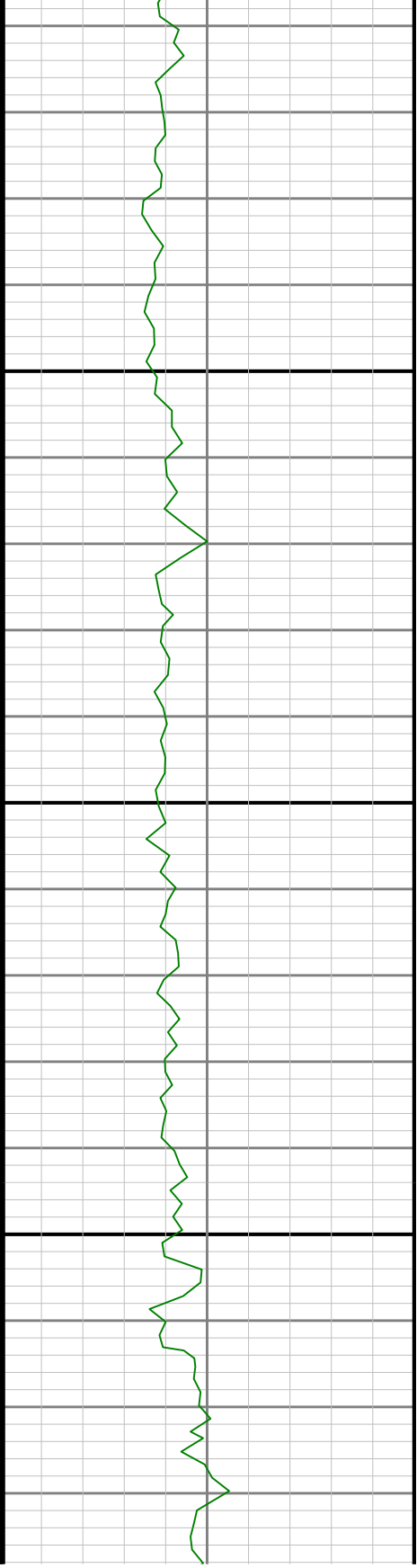
WOB_AVG



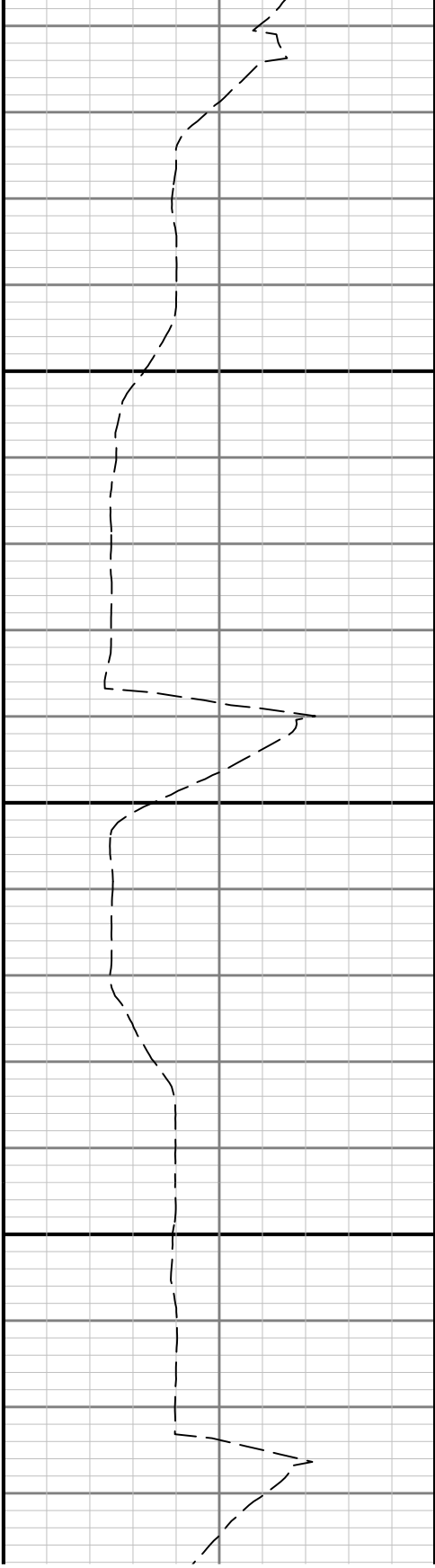
3100

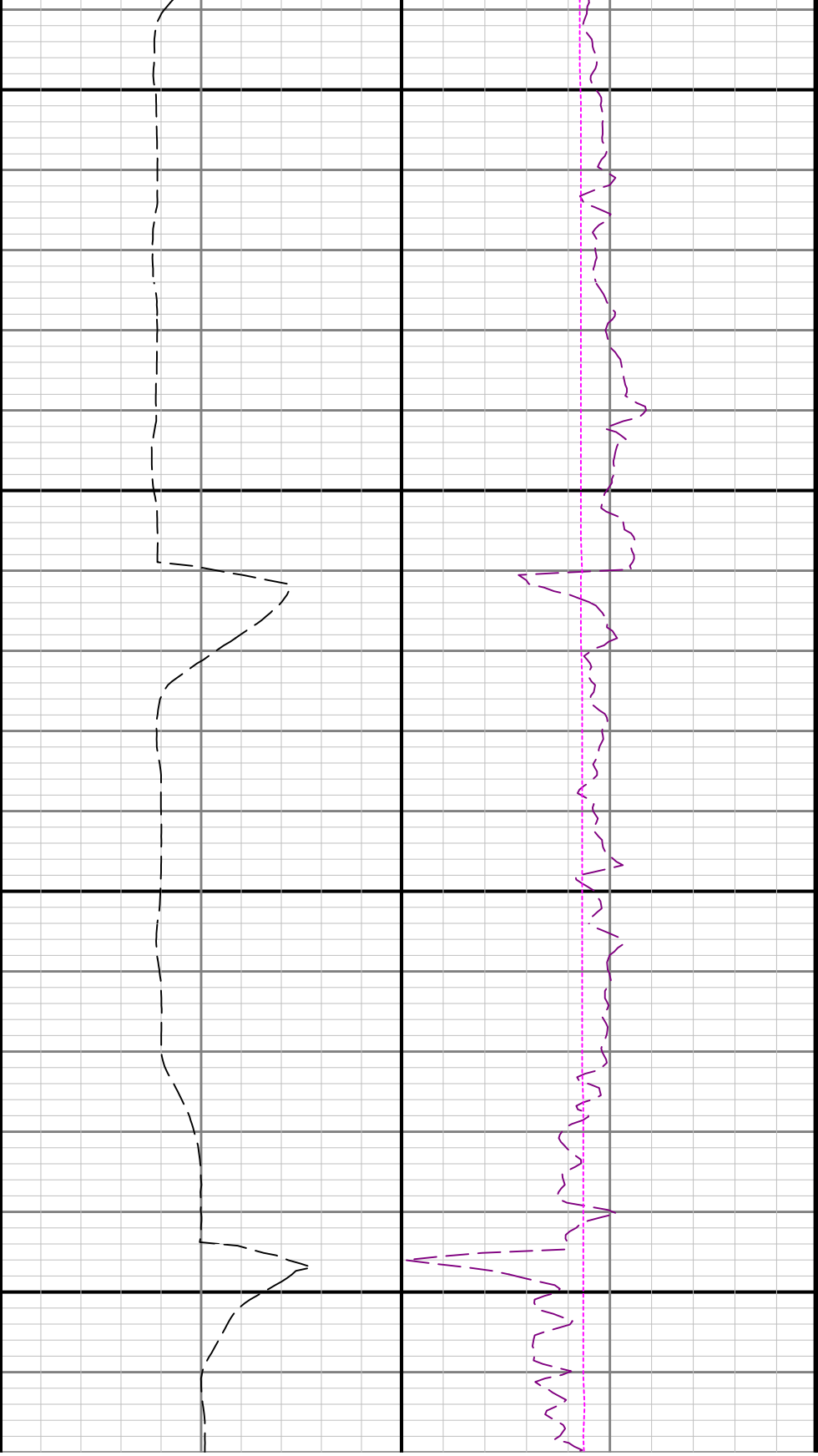
3200





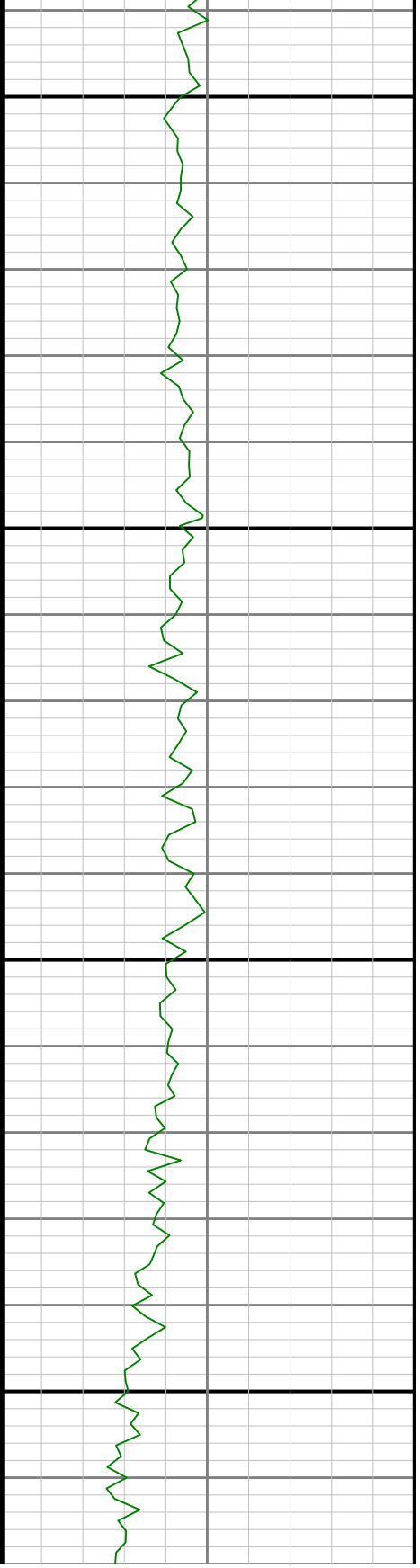
3300

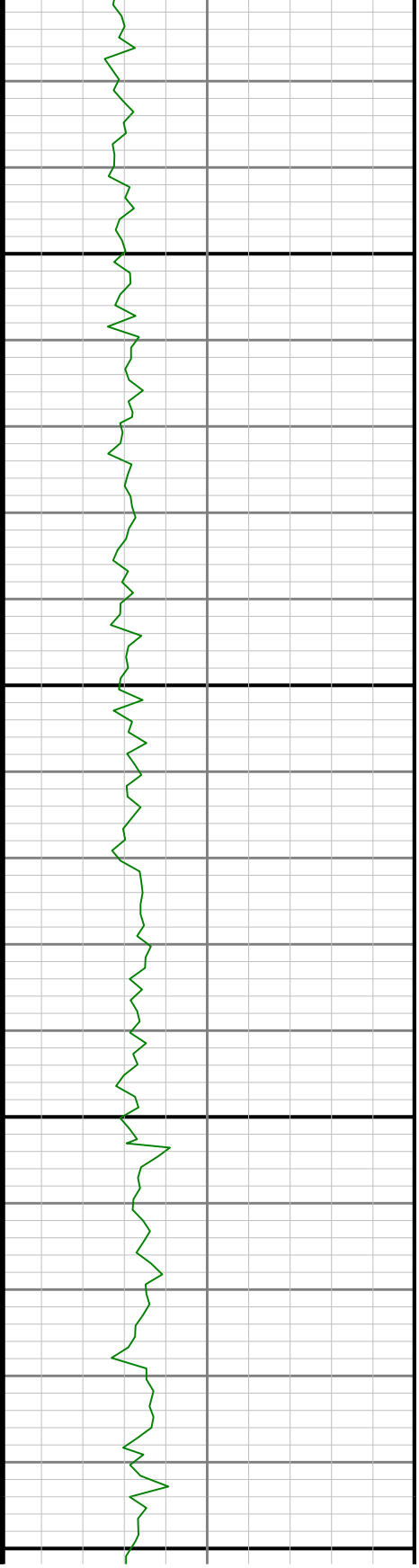
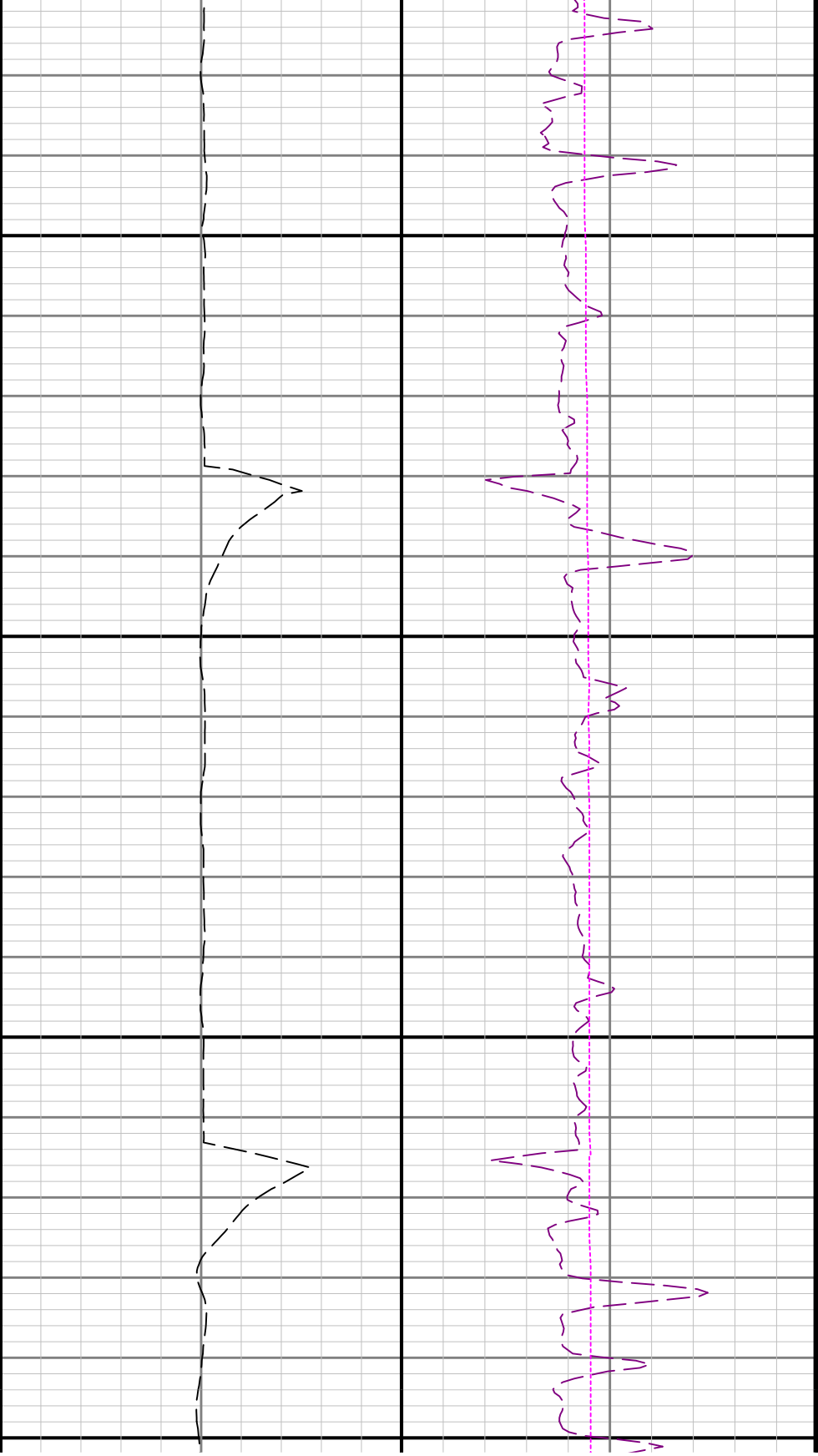


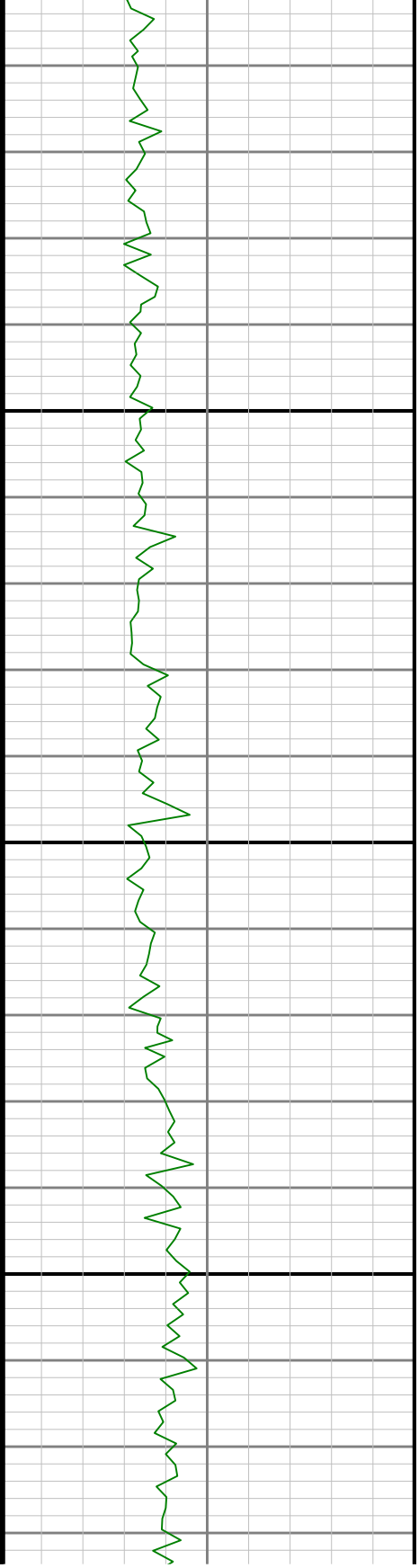
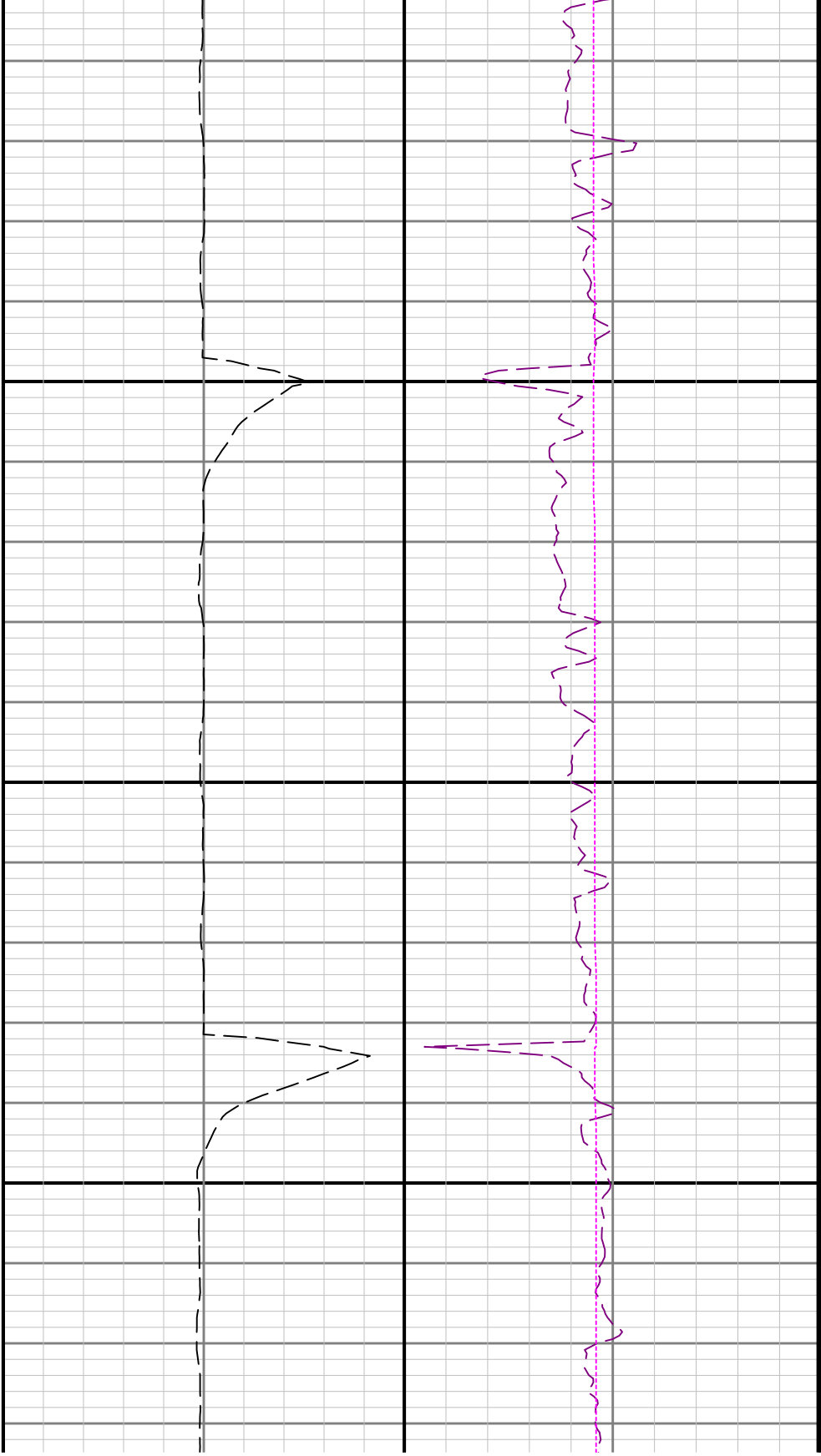


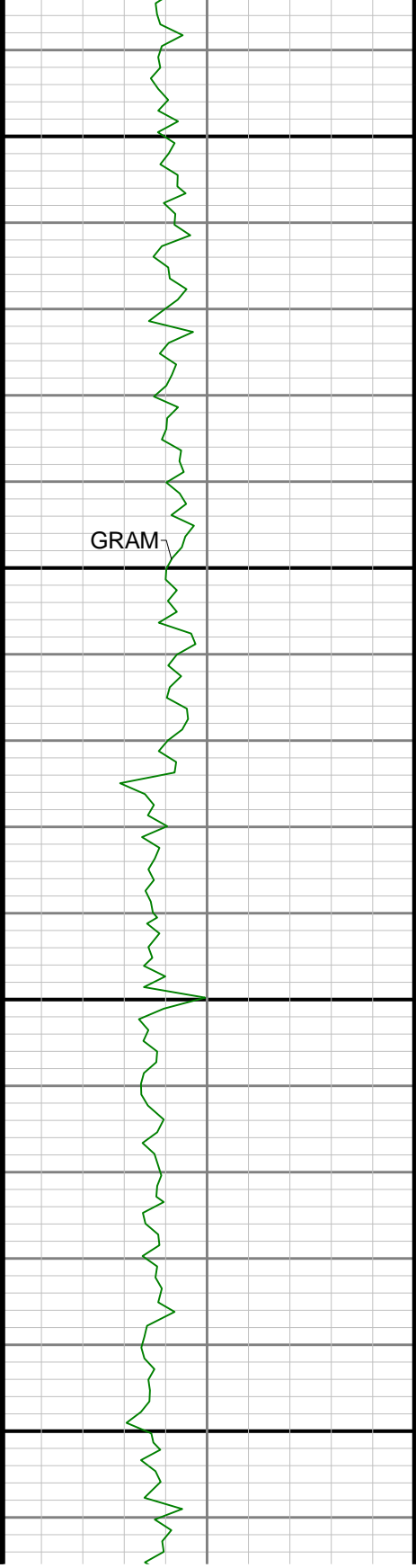
3400

3500



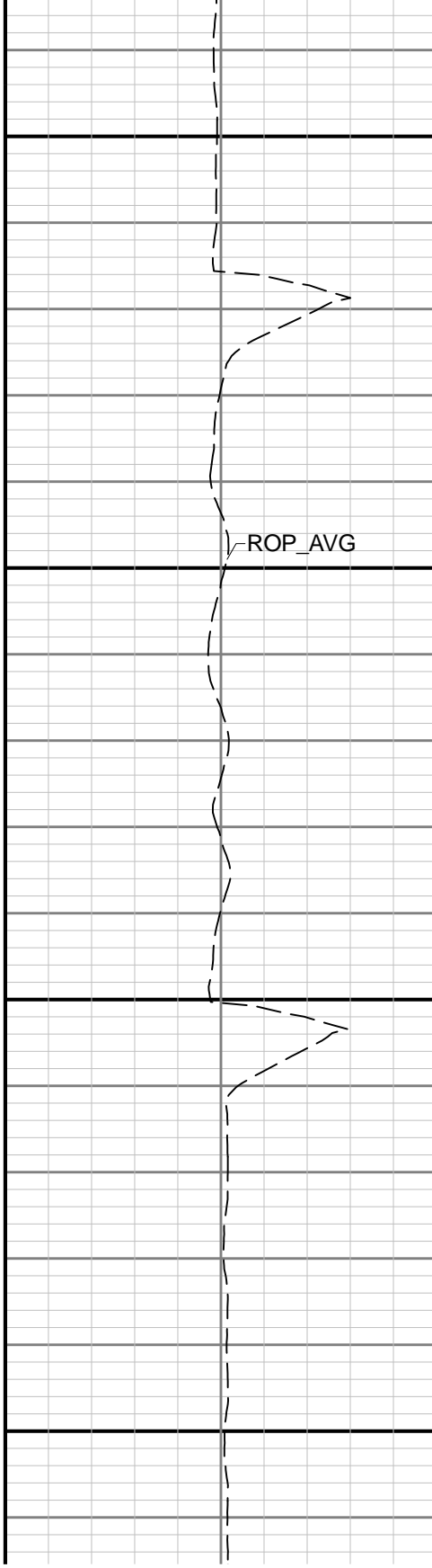




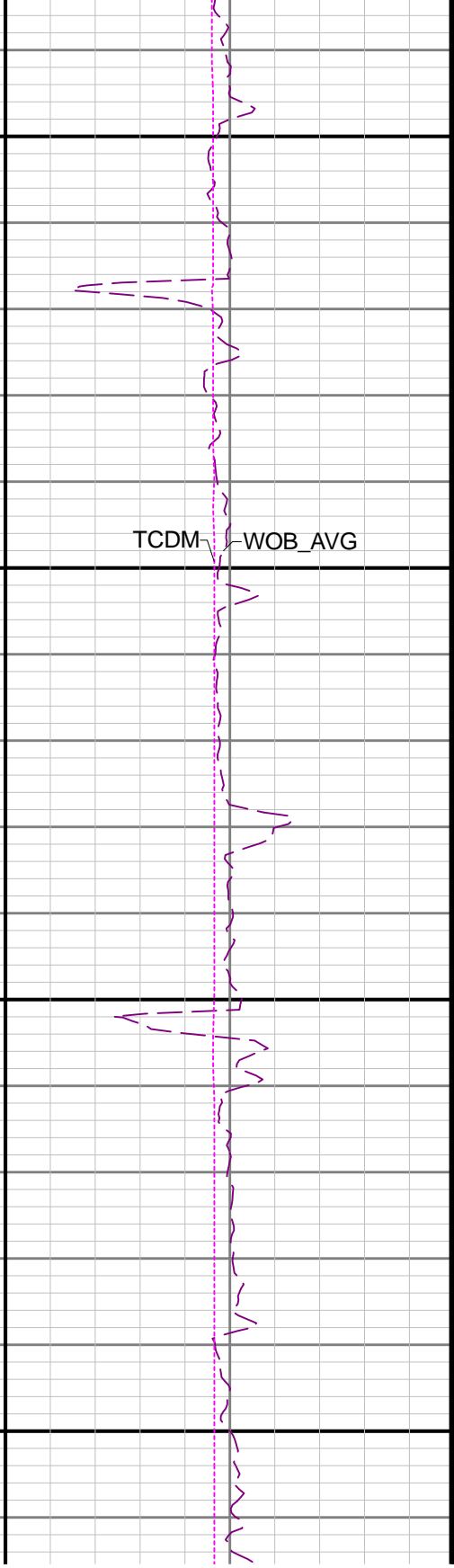


4000

4100

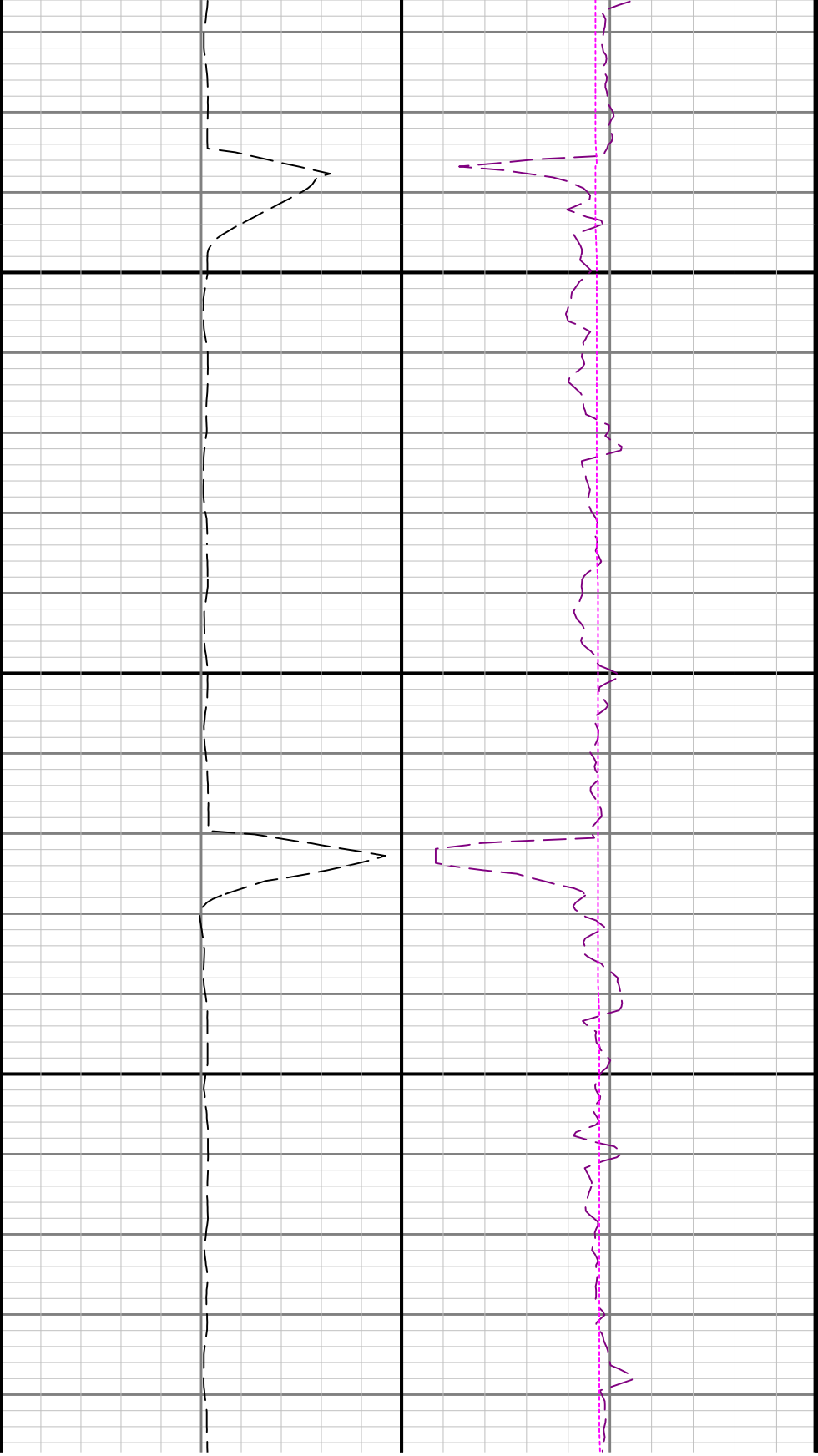


ROP_AVG

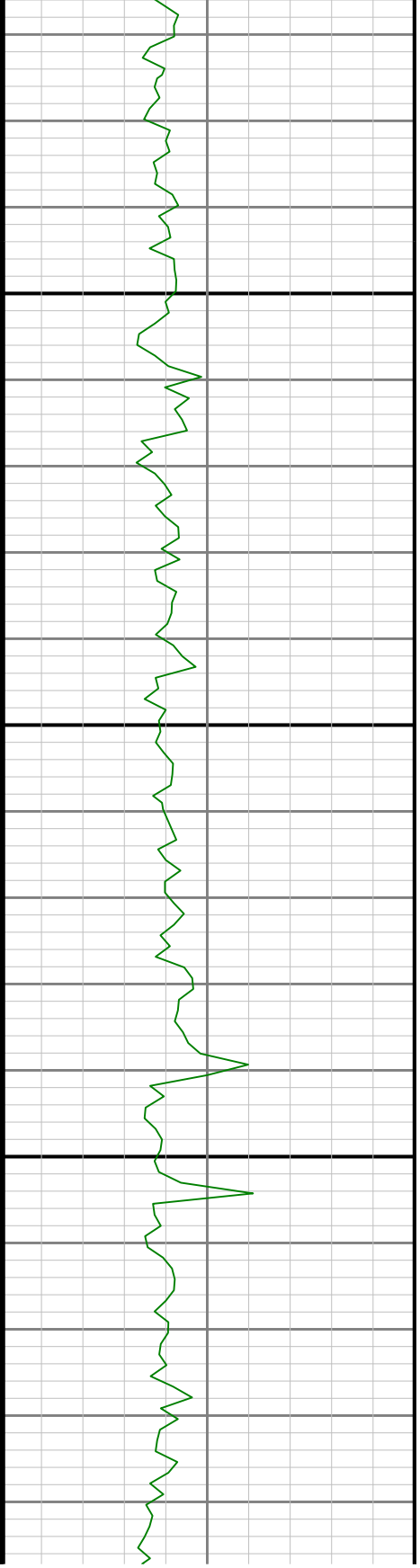


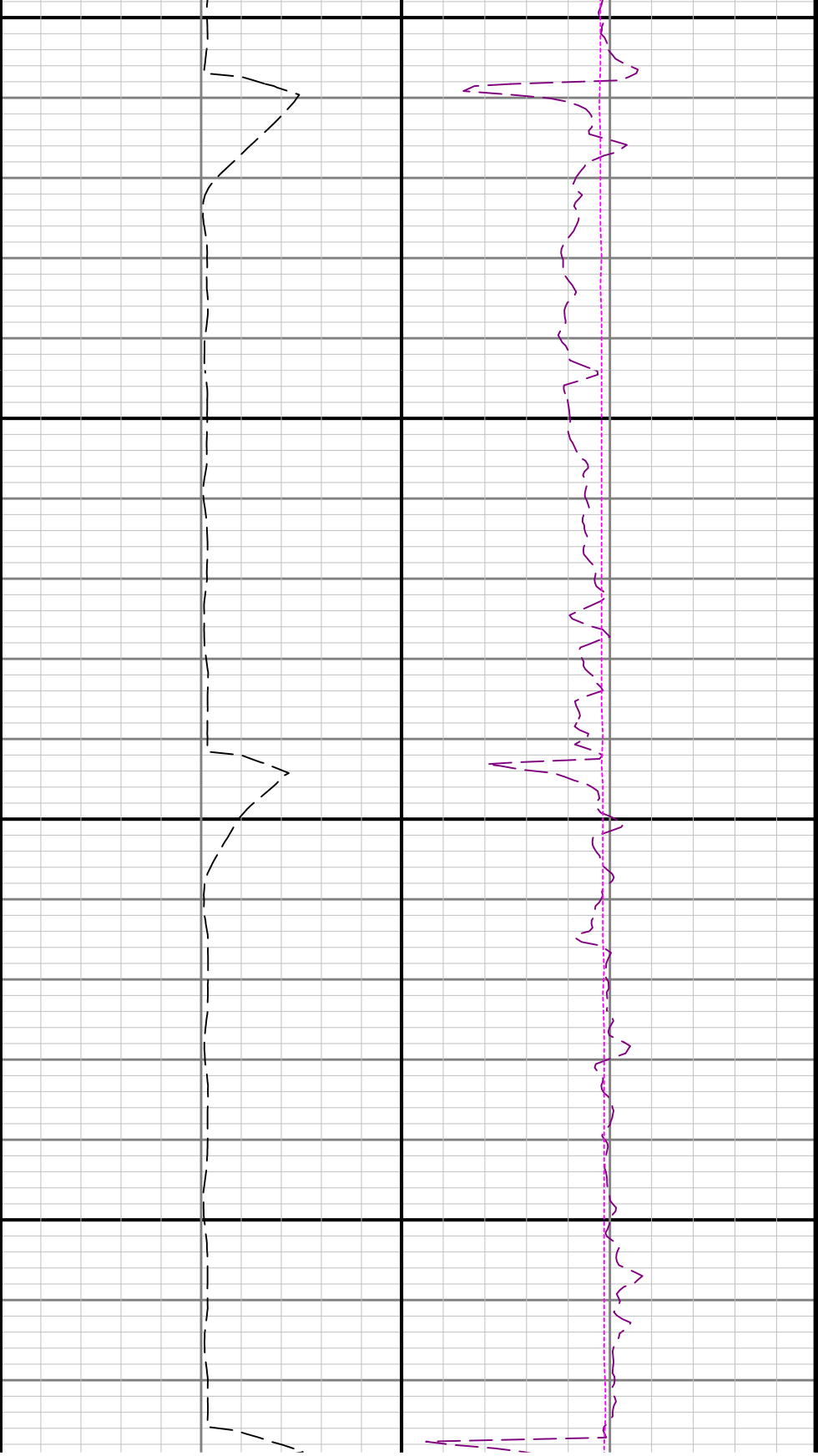
TCDM

WOB_AVG



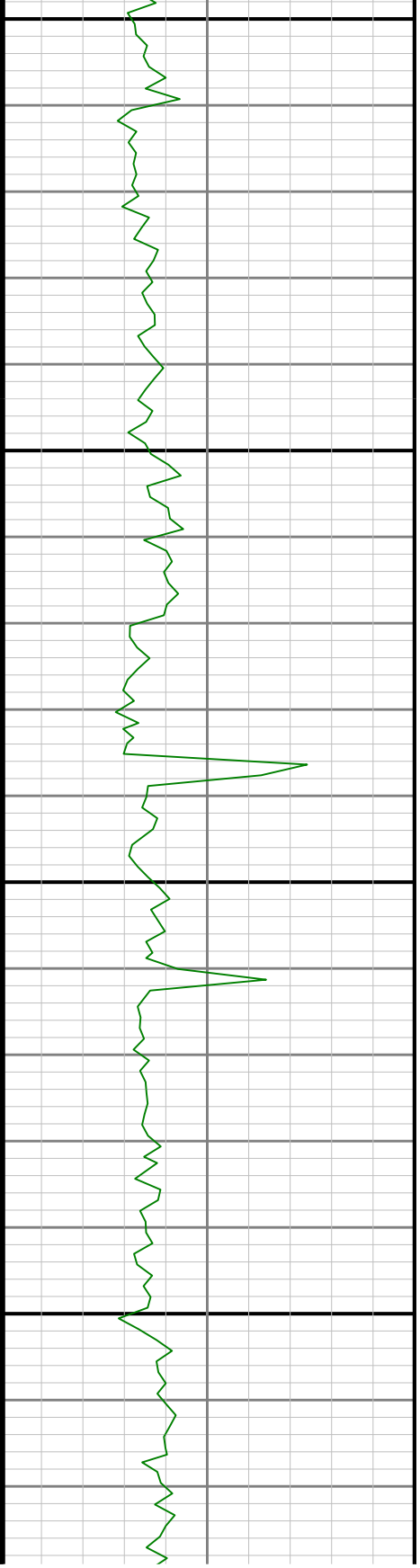
4200

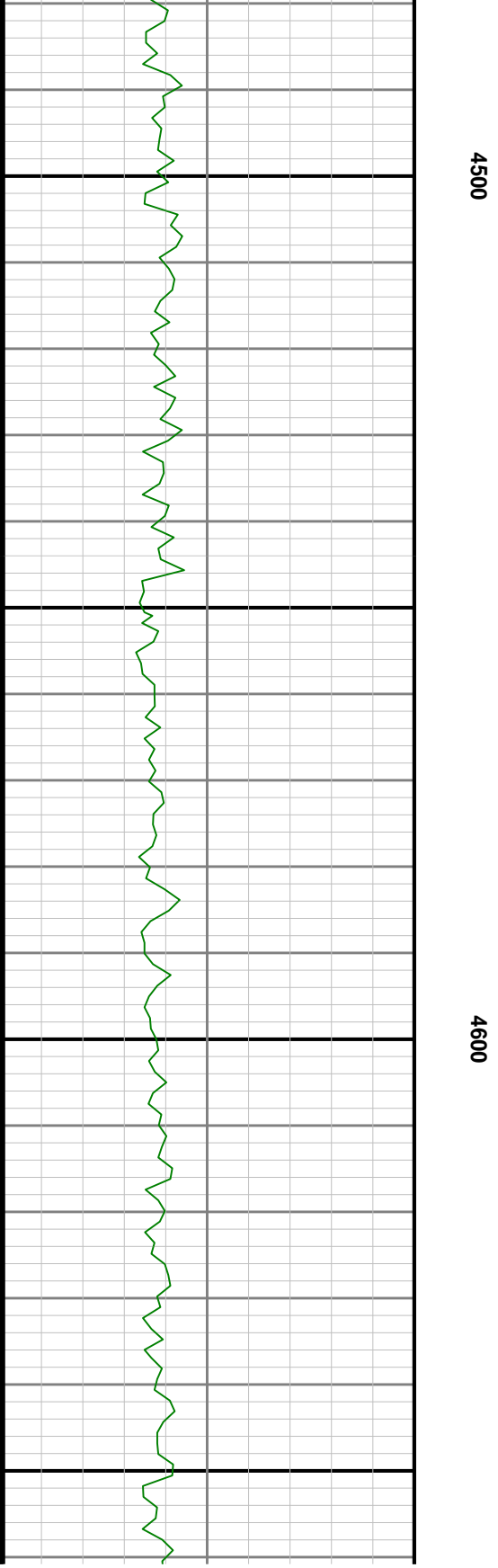
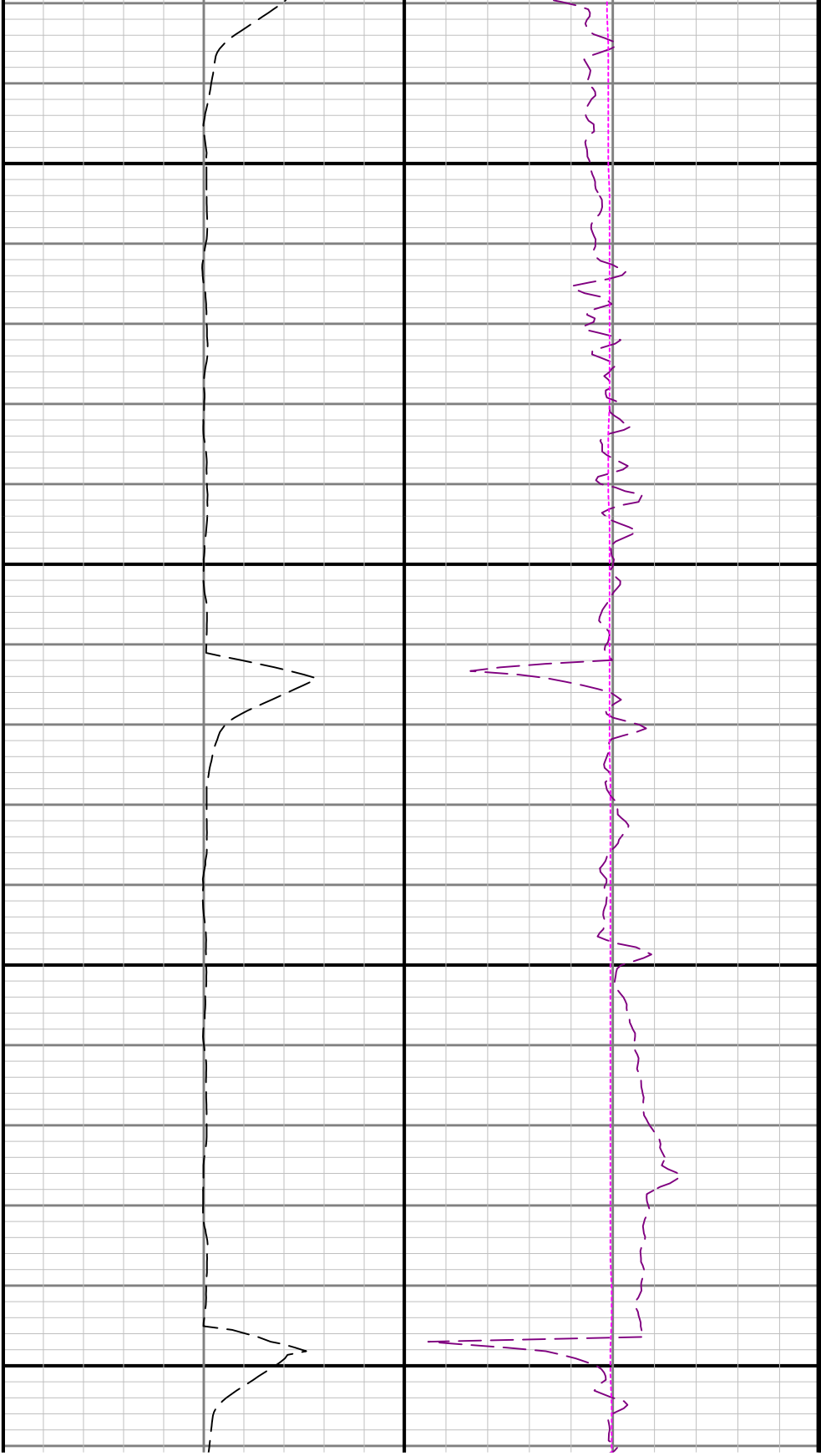


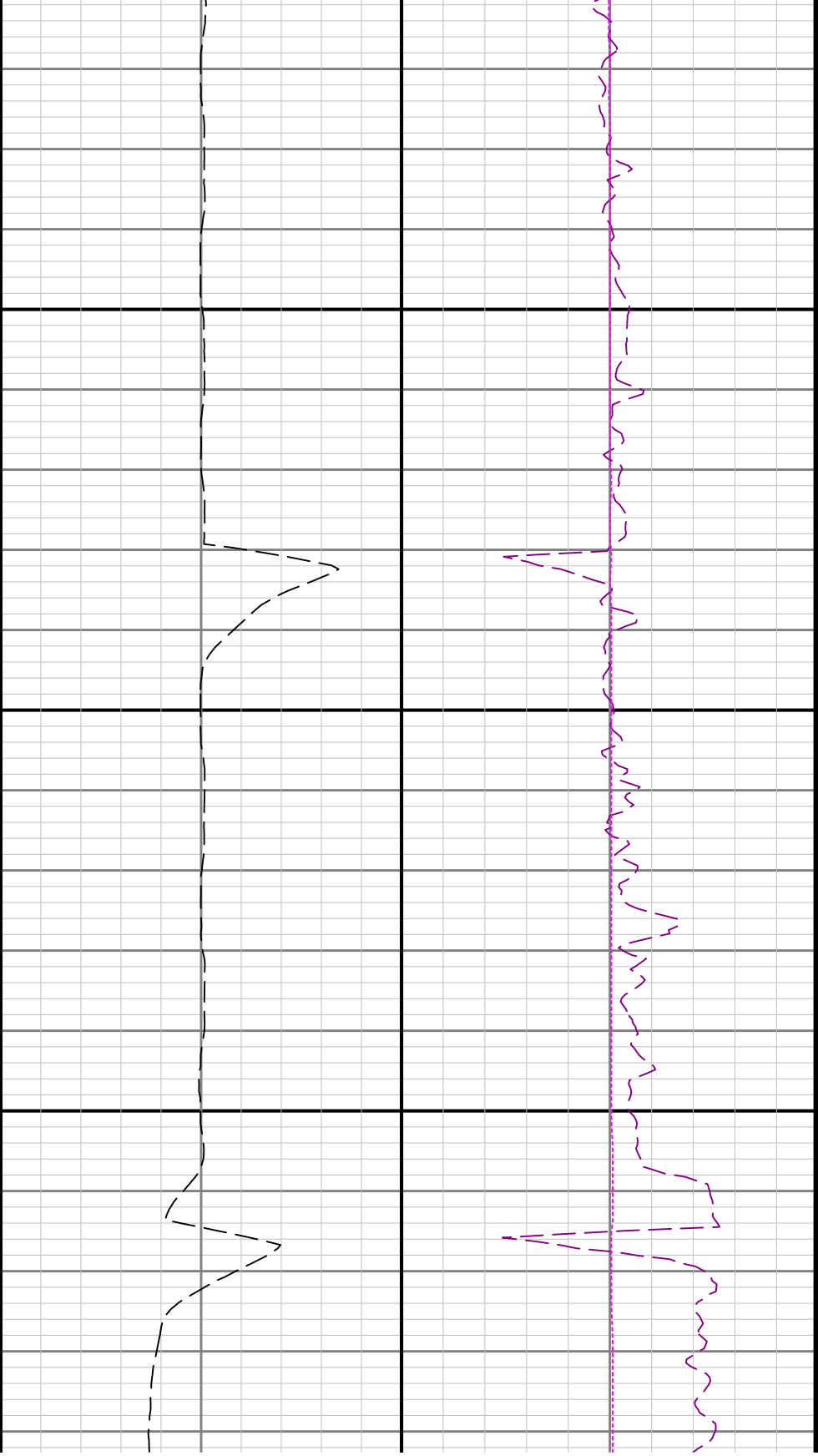


3300

4400

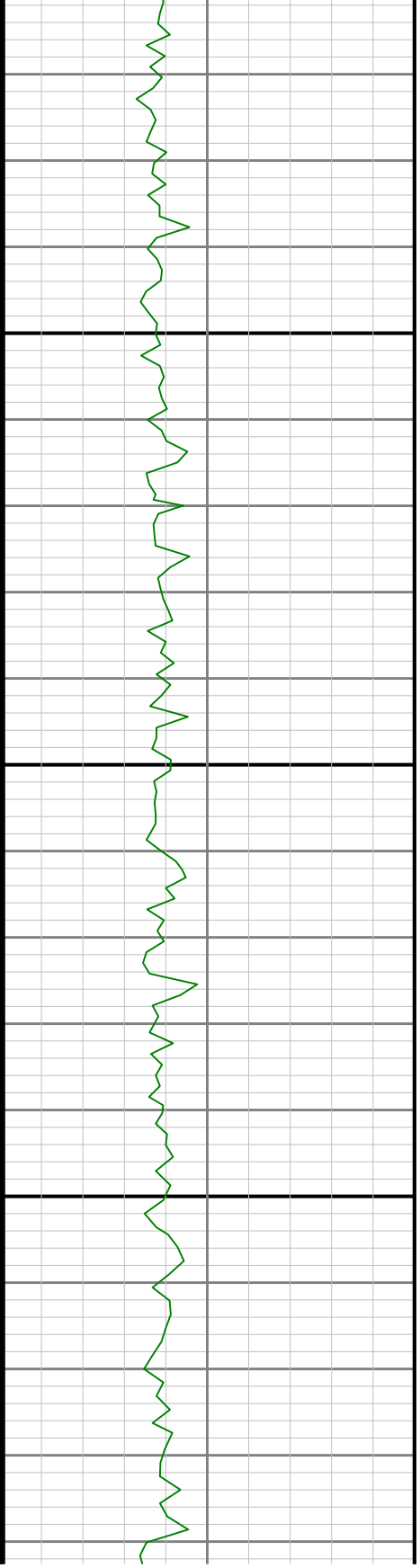


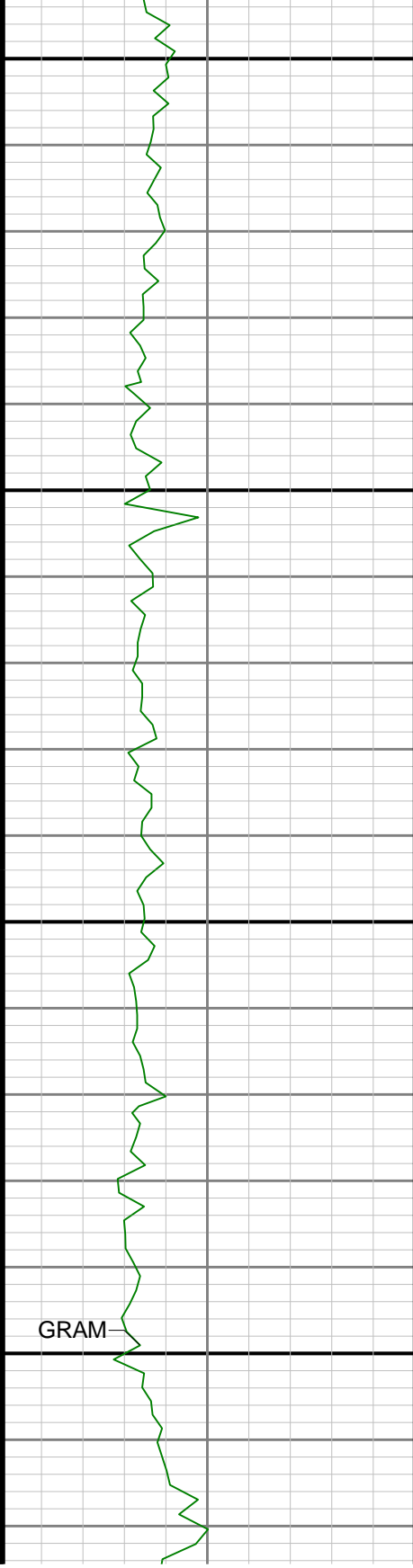




4700

4800





4900

5000

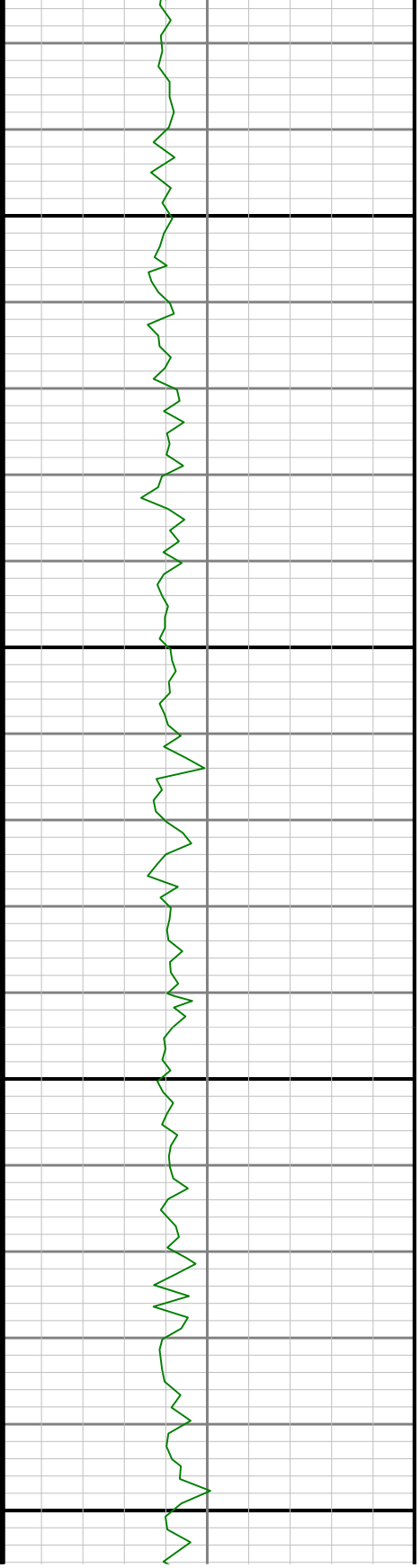
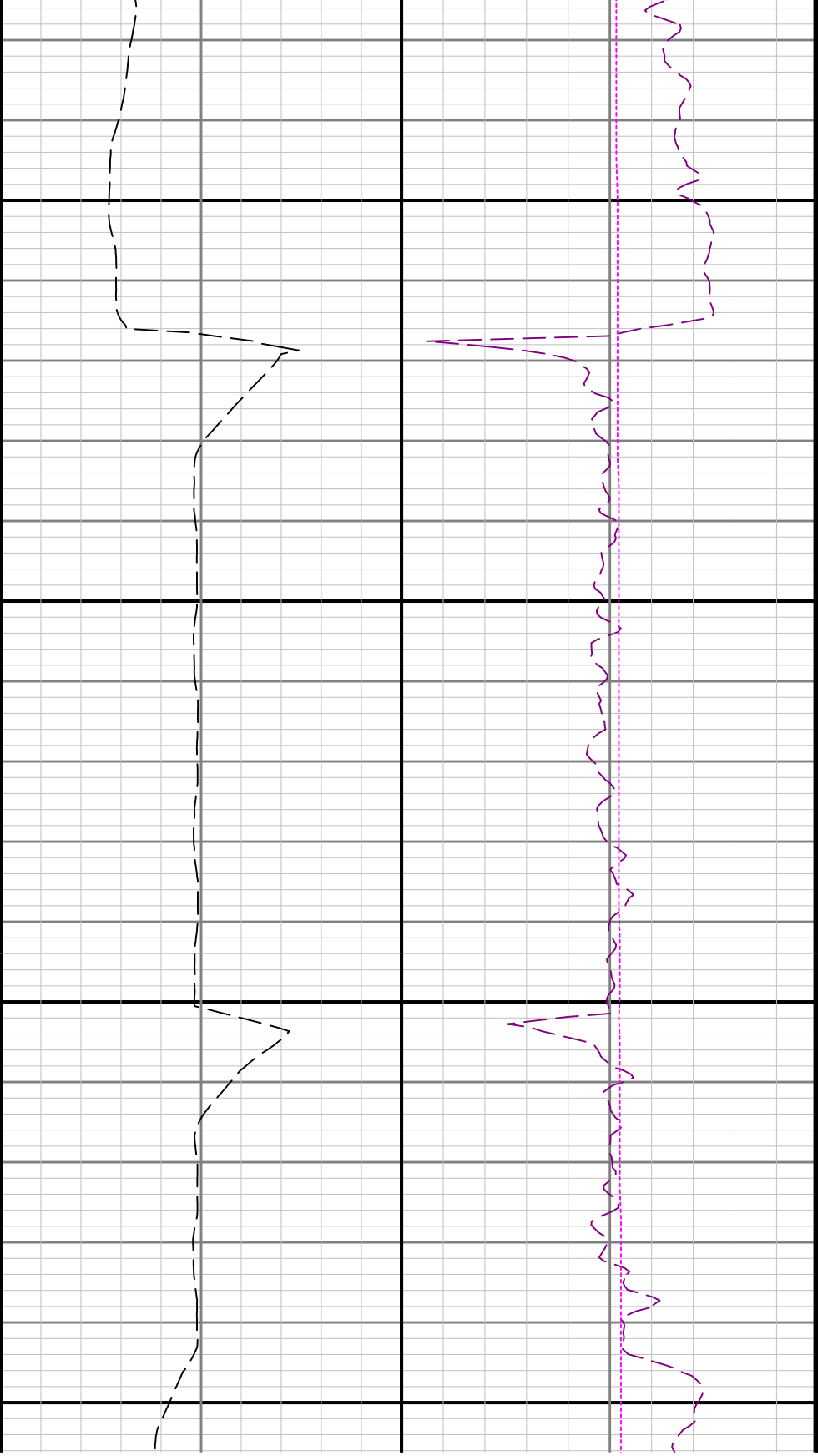
GRAM

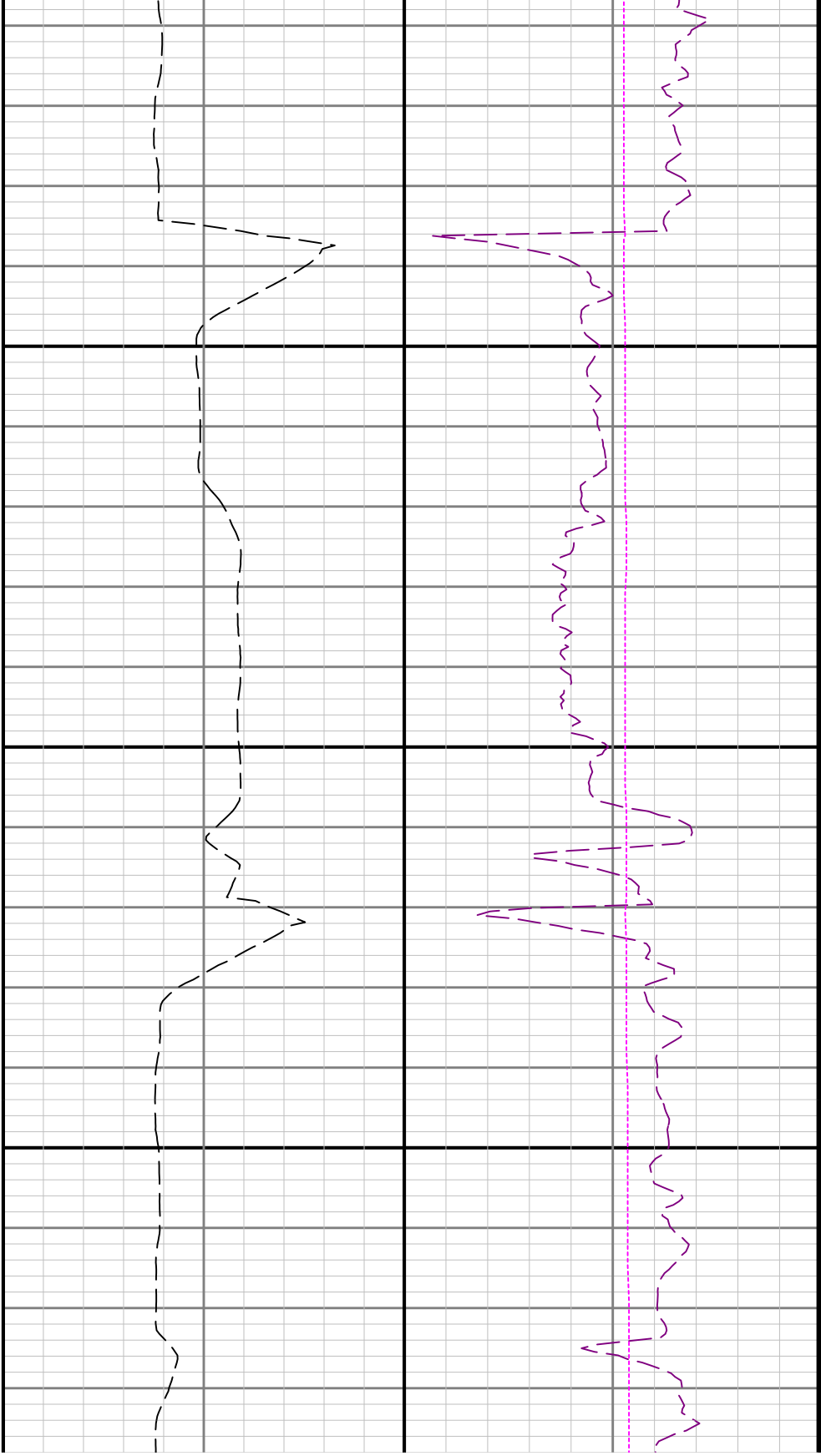


ROP_AVG

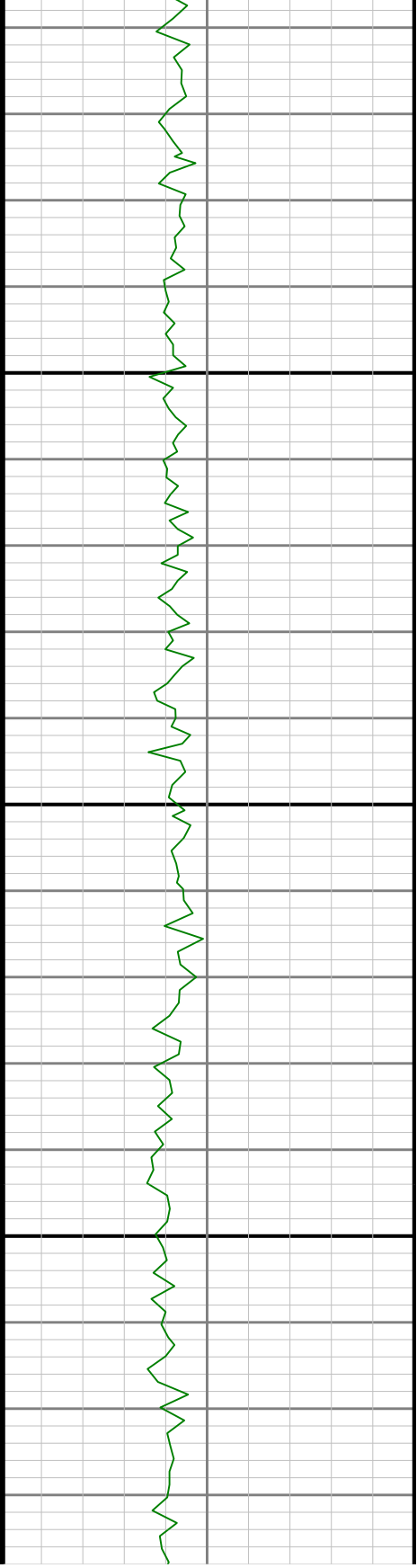
TCDM

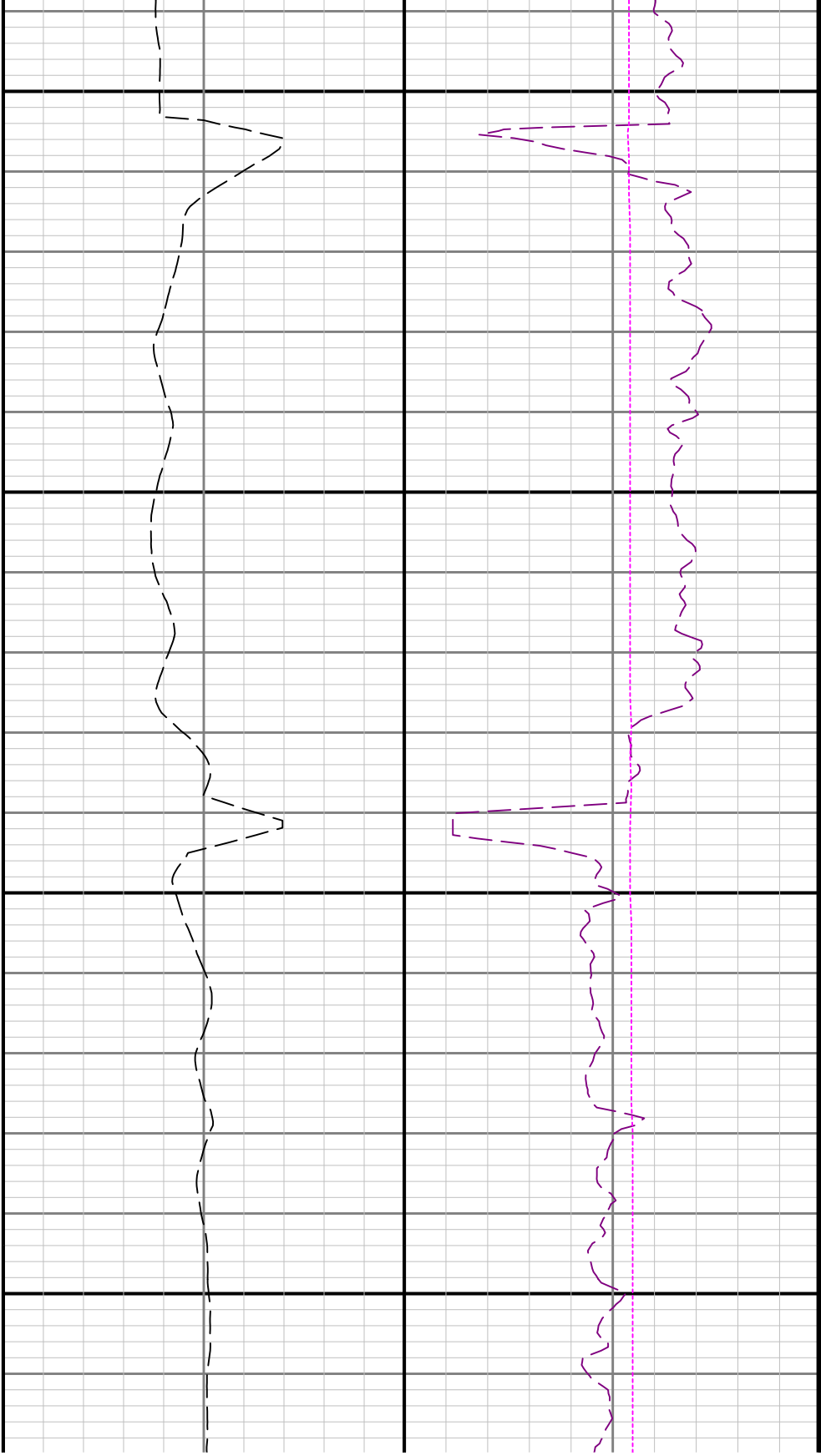
WOB_AVG





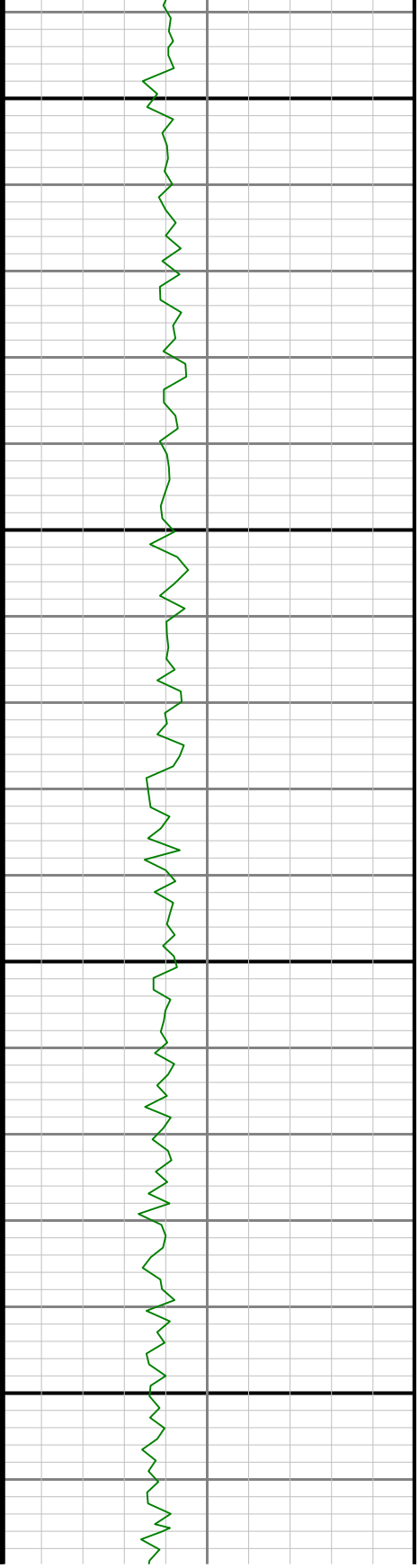
5300

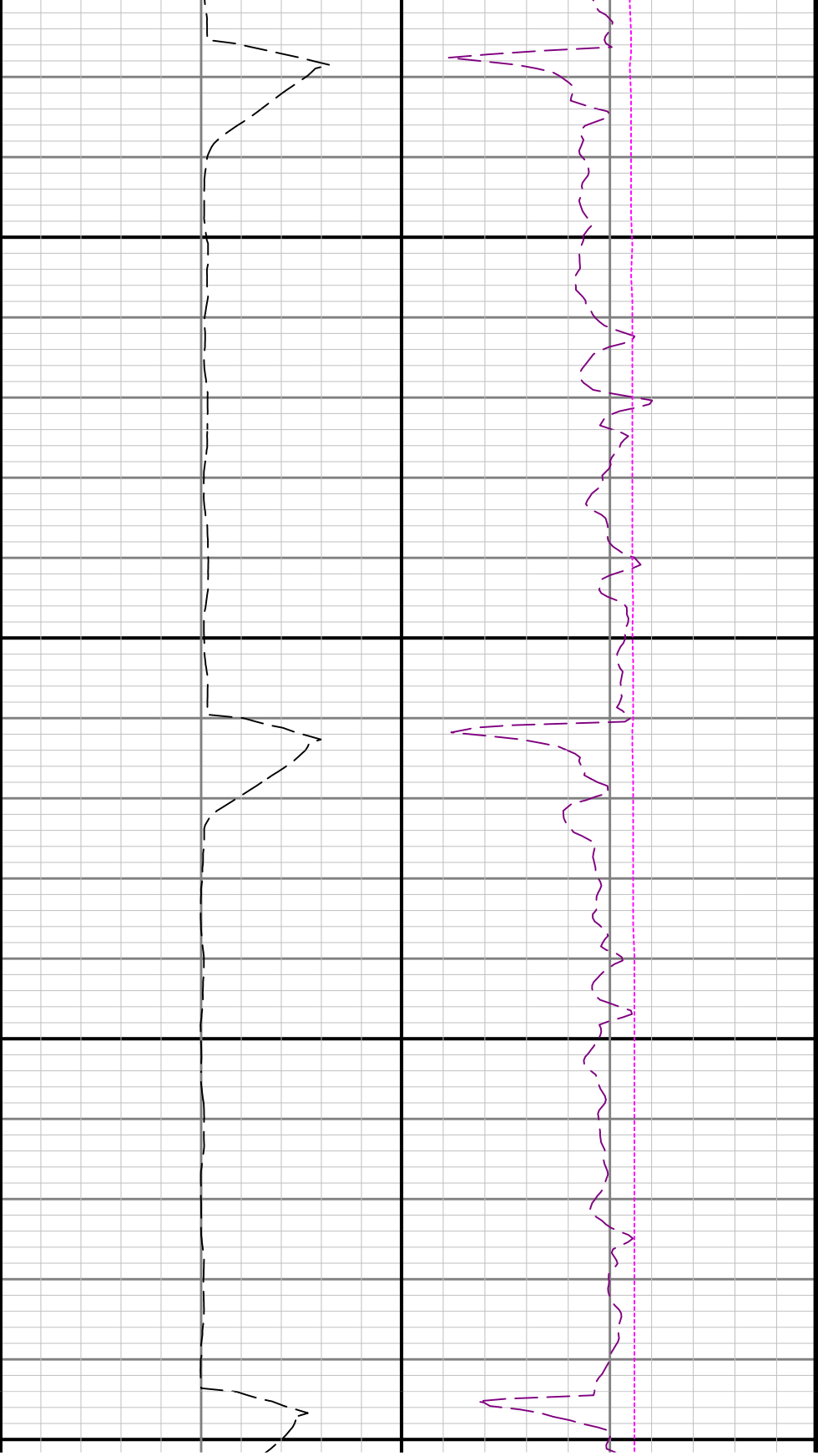




5400

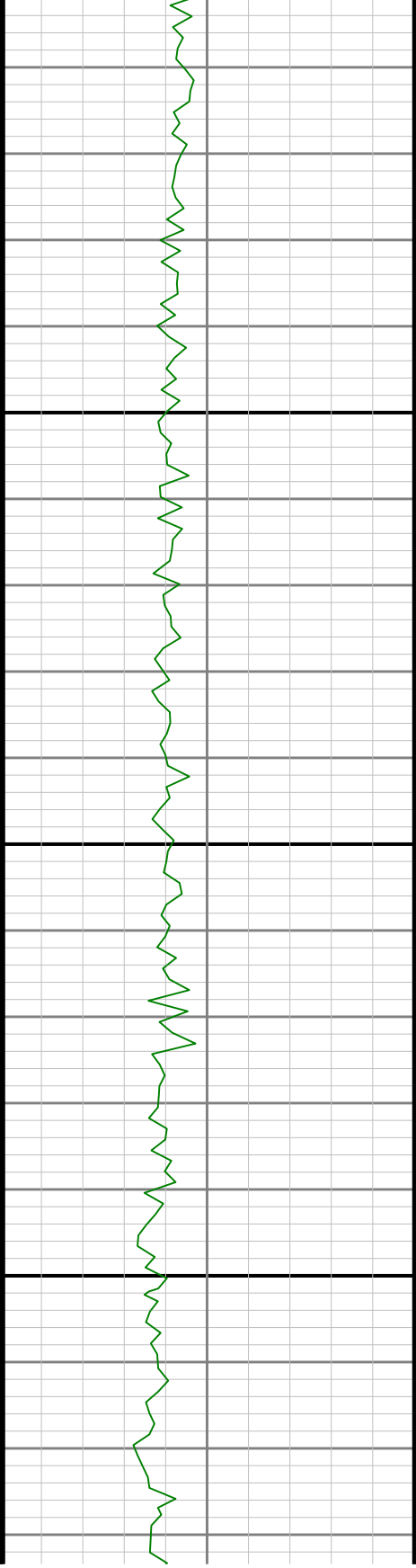
5500





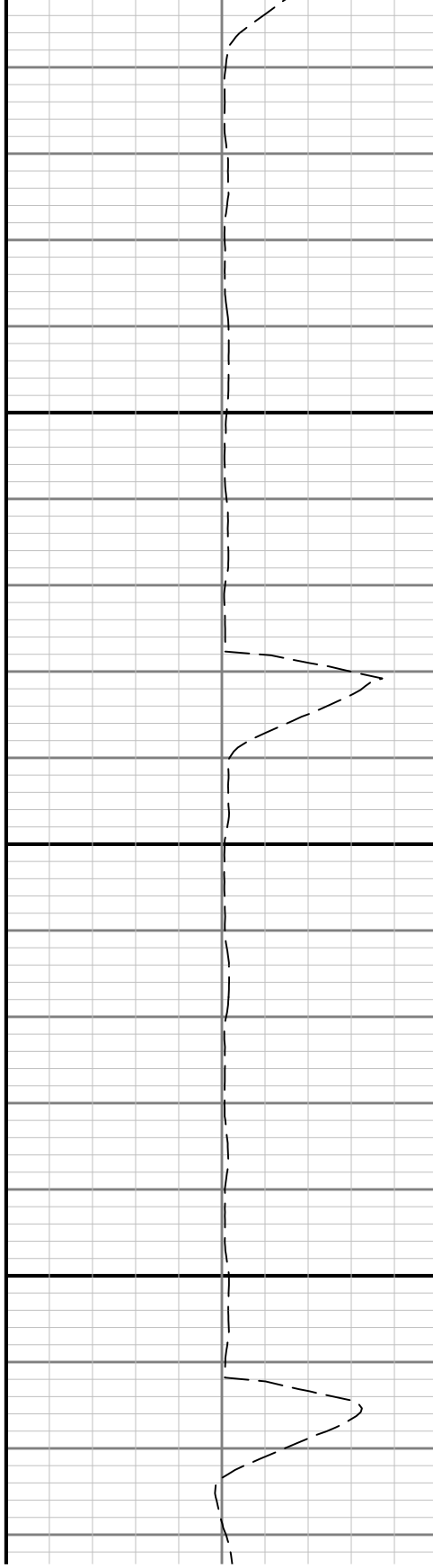
5600

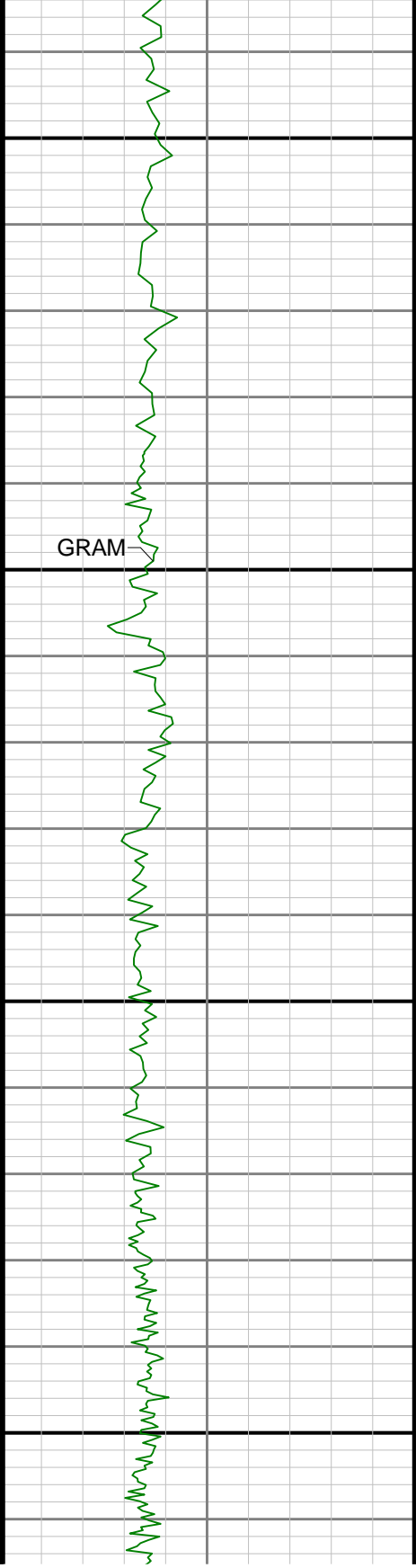
5700



5800

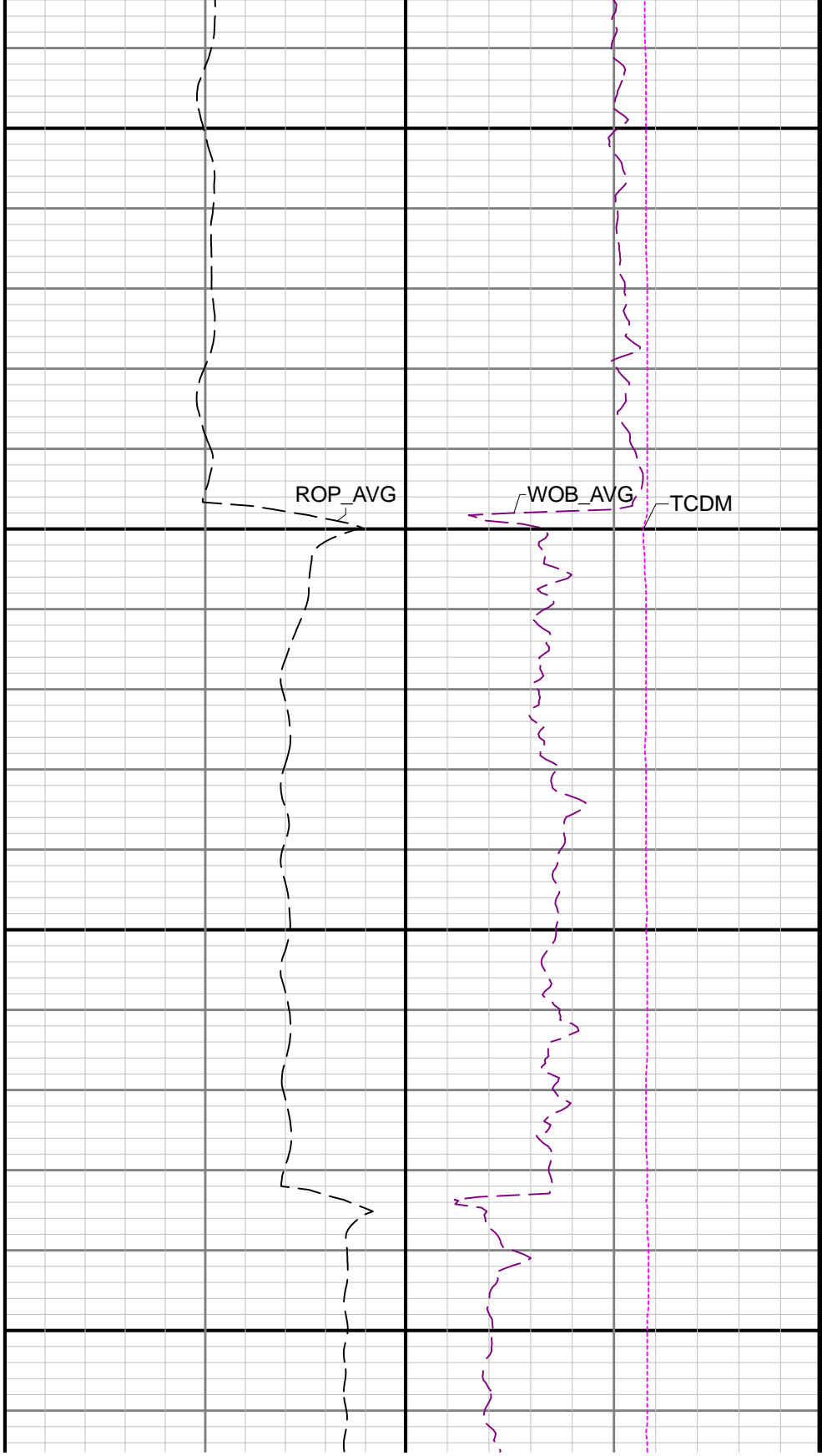
5900

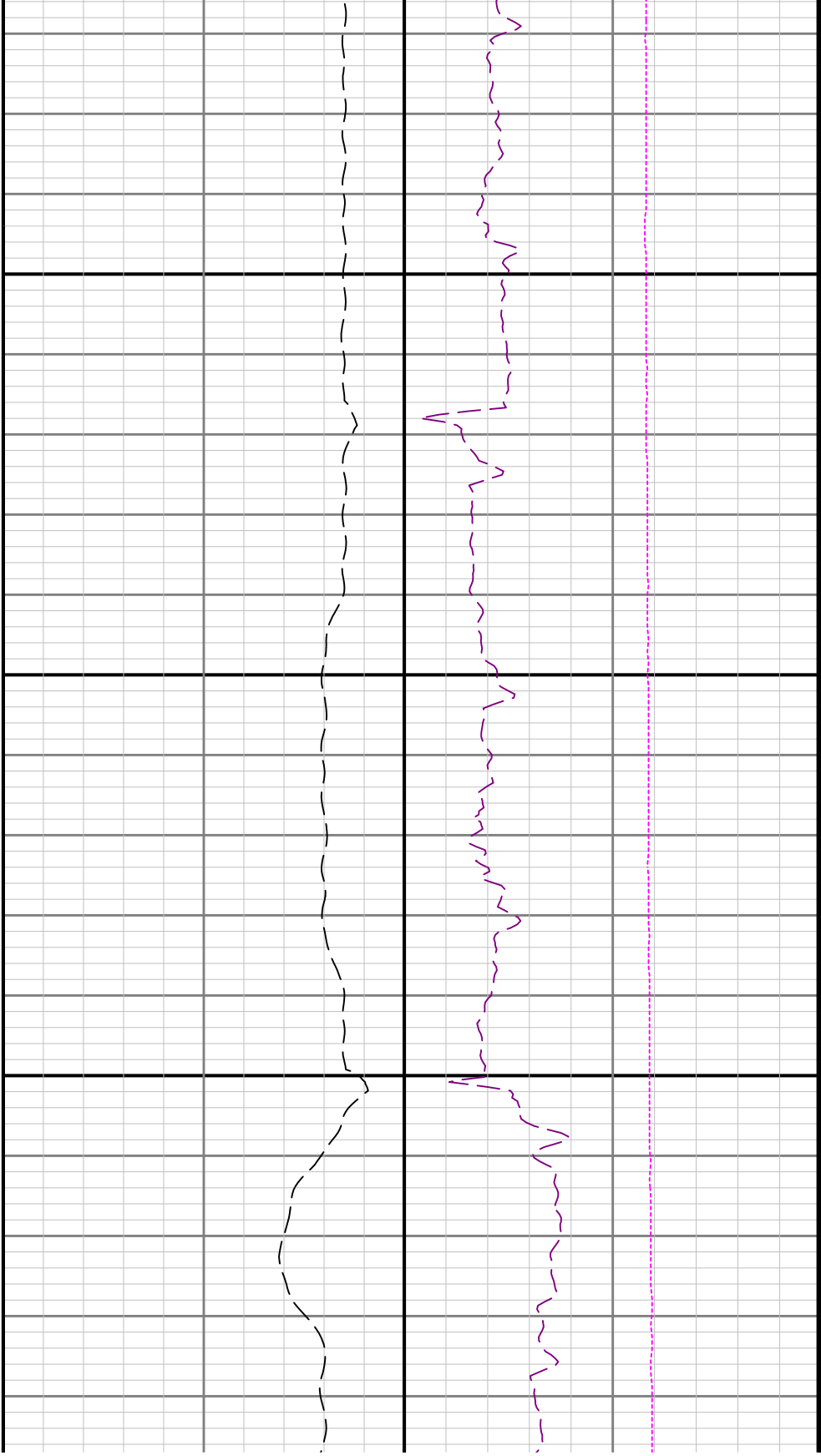




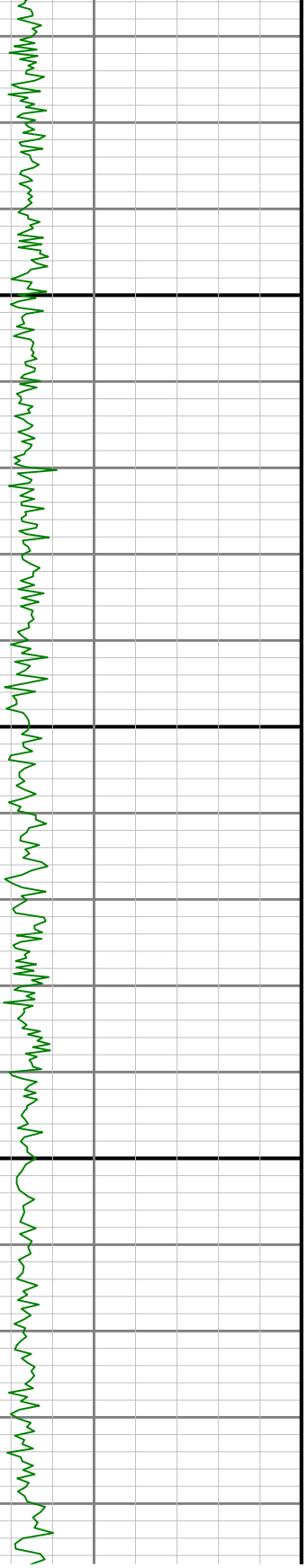
6000

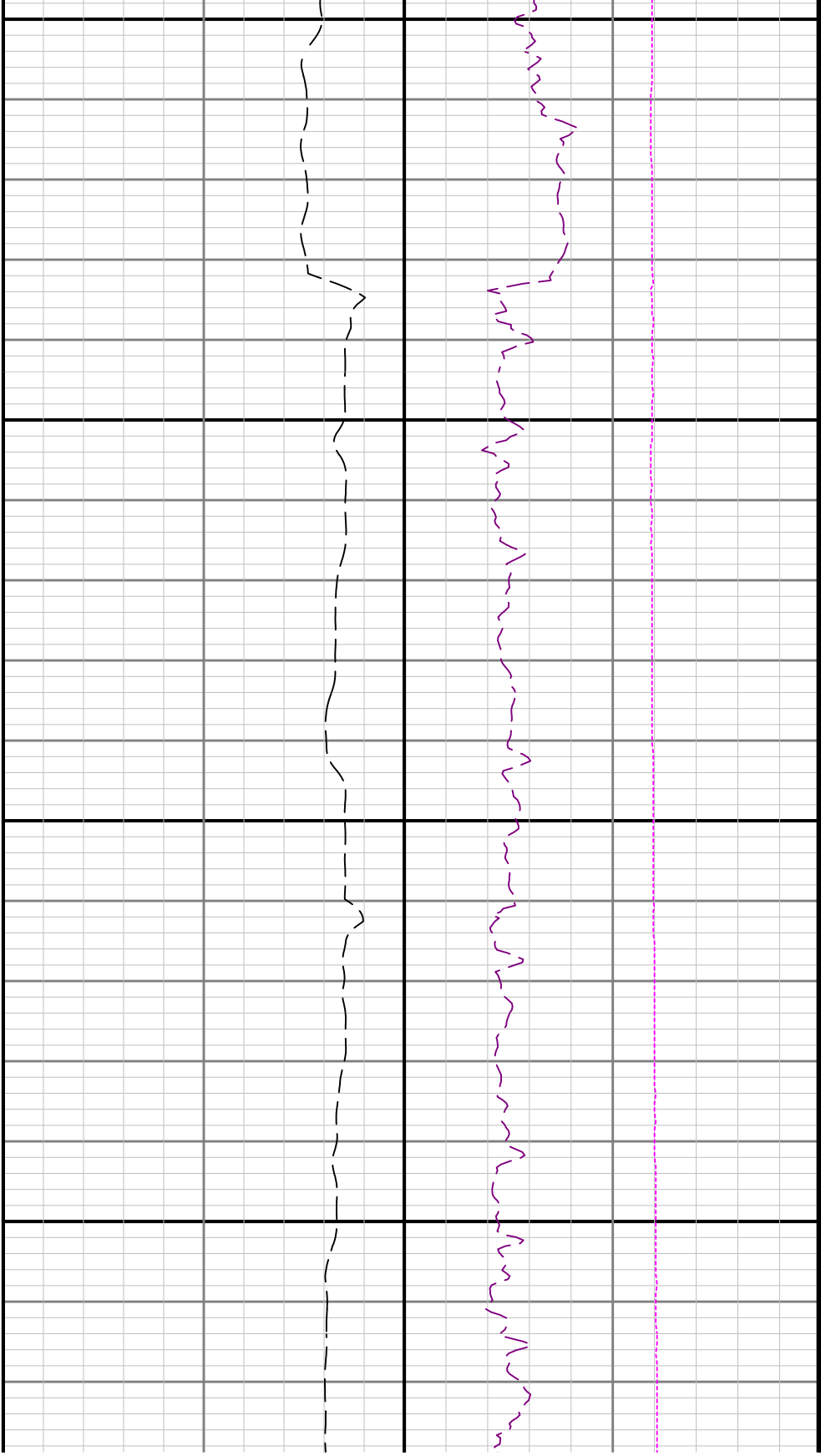
6100





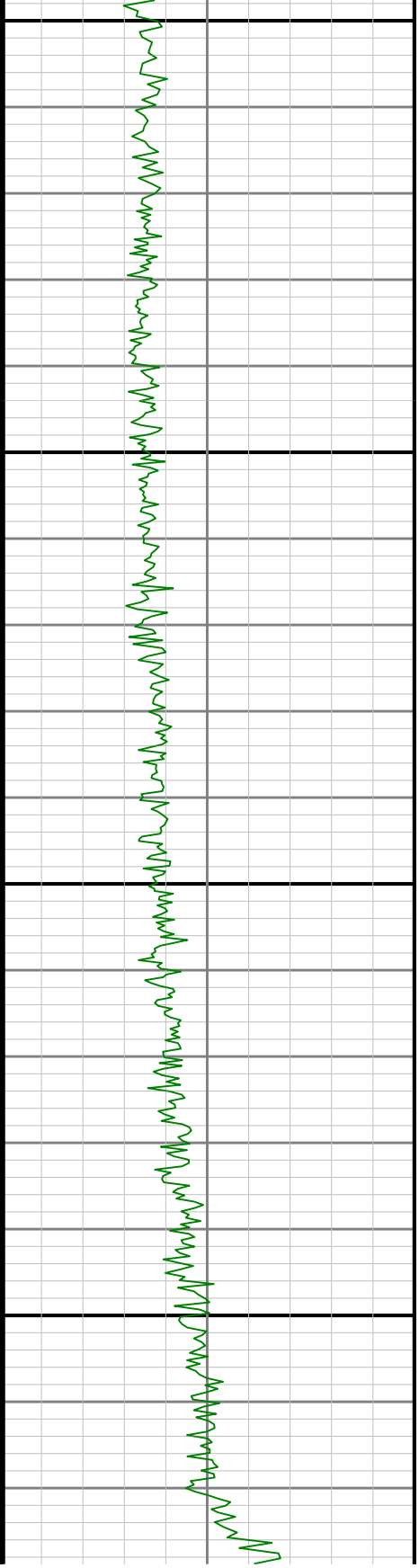
6200

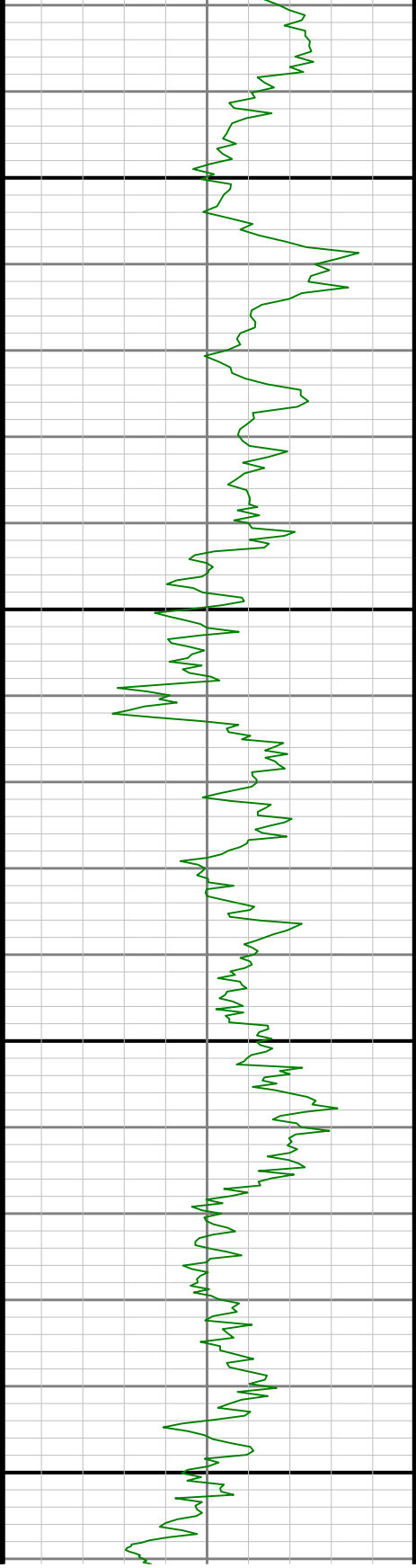




6300

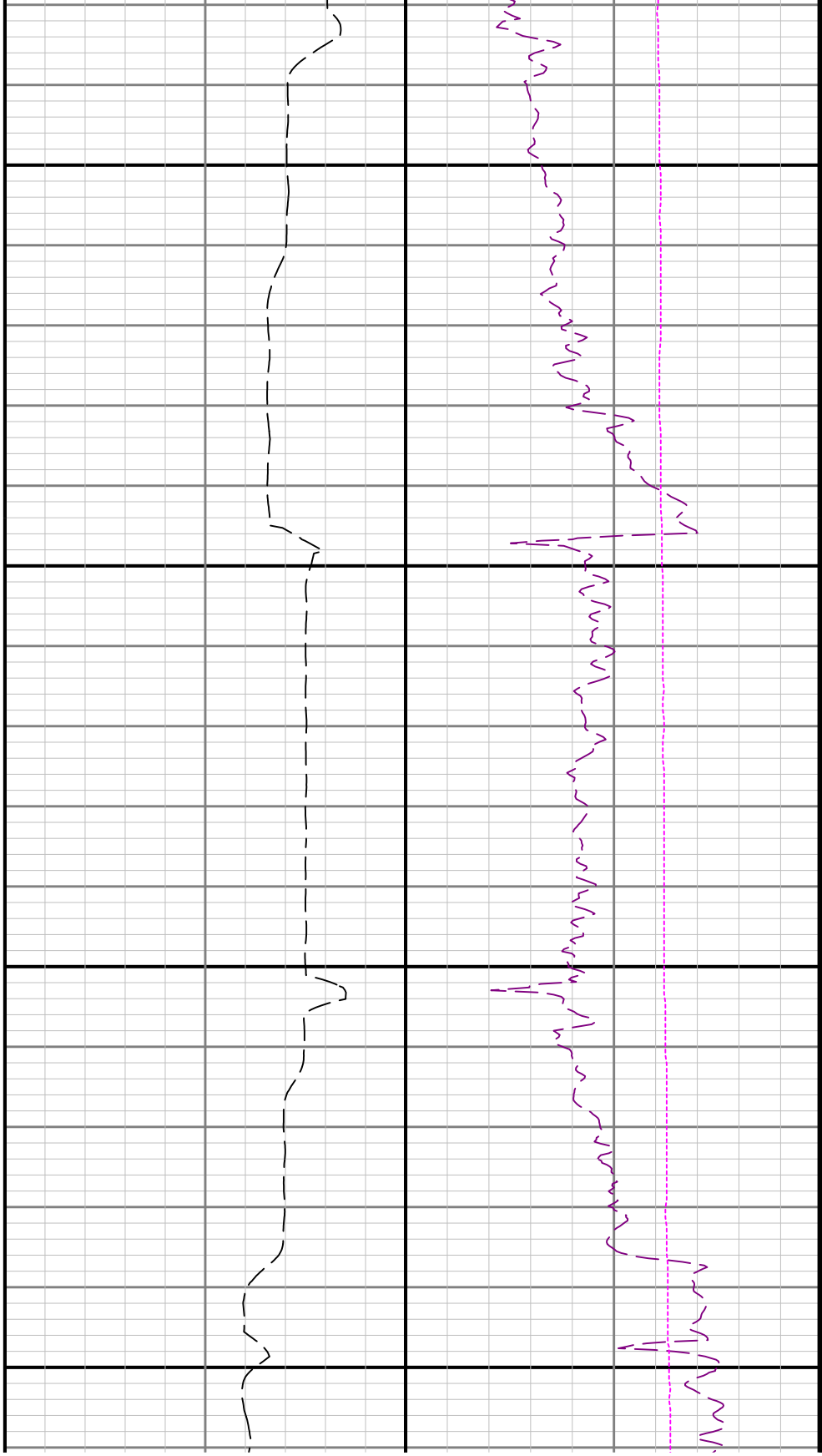
6400

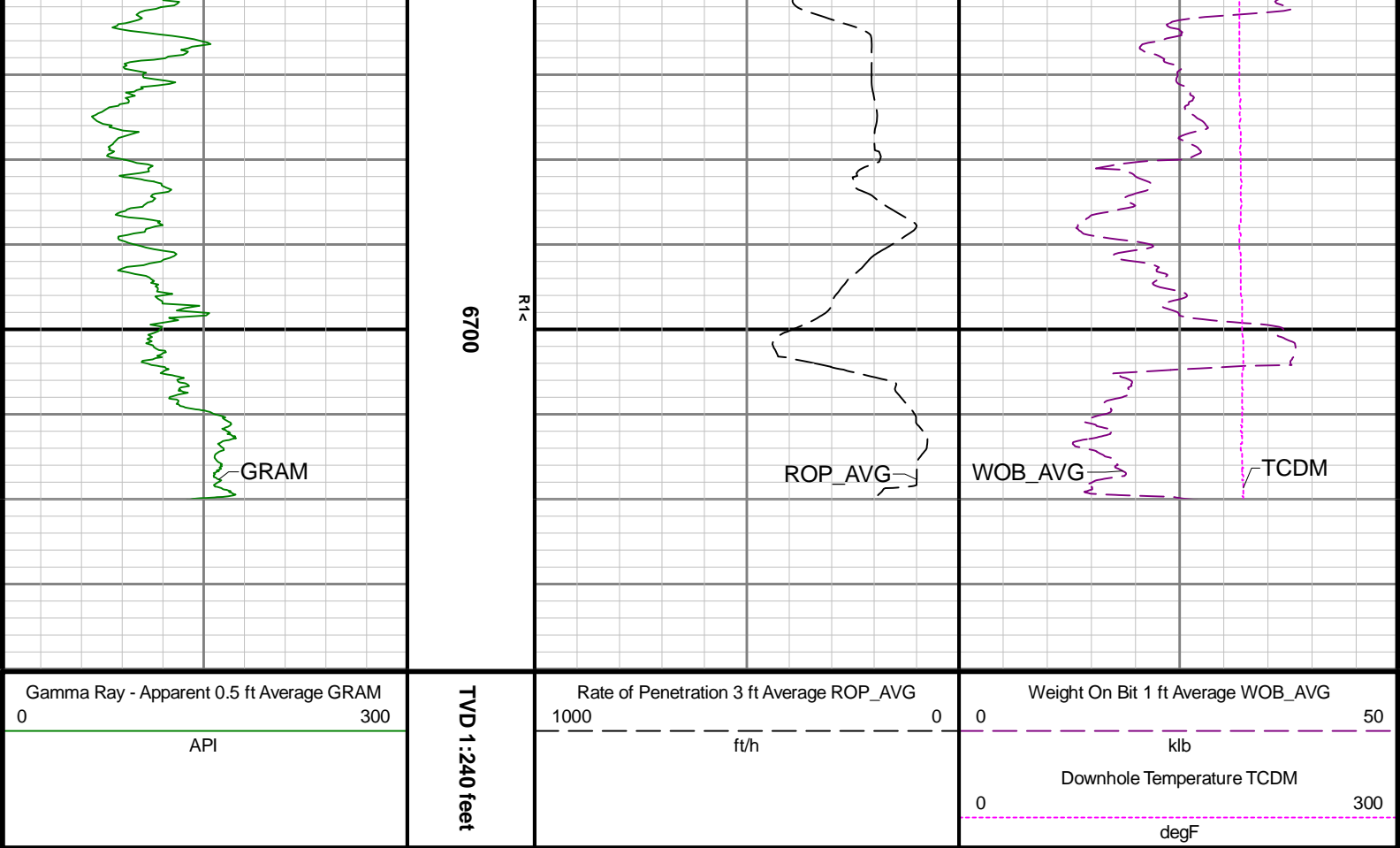




0099

6500





Directional Survey Summary

Latitude:	40° 26' 10.788" N	Longitude:	104° 31' 32.628" W
North Reference:	Grid	Drill Depth Zero:	Rig Floor
Vertical Datum is:	Mean Sea Level	Vertical Datum to DDZ: (ft)	4681.00
Vertical Section North: (ft)	0.00	Vertical Section East: (ft)	0.00
Vertical Section Azimuth: (deg)	348.38		
Grid Convergence: (deg)	-0.63	Magnetic Declination: (deg)	7.74
Total Correction: (deg)	7.11	TVD Calculation Method:	Minimum Curvature
Magnetic Correction:	On	Local Magnetic Field: (nT)	51974
Local Magnetic Dip Angle: (deg)	66.83	Local Gravity Field: (m/s2)	9.800

Tie-In / Projection	Measured Depth (ft)	Inclination (deg)	Azimuth (deg)	Temperature (degF)	North (ft)	East (ft)	True Vertical Depth (ft)	TVD Subsea (ft)	Vertical Section (ft)	Course Length (ft)	Dog Leg Severity (deg/100ft)	Build Rate (deg/100ft)	Turn Rate (deg/100ft)
Tie-In	0.00	0.00	0.00	N/A	0.00	0.00	0.00	-4681.00	0.00	0.00	0.00	0.00	0.00
	82.00	0.34	213.45	N/A	-0.20	-0.13	82.00	-4599.00	-0.17	82.00	0.41	0.41	-178.72
	175.00	0.60	197.70	N/A	-0.90	-0.43	175.00	-4506.00	-0.79	93.00	0.31	0.28	-16.94
	266.00	0.84	203.82	N/A	-1.96	-0.85	265.99	-4415.01	-1.75	91.00	0.28	0.26	6.73
	361.00	0.68	202.27	N/A	-3.12	-1.34	360.98	-4320.02	-2.79	95.00	0.17	-0.17	-1.63
	455.00	0.50	260.18	N/A	-3.71	-1.96	454.98	-4226.02	-3.24	94.00	0.63	-0.19	61.61
	550.00	0.44	268.91	N/A	-3.78	-2.73	549.97	-4131.03	-3.16	95.00	0.10	-0.06	9.19
	645.00	0.22	270.09	N/A	-3.79	-3.28	644.97	-4036.03	-3.05	95.00	0.23	-0.23	1.24
	739.00	0.25	223.94	N/A	-3.94	-3.60	738.97	-3942.03	-3.13	94.00	0.20	0.03	-49.10
	834.00	0.18	262.81	N/A	-4.11	-3.89	833.97	-3847.03	-3.24	95.00	0.17	-0.07	40.92
	928.00	0.30	269.43	N/A	-4.13	-4.29	927.97	-3753.03	-3.18	94.00	0.13	0.13	7.04
	1023.00	0.19	230.88	N/A	-4.23	-4.66	1022.97	-3658.03	-3.20	95.00	0.20	-0.12	-40.58

		1118.00	0.13	249.87	N/A	-4.36	-4.88	1117.97	-3663.03	-3.29	95.00	0.08	-0.06	19.99
		1213.00	0.23	230.63	N/A	-4.52	-5.13	1212.97	-3468.03	-3.40	95.00	0.12	0.11	-20.25
		1307.00	0.30	260.54	N/A	-4.68	-5.52	1306.97	-3374.03	-3.48	94.00	0.16	0.07	31.82
		1402.00	0.37	260.64	N/A	-4.77	-6.07	1401.97	-3279.03	-3.45	95.00	0.07	0.07	0.11
		1497.00	0.18	190.24	N/A	-4.97	-6.40	1496.96	-3184.04	-3.58	95.00	0.37	-0.20	-74.11
		1592.00	0.60	161.63	N/A	-5.59	-6.26	1591.96	-3089.04	-4.21	95.00	0.47	0.44	-30.12
		1686.00	0.92	162.22	N/A	-6.78	-5.88	1685.95	-2995.05	-5.45	94.00	0.34	0.34	0.63
		1781.00	1.20	166.77	N/A	-8.47	-5.42	1780.94	-2900.06	-7.20	95.00	0.31	0.29	4.79
		1876.00	1.60	185.08	N/A	-10.76	-5.31	1875.91	-2805.09	-9.47	95.00	0.63	0.42	19.27
Tie-In		1925.00	1.44	181.31	N/A	-12.06	-5.38	1924.89	-2756.11	-10.72	49.00	0.38	-0.33	-7.69
		1996.00	1.26	162.93	90.5	-13.69	-5.17	1995.87	-2685.13	-12.37	71.00	0.66	-0.25	-25.89
		2090.00	2.77	252.71	96.0	-15.36	-7.04	2089.83	-2591.17	-13.63	94.00	3.23	1.61	95.51
		2185.00	3.76	253.09	101.4	-16.95	-12.21	2184.67	-2496.33	-14.14	95.00	1.04	1.04	0.40
		2279.00	4.80	253.26	104.1	-18.98	-18.93	2278.41	-2402.59	-14.77	94.00	1.11	1.11	0.18
		2374.00	6.68	254.10	141.9	-21.63	-28.05	2372.93	-2308.07	-15.54	95.00	1.98	1.98	0.88
		2468.00	7.57	255.52	106.8	-24.68	-39.30	2466.20	-2214.80	-16.26	94.00	0.97	0.95	1.51
		2563.00	9.90	255.18	109.5	-28.33	-53.26	2560.09	-2120.91	-17.03	95.00	2.45	2.45	-0.36
		2658.00	13.09	253.47	112.2	-33.49	-71.47	2653.18	-2027.82	-18.40	95.00	3.38	3.36	-1.80
		2752.00	17.77	253.59	114.9	-40.57	-95.45	2743.76	-1937.24	-20.51	94.00	4.98	4.98	0.13
		2847.00	19.97	254.08	117.6	-49.12	-124.96	2833.65	-1847.35	-22.94	95.00	2.32	2.32	0.52
		2942.00	22.18	252.97	117.6	-58.82	-157.71	2922.29	-1758.71	-25.85	95.00	2.36	2.33	-1.17
		3036.00	24.24	254.84	120.3	-69.06	-193.30	3008.68	-1672.32	-28.71	94.00	2.33	2.19	1.99
		3131.00	23.75	254.54	123.0	-79.26	-230.56	3095.47	-1585.53	-31.20	95.00	0.53	-0.52	-0.32
		3225.00	23.34	255.15	123.0	-89.08	-266.81	3181.65	-1499.35	-33.52	94.00	0.51	-0.44	0.65
		3320.00	24.37	254.68	125.7	-99.08	-303.90	3268.53	-1412.47	-35.84	95.00	1.10	1.08	-0.49
		3415.00	23.60	255.20	128.4	-109.12	-341.19	3355.32	-1325.68	-38.16	95.00	0.84	-0.81	0.55
		3509.00	25.32	254.65	128.4	-119.25	-378.77	3440.89	-1240.11	-40.51	94.00	1.85	1.83	-0.59
		3604.00	26.51	254.56	131.1	-130.27	-418.80	3526.33	-1154.67	-43.25	95.00	1.25	1.25	-0.09
		3698.00	26.60	254.14	131.1	-141.61	-459.26	3610.41	-1070.59	-46.20	94.00	0.22	0.10	-0.45
		3793.00	26.78	254.23	133.8	-153.24	-500.32	3695.29	-985.71	-49.32	95.00	0.19	0.19	0.09
		3888.00	26.89	254.24	136.5	-164.89	-541.59	3780.06	-900.94	-52.42	95.00	0.12	0.12	0.01
		3982.00	26.58	254.57	136.5	-176.26	-582.32	3864.01	-816.99	-55.35	94.00	0.37	-0.33	0.35
		4077.00	26.44	254.18	139.2	-187.68	-623.16	3949.02	-731.98	-58.31	95.00	0.24	-0.15	-0.41
		4171.00	26.28	254.95	139.2	-198.79	-663.39	4033.25	-647.75	-61.09	94.00	0.40	-0.17	0.82
		4266.00	26.33	254.29	139.2	-209.95	-703.98	4118.41	-562.59	-63.85	95.00	0.31	0.05	-0.69
		4360.00	26.40	254.67	141.9	-221.12	-744.20	4202.64	-478.36	-66.69	94.00	0.19	0.07	0.40
		4455.00	26.51	254.17	141.9	-232.49	-784.97	4287.69	-393.31	-69.61	95.00	0.26	0.12	-0.53
		4550.00	26.35	254.29	144.6	-243.98	-825.66	4372.76	-308.24	-72.67	95.00	0.18	-0.17	0.13
		4644.00	26.34	254.32	144.6	-255.26	-865.82	4457.00	-224.00	-75.64	94.00	0.02	-0.01	0.03
		4739.00	26.09	254.49	147.3	-266.55	-906.24	4542.22	-138.78	-78.55	95.00	0.27	-0.26	0.18
		4834.00	26.92	254.49	147.3	-277.88	-947.09	4627.24	-53.76	-81.42	95.00	0.87	0.87	0.00
		4928.00	27.04	254.12	150.0	-289.42	-988.15	4711.01	30.01	-84.46	94.00	0.22	0.13	-0.39
		5023.00	26.73	255.37	150.0	-300.72	-1029.59	4795.74	114.74	-87.18	95.00	0.68	-0.33	1.32
		5117.00	27.07	255.59	152.7	-311.39	-1070.76	4879.57	198.57	-89.33	94.00	0.38	0.36	0.23
		5212.00	27.27	255.91	155.4	-322.06	-1112.81	4964.09	283.09	-91.32	95.00	0.26	0.21	0.34
		5306.00	25.21	256.19	155.4	-332.09	-1153.14	5048.40	367.40	-93.02	94.00	2.20	-2.19	0.30
		5400.00	26.33	256.06	155.4	-341.89	-1192.81	5133.05	452.05	-94.62	94.00	1.19	1.19	-0.14
		5494.00	26.39	255.71	158.1	-352.07	-1233.29	5217.27	536.27	-96.44	94.00	0.18	0.06	-0.37
		5589.00	26.78	255.77	331.1	-362.54	-1274.49	5302.23	621.23	-98.40	95.00	0.41	0.41	0.06
		5684.00	26.69	255.89	160.8	-373.00	-1315.93	5387.07	706.07	-100.30	95.00	0.11	-0.09	0.13
		5778.00	26.15	255.61	163.5	-383.29	-1356.47	5471.25	790.25	-102.22	94.00	0.59	-0.57	-0.30
		5873.00	26.98	255.52	163.5	-393.89	-1397.61	5556.22	875.22	-104.31	95.00	0.87	0.87	-0.09
		5968.00	27.06	255.52	166.2	-404.68	-1439.40	5640.85	959.85	-106.46	95.00	0.08	0.08	0.00
		6062.00	27.28	255.80	168.9	-415.31	-1480.99	5724.48	1043.48	-108.50	94.00	0.27	0.23	0.30
		6157.00	27.09	255.41	168.9	-426.10	-1523.03	5808.99	1127.99	-110.60	95.00	0.27	-0.20	-0.41
		6251.00	27.19	255.26	171.6	-436.95	-1564.51	5892.64	1211.64	-112.88	94.00	0.13	0.11	-0.16
		6346.00	25.62	255.57	174.3	-447.59	-1605.39	5977.72	1296.72	-115.06	95.00	1.66	-1.65	0.33
		6441.00	25.31	262.90	174.3	-455.23	-1645.44	6063.52	1382.52	-114.47	95.00	3.33	-0.33	7.72
		6535.00	28.58	267.28	174.3	-458.78	-1687.86	6147.31	1466.31	-109.41	94.00	4.07	3.48	4.66
		6630.00	27.96	286.04	177.0	-453.69	-1732.05	6231.14	1550.14	-95.52	95.00	9.34	-0.65	19.75
		6724.00	29.75	303.29	179.7	-434.77	-1772.80	6313.61	1632.61	-68.78	94.00	9.03	1.90	18.35

		6819.00	36.13	312.94	179.7	-402.70	-1813.07	6393.36	1712.36	-29.25	95.00	8.68	6.72	10.16
		6914.00	42.78	327.36	179.7	-356.30	-1851.10	6466.82	1785.82	23.85	95.00	11.88	7.00	15.18
		7008.00	48.56	335.45	185.2	-297.27	-1883.01	6532.54	1851.54	88.10	94.00	8.69	6.15	8.61
		7103.00	55.63	337.90	185.2	-228.46	-1912.59	6590.87	1909.87	161.46	95.00	7.71	7.44	2.58
		7198.00	64.33	341.14	187.9	-151.46	-1941.24	6638.36	1957.36	242.65	95.00	9.62	9.16	3.41
		7293.00	71.16	345.37	190.6	-67.31	-1966.48	6674.33	1993.33	330.15	95.00	8.28	7.19	4.45
		7387.00	77.27	352.53	190.6	21.37	-1983.71	6699.92	2018.92	420.49	94.00	9.79	6.50	7.62
		7482.00	83.71	1.31	193.3	114.79	-1988.67	6715.64	2034.64	512.99	95.00	11.36	6.78	9.24
		7577.00	90.89	3.59	193.3	209.53	-1984.61	6720.11	2039.11	604.97	95.00	7.93	7.56	2.40
		7671.00	90.18	3.38	198.7	303.35	-1978.90	6719.23	2038.23	695.72	94.00	0.79	-0.76	-0.22
		7766.00	89.88	1.02	201.4	398.27	-1975.25	6719.18	2038.18	787.96	95.00	2.50	-0.32	-2.48
		7861.00	90.18	359.96	204.1	493.27	-1974.44	6719.13	2038.13	880.85	95.00	1.16	0.32	-1.12
		7955.00	90.31	359.95	206.8	587.27	-1974.51	6718.73	2037.73	972.94	94.00	0.14	0.14	-0.01
		8050.00	90.06	359.89	209.5	682.27	-1974.64	6718.43	2037.43	1066.02	95.00	0.27	-0.26	-0.06
		8145.00	89.94	359.98	212.2	777.27	-1974.75	6718.43	2037.43	1159.09	95.00	0.16	-0.13	0.09
		8239.00	90.43	359.94	212.2	871.26	-1974.82	6718.12	2037.12	1251.18	94.00	0.52	0.52	-0.04
		8334.00	90.28	0.32	214.9	966.26	-1974.60	6717.53	2036.53	1344.18	95.00	0.43	-0.16	0.40
		8428.00	89.94	359.95	214.9	1060.26	-1974.38	6717.35	2036.35	1436.21	94.00	0.53	-0.36	-0.39
		8523.00	89.54	359.29	217.6	1155.26	-1975.01	6717.78	2036.78	1529.39	95.00	0.81	-0.42	-0.69
		8618.00	90.55	0.32	220.3	1250.26	-1975.33	6717.71	2036.71	1622.50	95.00	1.52	1.06	1.08
		8713.00	89.94	0.04	214.9	1345.25	-1975.03	6717.30	2036.30	1715.49	95.00	0.71	-0.64	-0.29
		8808.00	90.06	359.92	217.6	1440.25	-1975.07	6717.30	2036.30	1808.55	95.00	0.18	0.13	-0.13
		8902.00	90.43	359.88	220.3	1534.25	-1975.23	6716.90	2035.90	1900.66	94.00	0.40	0.39	-0.04
		9091.00	90.00	0.21	223.0	1723.25	-1975.08	6716.19	2035.19	2085.75	189.00	0.29	-0.23	0.17
		9186.00	90.12	0.11	225.7	1818.25	-1974.82	6716.09	2035.09	2178.75	95.00	0.16	0.13	-0.11
		9281.00	90.18	358.68	225.7	1913.24	-1975.82	6715.84	2034.84	2272.00	95.00	1.51	0.06	-1.51
		9375.00	89.63	359.19	228.4	2007.22	-1977.57	6716.00	2035.00	2364.41	94.00	0.80	-0.59	0.54
		9470.00	90.43	358.28	231.1	2102.20	-1979.67	6715.95	2034.95	2457.86	95.00	1.28	0.84	-0.96
		9564.00	90.09	359.28	231.1	2196.18	-1981.67	6715.52	2034.52	2550.31	94.00	1.12	-0.36	1.06
		9659.00	89.88	359.23	233.8	2291.17	-1982.90	6715.55	2034.55	2643.61	95.00	0.23	-0.22	-0.05
		9754.00	89.57	359.08	233.8	2386.16	-1984.30	6716.00	2035.00	2736.93	95.00	0.36	-0.33	-0.16
		9848.00	90.18	358.61	233.8	2480.14	-1986.20	6716.21	2035.21	2829.37	94.00	0.82	0.65	-0.50
		9943.00	90.12	359.38	236.5	2575.12	-1987.86	6715.96	2034.96	2922.74	95.00	0.81	-0.06	0.81
		10037.00	88.46	357.88	236.5	2669.08	-1990.11	6717.13	2036.13	3015.23	94.00	2.38	-1.77	-1.60
		10132.00	89.91	359.16	239.2	2764.03	-1992.56	6718.48	2037.48	3108.73	95.00	2.04	1.53	1.35
		10226.00	90.34	359.24	239.2	2858.02	-1993.88	6718.27	2037.27	3201.06	94.00	0.47	0.46	0.09
		10321.00	90.12	358.46	239.2	2953.00	-1995.78	6717.89	2036.89	3294.47	95.00	0.85	-0.23	-0.82
		10416.00	90.18	359.09	241.9	3047.98	-1997.81	6717.64	2036.64	3387.91	95.00	0.67	0.06	0.66
		10510.00	90.03	358.95	241.9	3141.97	-1999.42	6717.47	2036.47	3480.30	94.00	0.22	-0.16	-0.15
		10605.00	89.82	359.16	244.6	3236.95	-2000.99	6717.59	2036.59	3573.65	95.00	0.31	-0.22	0.22
		10699.00	90.68	359.31	244.6	3330.94	-2002.24	6717.18	2036.18	3665.97	94.00	0.93	0.91	0.16
		10794.00	89.78	359.35	244.6	3425.94	-2003.35	6716.80	2035.80	3759.24	95.00	0.95	-0.95	0.04
		10888.00	90.37	356.94	244.6	3519.93	-2003.12	6716.68	2035.68	3851.26	94.00	1.80	0.63	1.69
		10983.00	90.37	0.11	247.3	3614.93	-2002.25	6716.07	2035.07	3944.13	95.00	0.87	0.00	-0.87
		11078.00	90.25	359.34	250.0	3709.92	-2002.70	6715.55	2034.55	4037.27	95.00	0.82	-0.13	-0.81
		11172.00	90.09	0.31	250.0	3803.92	-2002.99	6715.27	2034.27	4129.40	94.00	1.05	-0.17	1.03
		11267.00	90.46	0.18	250.0	3898.92	-2002.58	6714.82	2033.82	4222.37	95.00	0.41	0.39	-0.14
		11361.00	89.88	359.44	250.0	3992.92	-2002.89	6714.54	2033.54	4314.50	94.00	1.00	-0.62	-0.79
		11456.00	90.15	359.16	250.0	4087.91	-2004.06	6714.51	2033.51	4407.78	95.00	0.41	0.28	-0.29
		11550.00	90.40	0.21	250.0	4181.91	-2004.57	6714.06	2033.06	4499.96	94.00	1.15	0.27	1.12
		11739.00	90.00	359.33	252.7	4370.90	-2005.33	6713.40	2032.40	4685.23	189.00	0.51	-0.21	-0.47
		11834.00	90.15	358.91	252.7	4465.89	-2006.79	6713.28	2032.28	4778.57	95.00	0.47	0.16	-0.44
		11929.00	90.71	359.70	252.7	4560.88	-2007.94	6712.57	2031.57	4871.84	95.00	1.02	0.59	0.83
		12023.00	91.02	0.56	255.4	4654.87	-2007.73	6711.15	2030.15	4963.86	94.00	0.97	0.33	0.91
		12118.00	90.74	0.82	255.4	4749.85	-2006.59	6709.69	2028.69	5056.67	95.00	0.40	-0.29	0.27
		12212.00	90.06	358.21	255.4	4843.83	-2007.38	6709.03	2028.03	5148.89	94.00	2.87	-0.72	-2.78
		12307.00	89.97	357.50	250.0	4938.77	-2010.94	6709.01	2028.01	5242.59	95.00	0.75	-0.09	-0.75
		12401.00	90.43	358.66	255.4	5032.71	-2014.09	6708.68	2027.68	5335.24	94.00	1.33	0.49	1.23
		12496.00	90.18	358.07	255.4	5127.67	-2016.80	6708.17	2027.17	5428.80	95.00	0.67	-0.26	-0.62
		12590.00	89.60	355.81	258.1	5221.53	-2021.81	6708.35	2027.35	5521.75	94.00	2.48	-0.62	-2.40
		12685.00	89.94	356.38	258.1	5316.34	-2028.28	6708.76	2027.76	5615.89	95.00	0.68	0.23	0.69

	12333.00	89.91	358.55	258.1	5818.81	-2032.23	6765.75	2027.75	5818.83	95.00	0.63	0.63	0.63
	12779.00	90.65	358.17	258.1	5410.20	-2032.75	6708.30	2027.30	5708.75	94.00	2.06	0.79	1.90
	12874.00	91.26	359.88	258.1	5505.16	-2034.37	6706.72	2025.72	5802.10	95.00	1.91	0.64	1.80
	12969.00	91.39	0.02	258.1	5600.14	-2034.45	6704.52	2023.52	5895.14	95.00	0.20	0.14	0.15
	13063.00	90.86	359.59	258.1	5694.12	-2034.77	6702.67	2021.67	5987.26	94.00	0.73	-0.56	-0.46
	13158.00	91.48	359.37	260.8	5789.10	-2035.63	6700.73	2019.73	6080.47	95.00	0.69	0.65	-0.23
	13252.00	91.20	359.97	260.8	5883.07	-2036.17	6698.54	2017.54	6172.62	94.00	0.70	-0.30	0.64
	13347.00	91.42	359.41	258.1	5978.04	-2036.69	6696.36	2015.36	6265.75	95.00	0.63	0.23	-0.59
	13442.00	89.60	359.66	260.8	6073.03	-2037.46	6695.52	2014.52	6358.95	95.00	1.93	-1.92	0.26
	13536.00	89.91	359.51	263.5	6167.03	-2038.14	6695.92	2014.92	6451.16	94.00	0.37	0.33	-0.16
	13631.00	89.97	359.97	263.5	6262.03	-2038.57	6696.02	2015.02	6544.29	95.00	0.49	0.06	0.48
	13725.00	90.15	0.72	263.5	6356.02	-2038.01	6695.92	2014.92	6636.25	94.00	0.82	0.19	0.80
	13820.00	90.12	0.29	263.5	6451.02	-2037.17	6695.70	2014.70	6729.13	95.00	0.45	-0.03	-0.45
	13915.00	90.06	0.75	266.2	6546.01	-2036.31	6695.55	2014.55	6822.01	95.00	0.49	-0.06	0.48
	14010.00	90.00	359.86	266.2	6641.01	-2035.80	6695.50	2014.50	6914.96	95.00	0.94	-0.06	-0.94
	14104.00	90.22	0.47	266.2	6735.01	-2035.53	6695.32	2014.32	7006.97	94.00	0.69	0.23	0.65
	14199.00	89.63	359.98	266.2	6830.01	-2035.16	6695.44	2014.44	7099.95	95.00	0.81	-0.62	-0.52
	14294.00	89.57	0.23	266.2	6925.01	-2034.98	6696.11	2015.11	7192.97	95.00	0.27	-0.06	0.26
	14388.00	89.60	0.11	266.2	7019.00	-2034.70	6696.79	2015.79	7284.98	94.00	0.13	0.03	-0.13
	14483.00	89.69	0.32	269.0	7114.00	-2034.35	6697.37	2016.37	7377.96	95.00	0.24	0.09	0.22
	14578.00	89.57	359.69	269.0	7209.00	-2034.34	6697.99	2016.99	7471.01	95.00	0.68	-0.13	-0.66
	14672.00	89.60	359.36	269.0	7302.99	-2035.12	6698.67	2017.67	7563.23	94.00	0.35	0.03	-0.35
	14767.00	89.75	0.65	266.2	7397.99	-2035.11	6699.21	2018.21	7656.28	95.00	1.37	0.16	1.36
	14862.00	89.82	1.18	269.0	7492.98	-2033.59	6699.56	2018.56	7749.01	95.00	0.56	0.07	0.56
	14956.00	89.66	0.78	269.0	7586.96	-2031.98	6699.99	2018.99	7840.75	94.00	0.46	-0.17	-0.43
	15051.00	89.85	0.53	269.0	7681.95	-2030.90	6700.40	2019.40	7933.58	95.00	0.33	0.20	-0.26
	15146.00	89.94	0.85	269.0	7776.95	-2029.75	6700.57	2019.57	8026.39	95.00	0.35	0.09	0.34
	15240.00	90.00	1.82	271.7	7870.92	-2027.56	6700.62	2019.62	8118.00	94.00	1.03	0.06	1.03
	15335.00	89.66	0.02	269.0	7965.90	-2026.04	6700.90	2019.90	8210.73	95.00	1.93	-0.36	-1.89
	15429.00	90.22	359.71	269.0	8059.90	-2026.26	6701.00	2020.00	8302.85	94.00	0.68	0.60	-0.33
	15524.00	89.85	357.97	271.7	8154.88	-2028.18	6700.94	2019.94	8396.26	95.00	1.87	-0.39	-1.83
	15619.00	89.97	359.13	271.7	8249.85	-2030.59	6701.09	2020.09	8489.77	95.00	1.23	0.13	1.22
	15713.00	89.75	358.99	271.7	8343.84	-2032.13	6701.32	2020.32	8582.14	94.00	0.28	-0.23	-0.15
	15808.00	90.09	359.22	271.7	8438.82	-2033.61	6701.45	2020.45	8675.48	95.00	0.43	0.36	0.24
	15902.00	90.31	358.97	271.7	8532.81	-2035.10	6701.13	2020.13	8767.84	94.00	0.35	0.23	-0.27
	15997.00	89.97	359.63	271.7	8627.80	-2036.26	6700.89	2019.89	8861.12	95.00	0.78	-0.36	0.69
	16092.00	90.34	359.90	274.4	8722.80	-2036.65	6700.64	2019.64	8954.25	95.00	0.48	0.39	0.28
	16186.00	89.85	358.09	274.4	8816.78	-2038.30	6700.48	2019.48	9046.64	94.00	1.99	-0.52	-1.93
	16281.00	90.06	358.79	274.4	8911.75	-2040.88	6700.56	2019.56	9140.17	95.00	0.77	0.22	0.74
	16376.00	90.06	359.05	274.4	9006.73	-2042.67	6700.46	2019.46	9233.57	95.00	0.27	0.00	0.27
	16470.00	89.82	358.81	274.4	9100.71	-2044.43	6700.56	2019.56	9325.98	94.00	0.36	-0.26	-0.26
	16565.00	89.91	358.63	274.4	9195.69	-2046.55	6700.78	2019.78	9419.44	95.00	0.21	0.09	-0.19
	16659.00	90.28	359.49	274.4	9289.68	-2048.09	6700.62	2019.62	9511.81	94.00	1.00	0.39	0.91
	16754.00	89.97	358.53	277.1	9384.66	-2049.74	6700.42	2019.42	9605.18	95.00	1.06	-0.33	-1.01
	16849.00	90.34	0.16	277.1	9479.65	-2050.82	6700.16	2019.16	9698.44	95.00	1.76	0.39	1.72
	16943.00	90.06	358.93	277.1	9573.64	-2051.57	6699.83	2018.83	9790.66	94.00	1.34	-0.30	-1.31
	17038.00	90.06	359.82	277.1	9668.64	-2052.60	6699.73	2018.73	9883.91	95.00	0.94	0.00	0.94
	17132.00	90.22	359.48	277.1	9762.64	-2053.18	6699.50	2018.50	9976.10	94.00	0.40	0.17	-0.36
	17227.00	90.15	358.97	277.1	9857.63	-2054.46	6699.19	2018.19	10069.40	95.00	0.54	-0.07	-0.54
	17321.00	90.18	359.59	274.4	9951.62	-2055.64	6698.92	2017.92	10161.71	94.00	0.66	0.03	0.66
	17394.00	89.82	359.08	274.4	10024.61	-2056.49	6698.92	2017.92	10233.38	73.00	0.86	-0.49	-0.70
Projection	17418.00	89.82	359.08	N/A	10048.61	-2056.88	6699.00	2018.00	10256.96	24.00	0.00	0.02	-0.00