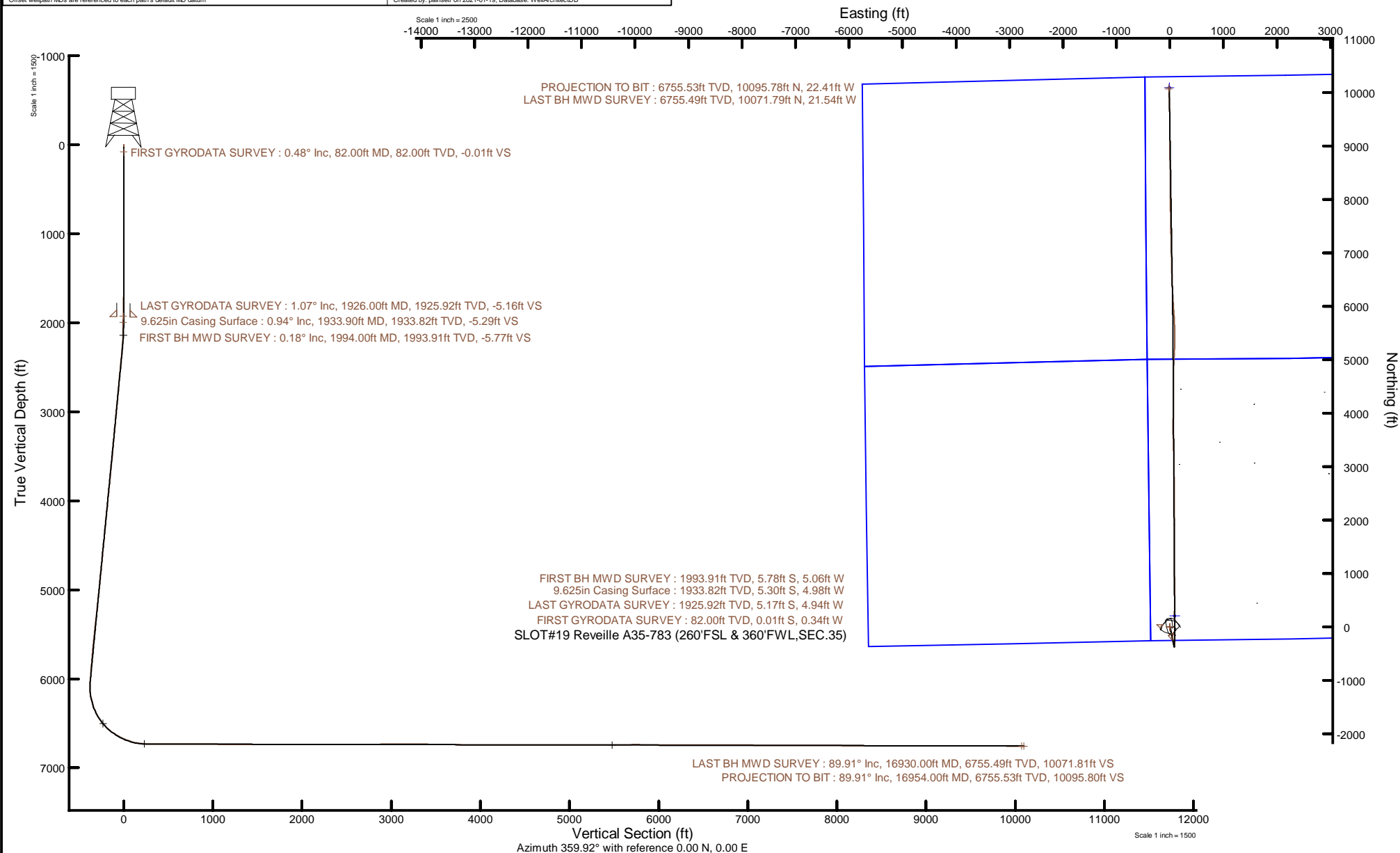


NOBLE ENERGY, INC

Location: COLORADO Slot: SLOT#19 Reveille A35-783 (260'FSL & 360'FWL,SEC.35)
Field: WELD COUNTY (NOBLE NAD 83 GRID) Well: Reveille A35-783
Facility: SEC.35-T06N-R64W Wellbore: Reveille A35-783 PWB



Plot reference wellpath is Reveille A35-783 PWP Rev-A.0	Grid System: NAD83 / Lambert Colorado SP, Northern Zone (501), US feet
True vertical depths are referenced to H&P 517 (30) (RT)	North Reference: Grid north
Reference wellpath measured depths are referenced to H&P 517 (30) (RT)	Scale: True distance
H&P 517 (30) (RT) to Mean Sea Level: 4679 feet	Coordinates are in feet referenced to Slot
Mean Sea Level to Mud line (At Slot: SLOT#19 Reveille A35-783 (260'FSL & 360'FWL,SEC.35)): 0 feet	Depths are in feet
Offset wellpath MDs are referenced to each path's default MD datum	Created by: painsetr on 2021-01-19; Database: WellArchitectDB



REFERENCE WELLPATH IDENTIFICATION

Operator	NOBLE ENERGY, INC	Well	Reveille A35-783
Field	WELD COUNTY (NOBLE NAD 83 GRID)	API	0512350799
Facility	SEC.35-T06N-R64W	Wellbore	Reveille A35-783 AWB
Slot	SLOT#19 Reveille A35-783 (260'FSL & 360'FWL,SEC.35)		

REPORT SETUP INFORMATION

Projection System	NAD83 / Lambert Colorado SP, Northern Zone (501), US feet	Software System	WellArchitect® 6.0
North Reference	Grid	User	Painsetr
Scale	0.999962	Report Generated	1/19/2021 at 2:25:07 PM
Convergence at slot	0.63° East	Database	WellArchitectDB

WELLPATH LOCATION

	Local coordinates		Grid coordinates		Geographic coordinates	
	North[ft]	East[ft]	Easting[US ft]	Northing[US ft]	Latitude	Longitude
Slot Location	-1916.87	-75.81	3271263.00	1403285.93	40.4363300°	-104.5254800°
Facility Reference Pt			3271338.81	1405202.72	40.4415890°	-104.5251320°
Field Reference Pt			3000000.00	4454105.15	48.7761986°	-105.5000000°

WELLPATH DATUM

Calculation method	Minimum curvature	H&P 517 (30') (RT) to Facility Vertical Datum	4679.00ft
Horizontal Reference Pt	Slot	H&P 517 (30') (RT) to Mean Sea Level	4679.00ft
Vertical Reference Pt	H&P 517 (30') (RT)	H&P 517 (30') (RT) to Mud Line at Slot (SLOT#19 Reveille A35-783 (260'FSL & 360'FWL,SEC.35))	4679.00ft
MD Reference Pt	H&P 517 (30') (RT)	Section Origin	N 0.00, E 0.00 ft
Field Vertical Reference	Mean Sea Level	Section Azimuth	359.92°

REFERENCE WELLPATH IDENTIFICATION

Operator	NOBLE ENERGY, INC	Well	Reveille A35-783
Field	WELD COUNTY (NOBLE NAD 83 GRID)	API	0512350799
Facility	SEC.35-T06N-R64W	Wellbore	Reveille A35-783 AWB
Slot	SLOT#19 Reveille A35-783 (260'FSL & 360'FWL,SEC.35)		

WELLPATH DATA (179 stations)

MD [ft]	Inclination [°]	Azimuth [°]	TVD [ft]	Vert Sect [ft]	North [ft]	East [ft]	Grid East [US ft]	Grid North [US ft]	Latitude	Longitude	DLS [°/100ft]	Comments
0.00	0.000	267.670	0.00	0.00	0.00	0.00	3271263.00	1403285.93	40.4363300	-104.5254800	0.00	
82.00	0.480	267.670	82.00	-0.01	-0.01	-0.34	3271262.66	1403285.92	40.4363300	-104.5254812	0.59	FIRST GYRODATA SURVEY
175.00	0.240	254.740	175.00	-0.08	-0.08	-0.92	3271262.08	1403285.85	40.4363298	-104.5254833	0.27	
266.00	0.050	276.950	266.00	-0.12	-0.13	-1.14	3271261.86	1403285.80	40.4363297	-104.5254841	0.21	
361.00	0.140	321.760	361.00	-0.03	-0.03	-1.26	3271261.74	1403285.90	40.4363300	-104.5254845	0.12	
455.00	0.340	349.140	455.00	0.34	0.33	-1.38	3271261.62	1403286.26	40.4363310	-104.5254850	0.24	
550.00	0.150	118.690	550.00	0.55	0.55	-1.32	3271261.68	1403286.48	40.4363316	-104.5254847	0.47	
645.00	0.380	57.780	644.99	0.66	0.66	-0.95	3271262.05	1403286.59	40.4363318	-104.5254834	0.35	
739.00	0.250	59.080	738.99	0.93	0.93	-0.51	3271262.49	1403286.86	40.4363326	-104.5254818	0.14	
834.00	0.180	334.650	833.99	1.17	1.17	-0.40	3271262.60	1403287.10	40.4363332	-104.5254814	0.31	
928.00	0.220	61.090	927.99	1.39	1.39	-0.30	3271262.70	1403287.32	40.4363338	-104.5254810	0.29	
1023.00	0.150	17.270	1022.99	1.60	1.60	-0.10	3271262.90	1403287.53	40.4363344	-104.5254803	0.16	
1118.00	0.110	143.750	1117.99	1.64	1.64	-0.01	3271262.99	1403287.57	40.4363345	-104.5254800	0.25	
1213.00	0.280	227.990	1212.99	1.42	1.42	-0.13	3271262.87	1403287.35	40.4363339	-104.5254804	0.31	
1307.00	0.270	260.800	1306.99	1.23	1.23	-0.52	3271262.48	1403287.16	40.4363334	-104.5254818	0.17	
1402.00	0.360	251.750	1401.99	1.10	1.10	-1.03	3271261.97	1403287.03	40.4363330	-104.5254836	0.11	
1497.00	0.290	266.310	1496.99	0.99	0.99	-1.55	3271261.45	1403286.92	40.4363328	-104.5254855	0.11	
1592.00	0.490	206.210	1591.99	0.61	0.61	-1.97	3271261.03	1403286.54	40.4363317	-104.5254871	0.45	
1686.00	0.890	209.870	1685.98	-0.38	-0.38	-2.51	3271260.49	1403285.55	40.4363290	-104.5254890	0.43	
1781.00	1.500	204.160	1780.96	-2.15	-2.16	-3.39	3271259.61	1403283.77	40.4363242	-104.5254923	0.65	
1876.00	1.330	211.530	1875.93	-4.23	-4.23	-4.47	3271258.53	1403281.70	40.4363185	-104.5254962	0.26	
1926.00	1.070	200.480	1925.92	-5.16	-5.17	-4.94	3271258.06	1403280.76	40.4363160	-104.5254979	0.69	LAST GYRODATA SURVEY
1994.00	0.180	101.510	1993.91	-5.77	-5.78	-5.06	3271257.95	1403280.15	40.4363143	-104.5254984	1.64	FIRST BH MWD SURVEY
2088.00	0.780	169.250	2087.91	-6.43	-6.44	-4.79	3271258.21	1403279.49	40.4363125	-104.5254975	0.78	
2183.00	2.400	164.400	2182.87	-8.99	-8.99	-4.14	3271258.86	1403276.94	40.4363054	-104.5254952	1.71	
2277.00	5.640	165.730	2276.63	-15.36	-15.36	-2.47	3271260.53	1403270.57	40.4362879	-104.5254895	3.45	
2466.00	5.510	164.340	2464.73	-33.11	-33.10	2.27	3271265.27	1403252.83	40.4362391	-104.5254732	0.10	
2561.00	5.590	166.530	2559.29	-42.00	-41.99	4.58	3271267.58	1403243.94	40.4362146	-104.5254652	0.24	
2656.00	5.630	165.630	2653.83	-51.02	-51.01	6.81	3271269.81	1403234.92	40.4361898	-104.5254575	0.10	
2750.00	5.430	166.150	2747.39	-59.80	-59.79	9.02	3271272.02	1403226.14	40.4361656	-104.5254500	0.22	

REFERENCE WELLPATH IDENTIFICATION

Operator	NOBLE ENERGY, INC	Well	Reveille A35-783
Field	WELD COUNTY (NOBLE NAD 83 GRID)	API	0512350799
Facility	SEC.35-T06N-R64W	Wellbore	Reveille A35-783 AWB
Slot	SLOT#19 Reveille A35-783 (260'FSL & 360'FWL,SEC.35)		

WELLPATH DATA (179 stations)

MD [ft]	Inclination [°]	Azimuth [°]	TVD [ft]	Vert Sect [ft]	North [ft]	East [ft]	Grid East [US ft]	Grid North [US ft]	Latitude	Longitude	DLS [°/100ft]	Comments
2845.00	5.380	164.150	2841.97	-68.46	-68.44	11.32	3271274.32	1403217.49	40.4361418	-104.5254421	0.21	
2940.00	5.850	164.380	2936.52	-77.41	-77.39	13.84	3271276.84	1403208.55	40.4361172	-104.5254334	0.50	
3034.00	5.140	163.890	3030.08	-86.07	-86.05	16.29	3271279.29	1403199.89	40.4360933	-104.5254249	0.76	
3129.00	5.370	164.390	3124.68	-94.44	-94.42	18.67	3271281.67	1403191.52	40.4360703	-104.5254167	0.25	
3224.00	5.370	166.530	3219.27	-103.05	-103.02	20.90	3271283.90	1403182.91	40.4360466	-104.5254090	0.21	
3318.00	5.370	166.460	3312.86	-111.61	-111.58	22.96	3271285.96	1403174.36	40.4360231	-104.5254019	0.01	
3413.00	5.500	165.970	3407.43	-120.35	-120.31	25.10	3271288.10	1403165.62	40.4359990	-104.5253946	0.15	
3507.00	5.410	165.080	3501.00	-129.00	-128.97	27.33	3271290.33	1403156.97	40.4359752	-104.5253869	0.13	
3602.00	5.820	165.020	3595.55	-137.99	-137.95	29.73	3271292.73	1403147.99	40.4359505	-104.5253786	0.43	
3697.00	6.690	153.530	3689.98	-147.60	-147.55	33.44	3271296.44	1403138.38	40.4359240	-104.5253657	1.60	
3791.00	5.780	165.540	3783.43	-157.09	-157.04	37.07	3271300.07	1403128.90	40.4358979	-104.5253531	1.69	
3886.00	5.760	168.180	3877.95	-166.39	-166.34	39.24	3271302.24	1403119.60	40.4358723	-104.5253456	0.28	
3980.00	5.630	170.060	3971.49	-175.55	-175.50	41.00	3271304.00	1403110.44	40.4358471	-104.5253397	0.24	
4075.00	5.640	169.010	4066.03	-184.73	-184.67	42.69	3271305.69	1403101.27	40.4358219	-104.5253339	0.11	
4169.00	5.610	170.200	4159.57	-193.79	-193.73	44.36	3271307.36	1403092.21	40.4357969	-104.5253283	0.13	
4264.00	5.600	168.300	4254.12	-202.91	-202.84	46.09	3271309.09	1403083.09	40.4357719	-104.5253225	0.20	
4359.00	5.700	169.930	4348.66	-212.09	-212.03	47.85	3271310.85	1403073.91	40.4357466	-104.5253165	0.20	
4453.00	5.590	169.360	4442.20	-221.19	-221.12	49.51	3271312.51	1403064.81	40.4357216	-104.5253109	0.13	
4548.00	5.690	168.160	4536.74	-230.35	-230.28	51.33	3271314.33	1403055.66	40.4356964	-104.5253047	0.16	
4642.00	5.710	168.520	4630.28	-239.50	-239.42	53.22	3271316.22	1403046.52	40.4356712	-104.5252983	0.04	
4737.00	5.550	170.230	4724.82	-248.66	-248.58	54.94	3271317.94	1403037.36	40.4356461	-104.5252925	0.24	
4832.00	5.420	169.640	4819.38	-257.60	-257.52	56.53	3271319.53	1403028.42	40.4356215	-104.5252871	0.15	
4926.00	6.230	168.500	4912.90	-266.97	-266.89	58.34	3271321.34	1403019.05	40.4355957	-104.5252810	0.87	
5021.00	6.110	166.870	5007.35	-276.94	-276.86	60.52	3271323.52	1403009.08	40.4355683	-104.5252735	0.22	
5115.00	6.000	169.620	5100.82	-286.65	-286.57	62.54	3271325.54	1402999.37	40.4355416	-104.5252667	0.33	
5210.00	6.100	169.800	5195.29	-296.51	-296.42	64.33	3271327.33	1402989.52	40.4355145	-104.5252606	0.11	
5304.00	6.270	167.800	5288.75	-306.44	-306.35	66.30	3271329.30	1402979.59	40.4354872	-104.5252540	0.29	
5398.00	6.390	171.960	5382.18	-316.64	-316.55	68.11	3271331.11	1402969.39	40.4354591	-104.5252478	0.50	
5493.00	5.770	168.680	5476.64	-326.56	-326.47	69.79	3271332.79	1402959.48	40.4354318	-104.5252422	0.75	
5587.00	6.050	168.730	5570.14	-336.05	-335.96	71.69	3271334.68	1402949.99	40.4354057	-104.5252358	0.30	

REFERENCE WELLPATH IDENTIFICATION

Operator	NOBLE ENERGY, INC	Well	Reveille A35-783
Field	WELD COUNTY (NOBLE NAD 83 GRID)	API	0512350799
Facility	SEC.35-T06N-R64W	Wellbore	Reveille A35-783 AWB
Slot	SLOT#19 Reveille A35-783 (260'FSL & 360'FWL,SEC.35)		

WELLPATH DATA (179 stations)

MD [ft]	Inclination [°]	Azimuth [°]	TVD [ft]	Vert Sect [ft]	North [ft]	East [ft]	Grid East [US ft]	Grid North [US ft]	Latitude	Longitude	DLS [°/100ft]	Comments
5682.00	6.000	168.230	5664.62	-345.83	-345.73	73.68	3271336.68	1402940.22	40.4353789	-104.5252290	0.08	
5776.00	4.430	168.390	5758.22	-354.20	-354.09	75.41	3271338.41	1402931.85	40.4353558	-104.5252231	1.67	
5871.00	4.520	170.200	5852.93	-361.48	-361.38	76.79	3271339.78	1402924.57	40.4353358	-104.5252185	0.18	
5966.00	4.620	167.170	5947.63	-368.90	-368.80	78.27	3271341.27	1402917.15	40.4353154	-104.5252134	0.28	
6060.00	3.550	164.700	6041.39	-375.40	-375.29	79.88	3271342.88	1402910.65	40.4352975	-104.5252079	1.15	
6155.00	5.120	49.400	6136.24	-375.49	-375.37	83.88	3271346.88	1402910.57	40.4352972	-104.5251935	7.76	
6250.00	12.860	358.010	6230.12	-362.13	-362.01	86.74	3271349.74	1402923.93	40.4353338	-104.5251827	11.00	
6344.00	19.780	357.870	6320.28	-335.75	-335.63	85.79	3271348.78	1402950.31	40.4354062	-104.5251851	7.36	
6439.00	27.390	1.120	6407.28	-297.78	-297.66	85.62	3271348.61	1402988.28	40.4355104	-104.5251842	8.12	
6533.00	37.700	0.390	6486.42	-247.28	-247.17	86.24	3271349.23	1403038.77	40.4356490	-104.5251800	10.98	
6628.00	47.090	0.800	6556.50	-183.31	-183.19	86.92	3271349.92	1403102.75	40.4358246	-104.5251750	9.89	
6722.00	56.180	0.830	6614.78	-109.69	-109.57	87.97	3271350.97	1403176.36	40.4360266	-104.5251683	9.67	
6817.00	64.810	359.710	6661.52	-27.09	-26.97	88.32	3271351.32	1403258.96	40.4362533	-104.5251638	9.14	
6912.00	71.130	359.550	6697.14	60.93	61.04	87.75	3271350.75	1403346.97	40.4364949	-104.5251624	6.65	
7006.00	80.130	357.220	6720.45	151.85	151.97	85.15	3271348.15	1403437.89	40.4367445	-104.5251681	9.87	
7101.00	88.120	1.260	6730.17	246.25	246.36	83.92	3271346.92	1403532.28	40.4370037	-104.5251688	9.41	
7196.00	90.150	2.170	6731.60	341.19	341.30	86.77	3271349.76	1403627.22	40.4372642	-104.5251549	2.34	
7291.00	90.030	0.160	6731.45	436.16	436.28	88.70	3271351.69	1403722.19	40.4375248	-104.5251442	2.12	
7480.00	89.290	359.460	6732.57	625.15	625.27	88.07	3271351.07	1403911.18	40.4380435	-104.5251390	0.54	
7575.00	89.200	358.610	6733.83	720.13	720.25	86.47	3271349.47	1404006.15	40.4383043	-104.5251409	0.90	
7669.00	90.180	0.220	6734.33	814.12	814.24	85.51	3271348.51	1404100.14	40.4385623	-104.5251407	2.01	
7764.00	90.220	359.460	6734.00	909.12	909.24	85.25	3271348.24	1404195.13	40.4388230	-104.5251379	0.80	
7859.00	89.140	359.410	6734.53	1004.12	1004.23	84.31	3271347.31	1404290.12	40.4390838	-104.5251375	1.14	
7953.00	89.880	359.670	6735.34	1098.11	1098.22	83.56	3271346.55	1404384.11	40.4393418	-104.5251365	0.83	
8048.00	90.220	359.660	6735.25	1193.11	1193.22	83.00	3271346.00	1404479.10	40.4396025	-104.5251347	0.36	
8143.00	89.720	359.860	6735.30	1288.11	1288.22	82.60	3271345.60	1404574.10	40.4398633	-104.5251324	0.57	
8237.00	89.780	359.820	6735.71	1382.11	1382.22	82.34	3271345.34	1404668.09	40.4401213	-104.5251296	0.08	
8332.00	89.970	359.750	6735.92	1477.11	1477.22	81.98	3271344.98	1404763.09	40.4403821	-104.5251272	0.21	
8427.00	90.060	0.230	6735.90	1572.11	1572.22	81.97	3271344.96	1404858.08	40.4406428	-104.5251235	0.51	
8521.00	90.090	359.900	6735.77	1666.10	1666.22	82.07	3271345.07	1404952.08	40.4409008	-104.5251194	0.35	

REFERENCE WELLPATH IDENTIFICATION

Operator	NOBLE ENERGY, INC	Well	Reveille A35-783
Field	WELD COUNTY (NOBLE NAD 83 GRID)	API	0512350799
Facility	SEC.35-T06N-R64W	Wellbore	Reveille A35-783 AWB
Slot	SLOT#19 Reveille A35-783 (260'FSL & 360'FWL,SEC.35)		

WELLPATH DATA (179 stations)

MD [ft]	Inclination [°]	Azimuth [°]	TVD [ft]	Vert Sect [ft]	North [ft]	East [ft]	Grid East [US ft]	Grid North [US ft]	Latitude	Longitude	DLS [°/100ft]	Comments
8616.00	90.090	359.920	6735.62	1761.10	1761.22	81.92	3271344.92	1405047.08	40.4411616	-104.5251162	0.02	
8711.00	90.120	0.170	6735.45	1856.10	1856.22	82.00	3271344.99	1405142.07	40.4414223	-104.5251122	0.27	
8806.00	89.850	0.040	6735.47	1951.10	1951.22	82.17	3271345.17	1405237.07	40.4416831	-104.5251078	0.32	
8900.00	90.060	359.920	6735.55	2045.10	2045.22	82.14	3271345.14	1405331.06	40.4419411	-104.5251042	0.26	
8995.00	89.690	359.420	6735.76	2140.10	2140.21	81.59	3271344.59	1405426.06	40.4422018	-104.5251024	0.65	
9090.00	90.400	359.470	6735.68	2235.10	2235.21	80.67	3271343.67	1405521.05	40.4424626	-104.5251019	0.75	
9184.00	89.970	359.760	6735.38	2329.10	2329.21	80.04	3271343.04	1405615.04	40.4427206	-104.5251005	0.55	
9279.00	89.940	359.510	6735.45	2424.09	2424.20	79.44	3271342.43	1405710.04	40.4429813	-104.5250989	0.27	
9373.00	89.970	0.370	6735.53	2518.09	2518.20	79.34	3271342.33	1405804.03	40.4432394	-104.5250956	0.92	
9468.00	90.000	0.100	6735.55	2613.09	2613.20	79.73	3271342.72	1405899.03	40.4435001	-104.5250904	0.29	
9562.00	90.120	358.520	6735.45	2707.08	2707.19	78.59	3271341.59	1405993.01	40.4437581	-104.5250908	1.69	
9657.00	90.060	359.340	6735.30	2802.07	2802.17	76.82	3271339.82	1406087.99	40.4440188	-104.5250934	0.87	
9752.00	90.400	359.230	6734.92	2897.06	2897.17	75.64	3271338.63	1406182.98	40.4442796	-104.5250939	0.38	
9846.00	90.310	359.030	6734.34	2991.05	2991.15	74.21	3271337.20	1406276.96	40.4445376	-104.5250953	0.23	
9941.00	90.650	359.620	6733.54	3086.04	3086.14	73.09	3271336.09	1406371.95	40.4447984	-104.5250956	0.72	
10035.00	90.000	358.370	6733.01	3180.03	3180.12	71.44	3271334.44	1406465.93	40.4450564	-104.5250978	1.50	
10130.00	89.480	358.350	6733.44	3274.99	3275.08	68.72	3271331.72	1406560.88	40.4453171	-104.5251038	0.55	
10224.00	89.230	358.690	6734.50	3368.95	3369.05	66.29	3271329.29	1406654.84	40.4455751	-104.5251088	0.45	
10319.00	89.540	358.580	6735.52	3463.92	3464.01	64.03	3271327.03	1406749.81	40.4458358	-104.5251132	0.35	
10414.00	88.550	357.820	6737.10	3558.87	3558.95	61.05	3271324.04	1406844.74	40.4460965	-104.5251202	1.31	
10508.00	89.630	0.200	6738.60	3652.83	3652.92	59.42	3271322.42	1406938.70	40.4463544	-104.5251223	2.78	
10603.00	89.200	359.500	6739.57	3747.83	3747.91	59.18	3271322.17	1407033.69	40.4466152	-104.5251194	0.86	
10697.00	89.510	0.610	6740.62	3841.82	3841.90	59.27	3271322.26	1407127.68	40.4468731	-104.5251154	1.23	
10792.00	89.660	1.000	6741.31	3936.81	3936.89	60.60	3271323.60	1407222.66	40.4471338	-104.5251068	0.44	
10886.00	89.940	0.660	6741.64	4030.79	4030.88	61.96	3271324.96	1407316.65	40.4473917	-104.5250982	0.47	
10981.00	89.510	1.000	6742.10	4125.78	4125.87	63.34	3271326.34	1407411.64	40.4476524	-104.5250895	0.58	
11076.00	90.280	0.450	6742.27	4220.77	4220.86	64.54	3271327.54	1407506.62	40.4479131	-104.5250815	1.00	
11170.00	89.600	0.430	6742.37	4314.77	4314.86	65.26	3271328.26	1407600.62	40.4481711	-104.5250752	0.72	
11265.00	88.830	358.790	6743.67	4409.75	4409.84	64.62	3271327.61	1407695.60	40.4484318	-104.5250737	1.91	
11359.00	90.250	359.950	6744.42	4503.74	4503.83	63.58	3271326.58	1407789.58	40.4486898	-104.5250737	1.95	

REFERENCE WELLPATH IDENTIFICATION

Operator	NOBLE ENERGY, INC	Well	Reveille A35-783
Field	WELD COUNTY (NOBLE NAD 83 GRID)	API	0512350799
Facility	SEC.35-T06N-R64W	Wellbore	Reveille A35-783 AWB
Slot	SLOT#19 Reveille A35-783 (260'FSL & 360'FWL,SEC.35)		

WELLPATH DATA (179 stations)

MD [ft]	Inclination [°]	Azimuth [°]	TVD [ft]	Vert Sect [ft]	North [ft]	East [ft]	Grid East [US ft]	Grid North [US ft]	Latitude	Longitude	DLS [°/100ft]	Comments
11454.00	90.000	0.120	6744.22	4598.74	4598.83	63.64	3271326.64	1407884.58	40.4489505	-104.5250698	0.32	
11548.00	90.000	0.050	6744.22	4692.74	4692.83	63.78	3271326.78	1407978.57	40.4492085	-104.5250656	0.07	
11643.00	89.880	0.760	6744.32	4787.74	4787.83	64.45	3271327.45	1408073.57	40.4494693	-104.5250594	0.76	
11737.00	90.550	2.770	6743.96	4881.68	4881.78	67.35	3271330.34	1408167.51	40.4497270	-104.5250453	2.25	
11832.00	89.940	3.280	6743.56	4976.54	4976.64	72.36	3271335.36	1408262.37	40.4499873	-104.5250235	0.84	
11927.00	89.750	3.100	6743.81	5071.39	5071.49	77.65	3271340.64	1408357.22	40.4502474	-104.5250008	0.28	
12021.00	90.250	3.420	6743.81	5165.23	5165.34	82.99	3271345.99	1408451.07	40.4505049	-104.5249779	0.63	
12116.00	90.120	2.820	6743.51	5260.08	5260.20	88.16	3271351.16	1408545.92	40.4507651	-104.5249555	0.65	
12210.00	90.150	1.060	6743.29	5354.01	5354.14	91.34	3271354.34	1408639.86	40.4510228	-104.5249404	1.87	
12305.00	90.280	359.210	6742.93	5449.01	5449.14	91.57	3271354.56	1408734.85	40.4512835	-104.5249358	1.95	
12399.00	90.620	358.540	6742.19	5542.99	5543.12	89.72	3271352.72	1408828.82	40.4515415	-104.5249388	0.80	
12494.00	91.080	357.190	6740.78	5637.92	5638.04	86.18	3271349.18	1408923.74	40.4518022	-104.5249477	1.50	
12588.00	90.030	356.590	6739.87	5731.78	5731.89	81.08	3271344.08	1409017.59	40.4520599	-104.5249623	1.29	
12683.00	89.320	356.530	6740.41	5826.61	5826.72	75.38	3271338.38	1409112.42	40.4523204	-104.5249791	0.75	
12778.00	89.850	356.110	6741.10	5921.42	5921.52	69.29	3271332.28	1409207.21	40.4525808	-104.5249972	0.71	
12872.00	89.880	356.620	6741.32	6015.24	6015.33	63.33	3271326.32	1409301.02	40.4528384	-104.5250149	0.54	
12967.00	89.690	356.790	6741.68	6110.09	6110.17	57.87	3271320.86	1409395.86	40.4530989	-104.5250308	0.27	
13061.00	90.090	356.640	6741.86	6203.94	6204.02	52.48	3271315.48	1409489.70	40.4533567	-104.5250465	0.45	
13156.00	89.820	356.530	6741.93	6298.78	6298.85	46.82	3271309.82	1409584.53	40.4536171	-104.5250630	0.31	
13250.00	89.720	356.920	6742.31	6392.63	6392.69	41.45	3271304.45	1409678.37	40.4538748	-104.5250786	0.43	
13345.00	89.820	358.810	6742.69	6487.57	6487.62	37.91	3271300.91	1409773.29	40.4541355	-104.5250876	1.99	
13440.00	89.780	358.450	6743.02	6582.54	6582.60	35.64	3271298.64	1409868.26	40.4543962	-104.5250920	0.38	
13534.00	89.910	358.860	6743.28	6676.52	6676.57	33.43	3271296.43	1409962.23	40.4546542	-104.5250962	0.46	
13629.00	90.030	358.880	6743.33	6771.50	6771.55	31.56	3271294.56	1410057.21	40.4549150	-104.5250992	0.13	
13724.00	89.940	358.580	6743.35	6866.48	6866.53	29.46	3271292.45	1410152.18	40.4551757	-104.5251030	0.33	
13818.00	89.200	358.680	6744.06	6960.45	6960.50	27.21	3271290.21	1410246.15	40.4554337	-104.5251074	0.79	
13913.00	89.630	0.230	6745.03	7055.44	7055.48	26.30	3271289.30	1410341.13	40.4556945	-104.5251069	1.69	
14008.00	89.480	357.150	6745.76	7150.41	7150.44	24.13	3271287.13	1410436.09	40.4559552	-104.5251109	3.25	
14102.00	89.720	358.840	6746.42	7244.35	7244.38	20.84	3271283.84	1410530.02	40.4562131	-104.5251190	1.82	
14197.00	89.600	358.630	6746.98	7339.33	7339.36	18.75	3271281.75	1410624.99	40.4564738	-104.5251228	0.25	

REFERENCE WELLPATH IDENTIFICATION

Operator	NOBLE ENERGY, INC	Well	Reveille A35-783
Field	WELD COUNTY (NOBLE NAD 83 GRID)	API	0512350799
Facility	SEC.35-T06N-R64W	Wellbore	Reveille A35-783 AWB
Slot	SLOT#19 Reveille A35-783 (260'FSL & 360'FWL,SEC.35)		

WELLPATH DATA (179 stations) † = interpolated, ‡ = extrapolated station

MD [ft]	Inclination [°]	Azimuth [°]	TVD [ft]	Vert Sect [ft]	North [ft]	East [ft]	Grid East [US ft]	Grid North [US ft]	Latitude	Longitude	DLS [°/100ft]	Comments
14292.00	89.660	358.800	6747.60	7434.30	7434.33	16.62	3271279.62	1410719.96	40.4567346	-104.5251267	0.19	
14386.00	89.820	359.130	6748.02	7528.29	7528.31	14.92	3271277.92	1410813.94	40.4569926	-104.5251291	0.39	
14481.00	89.880	358.540	6748.27	7623.27	7623.29	12.99	3271275.99	1410908.92	40.4572533	-104.5251323	0.62	
14576.00	89.750	358.910	6748.58	7718.25	7718.27	10.87	3271273.87	1411003.89	40.4575141	-104.5251361	0.41	
14670.00	89.970	359.470	6748.81	7812.24	7812.26	9.54	3271272.54	1411097.88	40.4577721	-104.5251372	0.64	
14765.00	89.660	359.390	6749.12	7907.24	7907.25	8.60	3271271.60	1411192.87	40.4580329	-104.5251368	0.34	
14860.00	89.630	359.470	6749.71	8002.23	8002.25	7.65	3271270.65	1411287.86	40.4582936	-104.5251365	0.09	
14954.00	89.600	359.650	6750.34	8096.23	8096.24	6.93	3271269.93	1411381.85	40.4585516	-104.5251354	0.19	
15049.00	89.940	359.290	6750.72	8191.22	8191.24	6.05	3271269.05	1411476.84	40.4588124	-104.5251348	0.52	
15144.00	89.910	359.320	6750.84	8286.22	8286.23	4.90	3271267.90	1411571.83	40.4590731	-104.5251352	0.04	
15239.00	89.750	359.380	6751.12	8381.21	8381.22	3.82	3271266.82	1411666.82	40.4593339	-104.5251353	0.18	
15333.00	90.030	359.590	6751.30	8475.21	8475.22	2.98	3271265.98	1411760.81	40.4595919	-104.5251346	0.37	
15427.00	90.150	359.800	6751.16	8569.21	8569.22	2.48	3271265.48	1411854.81	40.4598499	-104.5251327	0.26	
15522.00	89.750	359.730	6751.24	8664.21	8664.22	2.09	3271265.09	1411949.80	40.4601107	-104.5251303	0.43	
15617.00	90.310	359.710	6751.19	8759.21	8759.22	1.62	3271264.62	1412044.80	40.4603714	-104.5251282	0.59	
15711.00	89.570	358.920	6751.29	8853.20	8853.21	0.50	3271263.50	1412138.78	40.4606295	-104.5251286	1.15	
15806.00	89.450	359.230	6752.10	8948.19	8948.19	-1.03	3271261.97	1412233.76	40.4608902	-104.5251303	0.35	
15901.00	89.600	359.080	6752.89	9043.17	9043.18	-2.43	3271260.57	1412328.75	40.4611510	-104.5251316	0.22	
15995.00	89.690	359.430	6753.47	9137.16	9137.17	-3.66	3271259.34	1412422.73	40.4614090	-104.5251323	0.38	
16090.00	89.690	359.820	6753.99	9232.16	9232.16	-4.28	3271258.72	1412517.73	40.4616697	-104.5251308	0.41	
16185.00	89.660	0.290	6754.52	9327.16	9327.16	-4.19	3271258.81	1412612.72	40.4619305	-104.5251267	0.50	
16279.00	89.910	1.180	6754.88	9421.15	9421.15	-2.98	3271260.02	1412706.71	40.4621884	-104.5251186	0.98	
16468.00	90.120	358.160	6754.83	9610.13	9610.13	-4.07	3271258.93	1412895.67	40.4627071	-104.5251151	1.60	
16563.00	89.940	358.050	6754.78	9705.08	9705.08	-7.21	3271255.79	1412990.62	40.4629678	-104.5251226	0.22	
16658.00	90.000	357.770	6754.83	9800.02	9800.01	-10.67	3271252.33	1413085.55	40.4632285	-104.5251313	0.30	
16752.00	89.750	357.630	6755.03	9893.95	9893.94	-14.45	3271248.55	1413179.47	40.4634864	-104.5251412	0.30	
16847.00	89.880	357.660	6755.34	9988.87	9988.86	-18.35	3271244.65	1413274.39	40.4637470	-104.5251515	0.14	
16930.00	89.910	357.930	6755.49	10071.81	10071.79	-21.54	3271241.46	1413357.32	40.4639748	-104.5251597	0.33	LAST BH MWD SURVEY
16954.00†	89.910	357.930	6755.53	10095.80	10095.78	-22.41	3271240.59	1413381.31	40.4640406	-104.5251618	0.00	PROJECTION TO BIT

HOLE & CASING SECTIONS - Ref Wellbore: Reveille A35-783 AWB Ref Wellpath: Reveille A35-783 AWP

String/Diameter	Start MD [ft]	End MD [ft]	Interval [ft]	Start TVD [ft]	End TVD [ft]	Start N/S [ft]	Start E/W [ft]	End N/S [ft]	End E/W [ft]
9.625in Casing Surface	30.00	1933.90	1903.90	30.00	1933.82	0.00	-0.05	-5.30	-4.98

TARGETS

Name	TVD [ft]	North [ft]	East [ft]	Grid East [US ft]	Grid North [US ft]	Latitude	Longitude	Shape
SEC.26-T06N-R64W	18.00	246.32	-4139.52	3267123.65	1403532.24	40.4371300	-104.5403400	polygon
2D Polygon: dimensions not calculated								
SEC.27-T06N-R64W	18.00	246.32	-4139.52	3267123.65	1403532.24	40.4371300	-104.5403400	polygon
2D Polygon: dimensions not calculated								
SEC.34-T06N-R64W	18.00	246.32	-4139.52	3267123.65	1403532.24	40.4371300	-104.5403400	polygon
2D Polygon: dimensions not calculated								
SEC.35-T06N-R64W	18.00	246.32	-4139.52	3267123.65	1403532.24	40.4371300	-104.5403400	polygon
2D Polygon: dimensions not calculated								
Reveille A35-783 TPZ REV-1 (460'FSL & 451'FWL,SEC.35)	6730.00	202.55	87.07	3271350.07	1403488.47	40.4368833	-104.5251592	point
Reveille A35-783 BHL REV-1 (200'FNL & 457'FWL,SEC.26)	6754.00	10096.49	-13.53	3271249.47	1413382.02	40.4640423	-104.5251299	point

REFERENCE WELLPATH IDENTIFICATION

Operator	NOBLE ENERGY, INC	Well	Reveille A35-783
Field	WELD COUNTY (NOBLE NAD 83 GRID)	API	0512350799
Facility	SEC.35-T06N-R64W	Wellbore	Reveille A35-783 AWB
Slot	SLOT#19 Reveille A35-783 (260'FSL & 360'FWL,SEC.35)		

WELLPATH COMPOSITION - Ref Wellbore: Reveille A35-783 AWB Ref Wellpath: Reveille A35-783 AWP

Start MD [ft]	End MD [ft]	Positional Uncertainty Model	Log Name/Comment	Wellbore	Survey Date
0.00	1926.00	Gyrodatta 2015 - GC+DROP+COND	Gyrodatta 2015 - GC+DROP+COND 13-1/2" <82 - 1926>	Reveille A35-783 AWB	1/4/2021
1926.00	16954.00	OWSG MWD rev2 (MS+IFR1) NOBLE	OWSG MWD rev2 (MS+IFR1) NOBLE 8-1/2" <1994 - 16930>	Reveille A35-783 AWB	1/15/2021

REFERENCE WELLPATH IDENTIFICATION

Operator	NOBLE ENERGY, INC	Well	Reveille A35-783
Field	WELD COUNTY (NOBLE NAD 83 GRID)	API	0512350799
Facility	SEC.35-T06N-R64W	Wellbore	Reveille A35-783 AWB
Slot	SLOT#19 Reveille A35-783 (260'FSL & 360'FWL,SEC.35)		

WELLPATH COMMENTS

MD [ft]	Inclination [°]	Azimuth [°]	TVD [ft]	Comment
82.00	0.480	267.670	82.00	FIRST GYRODATA SURVEY
1926.00	1.070	200.480	1925.92	LAST GYRODATA SURVEY
1994.00	0.180	101.510	1993.91	FIRST BH MWD SURVEY
16930.00	89.910	357.930	6755.49	LAST BH MWD SURVEY
16954.00	89.910	357.930	6755.53	PROJECTION TO BIT