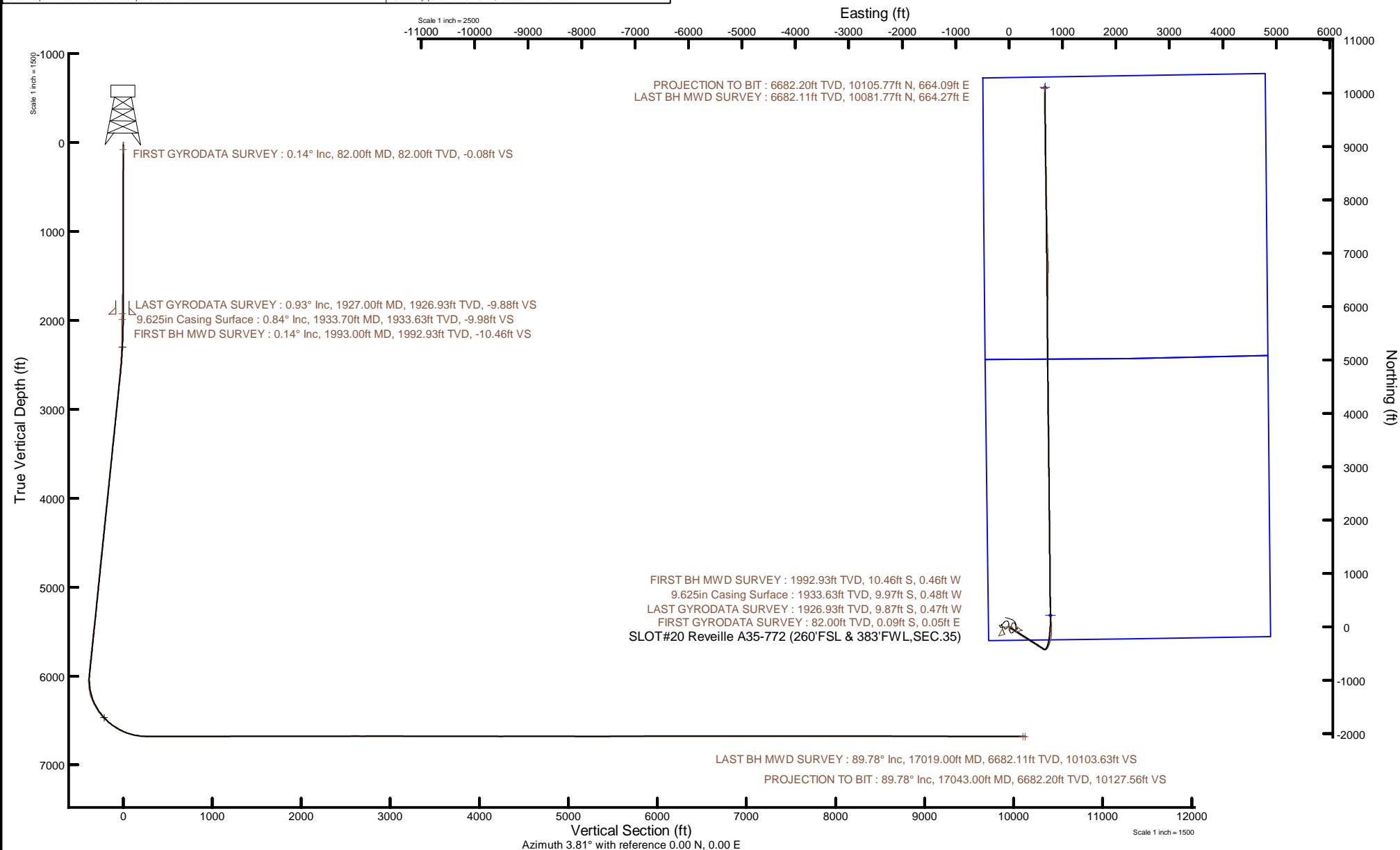


NOBLE ENERGY, INC

Location: COLORADO Slot: SLOT#20 Reveille A35-772 (260'FSL & 383'FWL,SEC.35)
Field: WELD COUNTY (NOBLE NAD 83 GRID) Well: Reveille A35-772
Facility: SEC.35-T06N-R64W Wellbore: Reveille A35-772 PWB



| | |
|---|--|
| Plot reference wellpath is Reveille A35-772 PWP Rev-A.0 | Grid System: NAD83 / Lambert Colorado SP, Northern Zone (501), US feet |
| True vertical depths are referenced to H&P 517 (30) (RT) | North Reference: Grid north |
| Reference wellpath measured depths are referenced to H&P 517 (30) (RT) | Scale: True distance |
| H&P 517 (30) (RT) to Mean Sea Level: 4678 feet | Coordinates are in feet referenced to Slot |
| Mean Sea Level to Mud line (At Slot: SLOT#20 Reveille A35-772 (260'FSL & 383'FWL,SEC.35)): 0 feet | Depths are in feet |
| Offset wellpath MDs are referenced to each path's default MD datum | Created by: painsetr on 2021-01-21; Database: WellArchitectDB |



REFERENCE WELLPATH IDENTIFICATION

| | | | |
|----------|---|----------|----------------------|
| Operator | NOBLE ENERGY, INC | Well | Reveille A35-772 |
| Field | WELD COUNTY (NOBLE NAD 83 GRID) | API | 0512350796 |
| Facility | SEC.35-T06N-R64W | Wellbore | Reveille A35-772 AWB |
| Slot | SLOT#20 Reveille A35-772 (260'FSL & 383'FWL,SEC.35) | | |

REPORT SETUP INFORMATION

| | | | |
|---------------------|---|------------------|-------------------------|
| Projection System | NAD83 / Lambert Colorado SP, Northern Zone (501), US feet | Software System | WellArchitect® 6.0 |
| North Reference | Grid | User | Painsetr |
| Scale | 0.999962 | Report Generated | 1/21/2021 at 7:10:29 AM |
| Convergence at slot | 0.63° East | Database | WellArchitectDB |

WELLPATH LOCATION

| | Local coordinates | | Grid coordinates | | Geographic coordinates | |
|-----------------------|-------------------|----------|------------------|-----------------|------------------------|---------------|
| | North[ft] | East[ft] | Easting[US ft] | Northing[US ft] | Latitude | Longitude |
| Slot Location | -1916.64 | -53.54 | 3271285.27 | 1403286.16 | 40.4363300° | -104.5254000° |
| Facility Reference Pt | | | 3271338.81 | 1405202.72 | 40.4415890° | -104.5251320° |
| Field Reference Pt | | | 3000000.00 | 4454105.15 | 48.7761986° | -105.5000000° |

WELLPATH DATUM

| | | | |
|--------------------------|--------------------|--|-------------------|
| Calculation method | Minimum curvature | H&P 517 (30') (RT) to Facility Vertical Datum | 4678.00ft |
| Horizontal Reference Pt | Slot | H&P 517 (30') (RT) to Mean Sea Level | 4678.00ft |
| Vertical Reference Pt | H&P 517 (30') (RT) | H&P 517 (30') (RT) to Mud Line at Slot (SLOT#20 Reveille A35-772 (260'FSL & 383'FWL,SEC.35)) | 4678.00ft |
| MD Reference Pt | H&P 517 (30') (RT) | Section Origin | N 0.00, E 0.00 ft |
| Field Vertical Reference | Mean Sea Level | Section Azimuth | 3.81° |

REFERENCE WELLPATH IDENTIFICATION

| | | | |
|----------|---|----------|----------------------|
| Operator | NOBLE ENERGY, INC | Well | Reveille A35-772 |
| Field | WELD COUNTY (NOBLE NAD 83 GRID) | API | 0512350796 |
| Facility | SEC.35-T06N-R64W | Wellbore | Reveille A35-772 AWB |
| Slot | SLOT#20 Reveille A35-772 (260'FSL & 383'FWL,SEC.35) | | |

WELLPATH DATA (180 stations)

| MD [ft] | Inclination [°] | Azimuth [°] | TVD [ft] | Vert Sect [ft] | North [ft] | East [ft] | Grid East [US ft] | Grid North [US ft] | Latitude | Longitude | DLS [°/100ft] | Comments |
|------------|--------------------|----------------|-------------|-------------------|---------------|--------------|----------------------|-----------------------|------------|--------------|------------------|-----------------------|
| 0.00 | 0.000 | 150.810 | 0.00 | 0.00 | 0.00 | 0.00 | 3271285.27 | 1403286.16 | 40.4363300 | -104.5254000 | 0.00 | |
| 82.00 | 0.140 | 150.810 | 82.00 | -0.08 | -0.09 | 0.05 | 3271285.32 | 1403286.07 | 40.4363297 | -104.5253998 | 0.17 | FIRST GYRODATA SURVEY |
| 175.00 | 0.200 | 43.200 | 175.00 | -0.05 | -0.07 | 0.22 | 3271285.49 | 1403286.09 | 40.4363298 | -104.5253992 | 0.30 | |
| 266.00 | 0.190 | 188.700 | 266.00 | -0.08 | -0.10 | 0.30 | 3271285.57 | 1403286.06 | 40.4363297 | -104.5253989 | 0.41 | |
| 361.00 | 0.230 | 206.020 | 361.00 | -0.41 | -0.43 | 0.19 | 3271285.46 | 1403285.73 | 40.4363288 | -104.5253993 | 0.08 | |
| 455.00 | 0.240 | 109.780 | 455.00 | -0.64 | -0.66 | 0.30 | 3271285.57 | 1403285.50 | 40.4363281 | -104.5253990 | 0.37 | |
| 550.00 | 0.280 | 158.260 | 550.00 | -0.91 | -0.95 | 0.57 | 3271285.84 | 1403285.21 | 40.4363273 | -104.5253980 | 0.23 | |
| 645.00 | 0.170 | 186.570 | 645.00 | -1.26 | -1.30 | 0.64 | 3271285.91 | 1403284.86 | 40.4363264 | -104.5253978 | 0.16 | |
| 739.00 | 0.070 | 233.110 | 739.00 | -1.43 | -1.48 | 0.58 | 3271285.85 | 1403284.68 | 40.4363259 | -104.5253980 | 0.14 | |
| 834.00 | 0.230 | 204.230 | 834.00 | -1.65 | -1.69 | 0.45 | 3271285.72 | 1403284.47 | 40.4363253 | -104.5253984 | 0.18 | |
| 928.00 | 0.400 | 223.070 | 927.99 | -2.08 | -2.10 | 0.15 | 3271285.42 | 1403284.06 | 40.4363242 | -104.5253995 | 0.21 | |
| 1023.00 | 0.250 | 229.880 | 1022.99 | -2.48 | -2.47 | -0.23 | 3271285.04 | 1403283.69 | 40.4363232 | -104.5254009 | 0.16 | |
| 1118.00 | 0.120 | 223.180 | 1117.99 | -2.70 | -2.68 | -0.46 | 3271284.81 | 1403283.48 | 40.4363226 | -104.5254018 | 0.14 | |
| 1213.00 | 0.330 | 252.230 | 1212.99 | -2.88 | -2.83 | -0.79 | 3271284.48 | 1403283.33 | 40.4363222 | -104.5254029 | 0.24 | |
| 1307.00 | 0.110 | 335.920 | 1306.99 | -2.90 | -2.84 | -1.08 | 3271284.19 | 1403283.32 | 40.4363222 | -104.5254040 | 0.36 | |
| 1402.00 | 0.370 | 169.440 | 1401.99 | -3.12 | -3.05 | -1.06 | 3271284.21 | 1403283.11 | 40.4363216 | -104.5254039 | 0.50 | |
| 1497.00 | 0.170 | 139.360 | 1496.99 | -3.52 | -3.46 | -0.92 | 3271284.35 | 1403282.70 | 40.4363205 | -104.5254034 | 0.25 | |
| 1592.00 | 0.510 | 141.170 | 1591.99 | -3.93 | -3.90 | -0.56 | 3271284.71 | 1403282.26 | 40.4363193 | -104.5254022 | 0.36 | |
| 1686.00 | 0.880 | 165.260 | 1685.98 | -4.92 | -4.92 | -0.11 | 3271285.16 | 1403281.24 | 40.4363165 | -104.5254006 | 0.49 | |
| 1781.00 | 1.390 | 182.200 | 1780.96 | -6.76 | -6.78 | 0.03 | 3271285.30 | 1403279.38 | 40.4363114 | -104.5254002 | 0.64 | |
| 1876.00 | 1.240 | 195.090 | 1875.94 | -8.92 | -8.92 | -0.28 | 3271284.99 | 1403277.24 | 40.4363055 | -104.5254014 | 0.35 | |
| 1927.00 | 0.930 | 185.470 | 1926.93 | -9.88 | -9.87 | -0.47 | 3271284.80 | 1403276.29 | 40.4363029 | -104.5254021 | 0.70 | LAST GYRODATA SURVEY |
| 1993.00 | 0.140 | 133.880 | 1992.93 | -10.46 | -10.46 | -0.46 | 3271284.81 | 1403275.70 | 40.4363013 | -104.5254021 | 1.29 | FIRST BH MWD SURVEY |
| 2088.00 | 0.180 | 109.640 | 2087.92 | -10.58 | -10.59 | -0.24 | 3271285.03 | 1403275.57 | 40.4363009 | -104.5254013 | 0.08 | |
| 2182.00 | 2.280 | 121.830 | 2181.90 | -11.50 | -11.62 | 1.49 | 3271286.76 | 1403274.54 | 40.4362980 | -104.5253951 | 2.24 | |
| 2277.00 | 4.020 | 122.500 | 2276.75 | -13.99 | -14.41 | 5.91 | 3271291.18 | 1403271.75 | 40.4362902 | -104.5253794 | 1.83 | |
| 2371.00 | 5.710 | 123.060 | 2370.41 | -17.85 | -18.73 | 12.60 | 3271297.87 | 1403267.43 | 40.4362782 | -104.5253555 | 1.80 | |
| 2466.00 | 8.240 | 123.190 | 2464.70 | -23.50 | -25.04 | 22.26 | 3271307.53 | 1403261.12 | 40.4362606 | -104.5253210 | 2.66 | |
| 2561.00 | 10.160 | 123.180 | 2558.47 | -30.96 | -33.35 | 34.98 | 3271320.24 | 1403252.81 | 40.4362374 | -104.5252757 | 2.02 | |
| 2655.00 | 11.570 | 121.910 | 2650.78 | -39.46 | -42.87 | 49.92 | 3271335.19 | 1403243.29 | 40.4362108 | -104.5252224 | 1.52 | |

REFERENCE WELLPATH IDENTIFICATION

| | | | |
|----------|---|----------|----------------------|
| Operator | NOBLE ENERGY, INC | Well | Reveille A35-772 |
| Field | WELD COUNTY (NOBLE NAD 83 GRID) | API | 0512350796 |
| Facility | SEC.35-T06N-R64W | Wellbore | Reveille A35-772 AWB |
| Slot | SLOT#20 Reveille A35-772 (260'FSL & 383'FWL,SEC.35) | | |

WELLPATH DATA (180 stations)

| MD [ft] | Inclination [°] | Azimuth [°] | TVD [ft] | Vert Sect [ft] | North [ft] | East [ft] | Grid East [US ft] | Grid North [US ft] | Latitude | Longitude | DLS [°/100ft] | Comments |
|---------|-----------------|-------------|----------|----------------|------------|-----------|-------------------|--------------------|------------|--------------|---------------|----------|
| 2750.00 | 11.990 | 122.560 | 2743.78 | -48.70 | -53.22 | 66.32 | 3271351.59 | 1403232.95 | 40.4361819 | -104.5251639 | 0.46 | |
| 2845.00 | 11.580 | 123.250 | 2836.78 | -58.13 | -63.76 | 82.61 | 3271367.88 | 1403222.41 | 40.4361525 | -104.5251058 | 0.46 | |
| 2939.00 | 11.840 | 122.750 | 2928.82 | -67.44 | -74.15 | 98.61 | 3271383.88 | 1403212.02 | 40.4361235 | -104.5250487 | 0.30 | |
| 3034.00 | 11.880 | 123.240 | 3021.80 | -76.96 | -84.78 | 114.99 | 3271400.25 | 1403201.39 | 40.4360938 | -104.5249903 | 0.11 | |
| 3128.00 | 11.660 | 125.180 | 3113.82 | -86.66 | -95.55 | 130.84 | 3271416.11 | 1403190.61 | 40.4360637 | -104.5249338 | 0.48 | |
| 3223.00 | 11.680 | 123.230 | 3206.86 | -96.38 | -106.35 | 146.73 | 3271432.00 | 1403179.81 | 40.4360336 | -104.5248771 | 0.42 | |
| 3318.00 | 11.790 | 123.320 | 3299.87 | -105.89 | -116.96 | 162.89 | 3271448.15 | 1403169.21 | 40.4360040 | -104.5248195 | 0.12 | |
| 3412.00 | 11.600 | 123.630 | 3391.92 | -115.32 | -127.46 | 178.78 | 3271464.04 | 1403158.70 | 40.4359747 | -104.5247628 | 0.21 | |
| 3507.00 | 11.790 | 122.650 | 3484.95 | -124.75 | -137.99 | 194.91 | 3271480.17 | 1403148.17 | 40.4359453 | -104.5247053 | 0.29 | |
| 3602.00 | 12.070 | 121.930 | 3577.90 | -134.12 | -148.48 | 211.51 | 3271496.77 | 1403137.69 | 40.4359160 | -104.5246461 | 0.33 | |
| 3696.00 | 12.070 | 122.080 | 3669.82 | -143.41 | -158.90 | 228.18 | 3271513.44 | 1403127.27 | 40.4358869 | -104.5245866 | 0.03 | |
| 3791.00 | 12.060 | 122.310 | 3762.72 | -152.85 | -169.48 | 244.98 | 3271530.24 | 1403116.69 | 40.4358574 | -104.5245267 | 0.05 | |
| 3980.00 | 11.760 | 123.180 | 3947.65 | -171.72 | -190.57 | 277.79 | 3271563.05 | 1403095.60 | 40.4357985 | -104.5244097 | 0.18 | |
| 4074.00 | 12.170 | 122.550 | 4039.61 | -181.18 | -201.14 | 294.16 | 3271579.41 | 1403085.02 | 40.4357690 | -104.5243513 | 0.46 | |
| 4169.00 | 12.060 | 122.830 | 4132.49 | -190.81 | -211.91 | 310.94 | 3271596.19 | 1403074.26 | 40.4357389 | -104.5242915 | 0.13 | |
| 4264.00 | 12.050 | 123.110 | 4225.40 | -200.48 | -222.71 | 327.58 | 3271612.84 | 1403063.46 | 40.4357088 | -104.5242321 | 0.06 | |
| 4358.00 | 12.350 | 122.190 | 4317.27 | -210.06 | -233.43 | 344.31 | 3271629.56 | 1403052.74 | 40.4356789 | -104.5241724 | 0.38 | |
| 4453.00 | 12.420 | 122.500 | 4410.06 | -219.80 | -244.33 | 361.52 | 3271646.78 | 1403041.84 | 40.4356484 | -104.5241110 | 0.10 | |
| 4547.00 | 12.020 | 123.150 | 4501.93 | -229.45 | -255.11 | 378.24 | 3271663.50 | 1403031.06 | 40.4356183 | -104.5240514 | 0.45 | |
| 4642.00 | 12.120 | 122.750 | 4594.83 | -239.12 | -265.92 | 394.91 | 3271680.17 | 1403020.26 | 40.4355882 | -104.5239919 | 0.14 | |
| 4737.00 | 12.190 | 122.870 | 4687.70 | -248.82 | -276.75 | 411.72 | 3271696.98 | 1403009.42 | 40.4355579 | -104.5239320 | 0.08 | |
| 4831.00 | 12.140 | 120.620 | 4779.59 | -258.10 | -287.17 | 428.57 | 3271713.82 | 1402999.00 | 40.4355288 | -104.5238719 | 0.51 | |
| 4926.00 | 12.420 | 120.500 | 4872.42 | -267.20 | -297.45 | 445.96 | 3271731.22 | 1402988.72 | 40.4355001 | -104.5238098 | 0.30 | |
| 5020.00 | 12.220 | 120.940 | 4964.25 | -276.28 | -307.69 | 463.21 | 3271748.46 | 1402978.48 | 40.4354714 | -104.5237483 | 0.24 | |
| 5209.00 | 12.040 | 120.230 | 5149.04 | -294.17 | -327.90 | 497.40 | 3271782.65 | 1402958.27 | 40.4354149 | -104.5236263 | 0.12 | |
| 5303.00 | 12.180 | 121.390 | 5240.94 | -303.13 | -338.00 | 514.33 | 3271799.58 | 1402948.17 | 40.4353867 | -104.5235658 | 0.30 | |
| 5398.00 | 12.350 | 121.590 | 5333.78 | -312.50 | -348.54 | 531.54 | 3271816.79 | 1402937.63 | 40.4353573 | -104.5235044 | 0.18 | |
| 5492.00 | 12.010 | 131.620 | 5425.67 | -323.19 | -360.31 | 547.42 | 3271832.66 | 1402925.87 | 40.4353245 | -104.5234479 | 2.28 | |
| 5587.00 | 12.220 | 123.790 | 5518.56 | -334.27 | -372.46 | 563.16 | 3271848.41 | 1402913.71 | 40.4352906 | -104.5233918 | 1.74 | |
| 5681.00 | 12.010 | 122.140 | 5610.47 | -343.89 | -383.20 | 579.71 | 3271864.96 | 1402902.98 | 40.4352607 | -104.5233328 | 0.43 | |

REFERENCE WELLPATH IDENTIFICATION

| | | | |
|----------|---|----------|----------------------|
| Operator | NOBLE ENERGY, INC | Well | Reveille A35-772 |
| Field | WELD COUNTY (NOBLE NAD 83 GRID) | API | 0512350796 |
| Facility | SEC.35-T06N-R64W | Wellbore | Reveille A35-772 AWB |
| Slot | SLOT#20 Reveille A35-772 (260'FSL & 383'FWL,SEC.35) | | |

WELLPATH DATA (180 stations)

| MD [ft] | Inclination [°] | Azimuth [°] | TVD [ft] | Vert Sect [ft] | North [ft] | East [ft] | Grid East [US ft] | Grid North [US ft] | Latitude | Longitude | DLS [°/100ft] | Comments |
|---------|-----------------|-------------|----------|----------------|------------|-----------|-------------------|--------------------|------------|--------------|---------------|----------|
| 5776.00 | 12.380 | 121.580 | 5703.32 | -353.32 | -393.79 | 596.76 | 3271882.00 | 1402892.38 | 40.4352311 | -104.5232720 | 0.41 | |
| 5871.00 | 12.180 | 121.490 | 5796.15 | -362.72 | -404.36 | 613.98 | 3271899.22 | 1402881.82 | 40.4352016 | -104.5232105 | 0.21 | |
| 5965.00 | 12.190 | 121.750 | 5888.03 | -371.98 | -414.76 | 630.87 | 3271916.12 | 1402871.42 | 40.4351725 | -104.5231503 | 0.06 | |
| 6060.00 | 12.560 | 119.080 | 5980.82 | -381.09 | -425.06 | 648.43 | 3271933.67 | 1402861.12 | 40.4351437 | -104.5230876 | 0.72 | |
| 6155.00 | 12.650 | 92.230 | 6073.61 | -385.22 | -430.49 | 667.87 | 3271953.11 | 1402855.69 | 40.4351282 | -104.5230180 | 6.11 | |
| 6249.00 | 17.280 | 57.680 | 6164.58 | -376.69 | -423.41 | 690.00 | 3271975.25 | 1402862.77 | 40.4351470 | -104.5229382 | 10.48 | |
| 6344.00 | 23.140 | 34.990 | 6253.82 | -352.34 | -400.52 | 712.69 | 3271997.93 | 1402885.66 | 40.4352091 | -104.5228558 | 10.20 | |
| 6438.00 | 30.870 | 27.090 | 6337.54 | -314.32 | -363.85 | 734.30 | 3272019.54 | 1402922.33 | 40.4353091 | -104.5227767 | 9.05 | |
| 6533.00 | 38.810 | 19.610 | 6415.48 | -263.18 | -314.00 | 755.43 | 3272040.67 | 1402972.17 | 40.4354453 | -104.5226988 | 9.48 | |
| 6627.00 | 45.230 | 13.390 | 6485.31 | -201.85 | -253.71 | 773.07 | 3272058.31 | 1403032.46 | 40.4356103 | -104.5226331 | 8.13 | |
| 6722.00 | 52.930 | 7.240 | 6547.52 | -130.62 | -183.16 | 785.68 | 3272070.92 | 1403103.01 | 40.4358035 | -104.5225850 | 9.46 | |
| 6817.00 | 60.700 | 2.300 | 6599.50 | -51.22 | -104.02 | 792.13 | 3272077.37 | 1403182.15 | 40.4360205 | -104.5225587 | 9.26 | |
| 6911.00 | 69.980 | 358.120 | 6638.69 | 33.91 | -18.71 | 792.33 | 3272077.57 | 1403267.45 | 40.4362547 | -104.5225546 | 10.66 | |
| 7006.00 | 77.620 | 355.900 | 6665.18 | 124.42 | 72.32 | 787.54 | 3272072.78 | 1403358.48 | 40.4365047 | -104.5225682 | 8.35 | |
| 7101.00 | 86.520 | 356.170 | 6678.28 | 217.56 | 166.09 | 781.05 | 3272066.28 | 1403452.25 | 40.4367622 | -104.5225878 | 9.37 | |
| 7195.00 | 90.030 | 355.680 | 6681.10 | 310.61 | 259.80 | 774.37 | 3272059.61 | 1403545.95 | 40.4370196 | -104.5226081 | 3.77 | |
| 7290.00 | 89.170 | 0.040 | 6681.77 | 405.08 | 354.71 | 770.82 | 3272056.06 | 1403640.85 | 40.4372802 | -104.5226171 | 4.68 | |
| 7385.00 | 89.320 | 357.950 | 6683.02 | 499.73 | 449.68 | 769.16 | 3272054.40 | 1403735.82 | 40.4375410 | -104.5226193 | 2.21 | |
| 7480.00 | 90.740 | 0.100 | 6682.97 | 594.39 | 544.66 | 767.54 | 3272052.78 | 1403830.79 | 40.4378017 | -104.5226214 | 2.71 | |
| 7574.00 | 89.910 | 359.760 | 6682.44 | 688.17 | 638.65 | 767.43 | 3272052.66 | 1403924.79 | 40.4380597 | -104.5226180 | 0.95 | |
| 7669.00 | 90.060 | 0.320 | 6682.46 | 782.97 | 733.65 | 767.49 | 3272052.73 | 1404019.78 | 40.4383204 | -104.5226140 | 0.61 | |
| 7764.00 | 90.430 | 359.070 | 6682.06 | 877.72 | 828.65 | 766.99 | 3272052.23 | 1404114.78 | 40.4385812 | -104.5226121 | 1.37 | |
| 7858.00 | 90.650 | 359.630 | 6681.17 | 971.43 | 922.64 | 765.92 | 3272051.16 | 1404208.76 | 40.4388392 | -104.5226122 | 0.64 | |
| 7953.00 | 90.310 | 359.560 | 6680.37 | 1066.17 | 1017.63 | 765.25 | 3272050.49 | 1404303.75 | 40.4391000 | -104.5226109 | 0.37 | |
| 8048.00 | 90.030 | 359.660 | 6680.09 | 1160.92 | 1112.63 | 764.60 | 3272049.84 | 1404398.74 | 40.4393607 | -104.5226094 | 0.31 | |
| 8142.00 | 90.280 | 359.840 | 6679.84 | 1254.68 | 1206.63 | 764.19 | 3272049.43 | 1404492.74 | 40.4396187 | -104.5226072 | 0.33 | |
| 8237.00 | 90.280 | 359.100 | 6679.37 | 1349.41 | 1301.62 | 763.31 | 3272048.55 | 1404587.73 | 40.4398795 | -104.5226066 | 0.78 | |
| 8331.00 | 90.250 | 359.010 | 6678.94 | 1443.08 | 1395.61 | 761.76 | 3272047.00 | 1404681.71 | 40.4401375 | -104.5226084 | 0.10 | |
| 8426.00 | 90.340 | 359.560 | 6678.45 | 1537.79 | 1490.60 | 760.58 | 3272045.82 | 1404776.70 | 40.4403983 | -104.5226089 | 0.59 | |
| 8521.00 | 90.180 | 359.720 | 6678.02 | 1632.53 | 1585.60 | 759.98 | 3272045.22 | 1404871.69 | 40.4406590 | -104.5226073 | 0.24 | |

REFERENCE WELLPATH IDENTIFICATION

| | | | |
|----------|---|----------|----------------------|
| Operator | NOBLE ENERGY, INC | Well | Reveille A35-772 |
| Field | WELD COUNTY (NOBLE NAD 83 GRID) | API | 0512350796 |
| Facility | SEC.35-T06N-R64W | Wellbore | Reveille A35-772 AWB |
| Slot | SLOT#20 Reveille A35-772 (260'FSL & 383'FWL,SEC.35) | | |

WELLPATH DATA (180 stations)

| MD [ft] | Inclination [°] | Azimuth [°] | TVD [ft] | Vert Sect [ft] | North [ft] | East [ft] | Grid East [US ft] | Grid North [US ft] | Latitude | Longitude | DLS [°/100ft] | Comments |
|----------|-----------------|-------------|----------|----------------|------------|-----------|-------------------|--------------------|------------|--------------|---------------|----------|
| 8616.00 | 90.340 | 359.610 | 6677.59 | 1727.29 | 1680.59 | 759.42 | 3272044.66 | 1404966.69 | 40.4409198 | -104.5226055 | 0.20 | |
| 8710.00 | 90.340 | 359.180 | 6677.03 | 1821.00 | 1774.59 | 758.43 | 3272043.67 | 1405060.68 | 40.4411778 | -104.5226054 | 0.46 | |
| 8805.00 | 89.880 | 359.520 | 6676.85 | 1915.72 | 1869.58 | 757.35 | 3272042.59 | 1405155.66 | 40.4414385 | -104.5226055 | 0.60 | |
| 8900.00 | 90.590 | 357.780 | 6676.46 | 2010.33 | 1964.55 | 755.12 | 3272040.36 | 1405250.63 | 40.4416993 | -104.5226098 | 1.98 | |
| 8995.00 | 90.150 | 359.650 | 6675.84 | 2104.95 | 2059.52 | 752.99 | 3272038.23 | 1405345.60 | 40.4419600 | -104.5226137 | 2.02 | |
| 9089.00 | 90.250 | 359.520 | 6675.52 | 2198.69 | 2153.51 | 752.30 | 3272037.54 | 1405439.59 | 40.4422180 | -104.5226124 | 0.17 | |
| 9184.00 | 89.690 | 359.680 | 6675.57 | 2293.44 | 2248.51 | 751.64 | 3272036.88 | 1405534.58 | 40.4424788 | -104.5226110 | 0.61 | |
| 9278.00 | 90.060 | 359.310 | 6675.77 | 2387.17 | 2342.51 | 750.81 | 3272036.05 | 1405628.57 | 40.4427368 | -104.5226103 | 0.56 | |
| 9373.00 | 90.430 | 358.920 | 6675.36 | 2481.85 | 2437.50 | 749.35 | 3272034.59 | 1405723.56 | 40.4429975 | -104.5226118 | 0.57 | |
| 9467.00 | 90.060 | 359.640 | 6674.96 | 2575.56 | 2531.49 | 748.16 | 3272033.40 | 1405817.55 | 40.4432556 | -104.5226123 | 0.86 | |
| 9562.00 | 89.820 | 359.490 | 6675.06 | 2670.29 | 2626.48 | 747.44 | 3272032.68 | 1405912.54 | 40.4435163 | -104.5226111 | 0.30 | |
| 9657.00 | 90.770 | 359.480 | 6674.57 | 2765.02 | 2721.48 | 746.59 | 3272031.83 | 1406007.53 | 40.4437771 | -104.5226104 | 1.00 | |
| 9751.00 | 90.180 | 359.470 | 6673.79 | 2858.75 | 2815.47 | 745.73 | 3272030.97 | 1406101.52 | 40.4440351 | -104.5226098 | 0.63 | |
| 9846.00 | 90.250 | 359.200 | 6673.44 | 2953.46 | 2910.46 | 744.63 | 3272029.87 | 1406196.51 | 40.4442958 | -104.5226100 | 0.29 | |
| 9940.00 | 89.630 | 359.740 | 6673.54 | 3047.19 | 3004.46 | 743.76 | 3272029.00 | 1406290.50 | 40.4445539 | -104.5226094 | 0.87 | |
| 10035.00 | 88.710 | 358.780 | 6674.91 | 3141.88 | 3099.44 | 742.53 | 3272027.77 | 1406385.47 | 40.4448146 | -104.5226100 | 1.40 | |
| 10130.00 | 90.000 | 359.220 | 6675.98 | 3236.54 | 3194.41 | 740.87 | 3272026.11 | 1406480.45 | 40.4450753 | -104.5226122 | 1.43 | |
| 10224.00 | 90.000 | 359.740 | 6675.98 | 3330.27 | 3288.41 | 740.02 | 3272025.26 | 1406574.44 | 40.4453333 | -104.5226116 | 0.55 | |
| 10319.00 | 88.950 | 359.710 | 6676.85 | 3425.02 | 3383.40 | 739.56 | 3272024.80 | 1406669.43 | 40.4455941 | -104.5226095 | 1.11 | |
| 10413.00 | 89.410 | 359.360 | 6678.20 | 3518.75 | 3477.39 | 738.80 | 3272024.04 | 1406763.41 | 40.4458521 | -104.5226085 | 0.61 | |
| 10508.00 | 90.060 | 358.760 | 6678.64 | 3613.43 | 3572.38 | 737.24 | 3272022.48 | 1406858.39 | 40.4461128 | -104.5226103 | 0.93 | |
| 10603.00 | 90.430 | 359.440 | 6678.23 | 3708.10 | 3667.36 | 735.75 | 3272020.99 | 1406953.38 | 40.4463736 | -104.5226119 | 0.81 | |
| 10697.00 | 90.550 | 359.960 | 6677.43 | 3801.86 | 3761.36 | 735.26 | 3272020.50 | 1407047.37 | 40.4466316 | -104.5226100 | 0.57 | |
| 10791.00 | 90.830 | 358.820 | 6676.29 | 3895.57 | 3855.34 | 734.26 | 3272019.50 | 1407141.35 | 40.4468896 | -104.5226098 | 1.25 | |
| 10886.00 | 90.340 | 356.430 | 6675.32 | 3990.01 | 3950.25 | 730.32 | 3272015.56 | 1407236.25 | 40.4471502 | -104.5226202 | 2.57 | |
| 10981.00 | 87.660 | 357.450 | 6676.98 | 4084.30 | 4045.09 | 725.25 | 3272010.49 | 1407331.09 | 40.4474107 | -104.5226347 | 3.02 | |
| 11075.00 | 89.080 | 0.730 | 6679.66 | 4177.93 | 4139.03 | 723.76 | 3272009.00 | 1407425.02 | 40.4476685 | -104.5226363 | 3.80 | |
| 11170.00 | 90.520 | 1.340 | 6679.99 | 4272.82 | 4234.01 | 725.47 | 3272010.72 | 1407520.00 | 40.4479292 | -104.5226264 | 1.65 | |
| 11265.00 | 92.130 | 0.500 | 6677.79 | 4367.67 | 4328.96 | 727.00 | 3272012.24 | 1407614.95 | 40.4481898 | -104.5226171 | 1.91 | |
| 11359.00 | 89.290 | 358.140 | 6676.63 | 4461.36 | 4422.93 | 725.88 | 3272011.12 | 1407708.92 | 40.4484477 | -104.5226174 | 3.93 | |

REFERENCE WELLPATH IDENTIFICATION

| | | | |
|----------|---|----------|----------------------|
| Operator | NOBLE ENERGY, INC | Well | Reveille A35-772 |
| Field | WELD COUNTY (NOBLE NAD 83 GRID) | API | 0512350796 |
| Facility | SEC.35-T06N-R64W | Wellbore | Reveille A35-772 AWB |
| Slot | SLOT#20 Reveille A35-772 (260'FSL & 383'FWL,SEC.35) | | |

WELLPATH DATA (180 stations)

| MD [ft] | Inclination [°] | Azimuth [°] | TVD [ft] | Vert Sect [ft] | North [ft] | East [ft] | Grid East [US ft] | Grid North [US ft] | Latitude | Longitude | DLS [°/100ft] | Comments |
|----------|-----------------|-------------|----------|----------------|------------|-----------|-------------------|--------------------|------------|--------------|---------------|----------|
| 11453.00 | 89.910 | 0.930 | 6677.28 | 4555.08 | 4516.92 | 725.12 | 3272010.36 | 1407802.90 | 40.4487057 | -104.5226165 | 3.04 | |
| 11548.00 | 89.600 | 359.350 | 6677.69 | 4649.88 | 4611.92 | 725.35 | 3272010.59 | 1407897.89 | 40.4489664 | -104.5226119 | 1.69 | |
| 11643.00 | 89.480 | 358.630 | 6678.45 | 4744.55 | 4706.90 | 723.68 | 3272008.92 | 1407992.87 | 40.4492272 | -104.5226141 | 0.77 | |
| 11737.00 | 89.350 | 359.530 | 6679.41 | 4838.22 | 4800.88 | 722.17 | 3272007.41 | 1408086.85 | 40.4494852 | -104.5226158 | 0.97 | |
| 11832.00 | 90.250 | 358.290 | 6679.74 | 4932.87 | 4895.86 | 720.36 | 3272005.60 | 1408181.82 | 40.4497459 | -104.5226185 | 1.61 | |
| 11926.00 | 89.850 | 359.800 | 6679.66 | 5026.54 | 4989.84 | 718.80 | 3272004.04 | 1408275.80 | 40.4500039 | -104.5226204 | 1.66 | |
| 12021.00 | 88.920 | 358.600 | 6680.68 | 5121.23 | 5084.82 | 717.47 | 3272002.71 | 1408370.78 | 40.4502647 | -104.5226215 | 1.60 | |
| 12115.00 | 88.890 | 0.450 | 6682.48 | 5214.94 | 5178.80 | 716.69 | 3272001.93 | 1408464.75 | 40.4505226 | -104.5226205 | 1.97 | |
| 12210.00 | 90.460 | 359.300 | 6683.02 | 5309.72 | 5273.79 | 716.48 | 3272001.72 | 1408559.74 | 40.4507834 | -104.5226175 | 2.05 | |
| 12304.00 | 91.230 | 0.820 | 6681.63 | 5403.50 | 5367.78 | 716.58 | 3272001.82 | 1408653.73 | 40.4510413 | -104.5226134 | 1.81 | |
| 12399.00 | 91.390 | 0.060 | 6679.46 | 5498.31 | 5462.75 | 717.31 | 3272002.55 | 1408748.69 | 40.4513020 | -104.5226071 | 0.82 | |
| 12493.00 | 90.550 | 0.470 | 6677.87 | 5592.12 | 5556.74 | 717.75 | 3272002.99 | 1408842.67 | 40.4515599 | -104.5226018 | 0.99 | |
| 12588.00 | 90.860 | 0.170 | 6676.70 | 5686.93 | 5651.73 | 718.28 | 3272003.52 | 1408937.66 | 40.4518206 | -104.5225961 | 0.45 | |
| 12683.00 | 90.220 | 359.990 | 6675.80 | 5781.73 | 5746.72 | 718.41 | 3272003.65 | 1409032.65 | 40.4520813 | -104.5225919 | 0.70 | |
| 12777.00 | 91.260 | 359.980 | 6674.59 | 5875.51 | 5840.71 | 718.38 | 3272003.63 | 1409126.64 | 40.4523393 | -104.5225882 | 1.11 | |
| 12872.00 | 90.280 | 0.470 | 6673.31 | 5970.32 | 5935.70 | 718.76 | 3272004.00 | 1409221.63 | 40.4526000 | -104.5225831 | 1.15 | |
| 12966.00 | 89.720 | 0.270 | 6673.31 | 6064.15 | 6029.70 | 719.36 | 3272004.61 | 1409315.62 | 40.4528580 | -104.5225772 | 0.63 | |
| 13061.00 | 89.910 | 1.130 | 6673.62 | 6159.01 | 6124.69 | 720.52 | 3272005.77 | 1409410.61 | 40.4531187 | -104.5225693 | 0.93 | |
| 13155.00 | 90.770 | 0.700 | 6673.06 | 6252.88 | 6218.68 | 722.03 | 3272007.27 | 1409504.59 | 40.4533766 | -104.5225602 | 1.02 | |
| 13250.00 | 90.460 | 0.540 | 6672.04 | 6347.73 | 6313.67 | 723.05 | 3272008.30 | 1409599.57 | 40.4536373 | -104.5225527 | 0.37 | |
| 13345.00 | 89.780 | 1.000 | 6671.84 | 6442.60 | 6408.66 | 724.33 | 3272009.57 | 1409694.56 | 40.4538980 | -104.5225444 | 0.86 | |
| 13440.00 | 89.690 | 1.480 | 6672.28 | 6537.50 | 6503.63 | 726.39 | 3272011.63 | 1409789.53 | 40.4541586 | -104.5225332 | 0.51 | |
| 13534.00 | 90.150 | 1.170 | 6672.41 | 6631.41 | 6597.61 | 728.56 | 3272013.80 | 1409883.50 | 40.4544165 | -104.5225217 | 0.59 | |
| 13629.00 | 89.260 | 1.170 | 6672.90 | 6726.31 | 6692.59 | 730.50 | 3272015.74 | 1409978.48 | 40.4546771 | -104.5225110 | 0.94 | |
| 13723.00 | 90.280 | 358.990 | 6673.28 | 6820.10 | 6786.58 | 730.63 | 3272015.87 | 1410072.47 | 40.4549351 | -104.5225068 | 2.56 | |
| 13818.00 | 89.630 | 357.740 | 6673.35 | 6914.67 | 6881.54 | 727.92 | 3272013.16 | 1410167.42 | 40.4551958 | -104.5225127 | 1.48 | |
| 13913.00 | 90.250 | 358.140 | 6673.45 | 7009.17 | 6976.47 | 724.51 | 3272009.75 | 1410262.36 | 40.4554565 | -104.5225213 | 0.78 | |
| 14008.00 | 89.780 | 358.490 | 6673.43 | 7103.74 | 7071.43 | 721.71 | 3272006.95 | 1410357.31 | 40.4557172 | -104.5225275 | 0.62 | |
| 14102.00 | 89.880 | 357.840 | 6673.71 | 7197.28 | 7165.38 | 718.70 | 3272003.94 | 1410451.26 | 40.4559751 | -104.5225346 | 0.70 | |
| 14291.00 | 90.090 | 358.680 | 6673.76 | 7385.40 | 7354.29 | 712.96 | 3271998.20 | 1410640.16 | 40.4564938 | -104.5225478 | 0.46 | |

REFERENCE WELLPATH IDENTIFICATION

| | | | |
|----------|---|----------|----------------------|
| Operator | NOBLE ENERGY, INC | Well | Reveille A35-772 |
| Field | WELD COUNTY (NOBLE NAD 83 GRID) | API | 0512350796 |
| Facility | SEC.35-T06N-R64W | Wellbore | Reveille A35-772 AWB |
| Slot | SLOT#20 Reveille A35-772 (260'FSL & 383'FWL,SEC.35) | | |

WELLPATH DATA (180 stations) † = interpolated, ‡ = extrapolated station

| MD [ft] | Inclination [°] | Azimuth [°] | TVD [ft] | Vert Sect [ft] | North [ft] | East [ft] | Grid East [US ft] | Grid North [US ft] | Latitude | Longitude | DLS [°/100ft] | Comments |
|-----------|-----------------|-------------|----------|----------------|------------|-----------|-------------------|--------------------|------------|--------------|---------------|--------------------|
| 14386.00 | 90.000 | 358.380 | 6673.68 | 7479.99 | 7449.26 | 710.53 | 3271995.77 | 1410735.13 | 40.4567546 | -104.5225528 | 0.33 | |
| 14481.00 | 89.880 | 358.610 | 6673.78 | 7574.59 | 7544.23 | 708.03 | 3271993.27 | 1410830.09 | 40.4570153 | -104.5225580 | 0.27 | |
| 14575.00 | 90.340 | 358.610 | 6673.60 | 7668.20 | 7638.20 | 705.75 | 3271990.99 | 1410924.06 | 40.4572733 | -104.5225624 | 0.49 | |
| 14670.00 | 90.090 | 358.330 | 6673.24 | 7762.79 | 7733.17 | 703.21 | 3271988.46 | 1411019.02 | 40.4575340 | -104.5225678 | 0.40 | |
| 14765.00 | 90.120 | 358.940 | 6673.07 | 7857.40 | 7828.14 | 700.95 | 3271986.19 | 1411113.99 | 40.4577947 | -104.5225722 | 0.64 | |
| 14859.00 | 89.850 | 358.560 | 6673.10 | 7951.03 | 7922.12 | 698.90 | 3271984.14 | 1411207.96 | 40.4580528 | -104.5225758 | 0.50 | |
| 14954.00 | 90.310 | 358.990 | 6672.96 | 8045.67 | 8017.09 | 696.87 | 3271982.11 | 1411302.93 | 40.4583135 | -104.5225793 | 0.66 | |
| 15049.00 | 89.630 | 358.730 | 6673.01 | 8140.31 | 8112.08 | 694.98 | 3271980.22 | 1411397.91 | 40.4585742 | -104.5225824 | 0.77 | |
| 15143.00 | 90.430 | 358.970 | 6672.96 | 8233.96 | 8206.06 | 693.09 | 3271978.34 | 1411491.89 | 40.4588323 | -104.5225854 | 0.89 | |
| 15238.00 | 89.720 | 358.380 | 6672.84 | 8328.58 | 8301.03 | 690.90 | 3271976.14 | 1411586.86 | 40.4590930 | -104.5225896 | 0.97 | |
| 15333.00 | 89.880 | 359.310 | 6673.17 | 8423.22 | 8396.01 | 688.98 | 3271974.22 | 1411681.83 | 40.4593537 | -104.5225927 | 0.99 | |
| 15427.00 | 89.320 | 358.300 | 6673.83 | 8516.86 | 8489.98 | 687.02 | 3271972.26 | 1411775.80 | 40.4596117 | -104.5225960 | 1.23 | |
| 15522.00 | 89.540 | 358.570 | 6674.77 | 8611.44 | 8584.94 | 684.43 | 3271969.67 | 1411870.76 | 40.4598724 | -104.5226016 | 0.37 | |
| 15616.00 | 89.660 | 358.810 | 6675.43 | 8705.06 | 8678.92 | 682.28 | 3271967.52 | 1411964.73 | 40.4601304 | -104.5226056 | 0.29 | |
| 15711.00 | 89.600 | 358.890 | 6676.04 | 8799.71 | 8773.90 | 680.37 | 3271965.61 | 1412059.71 | 40.4603912 | -104.5226086 | 0.11 | |
| 15805.00 | 89.450 | 359.120 | 6676.82 | 8893.37 | 8867.88 | 678.74 | 3271963.98 | 1412153.68 | 40.4606492 | -104.5226108 | 0.29 | |
| 15900.00 | 89.480 | 359.420 | 6677.71 | 8988.07 | 8962.87 | 677.53 | 3271962.77 | 1412248.67 | 40.4609099 | -104.5226114 | 0.32 | |
| 15995.00 | 89.480 | 359.300 | 6678.57 | 9082.78 | 9057.86 | 676.47 | 3271961.71 | 1412343.65 | 40.4611707 | -104.5226114 | 0.13 | |
| 16089.00 | 89.420 | 359.450 | 6679.47 | 9176.50 | 9151.85 | 675.44 | 3271960.69 | 1412437.64 | 40.4614287 | -104.5226114 | 0.17 | |
| 16184.00 | 89.910 | 359.110 | 6680.03 | 9271.20 | 9246.84 | 674.25 | 3271959.49 | 1412532.63 | 40.4616895 | -104.5226119 | 0.63 | |
| 16279.00 | 89.820 | 359.680 | 6680.25 | 9365.92 | 9341.83 | 673.25 | 3271958.49 | 1412627.62 | 40.4619502 | -104.5226118 | 0.61 | |
| 16373.00 | 89.850 | 359.470 | 6680.52 | 9459.66 | 9435.83 | 672.55 | 3271957.79 | 1412721.61 | 40.4622082 | -104.5226105 | 0.23 | |
| 16468.00 | 89.910 | 359.370 | 6680.72 | 9554.38 | 9530.82 | 671.59 | 3271956.83 | 1412816.60 | 40.4624690 | -104.5226102 | 0.12 | |
| 16563.00 | 89.880 | 359.240 | 6680.90 | 9649.09 | 9625.82 | 670.43 | 3271955.68 | 1412911.59 | 40.4627298 | -104.5226106 | 0.14 | |
| 16657.00 | 89.750 | 359.220 | 6681.20 | 9742.79 | 9719.81 | 669.17 | 3271954.41 | 1413005.58 | 40.4629878 | -104.5226114 | 0.14 | |
| 16752.00 | 89.970 | 359.310 | 6681.43 | 9837.49 | 9814.80 | 667.95 | 3271953.20 | 1413100.57 | 40.4632485 | -104.5226120 | 0.25 | |
| 16846.00 | 89.720 | 358.780 | 6681.69 | 9931.16 | 9908.78 | 666.39 | 3271951.63 | 1413194.55 | 40.4635065 | -104.5226139 | 0.62 | |
| 16941.00 | 89.970 | 359.470 | 6681.94 | 10025.85 | 10003.77 | 664.94 | 3271950.18 | 1413289.53 | 40.4637673 | -104.5226154 | 0.77 | |
| 17019.00 | 89.780 | 359.560 | 6682.11 | 10103.63 | 10081.77 | 664.27 | 3271949.52 | 1413367.53 | 40.4639814 | -104.5226147 | 0.27 | LAST BH MWD SURVEY |
| 17043.00† | 89.780 | 359.560 | 6682.20 | 10127.56 | 10105.77 | 664.09 | 3271949.33 | 1413391.53 | 40.4640473 | -104.5226144 | 0.00 | PROJECTION TO BIT |

HOLE & CASING SECTIONS - Ref Wellbore: Reveille A35-772 AWB Ref Wellpath: Reveille A35-772 AWP

| String/Diameter | Start MD [ft] | End MD [ft] | Interval [ft] | Start TVD [ft] | End TVD [ft] | Start N/S [ft] | Start E/W [ft] | End N/S [ft] | End E/W [ft] |
|------------------------|---------------|-------------|---------------|----------------|--------------|----------------|----------------|--------------|--------------|
| 9.625in Casing Surface | 30.00 | 1933.70 | 1903.70 | 30.00 | 1933.63 | -0.01 | 0.01 | -9.97 | -0.48 |

TARGETS

| Name | TVD [ft] | North [ft] | East [ft] | Grid East [US ft] | Grid North [US ft] | Latitude | Longitude | Shape |
|--|----------|------------|-----------|-------------------|--------------------|------------|--------------|---------|
| SEC.26-T06N-R64W | 17.00 | 246.09 | -4161.79 | 3267123.65 | 1403532.24 | 40.4371300 | -104.5403400 | polygon |
| 2D Polygon: dimensions not calculated | | | | | | | | |
| SEC.27-T06N-R64W | 17.00 | 246.09 | -4161.79 | 3267123.65 | 1403532.24 | 40.4371300 | -104.5403400 | polygon |
| 2D Polygon: dimensions not calculated | | | | | | | | |
| SEC.34-T06N-R64W | 17.00 | 246.09 | -4161.79 | 3267123.65 | 1403532.24 | 40.4371300 | -104.5403400 | polygon |
| 2D Polygon: dimensions not calculated | | | | | | | | |
| SEC.35-T06N-R64W | 17.00 | 246.09 | -4161.79 | 3267123.65 | 1403532.24 | 40.4371300 | -104.5403400 | polygon |
| 2D Polygon: dimensions not calculated | | | | | | | | |
| Reveille A35-772 BHL REV-1 (200'FNL & 1165'FWL,SEC.26) | 6678.00 | 10106.70 | 672.17 | 3271957.42 | 1413392.45 | 40.4640496 | -104.5225853 | point |
| Reveille A35-772 TPZ REV-1 (460'FSL & 1161'FWL,SEC.35) | 6678.00 | 212.47 | 774.40 | 3272059.64 | 1403498.62 | 40.4368897 | -104.5226099 | point |

REFERENCE WELLPATH IDENTIFICATION

| | | | |
|----------|---|----------|----------------------|
| Operator | NOBLE ENERGY, INC | Well | Reveille A35-772 |
| Field | WELD COUNTY (NOBLE NAD 83 GRID) | API | 0512350796 |
| Facility | SEC.35-T06N-R64W | Wellbore | Reveille A35-772 AWB |
| Slot | SLOT#20 Reveille A35-772 (260'FSL & 383'FWL,SEC.35) | | |

WELLPATH COMPOSITION - Ref Wellbore: Reveille A35-772 AWB Ref Wellpath: Reveille A35-772 AWP

| Start MD [ft] | End MD [ft] | Positional Uncertainty Model | Log Name/Comment | Wellbore | Survey Date |
|---------------|-------------|-------------------------------|---|----------------------|-------------|
| 0.00 | 1927.00 | Gyrodatta 2015 - GC+DROP+COND | Gyrodatta 2015 - GC+DROP+COND 13-1/2" <82 - 1927> | Reveille A35-772 AWB | 1/4/2021 |
| 1927.00 | 17043.00 | OWSG MWD rev2 (MS+IFR1) NOBLE | OWSG MWD rev2 (MS+IFR1) NOBLE 8-1/2" <1993 - 17019> | Reveille A35-772 AWB | 1/19/2021 |

REFERENCE WELLPATH IDENTIFICATION

| | | | |
|----------|---|----------|----------------------|
| Operator | NOBLE ENERGY, INC | Well | Reveille A35-772 |
| Field | WELD COUNTY (NOBLE NAD 83 GRID) | API | 0512350796 |
| Facility | SEC.35-T06N-R64W | Wellbore | Reveille A35-772 AWB |
| Slot | SLOT#20 Reveille A35-772 (260'FSL & 383'FWL,SEC.35) | | |

WELLPATH COMMENTS

| MD [ft] | Inclination [°] | Azimuth [°] | TVD [ft] | Comment |
|------------|--------------------|----------------|-------------|-----------------------|
| 82.00 | 0.140 | 150.810 | 82.00 | FIRST GYRODATA SURVEY |
| 1927.00 | 0.930 | 185.470 | 1926.93 | LAST GYRODATA SURVEY |
| 1993.00 | 0.140 | 133.880 | 1992.93 | FIRST BH MWD SURVEY |
| 17019.00 | 89.780 | 359.560 | 6682.11 | LAST BH MWD SURVEY |
| 17043.00 | 89.780 | 359.560 | 6682.20 | PROJECTION TO BIT |