

Sec 20, T6S, R96W
GM 43-19
Q201072 & RM-200854
Plan 3

Company Name: Terra Energy Partners, LLP
GM 43-19
Garfield County, CO
Rig: KB=24' @ 5771.50usft (H&P #318)
Created by: Chase Chambers
Date: 2:33, January 19 2021

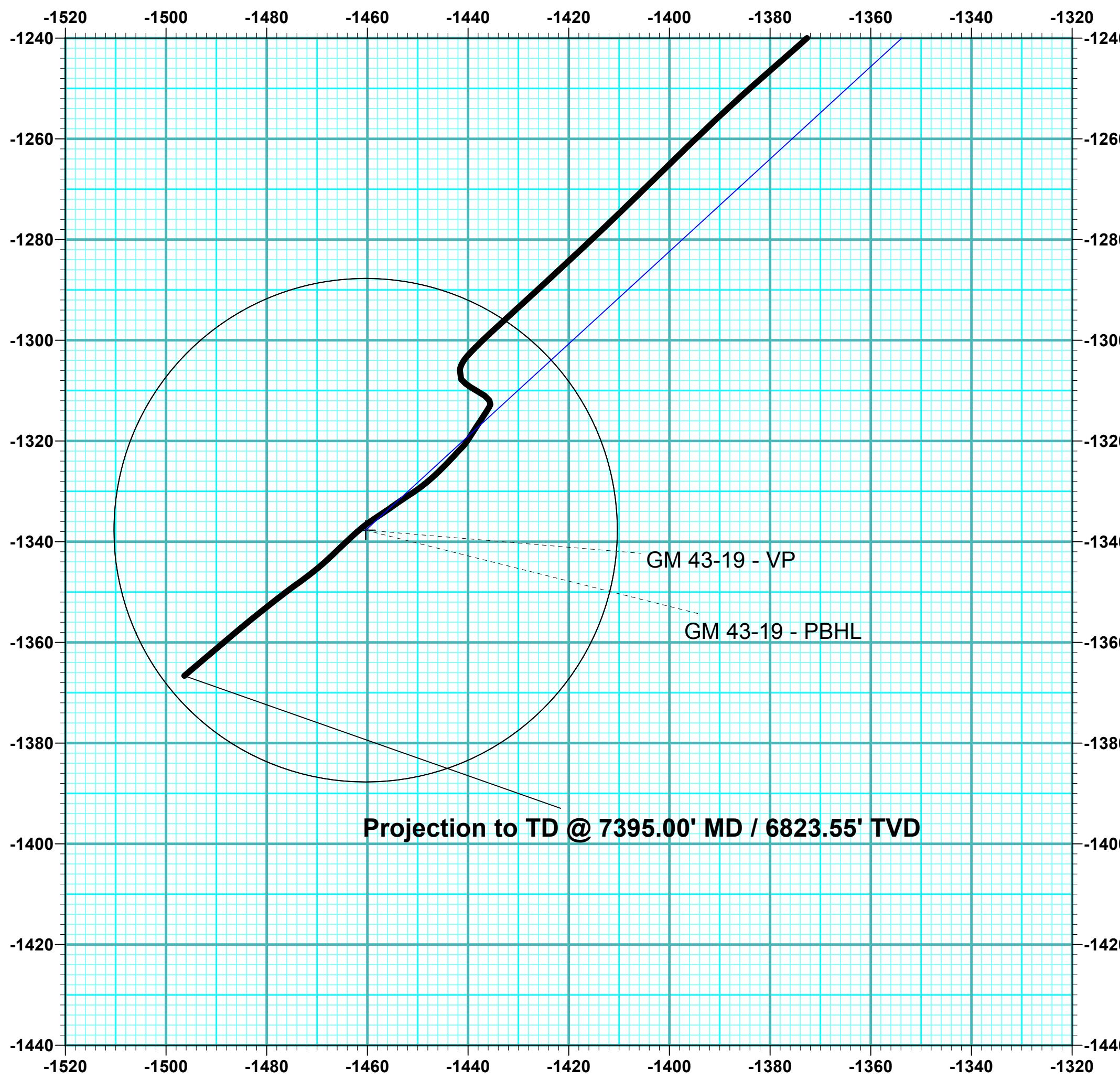
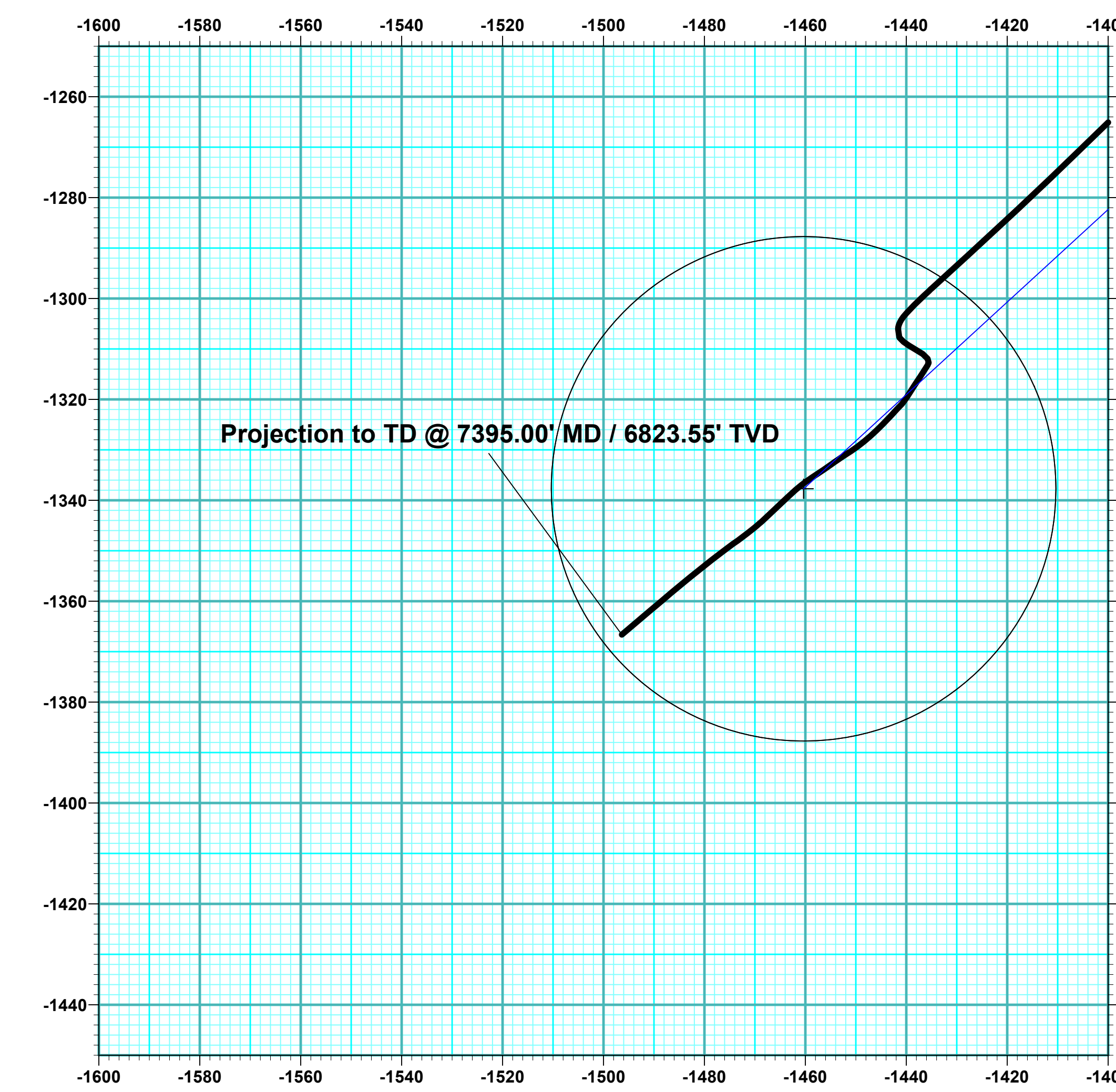
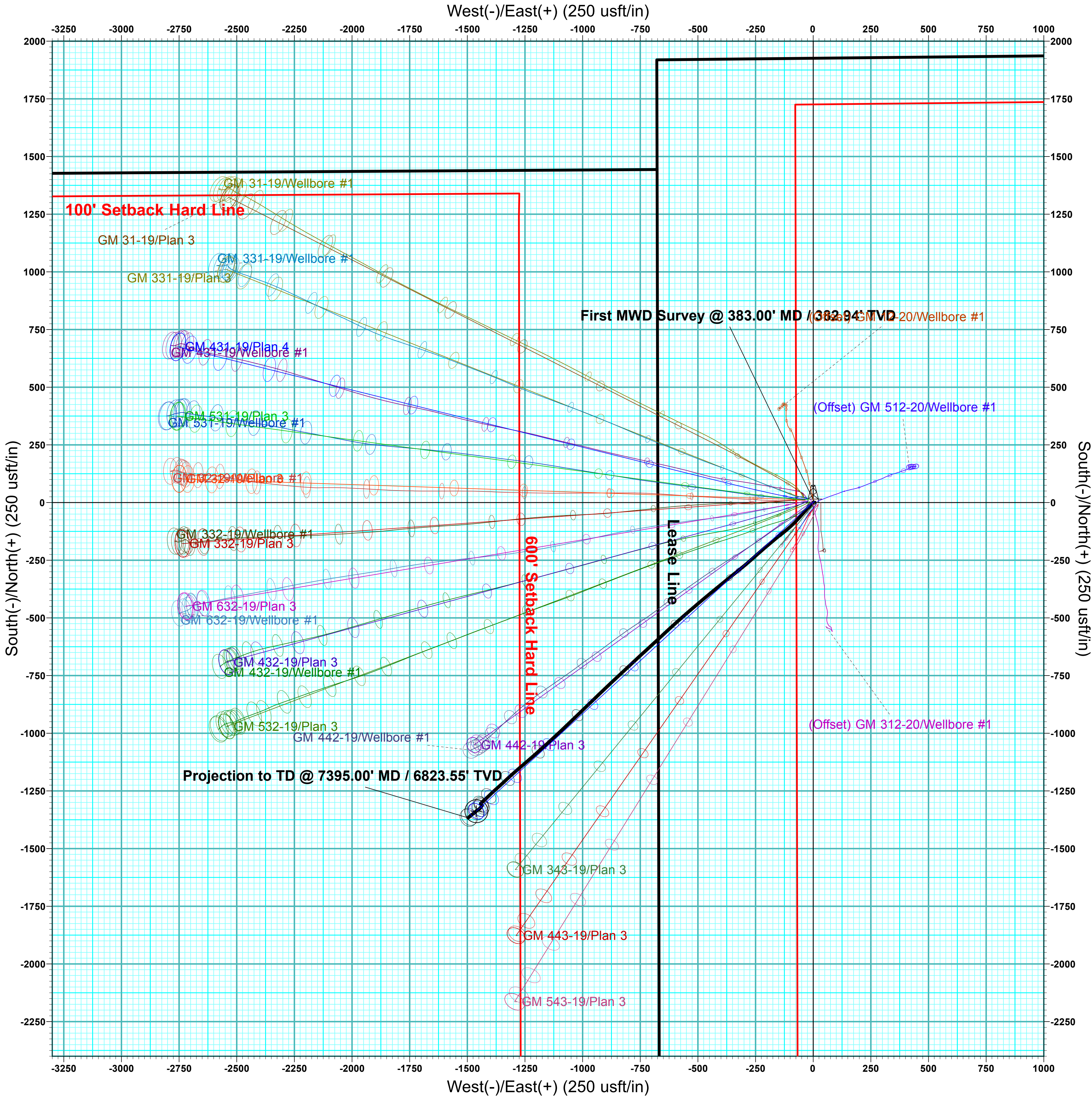
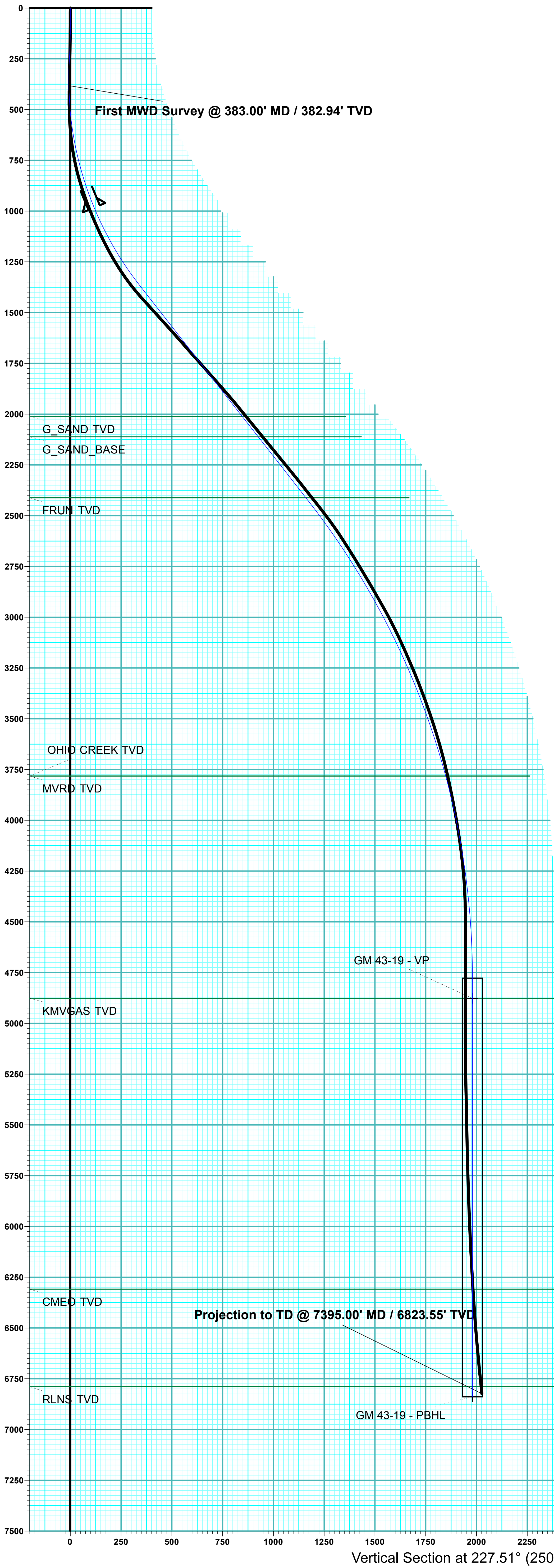
PROJECT DETAILS: Garfield County, CO

Geodetic System: US State Plane 1983
Datum: North American Datum 1983
Ellipsoid: GRS 1980
Zone: Colorado Central Zone
System Datum: Mean Sea Level



WELL DETAILS: GM 43-19					
Ground Elevation:		5747.50			
+N/-S	+E/-W	Northing	Easting	Latitude	Longitude
0.00	0.00	1622108.23	2255409.28	39.511769	-108.139480

DESIGN TARGET DETAILS							
Name	TVD	+N/-S	+E/-W	Northing	Easting	Latitude	Longitude
GM 43-19 - VP	4877.00	-1337.72	-1460.34	1620813.50	2253910.70	39.508097	-108.144655
GM 43-19 - PBHL	6839.00	-1337.72	-1460.34	1620813.50	2253910.70	39.508097	-108.144655



ANNOTATIONS									
MD	Inc	Azi	TVD	+N/-S	+E/-W	VSec	Departure	Annotation	
383.00	1.76	84.56	382.94	0.56	5.86	-4.69	5.88	First MWD Survey @ 383.00' MD / 382.94' TVD	
7395.00	5.71	229.71	6823.55	-1366.63	-1496.35	2026.51	2051.95	Projection to TD @ 7395.00' MD / 6823.55' TVD	

FORMATION TOP DETAILS		
TVDPath	MDPath	Formation
2012.00	2265.04	G_SAND TVD
2112.00	2392.02	G_SAND_BASE
2412.00	2772.97	FRUN TVD
3782.00	4316.64	MVRD TVD
3782.00	4316.64	OHIO CREEK TVD
4877.00	5423.25	KMGAS TVD
6309.00	6855.25	CMEQ TVD
6789.00	7335.25	RLNS TVD

DESIGN ANNOTATIONS									
MD	Inc	Azi	TVD	+N/-S	+E/-W	VSec	Departure	Annotation	
120.00	0.00	0.00	120.00	0.00	0.00	0.00	0.00	Start Build 3.00	
220.00	3.00	45.00	219.95	1.85	1.85	-2.61	2.62	EOB @ 3.00° Inc / 45.00° Azm	
270.00	3.00	45.00	269.89	3.70	3.70	-5.23	5.23	Start DLS 3.50° TFO -177.69	
1442.68	38.05	227.46	1364.38	-228.94	-251.89	340.38	356.85	EOB @ 38.05° Inc / 227.46° Azm	
2786.82	38.05	227.46	2422.91	-788.99	-862.28	1168.78	1185.24	Start Drop -1.50	
5323.25	0.00	0.00	4777.00	-1337.72	-1460.34	1980.42	1996.89	EOD @ Vertical	
7385.25	0.00	0.00	6839.00	-1337.72	-1460.34	1980.42	1996.89	TD @ 7385.25' MD / 6839.00' TVD	

