

Sec 20, T6S, R96W
GM 32-19
Q201098 & RM-200871
Plan 3

Company Name: Terra Energy Partners, LLP
GM 32-19
Garfield County, CO
Rig: KB=24' @ 5772.40usft (H&P #318)
Created by: Chase Chambers
Date: 14:47, December 25 2020

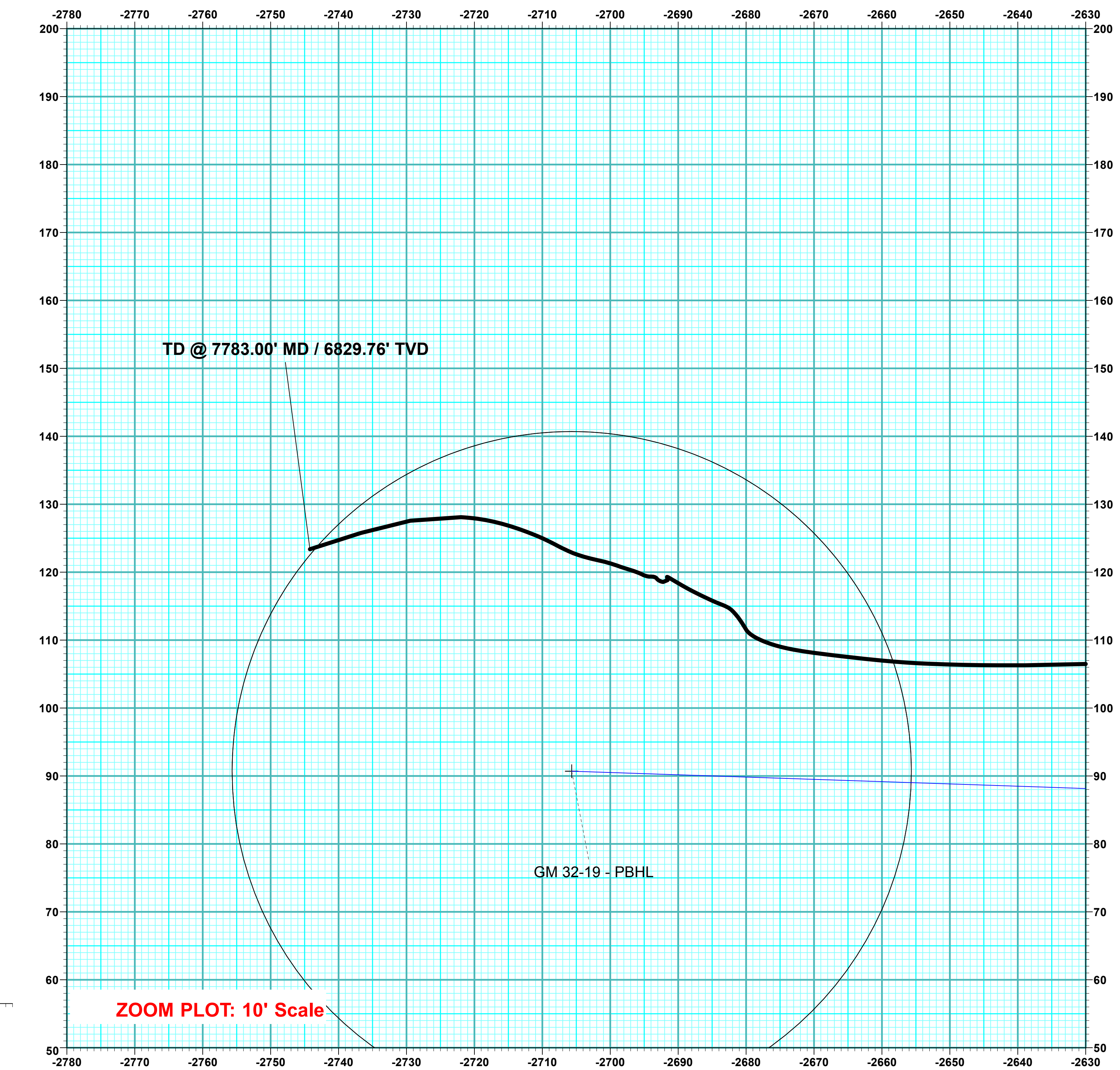
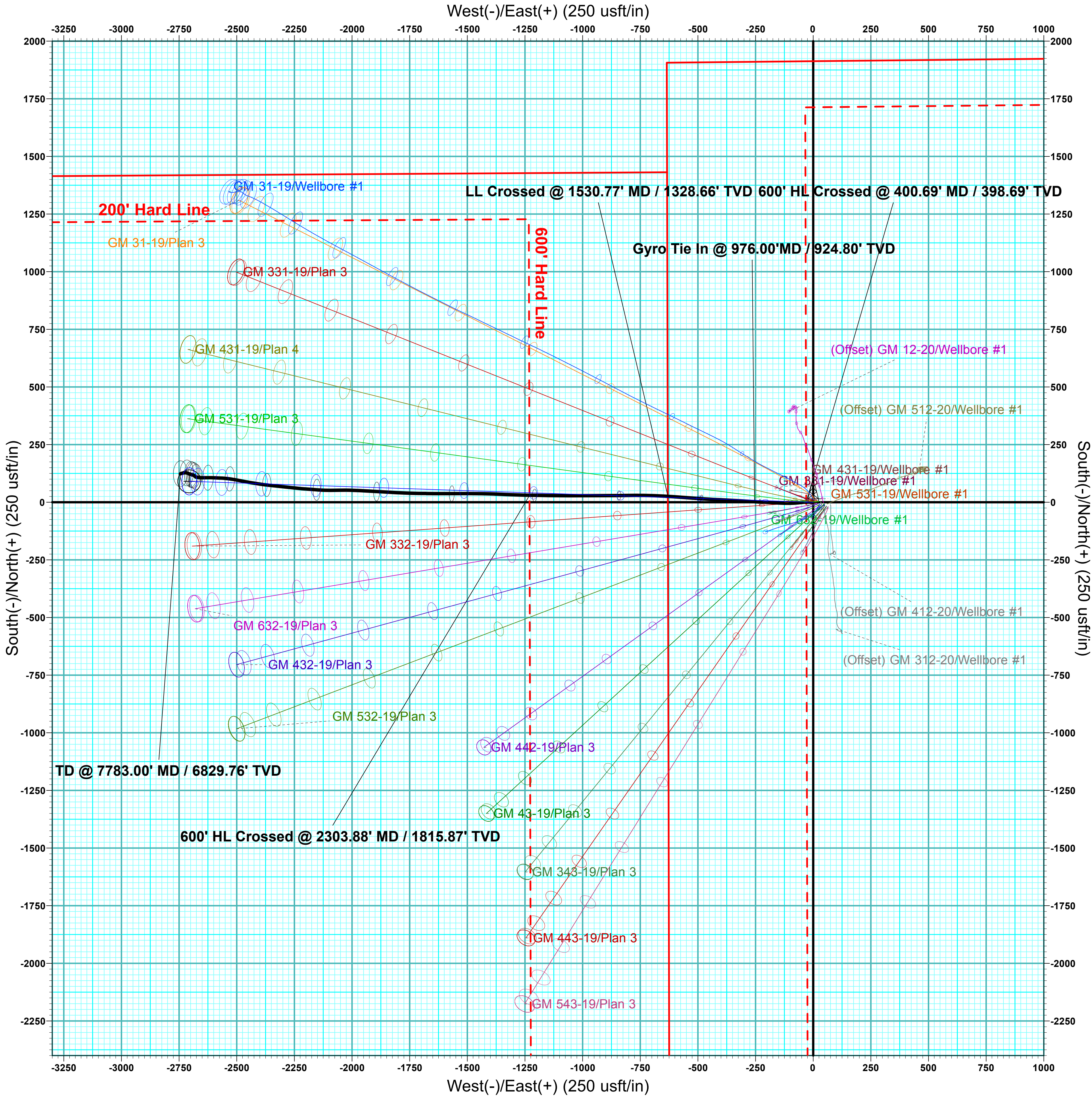
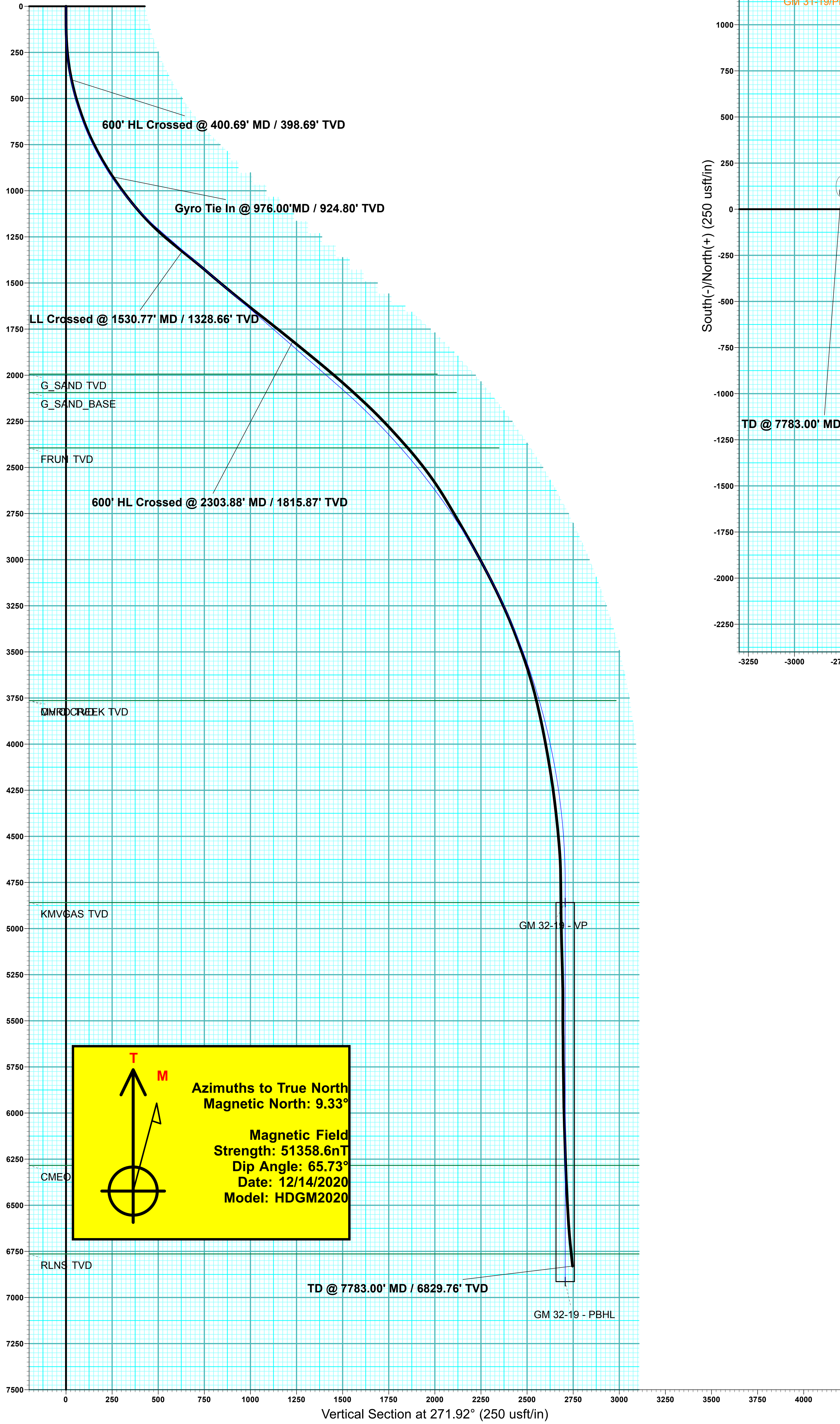
PROJECT DETAILS: Garfield County, CO

Geodetic System: US State Plane 1983
Datum: North American Datum 1983
Ellipsoid: GRS 1980
Zone: Colorado Central Zone
System Datum: Mean Sea Level



| DESIGN TARGET DETAILS | | | | | | | |
|-----------------------|---------|-------|----------|------------|------------|-----------|-------------|
| Name | TVD | +N/-S | +E/-W | Northing | Easting | Latitude | Longitude |
| GM 32-19 - VP | 4859.00 | 90.70 | -2705.67 | 1622291.10 | 2252664.50 | 39.512052 | -108.149223 |
| GM 32-19 - PBHL | 6914.00 | 90.70 | -2705.67 | 1622291.10 | 2252664.50 | 39.512052 | -108.149223 |

| WELL DETAILS: GM 32-19 | | | | | | |
|------------------------|-------|------------|------------|-----------|-------------|--|
| Ground Elevation: | | 5748.40 | | | | |
| +N/-S | +E/-W | Northing | Easting | Latitude | Longitude | |
| 0.00 | 0.00 | 1622121.83 | 2255366.39 | 39.511803 | -108.139633 | |



| DESIGN ANNOTATIONS | | | | | | | | | |
|--------------------|-------|--------|---------|-------|----------|---------|-----------|---------------------------------|--|
| MD | Inc | Azi | TVD | +N/-S | +E/-W | VSec | Departure | Annotation | |
| 120.00 | 0.00 | 0.00 | 120.00 | 0.00 | 0.00 | 0.00 | 0.00 | Start Build 4.00 | |
| 1344.21 | 48.97 | 271.92 | 1200.53 | 16.49 | -491.79 | 492.07 | 492.07 | EOB @ 48.97° Inc / 271.92° Azm | |
| 2649.92 | 48.97 | 271.92 | 2057.69 | 49.49 | -1476.19 | 1477.02 | 1477.02 | Start Drop -1.60 | |
| 5710.45 | 0.00 | 0.00 | 4759.00 | 90.70 | -2705.67 | 2707.19 | 2707.19 | EOD @ Vertical | |
| 7865.45 | 0.00 | 0.00 | 6914.00 | 90.70 | -2705.67 | 2707.19 | 2707.19 | TD @ 7865.45' MD / 6914.00' TVD | |

| ANNOTATIONS | | | | | | | | | |
|-------------|-------|--------|---------|--------|----------|---------|-----------|--|--|
| MD | Inc | Azi | TVD | +N/-S | +E/-W | VSec | Departure | Annotation | |
| 400.69 | 11.95 | 267.59 | 398.69 | 0.64 | -30.22 | 30.23 | 30.70 | 600' HL Crossed @ 400.69' MD / 398.69' TVD | |
| 976.00 | 33.92 | 273.62 | 924.80 | 2.47 | -254.07 | 254.01 | 254.54 | Gyro Tie In @ 976.00' MD / 924.80' TVD | |
| 1530.77 | 51.30 | 273.44 | 1328.66 | 25.56 | -629.76 | 630.26 | 630.95 | LL Crossed @ 1530.77' MD / 1328.66' TVD | |
| 2303.88 | 50.84 | 271.03 | 1815.87 | 30.41 | -1229.84 | 1230.17 | 1231.14 | 600' HL Crossed @ 2303.88' MD / 1815.87' TVD | |
| 7783.00 | 6.37 | 252.26 | 6829.76 | 123.37 | -2744.20 | 2746.79 | 2757.17 | TD @ 7783.00' MD / 6829.76' TVD | |