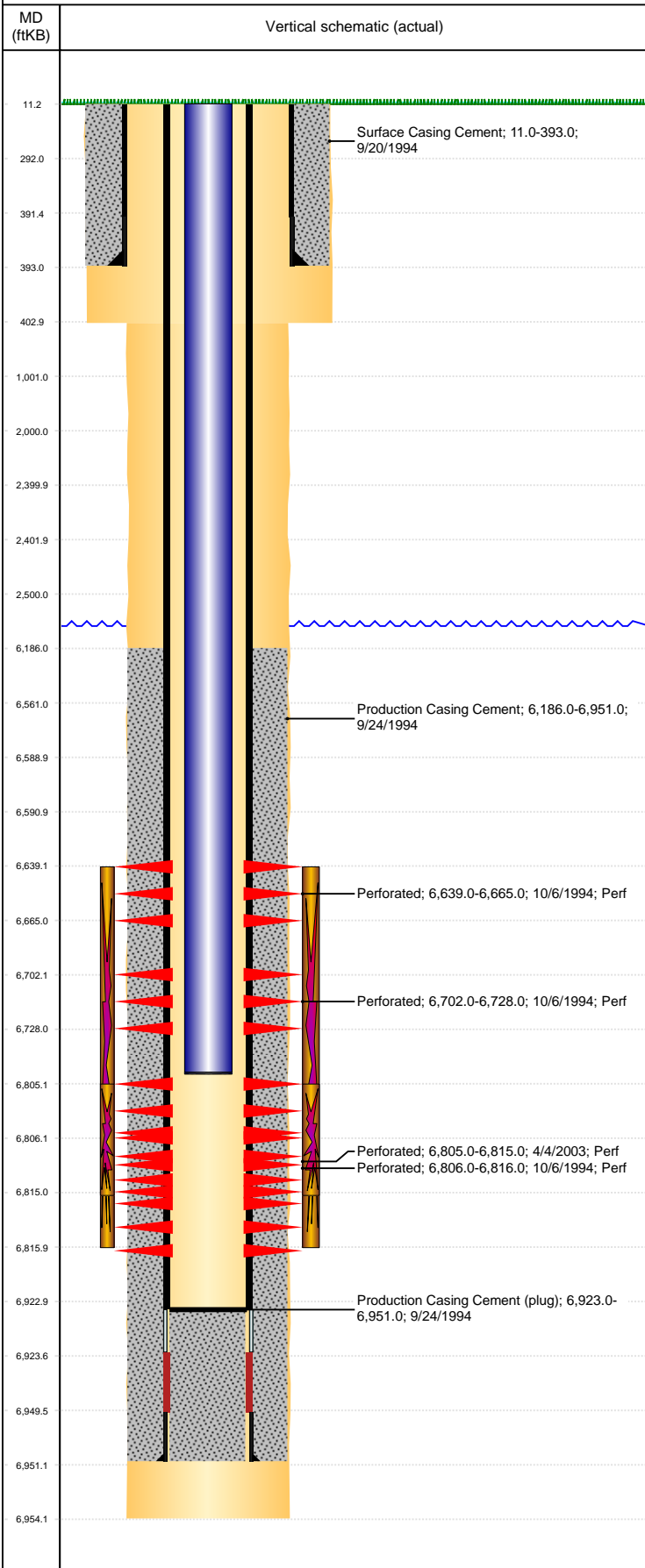


**Well Name: WARDLAW 35-22**

VERTICAL, ORIGINAL HOLE, 3/22/2021 10:48:34 AM



Well Header									
API 05-123-18537		Business Unit DJ BASIN			District 15		Well Config VERTICAL		
KB - GL / MSL (ft... 11.00		Spud Date 9/20/1994		P & A Date		Well Production Status PR			SoRT No
Comment									
Surface Location (Congressional)									
Qtr 3 NW	Qtr 4 NW	Section 35	Twnshp 6	Twنش... N	Range 64	Rng E/... W	Actual Latitude (°) 40.44853200	Actual Longitude (°) -104.52457700	
Wellbore Sections									
Section Des			Size (in)			Act Top, MD (ftKB)		Act Btm, MD (ftKB)	
SURFACE			12 1/4			11		403	
PRODUCTION			7 7/8			403		6,954	
Casing Strings									
Csg Des			Run Date		OD (in)	Wt/Len (lb/ft)	Grade	Top, MD (ftKB)	MD (ftKB)
Surface			9/20/1994		8 5/8	24.00	J-55	11.0	393.0
Production			9/24/1994		4 1/2	15.10	N-80	11.0	6,951.0
Cement									
Des					Start Date		Top (ftKB)		Btm (ftKB)
Surface Casing Cement					9/20/1994		11.0		393.0
Production Casing Cement					9/24/1994		6,186.0		6,951.0
Zone Statuses									
Zone Name	Status Date	Status	Fluid Type	Job				Prod Method	
CODELL	10/26/1994	PR		DRILLING/COMPLETION - ORIGINAL, 9/20/1994...					
CODELL	4/20/2003	PR		RE-FRAC, 4/2/2003 00:00					
NIOBRARA	10/26/1994	PR		DRILLING/COMPLETION - ORIGINAL, 9/20/1994...					
Perforation Data									
Linked Zone		Bnch/Stg	Entered Shot Total	Top (ftKB)		Btm (ftKB)		Date	
NIOBRARA, ORIGINAL HOLE		B	6	6,639.00		6,665.00		10/6/1994	
NIOBRARA, ORIGINAL HOLE		C	6	6,702.00		6,728.00		10/6/1994	
CODELL, ORIGINAL HOLE			40	6,805.00		6,815.00		4/4/2003	
CODELL, ORIGINAL HOLE			6	6,806.00		6,816.00		10/6/1994	
Stimulation Intervals									
Zone				Start Date		Top (ftKB)		Btm (ftKB)	
NIOBRARA-CODELL, ORIGINAL HOLE				10/18/1994		6,639.0		6,816.0	
CODELL, ORIGINAL HOLE				4/15/2003		6,805.0		6,815.0	
Other In Hole									
Run Date		Des			Make		OD (in)	Top (ftKB)	Btm (ftKB)
Logs									
Date		Type				Top, MD (ftKB)		Btm, MD (ftKB)	
9/24/1994		COMPENSATED DENSITY				3,300.0		6,924.0	
9/24/1994		INDUCTION				393.0		6,948.0	
9/28/1994		CEMENT BOND				6,090.0		6,887.0	
4/16/2015		GYRO				11.0		6,700.0	
Plug Back Total Depths									
Date		Type		Com				Depth (ftKB)	
9/28/1994		FILL		DEPTH LOGGER ON CBL				6,891.0	
4/17/2003		FILL		LAST REPORTED CLEAN OUT				6,923.0	