

Company: PDC Energy Inc		Well: Pharaoh 5N		Field Name: Wattenberg		Country Name: United States		State Name: Colorado		County Name: Weld	
<div><div>XEM GAMMA RAY</div><div>1in/100ft Measured Depth</div><div>Final Print</div><div>Recorded Mode</div></div> <div>Schlumberger</div>											
Company: PDC Energy Inc											
Well: Pharaoh 5N											
Field Name: Wattenberg											
Country Name: United States											
State Name: Colorado											
County Name: Weld											
Latitude: 40°21'11.600"N				API Number: 05-123-48834							
Longitude: 104°29'23.704"W				Rig Name: Ensign 142							
Spud Date: 24-Oct-2020				Rig Type: Land							
Log Interval: 1701.00--16826.98(ft)				Job Number: 20CCCO0561							
Depth Source: Driller's Depth				Print Type: Final Print							
Log Measured From: Drill Floor				Northings: 1373122.35(ft)							
Drill Floor Elevation: 4621 (ft)				Easting: 3281507.16(ft)							
Ground Level Elevation: 4593(ft)				Coordinate System: NAD83 Colorado State Plane, Northern Zone, US Feet							
Permanent Datum: Sea Level											

Disclaimer
<p>THE USE OF AND RELIANCE UPON THIS RECORDED-DATA BY THE HEREIN NAMED COMPANY (AND ANY OF ITS AFFILIATES, PARTNERS, REPRESENTATIVES, AGENTS, CONSULTANTS AND EMPLOYEES) IS SUBJECT TO THE TERMS AND CONDITIONS AGREED UPON BETWEEN SCHLUMBERGER AND THE COMPANY, INCLUDING: (a) RESTRICTIONS ON USE OF THE RECORDED-DATA; (b) DISCLAIMERS AND WAIVERS OF WARRANTIES AND REPRESENTATIONS REGARDING COMPANY'S USE AND RELIANCE UPON THE RECORDED-DATA; AND (c) CUSTOMER'S FULL AND SOLE RESPONSIBILITY FOR ANY INFERENCE DRAWN OR DECISION MADE IN CONNECTION WITH THE USE OF THIS RECORDED-DATA.</p>

Operational Run Summary			
Notes			
Run 1 (Bit Size: 8.5 in)			
DateTime Log Started	14-Jan-2021 08:42:16	DateTime Log Finished	15-Jan-2021 02:41:31
Start Depth (ft)	1725	Stop Depth (ft)	3604
Mud Type	Oil Based Mud	Mud Density (lbm/gal)	10.2
Potassium (%)	0	Barite	Yes
GR Sensor Offset (ft)	24.66	Calibration Coefficient	0.52
DNI Sensor Offset (ft)	20.07		
Run 2 (Bit Size: 8.5 in)			
DateTime Log Started	15-Jan-2021 02:47:45	DateTime Log Finished	17-Jan-2021 18:27:54
Start Depth (ft)	3604	Stop Depth (ft)	16827
Mud Type	Oil Based Mud	Mud Density (lbm/gal)	10.2
Potassium (%)	0	Barite	Yes
GR Sensor Offset (ft)	24.63	Calibration Coefficient	0.52

GR Sensor Offset (ft)	24.03	Calibration Coefficient	0.52
DNI Sensor Offset (ft)	20.04		

Log

Description: XEM GAMMA RAY

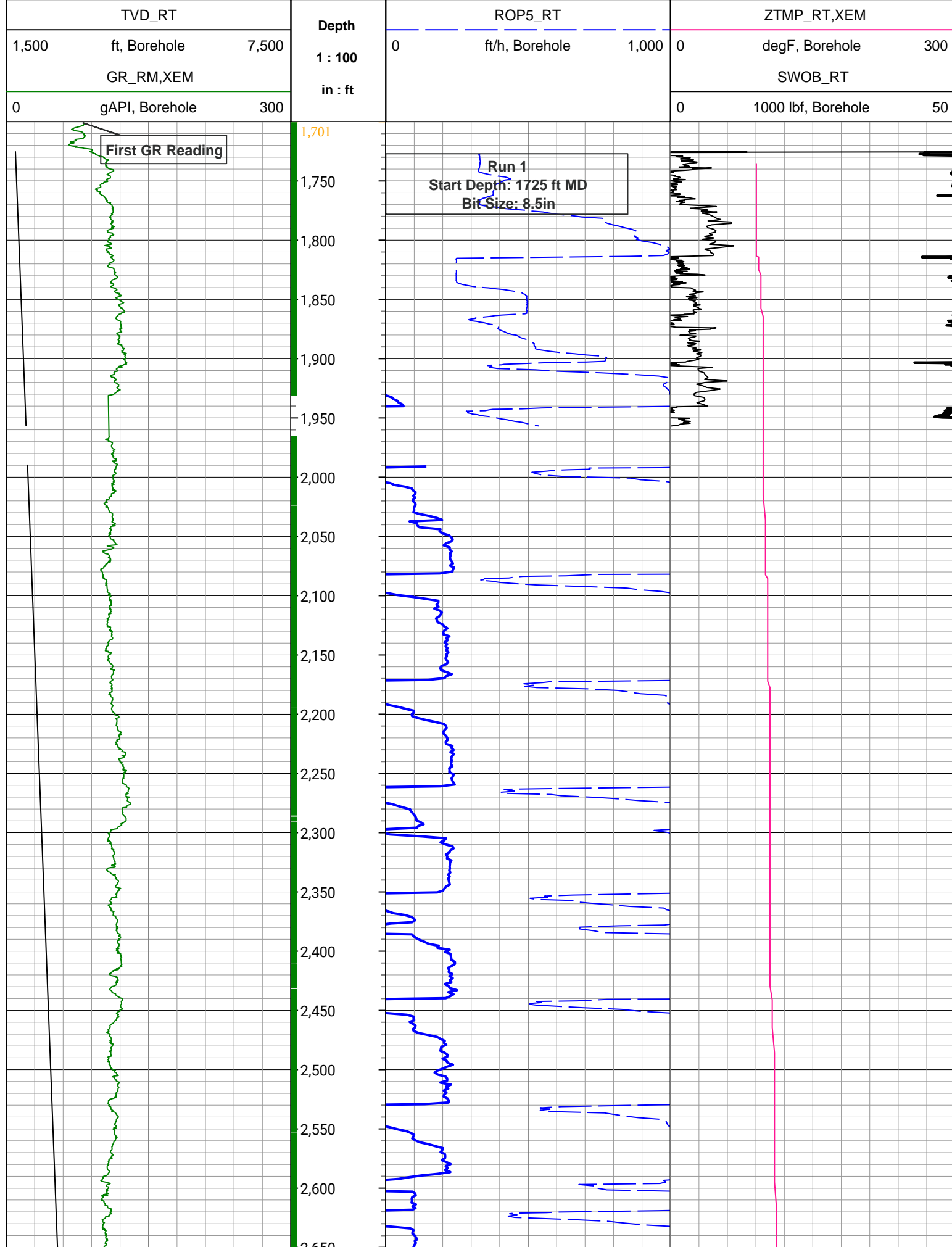
Format: XEM_GR_WOB_PDC

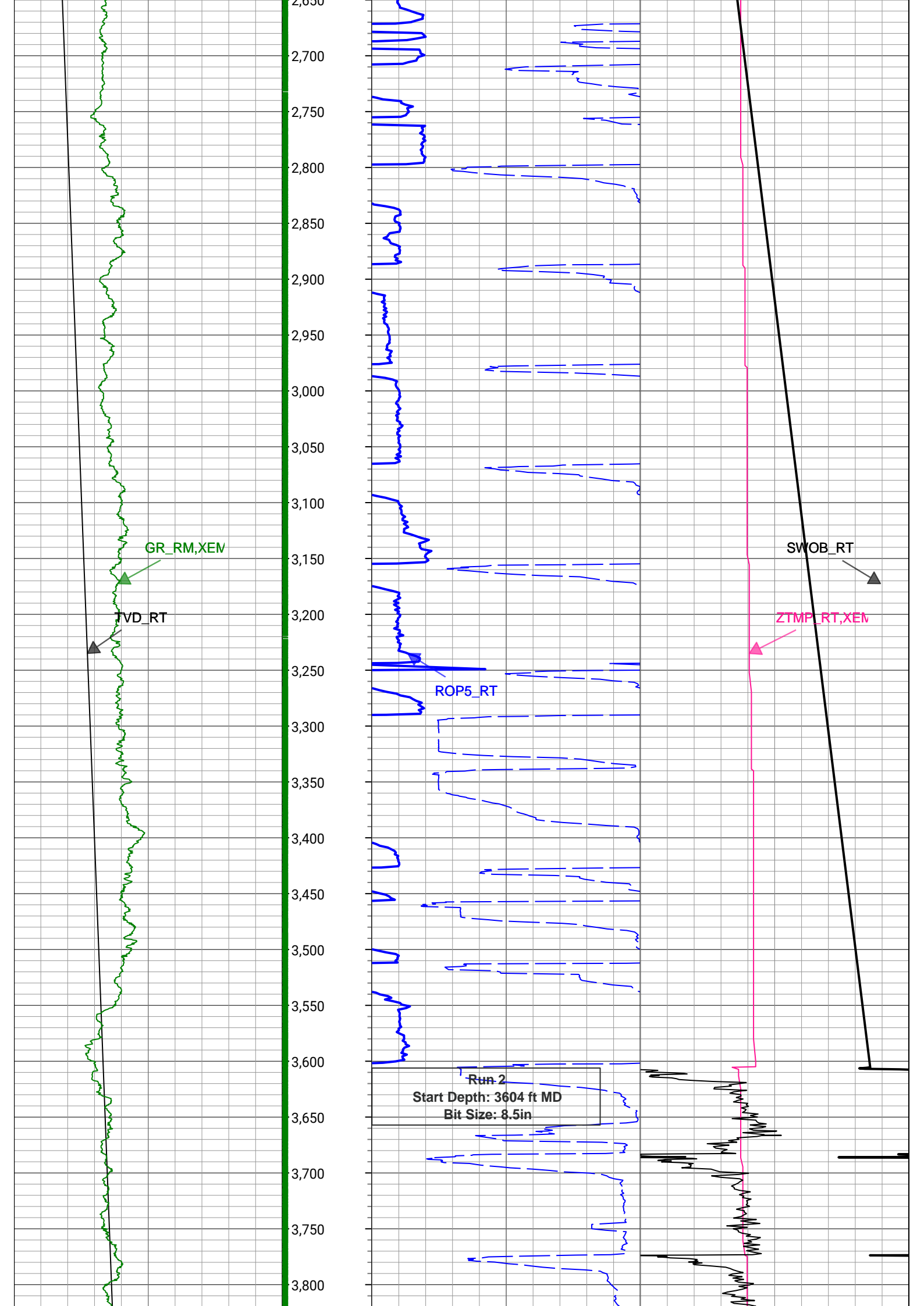
Index Scale: 1in/100ft

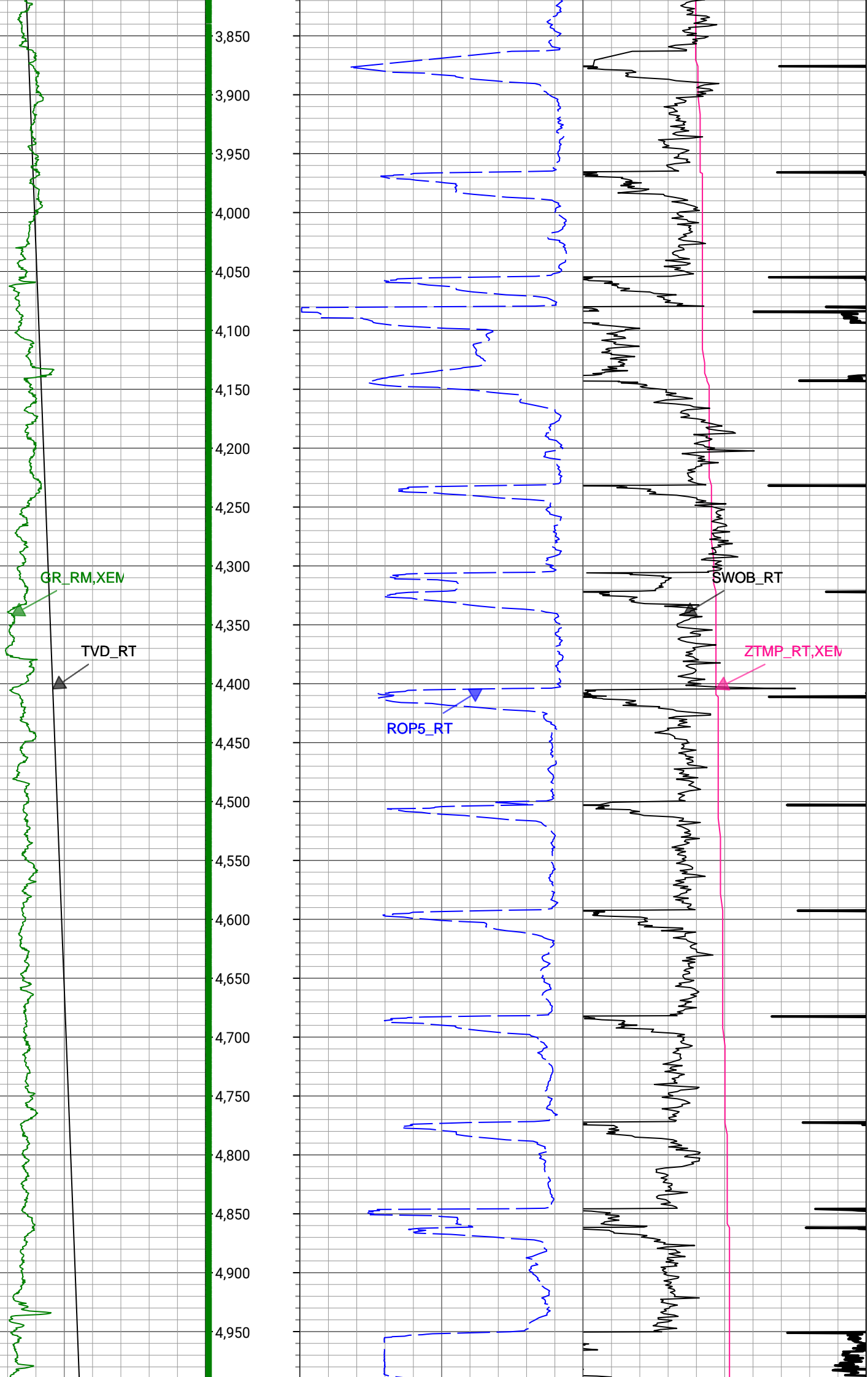
Index Unit: ft

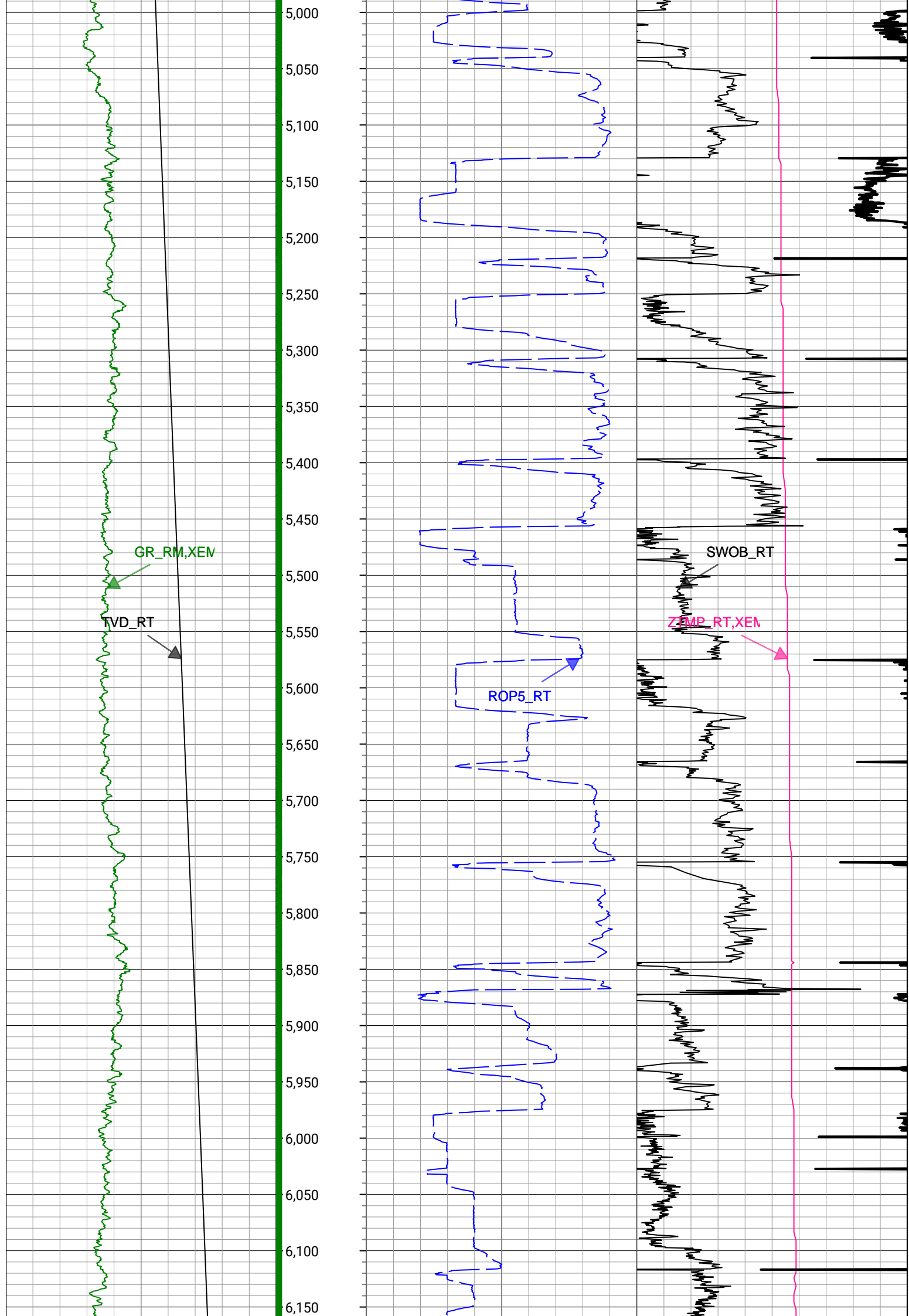
Index Type: Measured Depth

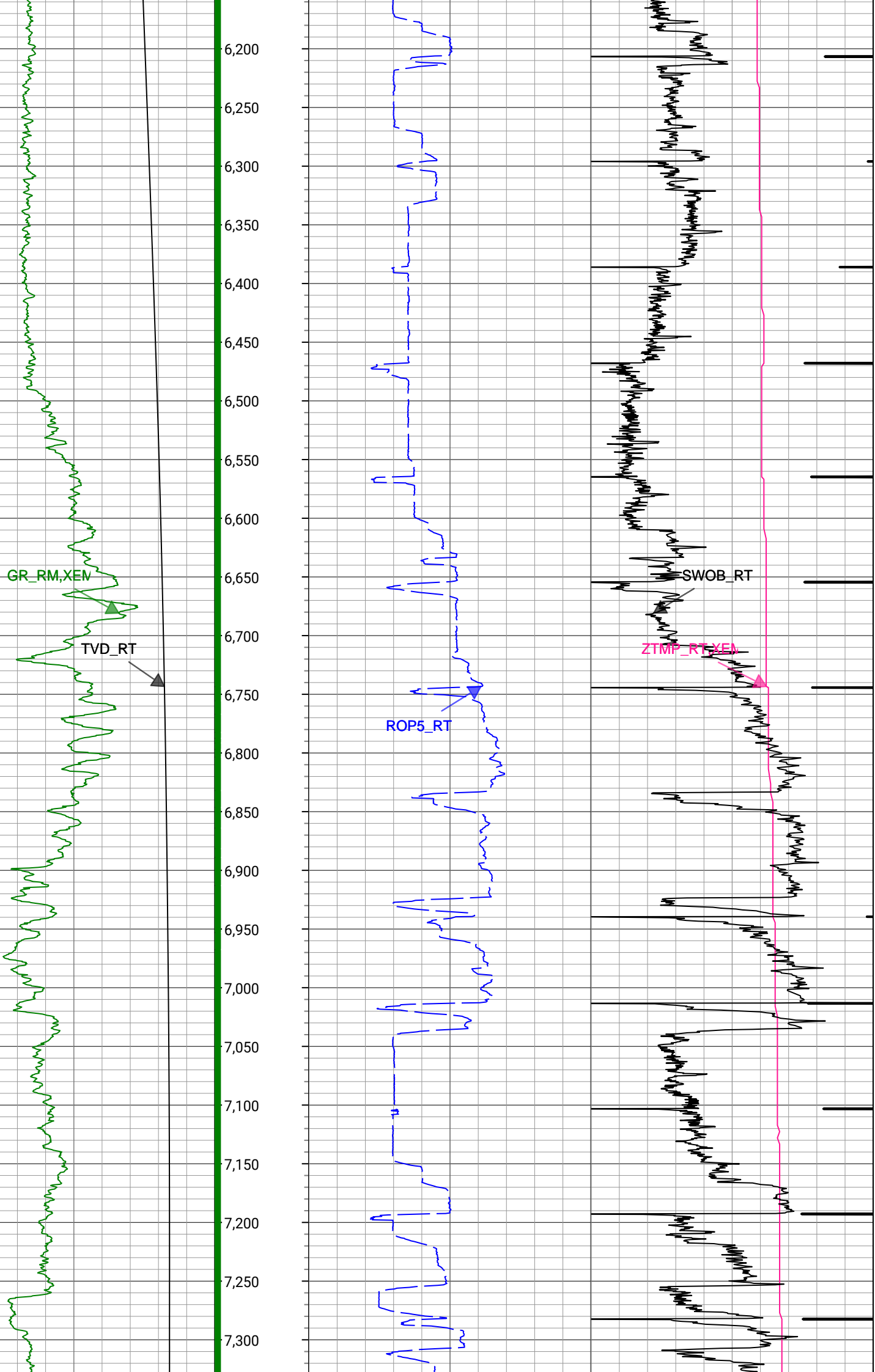
Creation Date: 18-Jan-2021

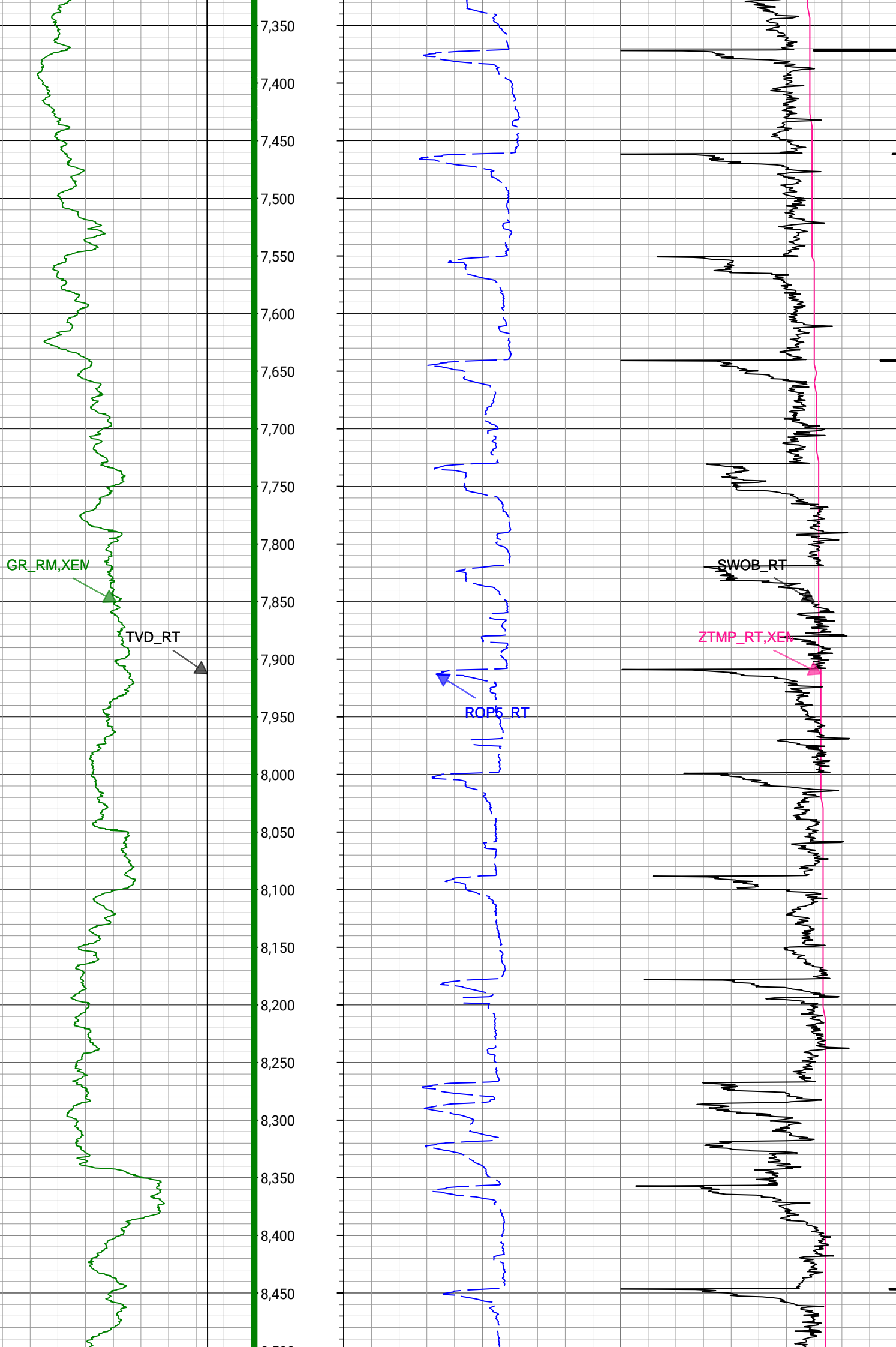


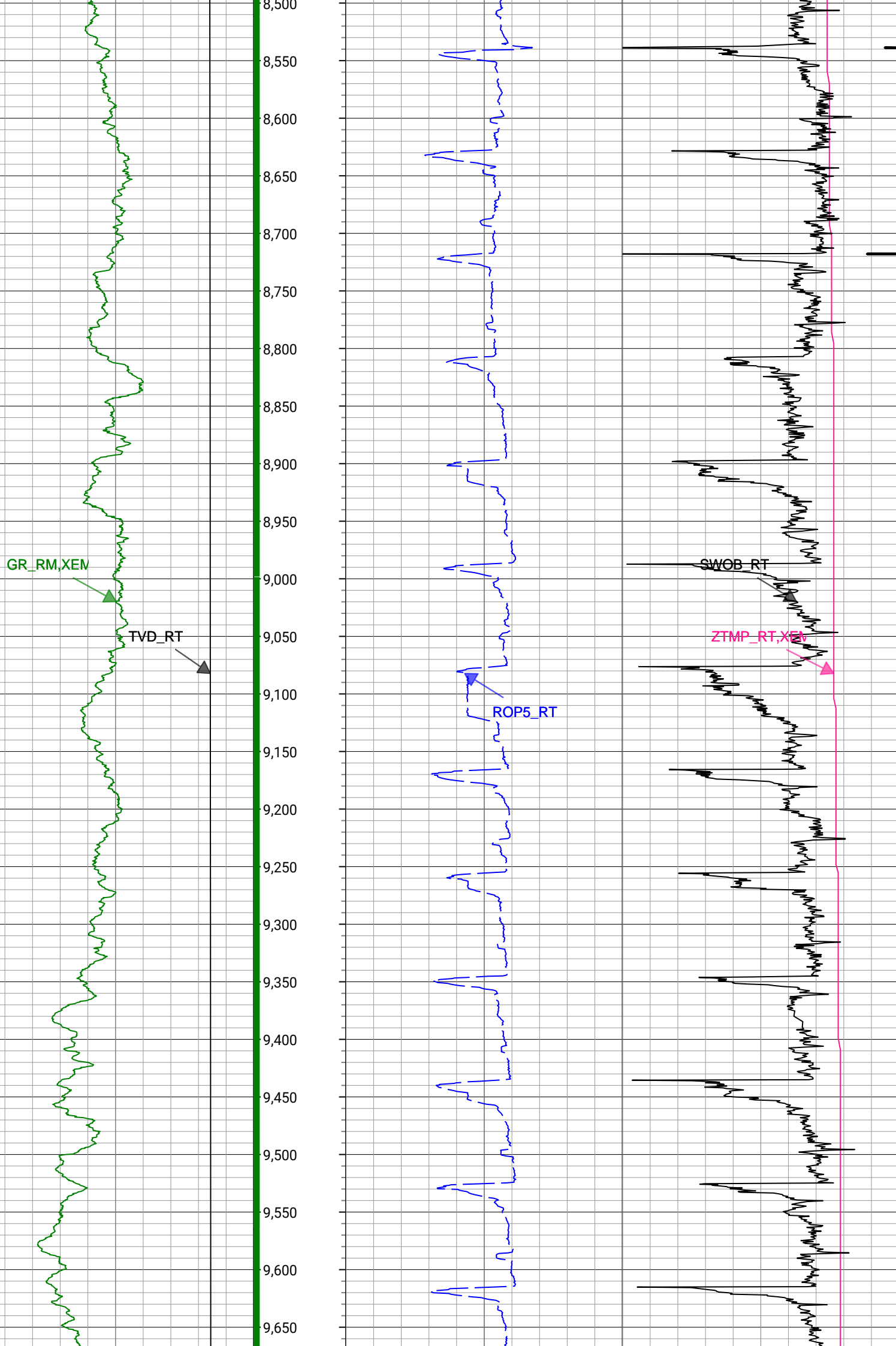


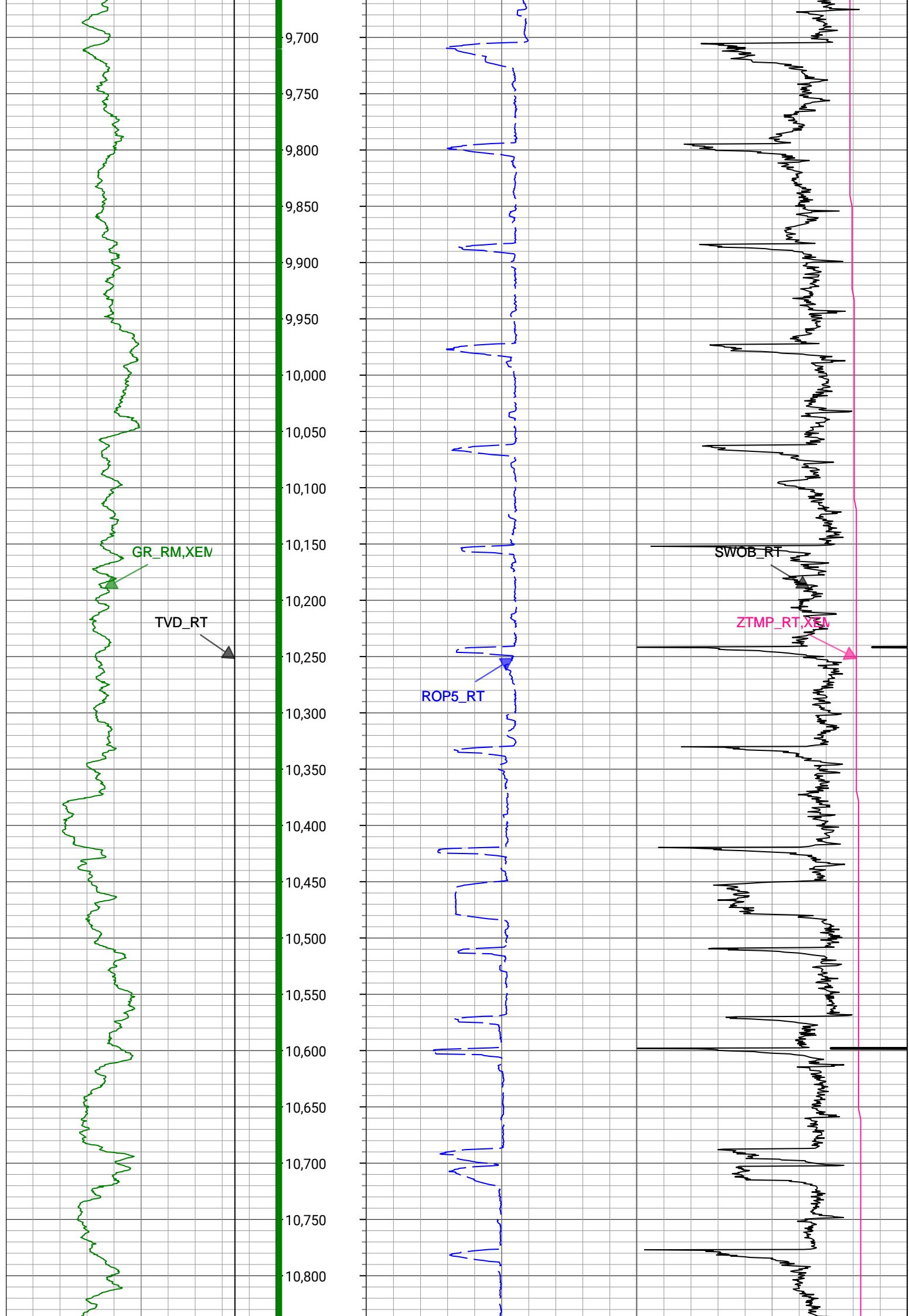


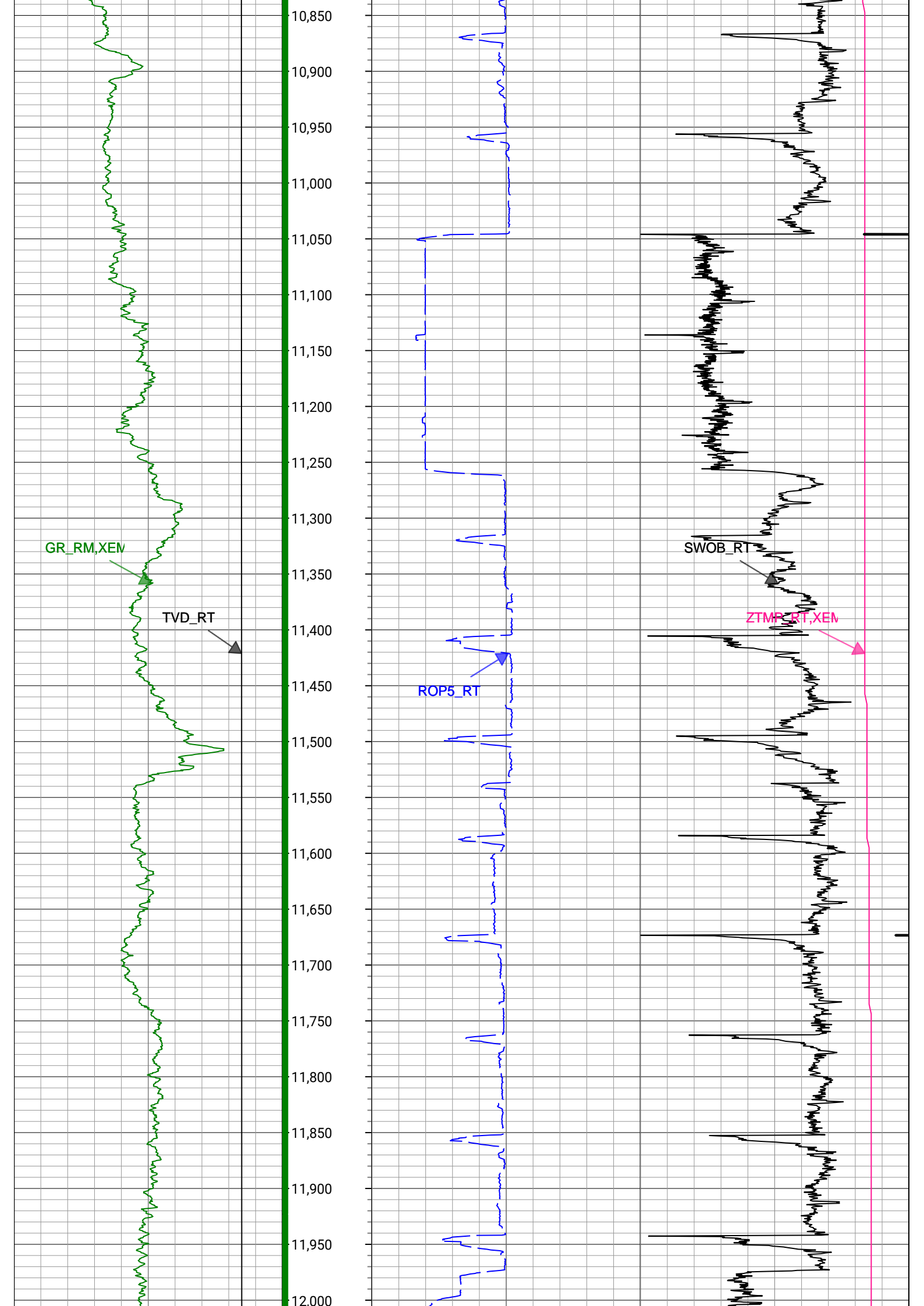


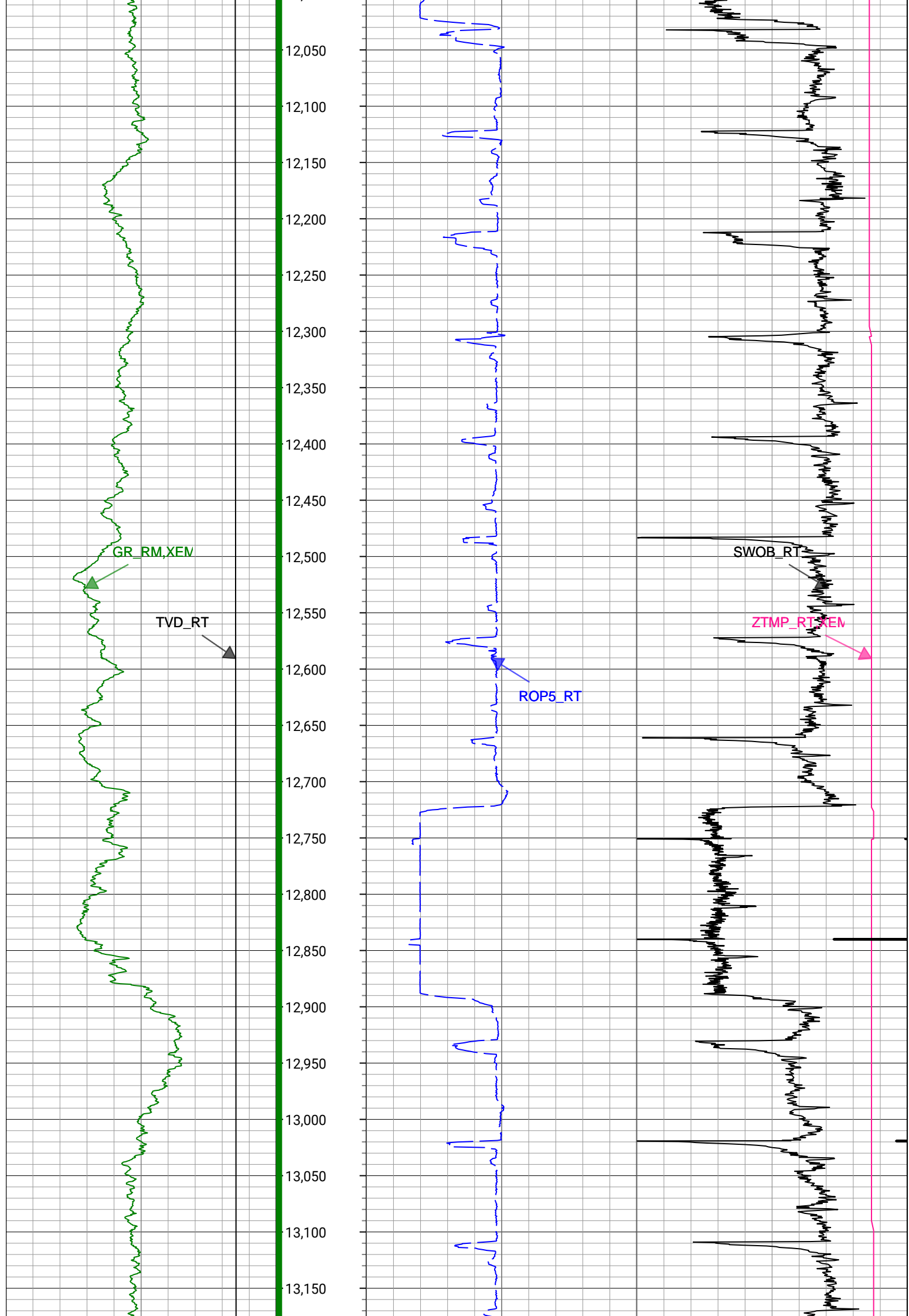


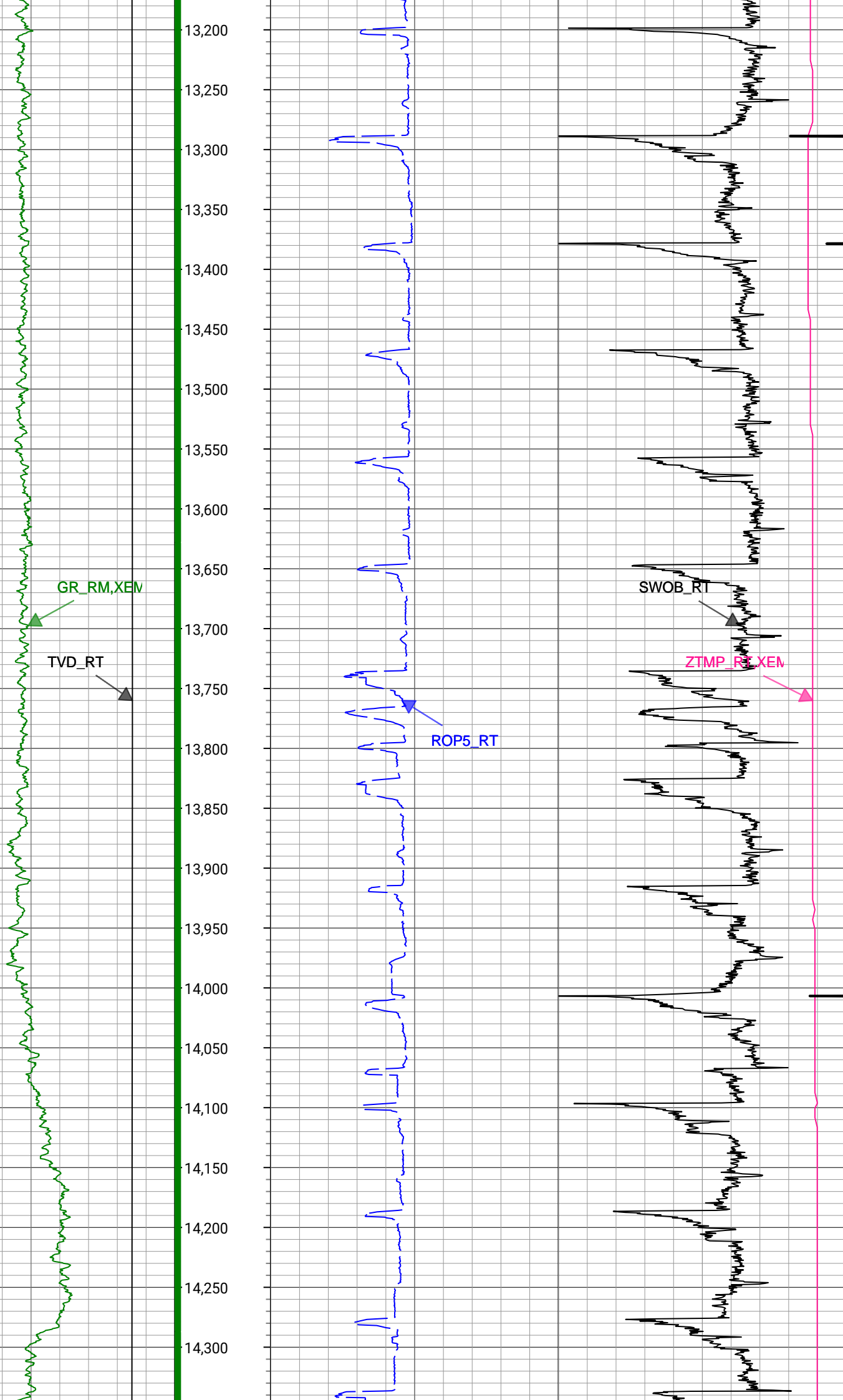


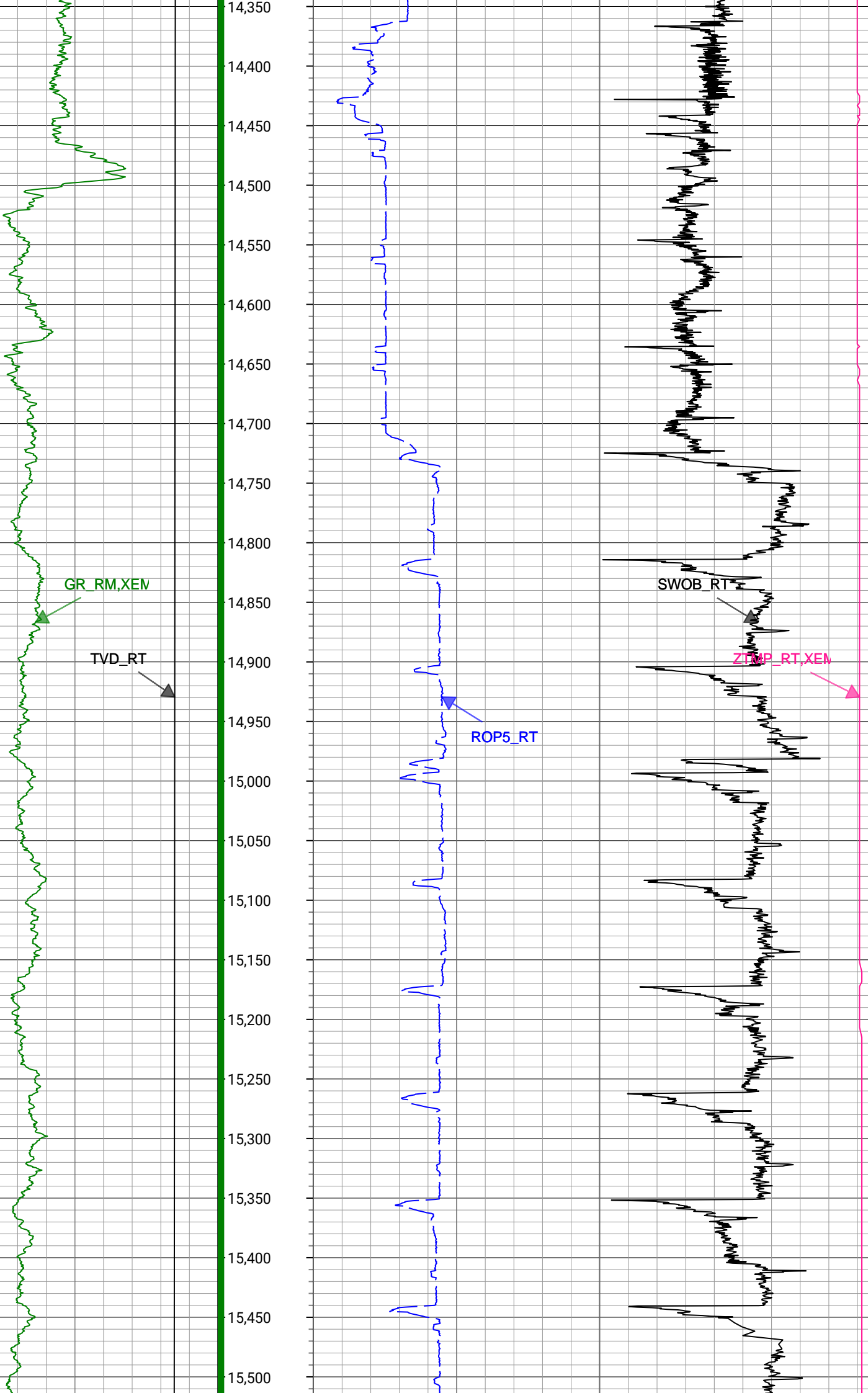


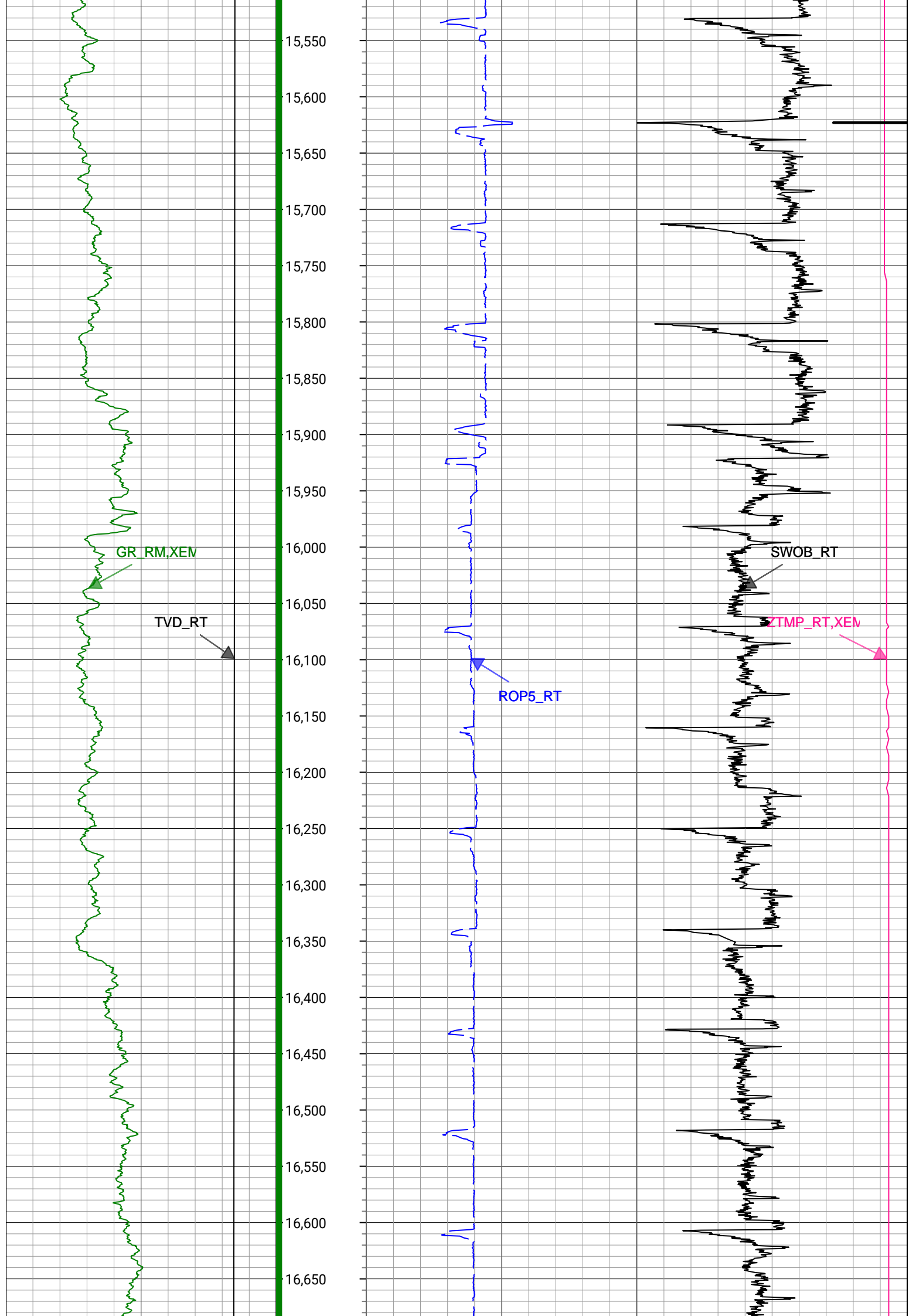


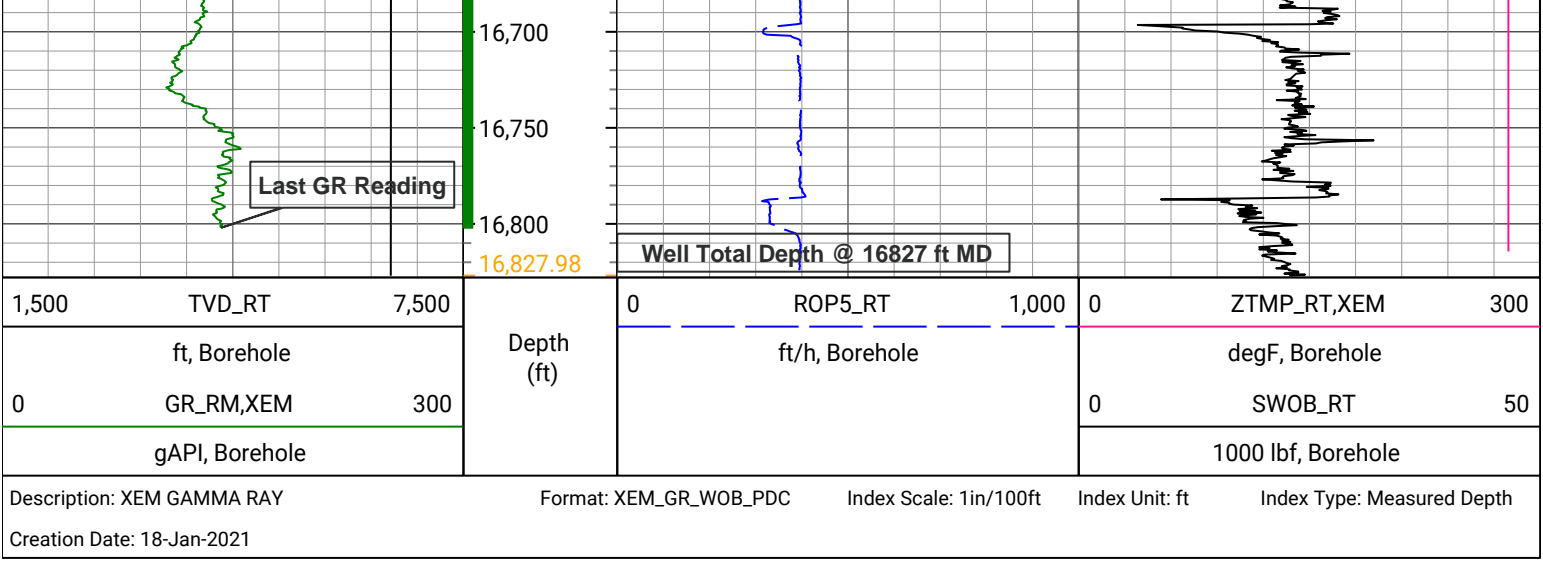












Survey Record

Survey Calculation

North Reference: True North

Tie In Point

Measured Depth:	0(ft)	Inclination:	0(deg)	Azimuth:	0(deg)
True Vertical Depth:	0(ft)	North Displacement:	0(ft)	East Displacement:	0(ft)

D&I Inits - Run - 1

Geomagnetic Model:	HDGM 2021	Geomagnetic Date:	11-Jan-2021 17:00:00
Location B:	51957(nT)	Location G:	999.049(mgn)
Magnetic Dip:	66.74(deg)	Magnetic Dec:	7.906(deg)
Total Correction:	7.906		

D&I Inits - Run - 2

Geomagnetic Model:	HDGM 2021	Geomagnetic Date:	09-Jan-2021 17:00:00
Location B:	51957(nT)	Location G:	999.049(mgn)
Magnetic Dip:	66.74(deg)	Magnetic Dec:	7.906(deg)
Total Correction:	7.906		

MD(ft)	Incl(deg)	Azim(deg)	TVD(ft)	V Sec(ft)	N/-S(ft)	E/-W(ft)	DLS (deg/100ft)	Closure Distance (ft)	Closure Azimuth (deg)	Tool Type
0	0	0	0	0.00	0	0	0.00			TIP
162	0.26	273.41	162	0.36	0.02	-0.37	0.16	0.37	273.41	MWD
254	1.49	163.19	253.99	0.37	-1.11	-0.23	1.74	1.13	191.67	MWD
375	3.78	161.43	374.85	-0.66	-6.4	1.5	1.89	6.57	166.84	MWD
465	3.87	159.15	464.65	-1.94	-12.05	3.52	0.2	12.55	163.71	MWD
554	4.48	168.64	553.42	-2.88	-18.26	5.28	1.03	19.01	163.89	MWD
643	6.95	167.76	641.97	-3.58	-26.93	7.1	2.78	27.86	165.23	MWD
733	8.27	169.87	731.17	-4.35	-38.63	9.39	1.5	39.75	166.33	MWD
822	9.15	171.98	819.15	-4.73	-51.94	11.51	1.05	53.2	167.51	MWD
912	10.82	172.33	907.78	-4.85	-67.4	13.63	1.86	68.76	168.56	MWD
1002	12.13	167.94	995.98	-5.66	-85.02	16.74	1.75	86.65	168.86	MWD
1091	13.37	168.11	1082.78	-7.23	-104.23	20.81	1.39	106.29	168.71	MWD
1181	14.07	168.29	1170.22	-8.87	-125.13	25.18	0.78	127.63	168.62	MWD
1270	14.86	165.65	1256.4	-11.07	-146.78	30.2	1.16	149.85	168.37	MWD
1359	16	163.37	1342.19	-14.42	-169.59	36.54	1.45	173.48	167.84	MWD
1448	16.18	161.96	1427.7	-18.68	-193.13	43.89	0.48	198.05	167.2	MWD
1538	14.68	160.73	1514.45	-23.35	-215.82	51.54	1.71	221.89	166.57	MWD
1665	15.83	162.49	1636.98	-29.71	-247.53	62.06	0.98	255.19	165.93	MWD

Year	1950	1955	1960	1965	1970	1975	1980	1985	1990	1995	Manual
1791	14.71	160.7	1758.53	-36.03	-279.02	72.52	0.96	288.29	165.43		Manual
1880	14.64	158.23	1844.63	-41.15	-300.13	80.42	0.71	310.72	165		Manual
1970	16.57	159.59	1931.3	-46.87	-322.72	89.12	2.18	334.8	164.56		Manual
2060	17.38	156.6	2017.38	-53.47	-347.09	98.93	1.32	360.91	164.09		Manual
2149	17.3	162.73	2102.35	-59.41	-371.92	108.14	2.05	387.33	163.79		Manual
2238	16.14	162.33	2187.58	-63.88	-396.35	115.83	1.31	412.92	163.71		Manual
2328	16.42	165.35	2273.98	-67.72	-420.57	122.84	0.99	438.15	163.72		Manual
2418	17.39	164.38	2360.09	-71.26	-445.83	129.68	1.12	464.31	163.78		Manual
2508	17.51	162.15	2445.95	-75.64	-471.67	137.45	0.75	491.29	163.75		Manual
2598	17.44	166.53	2531.8	-79.53	-497.68	144.74	1.46	518.3	163.78		Manual
2687	17.17	166.2	2616.77	-82.41	-523.41	150.98	0.32	544.75	163.91		Manual
2777	17.38	161.52	2702.71	-86.47	-549.06	158.41	1.56	571.45	163.91		Manual
2867	16.87	165.11	2788.72	-90.77	-574.43	166.03	1.3	597.94	163.88		Manual
2956	17.48	165.08	2873.75	-94.2	-599.82	172.79	0.69	624.22	163.93		Manual
3046	17.07	163.28	2959.69	-98.12	-625.54	180.07	0.75	650.94	163.94		Manual
3136	16.07	163.27	3045.96	-102.28	-650.12	187.46	1.11	676.6	163.92		Manual
3227	16.9	161.88	3133.21	-106.79	-674.75	195.19	1.01	702.42	163.87		Manual
3316	17.09	165.05	3218.33	-110.91	-699.68	202.59	1.06	728.42	163.85		Manual
3406	16.8	160.2	3304.43	-115.45	-724.7	210.41	1.6	754.62	163.81		Manual
3495	16.95	167.17	3389.6	-119.44	-749.45	217.65	2.28	780.41	163.81		Manual
3584	17.82	164.55	3474.54	-122.58	-775.23	224.16	1.31	806.98	163.87		Manual
3674	17.78	165.03	3560.23	-126.33	-801.77	231.37	0.17	834.49	163.9		Manual
3763	18.26	166.41	3644.86	-129.63	-828.46	238.16	0.72	862.01	163.96		Manual
3853	17.52	166.23	3730.51	-132.65	-855.32	244.7	0.82	889.63	164.03		Manual
3943	17.43	164.83	3816.36	-135.98	-881.49	251.45	0.48	916.65	164.08		Manual
4032	18.13	166.17	3901.11	-139.34	-907.8	258.25	0.91	943.82	164.12		Manual
4121	16.81	165.58	3986	-142.47	-933.71	264.76	1.5	970.52	164.17		Manual
4211	16.61	165.14	4072.2	-145.73	-958.74	271.3	0.26	996.39	164.2		Manual
4301	17.45	165.99	4158.25	-148.96	-984.27	277.87	0.97	1022.74	164.24		Manual
4391	17.06	164.12	4244.2	-152.47	-1010.06	284.75	0.75	1049.43	164.26		Manual
4480	17.97	165.72	4329.08	-156.04	-1035.93	291.71	1.16	1076.21	164.27		Manual
4570	16.12	163.11	4415.12	-159.77	-1061.34	298.76	2.22	1102.59	164.28		Manual
4660	15.76	163.65	4501.66	-163.74	-1085.02	305.83	0.43	1127.3	164.26		Manual
4749	15.57	163.44	4587.35	-167.52	-1108.07	312.64	0.22	1151.33	164.24		Manual
4839	16.19	162.96	4673.92	-171.55	-1131.64	319.76	0.7	1175.95	164.22		Manual
4928	18.17	164.94	4758.94	-175.48	-1156.91	327	2.32	1202.23	164.22		Manual
5018	15.41	165.28	4845.1	-178.88	-1182.03	333.69	3.07	1228.23	164.24		Manual
5107	13.38	162.54	4931.3	-182.19	-1203.29	339.78	2.41	1250.34	164.23		Manual
5197	12.38	163.35	5019.04	-185.56	-1222.47	345.67	1.13	1270.4	164.21		Manual
5287	11.2	166.06	5107.14	-188.11	-1240.2	350.54	1.45	1288.78	164.22		Manual
5377	8.38	159.67	5195.82	-190.58	-1254.83	354.93	3.35	1304.06	164.21		Manual
5467	7.16	155.43	5284.99	-193.71	-1266.08	359.54	1.5	1316.14	164.15		Manual
5556	3.78	141.59	5373.58	-196.86	-1273.43	363.67	4.05	1324.34	164.06		Manual
5646	0.73	79.33	5463.5	-198.96	-1275.65	366.08	3.89	1327.14	163.99		Manual
5735	0.13	53.76	5552.5	-199.61	-1275.48	366.71	0.69	1327.15	163.96		Manual
5825	0.18	79.39	5642.5	-199.84	-1275.4	366.94	0.09	1327.13	163.95		Manual
5915	0.16	66.02	5732.5	-200.11	-1275.32	367.19	0.05	1327.13	163.94		Manual
6005	2.09	269.1	5822.48	-198.59	-1275.29	365.66	2.49	1326.68	164		Manual
6095	11.59	268.43	5911.74	-187.95	-1275.57	354.96	10.56	1324.04	164.45		Manual
6185	12.12	272.27	5999.62	-165.25	-1275.72	281.2	7.22	1212.12	165.42		Manual


6185	18.13	270.37	5998.68	-165.05	-1275.73	331.9	7.29	1318.19	165.42	Manual
6274	23.64	271.33	6081.8	-133.67	-1275.22	300.18	6.2	1310.08	166.75	Manual
6364	28.71	270.74	6162.55	-94.41	-1274.52	260.5	5.64	1300.87	168.45	Manual
6454	34.86	272.97	6239.02	-47.66	-1272.91	213.16	6.96	1290.63	170.49	Manual
6544	43.45	276.03	6308.75	7.85	-1268.32	156.58	9.78	1277.95	172.96	Manual
6634	53.4	276.38	6368.4	73.21	-1261.03	89.73	11.06	1264.22	175.93	Manual
6723	60.46	272.94	6416.94	146.1	-1255.07	15.46	8.57	1255.16	179.29	Manual
6813	68.68	269.78	6455.56	226.37	-1253.22	-65.72	9.67	1254.94	183	Manual
6902	73.16	265.58	6484.66	310.11	-1256.66	-149.71	6.72	1265.55	186.79	Manual
6992	76.44	263.93	6508.25	396.88	-1264.61	-236.19	4.05	1286.48	190.58	Manual
7082	81.9	265.84	6525.16	485.17	-1272.47	-324.2	6.41	1313.12	194.29	Manual
7171	87.14	267.58	6533.66	573.5	-1277.55	-412.61	6.2	1342.53	197.9	Manual
7260	90.95	267.65	6535.14	662.13	-1281.25	-501.5	4.28	1375.91	201.38	Manual
7350	88.19	268.43	6535.82	751.72	-1284.33	-591.44	3.19	1413.97	204.73	Manual
7440	89.77	270.56	6537.42	841.05	-1285.12	-681.41	2.95	1454.6	207.93	Manual
7530	89.82	270.54	6537.74	930.18	-1284.26	-771.41	0.06	1498.13	210.99	Manual
7619	89.38	269.38	6538.36	1018.45	-1284.32	-860.4	1.39	1545.89	213.82	Manual
7709	89.73	270.45	6539.06	1107.71	-1284.46	-950.4	1.25	1597.84	216.5	Manual
7798	89.22	268.8	6539.88	1196.04	-1285.04	-1039.39	1.94	1652.77	218.97	Manual
7888	89.52	269.52	6540.87	1285.45	-1286.36	-1129.37	0.87	1711.78	221.28	Manual
7977	89.68	270.54	6541.49	1373.7	-1286.31	-1218.37	1.16	1771.73	223.45	Manual
8066	89.78	270.81	6541.91	1461.82	-1285.26	-1307.36	0.32	1833.33	225.49	Manual
8157	89.63	270.7	6542.37	1551.9	-1284.06	-1398.35	0.2	1898.48	227.44	Manual
8246	89.93	270.87	6542.72	1639.99	-1282.84	-1487.35	0.39	1964.15	229.22	Manual
8336	89.26	269.28	6543.35	1729.23	-1282.73	-1577.34	1.92	2033.07	230.88	Manual
8426	89.13	269.92	6544.62	1818.55	-1283.35	-1667.33	0.73	2104.04	232.41	Manual
8516	88.46	269.94	6546.51	1907.79	-1283.46	-1757.31	0.74	2176.1	233.86	Manual
8606	89.04	270.54	6548.47	1996.97	-1283.09	-1847.28	0.93	2249.17	235.22	Manual
8696	89.01	270.24	6550	2086.13	-1282.48	-1937.27	0.33	2323.31	236.5	Manual
8785	88.63	269.02	6551.84	2174.45	-1283.05	-2026.25	1.44	2398.31	237.66	Manual
8874	89.09	270.51	6553.61	2262.73	-1283.41	-2115.23	1.75	2474.13	238.75	Manual
8964	89.33	270.75	6554.85	2351.84	-1282.42	-2205.21	0.38	2550.99	239.82	Manual
9054	89.01	269.66	6556.15	2441.04	-1282.1	-2295.2	1.26	2629.02	240.81	Manual
9144	89.28	270.2	6557.5	2530.3	-1282.21	-2385.19	0.67	2707.99	241.74	Manual
9233	88.47	269.51	6559.24	2618.57	-1282.44	-2474.17	1.2	2786.78	242.6	Manual
9323	89.28	270	6561.01	2707.85	-1282.82	-2564.15	1.05	2867.14	243.42	Manual
9413	89.15	270.52	6562.24	2797.04	-1282.41	-2654.14	0.6	2947.72	244.21	Manual
9503	88.91	270.39	6563.77	2886.19	-1281.7	-2744.13	0.3	3028.69	244.96	Manual
9592	89.34	270.23	6565.13	2974.37	-1281.22	-2833.11	0.52	3109.35	245.67	Manual
9682	88.98	269.54	6566.45	3063.64	-1281.4	-2923.1	0.86	3191.63	246.33	Manual
9772	89.24	270.36	6567.84	3152.89	-1281.48	-3013.09	0.96	3274.28	246.96	Manual
9861	89.45	270.93	6568.86	3241.01	-1280.48	-3102.08	0.68	3355.97	247.57	Manual
9951	88.63	269.47	6570.37	3330.21	-1280.16	-3192.06	1.86	3439.2	248.15	Manual
10041	89	269.93	6572.23	3419.5	-1280.63	-3282.04	0.66	3523.04	248.68	Manual
10130	88.95	270.15	6573.82	3507.74	-1280.57	-3371.03	0.25	3606.06	249.2	Manual
10219	88.76	269.45	6575.6	3596.02	-1280.88	-3460.01	0.81	3689.49	249.69	Manual
10309	88.99	269.92	6577.37	3685.32	-1281.38	-3549.99	0.58	3774.17	250.15	Manual
10489	89.75	270.53	6579.35	3863.72	-1280.67	-3729.98	0.54	3943.71	251.05	Manual
10578	89.78	270.96	6579.71	3951.82	-1279.51	-3818.97	0.48	4027.61	251.48	Manual
10667	89.25	270.1	6580.46	4039.97	-1278.69	-3907.96	1.14	4111.84	251.88	Manual

10757	89.48	270.05	6581.46	4129.2	-1278.57	-3997.95	0.26	4197.43	252.27	Manual
10847	89.72	270.5	6582.09	4218.39	-1278.14	-4087.95	0.57	4283.1	252.64	Manual
10936	89.84	270.21	6582.43	4306.58	-1277.59	-4176.95	0.35	4367.97	252.99	Manual
11026	89.83	269.77	6582.69	4395.83	-1277.6	-4266.95	0.49	4454.11	253.33	Manual
11116	89.44	269.79	6583.26	4485.13	-1277.95	-4356.94	0.43	4540.5	253.65	Manual
11206	89.51	269.75	6584.09	4574.42	-1278.31	-4446.94	0.09	4627.02	253.96	Manual
11296	89.34	269.81	6584.99	4663.71	-1278.65	-4536.93	0.2	4713.68	254.26	Manual
11386	89.2	268.99	6586.14	4753.07	-1279.6	-4626.92	0.92	4800.6	254.54	Manual
11476	89.74	270.6	6586.97	4842.36	-1279.92	-4716.91	1.89	4887.48	254.82	Manual
11566	89.38	269.54	6587.66	4931.59	-1279.81	-4806.91	1.24	4974.36	255.09	Manual
11655	89.64	270.07	6588.42	5019.89	-1280.11	-4895.91	0.66	5060.49	255.35	Manual
11745	89.96	271.12	6588.74	5109.02	-1279.18	-4985.9	1.22	5147.38	255.61	Manual
11834	89.79	270.93	6588.93	5197.06	-1277.59	-5074.88	0.29	5233.23	255.87	Manual
11924	89.7	270.09	6589.33	5286.2	-1276.78	-5164.88	0.94	5320.35	256.11	Manual
12013	89.72	269.26	6589.78	5374.52	-1277.29	-5253.88	0.93	5406.91	256.34	Manual
12102	89.32	269.62	6590.53	5462.89	-1278.16	-5342.87	0.6	5493.63	256.55	Manual
12191	89.31	269.74	6591.59	5551.21	-1278.66	-5431.86	0.14	5580.33	256.75	Manual
12281	88.86	269.17	6593.03	5640.55	-1279.51	-5521.84	0.81	5668.15	256.95	Manual
12370	88.9	268.82	6594.77	5728.98	-1281.07	-5610.81	0.4	5755.2	257.14	Manual
12461	89.14	270.2	6596.33	5819.31	-1281.85	-5701.79	1.54	5844.11	257.33	Manual
12550	89.35	270.27	6597.5	5907.51	-1281.49	-5790.79	0.25	5930.89	257.52	Manual
12639	88.73	268.52	6598.99	5995.87	-1282.43	-5879.76	2.09	6017.99	257.7	Manual
12729	88.91	268.86	6600.84	6085.35	-1284.48	-5969.72	0.43	6106.35	257.86	Manual
12819	89.12	268.98	6602.39	6174.79	-1286.18	-6059.69	0.27	6194.69	258.02	Manual
12908	89.23	269.9	6603.67	6263.15	-1287.05	-6148.68	1.04	6281.94	258.18	Manual
12997	89.3	269.77	6604.81	6351.43	-1287.3	-6237.67	0.17	6369.12	258.34	Manual
13087	89.37	269.16	6605.86	6440.78	-1288.14	-6327.66	0.68	6457.45	258.49	Manual
13177	89.18	270.07	6607	6530.1	-1288.75	-6417.65	1.03	6545.77	258.65	Manual
13266	89.09	269.03	6608.34	6618.44	-1289.45	-6506.64	1.17	6633.17	258.79	Manual
13356	88.72	269.03	6610.06	6707.86	-1290.97	-6596.61	0.41	6721.74	258.93	Manual
13446	89.41	270.06	6611.53	6797.19	-1291.69	-6686.59	1.38	6810.21	259.07	Manual
13536	89.28	269.38	6612.56	6886.49	-1292.13	-6776.58	0.77	6898.67	259.2	Manual
13625	89.39	269.48	6613.59	6974.85	-1293.01	-6865.57	0.17	6986.27	259.33	Manual
13714	89.29	268.82	6614.62	7063.27	-1294.33	-6954.56	0.75	7073.98	259.46	Manual
13804	90.64	270.46	6614.67	7152.59	-1294.9	-7044.55	2.36	7162.57	259.58	Manual
13894	91.16	269.28	6613.26	7241.85	-1295.1	-7134.54	1.43	7251.13	259.71	Manual
13984	91.4	269.94	6611.25	7331.16	-1295.71	-7224.51	0.78	7339.78	259.83	Manual
14074	91	269	6609.36	7420.49	-1296.55	-7314.49	1.13	7428.51	259.95	Manual
14163	91.13	269.21	6607.71	7508.91	-1297.94	-7403.46	0.28	7516.37	260.06	Manual
14253	91.11	269.99	6605.95	7598.22	-1298.56	-7493.44	0.87	7605.12	260.17	Manual
14342	91.23	270.05	6604.13	7686.46	-1298.53	-7582.42	0.15	7692.81	260.28	Manual
14432	91.05	268.67	6602.34	7775.81	-1299.54	-7672.39	1.55	7781.67	260.39	Manual
14521	90.85	269.39	6600.87	7864.24	-1301.04	-7761.37	0.84	7869.66	260.48	Manual
14611	91.53	270.49	6599	7953.49	-1301.14	-7851.35	1.44	7958.43	260.59	Manual
14701	91.24	269.44	6596.82	8042.72	-1301.19	-7941.32	1.21	8047.22	260.69	Manual
14791	90.71	269.57	6595.29	8132.06	-1301.97	-8031.3	0.61	8136.15	260.79	Manual
14881	91.42	269.92	6593.62	8221.34	-1302.37	-8121.29	0.88	8225.05	260.89	Manual
14971	91.36	270.16	6591.43	8310.56	-1302.31	-8211.26	0.27	8313.89	260.99	Manual
15061	90.75	268.84	6589.78	8399.89	-1303.09	-8301.24	1.62	8402.89	261.08	Manual
15150	91.21	269.84	6588.25	8488.27	-1304.12	-8390.22	1.24	8490.97	261.17	Manual

15240	91.13	269.03	6586.42	8577.61	-1305.01	-8480.19	0.9	8580.02	261.25	Manual
15330	90.84	268.98	6584.87	8667.03	-1306.57	-8570.17	0.33	8669.19	261.33	Manual
15420	90.99	269.97	6583.43	8756.38	-1307.39	-8660.15	1.11	8758.28	261.42	Manual
15510	91.3	269.08	6581.63	8845.7	-1308.14	-8750.13	1.05	8847.37	261.5	Manual
15600	91.39	270.08	6579.52	8935.01	-1308.8	-8840.1	1.12	8936.46	261.58	Manual
15690	91.01	269.54	6577.64	9024.28	-1309.1	-8930.08	0.73	9025.52	261.66	Manual
15780	91.31	269.35	6575.81	9113.62	-1309.97	-9020.06	0.39	9114.68	261.74	Manual
15869	91.46	269.42	6573.66	9201.98	-1310.92	-9109.03	0.19	9202.87	261.81	Manual
15959	91.09	269.06	6571.66	9291.35	-1312.12	-9199	0.57	9292.1	261.88	Manual
16049	91.12	270	6569.92	9380.68	-1312.86	-9288.97	1.04	9381.29	261.96	Manual
16138	91.42	270.21	6567.95	9468.9	-1312.69	-9377.95	0.41	9469.38	262.03	Manual
16227	90.89	269.27	6566.16	9557.19	-1313.1	-9466.93	1.21	9557.56	262.1	Manual
16317	91.08	269.8	6564.61	9646.52	-1313.83	-9556.92	0.63	9646.8	262.17	Manual
16407	91.5	270.64	6562.58	9735.7	-1313.48	-9646.89	1.04	9735.9	262.25	Manual
16496	91.07	269.2	6560.59	9823.96	-1313.61	-9735.87	1.69	9824.08	262.32	Manual
16585	91.1	269.53	6558.9	9912.32	-1314.59	-9824.84	0.37	9912.4	262.38	Manual
16675	90.96	268.76	6557.29	10001.72	-1315.93	-9914.82	0.87	10001.77	262.44	Manual
16765	90.72	268.36	6555.97	10091.23	-1318.2	-10004.78	0.52	10091.25	262.49	Manual
16805	90.84	268.56	6555.42	10131.02	-1319.27	-10044.76	0.58	10131.03	262.52	Manual
16827	90.84	268.56	6555.1	10152.89	-1319.82	-10066.75	0	10152.9	262.53	Manual

Company:
Well:
Field Name:
Country Name:
State Name:
County Name:

PDC Energy Inc
Pharaoh 5N
Wattenberg
United States
Colorado
Weld



XEM GAMMA RAY
1in/100ft Measured Depth
Final Print
Recorded Mode