

Company: PDC Energy Inc												Well: Pharaoh 2C												Field Name: Wattenberg												Country Name: United States												State Name: Colorado												County Name: Weld											
<div>XEM GAMMA RAY</div> <div>1in/100ft Measured Depth</div> <div>Final Print</div> <div>Recorded Mode</div> <div>Schlumberger</div>																																																																							
Company: PDC Energy Inc																																																																							
Well: Pharaoh 2C																																																																							
Field Name: Wattenberg																																																																							
Country Name: United States																																																																							
State Name: Colorado																																																																							
County Name: Weld																																																																							
Latitude: 40°21'12.042"N												API Number: 05-123-48833																																																											
Longitude: 104°29'23.697"W												Rig Name: Ensign 142																																																											
Spud Date: 22-Oct-2020												Rig Type: Land																																																											
Log Interval: 1690.00--16845.15(ft)												Job Number: 20CCCO0559																																																											
Depth Source: Driller's Depth												Print Type: Final Print																																																											
Log Measured From: Drill Floor												Northing: 1373167.15(ft)																																																											
Drill Floor Elevation: 4621 (ft)												Easting: 3281507.21 (ft)																																																											
Ground Level Elevation: 4593(ft)												Coordinate System: NAD83 Colorado State Plane, Northern Zone, US Feet																																																											
Permanent Datum: Sea Level																																																																							

Disclaimer

THE USE OF AND RELIANCE UPON THIS RECORDED-DATA BY THE HEREIN NAMED COMPANY (AND ANY OF ITS AFFILIATES, PARTNERS, REPRESENTATIVES, AGENTS, CONSULTANTS AND EMPLOYEES) IS SUBJECT TO THE TERMS AND CONDITIONS AGREED UPON BETWEEN SCHLUMBERGER AND THE COMPANY, INCLUDING: (a) RESTRICTIONS ON USE OF THE RECORDED-DATA; (b) DISCLAIMERS AND WAIVERS OF WARRANTIES AND REPRESENTATIONS REGARDING COMPANY'S USE AND RELIANCE UPON THE RECORDED-DATA; AND (c) CUSTOMER'S FULL AND SOLE RESPONSIBILITY FOR ANY INFERENCE DRAWN OR DECISION MADE IN CONNECTION WITH THE USE OF THIS RECORDED-DATA.

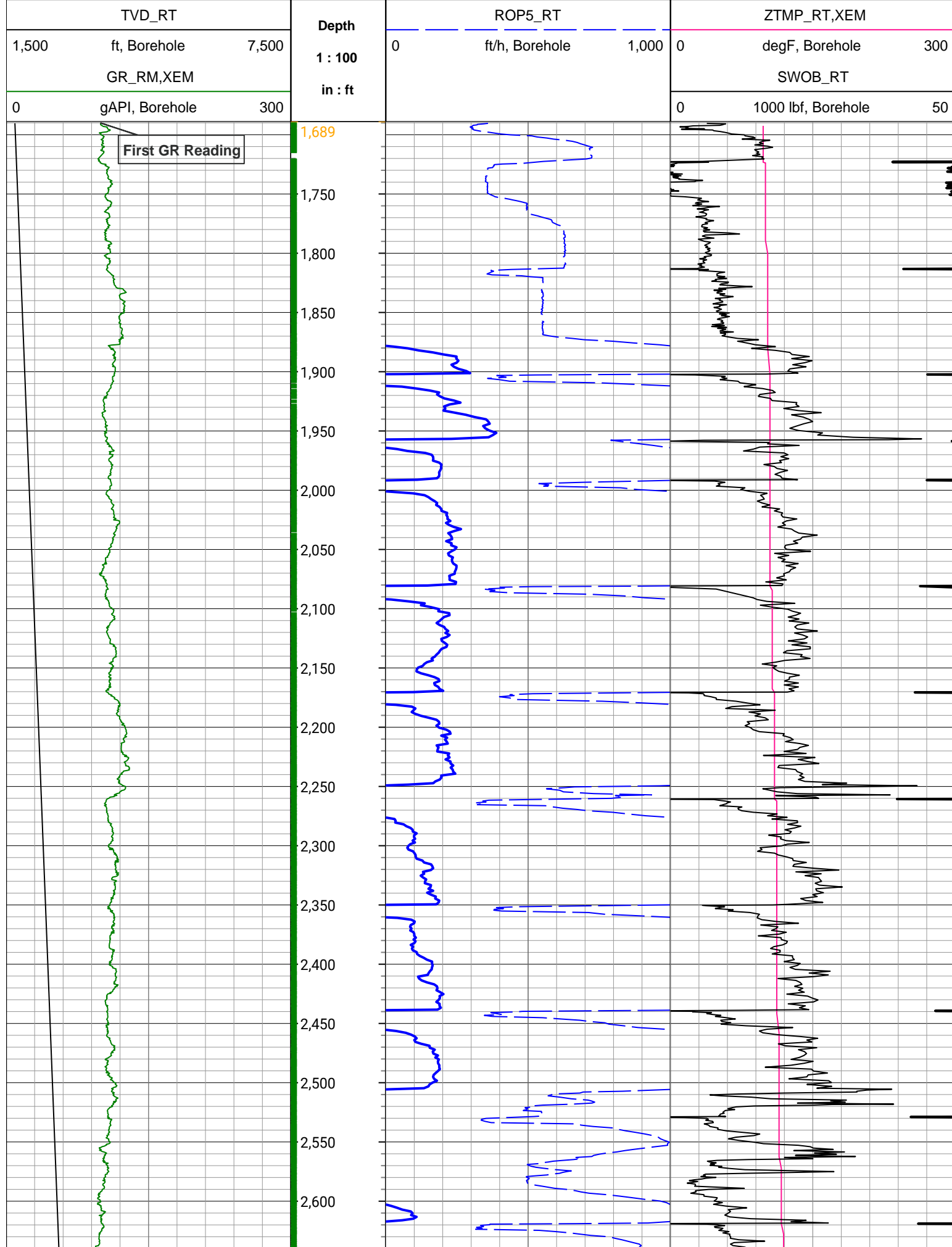
Operational Run Summary			
Notes			
Run 1 (Bit Size: 8.5 in)			
DateTime Log Started	04-Jan-2021 21:18:04	DateTime Log Finished	07-Jan-2021 17:41:11
Start Depth (ft)	1690	Stop Depth (ft)	16460
Mud Type	Oil Based Mud	Mud Density (lbm/gal)	10.2
Potassium (%)	0	Barite	Yes
GR Sensor Offset (ft)	24.57	Calibration Coefficient	0.52
DNI Sensor Offset (ft)	19.98		
Run 2 (Bit Size: 8.5 in)			
DateTime Log Started	07-Jan-2021 19:51:05	DateTime Log Finished	08-Jan-2021 13:36:10
Start Depth (ft)	16460	Stop Depth (ft)	16845
Mud Type	Oil Based Mud	Mud Density (lbm/gal)	10.2
Potassium (%)	0	Barite	Yes
GR Sensor Offset (ft)	24.51	Calibration Coefficient	0.52

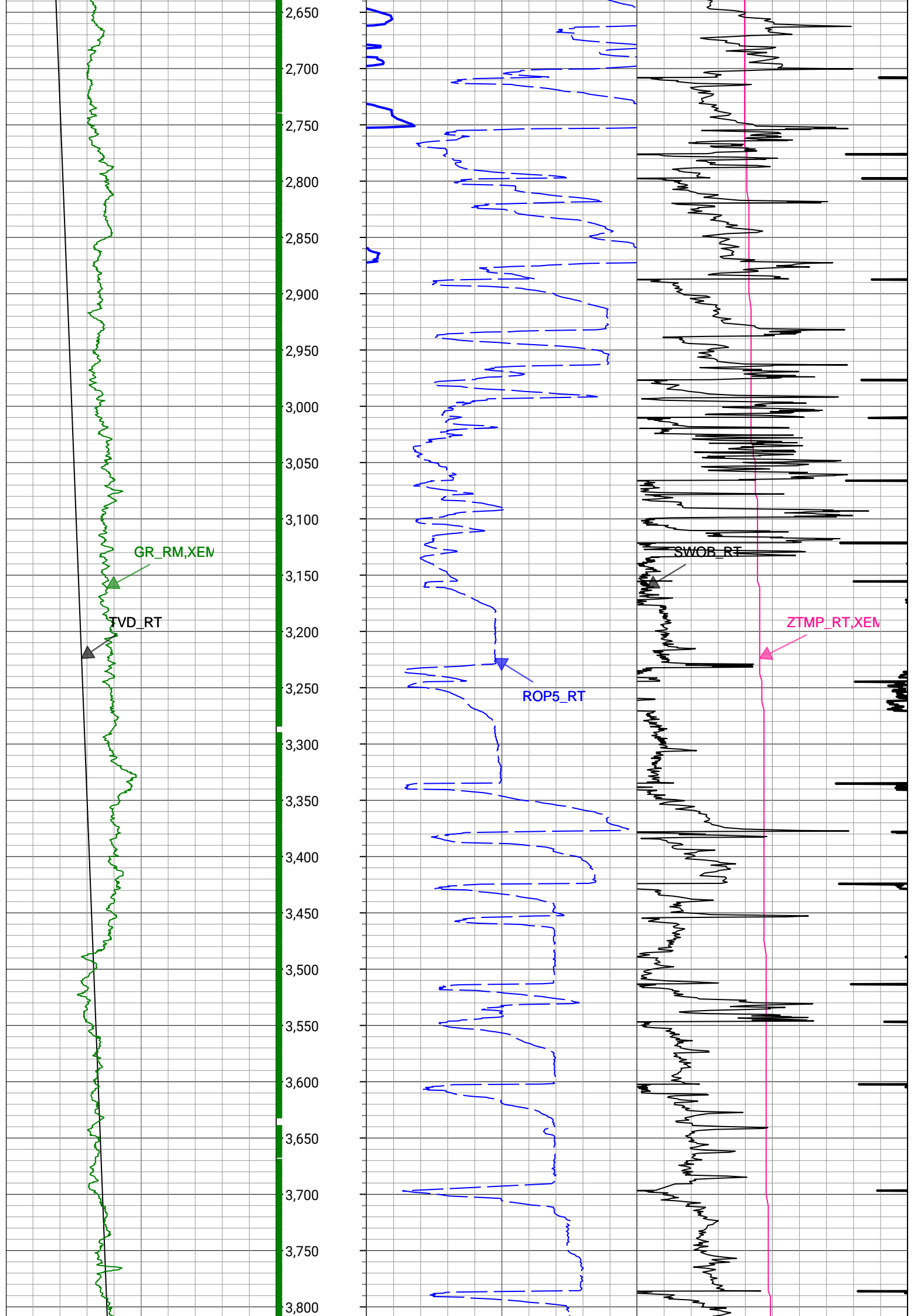
GR Sensor Offset (ft)	24.51	Calibration Coefficient	0.52
DNI Sensor Offset (ft)	19.92		

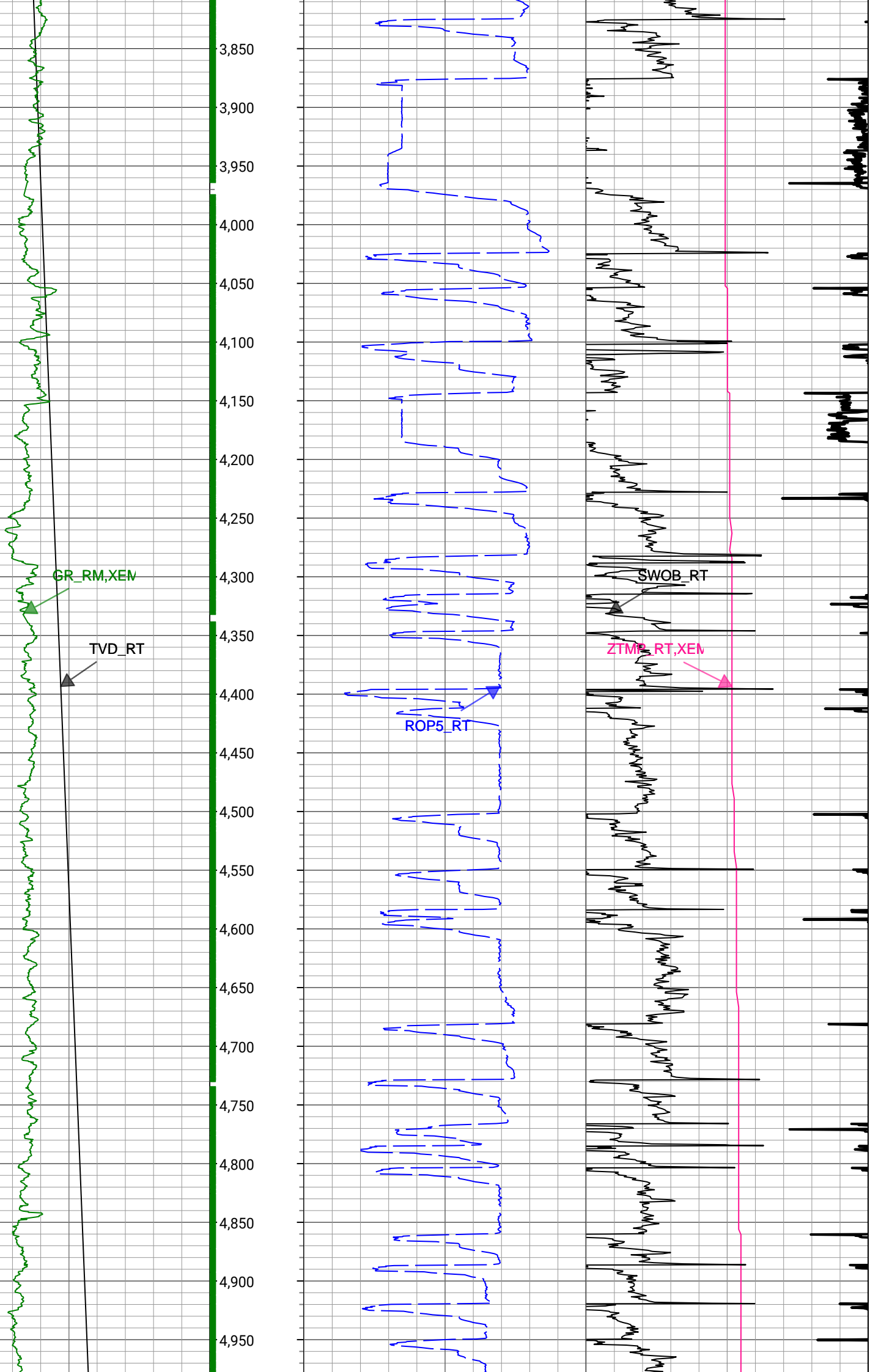
Log

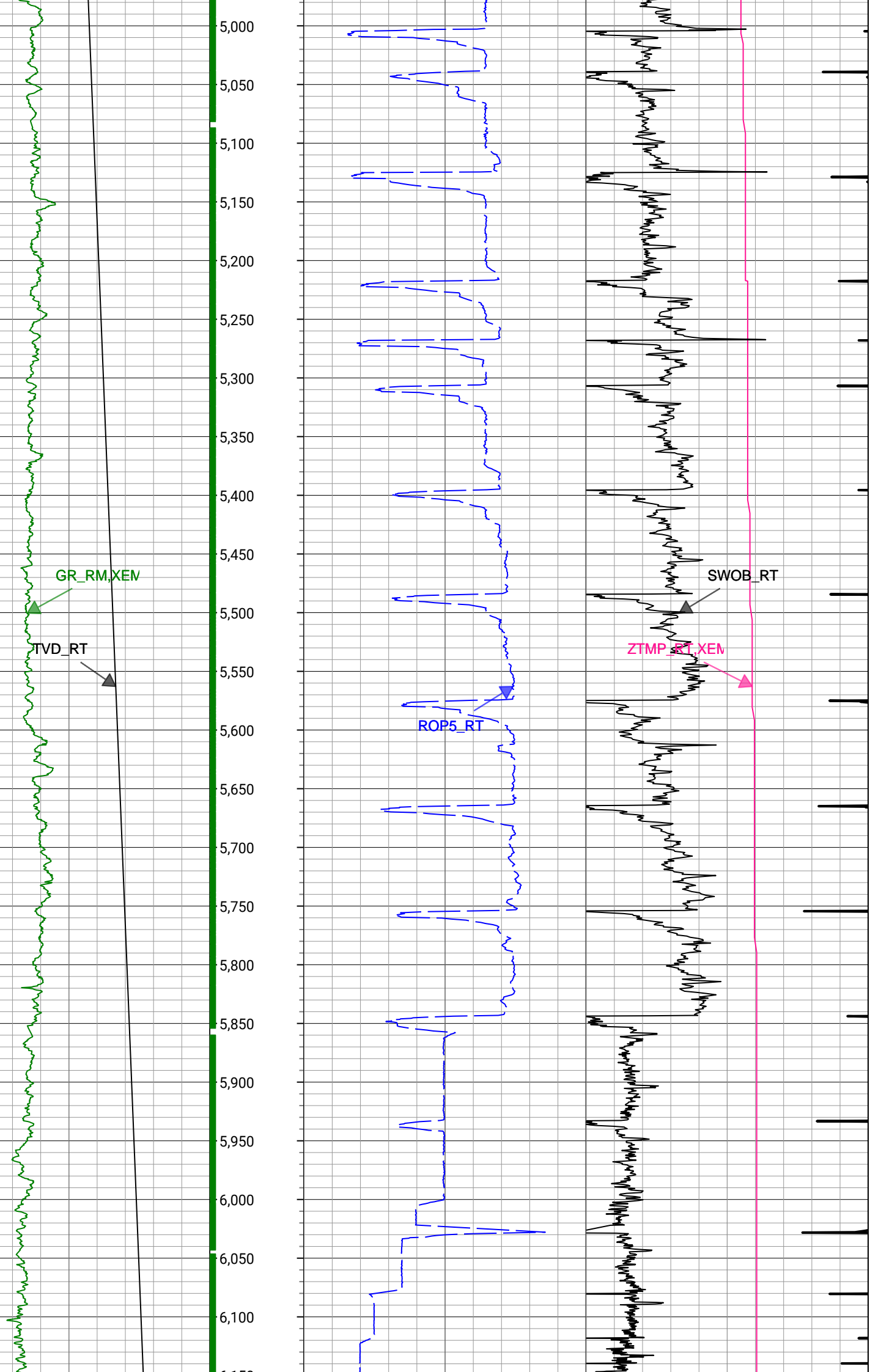
Description: XEM GAMMA RAY
 Format: XEM_GR_WOB_PDC
 Index Scale: 1in/100ft
 Index Unit: ft
 Index Type: Measured Depth

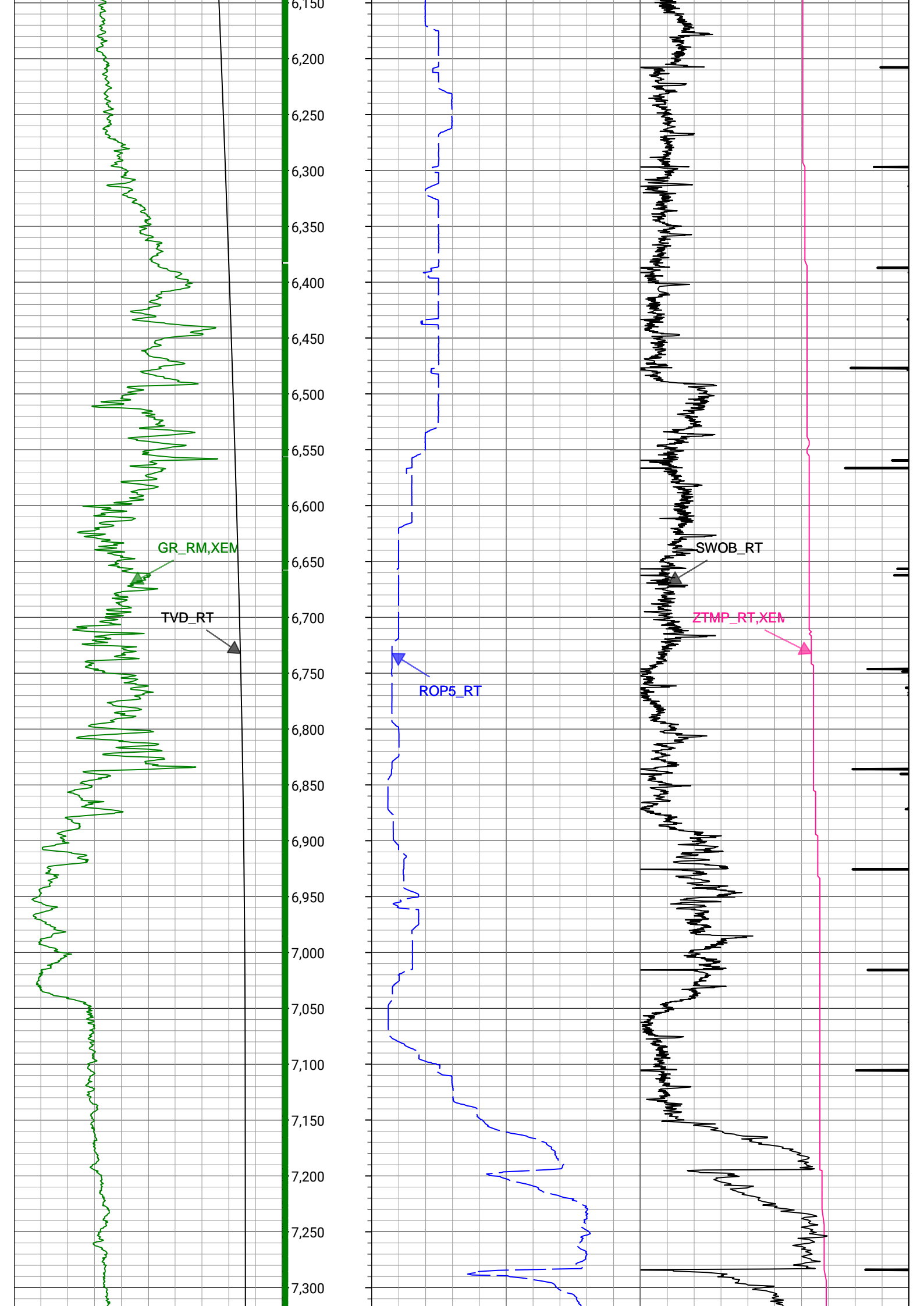
Creation Date: 11-Jan-2021

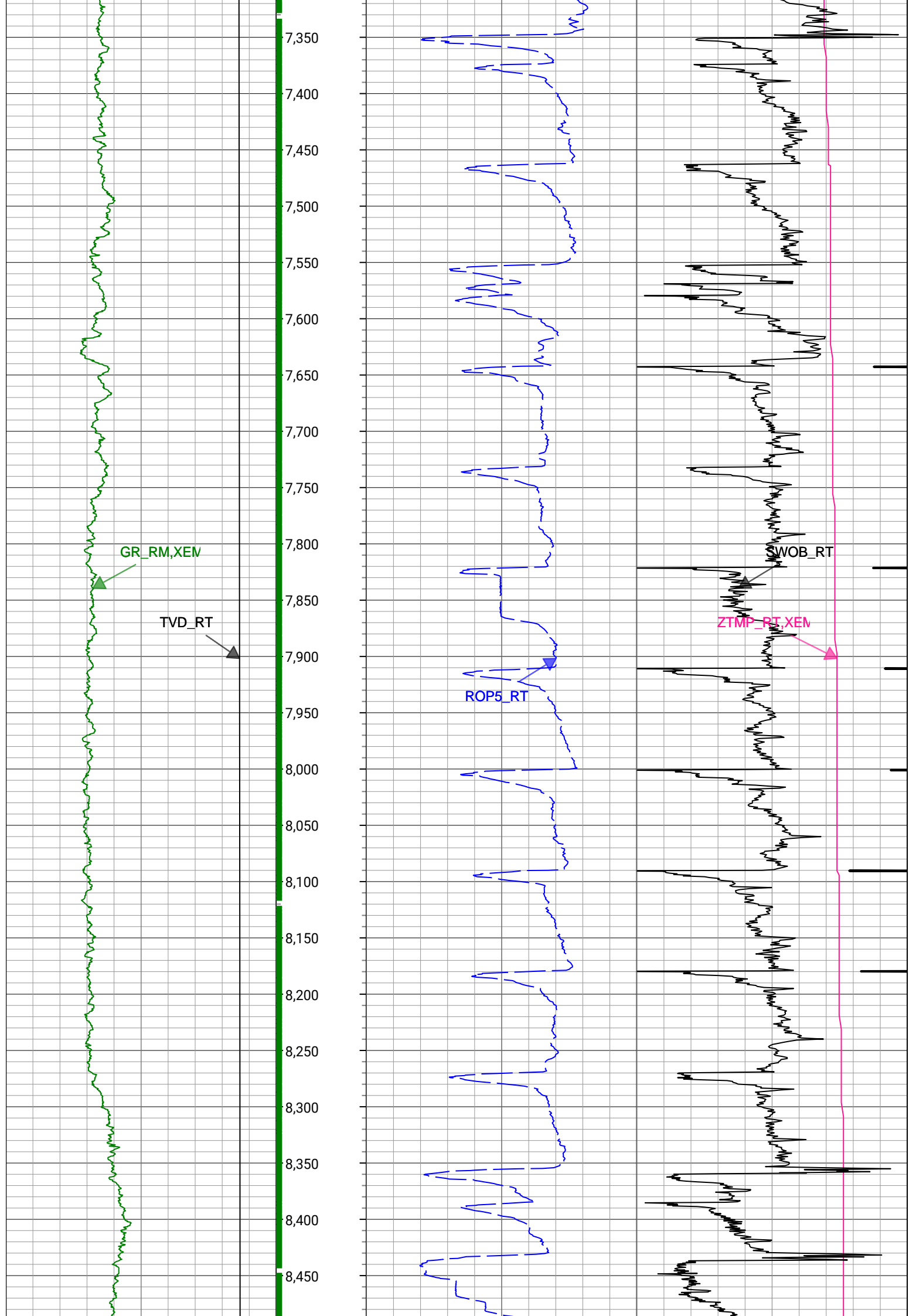


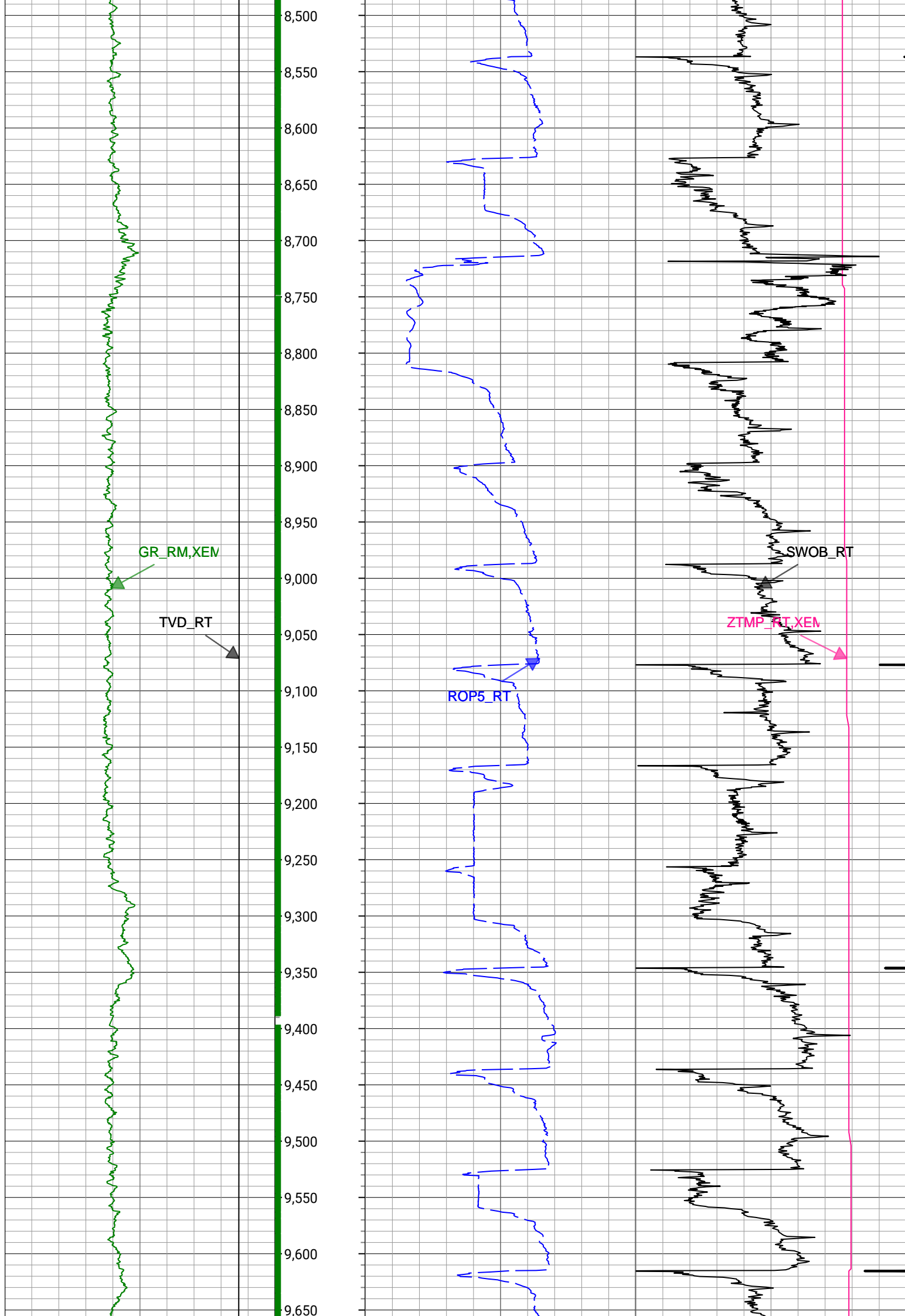


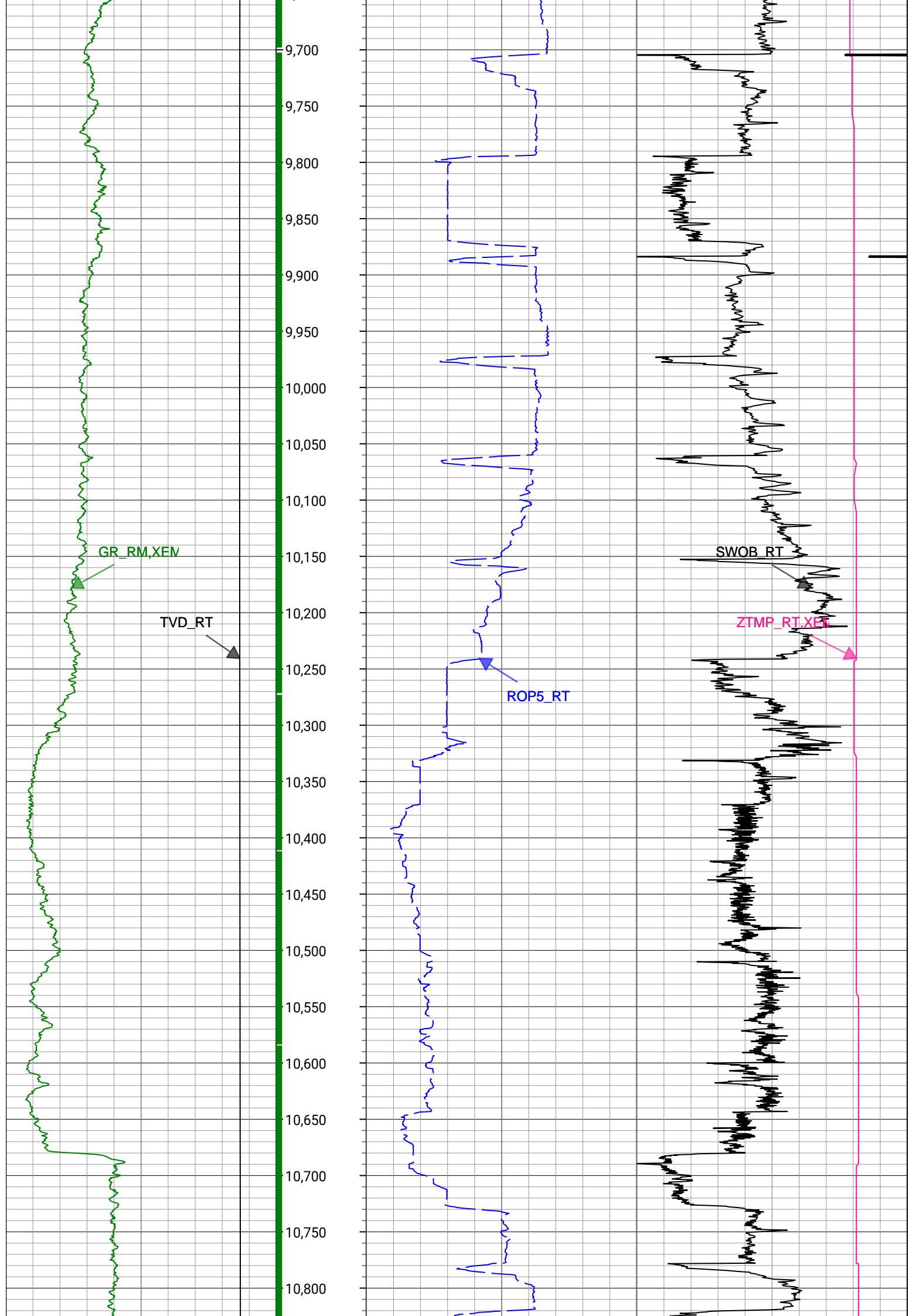


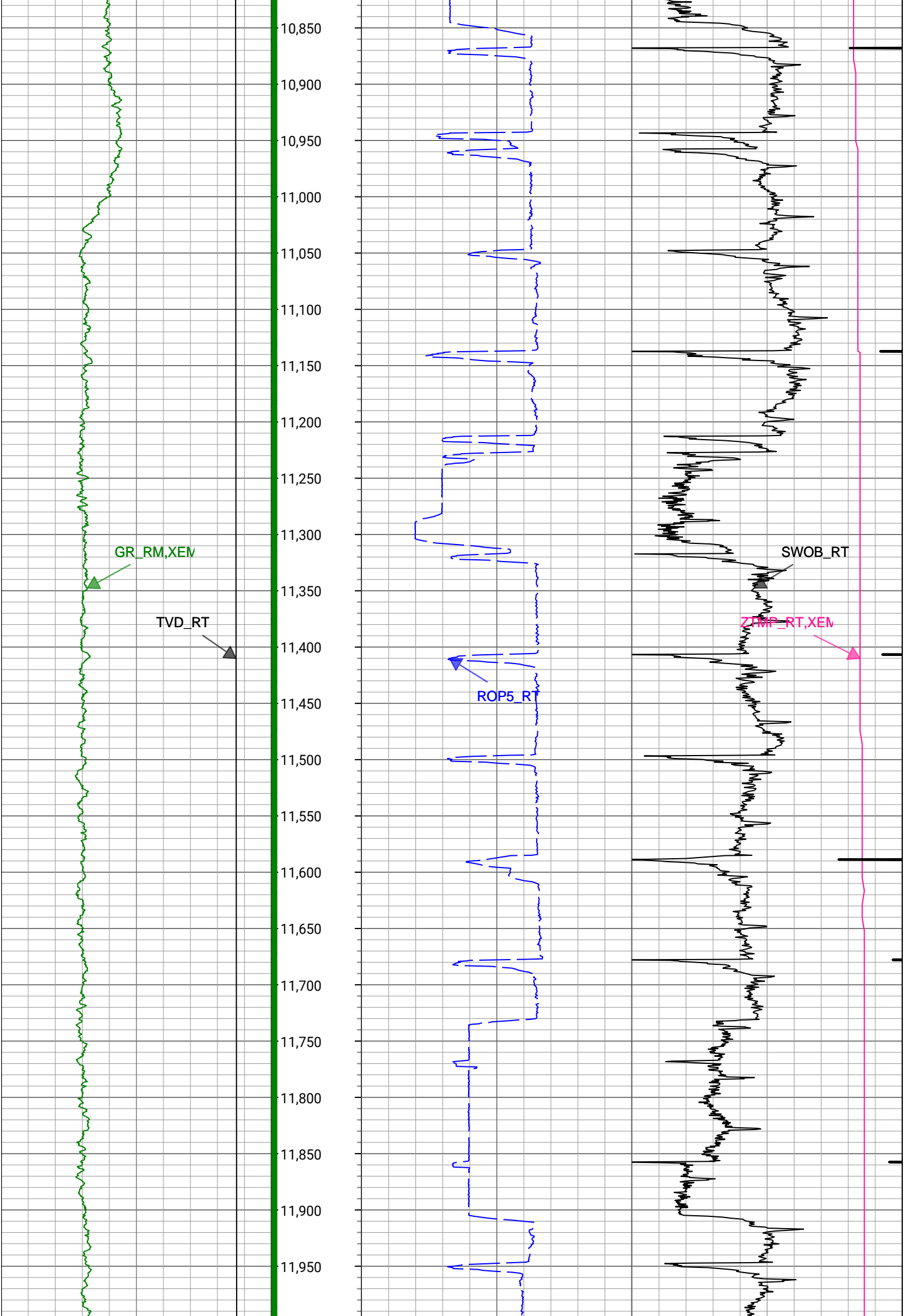


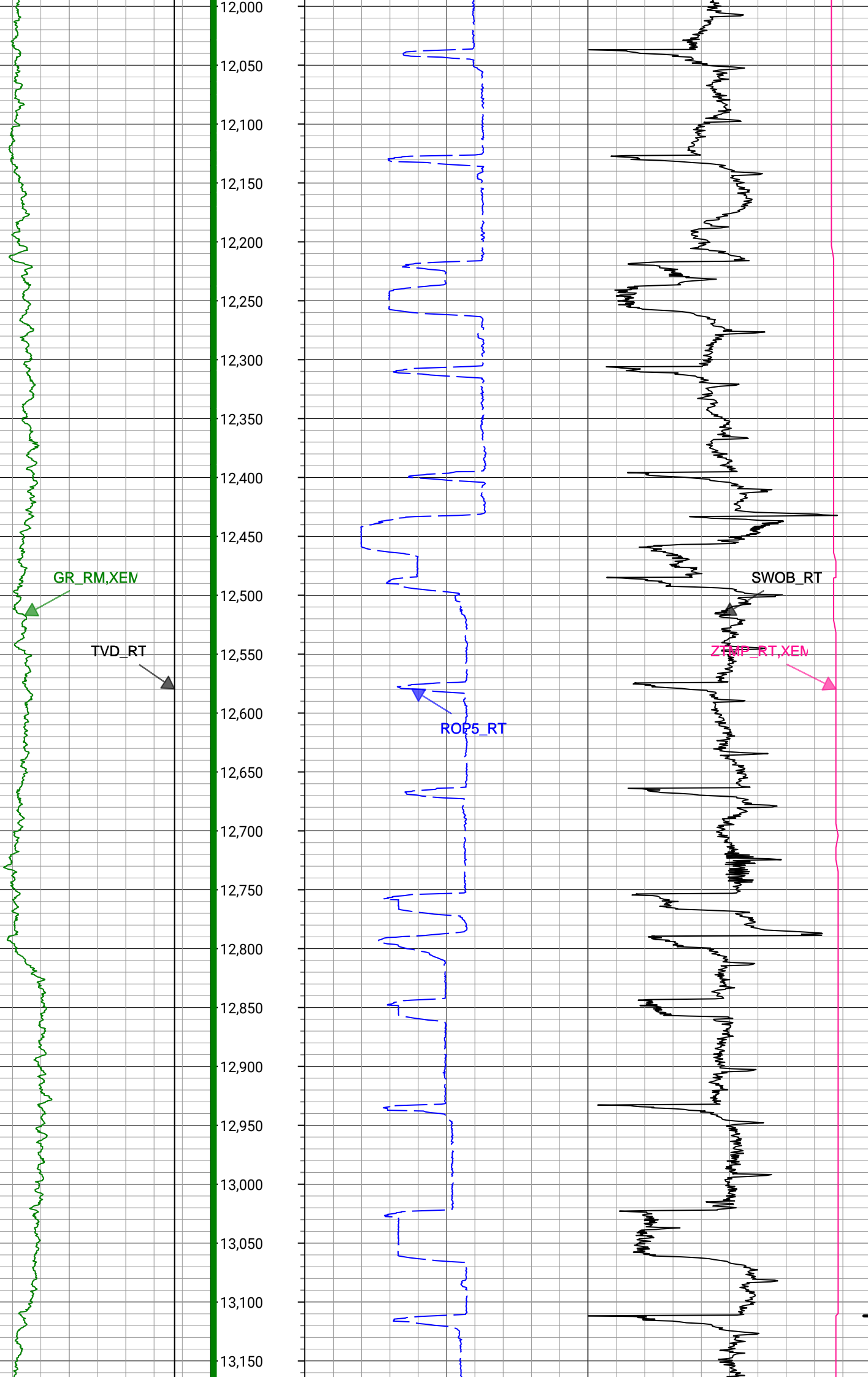


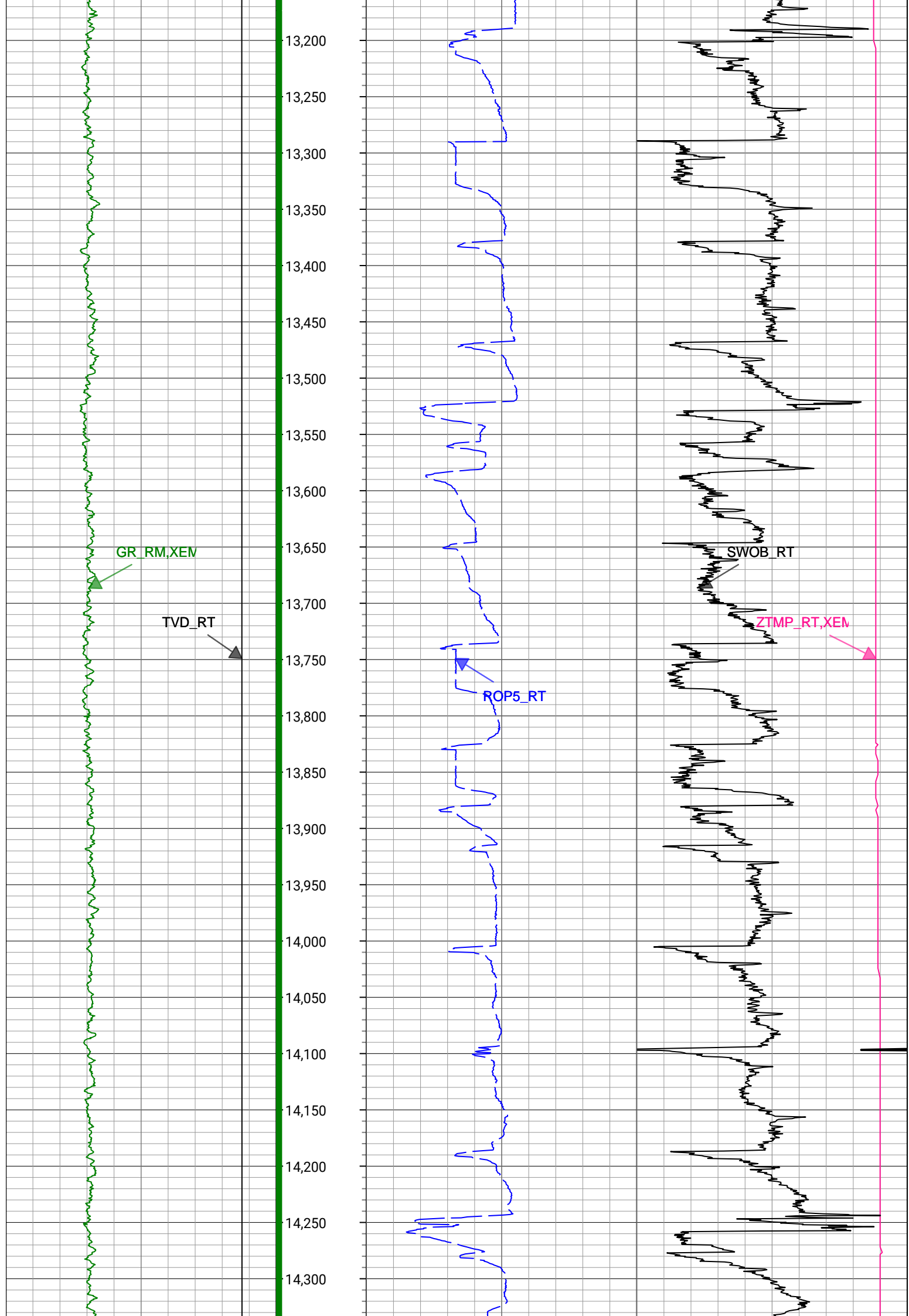


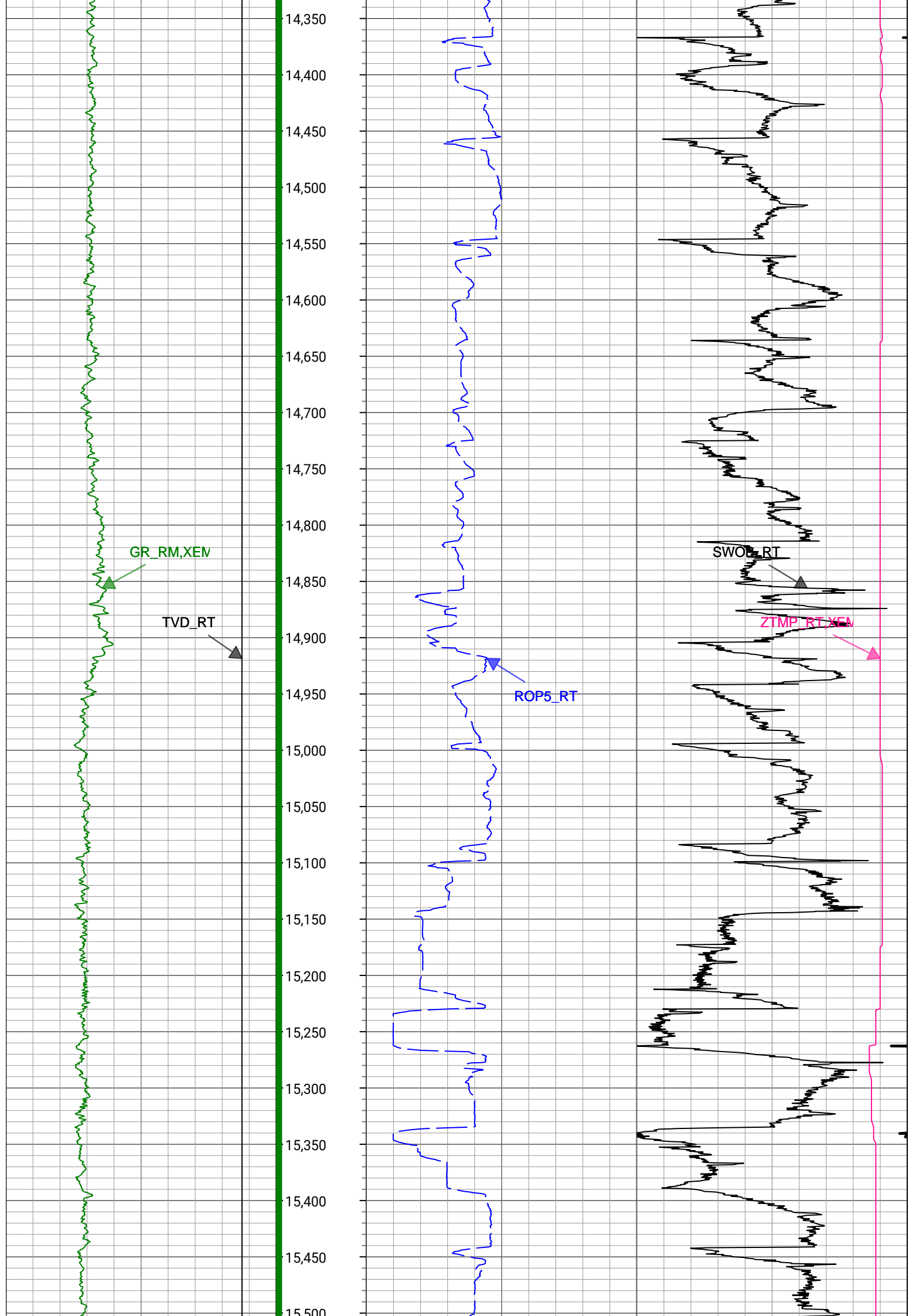


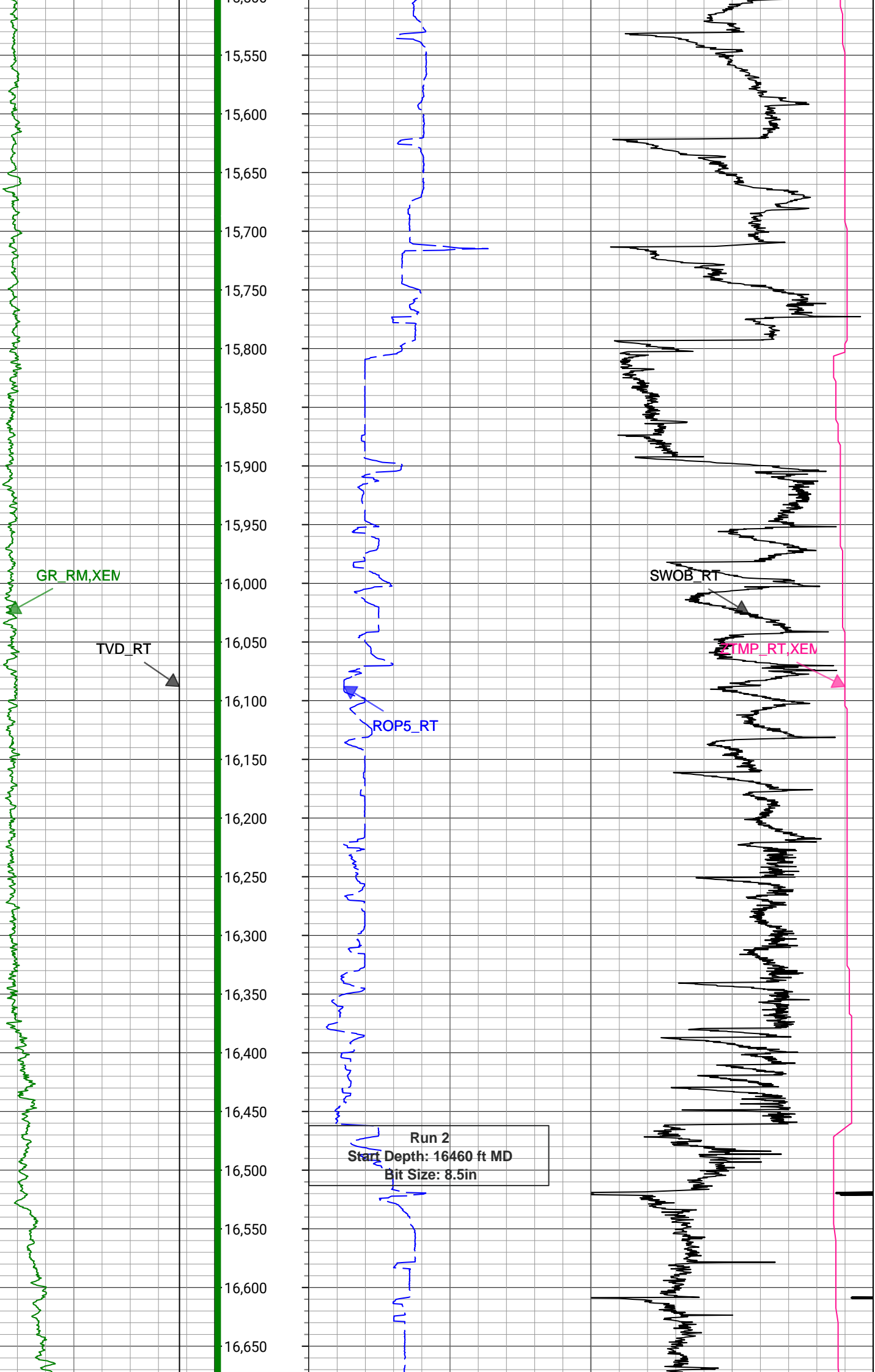


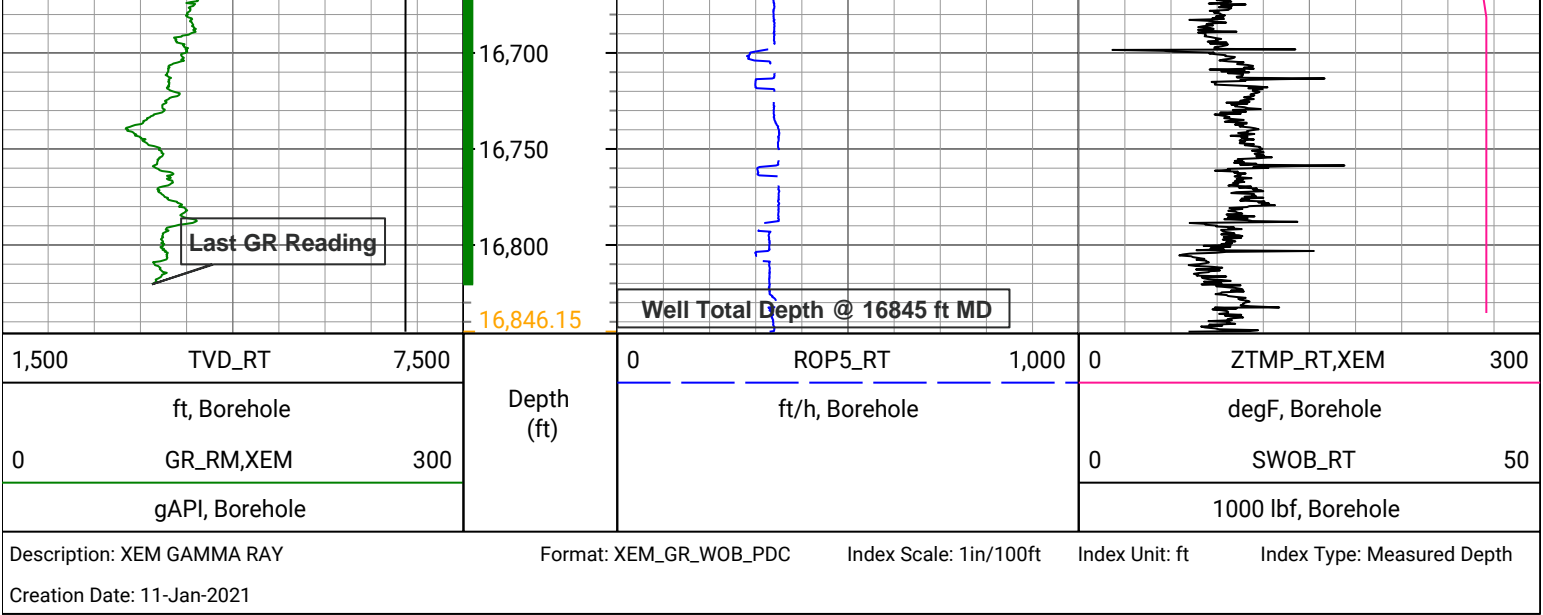












Survey Record

Survey Calculation

North Reference: True North

Tie In Point

Measured Depth:	0(ft)	Inclination:	0(deg)	Azimuth:	0(deg)
True Vertical Depth:	0(ft)	North Displacement:	0(ft)	East Displacement:	0(ft)

D&I Inits - Run - 1

Geomagnetic Model:	HDGM 2021	Geomagnetic Date:	25-Dec-2020 17:00:00
Location B:	51962(nT)	Location G:	999.049(mgn)
Magnetic Dip:	66.74(deg)	Magnetic Dec:	7.911(deg)
Total Correction:	7.911		

D&I Inits - Run - 2

Geomagnetic Model:	HDGM 2021	Geomagnetic Date:	19-Dec-2020 17:00:00
Location B:	51962(nT)	Location G:	999.049(mgn)
Magnetic Dip:	66.74(deg)	Magnetic Dec:	7.911(deg)
Total Correction:	7.911		

MD(ft)	Incl(deg)	Azim(deg)	TVD(ft)	V Sec(ft)	N/-S(ft)	E/-W(ft)	DLS (deg/100ft)	Closure Distance (ft)	Closure Azimuth (deg)	Tool Type
0	0	0	0	0.00	0	0	0.00			TIP
162	0.26	114.5	162	-0.33	-0.15	0.33	0.16	0.37	114.5	MWD
254	0.44	133.48	254	-0.76	-0.48	0.78	0.23	0.92	121.69	MWD
375	0.35	157.39	374.99	-1.2	-1.14	1.26	0.15	1.7	132.21	MWD
465	0.35	151.94	464.99	-1.41	-1.64	1.49	0.04	2.22	137.64	MWD
554	0.35	149.48	553.99	-1.66	-2.11	1.76	0.02	2.75	140.2	MWD
643	0.53	183.05	642.99	-1.74	-2.76	1.88	0.34	3.34	145.77	MWD
733	0.7	178.31	732.98	-1.69	-3.72	1.87	0.2	4.17	153.32	MWD
822	0.62	166.18	821.98	-1.77	-4.73	2	0.18	5.14	157.08	MWD
912	2.02	151.24	911.95	-2.56	-6.6	2.88	1.59	7.2	156.41	MWD
1002	3.17	137.88	1001.86	-4.83	-9.83	5.31	1.44	11.18	151.62	MWD
1091	4.92	146.32	1090.63	-8.35	-14.84	9.08	2.07	17.39	148.53	MWD
1181	5.72	140.69	1180.25	-13	-21.52	14.06	1.06	25.71	146.83	MWD
1270	7.12	142.8	1268.69	-18.76	-29.34	20.21	1.59	35.63	145.45	MWD
1359	7.83	138.93	1356.93	-25.64	-38.31	27.53	0.98	47.17	144.3	MWD
1448	7.39	127.16	1445.15	-33.78	-46.34	36.07	1.82	58.72	142.1	MWD
1538	8.58	126.2	1534.88	-43.85	-58.88	46.88	1.87	78.88	138.47	MWD

1538	8.53	126.8	1534.28	-43.36	-53.83	46.03	1.27	70.83	139.47	MWD
1618	10.46	129.26	1613.18	-53.33	-61.98	56.4	2.46	83.8	137.7	MWD
1701	10.41	129.56	1694.81	-64.47	-71.53	68.02	0.09	98.7	136.44	Manual
1791	10.34	132.28	1783.34	-76.18	-82.14	80.26	0.55	114.84	135.66	Manual
1880	10.7	137.63	1870.85	-87.09	-93.62	91.74	1.17	131.07	135.58	Manual
1970	13.35	137.76	1958.86	-99.02	-107.48	104.36	2.94	149.81	135.85	Manual
2060	13.2	136.6	2046.46	-112.32	-122.64	118.4	0.34	170.47	136.01	Manual
2149	12.95	137.06	2133.15	-125.36	-137.33	132.18	0.3	190.6	136.09	Manual
2238	13.22	137.56	2219.84	-138.29	-152.14	145.84	0.33	210.75	136.21	Manual
2328	13.06	138.61	2307.48	-151.2	-167.36	159.51	0.32	231.2	136.38	Manual
2418	13.42	136.74	2395.09	-164.33	-182.59	173.39	0.62	251.8	136.48	Manual
2508	13.38	137.77	2482.64	-177.73	-197.91	187.54	0.27	272.66	136.54	Manual
2598	13.45	137.9	2570.19	-190.97	-213.39	201.56	0.08	293.53	136.63	Manual
2687	13.22	140.72	2656.79	-203.59	-228.95	214.94	0.78	314.03	136.81	Manual
2777	13.14	138.71	2744.42	-216.08	-244.6	228.21	0.52	334.53	136.99	Manual
2867	13.74	138.28	2831.95	-229.16	-260.26	242.07	0.68	355.44	137.07	Manual
2956	13.59	137.89	2918.43	-242.43	-275.91	256.12	0.2	376.46	137.13	Manual
3046	13.06	137.62	3006.01	-255.62	-291.26	270.06	0.59	397.2	137.16	Manual
3137	13.15	139.26	3094.64	-268.54	-306.7	283.75	0.42	417.83	137.23	Manual
3227	12.78	141.02	3182.35	-280.72	-322.2	296.69	0.6	437.99	137.36	Manual
3316	12.67	140.43	3269.16	-292.37	-337.37	309.1	0.19	457.56	137.5	Manual
3406	13.53	135.35	3356.82	-305.31	-352.47	322.79	1.6	477.94	137.52	Manual
3495	13.5	137.53	3443.36	-318.9	-367.54	337.12	0.57	498.73	137.47	Manual
3584	13.32	138.28	3529.93	-331.97	-382.86	350.96	0.28	519.37	137.49	Manual
3674	13.48	136.96	3617.48	-345.27	-398.26	365.02	0.38	540.23	137.49	Manual
3763	13.66	136.58	3703.99	-358.82	-413.48	379.32	0.23	561.11	137.47	Manual
3853	13.3	136.73	3791.52	-372.46	-428.73	393.72	0.4	582.09	137.44	Manual
3943	12.54	141.2	3879.24	-384.93	-443.89	406.94	1.39	602.19	137.49	Manual
4032	8.99	138.6	3966.66	-394.95	-456.64	417.59	4.02	618.79	137.56	Manual
4122	6.97	136.58	4055.78	-402.9	-465.88	426	2.27	631.28	137.56	Manual
4211	4.41	138.24	4144.34	-408.57	-472.35	431.99	2.88	640.1	137.56	Manual
4301	0.23	275.83	4234.25	-410.57	-474.92	434.12	5.09	643.43	137.57	Manual
4391	0.14	278.11	4324.25	-410.28	-474.88	433.83	0.1	643.21	137.59	Manual
4480	0.18	216.46	4413.25	-410.09	-474.98	433.64	0.19	643.15	137.61	Manual
4570	0.19	17.83	4503.25	-410.05	-474.95	433.6	0.41	643.11	137.61	Manual
4660	0.22	340.93	4593.25	-410.06	-474.65	433.59	0.15	642.88	137.59	Manual
4749	0.11	358.5	4682.25	-410.01	-474.4	433.53	0.13	642.65	137.58	Manual
4839	0.16	349.12	4772.25	-409.99	-474.19	433.5	0.06	642.48	137.57	Manual
4928	0.11	100.49	4861.25	-410.06	-474.08	433.56	0.25	642.44	137.56	Manual
5018	0.19	145.93	4951.25	-410.22	-474.22	433.73	0.15	642.66	137.55	Manual
5108	0.2	295.05	5041.25	-410.16	-474.28	433.67	0.42	642.66	137.56	Manual
5197	0.14	132.8	5130.25	-410.1	-474.29	433.61	0.38	642.63	137.57	Manual
5287	0.16	69.49	5220.25	-410.3	-474.32	433.81	0.18	642.78	137.55	Manual
5377	0.14	71.94	5310.25	-410.52	-474.24	434.03	0.02	642.88	137.53	Manual
5467	0.15	347.55	5400.25	-410.61	-474.09	434.11	0.22	642.82	137.52	Manual
5556	0.15	39.55	5489.25	-410.67	-473.89	434.16	0.15	642.7	137.51	Manual
5646	0.15	333.53	5579.25	-410.7	-473.69	434.18	0.18	642.57	137.49	Manual
5735	0.08	170.87	5668.25	-410.66	-473.65	434.14	0.26	642.51	137.49	Manual
5825	0.2	352.14	5758.25	-410.65	-473.56	434.13	0.31	642.44	137.49	Manual
5915	0.13	193.84	5848.25	-410.61	-473.5	434.08	0.36	642.36	137.49	Manual

6005	0.21	79.32	5938.25	-410.74	-473.57	434.22	0.32	642.51	137.48	Manual
6095	6.47	286.56	6028.06	-406.12	-472.09	429.52	7.4	638.24	137.7	Manual
6185	13.58	274.15	6116.64	-390.82	-469.88	414.1	8.21	626.31	138.61	Manual
6274	20.64	265.59	6201.66	-364.73	-470.33	388	8.4	609.72	140.48	Manual
6364	28.07	265.31	6283.59	-327.66	-473.28	351.03	8.26	589.25	143.44	Manual
6454	34.91	268.07	6360.3	-280.69	-475.89	304.13	7.77	564.77	147.42	Manual
6544	40.15	270.05	6431.65	-225.92	-476.73	249.33	5.97	537.99	152.39	Manual
6634	46.2	272.11	6497.25	-164.52	-475.51	187.8	6.9	511.25	158.45	Manual
6723	54.04	273.36	6554.28	-96.6	-472.21	119.64	8.87	487.13	165.78	Manual
6813	63.14	272.59	6601.13	-20.25	-468.25	43.01	10.14	470.22	174.75	Manual
6902	73.1	272.93	6634.26	61.85	-464.27	-39.38	11.2	465.94	184.85	Manual
6992	79.25	271.46	6655.75	148.87	-460.94	-126.66	7.01	478.02	195.37	Manual
7082	87.52	271.35	6666.11	237.95	-458.75	-215.96	9.19	507.04	205.21	Manual
7171	88.86	270.72	6668.92	326.71	-457.14	-304.9	1.66	549.49	213.7	Manual
7261	88.77	270.18	6670.79	416.55	-456.44	-394.87	0.61	603.54	220.86	Manual
7350	88.59	270.46	6672.84	505.39	-455.94	-483.85	0.37	664.82	226.7	Manual
7440	88.76	270.37	6674.92	595.23	-455.29	-573.82	0.21	732.5	231.57	Manual
7530	88.82	271.02	6676.82	685.04	-454.2	-663.8	0.73	804.31	235.62	Manual
7619	88.86	271.11	6678.62	773.82	-452.54	-752.76	0.11	878.32	238.99	Manual
7709	88.82	271.25	6680.44	863.59	-450.69	-842.72	0.16	955.67	241.86	Manual
7799	88.75	270.52	6682.35	953.39	-449.3	-932.69	0.81	1035.27	244.28	Manual
7888	88.6	270.01	6684.41	1042.24	-448.89	-1021.67	0.6	1115.93	246.28	Manual
7977	88.53	269.73	6686.64	1131.11	-449.09	-1110.64	0.32	1198	247.98	Manual
8066	88.78	270.14	6688.73	1219.99	-449.19	-1199.61	0.54	1280.96	249.47	Manual
8157	89.01	270.75	6690.48	1310.83	-448.48	-1290.59	0.72	1366.3	250.84	Manual
8246	88.8	270.01	6692.18	1399.68	-447.89	-1379.58	0.86	1450.46	252.01	Manual
8336	89.35	269.61	6693.63	1489.57	-448.19	-1469.56	0.76	1536.39	253.04	Manual
8426	88.68	270.61	6695.18	1579.44	-448.02	-1559.55	1.34	1622.62	253.97	Manual
8516	88.77	269.65	6697.18	1669.3	-447.82	-1649.52	1.07	1709.23	254.81	Manual
8606	88.84	270.63	6699.06	1759.16	-447.6	-1739.5	1.09	1796.17	255.57	Manual
8696	89.15	269.89	6700.64	1849.02	-447.19	-1829.49	0.89	1883.35	256.26	Manual
8785	89.71	269.42	6701.52	1937.94	-447.72	-1918.48	0.82	1970.03	256.86	Manual
8875	90.05	269.83	6701.71	2027.86	-448.31	-2008.48	0.59	2057.9	257.42	Manual
8964	90.61	269.45	6701.2	2116.78	-448.87	-2097.47	0.76	2144.97	257.92	Manual
9054	90.66	270.32	6700.2	2206.67	-449.05	-2187.47	0.97	2233.08	258.4	Manual
9144	90.19	269.44	6699.54	2296.57	-449.24	-2277.46	1.11	2321.35	258.84	Manual
9234	90.44	269.49	6699.04	2386.5	-450.08	-2367.46	0.28	2409.86	259.24	Manual
9323	90.53	269.77	6698.29	2475.42	-450.66	-2456.45	0.33	2497.45	259.6	Manual
9413	90.99	270.24	6697.09	2565.31	-450.65	-2546.45	0.73	2586.01	259.96	Manual
9503	91.06	270.34	6695.48	2655.16	-450.19	-2636.43	0.14	2674.59	260.31	Manual
9592	91.73	269.92	6693.32	2744.02	-449.99	-2725.4	0.89	2762.3	260.62	Manual
9682	91.31	269.35	6690.93	2833.91	-450.56	-2815.37	0.79	2851.19	260.91	Manual
9772	91.35	269.49	6688.84	2923.82	-451.47	-2905.34	0.16	2940.21	261.17	Manual
9861	90.41	268.74	6687.47	3012.76	-452.85	-2994.32	1.35	3028.37	261.4	Manual
9951	90	269.34	6687.15	3102.71	-454.36	-3084.3	0.81	3117.59	261.62	Manual
10041	89.88	268.78	6687.25	3192.66	-455.83	-3174.29	0.64	3206.85	261.83	Manual
10130	89.94	269.24	6687.39	3281.62	-457.37	-3263.28	0.52	3295.17	262.02	Manual
10219	88.32	269.31	6688.74	3370.55	-458.5	-3352.26	1.82	3383.47	262.21	Manual
10309	89.5	269.32	6690.45	3460.47	-459.57	-3442.23	1.31	3472.78	262.4	Manual
10399	88.76	270.06	6691.82	3550.38	-460.06	-3532.22	1.16	3562.05	262.58	Manual

10489	88.94	270.51	6693.62	3640.23	-459.61	-3622.2	0.54	3651.24	262.77	Manual
10578	88.57	269.75	6695.56	3729.09	-459.41	-3711.18	0.95	3739.5	262.94	Manual
10668	88.16	270	6698.12	3818.96	-459.61	-3801.14	0.53	3828.83	263.11	Manual
10757	88.36	270.57	6700.83	3907.79	-459.16	-3890.1	0.68	3917.1	263.27	Manual
10847	88.31	270.41	6703.44	3997.61	-458.39	-3980.06	0.19	4006.37	263.43	Manual
10936	89.45	270.52	6705.18	4086.44	-457.67	-4069.04	1.29	4094.69	263.58	Manual
11026	89.14	270.12	6706.29	4176.31	-457.17	-4159.03	0.56	4184.08	263.73	Manual
11117	88.88	269.91	6707.86	4267.18	-457.15	-4250.01	0.37	4274.53	263.86	Manual
11206	89.32	270.63	6709.26	4356.05	-456.73	-4339	0.95	4362.97	263.99	Manual
11296	88.91	269.46	6710.65	4445.92	-456.66	-4428.99	1.38	4452.47	264.11	Manual
11386	88.55	268.57	6712.64	4535.86	-458.2	-4518.95	1.07	4542.12	264.21	Manual
11476	88.52	268.68	6714.94	4625.8	-460.36	-4608.9	0.13	4631.83	264.3	Manual
11566	89.03	269.58	6716.87	4715.73	-461.73	-4698.86	1.15	4721.49	264.39	Manual
11655	88.45	268.77	6718.83	4804.65	-463.01	-4787.83	1.12	4810.17	264.48	Manual
11745	88.64	269.55	6721.11	4894.57	-464.33	-4877.79	0.89	4899.84	264.56	Manual
11834	88.44	268.28	6723.38	4983.5	-466.01	-4966.75	1.44	4988.56	264.64	Manual
11924	89.26	270.02	6725.18	5073.43	-467.35	-5056.71	2.14	5078.26	264.72	Manual
12013	88.4	268.29	6727	5162.36	-468.66	-5145.68	2.17	5166.98	264.8	Manual
12102	88.85	269.73	6729.14	5251.28	-470.2	-5234.64	1.69	5255.71	264.87	Manual
12191	88.4	268.73	6731.27	5340.2	-471.39	-5323.6	1.23	5344.43	264.94	Manual
12282	89.04	269.36	6733.31	5431.13	-472.91	-5414.57	0.99	5435.18	265.01	Manual
12370	89.95	269.2	6734.08	5519.07	-474.01	-5502.56	1.05	5522.94	265.08	Manual
12461	90.05	269.55	6734.08	5610.01	-475.01	-5593.55	0.4	5613.68	265.15	Manual
12550	89.94	268.6	6734.09	5698.96	-476.44	-5682.54	1.07	5702.48	265.21	Manual
12639	89.86	270.09	6734.24	5787.9	-477.46	-5771.53	1.68	5791.25	265.27	Manual
12729	90.28	270.07	6734.14	5877.78	-477.33	-5861.53	0.47	5880.93	265.34	Manual
12819	89.79	268.24	6734.08	5967.73	-478.66	-5951.52	2.1	5970.73	265.4	Manual
12908	89.83	269.71	6734.38	6056.68	-480.25	-6040.5	1.65	6059.56	265.45	Manual
12998	89.81	268.68	6734.66	6146.63	-481.52	-6130.49	1.14	6149.37	265.51	Manual
13087	90.21	267.87	6734.64	6235.61	-484.2	-6219.45	1.02	6238.27	265.55	Manual
13177	90.24	269.7	6734.29	6325.57	-486.11	-6309.42	2.03	6328.12	265.59	Manual
13266	90.27	269.37	6733.89	6414.5	-486.83	-6398.42	0.37	6416.91	265.65	Manual
13356	89.9	269.43	6733.76	6504.43	-487.77	-6488.41	0.42	6506.72	265.7	Manual
13446	89.44	269.38	6734.28	6594.37	-488.7	-6578.41	0.51	6596.53	265.75	Manual
13536	89.37	268.41	6735.21	6684.32	-490.44	-6668.38	1.08	6686.39	265.79	Manual
13625	89.77	268.65	6735.88	6773.3	-492.72	-6757.35	0.52	6775.29	265.83	Manual
13715	89.73	269.72	6736.27	6863.24	-494	-6847.34	1.19	6865.14	265.87	Manual
13804	89.52	270.27	6736.86	6952.14	-494.01	-6936.34	0.66	6953.91	265.93	Manual
13894	89.92	270.32	6737.3	7042	-493.55	-7026.34	0.45	7043.65	265.98	Manual
13984	89.95	270.78	6737.4	7131.85	-492.68	-7116.33	0.51	7133.37	266.04	Manual
14074	90.07	271.56	6737.38	7221.64	-490.85	-7206.31	0.88	7223.01	266.1	Manual
14163	89.53	270.03	6737.69	7310.46	-489.61	-7295.3	1.82	7311.71	266.16	Manual
14253	89.81	271.02	6738.21	7400.31	-488.79	-7385.29	1.14	7401.45	266.21	Manual
14342	89.32	269.89	6738.89	7489.16	-488.08	-7474.29	1.38	7490.21	266.26	Manual
14432	89.68	270.86	6739.67	7579.02	-487.49	-7564.28	1.15	7579.97	266.31	Manual
14521	89.48	269.42	6740.32	7667.9	-487.27	-7653.27	1.63	7668.77	266.36	Manual
14611	89.92	270.04	6740.8	7757.81	-487.7	-7743.27	0.84	7758.61	266.4	Manual
14701	90.58	271.6	6740.4	7847.63	-486.41	-7833.26	1.88	7848.35	266.45	Manual
14791	90.62	270.76	6739.46	7937.41	-484.56	-7923.23	0.93	7938.04	266.5	Manual
14881	90.84	270.96	6738.31	8027.22	-483.21	-8013.22	0.33	8027.77	266.55	Manual

14971	91.48	271.59	6736.49	8116.98	-481.2	-8103.17	1	8117.45	266.6	Manual
15061	89.94	270.94	6735.38	8206.74	-479.22	-8193.14	1.86	8207.15	266.65	Manual
15150	88.31	268.99	6736.74	8295.62	-479.27	-8282.12	2.86	8295.98	266.69	Manual
15240	90.49	271.34	6737.68	8385.49	-479.01	-8372.11	3.56	8385.8	266.73	Manual
15330	88.82	271.18	6738.22	8475.26	-477.03	-8462.08	1.86	8475.52	266.77	Manual
15420	90.08	271.26	6739.08	8565.03	-475.12	-8552.05	1.4	8565.24	266.82	Manual
15510	90.17	270.88	6738.89	8654.83	-473.44	-8642.04	0.43	8655	266.86	Manual
15600	89.81	271.43	6738.9	8744.62	-471.62	-8732.02	0.73	8744.75	266.91	Manual
15690	89.12	271.91	6739.74	8834.34	-469	-8821.98	0.93	8834.43	266.96	Manual
15780	89.91	271.15	6740.51	8924.08	-466.6	-8911.94	1.22	8924.15	267	Manual
15870	90.25	270.14	6740.38	9013.92	-465.58	-9001.93	1.18	9013.97	267.04	Manual
15960	87.96	268.32	6741.79	9103.84	-466.79	-9091.9	3.25	9103.88	267.06	Manual
16049	90.02	269.57	6743.35	9192.78	-468.43	-9180.87	2.71	9192.81	267.08	Manual
16138	87.25	268.63	6745.47	9281.7	-469.83	-9269.82	3.29	9281.72	267.1	Manual
16227	88.88	270.16	6748.48	9370.58	-470.76	-9358.76	2.51	9370.59	267.12	Manual
16317	90.32	270.27	6749.11	9460.45	-470.43	-9448.76	1.6	9460.46	267.15	Manual
16407	90.29	269.63	6748.63	9550.35	-470.51	-9538.75	0.71	9550.35	267.18	Manual
16496	90.55	268.78	6747.98	9639.29	-471.74	-9627.74	1	9639.29	267.19	Manual
16585	90.24	270.55	6747.36	9728.21	-472.26	-9716.74	2.02	9728.21	267.22	Manual
16675	90.42	270.59	6746.84	9818.05	-471.37	-9806.73	0.2	9818.05	267.25	Manual
16765	90.2	269.07	6746.36	9907.95	-471.63	-9896.72	1.71	9907.96	267.27	Manual
16823	90.43	270.13	6746.04	9965.9	-472.04	-9954.72	1.87	9965.91	267.29	Manual
16845	90.43	270.13	6745.87	9987.87	-471.99	-9976.72	0	9987.88	267.29	Manual

Company:

Well:

Field Name:

Country Name:

State Name:

County Name:

PDC Energy Inc


Pharaoh 2C

Wattenberg

United States

Colorado

Weld



XEM GAMMA RAY

1in/100ft Measured Depth

Final Print

Recorded Mode