

Company: PDC Energy Inc		Well: Pharaoh 1N		Field Name: Wattenberg		Country Name: United States		State Name: Colorado		County Name: Weld	
<div><div>XEM GAMMA RAY</div><div>1in/100ft Measured Depth</div><div>Final Print</div><div>Recorded Mode</div></div> <div>Schlumberger</div>											
Company: PDC Energy Inc											
Well: Pharaoh 1N											
Field Name: Wattenberg											
Country Name: United States											
State Name: Colorado											
County Name: Weld											
Latitude: 40°21'12.190"N				API Number: 05-123-48835							
Longitude: 104°29'23.694"W				Rig Name: Ensign 142							
Spud Date: 20-Oct-2020				Rig Type: Land							
Log Interval: 1662.00--16751.21 (ft)				Job Number: 20CCCO0557							
Depth Source: Driller's Depth				Print Type: Final Print							
Log Measured From: Drill Floor				Northing: 1373182.10(ft)							
Drill Floor Elevation: 4621 (ft)				Easting: 3281507.32(ft)							
Ground Level Elevation: 4593(ft)				Coordinate System: NAD83 Colorado State Plane, Northern Zone, US Feet							
Permanent Datum: Sea Level											

Disclaimer
<p>THE USE OF AND RELIANCE UPON THIS RECORDED-DATA BY THE HEREIN NAMED COMPANY (AND ANY OF ITS AFFILIATES, PARTNERS, REPRESENTATIVES, AGENTS, CONSULTANTS AND EMPLOYEES) IS SUBJECT TO THE TERMS AND CONDITIONS AGREED UPON BETWEEN SCHLUMBERGER AND THE COMPANY, INCLUDING: (a) RESTRICTIONS ON USE OF THE RECORDED-DATA; (b) DISCLAIMERS AND WAIVERS OF WARRANTIES AND REPRESENTATIONS REGARDING COMPANY'S USE AND RELIANCE UPON THE RECORDED-DATA; AND (c) CUSTOMER'S FULL AND SOLE RESPONSIBILITY FOR ANY INFERENCE DRAWN OR DECISION MADE IN CONNECTION WITH THE USE OF THIS RECORDED-DATA.</p>

Operational Run Summary			
Notes			
Run 1: Missing gamma between 1677-1838 ft MD due to the tool being out of sync near casing.			
Run 1 (Bit Size: 8.5 in)			
DateTime Log Started	28-Dec-2020 03:58:50	DateTime Log Finished	29-Dec-2020 12:20:37
Start Depth (ft)	1686	Stop Depth (ft)	9432
Mud Type	Oil Based Mud	Mud Density (lbm/gal)	10.2
Potassium (%)	0	Barite	Yes
GR Sensor Offset (ft)	24.61	Calibration Coefficient	0.53
DNI Sensor Offset (ft)	20.02		
Run 2 (Bit Size: 8.5 in)			
DateTime Log Started	29-Dec-2020 12:38:52	DateTime Log Finished	31-Dec-2020 02:44:42
Start Depth (ft)	9432	Stop Depth (ft)	16751
Mud Type	Oil Based Mud	Mud Density (lbm/gal)	10.2
Potassium (%)	0	Barite	Yes

Classium (%)	0	Damc	Yes
GR Sensor Offset (ft)	24.61	Calibration Coefficient	0.53
DNI Sensor Offset (ft)	20.02		

Log

Description: XEM GAMMA RAY

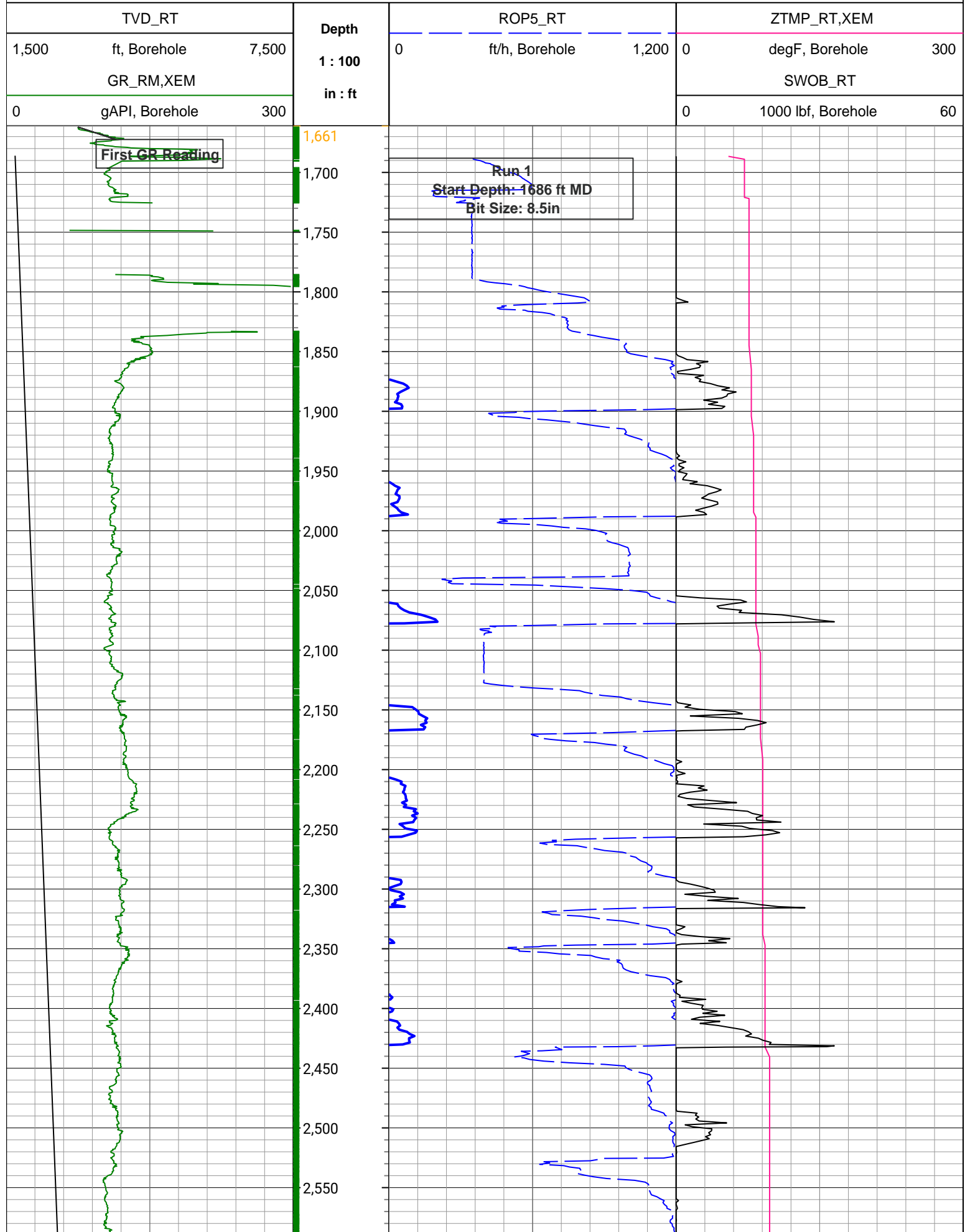
Format: XEM_GR_WOB_PDC

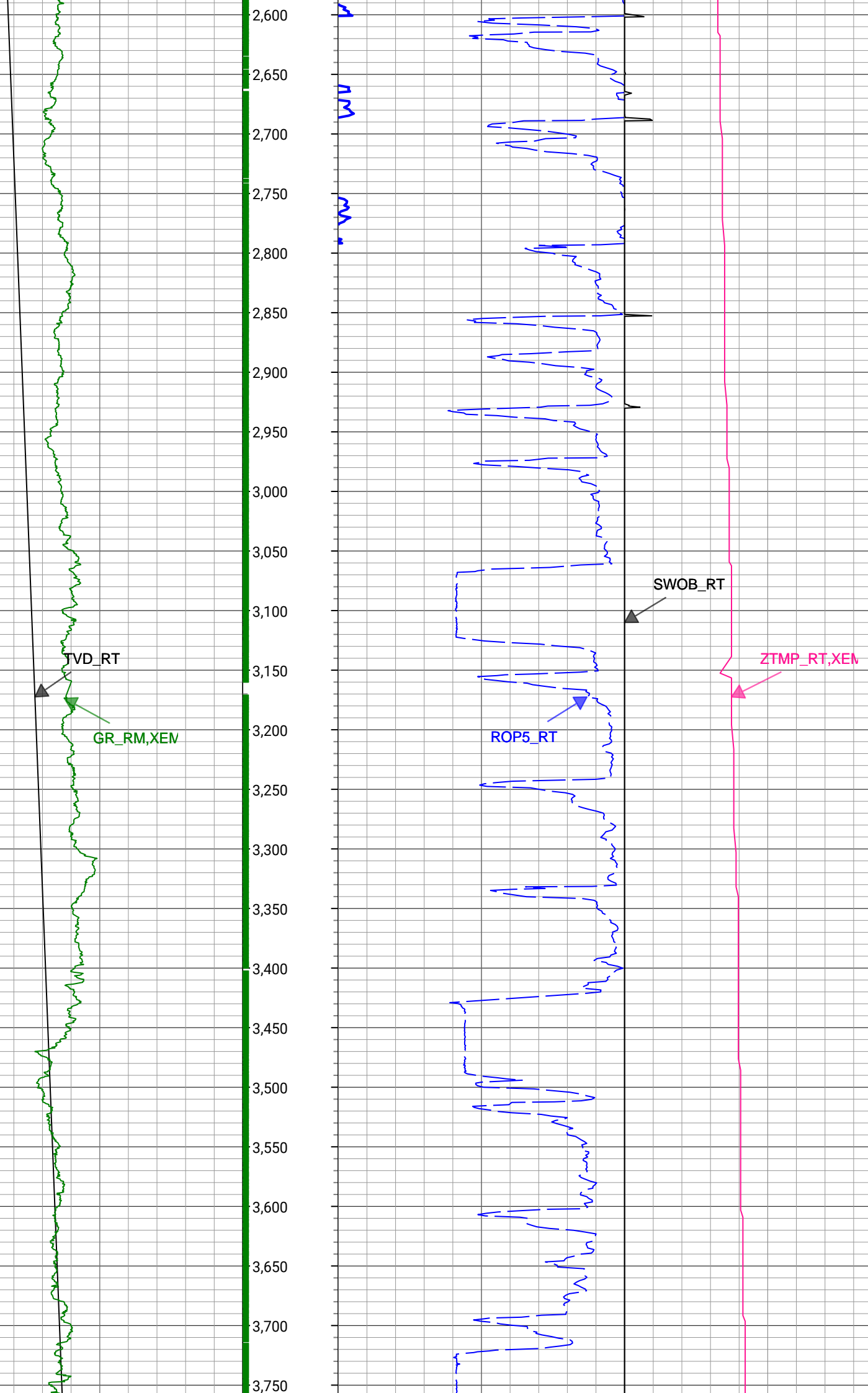
Index Scale: 1in/100ft

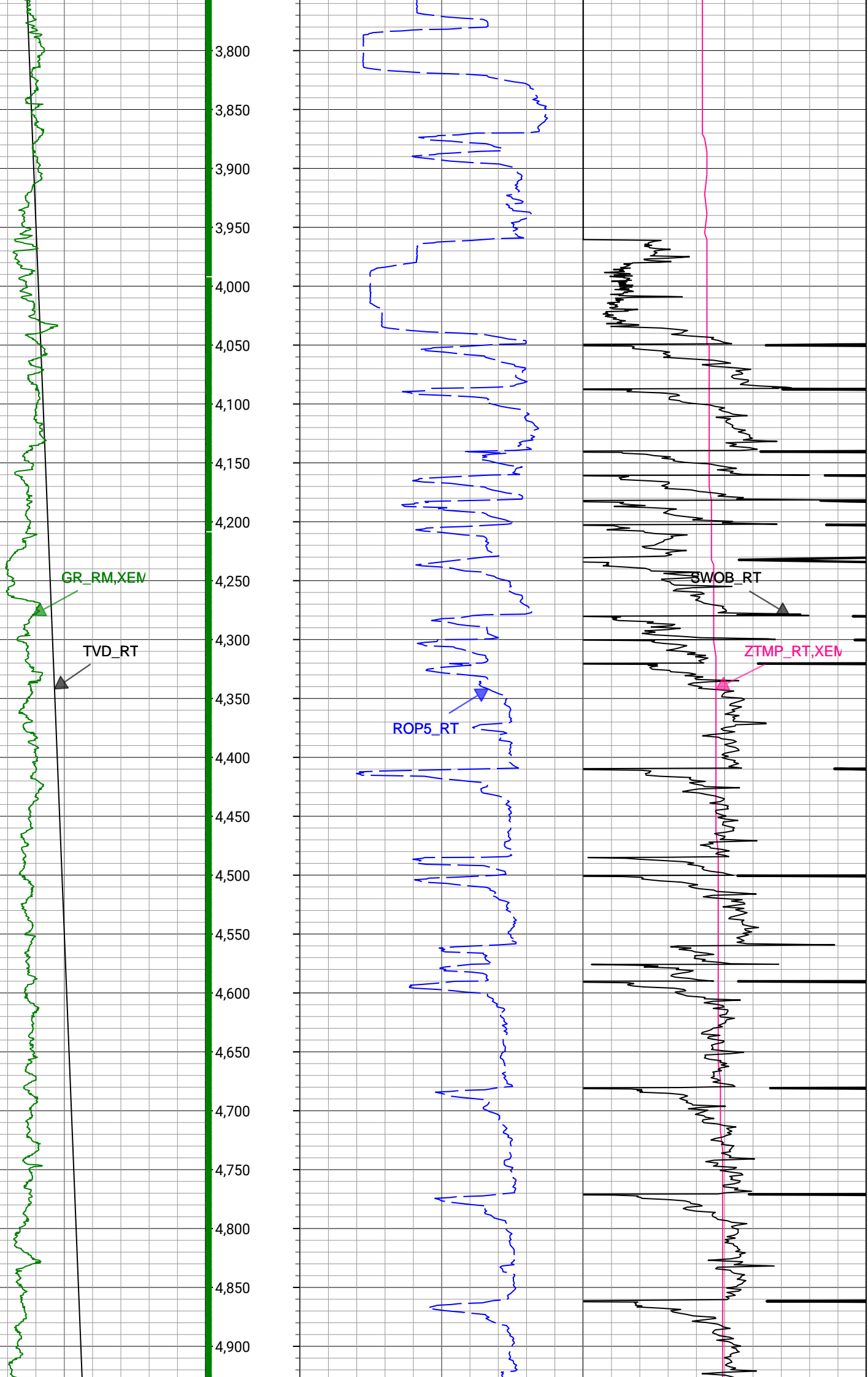
Index Unit: ft

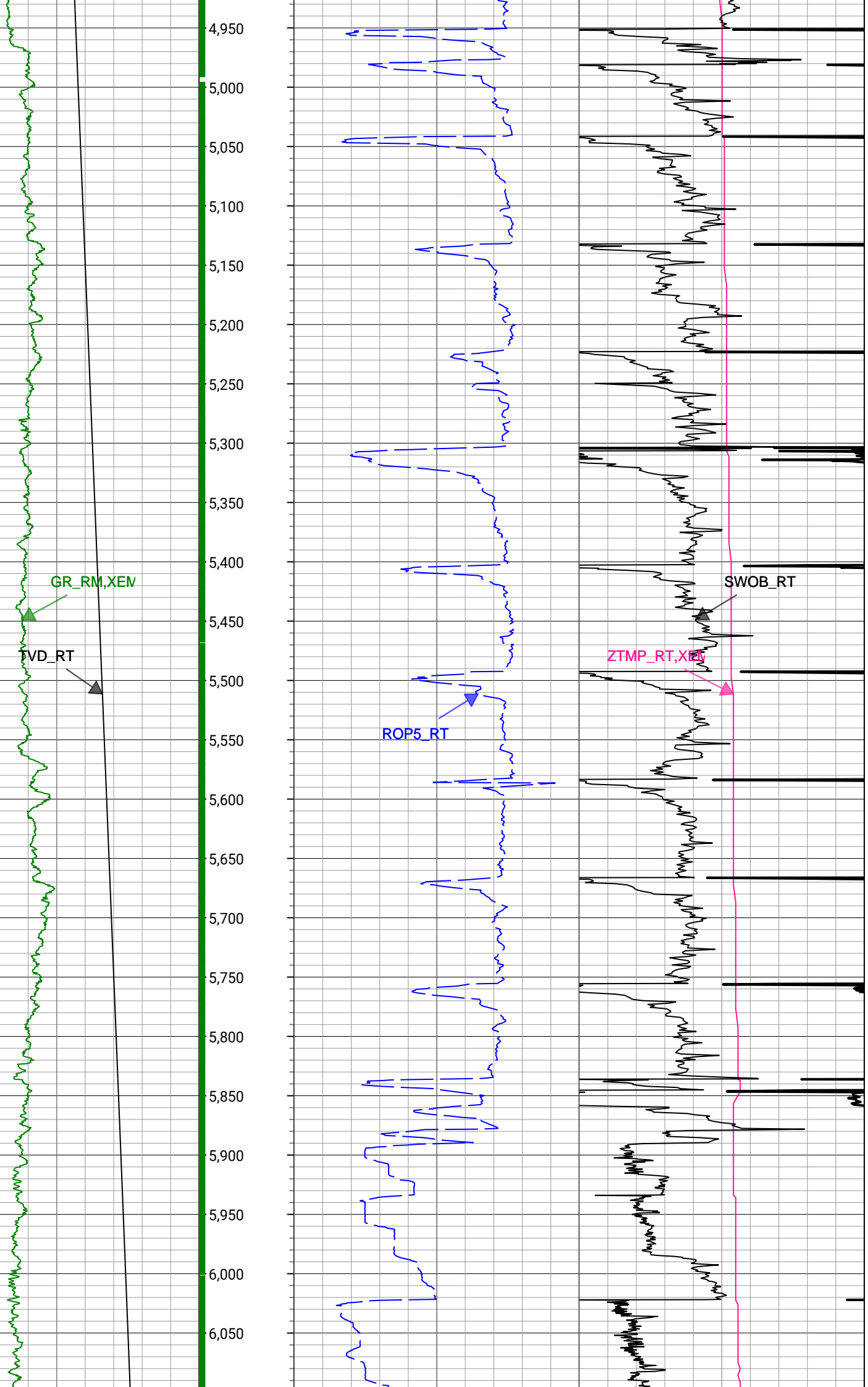
Index Type: Measured Depth

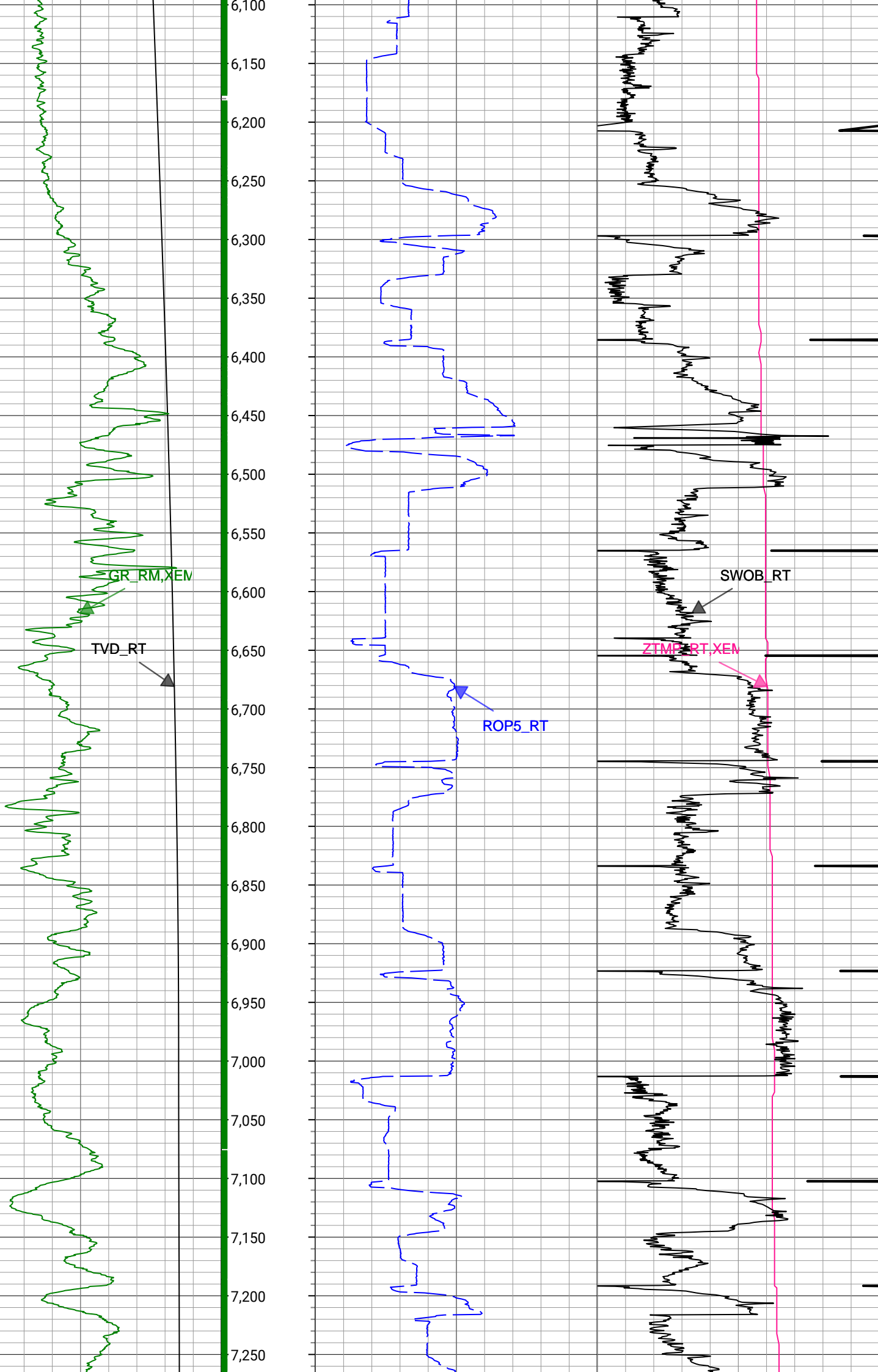
Creation Date: 04-Jan-2021











GR_RM,XEN

TVD_RT

ROP5_RT

SWOB_RT

ZTMP_RT,XEN

7,300

7,350

7,400

7,450

7,500

7,550

7,600

7,650

7,700

7,750

7,800

7,850

7,900

7,950

8,000

8,050

8,100

8,150

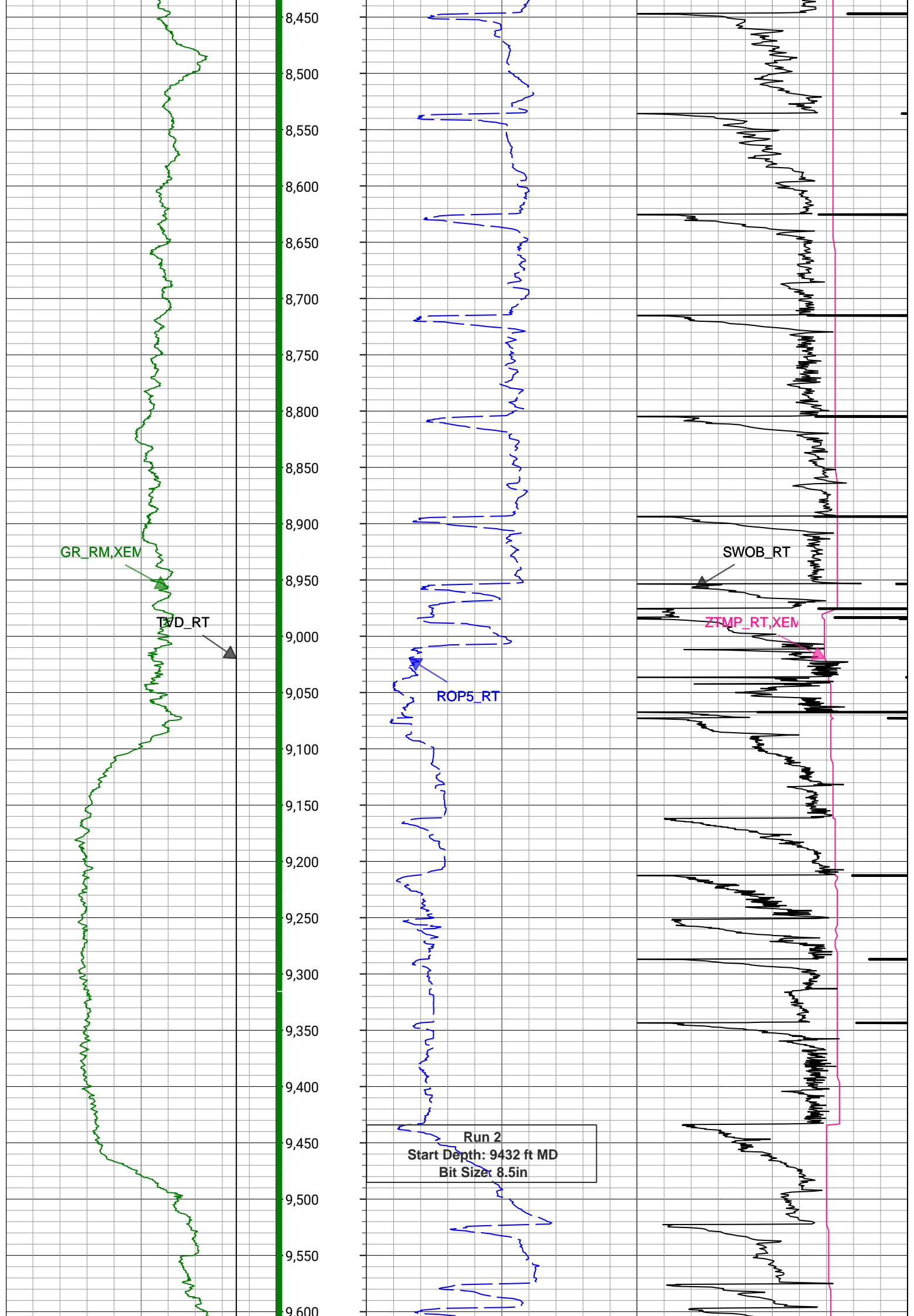
8,200

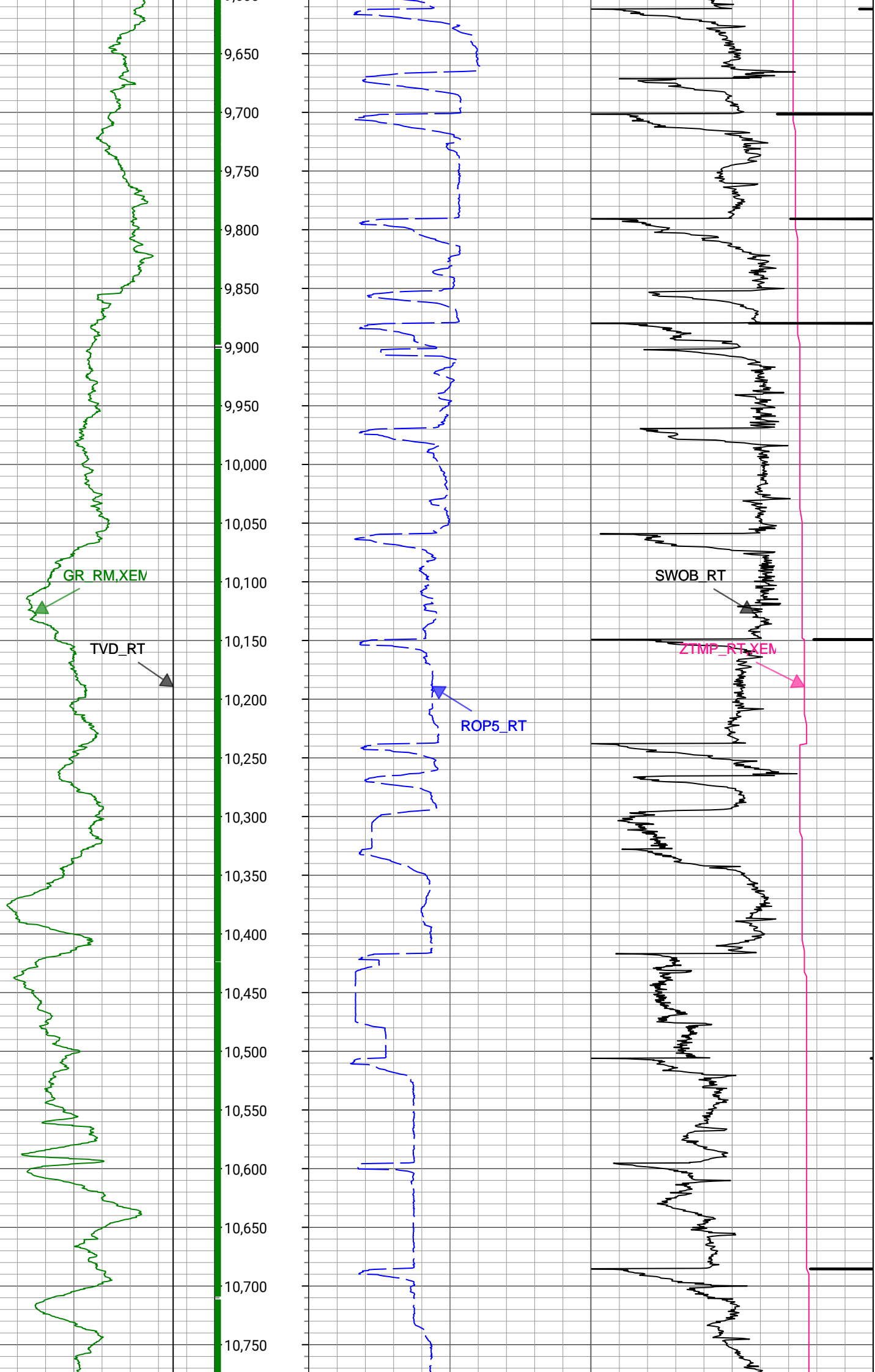
8,250

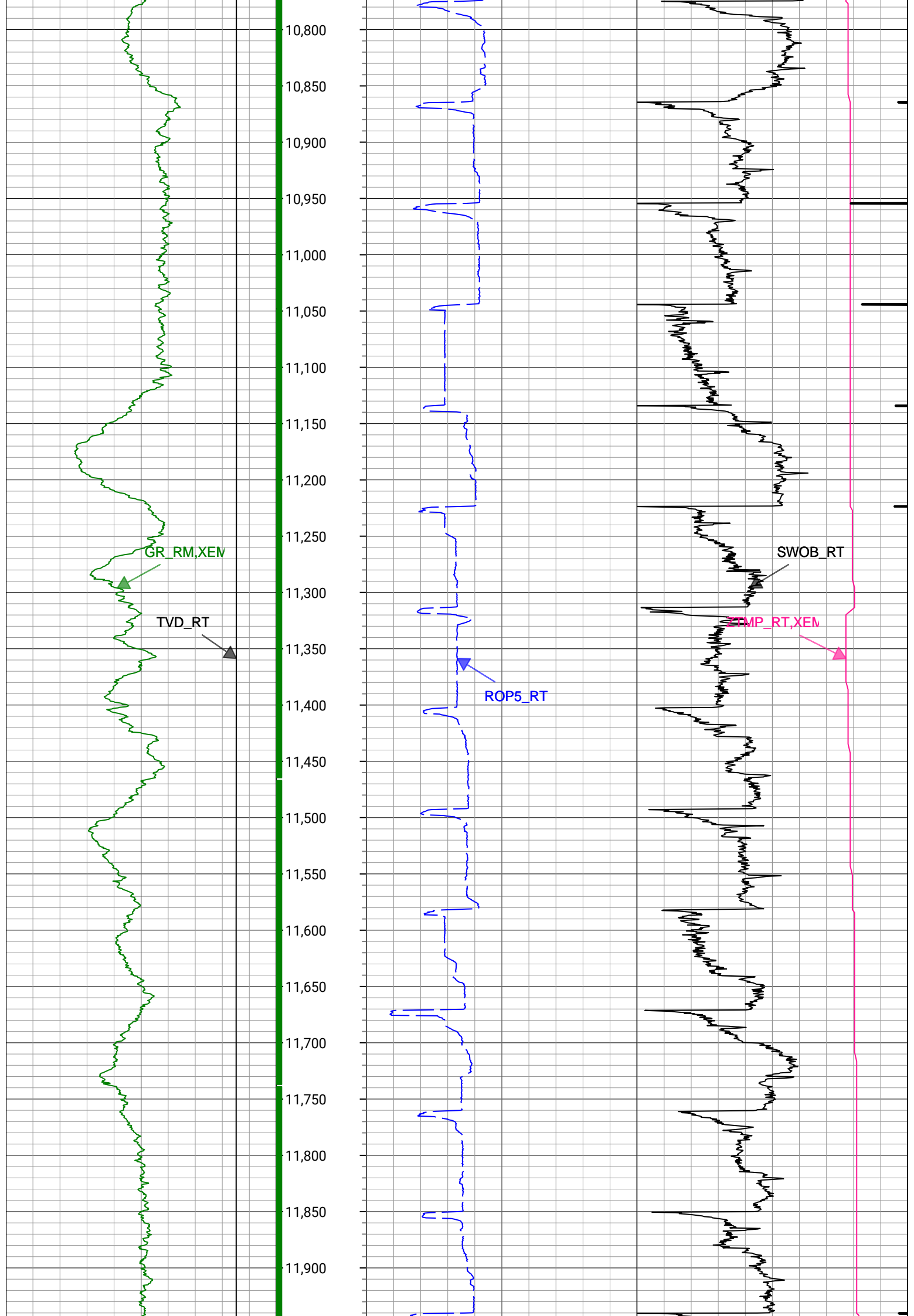
8,300

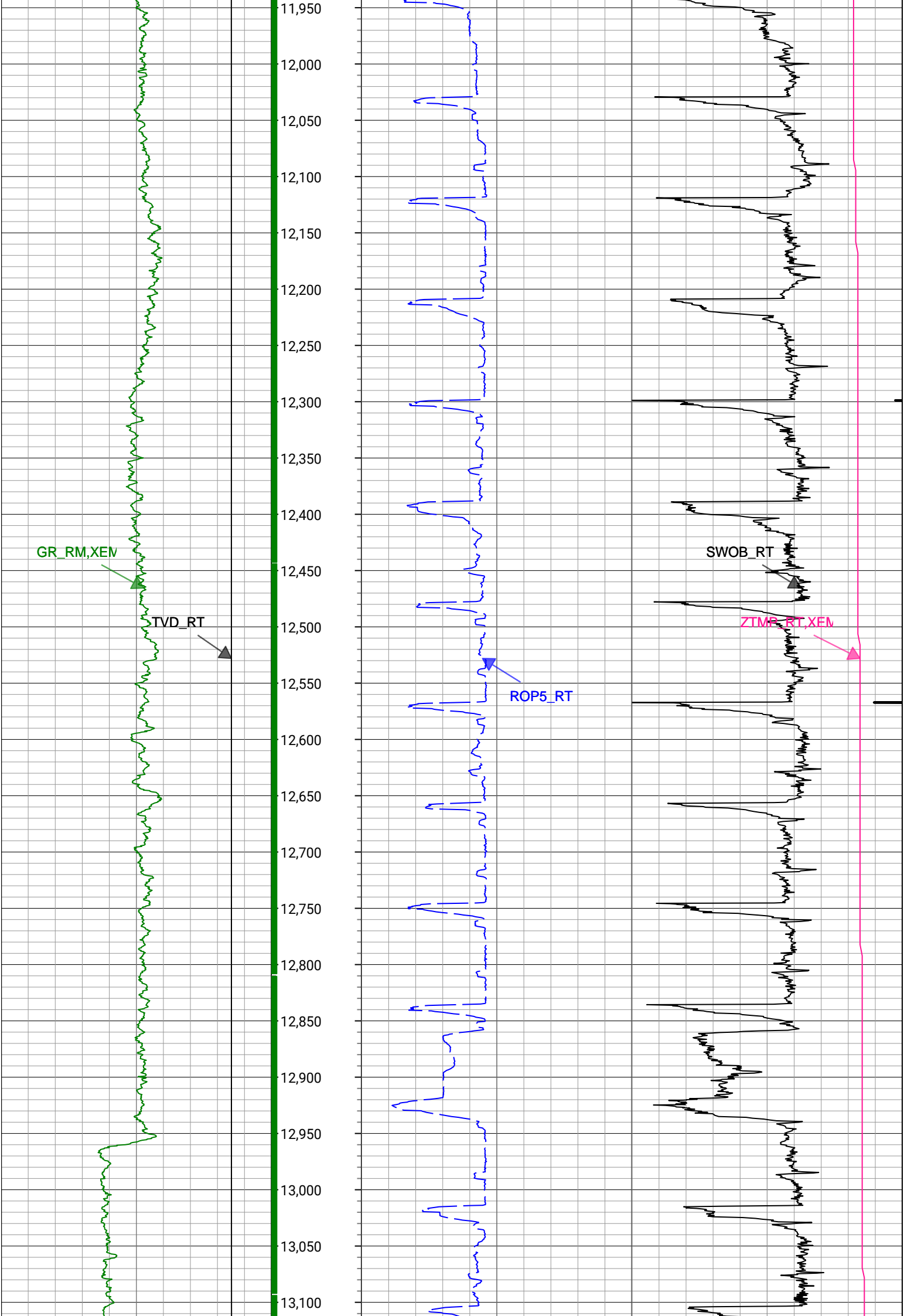
8,350

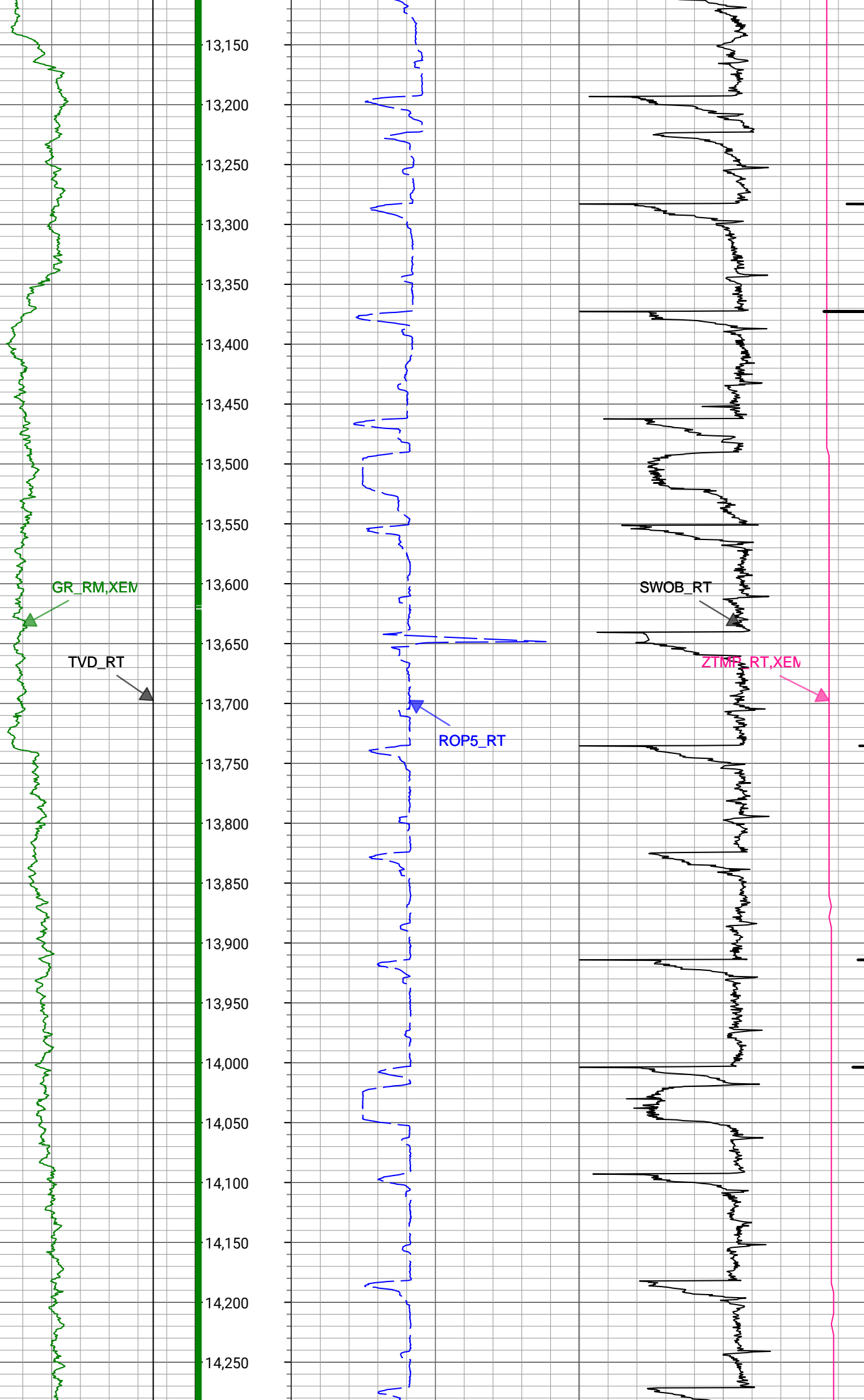
8,400

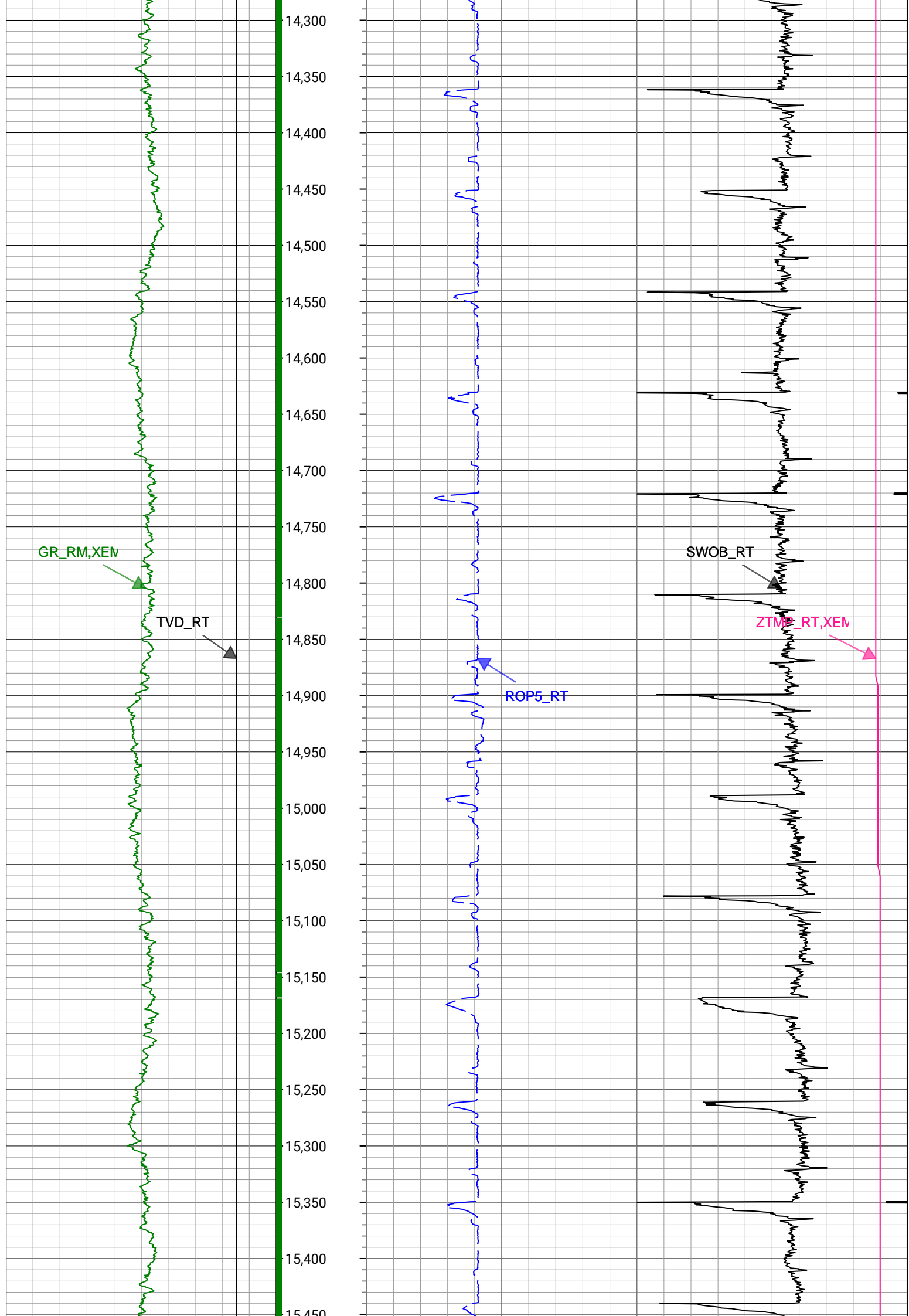


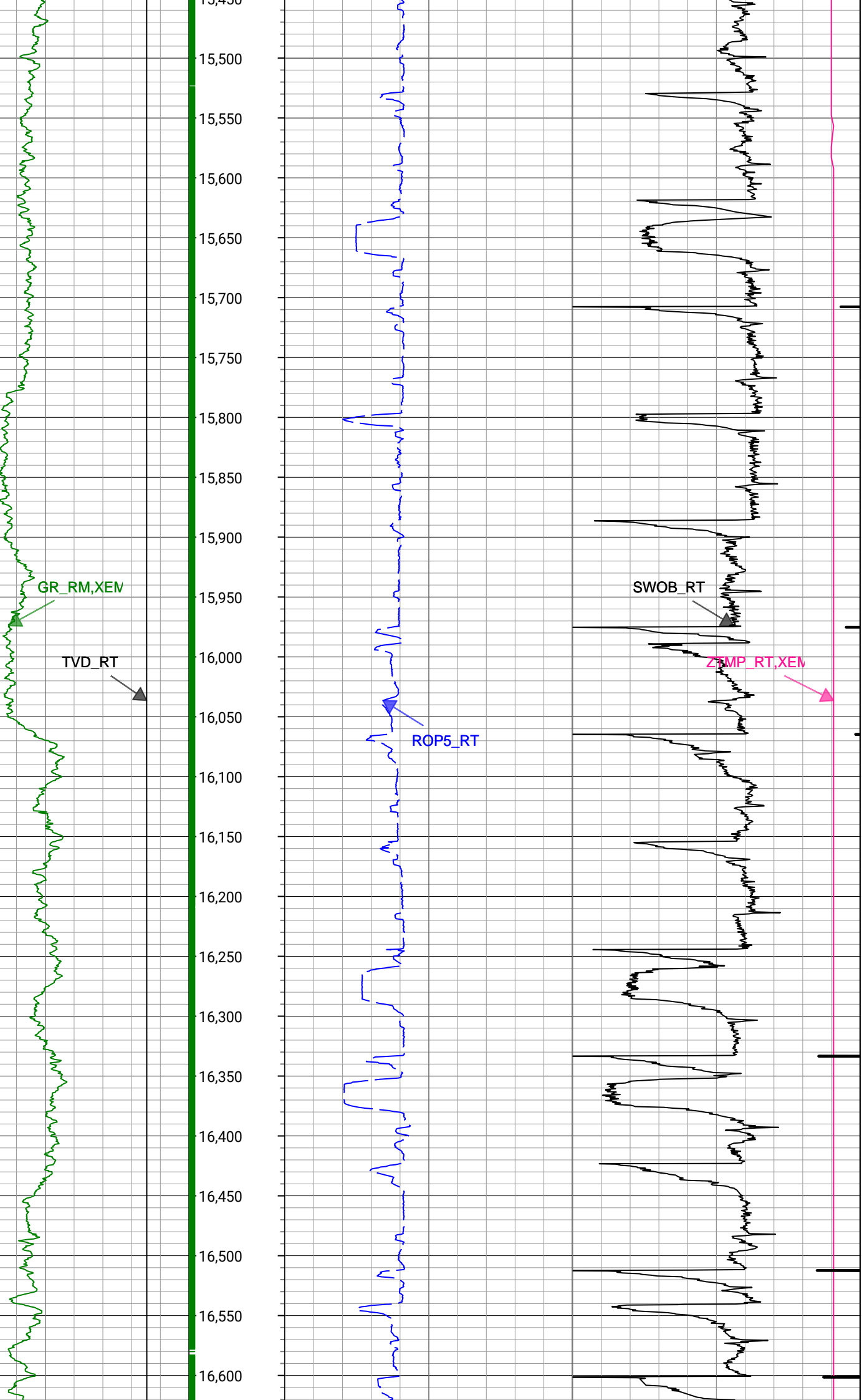


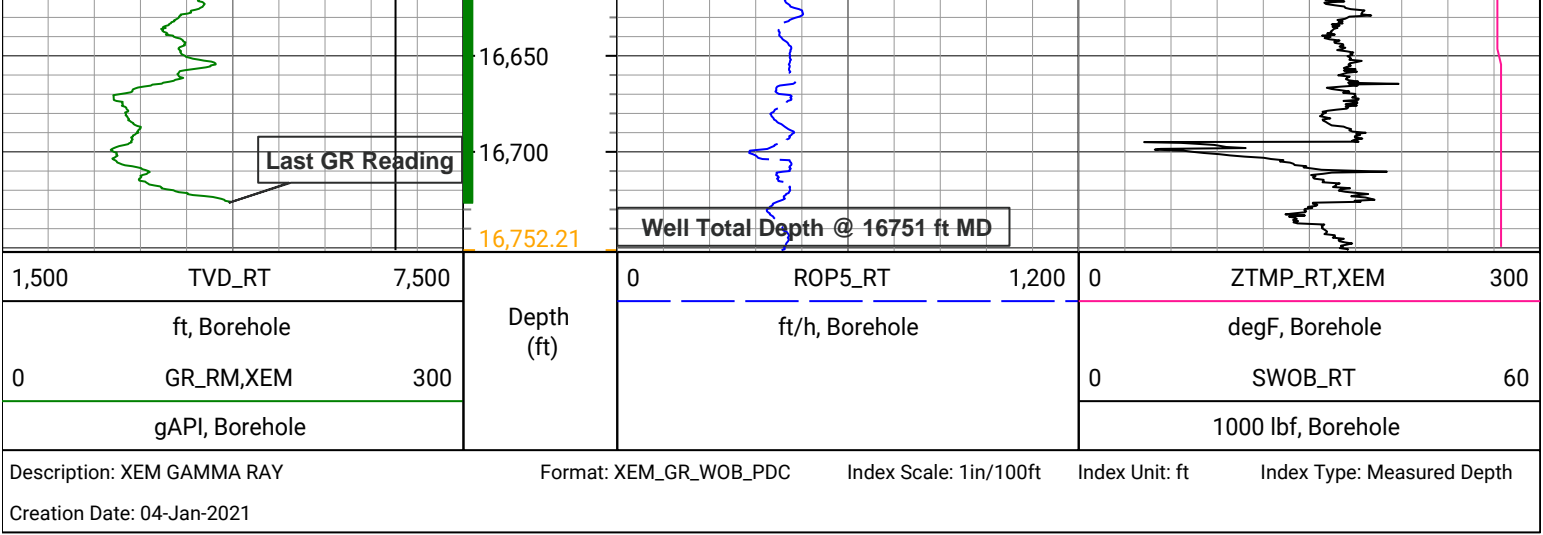












Survey Record

Survey Calculation

North Reference: True North

Tie In Point

Measured Depth:	0(ft)	Inclination:	0(deg)	Azimuth:	0(deg)
True Vertical Depth:	0(ft)	North Displacement:	0(ft)	East Displacement:	0(ft)

D&I Inits - Run - 1

Geomagnetic Model:	HDGM 2020	Geomagnetic Date:	24-Dec-2020 17:00:00
Location B:	51962(nT)	Location G:	999.049(mgn)
Magnetic Dip:	66.74(deg)	Magnetic Dec:	7.911(deg)
Total Correction:	7.911		

D&I Inits - Run - 2

Geomagnetic Model:	HDGM 2020	Geomagnetic Date:	23-Dec-2020 17:00:00
Location B:	51962(nT)	Location G:	999.049(mgn)
Magnetic Dip:	66.74(deg)	Magnetic Dec:	7.911(deg)
Total Correction:	7.911		

MD(ft)	Incl(deg)	Azim(deg)	TVD(ft)	V Sec(ft)	N/-S(ft)	E/-W(ft)	DLS (deg/100ft)	Closure Distance (ft)	Closure Azimuth (deg)	Tool Type
0	0	0	0	0.00	0	0	0.00			TIP
162	0.09	81.28	162	-0.13	0.02	0.13	0.06	0.13	81.28	MWD
254	0.18	166	254	-0.23	-0.11	0.23	0.21	0.26	115.35	MWD
375	0.35	125.93	375	-0.57	-0.51	0.58	0.2	0.77	131.52	MWD
465	0.26	90.24	465	-0.99	-0.67	1	0.23	1.21	123.85	MWD
554	0.18	155.28	554	-1.25	-0.8	1.26	0.28	1.5	122.36	MWD
643	0.09	15.71	643	-1.32	-0.86	1.34	0.29	1.59	122.68	MWD
733	0.26	244.93	733	-1.16	-0.88	1.18	0.36	1.47	126.79	MWD
822	0.35	249.5	822	-0.72	-1.06	0.74	0.1	1.29	145.14	MWD
912	0.53	245.4	911.99	-0.07	-1.33	0.1	0.2	1.33	175.59	MWD
1002	0.44	256.88	1001.99	0.65	-1.58	-0.61	0.15	1.7	201.17	MWD
1091	0.26	165.65	1090.99	0.93	-1.85	-0.9	0.58	2.06	205.76	MWD
1181	0.35	165.3	1180.99	0.82	-2.32	-0.77	0.1	2.44	198.48	MWD
1270	0.26	219.44	1269.99	0.89	-2.74	-0.83	0.32	2.86	196.95	MWD
1359	0.09	115.91	1358.99	0.96	-2.92	-0.9	0.33	3.06	197.1	MWD
1449	0.97	66.86	1448.98	0.19	-2.66	-0.14	1.02	2.66	182.92	MWD
1538	2.9	89.5	1537.93	-2.76	-2.34	2.81	2.29	3.66	129.79	MWD
1626	3.69	97.1	1625.78	-7.79	-2.67	7.85	1.02	8.29	108.8	MWD

	5.14	103.62	1790.29	-20.19	-5.07	20.3	0.93	20.92	104.02	Manual
1881	8.36	108.66	1879.65	-30.24	-8.11	30.42	3.63	31.48	104.93	Manual
1970	9.01	106.51	1967.63	-42.96	-12.16	43.23	0.82	44.91	105.71	Manual
2060	13.1	112.17	2055.95	-59.05	-18.02	59.44	4.7	62.11	106.86	Manual
2149	14.13	112.93	2142.44	-78.22	-26.05	78.78	1.17	82.98	108.3	Manual
2239	12.64	110.22	2230	-97.41	-33.74	98.14	1.8	103.78	108.97	Manual
2329	12.98	111.52	2317.76	-115.9	-40.85	116.79	0.5	123.72	109.28	Manual
2418	12.41	112.84	2404.58	-133.85	-48.23	134.9	0.72	143.26	109.67	Manual
2508	11.77	108.85	2492.59	-151.3	-54.95	152.5	1.17	162.1	109.81	Manual
2598	12.68	113.22	2580.55	-168.92	-61.81	170.26	1.44	181.14	109.95	Manual
2688	13.27	112.36	2668.25	-187.38	-69.63	188.89	0.69	201.32	110.24	Manual
2778	11.57	109.34	2756.14	-205.3	-76.55	206.96	2.02	220.67	110.3	Manual
2867	11.92	108.84	2843.28	-222.29	-82.47	224.09	0.41	238.78	110.21	Manual
2956	12.27	107.94	2930.3	-239.86	-88.36	241.78	0.45	257.42	110.07	Manual
3047	11.75	109.37	3019.31	-257.67	-94.41	259.72	0.66	276.35	109.98	Manual
3137	12.94	111	3107.23	-275.58	-101.06	277.78	1.38	295.59	109.99	Manual
3227	11.75	108.8	3195.14	-293.52	-107.62	295.86	1.42	314.83	109.99	Manual
3317	12.14	111.56	3283.2	-310.86	-114.05	313.34	0.77	333.45	110	Manual
3406	12.75	115.47	3370.11	-328.26	-121.72	330.91	1.17	352.58	110.19	Manual
3495	12.89	116.66	3456.89	-345.81	-130.39	348.64	0.34	372.23	110.51	Manual
3585	12.64	117.44	3544.66	-363.33	-139.44	366.36	0.34	391.99	110.84	Manual
3674	12.28	118.81	3631.57	-380.07	-148.48	383.29	0.52	411.05	111.18	Manual
3763	12.49	118.06	3718.5	-396.66	-157.57	400.08	0.3	429.99	111.5	Manual
3853	11.21	117.54	3806.58	-412.82	-166.2	416.42	1.43	448.36	111.76	Manual
3943	7.32	130.94	3895.4	-424.75	-174	428.52	4.91	462.5	112.1	Manual
4032	3.89	137.56	3983.96	-430.94	-179.95	434.84	3.92	470.6	112.48	Manual
4122	0.11	330.23	4073.89	-432.91	-182.13	436.86	4.44	473.3	112.63	Manual
4211	0.06	69.76	4162.89	-432.92	-182.04	436.86	0.15	473.27	112.62	Manual
4301	0.05	13.29	4252.89	-432.97	-181.98	436.91	0.06	473.3	112.61	Manual
4391	0.08	290.25	4342.89	-432.92	-181.92	436.86	0.1	473.23	112.61	Manual
4480	0.16	40.63	4431.89	-432.95	-181.81	436.88	0.23	473.2	112.59	Manual
4570	0.01	299.2	4521.89	-433.02	-181.71	436.96	0.18	473.23	112.58	Manual
4660	0.1	346.31	4611.89	-433	-181.63	436.93	0.1	473.18	112.57	Manual
4749	0.1	280.79	4700.89	-432.91	-181.54	436.84	0.12	473.06	112.57	Manual
4839	0.14	224.5	4790.89	-432.75	-181.6	436.68	0.13	472.94	112.58	Manual
4929	0.09	211.5	4880.89	-432.64	-181.74	436.57	0.06	472.89	112.6	Manual
5018	0.03	134.14	4969.89	-432.61	-181.81	436.55	0.1	472.9	112.61	Manual
5108	0.06	292.7	5059.89	-432.59	-181.81	436.52	0.1	472.87	112.61	Manual
5197	0.14	90.62	5148.89	-432.65	-181.8	436.59	0.22	472.93	112.61	Manual
5287	0.13	149.17	5238.89	-432.81	-181.88	436.75	0.15	473.11	112.61	Manual
5377	0.07	5.41	5328.89	-432.87	-181.92	436.81	0.21	473.18	112.61	Manual
5467	0.04	33.88	5418.89	-432.9	-181.84	436.83	0.04	473.17	112.6	Manual
5557	0.13	55.22	5508.89	-433	-181.75	436.93	0.1	473.23	112.59	Manual
5646	0.18	53.66	5597.89	-433.2	-181.61	437.13	0.06	473.35	112.56	Manual
5735	0.19	26.64	5686.89	-433.38	-181.4	437.31	0.1	473.44	112.53	Manual
5825	0.11	351.04	5776.89	-433.44	-181.18	437.36	0.13	473.4	112.5	Manual
5915	0.28	47.4	5866.89	-433.59	-180.94	437.51	0.26	473.45	112.47	Manual
6005	9.17	283.74	5956.51	-426.81	-179.09	430.69	10.36	466.44	112.58	Manual
6095	14.21	273.94	6044.62	-408.87	-176.62	412.69	6	448.9	113.17	Manual
6185	22.57	267.51	6129.96	-380.55	-176.62	384.36	9.54	423	114.68	Manual

6274	28.42	264.56	6210.26	-342.32	-179.37	346.18	6.72	389.89	117.39	Manual
6364	35.8	260.88	6286.45	-294.81	-185.58	298.8	8.48	351.74	121.84	Manual
6454	43.09	261.83	6355.9	-238.15	-194.13	242.3	8.13	310.48	128.7	Manual
6544	48.58	262.67	6418.59	-174.03	-202.81	178.35	6.14	270.08	138.67	Manual
6634	57.23	267.45	6472.84	-102.49	-208.81	106.92	10.5	234.6	152.89	Manual
6723	62.38	272.05	6517.6	-25.63	-209.07	30.06	7.31	211.22	171.82	Manual
6813	68.74	277.03	6554.84	55.8	-202.5	-51.54	8.68	208.96	194.28	Manual
6902	78.74	277.13	6579.73	140.24	-191.98	-136.22	11.24	235.4	215.36	Manual
6992	89.61	277.39	6588.85	228.67	-180.68	-224.9	12.08	288.49	231.22	Manual
7082	86.6	274.28	6591.82	317.92	-171.54	-314.37	4.81	358.12	241.38	Manual
7171	85.43	268.9	6598.01	406.56	-169.07	-403.08	6.17	437.1	247.24	Manual
7261	87.45	268.01	6603.6	496.38	-171.49	-492.87	2.45	521.85	250.81	Manual
7350	90.13	268.86	6605.48	585.35	-173.92	-581.81	3.16	607.25	253.36	Manual
7440	91.32	271.29	6604.34	675.31	-173.81	-671.79	3.01	693.91	255.49	Manual
7530	91.3	270.17	6602.28	765.24	-172.66	-761.76	1.24	781.08	257.23	Manual
7619	90.37	268.18	6600.99	854.22	-173.94	-850.74	2.47	868.34	258.44	Manual
7709	91.29	271.68	6599.68	944.18	-174.05	-940.71	4.02	956.68	259.52	Manual
7799	88.86	267.74	6599.56	1034.14	-174.51	-1030.69	5.14	1045.36	260.39	Manual
7888	89.12	267.56	6601.13	1123.11	-178.16	-1119.6	0.36	1133.68	260.96	Manual
7977	89.5	268.79	6602.2	1212.1	-180.99	-1208.54	1.45	1222.02	261.48	Manual
8067	89.2	269.78	6603.23	1302.09	-182.11	-1298.53	1.15	1311.24	262.02	Manual
8157	89.33	268.15	6604.38	1392.08	-183.74	-1388.51	1.82	1400.61	262.46	Manual
8246	88.72	268.71	6605.89	1481.06	-186.18	-1477.46	0.93	1489.14	262.82	Manual
8336	89.17	267.57	6607.55	1571.04	-189.1	-1567.39	1.36	1578.76	263.12	Manual
8426	88.86	268.84	6609.1	1661.02	-191.92	-1657.33	1.45	1668.41	263.39	Manual
8516	89.01	268.55	6610.77	1751	-193.96	-1747.3	0.36	1758.03	263.67	Manual
8606	89.83	269.75	6611.68	1840.99	-195.3	-1837.28	1.61	1847.63	263.93	Manual
8696	90.06	271.19	6611.77	1930.95	-194.56	-1927.27	1.62	1937.07	264.24	Manual
8785	90.03	271.13	6611.7	2019.88	-192.76	-2016.25	0.08	2025.45	264.54	Manual
8875	90.03	271.02	6611.65	2109.8	-191.07	-2106.24	0.12	2114.89	264.82	Manual
8964	89.96	272.35	6611.66	2198.69	-188.45	-2195.2	1.5	2203.27	265.09	Manual
9054	90.63	271.74	6611.2	2288.54	-185.24	-2285.14	1.01	2292.63	265.37	Manual
9144	89.86	269.84	6610.81	2378.48	-184	-2375.12	2.28	2382.24	265.57	Manual
9234	89.75	270.3	6611.12	2468.46	-183.89	-2465.12	0.53	2471.97	265.73	Manual
9323	89.88	271.27	6611.41	2557.4	-182.67	-2554.11	1.1	2560.64	265.91	Manual
9413	89.88	270.14	6611.59	2647.35	-181.57	-2644.11	1.26	2650.33	266.07	Manual
9503	90.51	272.51	6611.29	2737.25	-179.48	-2734.07	2.72	2739.96	266.24	Manual
9592	89.71	269.11	6611.12	2826.19	-178.23	-2823.05	3.92	2828.67	266.39	Manual
9682	89.01	268.74	6612.12	2916.18	-179.91	-2913.03	0.88	2918.58	266.47	Manual
9772	89.13	268.99	6613.58	3006.17	-181.7	-3003	0.31	3008.49	266.54	Manual
9861	89.63	270.62	6614.55	3095.14	-182	-3091.99	1.92	3097.34	266.63	Manual
9951	89.86	269.94	6614.95	3185.11	-181.56	-3181.99	0.8	3187.16	266.73	Manual
10041	90.49	272.3	6614.67	3275.03	-179.8	-3271.96	2.71	3276.9	266.85	Manual
10130	90.21	272.12	6614.13	3363.87	-176.37	-3360.9	0.37	3365.52	267	Manual
10219	89.51	269.7	6614.35	3452.8	-174.96	-3449.88	2.83	3454.31	267.1	Manual
10309	89.28	269.23	6615.3	3542.79	-175.8	-3539.87	0.58	3544.23	267.16	Manual
10399	93.14	274.65	6613.39	3632.58	-172.75	-3629.75	7.39	3633.85	267.28	Manual
10489	89.9	269.43	6611.01	3722.36	-169.56	-3719.61	6.82	3723.48	267.39	Manual
10578	89.62	269.46	6611.38	3811.36	-170.42	-3808.61	0.32	3812.42	267.44	Manual
10668	89.69	268.64	6611.92	3901.35	-171.91	-3898.59	0.91	3902.38	267.48	Manual

10757	89.82	269.7	6612.3	3990.35	-173.2	-3987.58	1.2	3991.34	267.51	Manual
10847	90.48	272.63	6612.07	4080.26	-171.37	-4077.55	3.34	4081.15	267.59	Manual
10937	88.85	266	6612.59	4170.2	-172.45	-4167.49	7.59	4171.06	267.63	Manual
11027	89.08	265.32	6614.22	4260.05	-179.26	-4257.22	0.8	4260.99	267.59	Manual
11117	90.39	267.45	6614.63	4349.97	-184.93	-4347.03	2.78	4350.96	267.56	Manual
11206	91.02	270.24	6613.54	4438.95	-186.72	-4436	3.21	4439.93	267.59	Manual
11296	91.23	270.39	6611.77	4528.9	-186.23	-4525.98	0.29	4529.81	267.64	Manual
11386	91.11	270.17	6609.93	4618.85	-185.79	-4615.96	0.28	4619.7	267.7	Manual
11476	90.72	269.44	6608.5	4708.83	-186.09	-4705.95	0.92	4709.62	267.74	Manual
11566	90.93	269.26	6607.2	4798.81	-187.12	-4795.93	0.31	4799.58	267.77	Manual
11655	89.53	269.27	6606.84	4887.81	-188.26	-4884.92	1.57	4888.55	267.79	Manual
11745	90.11	270.46	6607.13	4977.79	-188.47	-4974.92	1.47	4978.49	267.83	Manual
11834	89.49	269.88	6607.44	5066.76	-188.21	-5063.92	0.95	5067.41	267.87	Manual
11924	89.54	268.77	6608.2	5156.75	-189.27	-5153.91	1.23	5157.38	267.9	Manual
12013	90.1	270.46	6608.48	5245.74	-189.86	-5242.9	2	5246.34	267.93	Manual
12102	89.94	269.88	6608.45	5334.71	-189.6	-5331.9	0.68	5335.27	267.96	Manual
12191	89.53	270.16	6608.86	5423.69	-189.57	-5420.9	0.56	5424.21	268	Manual
12282	90.03	269.48	6609.21	5514.68	-189.85	-5511.9	0.93	5515.16	268.03	Manual
12370	90.06	270.11	6609.14	5602.66	-190.17	-5599.89	0.72	5603.12	268.06	Manual
12461	89.66	269.9	6609.36	5693.64	-190.16	-5690.89	0.5	5694.07	268.09	Manual
12550	90	270.15	6609.63	5782.62	-190.12	-5779.89	0.47	5783.02	268.12	Manual
12639	89.85	269.48	6609.74	5871.6	-190.41	-5868.89	0.77	5871.98	268.14	Manual
12729	89.94	270.59	6609.91	5961.58	-190.35	-5958.89	1.24	5961.93	268.17	Manual
12819	90.05	270.53	6609.92	6051.54	-189.48	-6048.89	0.14	6051.85	268.21	Manual
12908	89.75	269.21	6610.07	6140.52	-189.68	-6137.88	1.52	6140.81	268.23	Manual
12998	89.64	269.94	6610.55	6230.51	-190.34	-6227.88	0.82	6230.79	268.25	Manual
13087	88.99	268.68	6611.61	6319.5	-191.42	-6316.86	1.59	6319.76	268.26	Manual
13177	89.33	268.27	6612.93	6409.49	-193.81	-6406.82	0.59	6409.75	268.27	Manual
13266	89.42	269.51	6613.9	6498.48	-195.54	-6495.8	1.4	6498.74	268.28	Manual
13356	89.52	270.41	6614.74	6588.46	-195.6	-6585.79	1.01	6588.7	268.3	Manual
13446	89.25	269.36	6615.7	6678.43	-195.78	-6675.79	1.2	6678.66	268.32	Manual
13536	89.51	269.2	6616.68	6768.42	-196.91	-6765.77	0.34	6768.64	268.33	Manual
13625	90.03	269.21	6617.03	6857.42	-198.14	-6854.77	0.58	6857.63	268.34	Manual
13715	89.92	269.5	6617.07	6947.42	-199.16	-6944.76	0.34	6947.61	268.36	Manual
13804	89.7	269.28	6617.37	7036.41	-200.1	-7033.75	0.35	7036.6	268.37	Manual
13894	89.76	269.59	6617.79	7126.4	-200.99	-7123.75	0.35	7126.58	268.38	Manual
13984	89.63	268.64	6618.27	7216.4	-202.38	-7213.74	1.07	7216.57	268.39	Manual
14074	90.2	269.66	6618.4	7306.4	-203.72	-7303.72	1.3	7306.56	268.4	Manual
14163	90.15	269.38	6618.13	7395.39	-204.46	-7392.72	0.32	7395.55	268.42	Manual
14253	90.14	270.06	6617.91	7485.38	-204.9	-7482.72	0.76	7485.52	268.43	Manual
14342	90.11	268.63	6617.71	7574.37	-205.92	-7571.71	1.61	7574.51	268.44	Manual
14432	89.61	268.35	6617.93	7664.37	-208.29	-7661.68	0.64	7664.51	268.44	Manual
14521	89.82	269.58	6618.37	7753.36	-209.9	-7750.66	1.4	7753.5	268.45	Manual
14612	90.22	270.28	6618.34	7844.35	-210.01	-7841.66	0.89	7844.47	268.47	Manual
14701	90.51	270.7	6617.77	7933.3	-209.25	-7930.65	0.57	7933.41	268.49	Manual
14791	90.2	269.92	6617.22	8023.27	-208.76	-8020.65	0.93	8023.37	268.51	Manual
14881	90.34	269.39	6616.79	8113.26	-209.3	-8110.65	0.61	8113.35	268.52	Manual
14971	90.27	268.92	6616.31	8203.26	-210.63	-8200.64	0.53	8203.34	268.53	Manual
15061	90.42	270.77	6615.77	8293.23	-210.87	-8290.63	2.06	8293.31	268.54	Manual
15150	90.11	270.16	6615.26	8382.19	-210.15	-8379.62	0.77	8382.26	268.56	Manual

15130	90.11	270.10	6613.30	8382.19	-210.13	-8379.03	0.77	8382.20	268.50	Manual
15240	90.36	270.54	6614.99	8472.16	-209.6	-8469.62	0.51	8472.22	268.58	Manual
15330	90.2	269.9	6614.55	8562.13	-209.26	-8559.62	0.73	8562.18	268.6	Manual
15420	90	269.36	6614.39	8652.12	-209.84	-8649.62	0.64	8652.16	268.61	Manual
15510	90.37	270.06	6614.1	8742.11	-210.29	-8739.62	0.88	8742.15	268.62	Manual
15600	90.15	269.01	6613.7	8832.1	-211.02	-8829.61	1.19	8832.13	268.63	Manual
15690	90.02	268.45	6613.56	8922.1	-213.02	-8919.59	0.64	8922.13	268.63	Manual
15780	89.64	268.63	6613.83	9012.1	-215.31	-9009.56	0.47	9012.13	268.63	Manual
15870	90.08	269.11	6614.05	9102.1	-217.09	-9099.54	0.72	9102.13	268.63	Manual
15960	90	269.96	6613.99	9192.09	-217.82	-9189.54	0.95	9192.12	268.64	Manual
16049	89.81	269.88	6614.13	9281.07	-217.94	-9278.54	0.23	9281.1	268.65	Manual
16138	89.75	268.8	6614.48	9370.06	-218.97	-9367.53	1.22	9370.09	268.66	Manual
16227	89.48	268.23	6615.07	9459.06	-221.27	-9456.5	0.71	9459.08	268.66	Manual
16317	89.67	268.93	6615.74	9549.06	-223.5	-9546.47	0.81	9549.08	268.66	Manual
16407	89.92	269.28	6616.06	9639.05	-224.91	-9636.45	0.48	9639.08	268.66	Manual
16496	89.74	271.44	6616.33	9728.01	-224.35	-9725.45	2.44	9728.03	268.68	Manual
16585	89.66	270.55	6616.79	9816.95	-222.8	-9814.43	1	9816.96	268.7	Manual
16675	90.5	273.35	6616.67	9906.8	-219.74	-9904.37	3.25	9906.81	268.73	Manual
16729	90.17	271.87	6616.35	9960.68	-217.28	-9958.31	2.81	9960.68	268.75	Manual
16751	90.17	271.87	6616.29	9982.65	-216.57	-9980.3	0	9982.65	268.76	Manual

Company:

Well:

Field Name:

Country Name:

State Name:

County Name:

PDC Energy Inc


Pharaoh 1N

Wattenberg

United States

Colorado

Weld



XEM GAMMA RAY

1in/100ft Measured Depth

Final Print

Recorded Mode