

# Inspection Photos

3/9/2021

Operator: CAERUS PICEANCE LLC #10456

Location ID: 335594

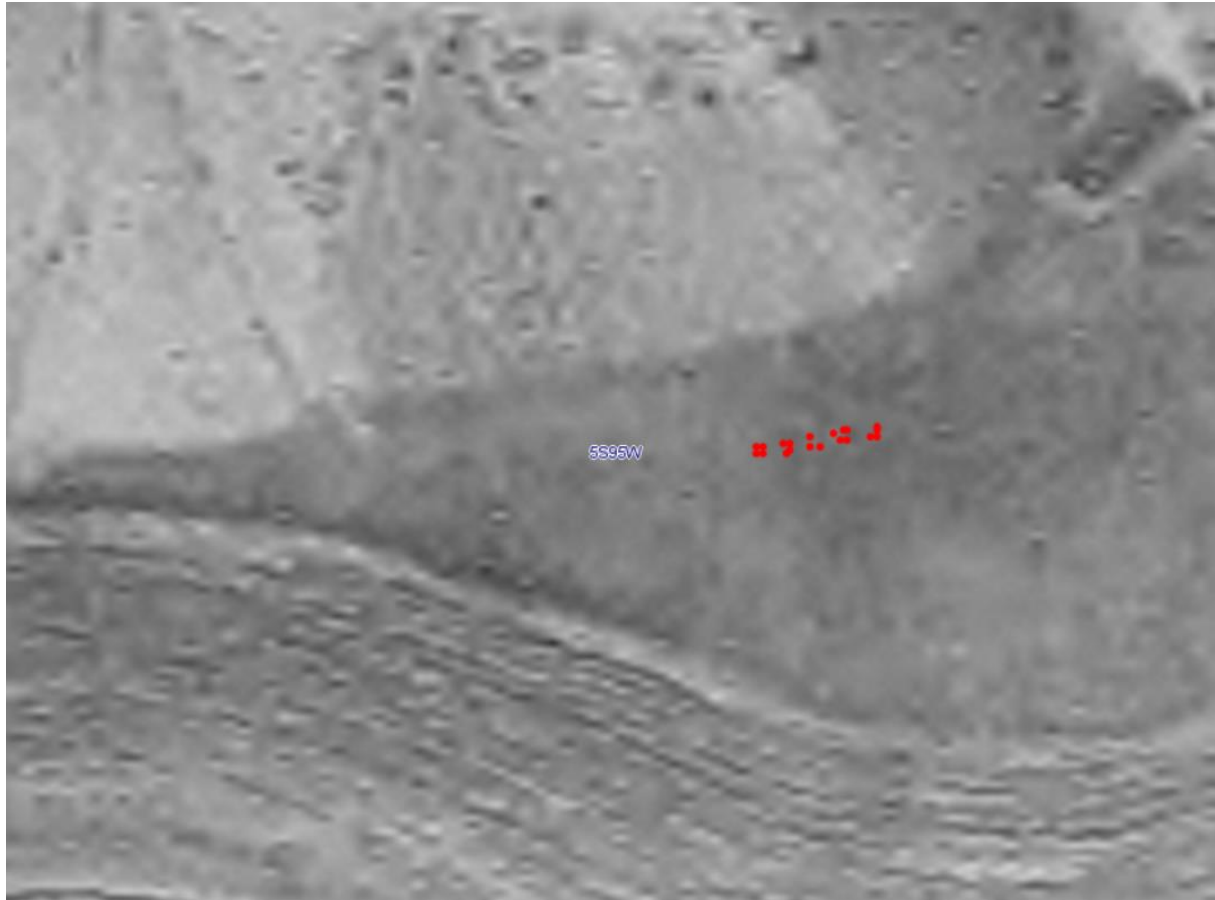
Garfield County, CO

Aaron Trujillo

NW Reclamation Specialist

COGCC

Inspection Photos  
Operator Name: CAERUS PICEANCE LLC #10456  
Location ID: 335594



**Photo 1:** 1990s COGIS aerial imagery. Photo shows overview of the Location prior to construction of the Location.

Inspection Photos  
Operator Name: CAERUS PICEANCE LLC #10456  
Location ID: 335594



**Photo 2:** 2019 COGIS areal image. Photo shows constructed areas to the west, and northwest of the Location not needed for production, and require reclamation in accordance with COGCC 1003 rules. Remediation project #7966 currently in process on the northern and northeastern areas of the Location.



Inspection Photos  
Operator Name: CAERUS PICEANCE LLC #10456  
Location ID: 335594



**Photo 3:** Photo taken from the south end of the Location, facing west. Photos 3-6 provide an overview of the Location from west, northwest, northeast to east. Photos also show areas on the northwest corner of the Location not necessary for production that requires reclamation.



Inspection Photos  
Operator Name: CAERUS PICEANCE LLC #10456  
Location ID: 335594



**Photo 4:** See comments under photo 3.





Inspection Photos  
Operator Name: CAERUS PICEANCE LLC #10456  
Location ID: 335594



**Photo 5:** See comments under photo 3.





Inspection Photos  
Operator Name: CAERUS PICEANCE LLC #10456  
Location ID: 335594



**Photo 6:** See comments under photo 3.





Inspection Photos  
Operator Name: CAERUS PICEANCE LLC #10456  
Location ID: 335594



**Photo 7:** Photo taken from the slopes on the north end of the Location, facing northeast. Photo shows that control measures to stabilize and protect the slopes are missing or insufficient. Uniform vegetative establishment is not progressing towards 1003 standards.



Inspection Photos  
Operator Name: CAERUS PICEANCE LLC #10456  
Location ID: 335594



**Photo 8:** Photo taken from the slopes on the north end of the Location, facing north. Photo shows that control measures to stabilize and protect the slopes are missing or insufficient. Uniform vegetative establishment is not progressing towards 1003 standards.





Inspection Photos  
Operator Name: CAERUS PICEANCE LLC #10456  
Location ID: 335594



**Photo 9:** Photo taken from the slopes on the north end of the Location, facing northwest. Photo shows that control measures to stabilize and protect the slopes are missing or insufficient. Uniform vegetative establishment is not progressing towards 1003 standards.



Inspection Photos  
Operator Name: CAERUS PICEANCE LLC #10456  
Location ID: 335594



**Photo 10:** Photo shows unused hose equipment stored on the northeast corner of the Location.





Inspection Photos  
Operator Name: CAERUS PICEANCE LLC #10456  
Location ID: 335594



**Photo 11:** Photo taken from the northeast corner of the pad, facing south. Photos 11-13 provide an overview of the Location from south, southwest to west. Remediation project #7966 currently in process on the northern and northeastern areas of the Location.



Inspection Photos  
Operator Name: CAERUS PICEANCE LLC #10456  
Location ID: 335594



**Photo 12:** See comments under photo 11.





Inspection Photos  
Operator Name: CAERUS PICEANCE LLC #10456  
Location ID: 335594



**Photo 13:** See comments under photo 11.





Inspection Photos  
Operator Name: CAERUS PICEANCE LLC #10456  
Location ID: 335594



**Photo 14:** Photo taken from the southeastern interim areas. Photo shows Musk thistle remnants from the 2020 growing season. Unclear if sufficient noxious weed management efforts were performed prior to the onset of winter conditions. A follow up inspection will be conducted to determine compliance with Rule 1003.f





Inspection Photos  
Operator Name: CAERUS PICEANCE LLC #10456  
Location ID: 335594



**Photo 15:** Photo taken from the southeastern interim areas, facing north. Photo shows trash debris (orange safety fence).





**Inspection Photos**  
**Operator Name: CAERUS PICEANCE LLC #10456**  
**Location ID: 335594**



**Photo 16:** Photo of sign at Location entrance.

