

Foundation Energy Management LLC, Brown 22-32
125-08983

Inspection #688309801

2/23/2021

Routine Inspection



Colorado Oil and Gas Conservation Commission
40.00319, -102.43502, 3799.2ft, 315°
02/23/2021 02:54:07 PM



Colorado Oil and Gas Conservation Commission
40.01698, -102.42884, 3825.5ft, 152°
02/23/2021 03:29:54 PM

FOUNDATION ENERGY

BROWN No. 22-32

SE NW SEC. 32-1N-45W

1 MI. N. OF RDS. 30 & X

YUMA COUNTY, CO

**24 - HOUR EMERGENCY CALL:
1-866-767-3600**

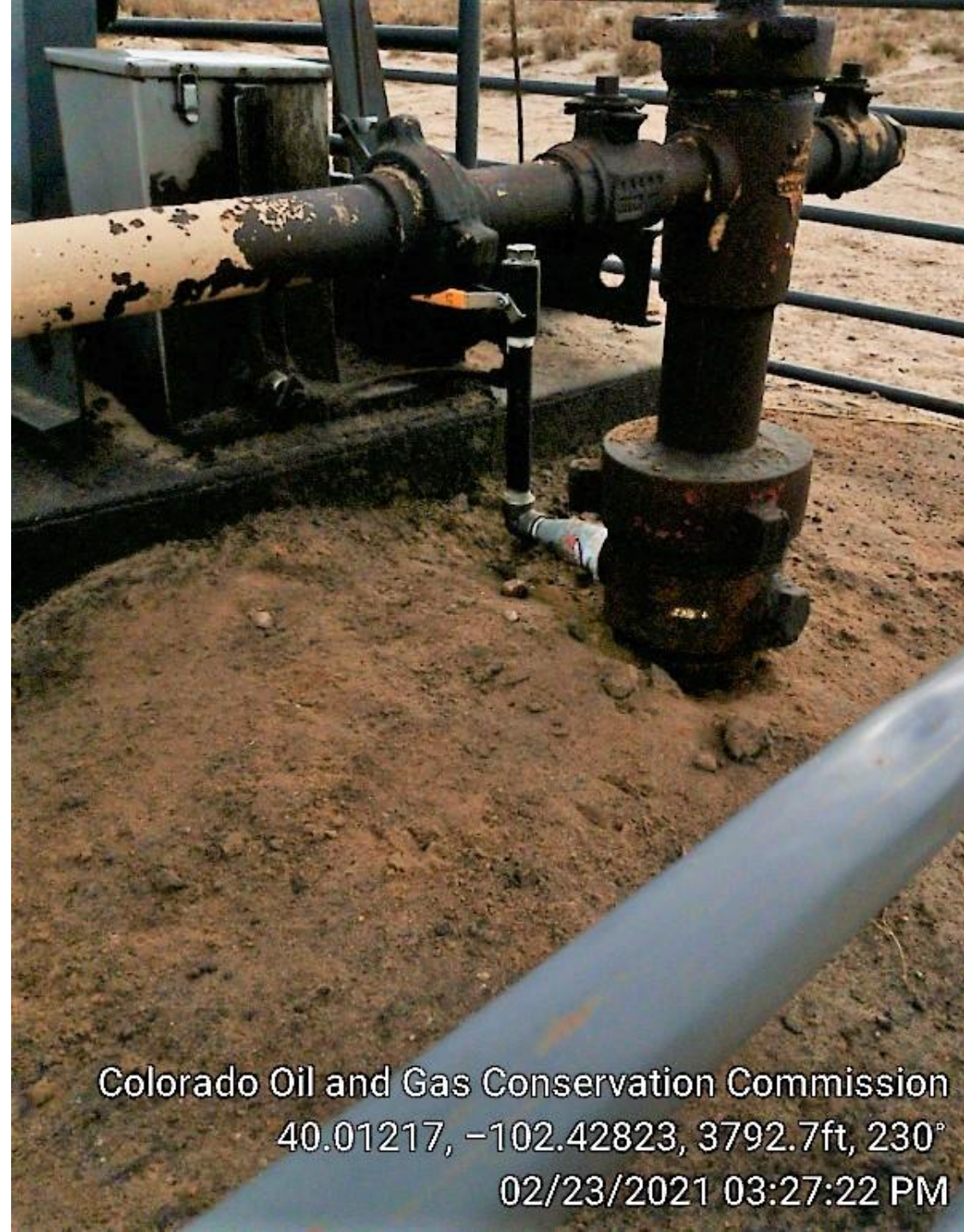
Colorado Oil and Gas Conservation Commission

40.01208, -102.42819, 3786.1ft, 307°

02/23/2021 03:26:40 PM



Colorado Oil and Gas Conservation Commission
40.01214, -102.42828, 3799.2ft, 90°
02/23/2021 03:27:30 PM



Colorado Oil and Gas Conservation Commission
40.01217, -102.42823, 3792.7ft, 230°
02/23/2021 03:27:22 PM



Colorado Oil and Gas Conservation Commission
40.01211, -102.42823, 3795.9ft, 22°
02/23/2021 03:27:43 PM



Colorado Oil and Gas Conservation Commission
40.01211, -102.42818, 3789.4ft, 271°
02/23/2021 03:27:01 PM