

Caerus Piceance LLC
L34
Location # 334916

Mar 8, 2021 at 11:56:18 AM
39.482891,-107.659368 ±27.16m
COGCC



location

Mar 8, 2021 at 11:56:36 AM
39.482889,-107.659484 ±5.74m
COGCC



location



COLORADO
Oil & Gas Conservation
Commission
Department of Natural Resources

Caerus Piceance LLC

L34

Location # 334916

Mar 8, 2021 at 11:57:38 AM
39.482727,-107.659442 ±4.76m
COGCC



location

Mar 8, 2021 at 11:59:49 AM
39.482501,-107.659329 ±4.79m
COGCC



Staining/valve leaking



COLORADO
Oil & Gas Conservation
Commission
Department of Natural Resources

Caerus Piceance LLC
L34
Location # 334916

Mar 8, 2021 at 12:00:29 PM
39.482501,-107.659329 ±4.79m
COGCC



Staining/valve leaking

Mar 8, 2021 at 11:57:22 AM
39.482727,-107.659442 ±4.76m
COGCC



Location shows signs of lack of stabilization/compaction and debris(truck mud flaps and mud flap assembly)



COLORADO
Oil & Gas Conservation
Commission
Department of Natural Resources

Caerus Piceance LLC

L34

Location # 334916

Mar 8, 2021 at 11:57:33 AM
39.482727,-107.659442 ±4.76m
COGCC



Location shows signs of lack of
stabilization/compaction and debris(truck mud flap)

Mar 8, 2021 at 11:58:14 AM
39.482618,-107.659425 ±4.78m
COGCC



Location shows signs of lack of
stabilization/compaction

Caerus Piceance LLC

L34

Location # 334916

Mar 8, 2021 at 11:58:35 AM
39.482618,-107.659425 ±4.78m
COGCC



**Location shows signs of lack of
stabilization/compaction**

Mar 8, 2021 at 12:00:47 PM
39.482501,-107.659329 ±4.79m
COGCC



**Location shows signs of lack of
stabilization/compaction**



COLORADO
Oil & Gas Conservation
Commission
Department of Natural Resources

Caerus Piceance LLC

L34

Location # 334916

Mar 8, 2021 at 12:01:34 PM
39.482553,-107.659229 ±4.78m
COGCC



**Location shows signs of lack of
stabilization/compaction**

Mar 8, 2021 at 12:00:01 PM
39.482501,-107.659329 ±4.79m
COGCC



Cut slope not stabilized



COLORADO
Oil & Gas Conservation
Commission
Department of Natural Resources

Caerus Piceance LLC

L34

Location # 334916

Mar 8, 2021 at 12:01:15 PM
39.482553,-107.659229 ±4.78m
COGCC



Cut slope not stabilized

Mar 8, 2021 at 12:02:03 PM
39.482666,-107.659226 ±4.75m
COGCC



Sediment leaving location

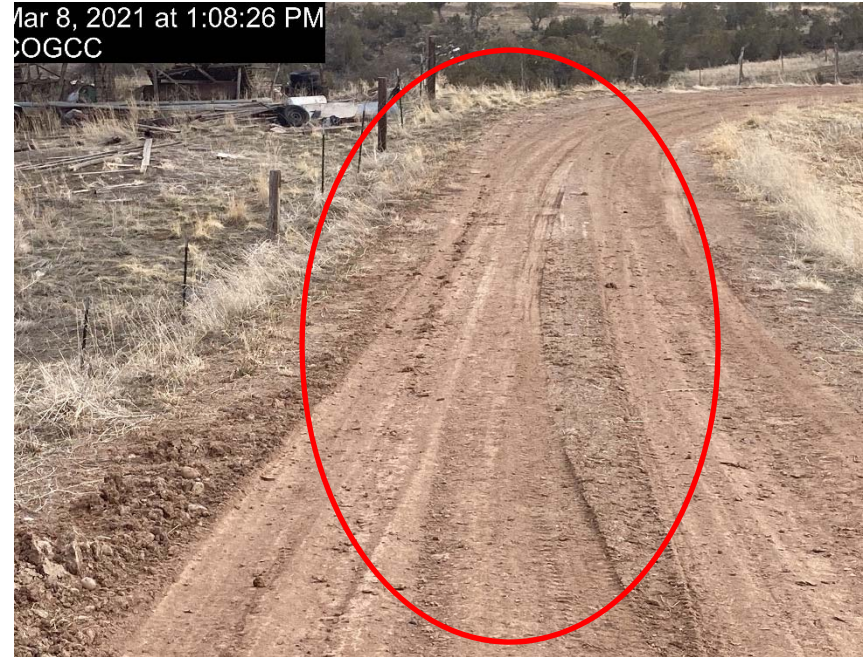


COLORADO
Oil & Gas Conservation
Commission
Department of Natural Resources

Caerus Piceance LLC
L34
Location # 334916



Sediment leaving location



Sediment leaving location

