

Project: Rio Blanco County, CO
 Site: ELU J14 496 Pad
 Well: ELU J14 FED 11D-14 496
 Wellbore: Wellbore #1
 Design: Design #2
 Latitude: 39.700899
 Longitude: -108.136228
 Ground Level: 7902.0
 RKB @ 7932.0usft (H&P #330)

PROJECT DETAILS: Rio Blanco County, CO
 Geodetic System: Universal Transverse Mercator (US Survey Feet)
 Datum: NAD 1927 - Western US
 Ellipsoid: Clarke 1866
 Zone: Zone 12N (114 W to 108 W)
 System Datum: Mean Sea Level

REFERENCE INFORMATION
 Co-ordinate (N/E) Reference: Well ELU J14 FED 11D-14 496 - Slot 11D-14, True North
 Vertical (TVD) Reference: RKB @ 7932.0usft (H&P #330)
 Section (VS) Reference: Slot - 11D-14(0.0N, 0.0E)
 Measured Depth Reference: RKB @ 7932.0usft (H&P #330)
 Calculation Method: Minimum Curvature

SECTION DETAILS

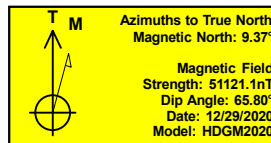
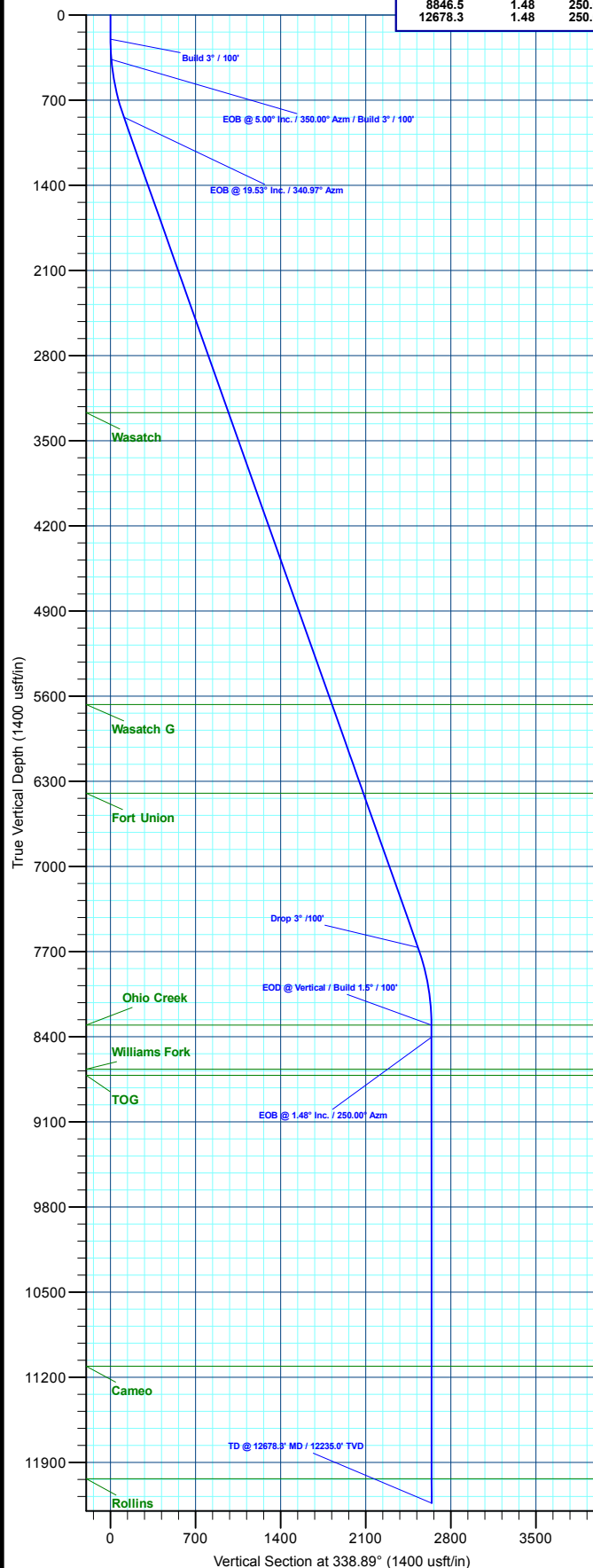
MD	Inc	Azi	TVD	+N/-S	+E/-W	Dleg	TFace	Vsect	Annotation
0.0	0.00	0.00	0.0	0.0	0.0	0.00	0.00	0.0	Build 3° / 100'
200.0	0.00	0.00	200.0	0.0	0.0	0.00	0.00	0.0	EOB @ 5.00° Inc. / 350.00° Azm / Build 3° / 100'
366.7	5.00	350.00	366.5	7.2	-1.3	3.00	350.00	7.1	EOB @ 19.53° Inc. / 340.97° Azm
853.9	19.54	340.97	841.3	105.6	-31.7	3.00	-12.01	109.9	Drop 3° / 100'
8096.9	19.54	340.97	7667.4	2395.1	-821.5	0.00	0.00	2530.3	EOB @ Vertical / Build 1.5° / 100'
8748.1	0.00	0.00	8306.0	2499.1	-857.4	3.00	180.00	2640.0	EOB @ 1.48° Inc. / 250.00° Azm
8846.5	1.48	250.00	8404.4	2498.6	-858.6	1.50	250.00	2640.2	TD @ 12678.3' MD / 12235.0' TVD
12678.3	1.48	250.00	12235.0	2464.8	-951.4	0.00	0.00	2642.1	

DESIGN TARGET DETAILS

Name	TVD	+N/-S	+E/-W	Northing	Easting	Latitude	Longitude
11D-14 - OHCR	8306.0	2499.1	-857.4	14432470.79	2445053.43	39.707757	-108.139275
11D-14 - PBHL	12235.0	2464.8	-951.4	14432433.60	2444960.60	39.707664	-108.139609

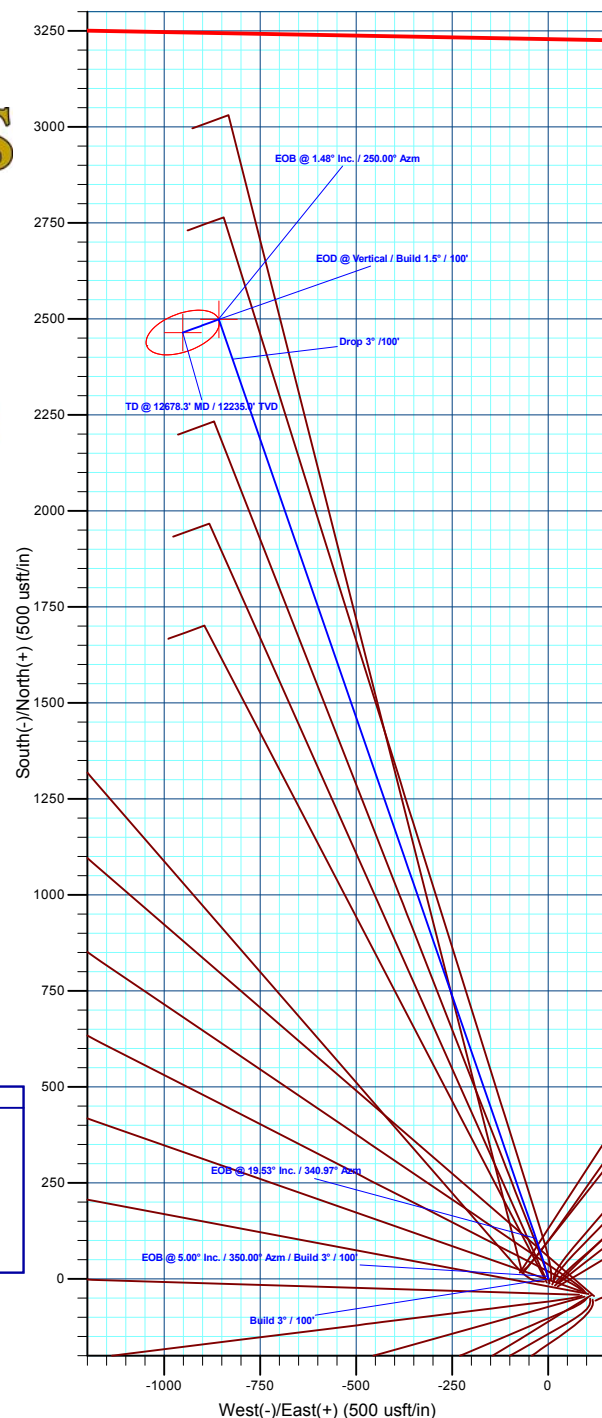
WELL DETAILS: ELU J14 FED 11D-14 496

+N/-S	+E/-W	Northing	7902.0 Easting	Latitude	Longitude	11D-14
0.0	0.0	14430000.40	2445990.20	39.700899	-108.136228	11D-14



FORMATION TOP DETAILS

TVDPath	MDPath	Formation
3269.0	3429.9	Wasatch
5669.0	5976.5	Wasatch G
6399.0	6751.0	Fort Union
8306.0	8748.1	Ohio Creek
8668.0	9110.2	Williams Fork
8718.0	9160.2	TOG
11110.0	11553.0	Cameo
12035.0	12478.3	Rollins



Plan: Design #2 (ELU J14 FED 11D-14 496/Wellbore #1)

Created By: Will Jircik

Date: 13:22, January 14 2021



Caerus Oil & Gas

Rio Blanco County, CO

ELU J14 496 Pad

ELU J14 FED 11D-14 496 - Slot 11D-14

Wellbore #1

Plan: Design #2

QES Well Planning Report

14 January, 2021



Database:	EDM 5000.1 Single User Db	Local Co-ordinate Reference:	Well ELU J14 FED 11D-14 496 - Slot 11D-14
Company:	Caerus Oil & Gas	TVD Reference:	RKB @ 7932.0usft (H&P #330)
Project:	Rio Blanco County, CO	MD Reference:	RKB @ 7932.0usft (H&P #330)
Site:	ELU J14 496 Pad	North Reference:	True
Well:	ELU J14 FED 11D-14 496	Survey Calculation Method:	Minimum Curvature
Wellbore:	Wellbore #1		
Design:	Design #2		

Project	Rio Blanco County, CO		
Map System:	Universal Transverse Mercator (US Survey Fee	System Datum:	Mean Sea Level
Geo Datum:	NAD 1927 - Western US		
Map Zone:	Zone 12N (114 W to 108 W)		

Site		ELU J14 496 Pad			
Site Position:		Northing:	14,429,993.30 usft	Latitude:	39.700881
From:	Map	Easting:	2,445,979.90 usft	Longitude:	-108.136266
Position Uncertainty:	0.0 usft	Slot Radius:	13-3/16 "	Grid Convergence:	1.83 °

Well	ELU J14 FED 11D-14 496 - Slot 11D-14					
Well Position	+N/-S	6.8 usft	Northing:	14,430,000.40 usft	Latitude:	39.700899
	+E/-W	10.5 usft	Easting:	2,445,990.20 usft	Longitude:	-108.136229
Position Uncertainty		0.0 usft	Wellhead Elevation:		Ground Level:	7,902.0 usft

Wellbore	Wellbore #1				
Magnetics	Model Name	Sample Date	Declination (°)	Dip Angle (°)	Field Strength (nT)
	HDGM2020	12/29/2020	9.37	65.80	51,121.10000000

Design	Design #2			
Audit Notes:				
Version:	Phase:	PLAN	Tie On Depth:	0.0
Vertical Section:	Depth From (TVD) (usft)	+N/-S (usft)	+E/-W (usft)	Direction (°)
	0.0	0.0	0.0	338.89

Plan Sections										
Measured Depth (usft)	Inclination (°)	Azimuth (°)	Vertical Depth (usft)	+N/-S (usft)	+E/-W (usft)	Dogleg Rate (°/100usft)	Build Rate (°/100usft)	Turn Rate (°/100usft)	TFO (°)	Target
0.0	0.00	0.00	0.0	0.0	0.0	0.00	0.00	0.00	0.00	
200.0	0.00	0.00	200.0	0.0	0.0	0.00	0.00	0.00	0.00	
366.7	5.00	350.00	366.5	7.2	-1.3	3.00	3.00	0.00	350.00	
853.9	19.54	340.97	841.3	105.6	-31.7	3.00	2.98	-1.85	-12.01	
8,096.9	19.54	340.97	7,667.4	2,395.1	-821.5	0.00	0.00	0.00	0.00	
8,748.1	0.00	0.00	8,306.0	2,499.1	-857.4	3.00	-3.00	0.00	180.00	11D-14 - OHCR
8,846.5	1.48	250.00	8,404.4	2,498.6	-858.6	1.50	1.50	-111.75	250.00	
12,678.3	1.48	250.00	12,235.0	2,464.8	-951.4	0.00	0.00	0.00	0.00	11D-14 - PBHL

Database:	EDM 5000.1 Single User Db	Local Co-ordinate Reference:	Well ELU J14 FED 11D-14 496 - Slot 11D-14
Company:	Caerus Oil & Gas	TVD Reference:	RKB @ 7932.0usft (H&P #330)
Project:	Rio Blanco County, CO	MD Reference:	RKB @ 7932.0usft (H&P #330)
Site:	ELU J14 496 Pad	North Reference:	True
Well:	ELU J14 FED 11D-14 496	Survey Calculation Method:	Minimum Curvature
Wellbore:	Wellbore #1		
Design:	Design #2		

Planned Survey									
Measured Depth (usft)	Inclination (°)	Azimuth (°)	Vertical Depth (usft)	+N/-S (usft)	+E/-W (usft)	Vertical Section (usft)	Dogleg Rate (°/100usft)	Build Rate (°/100usft)	Turn Rate (°/100usft)
0.0	0.00	0.00	0.0	0.0	0.0	0.0	0.00	0.00	0.00
100.0	0.00	0.00	100.0	0.0	0.0	0.0	0.00	0.00	0.00
Build 3° / 100'									
200.0	0.00	0.00	200.0	0.0	0.0	0.0	0.00	0.00	0.00
300.0	3.00	350.00	300.0	2.6	-0.5	2.6	3.00	3.00	0.00
EOB @ 5.00° Inc. / 350.00° Azm / Build 3° / 100'									
366.7	5.00	350.00	366.5	7.2	-1.3	7.1	3.00	3.00	0.00
400.0	5.98	348.00	399.6	10.3	-1.9	10.3	3.00	2.95	-5.99
500.0	8.95	344.65	498.8	22.9	-5.0	23.2	3.00	2.97	-3.36
600.0	11.94	342.96	597.1	40.3	-10.1	41.2	3.00	2.98	-1.69
700.0	14.93	341.94	694.4	62.4	-17.1	64.4	3.00	2.99	-1.02
800.0	17.92	341.25	790.3	89.2	-26.1	92.6	3.00	2.99	-0.69
EOB @ 19.53° Inc. / 340.97° Azm									
853.9	19.54	340.97	841.3	105.6	-31.7	109.9	3.00	3.00	-0.53
900.0	19.54	340.97	884.8	120.2	-36.7	125.3	0.00	0.00	0.00
1,000.0	19.54	340.97	979.0	151.8	-47.6	158.8	0.00	0.00	0.00
1,100.0	19.54	340.97	1,073.3	183.4	-58.5	192.2	0.00	0.00	0.00
1,200.0	19.54	340.97	1,167.5	215.0	-69.4	225.6	0.00	0.00	0.00
1,300.0	19.54	340.97	1,261.7	246.6	-80.3	259.0	0.00	0.00	0.00
1,400.0	19.54	340.97	1,356.0	278.2	-91.2	292.4	0.00	0.00	0.00
1,500.0	19.54	340.97	1,450.2	309.8	-102.1	325.8	0.00	0.00	0.00
1,600.0	19.54	340.97	1,544.5	341.5	-113.0	359.3	0.00	0.00	0.00
1,700.0	19.54	340.97	1,638.7	373.1	-123.9	392.7	0.00	0.00	0.00
1,800.0	19.54	340.97	1,733.0	404.7	-134.9	426.1	0.00	0.00	0.00
1,900.0	19.54	340.97	1,827.2	436.3	-145.8	459.5	0.00	0.00	0.00
2,000.0	19.54	340.97	1,921.4	467.9	-156.7	492.9	0.00	0.00	0.00
2,100.0	19.54	340.97	2,015.7	499.5	-167.6	526.3	0.00	0.00	0.00
2,200.0	19.54	340.97	2,109.9	531.1	-178.5	559.8	0.00	0.00	0.00
2,300.0	19.54	340.97	2,204.2	562.7	-189.4	593.2	0.00	0.00	0.00
2,400.0	19.54	340.97	2,298.4	594.3	-200.3	626.6	0.00	0.00	0.00
2,500.0	19.54	340.97	2,392.7	625.9	-211.2	660.0	0.00	0.00	0.00
2,600.0	19.54	340.97	2,486.9	657.6	-222.1	693.4	0.00	0.00	0.00
2,700.0	19.54	340.97	2,581.2	689.2	-233.0	726.8	0.00	0.00	0.00
2,800.0	19.54	340.97	2,675.4	720.8	-243.9	760.2	0.00	0.00	0.00
2,900.0	19.54	340.97	2,769.6	752.4	-254.8	793.7	0.00	0.00	0.00
3,000.0	19.54	340.97	2,863.9	784.0	-265.7	827.1	0.00	0.00	0.00
3,100.0	19.54	340.97	2,958.1	815.6	-276.6	860.5	0.00	0.00	0.00
3,200.0	19.54	340.97	3,052.4	847.2	-287.5	893.9	0.00	0.00	0.00
3,300.0	19.54	340.97	3,146.6	878.8	-298.4	927.3	0.00	0.00	0.00
3,400.0	19.54	340.97	3,240.9	910.4	-309.3	960.7	0.00	0.00	0.00
Wasatch									
3,429.9	19.54	340.97	3,269.0	919.9	-312.6	970.7	0.00	0.00	0.00
3,500.0	19.54	340.97	3,335.1	942.0	-320.2	994.2	0.00	0.00	0.00
3,600.0	19.54	340.97	3,429.3	973.7	-331.1	1,027.6	0.00	0.00	0.00
3,700.0	19.54	340.97	3,523.6	1,005.3	-342.1	1,061.0	0.00	0.00	0.00
3,800.0	19.54	340.97	3,617.8	1,036.9	-353.0	1,094.4	0.00	0.00	0.00
3,900.0	19.54	340.97	3,712.1	1,068.5	-363.9	1,127.8	0.00	0.00	0.00
4,000.0	19.54	340.97	3,806.3	1,100.1	-374.8	1,161.2	0.00	0.00	0.00
4,100.0	19.54	340.97	3,900.6	1,131.7	-385.7	1,194.7	0.00	0.00	0.00
4,200.0	19.54	340.97	3,994.8	1,163.3	-396.6	1,228.1	0.00	0.00	0.00
4,300.0	19.54	340.97	4,089.0	1,194.9	-407.5	1,261.5	0.00	0.00	0.00
4,400.0	19.54	340.97	4,183.3	1,226.5	-418.4	1,294.9	0.00	0.00	0.00
4,500.0	19.54	340.97	4,277.5	1,258.1	-429.3	1,328.3	0.00	0.00	0.00
4,600.0	19.54	340.97	4,371.8	1,289.8	-440.2	1,361.7	0.00	0.00	0.00

Database:	EDM 5000.1 Single User Db	Local Co-ordinate Reference:	Well ELU J14 FED 11D-14 496 - Slot 11D-14
Company:	Caerus Oil & Gas	TVD Reference:	RKB @ 7932.0usft (H&P #330)
Project:	Rio Blanco County, CO	MD Reference:	RKB @ 7932.0usft (H&P #330)
Site:	ELU J14 496 Pad	North Reference:	True
Well:	ELU J14 FED 11D-14 496	Survey Calculation Method:	Minimum Curvature
Wellbore:	Wellbore #1		
Design:	Design #2		

Planned Survey									
Measured Depth (usft)	Inclination (°)	Azimuth (°)	Vertical Depth (usft)	+N/-S (usft)	+E/-W (usft)	Vertical Section (usft)	Dogleg Rate (°/100usft)	Build Rate (°/100usft)	Turn Rate (°/100usft)
4,700.0	19.54	340.97	4,466.0	1,321.4	-451.1	1,395.2	0.00	0.00	0.00
4,800.0	19.54	340.97	4,560.3	1,353.0	-462.0	1,428.6	0.00	0.00	0.00
4,900.0	19.54	340.97	4,654.5	1,384.6	-472.9	1,462.0	0.00	0.00	0.00
5,000.0	19.54	340.97	4,748.8	1,416.2	-483.8	1,495.4	0.00	0.00	0.00
5,100.0	19.54	340.97	4,843.0	1,447.8	-494.7	1,528.8	0.00	0.00	0.00
5,200.0	19.54	340.97	4,937.2	1,479.4	-505.6	1,562.2	0.00	0.00	0.00
5,300.0	19.54	340.97	5,031.5	1,511.0	-516.5	1,595.7	0.00	0.00	0.00
5,400.0	19.54	340.97	5,125.7	1,542.6	-527.4	1,629.1	0.00	0.00	0.00
5,500.0	19.54	340.97	5,220.0	1,574.2	-538.3	1,662.5	0.00	0.00	0.00
5,600.0	19.54	340.97	5,314.2	1,605.9	-549.2	1,695.9	0.00	0.00	0.00
5,700.0	19.54	340.97	5,408.5	1,637.5	-560.2	1,729.3	0.00	0.00	0.00
5,800.0	19.54	340.97	5,502.7	1,669.1	-571.1	1,762.7	0.00	0.00	0.00
5,900.0	19.54	340.97	5,596.9	1,700.7	-582.0	1,796.2	0.00	0.00	0.00
Wasatch G									
5,976.5	19.54	340.97	5,669.0	1,724.9	-590.3	1,821.7	0.00	0.00	0.00
6,000.0	19.54	340.97	5,691.2	1,732.3	-592.9	1,829.6	0.00	0.00	0.00
6,100.0	19.54	340.97	5,785.4	1,763.9	-603.8	1,863.0	0.00	0.00	0.00
6,200.0	19.54	340.97	5,879.7	1,795.5	-614.7	1,896.4	0.00	0.00	0.00
6,300.0	19.54	340.97	5,973.9	1,827.1	-625.6	1,929.8	0.00	0.00	0.00
6,400.0	19.54	340.97	6,068.2	1,858.7	-636.5	1,963.2	0.00	0.00	0.00
6,500.0	19.54	340.97	6,162.4	1,890.3	-647.4	1,996.7	0.00	0.00	0.00
6,600.0	19.54	340.97	6,256.7	1,922.0	-658.3	2,030.1	0.00	0.00	0.00
6,700.0	19.54	340.97	6,350.9	1,953.6	-669.2	2,063.5	0.00	0.00	0.00
Fort Union									
6,751.0	19.54	340.97	6,399.0	1,969.7	-674.8	2,080.5	0.00	0.00	0.00
6,800.0	19.54	340.97	6,445.1	1,985.2	-680.1	2,096.9	0.00	0.00	0.00
6,900.0	19.54	340.97	6,539.4	2,016.8	-691.0	2,130.3	0.00	0.00	0.00
7,000.0	19.54	340.97	6,633.6	2,048.4	-701.9	2,163.7	0.00	0.00	0.00
7,100.0	19.54	340.97	6,727.9	2,080.0	-712.8	2,197.2	0.00	0.00	0.00
7,200.0	19.54	340.97	6,822.1	2,111.6	-723.7	2,230.6	0.00	0.00	0.00
7,300.0	19.54	340.97	6,916.4	2,143.2	-734.6	2,264.0	0.00	0.00	0.00
7,400.0	19.54	340.97	7,010.6	2,174.8	-745.5	2,297.4	0.00	0.00	0.00
7,500.0	19.54	340.97	7,104.8	2,206.4	-756.4	2,330.8	0.00	0.00	0.00
7,600.0	19.54	340.97	7,199.1	2,238.1	-767.3	2,364.2	0.00	0.00	0.00
7,700.0	19.54	340.97	7,293.3	2,269.7	-778.3	2,397.7	0.00	0.00	0.00
7,800.0	19.54	340.97	7,387.6	2,301.3	-789.2	2,431.1	0.00	0.00	0.00
7,900.0	19.54	340.97	7,481.8	2,332.9	-800.1	2,464.5	0.00	0.00	0.00
8,000.0	19.54	340.97	7,576.1	2,364.5	-811.0	2,497.9	0.00	0.00	0.00
Drop 3° /100'									
8,096.9	19.54	340.97	7,667.4	2,395.1	-821.5	2,530.3	0.00	0.00	0.00
8,100.0	19.44	340.97	7,670.3	2,396.1	-821.9	2,531.3	3.00	-3.00	0.00
8,200.0	16.44	340.97	7,765.4	2,425.2	-831.9	2,562.1	3.00	-3.00	0.00
8,300.0	13.44	340.97	7,862.0	2,449.6	-840.3	2,587.9	3.00	-3.00	0.00
8,400.0	10.44	340.97	7,959.9	2,469.2	-847.1	2,608.5	3.00	-3.00	0.00
8,500.0	7.44	340.97	8,058.6	2,483.8	-852.1	2,624.1	3.00	-3.00	0.00
8,600.0	4.44	340.97	8,158.1	2,493.6	-855.5	2,634.4	3.00	-3.00	0.00
8,700.0	1.44	340.97	8,258.0	2,498.5	-857.2	2,639.5	3.00	-3.00	0.00
EOD @ Vertical / Build 1.5° / 100' - Ohio Creek									
8,748.1	0.00	0.00	8,306.0	2,499.1	-857.4	2,640.1	3.00	-3.00	0.00
8,800.0	0.78	250.00	8,357.9	2,498.9	-857.7	2,640.2	1.50	1.50	0.00
EOB @ 1.48° Inc. / 250.00° Azm									
8,846.5	1.48	250.00	8,404.4	2,498.6	-858.6	2,640.2	1.50	1.50	0.00
8,900.0	1.48	250.00	8,457.9	2,498.1	-859.9	2,640.2	0.00	0.00	0.00

Database:	EDM 5000.1 Single User Db	Local Co-ordinate Reference:	Well ELU J14 FED 11D-14 496 - Slot 11D-14
Company:	Caerus Oil & Gas	TVD Reference:	RKB @ 7932.0usft (H&P #330)
Project:	Rio Blanco County, CO	MD Reference:	RKB @ 7932.0usft (H&P #330)
Site:	ELU J14 496 Pad	North Reference:	True
Well:	ELU J14 FED 11D-14 496	Survey Calculation Method:	Minimum Curvature
Wellbore:	Wellbore #1		
Design:	Design #2		

Planned Survey									
Measured Depth (usft)	Inclination (°)	Azimuth (°)	Vertical Depth (usft)	+N/-S (usft)	+E/-W (usft)	Vertical Section (usft)	Dogleg Rate (°/100usft)	Build Rate (°/100usft)	Turn Rate (°/100usft)
9,000.0	1.48	250.00	8,557.9	2,497.3	-862.3	2,640.2	0.00	0.00	0.00
9,100.0	1.48	250.00	8,657.9	2,496.4	-864.7	2,640.3	0.00	0.00	0.00
Williams Fork									
9,110.2	1.48	250.00	8,668.0	2,496.3	-865.0	2,640.3	0.00	0.00	0.00
TOG									
9,160.2	1.48	250.00	8,718.0	2,495.9	-866.2	2,640.3	0.00	0.00	0.00
9,200.0	1.48	250.00	8,757.8	2,495.5	-867.1	2,640.3	0.00	0.00	0.00
9,300.0	1.48	250.00	8,857.8	2,494.6	-869.6	2,640.4	0.00	0.00	0.00
9,400.0	1.48	250.00	8,957.8	2,493.7	-872.0	2,640.4	0.00	0.00	0.00
9,500.0	1.48	250.00	9,057.7	2,492.9	-874.4	2,640.5	0.00	0.00	0.00
9,600.0	1.48	250.00	9,157.7	2,492.0	-876.8	2,640.5	0.00	0.00	0.00
9,700.0	1.48	250.00	9,257.7	2,491.1	-879.2	2,640.6	0.00	0.00	0.00
9,800.0	1.48	250.00	9,357.6	2,490.2	-881.7	2,640.6	0.00	0.00	0.00
9,900.0	1.48	250.00	9,457.6	2,489.3	-884.1	2,640.7	0.00	0.00	0.00
10,000.0	1.48	250.00	9,557.6	2,488.4	-886.5	2,640.7	0.00	0.00	0.00
10,100.0	1.48	250.00	9,657.5	2,487.6	-888.9	2,640.8	0.00	0.00	0.00
10,200.0	1.48	250.00	9,757.5	2,486.7	-891.4	2,640.8	0.00	0.00	0.00
10,300.0	1.48	250.00	9,857.5	2,485.8	-893.8	2,640.9	0.00	0.00	0.00
10,400.0	1.48	250.00	9,957.4	2,484.9	-896.2	2,640.9	0.00	0.00	0.00
10,500.0	1.48	250.00	10,057.4	2,484.0	-898.6	2,641.0	0.00	0.00	0.00
10,600.0	1.48	250.00	10,157.4	2,483.2	-901.0	2,641.0	0.00	0.00	0.00
10,700.0	1.48	250.00	10,257.3	2,482.3	-903.5	2,641.1	0.00	0.00	0.00
10,800.0	1.48	250.00	10,357.3	2,481.4	-905.9	2,641.1	0.00	0.00	0.00
10,900.0	1.48	250.00	10,457.3	2,480.5	-908.3	2,641.2	0.00	0.00	0.00
11,000.0	1.48	250.00	10,557.2	2,479.6	-910.7	2,641.2	0.00	0.00	0.00
11,100.0	1.48	250.00	10,657.2	2,478.8	-913.1	2,641.3	0.00	0.00	0.00
11,200.0	1.48	250.00	10,757.2	2,477.9	-915.6	2,641.3	0.00	0.00	0.00
11,300.0	1.48	250.00	10,857.1	2,477.0	-918.0	2,641.4	0.00	0.00	0.00
11,400.0	1.48	250.00	10,957.1	2,476.1	-920.4	2,641.4	0.00	0.00	0.00
11,500.0	1.48	250.00	11,057.1	2,475.2	-922.8	2,641.5	0.00	0.00	0.00
Cameo									
11,553.0	1.48	250.00	11,110.0	2,474.8	-924.1	2,641.5	0.00	0.00	0.00
11,600.0	1.48	250.00	11,157.0	2,474.3	-925.2	2,641.5	0.00	0.00	0.00
11,700.0	1.48	250.00	11,257.0	2,473.5	-927.7	2,641.6	0.00	0.00	0.00
11,800.0	1.48	250.00	11,357.0	2,472.6	-930.1	2,641.6	0.00	0.00	0.00
11,900.0	1.48	250.00	11,456.9	2,471.7	-932.5	2,641.7	0.00	0.00	0.00
12,000.0	1.48	250.00	11,556.9	2,470.8	-934.9	2,641.7	0.00	0.00	0.00
12,100.0	1.48	250.00	11,656.9	2,469.9	-937.4	2,641.8	0.00	0.00	0.00
12,200.0	1.48	250.00	11,756.8	2,469.1	-939.8	2,641.8	0.00	0.00	0.00
12,300.0	1.48	250.00	11,856.8	2,468.2	-942.2	2,641.9	0.00	0.00	0.00
12,400.0	1.48	250.00	11,956.8	2,467.3	-944.6	2,641.9	0.00	0.00	0.00
Rollins									
12,478.3	1.48	250.00	12,035.0	2,466.6	-946.5	2,642.0	0.00	0.00	0.00
12,500.0	1.48	250.00	12,056.7	2,466.4	-947.0	2,642.0	0.00	0.00	0.00
12,600.0	1.48	250.00	12,156.7	2,465.5	-949.5	2,642.0	0.00	0.00	0.00
TD @ 12678.3' MD / 12235.0' TVD									
12,678.3	1.48	250.00	12,235.0	2,464.8	-951.4	2,642.1	0.00	0.00	0.00

Database:	EDM 5000.1 Single User Db	Local Co-ordinate Reference:	Well ELU J14 FED 11D-14 496 - Slot 11D-14
Company:	Caerus Oil & Gas	TVD Reference:	RKB @ 7932.0usft (H&P #330)
Project:	Rio Blanco County, CO	MD Reference:	RKB @ 7932.0usft (H&P #330)
Site:	ELU J14 496 Pad	North Reference:	True
Well:	ELU J14 FED 11D-14 496	Survey Calculation Method:	Minimum Curvature
Wellbore:	Wellbore #1		
Design:	Design #2		

Design Targets									
Target Name									
- hit/miss target	Dip Angle	Dip Dir.	TVD	+N/-S	+E/-W	Northing	Easting	Latitude	Longitude
- Shape	(°)	(°)	(usft)	(usft)	(usft)	(usft)	(usft)		
11D-14 - OHCR	0.00	0.00	8,306.0	2,499.1	-857.4	14,432,470.79	2,445,053.43	39.707758	-108.139275
- plan hits target center									
- Point									
11D-14 - PBHL	0.00	0.00	12,235.0	2,464.8	-951.4	14,432,433.60	2,444,960.60	39.707664	-108.139609
- plan hits target center									
- Ellipse (radii L100.0 W50.0 on 250.00 azi)									

Formations						
Measured Depth (usft)	Vertical Depth (usft)	Name	Lithology	Dip (°)	Dip Direction (°)	
3,429.9	3,269.0	Wasatch				
5,976.5	5,669.0	Wasatch G				
6,751.0	6,399.0	Fort Union				
8,748.1	8,306.0	Ohio Creek				
9,110.2	8,668.0	Williams Fork				
9,160.2	8,718.0	TOG				
11,553.0	11,110.0	Cameo				
12,478.3	12,035.0	Rollins				

Plan Annotations				
Measured Depth (usft)	Vertical Depth (usft)	Local Coordinates		Comment
		+N/-S (usft)	+E/-W (usft)	
200.0	200.0	0.0	0.0	Build 3° / 100'
366.7	366.5	7.2	-1.3	EOB @ 5.00° Inc. / 350.00° Azm / Build 3° / 100'
853.9	841.3	105.6	-31.7	EOB @ 19.53° Inc. / 340.97° Azm
8,096.9	7,667.4	2,395.1	-821.5	Drop 3° / 100'
8,748.1	8,306.0	2,499.1	-857.4	EOD @ Vertical / Build 1.5° / 100'
8,846.5	8,404.4	2,498.6	-858.6	EOB @ 1.48° Inc. / 250.00° Azm
12,678.3	12,235.0	2,464.8	-951.4	TD @ 12678.3' MD / 12235.0' TVD