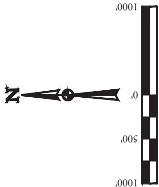


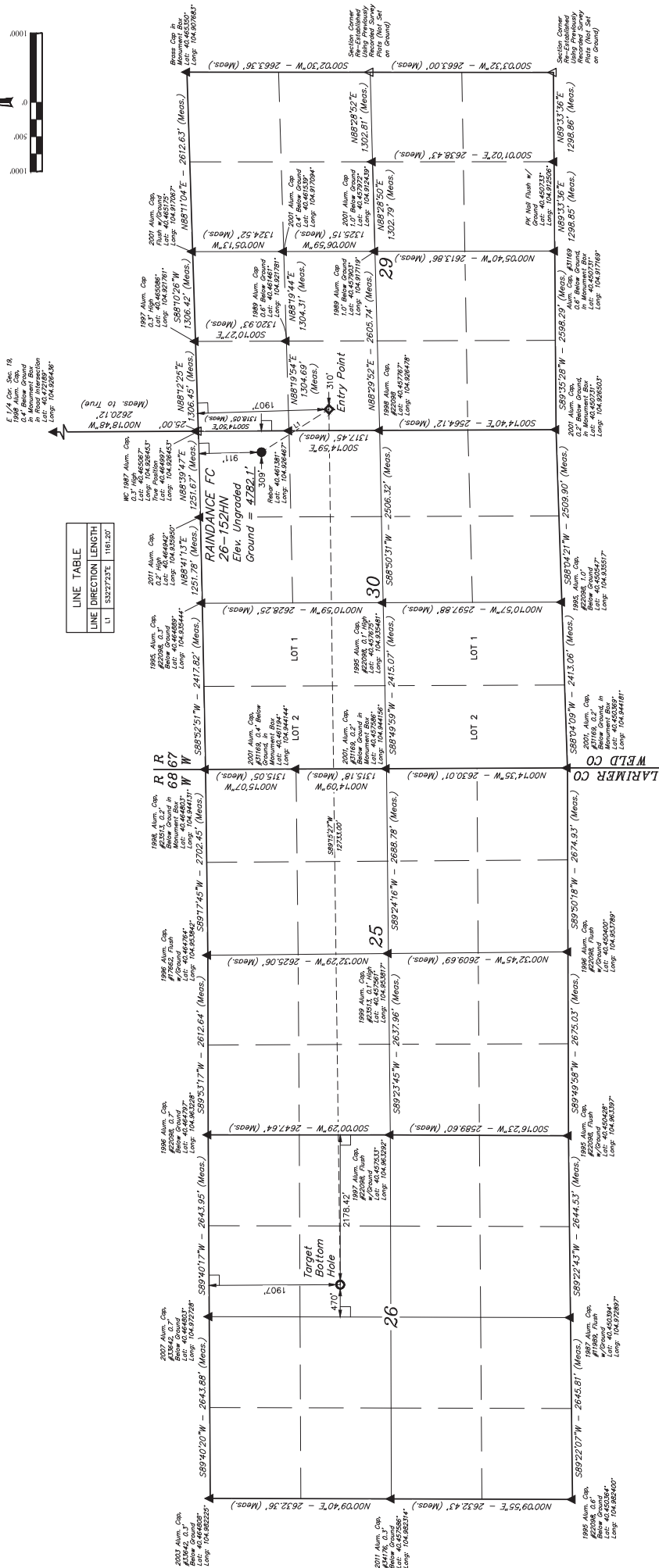
T6N, R67W, 6th P.M.

GREAT WESTERN OPERATING COMPANY  
RAINANCE FC 26-152HN  
NE 1/4 NE 1/4, SECTION 30, T6N, R67W, 6th P.M.  
WELD COUNTY, COLORADO

UNITED STATES DEPARTMENT OF THE INTERIOR  
BUREAU OF LAND MANAGEMENT  
BASIS OF BEARINGS AND DISTANCES  
BASIS OF ELEVATION  
USGS COOPERATIVE BASE NETWORK CONTROL STATION  
DESIGNATION "VERMILYEA", NGS DATA SHEET LISTS THE  
NAD 83 ELEVATION AS BEING 5029 FEET.



LINE TABLE		
LINE	DIRECTION	LENGTH
L1	S32°27'23"E	1181.20'



THIS IS TO CERTIFY THAT THE ABOVE  
SURVEY WAS MADE IN ACCORDANCE  
WITH THE ACTS OF CONGRESS  
AND THAT THE SAME ARE TRUE AND  
CORRECT TO THE BEST OF MY  
KNOWLEDGE AND BELIEF.

REV 3.1 10-26-16 K.B. (SHL-EP) BHS & NAME CHANGE

POOP = L1		
NAD (SURFACE) LOCATION	NAD (ENTRY POINT)	NAD (TARGET BOTTOM HOLE)
UTM ZONE 18Q UTM COORDINATES Easting = 1045529.26 (1045529.26) Northing = 1045551.37 (1045551.37)	UTM ZONE 18Q UTM COORDINATES Easting = 1045529.26 (1045529.26) Northing = 1045551.37 (1045551.37)	UTM ZONE 18Q UTM COORDINATES Easting = 1045529.26 (1045529.26) Northing = 1045551.37 (1045551.37)
NAD (SURFACE) LOCATION	NAD (ENTRY POINT)	NAD (TARGET BOTTOM HOLE)
UTM ZONE 18Q UTM COORDINATES Easting = 1045529.26 (1045529.26) Northing = 1045551.37 (1045551.37)	UTM ZONE 18Q UTM COORDINATES Easting = 1045529.26 (1045529.26) Northing = 1045551.37 (1045551.37)	UTM ZONE 18Q UTM COORDINATES Easting = 1045529.26 (1045529.26) Northing = 1045551.37 (1045551.37)

UTM IS L1  
Corporate Office: 435 South 200 East  
Vernal, UT 84078 • (435) 798-1017  
STATION NO. 1045529.26  
DRAWN BY: CHAD MEYERS, L.C.  
K.B. 10/14/16  
SCALE: 1" = 1000'

WELL LOCATION PLAT

LEGEND:  
= 90° SWELL  
= PROPOSED WELLHEAD  
= TARGET BOTTOM HOLE  
= SECTION CORNERS LOCATED (NAD 83)  
= SECTION CORNERS RE-ESTABLISHED (Not Set on Grounds) (NAD 83)