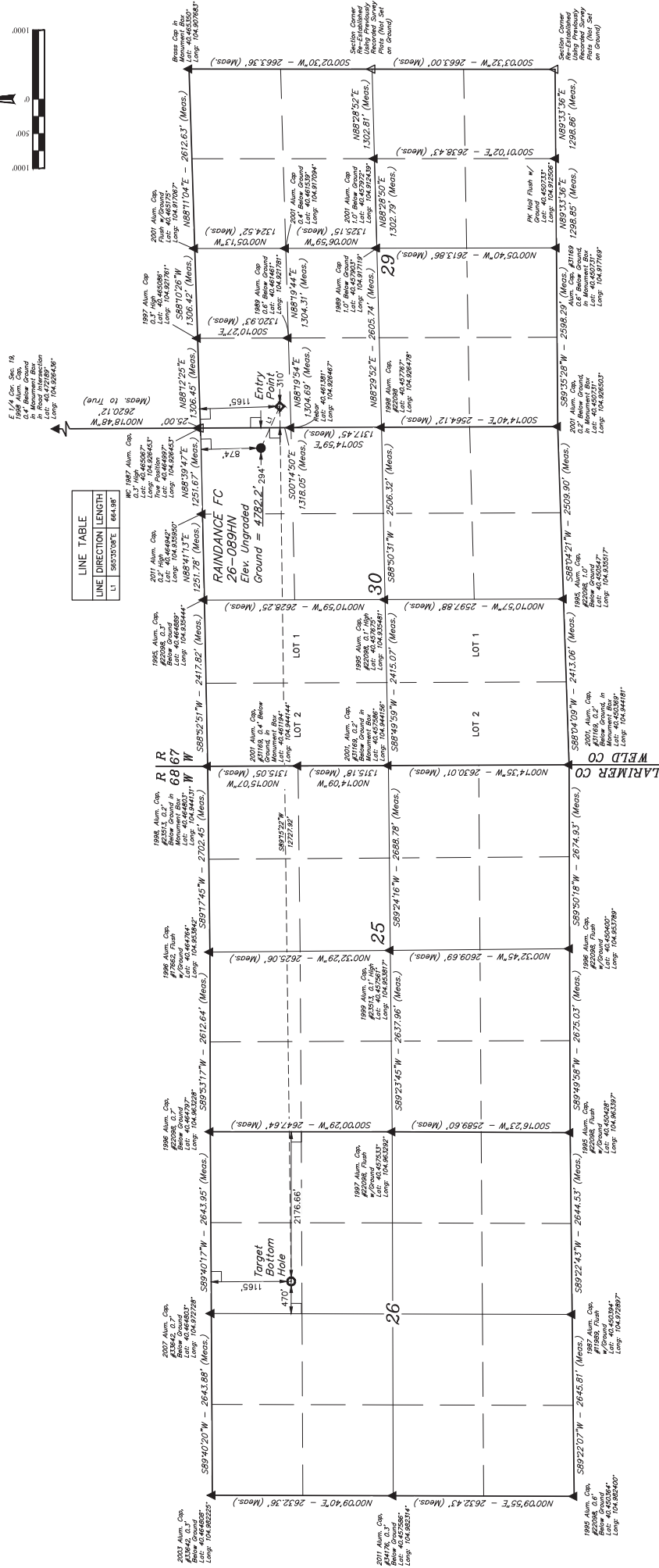


GREAT WESTERN OPERATING COMPANY
RAINDANCE FC 26-089HN
NE 1/4 NE 1/4, SECTION 30, T6N, R67W, 6th P.M.
WELD COUNTY, COLORADO

BASIS OF BEARINGS
BASIS OF BEARINGS IS A G.P.S. OBSERVATION

BASIS OF ELEVATION
USGS COOPERATIVE BASE NETWORK CONTROL STATION,
DESIGNATION "VERMILYEA". NGS DATA SHEET LISTS THE
NAVD 88 ELEVATION AS BEING 5026 FEET.



THIS IS TO CERTIFY THAT THE ABOVE
NOTES OF ACTUAL SURVEYS MADE
AND THAT THE SAME ARE TRUE AND
CORRECT TO THE BEST OF MY
KNOWLEDGE AND BELIEF.

REV: 3 10-26-16 K.B. (SHL, EP, TBH & NAME CHANGE)

$$f(x) = \begin{cases} 1 & \text{if } x \in \mathbb{Q} \\ 0 & \text{if } x \notin \mathbb{Q} \end{cases} \quad \text{and} \quad g(x) = \begin{cases} 1 & \text{if } x \in \mathbb{Q} \\ 0 & \text{if } x \notin \mathbb{Q} \end{cases}$$

PDOP = 1.3

Corporate Office • 85 South 200 East
Orem, UT 84053
801.224.2200
www.oremschools.org

UTAH
Vernal, UT 84078 • (435) 789-1017

77° (104.971075)	SURVEYED BY		CHAD MEIERS, J.C.	10-14-16	SCALE
------------------	-------------	--	-------------------	----------	-------

1" = 1000'	02-25-16	K.B.	
DRAWN BY			

WELL LOCATION PLAT
