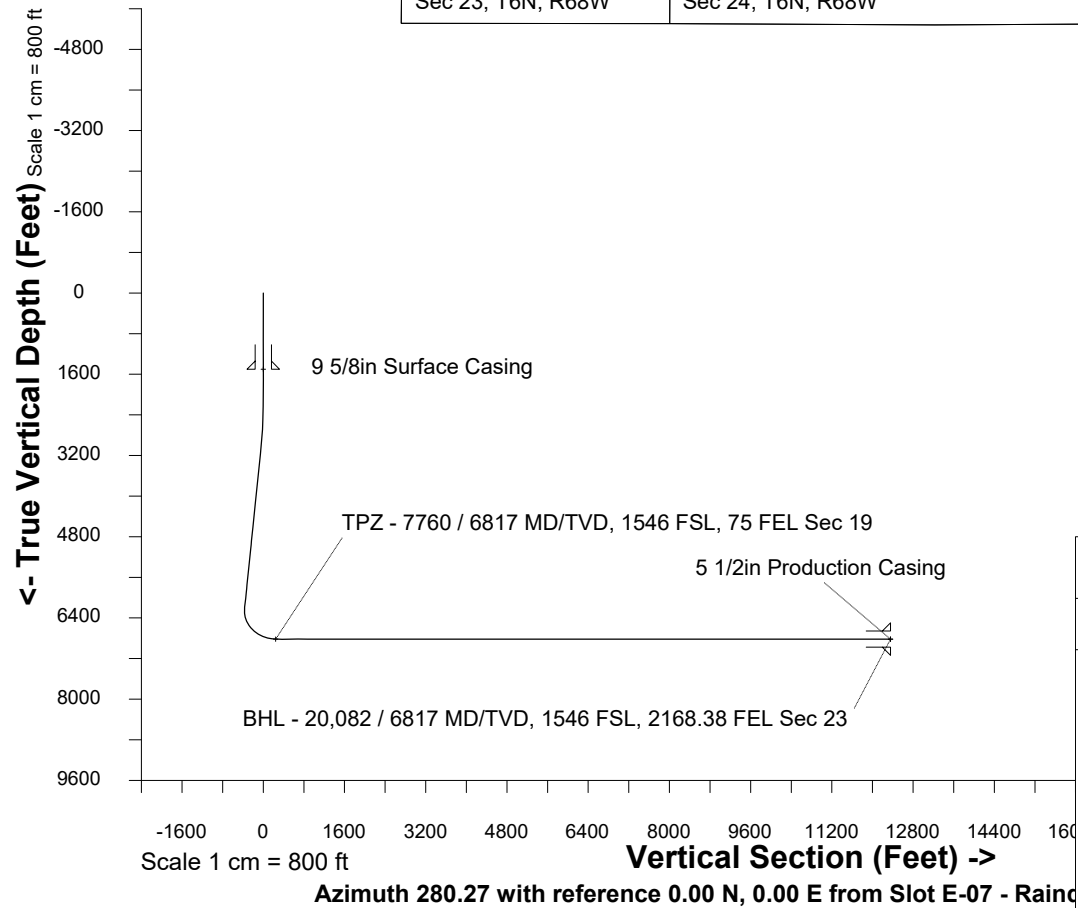
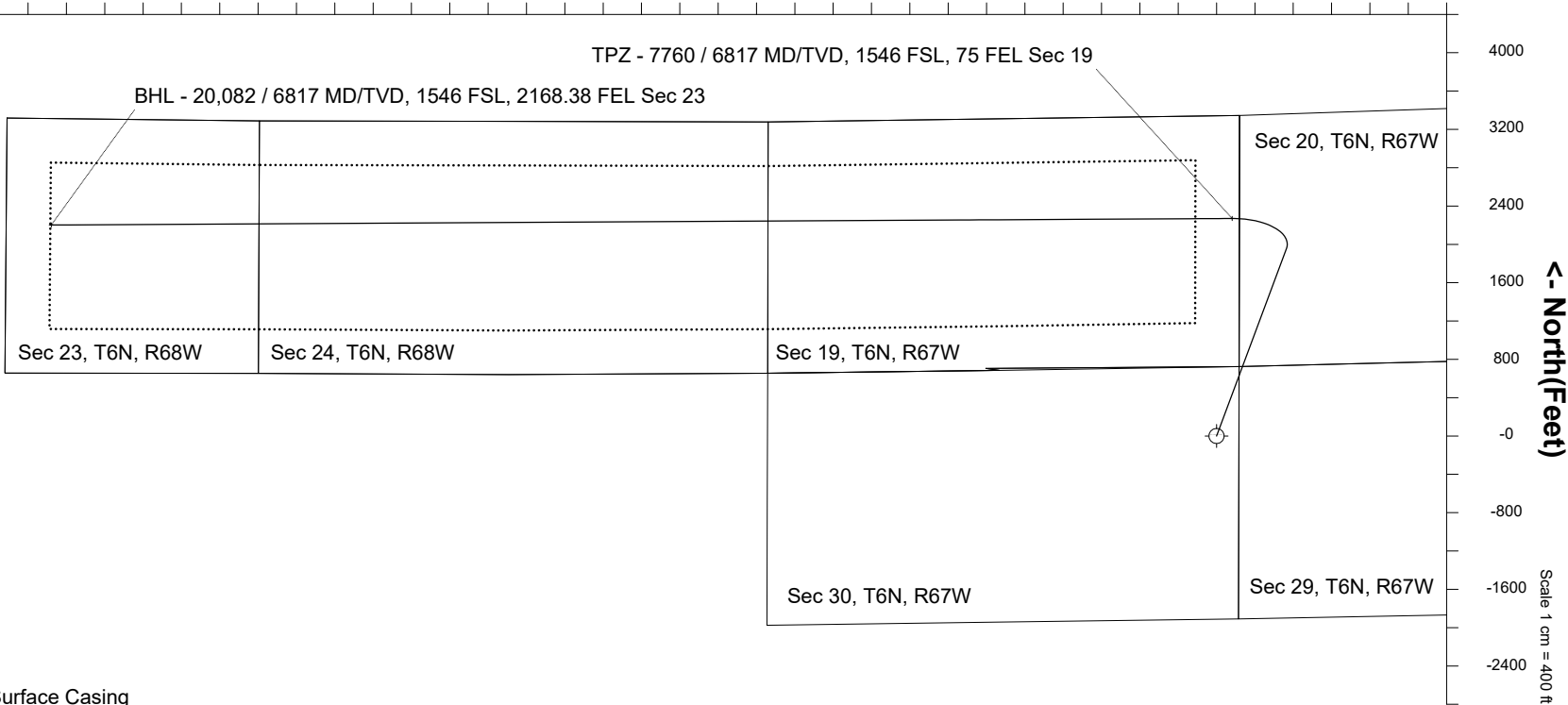
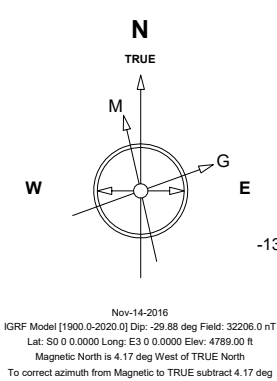


Great Western Operating Company, LLC					
Location	Colorado	Slot	Slot E-07 - Raindance FC 23-289HNX		
Field	Wattenburg	Well	Raindance FC 23-289HNX		
Installation	Raindance	Wellbore	Raindance FC 23-289HNX (PWB)		

Created by	admin
Date plotted	12-Dec-2018
Plot reference is Raindance FC 23-289HNX (PWB).	
Ref wellpath is Raindance FC 23-289HNX (PWP#1).	
Coordinates are in Feet reference Slot E-07 - Raindance FC 23-289HNX.	
True Vertical Depths are reference Rig Datum.	
Measured Depths are reference Rig Datum.	
Rig Datum: Planned Datum #1	
Rig Datum to Mean Sea Level: 4809.00 ft.	
Plot North is aligned to TRUE North.	



WELL PROFILE DATA								
Point	MD	Inc	Azi	TVD	North	East	deg/100ft	V. Sect
Tie on	0.00	0.00	0.00	0.00	S 0.00	W 0.00		0.00
KOP	2101.00	0.00	20.46	2101.00	S 0.00	W 0.00	0.00	0.00
End of Build	3100.87	30.00	20.46	3055.82	N 239.67	E 89.43	3.00	-45.29
End of Hold	6758.29	30.00	20.46	6223.36	N 1952.78	E 728.68	0.00	-369.00
Target TPZ - ...Sec 19	7760.46	90.00	269.68	6817.00	N 2270.06	E 163.05	10.00	244.12
T.D. & Target BHL... 23	20081.83	90.00	269.68	6817.00	N 2202.01	W 12158.14	0.00	12355.94

Header Information	measured depth (ft)	inclination (°)	azimuth (°)	true vertical depth (ft)	northing +N/-S (ft)	easting +E/-W (ft)
Operator Name	0	0.00	0.00	0	0.00	0.00
Great Western Oil & Gas Company LLC	100	0.00	0.00	100	0.00	0.00
Operator Number	200	0.00	0.00	200	0.00	0.00
10110	300	0.00	0.00	300	0.00	0.00
Well Name and Number	400	0.00	0.00	400	0.00	0.00
Raindance FC 23-289HNX	500	0.00	0.00	500	0.00	0.00
API Number (if available)	600	0.00	0.00	600	0.00	0.00
	700	0.00	0.00	700	0.00	0.00
Location: QQ SEC TWP RGE	800	0.00	0.00	800	0.00	0.00
NENE 30 6N 67W	900	0.00	0.00	900	0.00	0.00
Citing Type: Planned or Actual	1000	0.00	0.00	1000	0.00	0.00
Planned	1100	0.00	0.00	1100	0.00	0.00
Deviation Indicator	1200	0.00	0.00	1200	0.00	0.00
Horizontal ▼	1300	0.00	0.00	1300	0.00	0.00
North Reference	1400	0.00	0.00	1400	0.00	0.00
True ▼	1500	0.00	0.00	1500	0.00	0.00
Grid Type	1600	0.00	0.00	1600	0.00	0.00
▼	1700	0.00	0.00	1700	0.00	0.00
	1800	0.00	0.00	1800	0.00	0.00
	1900	0.00	0.00	1900	0.00	0.00
	2000	0.00	0.00	2000	0.00	0.00
	2100	0.00	0.00	2100	0.00	0.00
	2200	2.97	20.46	2200	2.40	0.90
	2300	5.97	20.46	2300	9.70	3.62
	2400	8.97	20.46	2399	21.88	8.17
	2500	11.97	20.46	2497	38.91	14.52
	2600	14.97	20.46	2594	60.73	22.66
	2700	17.97	20.46	2690	87.29	32.57
	2800	20.97	20.46	2785	118.51	44.22

2900	23.97	20.46	2877	154.32	57.58
3000	26.97	20.46	2967	194.60	72.62
3100	29.97	20.46	3055	239.26	89.28
3200	30.00	20.46	3142	286.10	106.76
3300	30.00	20.46	3228	332.94	124.24
3400	30.00	20.46	3315	379.78	141.71
3500	30.00	20.46	3401	426.62	159.19
3600	30.00	20.46	3488	473.46	176.67
3700	30.00	20.46	3575	520.29	194.15
3800	30.00	20.46	3661	567.13	211.63
3900	30.00	20.46	3748	613.97	229.10
4000	30.00	20.46	3835	660.81	246.58
4100	30.00	20.46	3921	707.65	264.06
4200	30.00	20.46	4008	754.49	281.54
4300	30.00	20.46	4094	801.33	299.02
4400	30.00	20.46	4181	848.17	316.50
4500	30.00	20.46	4268	895.01	333.97
4600	30.00	20.46	4354	941.85	351.45
4700	30.00	20.46	4441	988.69	368.93
4800	30.00	20.46	4527	1035.53	386.41
4900	30.00	20.46	4614	1082.37	403.89
5000	30.00	20.46	4701	1129.21	421.36
5100	30.00	20.46	4787	1176.05	438.84
5200	30.00	20.46	4874	1222.89	456.32
5300	30.00	20.46	4960	1269.73	473.80
5400	30.00	20.46	5047	1316.56	491.28
5500	30.00	20.46	5134	1363.40	508.75
5600	30.00	20.46	5220	1410.24	526.23
5700	30.00	20.46	5307	1457.08	543.71
5800	30.00	20.46	5393	1503.92	561.19
5900	30.00	20.46	5480	1550.76	578.67
6000	30.00	20.46	5567	1597.60	596.15
6100	30.00	20.46	5653	1644.44	613.62
6200	30.00	20.46	5740	1691.28	631.10

6300	30.00	20.46	5826	1738.12	648.58
6400	30.00	20.46	5913	1784.96	666.06
6500	30.00	20.46	6000	1831.80	683.54
6600	30.00	20.46	6086	1878.64	701.01
6700	30.00	20.46	6173	1925.48	718.49
6800	28.94	12.25	6260	1972.42	734.47
6900	28.61	351.40	6348	2019.86	736.03
7000	31.35	332.07	6434	2066.63	720.23
7100	36.47	316.59	6518	2111.31	687.54
7200	43.12	304.88	6594	2152.55	638.96
7300	50.69	295.91	6663	2189.09	575.97
7400	58.81	288.75	6720	2219.82	500.47
7500	67.27	282.75	6766	2243.81	414.77
7600	75.92	277.46	6797	2260.33	321.47
7700	84.68	272.56	6814	2268.88	223.40
7800	90.00	269.68	6817	2269.84	123.50
7900	90.00	269.68	6817	2269.29	23.50
8000	90.00	269.68	6817	2268.73	-76.49
8100	90.00	269.68	6817	2268.18	-176.49
8200	90.00	269.68	6817	2267.63	-276.49
8300	90.00	269.68	6817	2267.08	-376.49
8400	90.00	269.68	6817	2266.52	-476.49
8500	90.00	269.68	6817	2265.97	-576.49
8600	90.00	269.68	6817	2265.42	-676.48
8700	90.00	269.68	6817	2264.87	-776.48
8800	90.00	269.68	6817	2264.31	-876.48
8900	90.00	269.68	6817	2263.76	-976.48
9000	90.00	269.68	6817	2263.21	-1076.48
9100	90.00	269.68	6817	2262.66	-1176.48
9200	90.00	269.68	6817	2262.11	-1276.48
9300	90.00	269.68	6817	2261.55	-1376.47
9400	90.00	269.68	6817	2261.00	-1476.47
9500	90.00	269.68	6817	2260.45	-1576.47
9600	90.00	269.68	6817	2259.90	-1676.47

9700	90.00	269.68	6817	2259.34	-1776.47
9800	90.00	269.68	6817	2258.79	-1876.47
9900	90.00	269.68	6817	2258.24	-1976.46
10000	90.00	269.68	6817	2257.69	-2076.46
10100	90.00	269.68	6817	2257.14	-2176.46
10200	90.00	269.68	6817	2256.58	-2276.46
10300	90.00	269.68	6817	2256.03	-2376.46
10400	90.00	269.68	6817	2255.48	-2476.46
10500	90.00	269.68	6817	2254.93	-2576.46
10600	90.00	269.68	6817	2254.37	-2676.45
10700	90.00	269.68	6817	2253.82	-2776.45
10800	90.00	269.68	6817	2253.27	-2876.45
10900	90.00	269.68	6817	2252.72	-2976.45
11000	90.00	269.68	6817	2252.16	-3076.45
11100	90.00	269.68	6817	2251.61	-3176.45
11200	90.00	269.68	6817	2251.06	-3276.44
11300	90.00	269.68	6817	2250.51	-3376.44
11400	90.00	269.68	6817	2249.96	-3476.44
11500	90.00	269.68	6817	2249.40	-3576.44
11600	90.00	269.68	6817	2248.85	-3676.44
11700	90.00	269.68	6817	2248.30	-3776.44
11800	90.00	269.68	6817	2247.75	-3876.44
11900	90.00	269.68	6817	2247.19	-3976.43
12000	90.00	269.68	6817	2246.64	-4076.43
12100	90.00	269.68	6817	2246.09	-4176.43
12200	90.00	269.68	6817	2245.54	-4276.43
12300	90.00	269.68	6817	2244.99	-4376.43
12400	90.00	269.68	6817	2244.43	-4476.43
12500	90.00	269.68	6817	2243.88	-4576.43
12600	90.00	269.68	6817	2243.33	-4676.42
12700	90.00	269.68	6817	2242.78	-4776.42
12800	90.00	269.68	6817	2242.22	-4876.42
12900	90.00	269.68	6817	2241.67	-4976.42
13000	90.00	269.68	6817	2241.12	-5076.42

13100	90.00	269.68	6817	2240.57	-5176.42
13200	90.00	269.68	6817	2240.02	-5276.41
13300	90.00	269.68	6817	2239.46	-5376.41
13400	90.00	269.68	6817	2238.91	-5476.41
13500	90.00	269.68	6817	2238.36	-5576.41
13600	90.00	269.68	6817	2237.81	-5676.41
13700	90.00	269.68	6817	2237.25	-5776.41
13800	90.00	269.68	6817	2236.70	-5876.41
13900	90.00	269.68	6817	2236.15	-5976.40
14000	90.00	269.68	6817	2235.60	-6076.40
14100	90.00	269.68	6817	2235.04	-6176.40
14200	90.00	269.68	6817	2234.49	-6276.40
14300	90.00	269.68	6817	2233.94	-6376.40
14400	90.00	269.68	6817	2233.39	-6476.40
14500	90.00	269.68	6817	2232.84	-6576.39
14600	90.00	269.68	6817	2232.28	-6676.39
14700	90.00	269.68	6817	2231.73	-6776.39
14800	90.00	269.68	6817	2231.18	-6876.39
14900	90.00	269.68	6817	2230.63	-6976.39
15000	90.00	269.68	6817	2230.07	-7076.39
15100	90.00	269.68	6817	2229.52	-7176.39
15200	90.00	269.68	6817	2228.97	-7276.38
15300	90.00	269.68	6817	2228.42	-7376.38
15400	90.00	269.68	6817	2227.87	-7476.38
15500	90.00	269.68	6817	2227.31	-7576.38
15600	90.00	269.68	6817	2226.76	-7676.38
15700	90.00	269.68	6817	2226.21	-7776.38
15800	90.00	269.68	6817	2225.66	-7876.37
15900	90.00	269.68	6817	2225.10	-7976.37
16000	90.00	269.68	6817	2224.55	-8076.37
16100	90.00	269.68	6817	2224.00	-8176.37
16200	90.00	269.68	6817	2223.45	-8276.37
16300	90.00	269.68	6817	2222.89	-8376.37
16400	90.00	269.68	6817	2222.34	-8476.37

16500	90.00	269.68	6817	2221.79	-8576.36
16600	90.00	269.68	6817	2221.24	-8676.36
16700	90.00	269.68	6817	2220.69	-8776.36
16800	90.00	269.68	6817	2220.13	-8876.36
16900	90.00	269.68	6817	2219.58	-8976.36
17000	90.00	269.68	6817	2219.03	-9076.36
17100	90.00	269.68	6817	2218.48	-9176.35
17200	90.00	269.68	6817	2217.92	-9276.35
17300	90.00	269.68	6817	2217.37	-9376.35
17400	90.00	269.68	6817	2216.82	-9476.35
17500	90.00	269.68	6817	2216.27	-9576.35
17600	90.00	269.68	6817	2215.72	-9676.35
17700	90.00	269.68	6817	2215.16	-9776.35
17800	90.00	269.68	6817	2214.61	-9876.34
17900	90.00	269.68	6817	2214.06	-9976.34
18000	90.00	269.68	6817	2213.51	-10076.34
18100	90.00	269.68	6817	2212.95	-10176.34
18200	90.00	269.68	6817	2212.40	-10276.34
18300	90.00	269.68	6817	2211.85	-10376.34
18400	90.00	269.68	6817	2211.30	-10476.34
18500	90.00	269.68	6817	2210.75	-10576.33
18600	90.00	269.68	6817	2210.19	-10676.33
18700	90.00	269.68	6817	2209.64	-10776.33
18800	90.00	269.68	6817	2209.09	-10876.33
18900	90.00	269.68	6817	2208.54	-10976.33
19000	90.00	269.68	6817	2207.98	-11076.33
19100	90.00	269.68	6817	2207.43	-11176.32
19200	90.00	269.68	6817	2206.88	-11276.32
19300	90.00	269.68	6817	2206.33	-11376.32
19400	90.00	269.68	6817	2205.77	-11476.32
19500	90.00	269.68	6817	2205.22	-11576.32
19600	90.00	269.68	6817	2204.67	-11676.32
19700	90.00	269.68	6817	2204.12	-11776.32
19800	90.00	269.68	6817	2203.57	-11876.31

19900	90.00	269.68	6817	2203.01	-11976.31
20000	90.00	269.68	6817	2202.46	-12076.31
20082	90.00	269.68	6817	2202.01	-12158.14