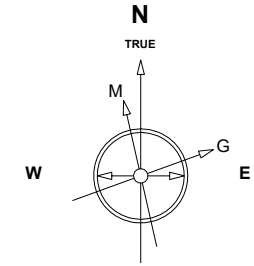


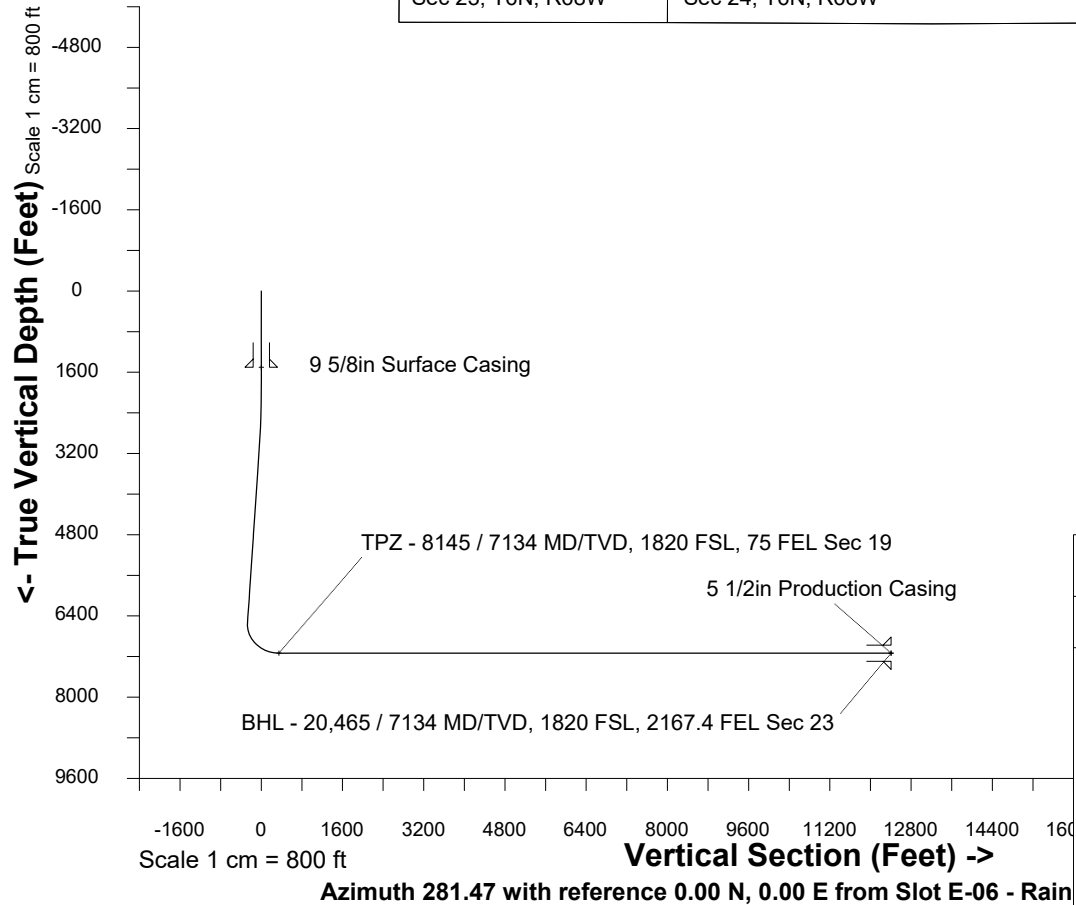
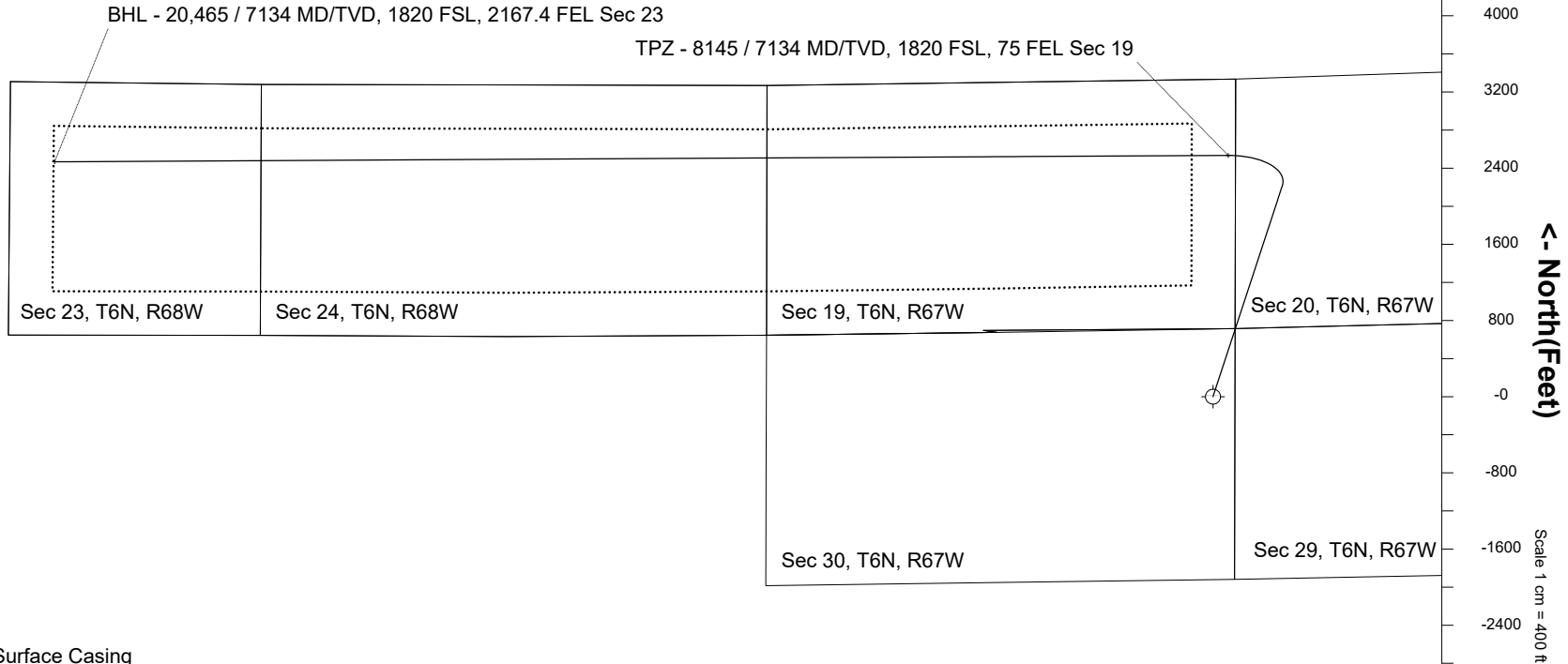
Location	Colorado	Slot	Slot E-06 - Raindance FC 23-272HC
Field	Wattenburg	Well	Raindance FC 23-272HC
Installation	Raindance	Wellbore	Raindance FC 23-272HC (PWB)

Created by	admin
Date plotted	12-Dec-2018

Plot reference is Raindance FC 23-272HC (PWB).
Ref wellpoints is Raindance FC 23-272HC (PWP#1).
Coordinates are in Feet reference Slot E-06 - Raindance FC 23-272HC
True Vertical Depths are reference Rig Datum.
Measured Depths are reference Rig Datum.
Rig Datum: Planned Datum #1
Rig Datum to Mean Sea Level: 4809.00 ft.
Plot North is aligned to TRUE North.



Nov-14-2016
IGRF Model [1900.0-2020.0] Dip: -29.88 deg Field: 32206.0 nT
Lat: S0 0 0.0000 Long: E3 0 0.0000 Elev: 4789.00 ft
Magnetic North is 4.17 deg West of TRUE North
To correct azimuth from Magnetic to TRUE subtract 4.17 deg



WELL PROFILE DATA								
Point	MD	Inc	Azi	TVD	North	East	deg/100ft	V. Sect
Tie on	0.00	0.00	0.00	0.00	S 0.00	W 0.00		0.00
KOP	1997.00	0.00	18.16	1997.00	S 0.00	W 0.00	0.00	0.00
End of Build	2997.05	30.00	18.16	2951.98	N 243.15	E 79.77	3.00	-29.83
End of Hold	7153.88	30.00	18.16	6551.84	N 2218.09	E 727.71	0.00	-272.16
Target TPZ - ...Sec 19	8145.05	90.00	269.69	7134.00	N 2533.82	E 160.26	10.00	346.73
T.D. & Target BHL...	20464.89	90.00	269.69	7134.00	N 2466.87	W 12159.39	0.00	12407.11

Header Information	measured depth (ft)	inclination (°)	azimuth (°)	true vertical depth (ft)	northing +N/-S (ft)	easting +E/-W (ft)
Operator Name	0	0.00	0.00	0	0.00	0.00
Great Western Oil & Gas Company LLC	100	0.00	0.00	100	0.00	0.00
Operator Number	200	0.00	0.00	200	0.00	0.00
10110	300	0.00	0.00	300	0.00	0.00
Well Name and Number	400	0.00	0.00	400	0.00	0.00
Raindance FC 23-272HC	500	0.00	0.00	500	0.00	0.00
API Number (if available)	600	0.00	0.00	600	0.00	0.00
	700	0.00	0.00	700	0.00	0.00
Location: QQ SEC TWP RGE	800	0.00	0.00	800	0.00	0.00
NENE 30 6N 67W	900	0.00	0.00	900	0.00	0.00
Citing Type: Planned or Actual	1000	0.00	0.00	1000	0.00	0.00
Planned	1100	0.00	0.00	1100	0.00	0.00
Deviation Indicator	1200	0.00	0.00	1200	0.00	0.00
Horizontal ▼	1300	0.00	0.00	1300	0.00	0.00
North Reference	1400	0.00	0.00	1400	0.00	0.00
True ▼	1500	0.00	0.00	1500	0.00	0.00
Grid Type	1600	0.00	0.00	1600	0.00	0.00
▼	1700	0.00	0.00	1700	0.00	0.00
	1800	0.00	0.00	1800	0.00	0.00
	1900	0.00	0.00	1900	0.00	0.00
	2000	0.09	18.16	2000	0.00	0.00
	2100	3.09	18.16	2100	2.64	0.87
	2200	6.09	18.16	2200	10.24	3.36
	2300	9.09	18.16	2299	22.79	7.48
	2400	12.09	18.16	2397	40.25	13.21
	2500	15.09	18.16	2494	62.57	20.53
	2600	18.09	18.16	2590	89.70	29.43
	2700	21.09	18.16	2684	121.55	39.88
	2800	24.09	18.16	2777	158.05	51.85

2900	27.09	18.16	2867	199.09	65.32
3000	30.00	18.16	2955	244.55	80.23
3100	30.00	18.16	3041	292.06	95.82
3200	30.00	18.16	3128	339.57	111.41
3300	30.00	18.16	3214	387.08	126.99
3400	30.00	18.16	3301	434.59	142.58
3500	30.00	18.16	3388	482.10	158.17
3600	30.00	18.16	3474	529.61	173.75
3700	30.00	18.16	3561	577.12	189.34
3800	30.00	18.16	3647	624.63	204.93
3900	30.00	18.16	3734	672.15	220.52
4000	30.00	18.16	3821	719.66	236.10
4100	30.00	18.16	3907	767.17	251.69
4200	30.00	18.16	3994	814.68	267.28
4300	30.00	18.16	4080	862.19	282.87
4400	30.00	18.16	4167	909.70	298.45
4500	30.00	18.16	4254	957.21	314.04
4600	30.00	18.16	4340	1004.72	329.63
4700	30.00	18.16	4427	1052.23	345.21
4800	30.00	18.16	4513	1099.74	360.80
4900	30.00	18.16	4600	1147.25	376.39
5000	30.00	18.16	4687	1194.76	391.98
5100	30.00	18.16	4773	1242.27	407.56
5200	30.00	18.16	4860	1289.79	423.15
5300	30.00	18.16	4946	1337.30	438.74
5400	30.00	18.16	5033	1384.81	454.32
5500	30.00	18.16	5120	1432.32	469.91
5600	30.00	18.16	5206	1479.83	485.50
5700	30.00	18.16	5293	1527.34	501.09
5800	30.00	18.16	5379	1574.85	516.67
5900	30.00	18.16	5466	1622.36	532.26
6000	30.00	18.16	5553	1669.87	547.85
6100	30.00	18.16	5639	1717.38	563.44
6200	30.00	18.16	5726	1764.89	579.02

6300	30.00	18.16	5812	1812.40	594.61
6400	30.00	18.16	5899	1859.92	610.20
6500	30.00	18.16	5986	1907.43	625.78
6600	30.00	18.16	6072	1954.94	641.37
6700	30.00	18.16	6159	2002.45	656.96
6800	30.00	18.16	6245	2049.96	672.55
6900	30.00	18.16	6332	2097.47	688.13
7000	30.00	18.16	6419	2144.98	703.72
7100	30.00	18.16	6505	2192.49	719.31
7200	29.03	9.00	6592	2240.11	733.05
7300	29.18	348.36	6680	2288.07	731.93
7400	32.31	329.70	6766	2335.14	713.48
7500	37.66	314.90	6848	2379.89	678.27
7600	44.43	303.65	6923	2420.95	627.37
7700	52.06	294.96	6990	2457.07	562.31
7800	60.21	287.96	7046	2487.17	485.09
7900	68.67	282.04	7089	2510.32	398.04
8000	77.31	276.77	7118	2525.83	303.81
8100	86.05	271.86	7132	2533.22	205.27
8200	90.00	269.69	7134	2533.52	105.31
8300	90.00	269.69	7134	2532.98	5.31
8400	90.00	269.69	7134	2532.44	-94.68
8500	90.00	269.69	7134	2531.89	-194.68
8600	90.00	269.69	7134	2531.35	-294.68
8700	90.00	269.69	7134	2530.81	-394.68
8800	90.00	269.69	7134	2530.26	-494.68
8900	90.00	269.69	7134	2529.72	-594.68
9000	90.00	269.69	7134	2529.17	-694.68
9100	90.00	269.69	7134	2528.63	-794.67
9200	90.00	269.69	7134	2528.09	-894.67
9300	90.00	269.69	7134	2527.54	-994.67
9400	90.00	269.69	7134	2527.00	-1094.67
9500	90.00	269.69	7134	2526.46	-1194.67
9600	90.00	269.69	7134	2525.91	-1294.67

9700	90.00	269.69	7134	2525.37	-1394.66
9800	90.00	269.69	7134	2524.83	-1494.66
9900	90.00	269.69	7134	2524.28	-1594.66
10000	90.00	269.69	7134	2523.74	-1694.66
10100	90.00	269.69	7134	2523.20	-1794.66
10200	90.00	269.69	7134	2522.65	-1894.66
10300	90.00	269.69	7134	2522.11	-1994.66
10400	90.00	269.69	7134	2521.57	-2094.65
10500	90.00	269.69	7134	2521.02	-2194.65
10600	90.00	269.69	7134	2520.48	-2294.65
10700	90.00	269.69	7134	2519.94	-2394.65
10800	90.00	269.69	7134	2519.39	-2494.65
10900	90.00	269.69	7134	2518.85	-2594.65
11000	90.00	269.69	7134	2518.31	-2694.65
11100	90.00	269.69	7134	2517.76	-2794.64
11200	90.00	269.69	7134	2517.22	-2894.64
11300	90.00	269.69	7134	2516.68	-2994.64
11400	90.00	269.69	7134	2516.13	-3094.64
11500	90.00	269.69	7134	2515.59	-3194.64
11600	90.00	269.69	7134	2515.04	-3294.64
11700	90.00	269.69	7134	2514.50	-3394.64
11800	90.00	269.69	7134	2513.96	-3494.63
11900	90.00	269.69	7134	2513.41	-3594.63
12000	90.00	269.69	7134	2512.87	-3694.63
12100	90.00	269.69	7134	2512.33	-3794.63
12200	90.00	269.69	7134	2511.78	-3894.63
12300	90.00	269.69	7134	2511.24	-3994.63
12400	90.00	269.69	7134	2510.70	-4094.63
12500	90.00	269.69	7134	2510.15	-4194.62
12600	90.00	269.69	7134	2509.61	-4294.62
12700	90.00	269.69	7134	2509.07	-4394.62
12800	90.00	269.69	7134	2508.52	-4494.62
12900	90.00	269.69	7134	2507.98	-4594.62
13000	90.00	269.69	7134	2507.44	-4694.62

13100	90.00	269.69	7134	2506.89	-4794.61
13200	90.00	269.69	7134	2506.35	-4894.61
13300	90.00	269.69	7134	2505.81	-4994.61
13400	90.00	269.69	7134	2505.26	-5094.61
13500	90.00	269.69	7134	2504.72	-5194.61
13600	90.00	269.69	7134	2504.18	-5294.61
13700	90.00	269.69	7134	2503.63	-5394.61
13800	90.00	269.69	7134	2503.09	-5494.60
13900	90.00	269.69	7134	2502.55	-5594.60
14000	90.00	269.69	7134	2502.00	-5694.60
14100	90.00	269.69	7134	2501.46	-5794.60
14200	90.00	269.69	7134	2500.91	-5894.60
14300	90.00	269.69	7134	2500.37	-5994.60
14400	90.00	269.69	7134	2499.83	-6094.60
14500	90.00	269.69	7134	2499.28	-6194.59
14600	90.00	269.69	7134	2498.74	-6294.59
14700	90.00	269.69	7134	2498.20	-6394.59
14800	90.00	269.69	7134	2497.65	-6494.59
14900	90.00	269.69	7134	2497.11	-6594.59
15000	90.00	269.69	7134	2496.57	-6694.59
15100	90.00	269.69	7134	2496.02	-6794.59
15200	90.00	269.69	7134	2495.48	-6894.58
15300	90.00	269.69	7134	2494.94	-6994.58
15400	90.00	269.69	7134	2494.39	-7094.58
15500	90.00	269.69	7134	2493.85	-7194.58
15600	90.00	269.69	7134	2493.31	-7294.58
15700	90.00	269.69	7134	2492.76	-7394.58
15800	90.00	269.69	7134	2492.22	-7494.57
15900	90.00	269.69	7134	2491.68	-7594.57
16000	90.00	269.69	7134	2491.13	-7694.57
16100	90.00	269.69	7134	2490.59	-7794.57
16200	90.00	269.69	7134	2490.05	-7894.57
16300	90.00	269.69	7134	2489.50	-7994.57
16400	90.00	269.69	7134	2488.96	-8094.57

16500	90.00	269.69	7134	2488.42	-8194.56
16600	90.00	269.69	7134	2487.87	-8294.56
16700	90.00	269.69	7134	2487.33	-8394.56
16800	90.00	269.69	7134	2486.79	-8494.56
16900	90.00	269.69	7134	2486.24	-8594.56
17000	90.00	269.69	7134	2485.70	-8694.56
17100	90.00	269.69	7134	2485.15	-8794.56
17200	90.00	269.69	7134	2484.61	-8894.55
17300	90.00	269.69	7134	2484.07	-8994.55
17400	90.00	269.69	7134	2483.52	-9094.55
17500	90.00	269.69	7134	2482.98	-9194.55
17600	90.00	269.69	7134	2482.44	-9294.55
17700	90.00	269.69	7134	2481.89	-9394.55
17800	90.00	269.69	7134	2481.35	-9494.55
17900	90.00	269.69	7134	2480.81	-9594.54
18000	90.00	269.69	7134	2480.26	-9694.54
18100	90.00	269.69	7134	2479.72	-9794.54
18200	90.00	269.69	7134	2479.18	-9894.54
18300	90.00	269.69	7134	2478.63	-9994.54
18400	90.00	269.69	7134	2478.09	-10094.54
18500	90.00	269.69	7134	2477.55	-10194.54
18600	90.00	269.69	7134	2477.00	-10294.53
18700	90.00	269.69	7134	2476.46	-10394.53
18800	90.00	269.69	7134	2475.92	-10494.53
18900	90.00	269.69	7134	2475.37	-10594.53
19000	90.00	269.69	7134	2474.83	-10694.53
19100	90.00	269.69	7134	2474.29	-10794.53
19200	90.00	269.69	7134	2473.74	-10894.52
19300	90.00	269.69	7134	2473.20	-10994.52
19400	90.00	269.69	7134	2472.66	-11094.52
19500	90.00	269.69	7134	2472.11	-11194.52
19600	90.00	269.69	7134	2471.57	-11294.52
19700	90.00	269.69	7134	2471.02	-11394.52
19800	90.00	269.69	7134	2470.48	-11494.52

19900	90.00	269.69	7134	2469.94	-11594.51
20000	90.00	269.69	7134	2469.39	-11694.51
20100	90.00	269.69	7134	2468.85	-11794.51
20200	90.00	269.69	7134	2468.31	-11894.51
20300	90.00	269.69	7134	2467.76	-11994.51
20400	90.00	269.69	7134	2467.22	-12094.51
20465	90.00	269.69	7134	2466.87	-12159.39