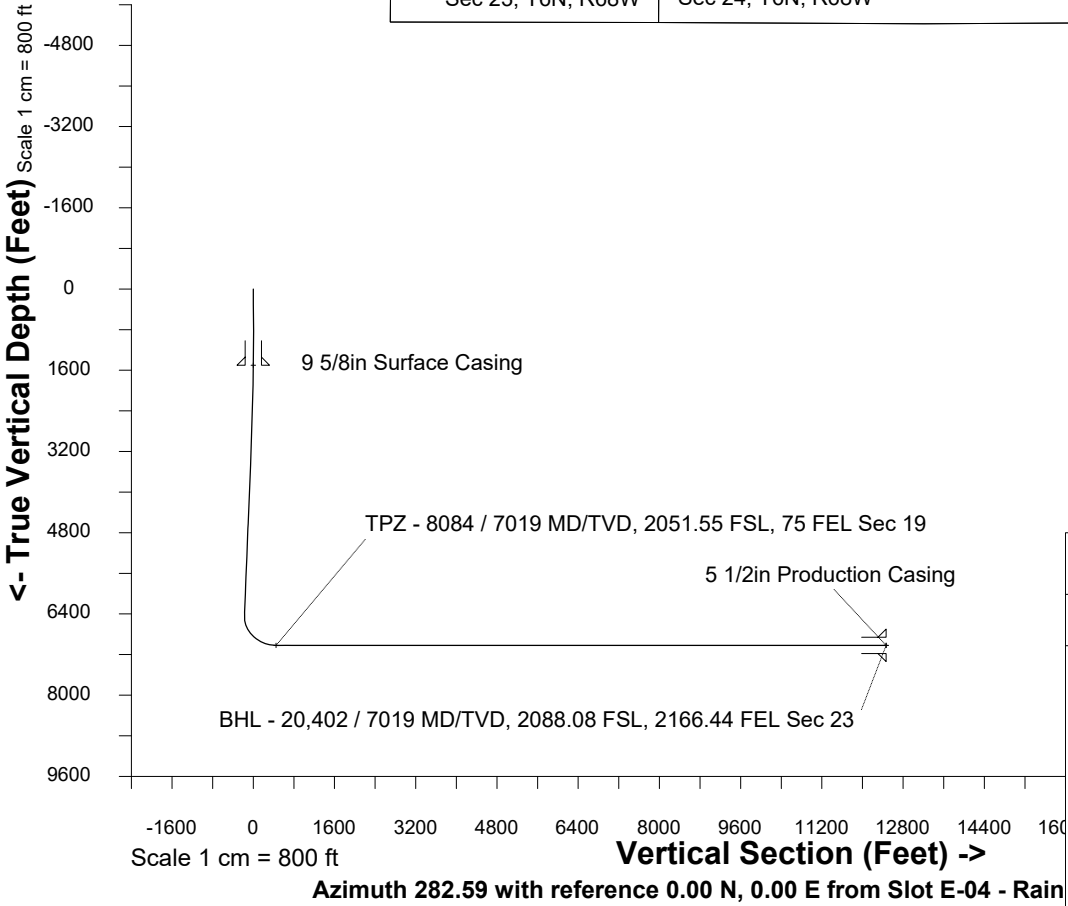
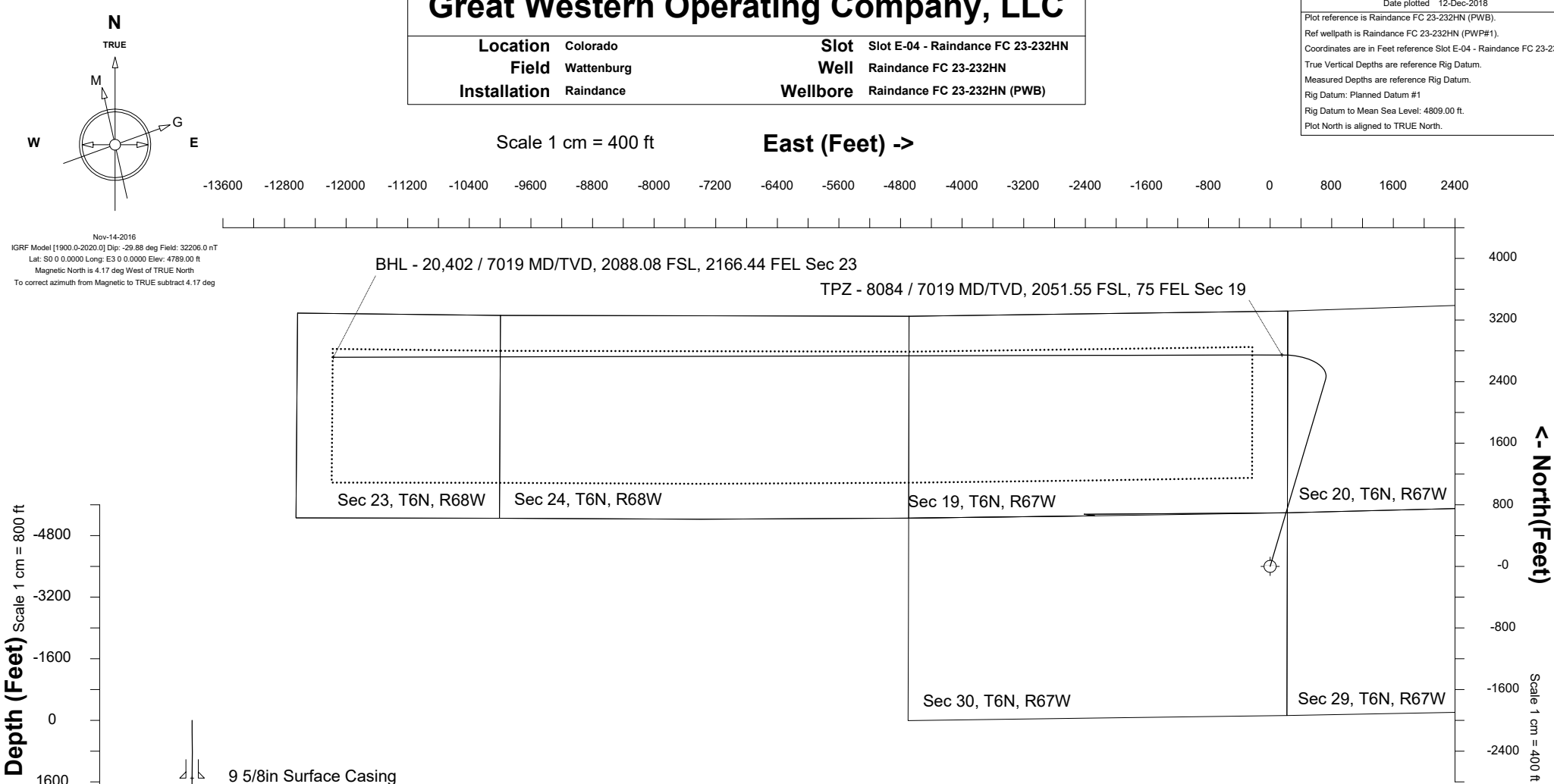


Great Western Operating Company, LLC			
Location	Colorado	Slot	Slot E-04 - Raindance FC 23-232HN
Field	Wattenburg	Well	Raindance FC 23-232HN
Installation	Raindance	Wellbore	Raindance FC 23-232HN (PWB)

Created by	admin
Date plotted	12-Dec-2018
Plot reference is Raindance FC 23-232HN (PWB).	
Ref wellpath is Raindance FC 23-232HN (PWP#1).	
Coordinates are in Feet reference Slot E-04 - Raindance FC 23-232HN.	
True Vertical Depths are reference Rig Datum.	
Measured Depths are reference Rig Datum.	
Rig Datum: Planned Datum #1	
Rig Datum to Mean Sea Level: 4809.00 ft.	
Plot North is aligned to TRUE North.	



WELL PROFILE DATA								
Point	MD	Inc	Azi	TVD	North	East	deg/100ft	V. Sect
Tie on	0.00	0.00	0.00	0.00	S 0.00	W 0.00		0.00
KOP	1541.00	0.00	16.51	1541.00	S 0.00	W 0.00	0.00	0.00
End of Build	2540.87	30.00	16.51	2495.81	N 245.25	E 72.71	3.00	-17.52
End of Hold	7101.69	30.00	16.51	6445.76	N 2431.33	E 720.86	0.00	-173.66
Target TPZ - ...Sec 19	8084.08	90.00	269.86	7019.00	N 2746.95	E 153.03	10.00	449.31
T.D. & Target BHL... 23	20401.97	90.00	269.86	7019.00	N 2716.43	W 12164.83	0.00	12464.43

Header Information	measured depth (ft)	inclination (°)	azimuth (°)	true vertical depth (ft)	northing +N/-S (ft)	easting +E/-W (ft)
Operator Name	0	0.00	0.000	0	0.00	0.00
Great Western Oil & Gas Company LLC	100	0.00	0.000	100	0.00	0.00
Operator Number	200	0.00	0.000	200	0.00	0.00
10110	300	0.00	0.000	300	0.00	0.00
Well Name and Number	400	0.00	0.000	400	0.00	0.00
Raindance FC 23-232HN	500	0.00	0.000	500	0.00	0.00
API Number (if available)	600	0.00	0.000	600	0.00	0.00
	700	0.00	0.000	700	0.00	0.00
Location: QQ SEC TWP RGE	800	0.00	0.000	800	0.00	0.00
NENE 30 6N 67W	900	0.00	0.000	900	0.00	0.00
Citing Type: Planned or Actual	1000	0.00	0.000	1000	0.00	0.00
Planned	1100	0.00	0.000	1100	0.00	0.00
Deviation Indicator	1200	0.00	0.000	1200	0.00	0.00
Horizontal ▼	1300	0.00	0.000	1300	0.00	0.00
North Reference	1400	0.00	0.000	1400	0.00	0.00
True ▼	1500	0.00	0.000	1500	0.00	0.00
Grid Type	1600	1.77	16.510	1600	0.87	0.26
▼	1700	4.77	16.510	1700	6.34	1.88
	1800	7.77	16.510	1799	16.81	4.98
	1900	10.77	16.510	1898	32.25	9.56
	2000	13.77	16.510	1996	52.63	15.60
	2100	16.77	16.510	2092	77.87	23.09
	2200	19.77	16.510	2187	107.93	32.00
	2300	22.77	16.510	2280	142.70	42.31
	2400	25.77	16.510	2371	182.11	53.99
	2500	28.77	16.510	2460	226.03	67.01
	2600	30.00	16.510	2547	273.60	81.12
	2700	30.00	16.510	2634	321.53	95.33
	2800	30.00	16.510	2720	369.46	109.54

2900	30.00	16.510	2807	417.39	123.75
3000	30.00	16.510	2893	465.32	137.96
3100	30.00	16.510	2980	513.26	152.17
3200	30.00	16.510	3067	561.19	166.38
3300	30.00	16.510	3153	609.12	180.60
3400	30.00	16.510	3240	657.05	194.81
3500	30.00	16.510	3326	704.98	209.02
3600	30.00	16.510	3413	752.91	223.23
3700	30.00	16.510	3500	800.85	237.44
3800	30.00	16.510	3586	848.78	251.65
3900	30.00	16.510	3673	896.71	265.86
4000	30.00	16.510	3760	944.64	280.07
4100	30.00	16.510	3846	992.57	294.28
4200	30.00	16.510	3933	1040.50	308.49
4300	30.00	16.510	4019	1088.43	322.71
4400	30.00	16.510	4106	1136.37	336.92
4500	30.00	16.510	4193	1184.30	351.13
4600	30.00	16.510	4279	1232.23	365.34
4700	30.00	16.510	4366	1280.16	379.55
4800	30.00	16.510	4452	1328.09	393.76
4900	30.00	16.510	4539	1376.02	407.97
5000	30.00	16.510	4626	1423.96	422.18
5100	30.00	16.510	4712	1471.89	436.39
5200	30.00	16.510	4799	1519.82	450.61
5300	30.00	16.510	4885	1567.75	464.82
5400	30.00	16.510	4972	1615.68	479.03
5500	30.00	16.510	5059	1663.61	493.24
5600	30.00	16.510	5145	1711.55	507.45
5700	30.00	16.510	5232	1759.48	521.66
5800	30.00	16.510	5318	1807.41	535.87
5900	30.00	16.510	5405	1855.34	550.08
6000	30.00	16.510	5492	1903.27	564.29
6100	30.00	16.510	5578	1951.20	578.50
6200	30.00	16.510	5665	1999.14	592.72

6300	30.00	16.510	5751	2047.07	606.93
6400	30.00	16.510	5838	2095.00	621.14
6500	30.00	16.510	5925	2142.93	635.35
6600	30.00	16.510	6011	2190.86	649.56
6700	30.00	16.510	6098	2238.79	663.77
6800	30.00	16.510	6184	2286.73	677.98
6900	30.00	16.510	6271	2334.66	692.19
7000	30.00	16.510	6358	2382.59	706.40
7100	30.00	16.510	6444	2430.52	720.62
7200	28.98	356.570	6532	2478.78	726.43
7300	30.99	336.890	6618	2526.77	714.84
7400	35.54	320.580	6702	2573.02	686.21
7500	41.81	308.060	6780	2616.13	641.40
7600	49.12	298.460	6850	2654.79	581.76
7700	57.07	290.850	6911	2687.83	509.13
7800	65.40	284.530	6959	2714.23	425.69
7900	73.96	279.010	6993	2733.21	333.99
8000	82.65	273.950	7014	2744.17	236.81
8100	90.00	269.860	7019	2746.91	137.10
8200	90.00	269.860	7019	2746.66	37.10
8300	90.00	269.860	7019	2746.41	-62.90
8400	90.00	269.860	7019	2746.16	-162.90
8500	90.00	269.860	7019	2745.92	-262.90
8600	90.00	269.860	7019	2745.67	-362.90
8700	90.00	269.860	7019	2745.42	-462.89
8800	90.00	269.860	7019	2745.17	-562.89
8900	90.00	269.860	7019	2744.92	-662.89
9000	90.00	269.860	7019	2744.68	-762.89
9100	90.00	269.860	7019	2744.43	-862.89
9200	90.00	269.860	7019	2744.18	-962.89
9300	90.00	269.860	7019	2743.93	-1062.89
9400	90.00	269.860	7019	2743.69	-1162.89
9500	90.00	269.860	7019	2743.44	-1262.89
9600	90.00	269.860	7019	2743.19	-1362.89

9700	90.00	269.860	7019	2742.94	-1462.89
9800	90.00	269.860	7019	2742.69	-1562.89
9900	90.00	269.860	7019	2742.45	-1662.89
10000	90.00	269.860	7019	2742.20	-1762.89
10100	90.00	269.860	7019	2741.95	-1862.89
10200	90.00	269.860	7019	2741.70	-1962.89
10300	90.00	269.860	7019	2741.46	-2062.89
10400	90.00	269.860	7019	2741.21	-2162.89
10500	90.00	269.860	7019	2740.96	-2262.89
10600	90.00	269.860	7019	2740.71	-2362.89
10700	90.00	269.860	7019	2740.47	-2462.89
10800	90.00	269.860	7019	2740.22	-2562.89
10900	90.00	269.860	7019	2739.97	-2662.89
11000	90.00	269.860	7019	2739.72	-2762.89
11100	90.00	269.860	7019	2739.47	-2862.89
11200	90.00	269.860	7019	2739.23	-2962.89
11300	90.00	269.860	7019	2738.98	-3062.89
11400	90.00	269.860	7019	2738.73	-3162.89
11500	90.00	269.860	7019	2738.48	-3262.89
11600	90.00	269.860	7019	2738.24	-3362.89
11700	90.00	269.860	7019	2737.99	-3462.89
11800	90.00	269.860	7019	2737.74	-3562.89
11900	90.00	269.860	7019	2737.49	-3662.89
12000	90.00	269.860	7019	2737.24	-3762.88
12100	90.00	269.860	7019	2737.00	-3862.88
12200	90.00	269.860	7019	2736.75	-3962.88
12300	90.00	269.860	7019	2736.50	-4062.88
12400	90.00	269.860	7019	2736.25	-4162.88
12500	90.00	269.860	7019	2736.01	-4262.88
12600	90.00	269.860	7019	2735.76	-4362.88
12700	90.00	269.860	7019	2735.51	-4462.88
12800	90.00	269.860	7019	2735.26	-4562.88
12900	90.00	269.860	7019	2735.01	-4662.88
13000	90.00	269.860	7019	2734.77	-4762.88

13100	90.00	269.860	7019	2734.52	-4862.88
13200	90.00	269.860	7019	2734.27	-4962.88
13300	90.00	269.860	7019	2734.02	-5062.88
13400	90.00	269.860	7019	2733.78	-5162.88
13500	90.00	269.860	7019	2733.53	-5262.88
13600	90.00	269.860	7019	2733.28	-5362.88
13700	90.00	269.860	7019	2733.03	-5462.88
13800	90.00	269.860	7019	2732.78	-5562.88
13900	90.00	269.860	7019	2732.54	-5662.88
14000	90.00	269.860	7019	2732.29	-5762.88
14100	90.00	269.860	7019	2732.04	-5862.88
14200	90.00	269.860	7019	2731.79	-5962.88
14300	90.00	269.860	7019	2731.55	-6062.88
14400	90.00	269.860	7019	2731.30	-6162.88
14500	90.00	269.860	7019	2731.05	-6262.88
14600	90.00	269.860	7019	2730.80	-6362.88
14700	90.00	269.860	7019	2730.55	-6462.88
14800	90.00	269.860	7019	2730.31	-6562.88
14900	90.00	269.860	7019	2730.06	-6662.88
15000	90.00	269.860	7019	2729.81	-6762.88
15100	90.00	269.860	7019	2729.56	-6862.88
15200	90.00	269.860	7019	2729.32	-6962.87
15300	90.00	269.860	7019	2729.07	-7062.87
15400	90.00	269.860	7019	2728.82	-7162.87
15500	90.00	269.860	7019	2728.57	-7262.87
15600	90.00	269.860	7019	2728.32	-7362.87
15700	90.00	269.860	7019	2728.08	-7462.87
15800	90.00	269.860	7019	2727.83	-7562.87
15900	90.00	269.860	7019	2727.58	-7662.87
16000	90.00	269.860	7019	2727.33	-7762.87
16100	90.00	269.860	7019	2727.09	-7862.87
16200	90.00	269.860	7019	2726.84	-7962.87
16300	90.00	269.860	7019	2726.59	-8062.87
16400	90.00	269.860	7019	2726.34	-8162.87

16500	90.00	269.860	7019	2726.10	-8262.87
16600	90.00	269.860	7019	2725.85	-8362.87
16700	90.00	269.860	7019	2725.60	-8462.87
16800	90.00	269.860	7019	2725.35	-8562.87
16900	90.00	269.860	7019	2725.10	-8662.87
17000	90.00	269.860	7019	2724.86	-8762.87
17100	90.00	269.860	7019	2724.61	-8862.87
17200	90.00	269.860	7019	2724.36	-8962.87
17300	90.00	269.860	7019	2724.11	-9062.87
17400	90.00	269.860	7019	2723.87	-9162.87
17500	90.00	269.860	7019	2723.62	-9262.87
17600	90.00	269.860	7019	2723.37	-9362.87
17700	90.00	269.860	7019	2723.12	-9462.87
17800	90.00	269.860	7019	2722.87	-9562.87
17900	90.00	269.860	7019	2722.63	-9662.87
18000	90.00	269.860	7019	2722.38	-9762.87
18100	90.00	269.860	7019	2722.13	-9862.87
18200	90.00	269.860	7019	2721.88	-9962.87
18300	90.00	269.860	7019	2721.64	-10062.87
18400	90.00	269.860	7019	2721.39	-10162.87
18500	90.00	269.860	7019	2721.14	-10262.86
18600	90.00	269.860	7019	2720.89	-10362.86
18700	90.00	269.860	7019	2720.64	-10462.86
18800	90.00	269.860	7019	2720.40	-10562.86
18900	90.00	269.860	7019	2720.15	-10662.86
19000	90.00	269.860	7019	2719.90	-10762.86
19100	90.00	269.860	7019	2719.65	-10862.86
19200	90.00	269.860	7019	2719.41	-10962.86
19300	90.00	269.860	7019	2719.16	-11062.86
19400	90.00	269.860	7019	2718.91	-11162.86
19500	90.00	269.860	7019	2718.66	-11262.86
19600	90.00	269.860	7019	2718.41	-11362.86
19700	90.00	269.860	7019	2718.17	-11462.86
19800	90.00	269.860	7019	2717.92	-11562.86

19900	90.00	269.860	7019	2717.67	-11662.86
20000	90.00	269.860	7019	2717.42	-11762.86
20100	90.00	269.860	7019	2717.18	-11862.86
20200	90.00	269.860	7019	2716.93	-11962.86
20300	90.00	269.860	7019	2716.68	-12062.86
20400	90.00	269.860	7019	2716.43	-12162.86
20402	90.00	269.860	7019	2716.43	-12164.83