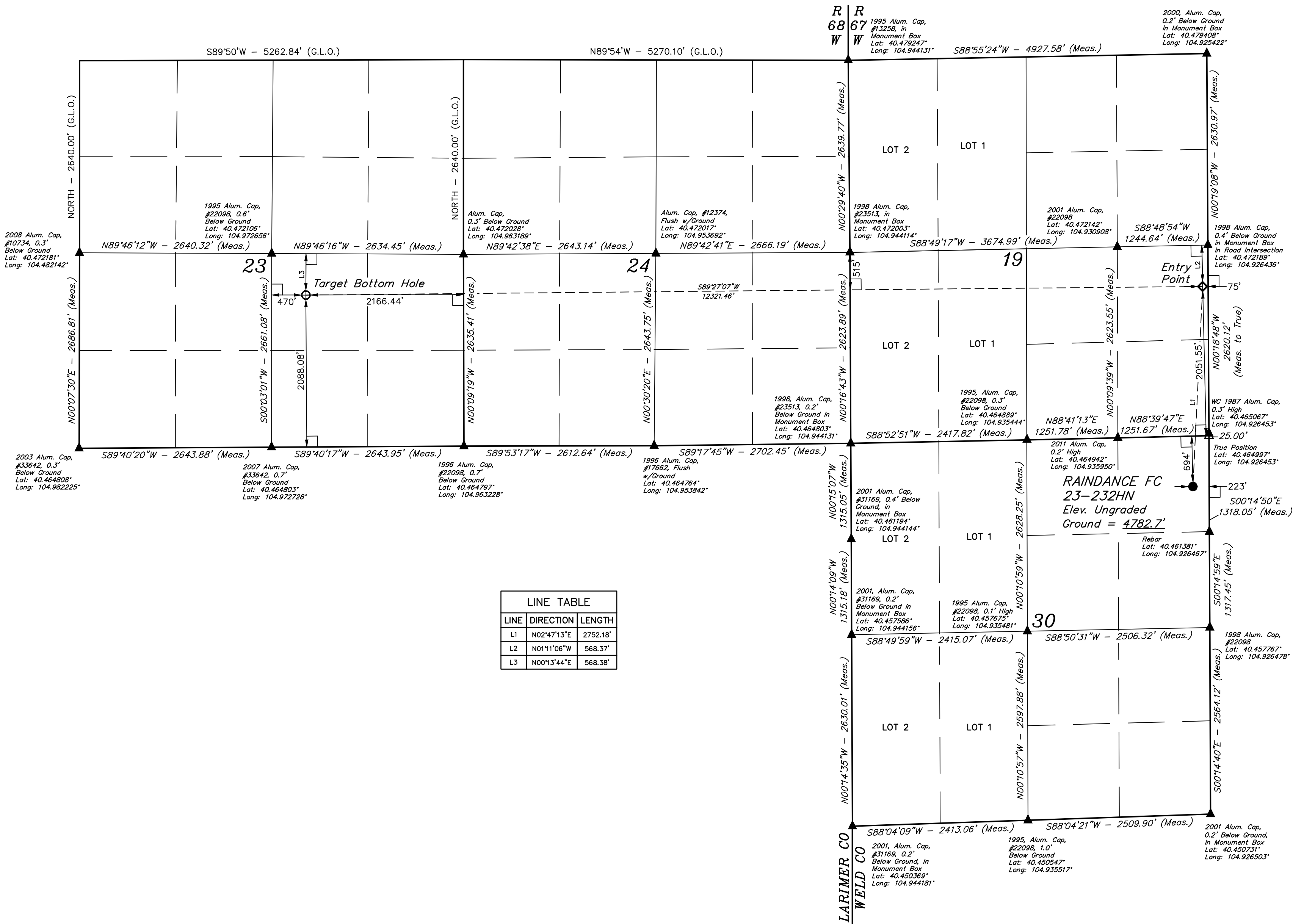
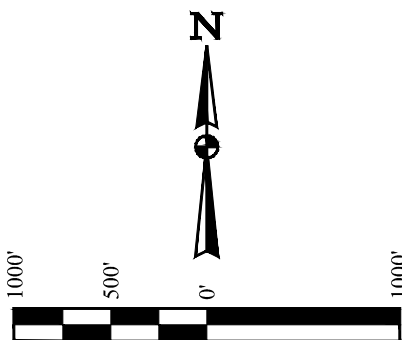


T6N, R67W, 6th P.M.

GREAT WESTERN OPERATING COMPANY

RAINDANCE FC 23-232HN
NE 1/4 NE 1/4, SECTION 30, T6N, R67W, 6th P.M.
WELD COUNTY, COLORADO

BASIS OF BEARINGS
BASIS OF ELEVATION
USGS COOPERATIVE BASE NETWORK CONTROL STATION,
DESIGNATION "VERMILYEA". NGS DATA SHEET LISTS THE
NAVD 88 ELEVATION AS BEING 5026 FEET.



LINE TABLE		
LINE	DIRECTION	LENGTH
L1	N02°47'13"E	2752.18'
L2	N01°11'06"W	568.37'
L3	N00°13'44"E	568.38'

LEGEND:
└─┘ = 90° SYMBOL
● = PROPOSED WELLHEAD.
⊙ = TARGET BOTTOM HOLE.
◆ = ENTRY POINT.
▲ = SECTION CORNERS LOCATED. (NAD 83)
△ = SECTION CORNERS RE-ESTABLISHED.
(Not Set on Ground.) (NAD 83)

PDOP = 1.2

NAD 83 (SURFACE LOCATION)	NAD 83 (ENTRY POINT)	NAD 83 (TARGET BOTTOM HOLE)
LATITUDE = 40°27'47.11" (40.463085)	LATITUDE = 40°28'14.25" (40.470625)	LATITUDE = 40°28'13.92" (40.470533)
LONGITUDE = 104°55'38.14" (104.927261)	LONGITUDE = 104°55'36.16" (104.926711)	LONGITUDE = 104°58'15.54" (104.970983)
NAD 27 (SURFACE LOCATION)	NAD 27 (ENTRY POINT)	NAD 27 (TARGET BOTTOM HOLE)
LATITUDE = 40°27'47.17" (40.463103)	LATITUDE = 40°28'14.32" (40.470644)	LATITUDE = 40°28'13.98" (40.470550)
LONGITUDE = 104°55'36.23" (104.926731)	LONGITUDE = 104°55'34.25" (104.926181)	LONGITUDE = 104°58'13.62" (104.970450)

CERTIFICATE OF RECORDING
THIS IS TO CERTIFY THAT THE ABOVE DESCRIBED SURVEY WAS MADE IN ACCORDANCE WITH THE PROVISIONS OF THE COLORADO SURVEYING ACT, AND THAT THE SAME ARE TRUE AND CORRECT TO THE BEST OF THE SURVEYOR'S KNOWLEDGE AND BELIEF.

REGISTERED LAND SURVEYOR
REGISTRATION NO. 28285
STATE OF COLORADO

REV: 4 11-13-18 A.P. (SHL MOVE)



UELS, LLC
Corporate Office * 85 South 200 East
Vernal, UT 84078 * (435) 789-1017

SURVEYED BY CHAD MEIERS, J.C.
DRAWN BY K.B.
10-14-16
02-25-16
SCALE
1" = 1000'

WELL LOCATION PLAT