



40.0964, -108.24761, 5685.5ft, 295°
03/03/2021 08:38:05 AM



40.09667, -108.24776, 5680.9ft, 314°
03/03/2021 08:39:01 AM



40.09643, -108.24766, 5670.4ft, 280°
03/03/2021 08:37:41 AM



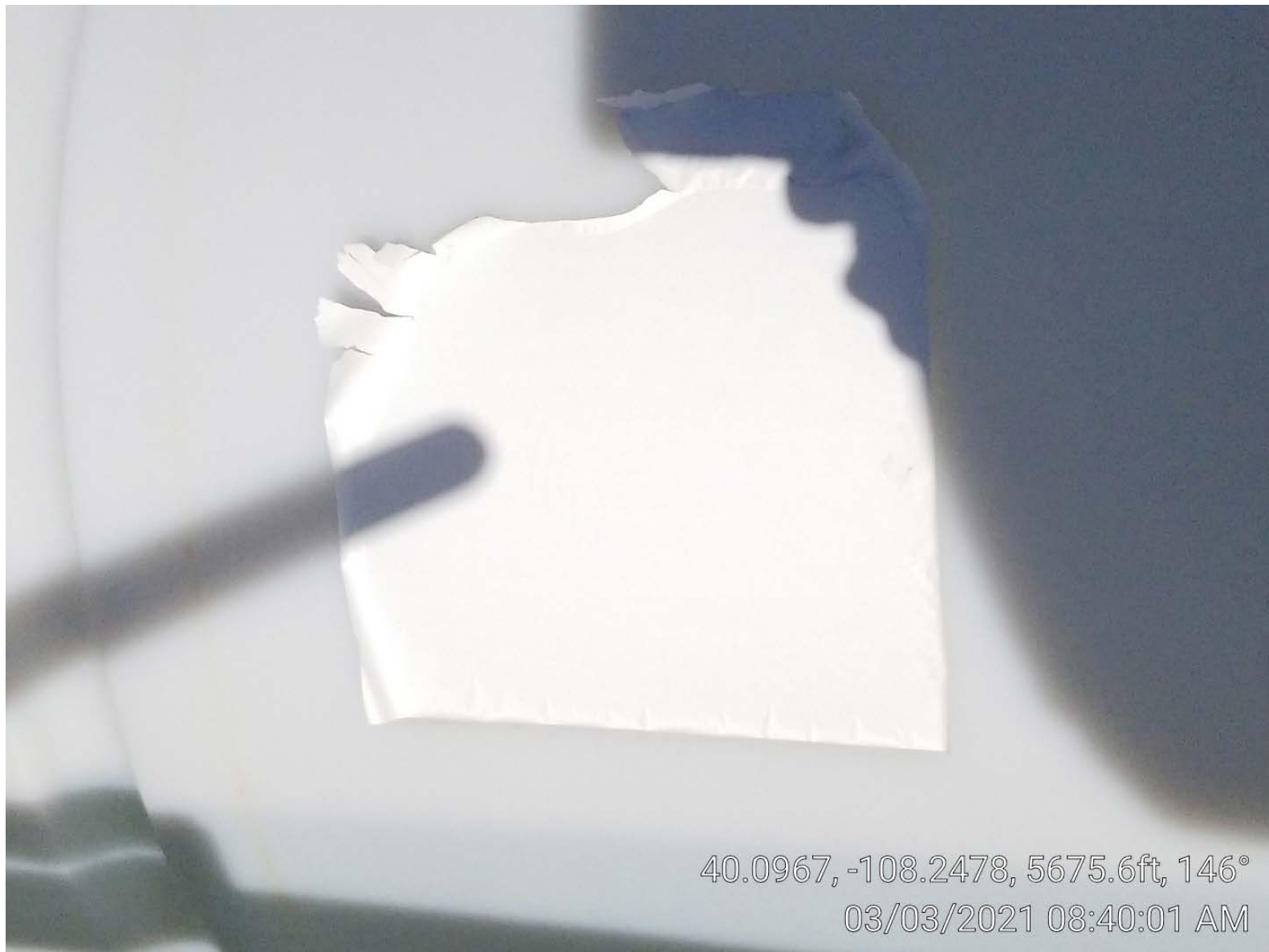
COLORADO
Oil & Gas Conservation
Commission
Department of Natural Resources

Photo 3. Meter building & tank.

Parker Unit 1-35

API: 05-103-07681

Inspection: 700405634



31 OPERATING

EMERGENCY NUMBER : 800-209-9762

Parker Unit 1-35
1980' FSL 1994' FWL
NE/4 SW/4 S35, T02N, R97W "K"
LATITUDE 40.096702 N
LONGITUDE -108.247798 W
TD 7148' ELEV. 5728' GL
LEASE #FEE API #05-103-07681
WHITE RIVER DOME
RIO BLANCO COUNTY, CO
EMERGENCY CONTACT: 877-352-4660

STATE HI-WAY 64
Lat: 40.09670 Long: 108.2478

40.09643, -108.24783, 5680.0ft, 285°

03/03/2021 08:36:54 AM